

District I
1625 N. French Dr., Hobbs, NM 88240
Phone: (575) 393-6161 Fax: (575) 393-6720
District II
811 S. First St., Artesia, NM 88210
Phone: (575) 748-1283 Fax: (575) 748-9720
District III
1000 Rio Brazos Road, Aztec, NM 87410
Phone: (505) 334-6178 Fax: (505) 334-6170
District IV
1220 S. St. Francis Dr., Santa Fe, NM 87505
Phone: (505) 476-3460 Fax: (505) 476-3462

State of New Mexico
Energy, Minerals & Natural Resources Department
OIL CONSERVATION DIVISION
1220 South St. Francis Dr.
Santa Fe, NM 87505

Form C-102
Revised August 1, 2011
Submit one copy to appropriate
District Office

MAR 13 2015 AMENDED REPORT

WELL LOCATION AND ACREAGE DEDICATION

¹ API Number 30-025-42474	² Pool Code 7320	³ Pool Name BRINNINSTOOL; BONE SPRING
⁴ Property Code	⁵ Property Name NORTH THISTLE 15-10 STATE COM	⁶ Well Number 1H
⁷ OGRID No. 6137	⁸ Operator Name DEVON ENERGY PRODUCTION COMPANY, L.P.	⁹ Elevation 3714.3

¹⁰ Surface Location

UL or lot no.	Section	Township	Range	Lot Idn	Feet from the	North/South line	Feet from the	East/West line	County
F	15	23 S	33 E		2632	NORTH	1982	WEST	LEA

¹¹ Bottom Hole Location If Different From Surface

UL or lot no.	Section	Township	Range	Lot Idn	Feet from the	North/South line	Feet from the	East/West line	County
C	10	23 S	33 E		330	NORTH	1732	WEST	LEA

¹² Dedicated Acres	¹³ Joint or Infill	¹⁴ Consolidation Code	¹⁵ Order No.
240			

No allowable will be assigned to this completion until all interests have been consolidated or a non-standard unit has been approved by the division.

<p>Survey map showing well location and acreage dedication. The map includes a grid with sections 10, 15, and 30. It shows the location of the well (NORTH THISTLE 15-10 STATE COM 1H) and the bottom hole location. The map also shows the surface location and the bottom hole location. The map includes a scale bar and a north arrow.</p>	<p>¹⁷ OPERATOR CERTIFICATION</p> <p>I hereby certify that the information contained herein is true and complete to the best of my knowledge and belief, and that this organization either owns a working interest or undivided mineral interest in the land including the proposed bottom hole location or has a right to drill this well at this location pursuant to a contract with an owner of such a mineral or working interest, or to a voluntary pooling agreement or a compulsory pooling order heretofore entered by the division.</p> <p>Signature: <i>David H. Cook</i> Date: 3/12/2015</p> <p>Printed Name: David H. Cook</p> <p>E-mail Address: david.cook@dvn.com</p> <p>¹⁸ SURVEYOR CERTIFICATION</p> <p>I hereby certify that the well location shown on this plat was plotted from field notes of actual surveys made by me or under my supervision, and that the same is true and correct to the best of my belief.</p> <p>Signature and Seal of Professional Surveyor: <i>[Signature]</i></p> <p>Certificate Number: FILIMON F. JARAMILLO, PLS 12797</p> <p>SURVEY NO. 3670</p>
--	--

MAR 16 2015

SITE MAP

FEEDING AREA

WATER TANK

210' WEST OFFSET
EL. 3716.3'

EXIST. 2-TRACK ROAD

PROPOSED 176 LF ACCESS ROAD

175' NORTH
TOPSOIL OFFSET AREA
EL. 3710.0'

EL. 3711.9'

N89°56'01"E 470.09 FT

210'

175'

NORTH THISTLE "15-10" STATE COM 1H
ELEV. = 3714.3'
3.779± ACRES

LAT. = 32.3047567°N (NAD83)
LONG. = 103.5623632°W
NMSP EAST (FT)
N = 475489.48
E = 779538.27

NORTH THISTLE "15-10" STATE COM 2H

260' EAST OFFSET
EL. 3711.6'

300'00"27"E 350.21 FT

BERM

EL. 3720.9'

S89°57'08"W 470.22 FT

175' SOUTH OFFSET
EL. 3719.8'

EL. 3715.6'

30'

NOTE:
RECLAIM ALL FOUR SIDES.

0.12 60 120 240

DIRECTIONS TO LOCATION

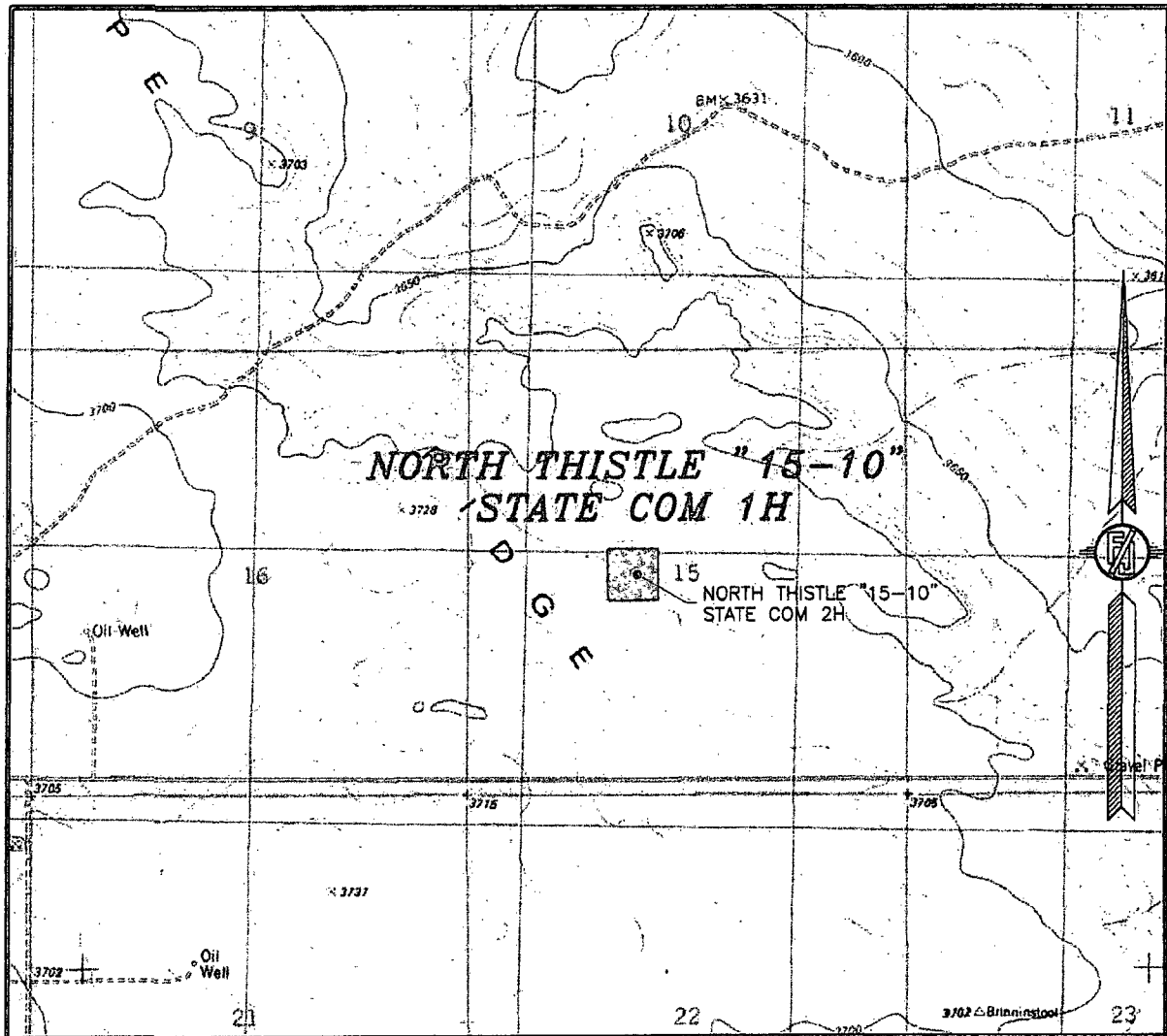
DEVON ENERGY PRODUCTION COMPANY, L.P.
NORTH THISTLE "15-10" STATE COM 1H
AD. LOCATED 2632 FT. FROM THE NORTH LINE
AND 1982 FT. FROM THE WEST LINE OF
SECTION 15, TOWNSHIP 23 SOUTH,
RANGE 33 EAST, N.M.P.M.
LEA COUNTY, STATE OF NEW MEXICO

SURVEY NO. 3670

MADRON SURVEYING, INC. 301 SOUTH CANAL
(575) 234-3341

CARLSBAD, NEW MEXICO

SECTION 15, TOWNSHIP 23 SOUTH, RANGE 33 EAST, N.M.P.M.
LEA COUNTY, STATE OF NEW MEXICO
LOCATION VERIFICATION MAP



USGS QUAD MAP:
TIP TOP WELLS

NOT TO SCALE

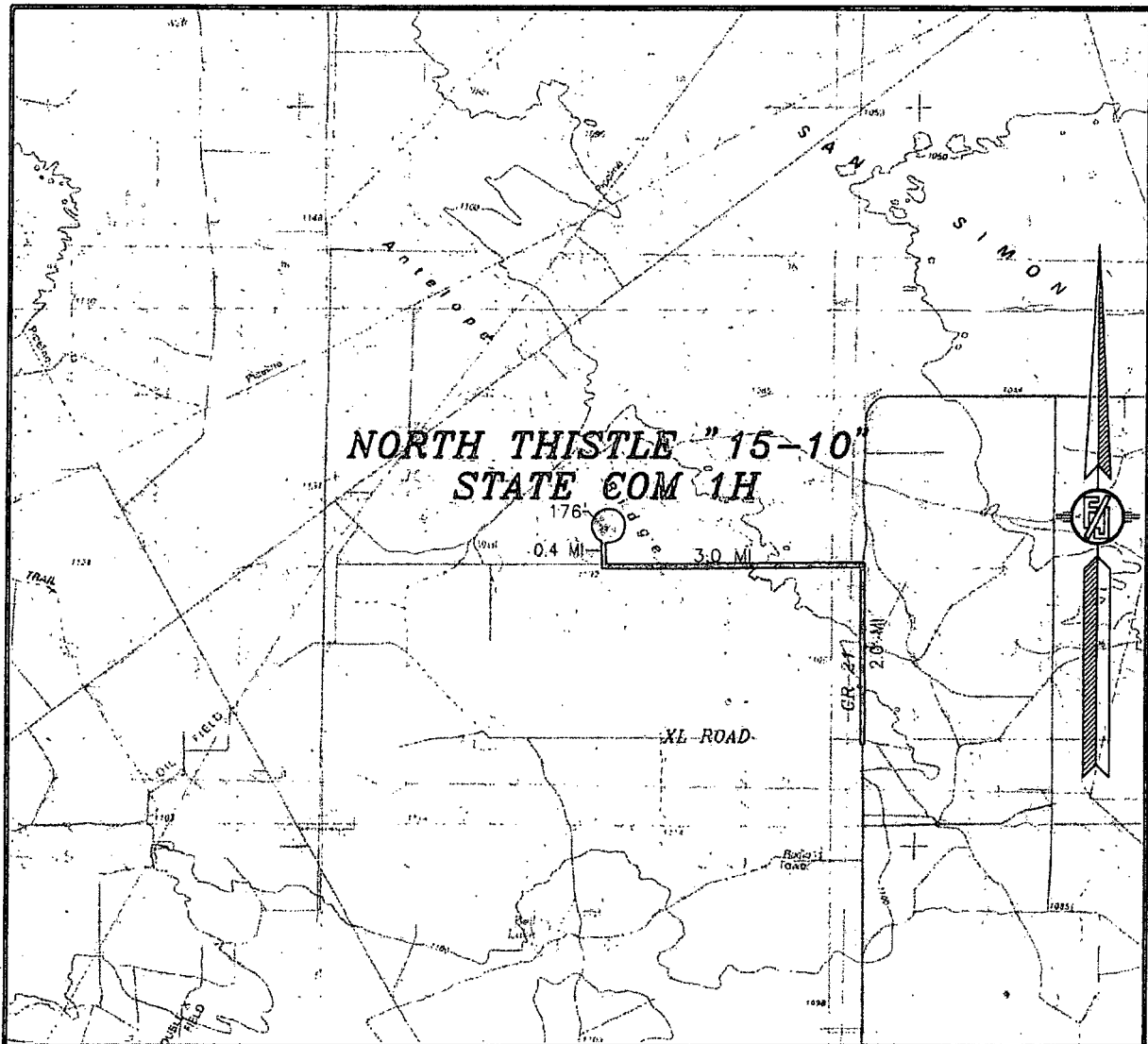
DEVON ENERGY PRODUCTION COMPANY, L.P.
NORTH THISTLE "15-10" STATE COM 1H
LOCATED 2632 FT. FROM THE NORTH LINE
AND 1982 FT. FROM THE WEST LINE OF
SECTION 15, TOWNSHIP 23 SOUTH,
RANGE 33 EAST, N.M.P.M.
LEA COUNTY, STATE OF NEW MEXICO

FEBRUARY 24, 2015

SURVEY NO. 3670

MADRON SURVEYING, INC. 301 SOUTH CANAL (575) 234-3341 CARLSBAD, NEW MEXICO

SECTION 15, TOWNSHIP 23 SOUTH, RANGE 33 EAST, N.M.P.M.
LEA COUNTY, STATE OF NEW MEXICO
VICINITY MAP



DISTANCES IN MILES

NOT TO SCALE

DEVON ENERGY PRODUCTION COMPANY, L.P.

NORTH THISTLE "15-10" STATE COM 1H

LOCATED 2632 FT. FROM THE NORTH LINE

AND 1982 FT. FROM THE WEST LINE OF

SECTION 15, TOWNSHIP 23 SOUTH,

RANGE 33 EAST, N.M.P.M.

LEA COUNTY, STATE OF NEW MEXICO

DIRECTIONS TO LOCATION

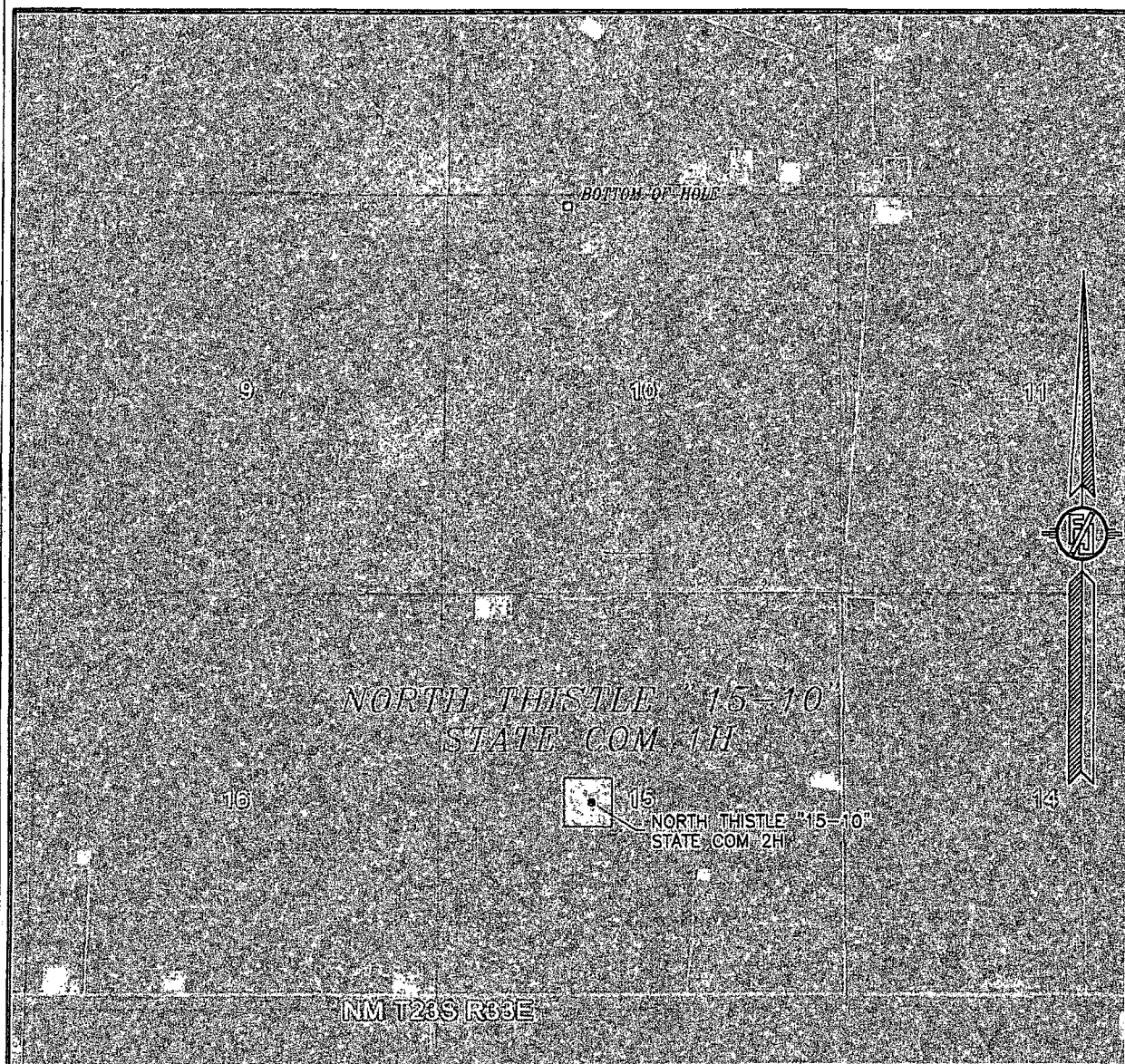
FROM THE INTERSECTION OF CR 21 (DELAWARE BASIN) AND XL ROAD,
GO NORTH ON CR 21 FOR APPROX. 2.0 MILES. GO WEST ON 20'
CALICHE LEASE ROAD FOR APPROX. 3.0 MILES. GO NORTH ON
2-TRACK ROAD FOR APPROX. 0.4 OF A MILE TO BEGIN ROAD
SURVEY. GO NORTHEAST APPROX. 176' TO THE SOUTHWEST PAD
CORNER FOR THIS LOCATION.

FEBRUARY 24, 2015

SURVEY NO. 3670

MADRON SURVEYING, INC. 301 SOUTH CANAL (575) 234-3341 CARLSBAD, NEW MEXICO

SECTION 15, TOWNSHIP 23 SOUTH, RANGE 33 EAST, N.M.P.M.
LEA COUNTY, STATE OF NEW MEXICO
AERIAL PHOTO



NOT TO SCALE
AERIAL PHOTO:
GOOGLE EARTH
FEBRUARY 2014

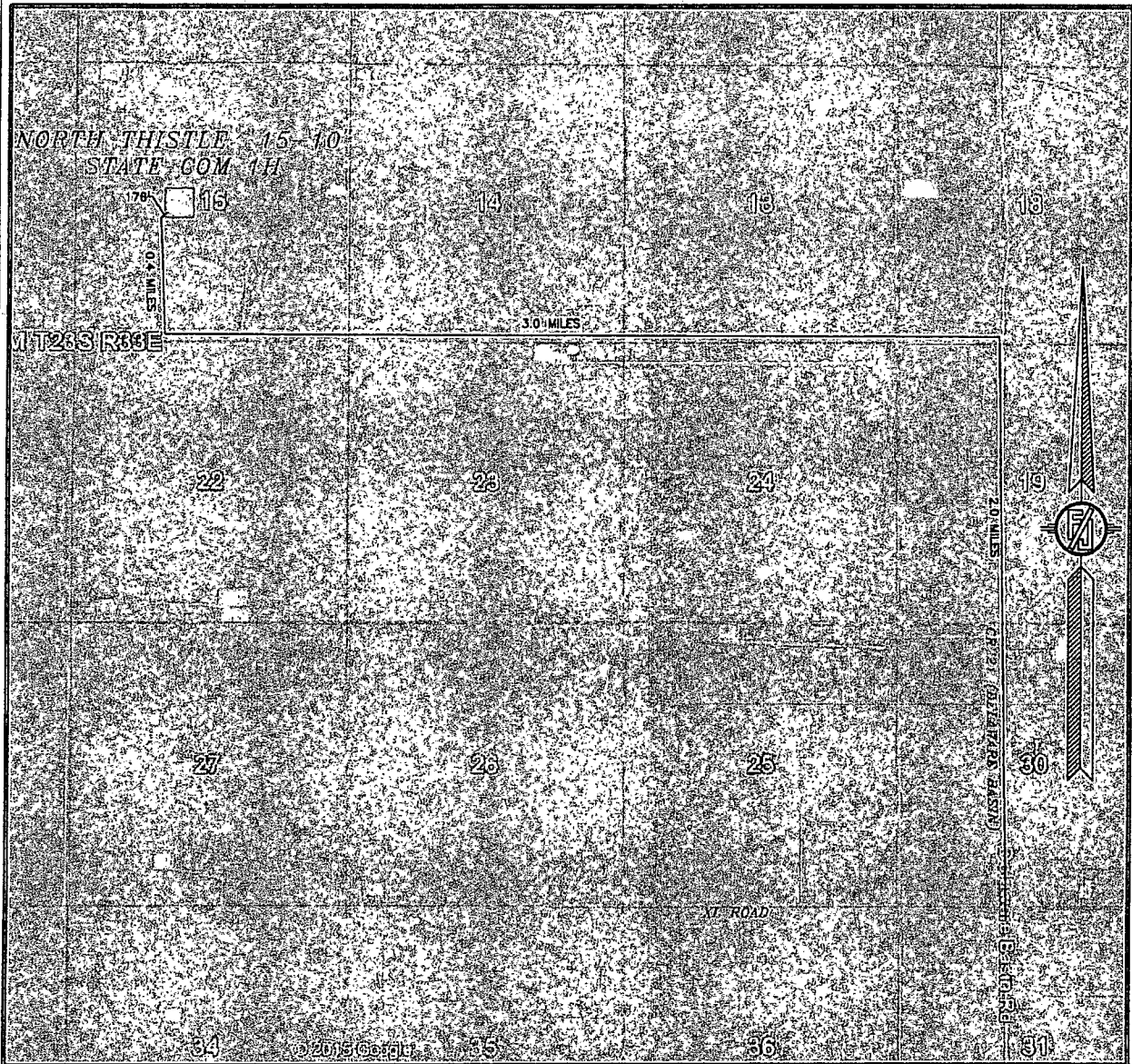
DEVON ENERGY PRODUCTION COMPANY, L.P.
NORTH THISTLE "15-10" STATE COM 1H
LOCATED 2632 FT. FROM THE NORTH LINE
AND 1982 FT. FROM THE WEST LINE OF
SECTION 15, TOWNSHIP 23 SOUTH,
RANGE 33 EAST, N.M.P.M.
LEA COUNTY, STATE OF NEW MEXICO

FEBRUARY 24, 2015

SURVEY NO. 3670

MADRON SURVEYING, INC. 301 SOUTH CANAL CARLSBAD, NEW MEXICO
(575) 234-3341

SECTION 15, TOWNSHIP 23 SOUTH, RANGE 33 EAST, N.M.P.M.
LEA COUNTY, STATE OF NEW MEXICO
ACCESS AERIAL ROUTE MAP



NOT TO SCALE
AERIAL PHOTO:
GOOGLE EARTH
FEBRUARY 2014

DEVON ENERGY PRODUCTION COMPANY, L.P.
NORTH THISTLE "15-10" STATE COM 1H
LOCATED 2632 FT. FROM THE NORTH LINE
AND 1982 FT. FROM THE WEST LINE OF
SECTION 15, TOWNSHIP 23 SOUTH,
RANGE 33 EAST, N.M.P.M.
LEA COUNTY, STATE OF NEW MEXICO

FEBRUARY 24, 2015

SURVEY NO. 3670

MADRON SURVEYING, INC. 301 SOUTH CANAL (575) 234-3341 CARLSBAD, NEW MEXICO