

DISTRICT I  
1625 N. French Dr., Hobbs, NM 88240  
Phone: (575) 393-6161 Fax: (575) 393-0720

DISTRICT II  
811 S. First St., Artesia, NM 88210  
Phone: (575) 748-1283 Fax: (575) 748-9720

DISTRICT III  
1000 Rio Brazos Road, Aztec, NM 87410  
Phone: (505) 334-6178 Fax: (505) 334-6170

DISTRICT IV  
1220 S. St. Francis Dr., Santa Fe, NM 87505  
Phone: (505) 476-3460 Fax: (505) 476-3462

State of New Mexico  
Energy, Minerals & Natural Resources Department  
OIL CONSERVATION DIVISION  
1220 South St. Francis Dr.  
Santa Fe, New Mexico 87505

Form C-102  
Revised August 1, 2011  
Submit one copy to appropriate  
District Office

MAY 12 2015

AMENDED REPORT

WELL LOCATION AND ACREAGE DEDICATION PLAT

|                                   |  |                                |
|-----------------------------------|--|--------------------------------|
| API Number<br><b>30-025-42554</b> | Pool Code<br><b>62700</b>                  | Pool Name<br><b>Wantz; ABO</b> |
| Property Code<br><b>24427</b>     | Property Name<br><b>HAWK FEDERAL B 1</b>   | Well Number<br><b>73</b>       |
| OGRID No.<br><b>873</b>           | Operator Name<br><b>APACHE CORPORATION</b> | Elevation<br><b>3505'</b>      |

Surface Location

|                           |                     |                         |                      |         |                             |                                  |                              |                               |                      |
|---------------------------|---------------------|-------------------------|----------------------|---------|-----------------------------|----------------------------------|------------------------------|-------------------------------|----------------------|
| UL or lot No.<br><b>N</b> | Section<br><b>8</b> | Township<br><b>21-S</b> | Range<br><b>37-E</b> | Lot Idn | Feet from the<br><b>990</b> | North/South line<br><b>SOUTH</b> | Feet from the<br><b>2120</b> | East/West line<br><b>WEST</b> | County<br><b>LEA</b> |
|---------------------------|---------------------|-------------------------|----------------------|---------|-----------------------------|----------------------------------|------------------------------|-------------------------------|----------------------|

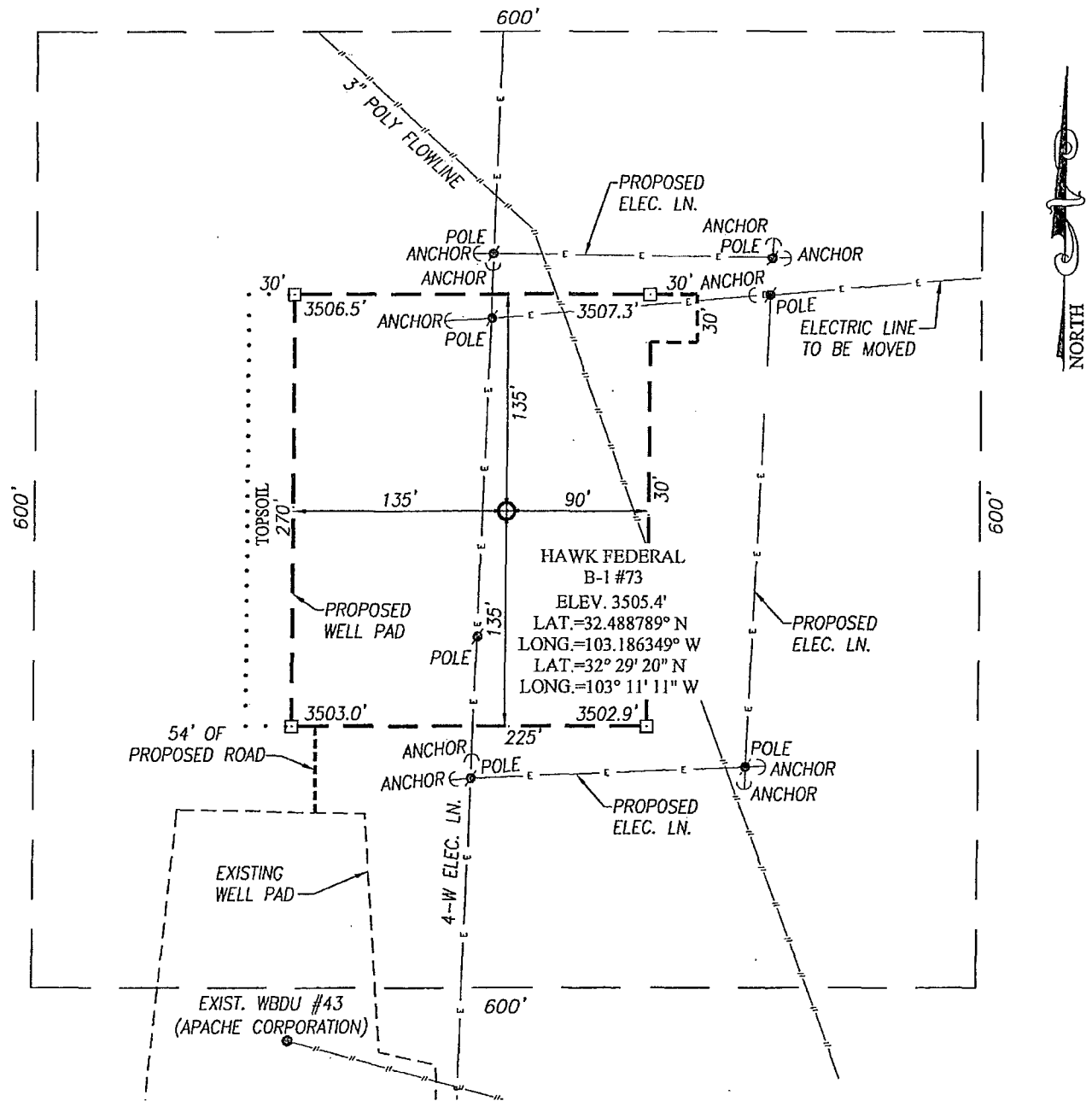
Bottom Hole Location If Different From Surface

|                              |                 |                    |           |         |               |                  |               |                |        |
|------------------------------|-----------------|--------------------|-----------|---------|---------------|------------------|---------------|----------------|--------|
| UL or lot No.                | Section         | Township           | Range     | Lot Idn | Feet from the | North/South line | Feet from the | East/West line | County |
| Dedicated Acres<br><b>40</b> | Joint or Infill | Consolidation Code | Order No. |         |               |                  |               |                |        |

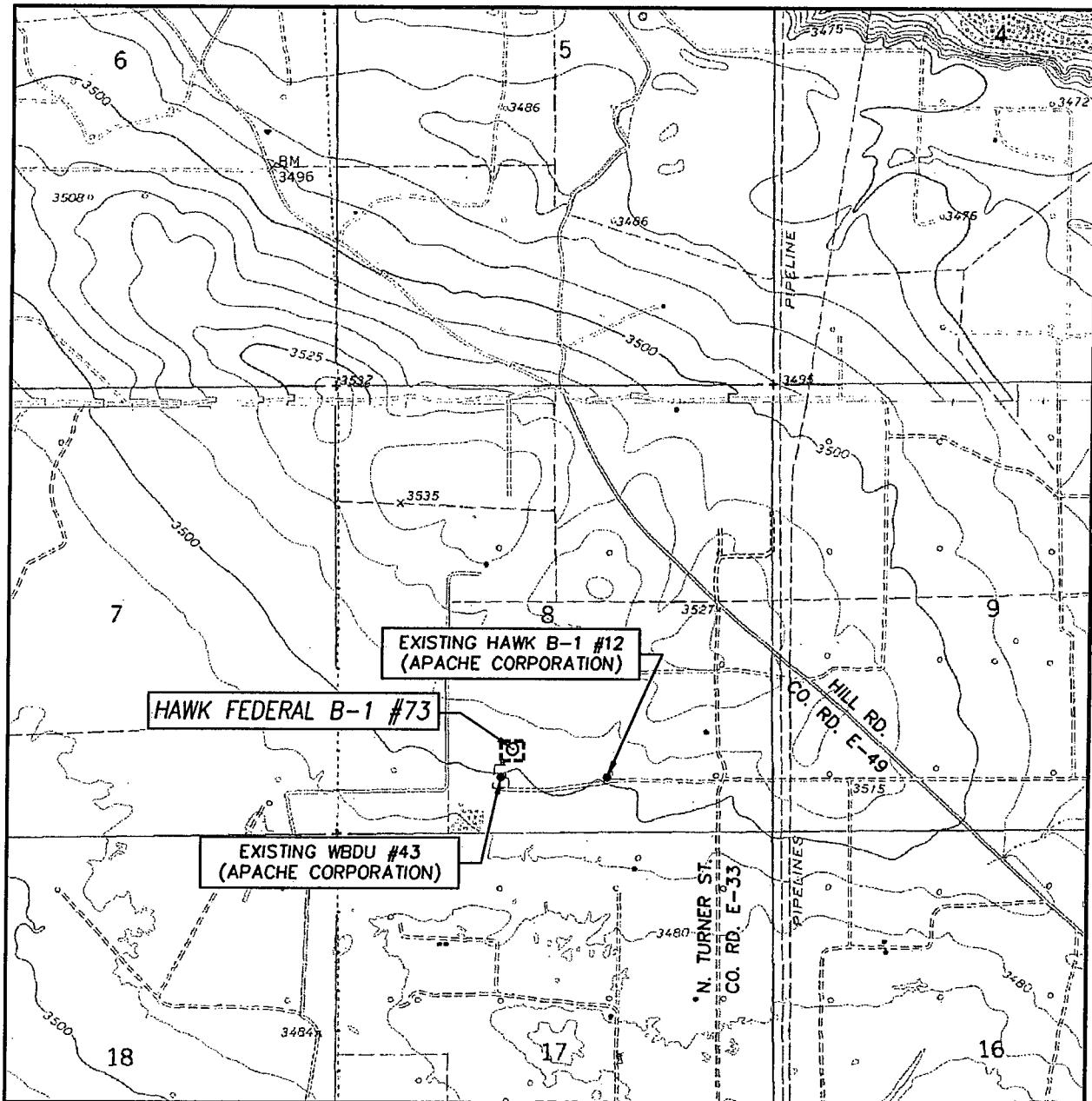
NO ALLOWABLE WILL BE ASSIGNED TO THIS COMPLETION UNTIL ALL INTERESTS HAVE BEEN CONSOLIDATED OR A NON-STANDARD UNIT HAS BEEN APPROVED BY THE DIVISION

|  |   |  |
|--|---|--|
|  | <p>GEODETIC COORDINATES<br/>NAD 27 NME</p> <p>SURFACE LOCATION<br/>Y= 543436.2 N<br/>X= 853669.9 E</p> <p>LAT.=32.488789° N<br/>LONG.=103.186349° W</p> <p>LAT.=32° 29' 20" N<br/>LONG.=103° 11' 11" W</p>  | <p><b>OPERATOR CERTIFICATION</b></p> <p>I hereby certify that the information herein is true and complete to the best of my knowledge and belief, and that this organization either owns a working interest or unleased mineral interest in the land including the proposed bottom hole location or has a right to drill this well at this location pursuant to a contract with an owner of such mineral or working interest, or to a voluntary pooling agreement or a compulsory pooling order heretofore entered by the division.</p> <p><i>Sorina Flores</i> 4/3/14<br/>Signature Date</p> <p><b>Sorinah. Flores</b><br/>Printed Name</p> <p><i>Sorina.Flores@apachecorp.com</i><br/>E-mail Address</p> |
|  | <p><b>SURVEYOR CERTIFICATION</b></p> <p>I hereby certify that the well location shown on this plat was plotted from field notes of actual surveys made by me or under my supervision, and that the same is true and correct to the best of my belief.</p> <p>APRIL 16, 2013</p> <p>Date of Survey</p> <p>Signature &amp; Seal of Professional Surveyor:</p> | <p><b>RONALD J. EIDSON</b><br/>NEW MEXICO<br/>3239</p> <p><i>Ronald J. Eidson</i> 05/07/2013</p> <p>Certificate Number Gary G. Eidson 12641<br/>Professional Ronald J. Eidson 3239</p> <p>DSS JWSC W.O.: 13.11.0383</p>  |

MAY 12 2015



# LOCATION VERIFICATION MAP



SCALE: 1" = 2000'

CONTOUR INTERVAL:  
EUNICE, N.M. - 10'  
HOBBS SW, N.M. - 5'

SEC. 8 TWP. 21-S RGE. 37-E

SURVEY N.M.P.M.

COUNTY LEA STATE NEW MEXICO

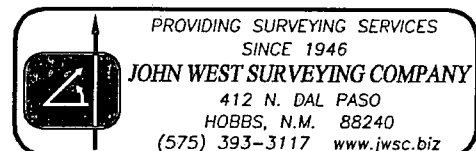
DESCRIPTION 990' FSL & 2120' FWL

ELEVATION 3505'

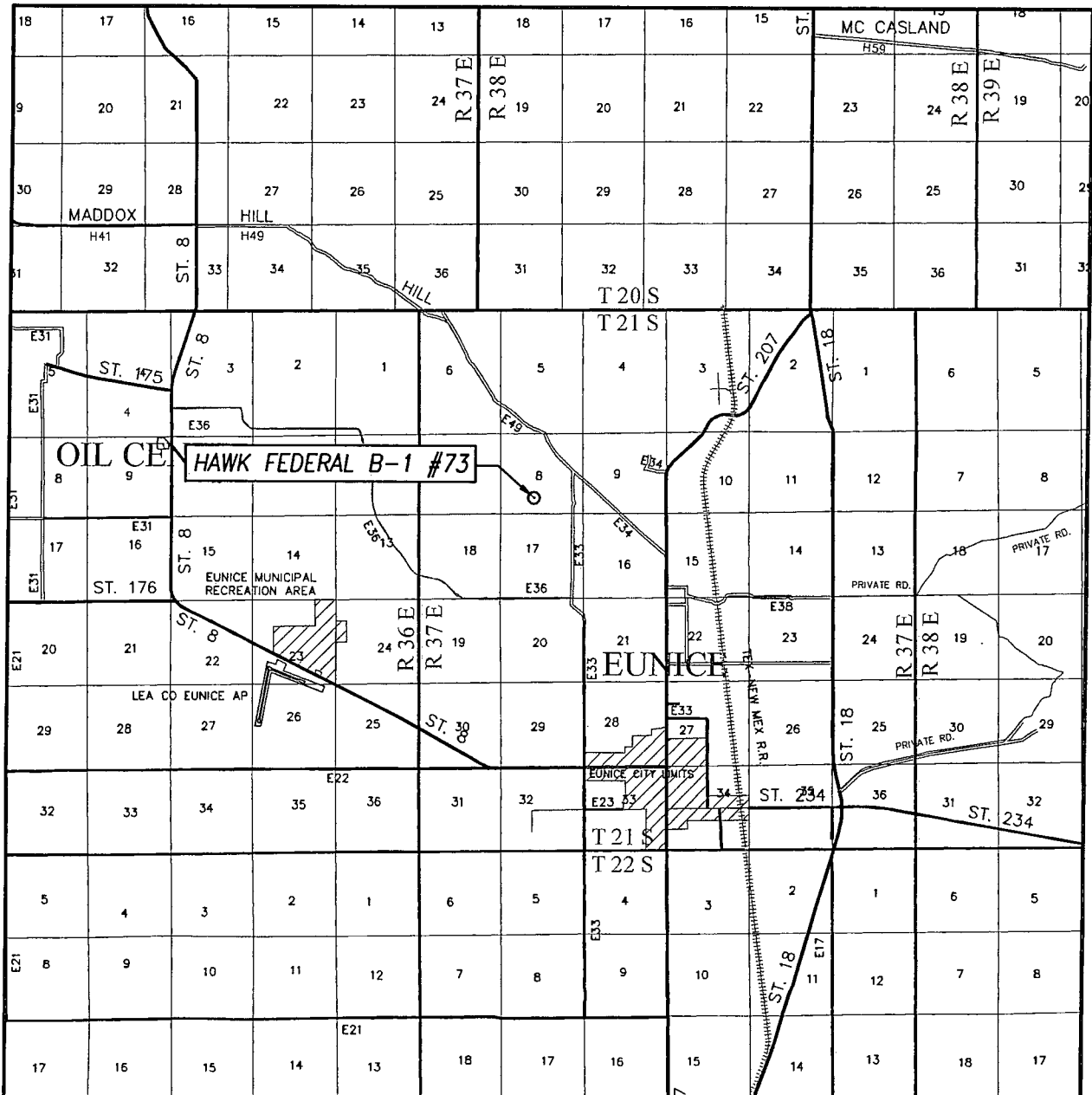
OPERATOR APACHE CORPORATION

LEASE HAWK FEDERAL B-1

U.S.G.S. TOPOGRAPHIC MAP  
EUNICE, N.M.



# VICINITY MAP



SCALE: 1" = 2 MILES

SEC. 8 TWP. 21-S RGE. 37-E

SURVEY N.M.P.M.

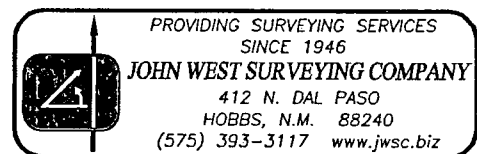
COUNTY LEA STATE NEW MEXICO

DESCRIPTION 990' FSL & 2120' FWL

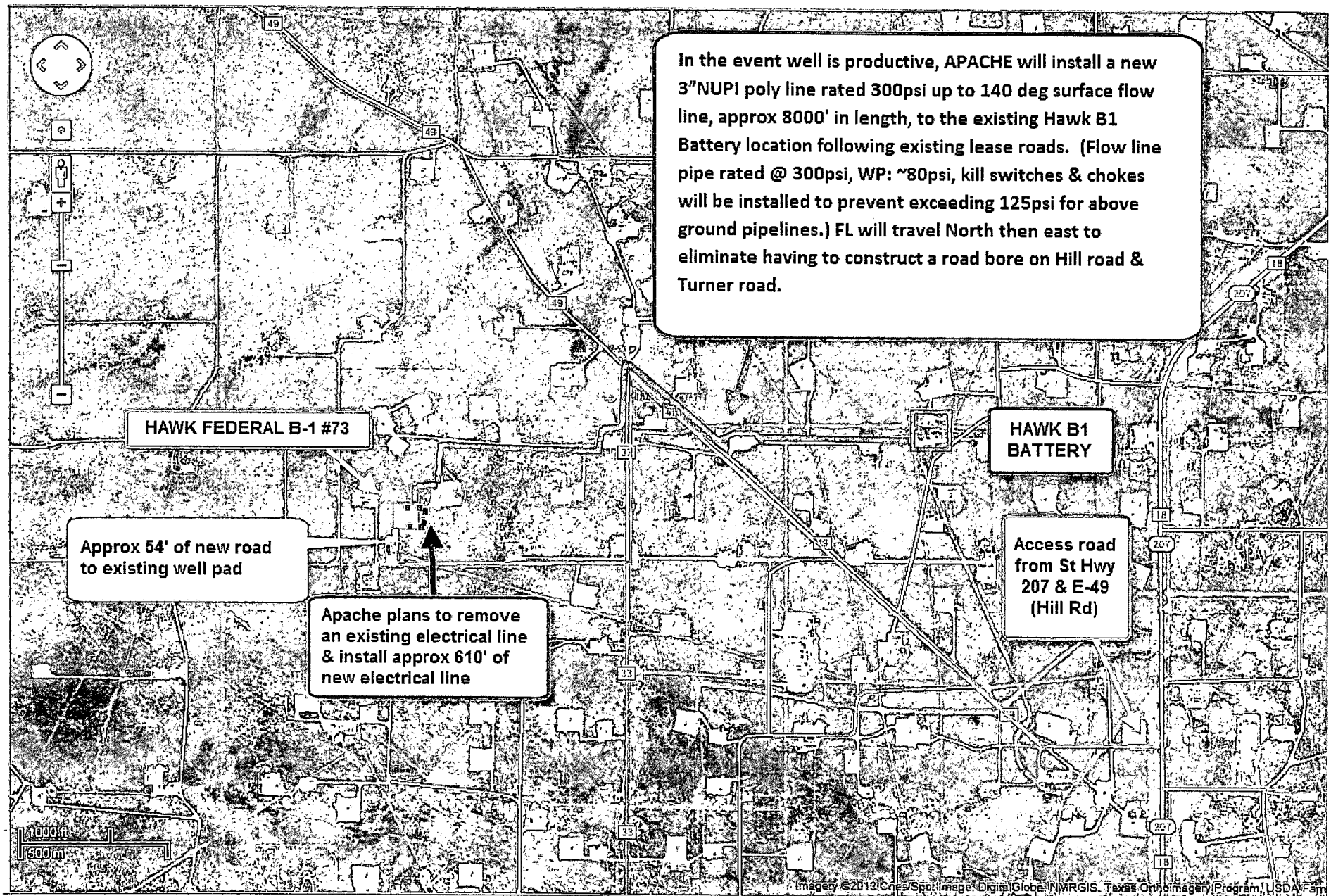
ELEVATION 3505'

OPERATOR APACHE CORPORATION

LEASE HAWK FEDERAL B-1



ACCESS ROAD & FLOW LINE PLAT  
HAWK FEDERAL B-1 #73  
EXHIBIT #1



# Exhibit #2

## APACHE CORPORATION

HAWK FEDERAL B 1 #73

990' FSL & 2120' FWL

SEC: 8 T21S R37E

1 MILE RADIUS



### POSTED WELL DATA

Well Name  
Well Number



### WELL SYMBOLS

- PERMIT DI
- Abandoned Oil and Gas Well
- LTD LOCATION
- Dry Hole, With Show of Gas
- Dry Hole, With Show of Oil & Gas
- Dry Hole
- Gas Well
- Junked
- Key Injection well
- Location Only
- Non Apache
- Large Square
- Oil & Gas Well
- Oil Well
- Drilling
- Plugged and Abandoned
- Active Producer
- Active Injection
- P&A'd Gas Well
- New Location
- Plugged Oil Well
- Plugged Gas Well
- Injection Well

April 8, 2014

