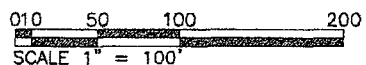
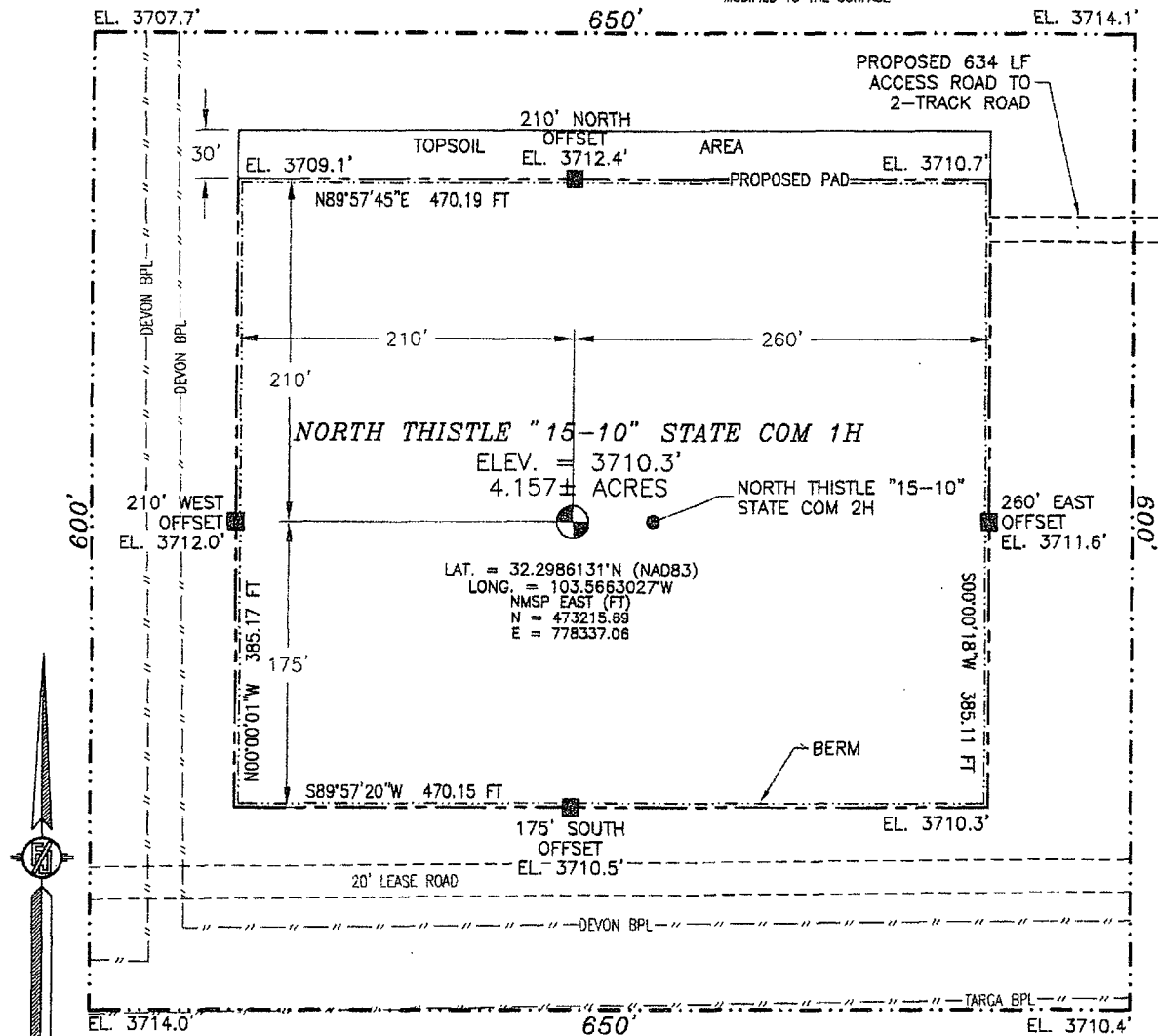


30-025-42474

SECTION 15, TOWNSHIP 23 SOUTH, RANGE 33 EAST, N.M.P.M.
LEA COUNTY, STATE OF NEW MEXICO

SITE MAP

NOTE: LATITUDE AND LONGITUDE COORDINATES ARE SHOWN USING THE NORTH AMERICAN DATUM OF 1983 (NAD83), LISTED NEW MEXICO STATE PLANE EAST COORDINATES ARE GRID (NAD83), BASIS OF BEARING AND DISTANCES USED ARE NEW MEXICO STATE PLANE EAST COORDINATES MODIFIED TO THE SURFACE



DIRECTIONS TO LOCATION
FROM THE INTERSECTION OF STATE HIGHWAY 128 AND CR 21 (DELAWARE BASIN ROAD) GO NORTH ON CR 21 APPROX. 6.1 MILES TO A LEASE ROAD ON LEFT (WEST). TURN WEST GO APPROX. 3.1 MILES TO A LEASE ROAD ON RIGHT (NORTH). TURN NORTH GO 0.1 MILE TO ROAD LATH ON LEFT (WEST) FOLLOW ROAD LATHS WEST APPROX. 634' TO THE NORTHEAST PAD CORNER FOR THIS LOCATION.

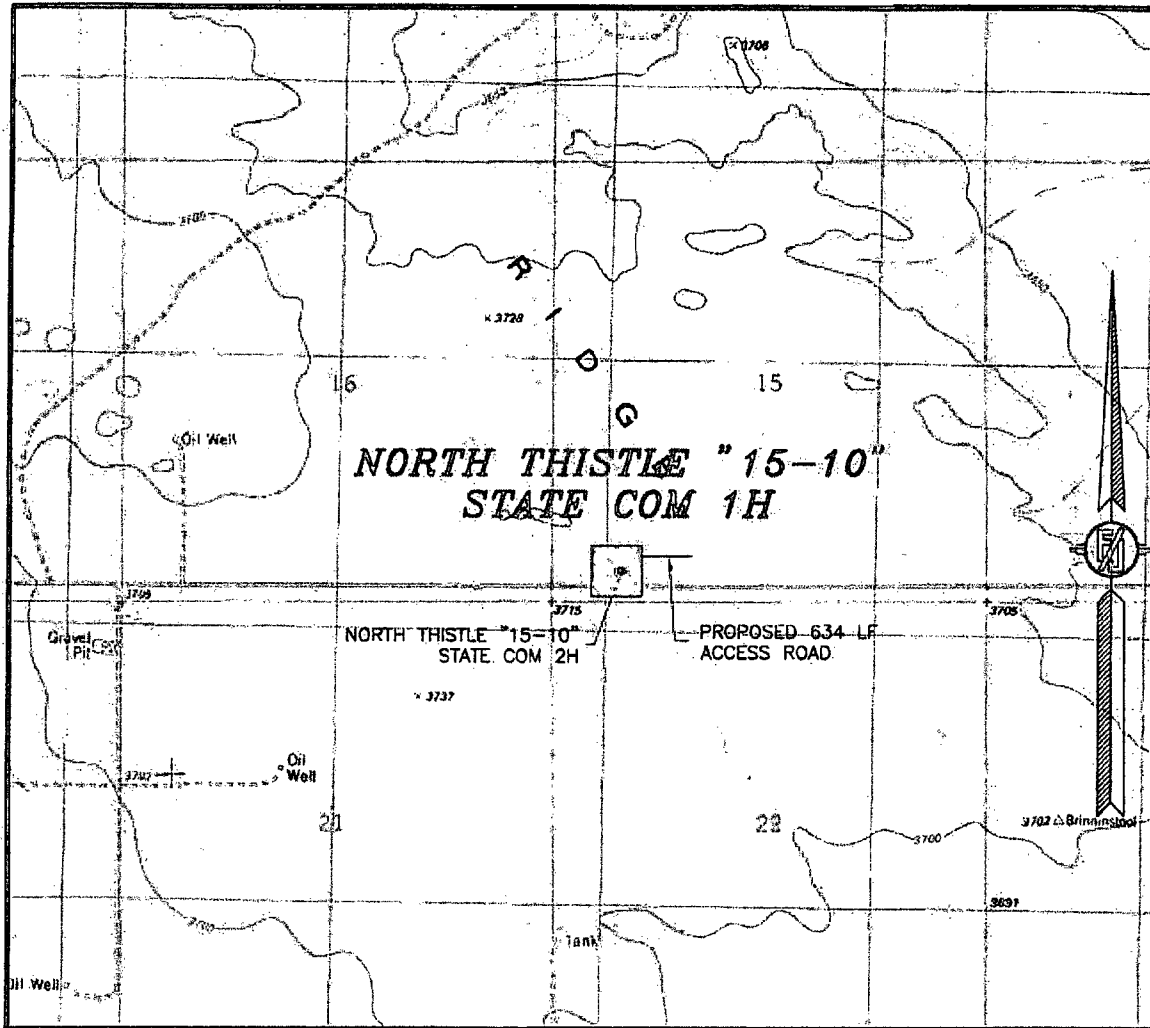
DEVON ENERGY PRODUCTION COMPANY, L.P.
NORTH THISTLE "15-10" STATE COM 1H
LOCATED 415 FT. FROM THE SOUTH LINE
AND 760 FT. FROM THE WEST LINE OF
SECTION 15, TOWNSHIP 23 SOUTH,
RANGE 33 EAST, N.M.P.M.
LEA COUNTY, STATE OF NEW MEXICO

MAY 21, 2015

SURVEY NO. 3670B

MADRON SURVEYING, INC. 301 SOUTH CANAL (575) 234-3341 CARLSBAD, NEW MEXICO

15, TOWNSHIP 23 SOUTH, RANGE 33 EAST, N.M.P.M.
LEA COUNTY, STATE OF NEW MEXICO
LOCATION VERIFICATION MAP



**USGS QUAD MAP:
TIP TOP WELLS**

NOT TO SCALE

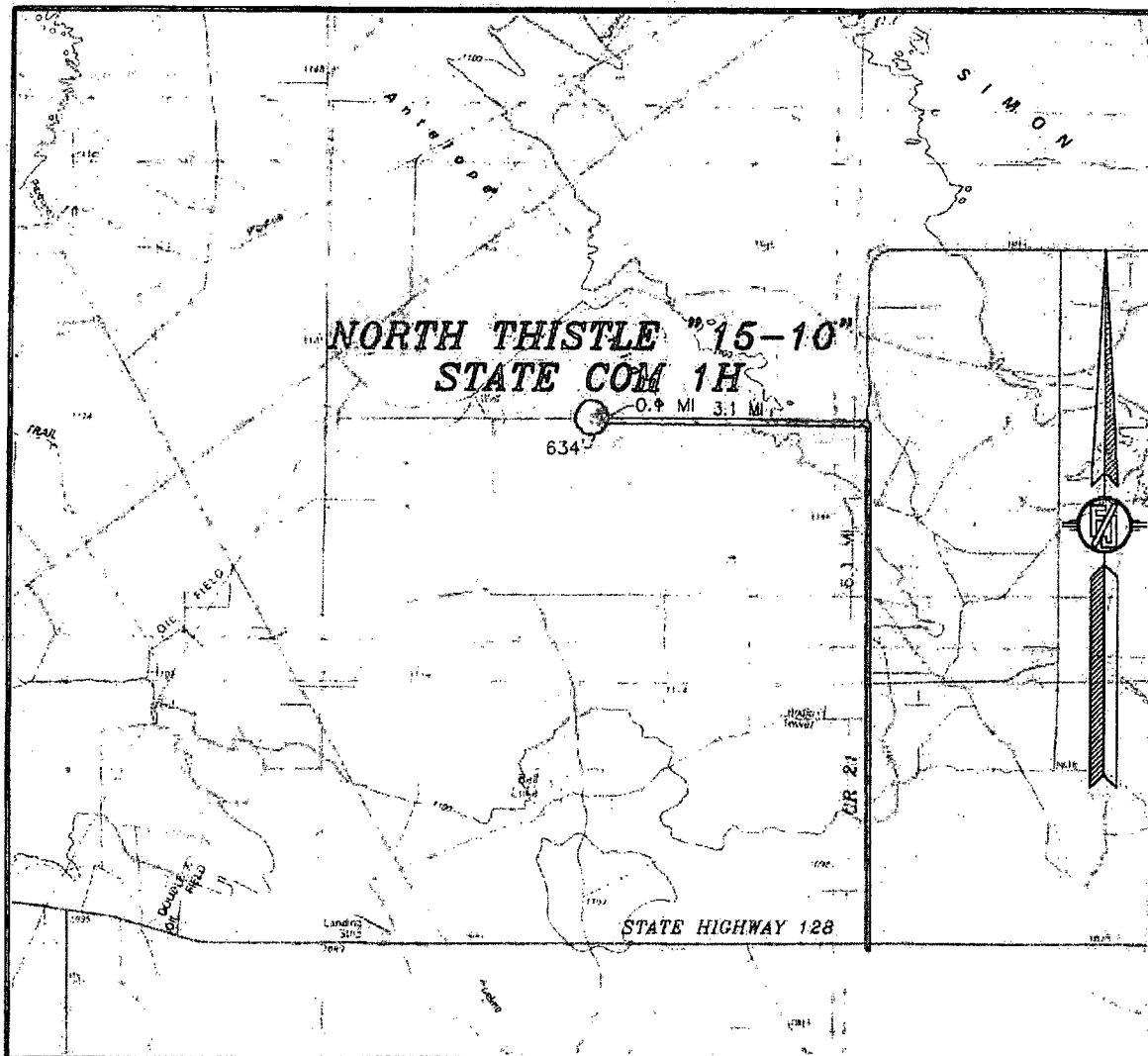
DEVON ENERGY PRODUCTION COMPANY, L.P.
NORTH THISTLE "15-10" STATE COM 1H
LOCATED 415 FT. FROM THE SOUTH LINE
AND 760 FT. FROM THE WEST LINE OF
SECTION 15, TOWNSHIP 23 SOUTH,
RANGE 33 EAST, N.M.P.M.
LEA COUNTY, STATE OF NEW MEXICO

MAY 21, 2015

SURVEY NO. 3670B

MADRON SURVEYING, INC. 301 SOUTH CANAL (575) 234-3341 CARLSBAD, NEW MEXICO

SECTION 15, TOWNSHIP 23 SOUTH, RANGE 33 EAST, N.M.P.M.
LEA COUNTY, STATE OF NEW MEXICO
VICINITY MAP



DISTANCES IN MILES

NOT TO SCALE

DEVON ENERGY PRODUCTION COMPANY, L.P.
NORTH THISTLE "15-10" STATE COM 1H
LOCATED 415 FT. FROM THE SOUTH LINE
AND 760 FT. FROM THE WEST LINE OF
SECTION 15, TOWNSHIP 23 SOUTH,
RANGE 33 EAST, N.M.P.M.
LEA COUNTY, STATE OF NEW MEXICO

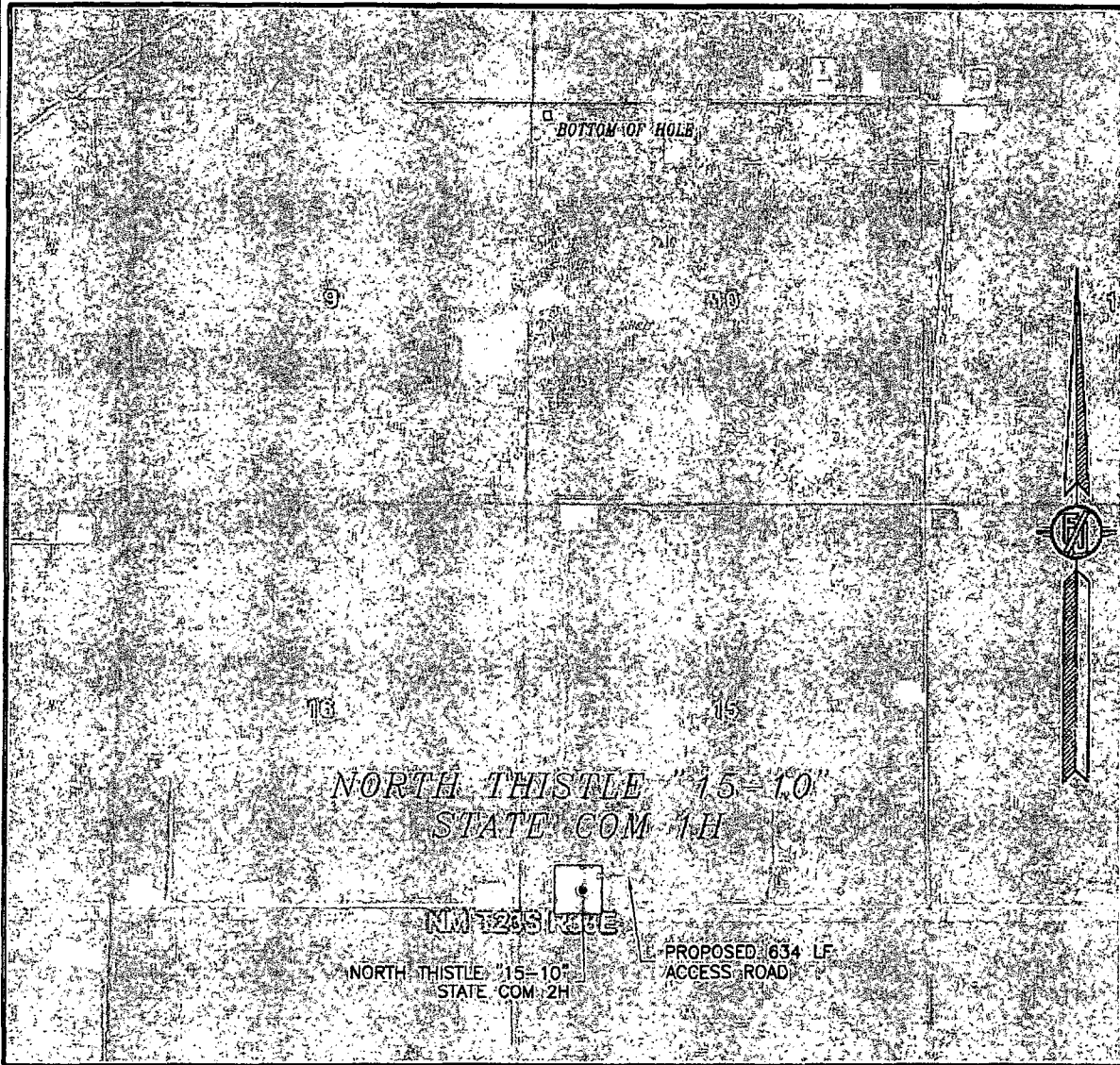
DIRECTIONS TO LOCATION
FROM THE INTERSECTION OF STATE HIGHWAY 128 AND CR 21
(DELAWARE BASIN ROAD) GO NORTH ON CR 21 APPROX. 6.1 MILES
TO A LEASE ROAD ON LEFT (WEST), TURN WEST GO APPROX. 3.1
MILES TO A LEASE ROAD ON RIGHT (NORTH), TURN NORTH GO 0.1
MILE TO ROAD LATH ON LEFT (WEST) FOLLOW ROAD LATHS WEST
APPROX. 634' TO THE NORTHEAST PAD CORNER FOR THIS LOCATION.

MAY 21, 2015

SURVEY NO. 3670B

MADRON SURVEYING, INC. 301 SOUTH CANAL (575) 234-3341 CARLSBAD, NEW MEXICO

SECTION 15, TOWNSHIP 23 SOUTH, RANGE 33 EAST, N.M.P.M.
LEA COUNTY, STATE OF NEW MEXICO
AERIAL PHOTO



NOT TO SCALE
AERIAL PHOTO:
GOOGLE EARTH
FEBRUARY 2014

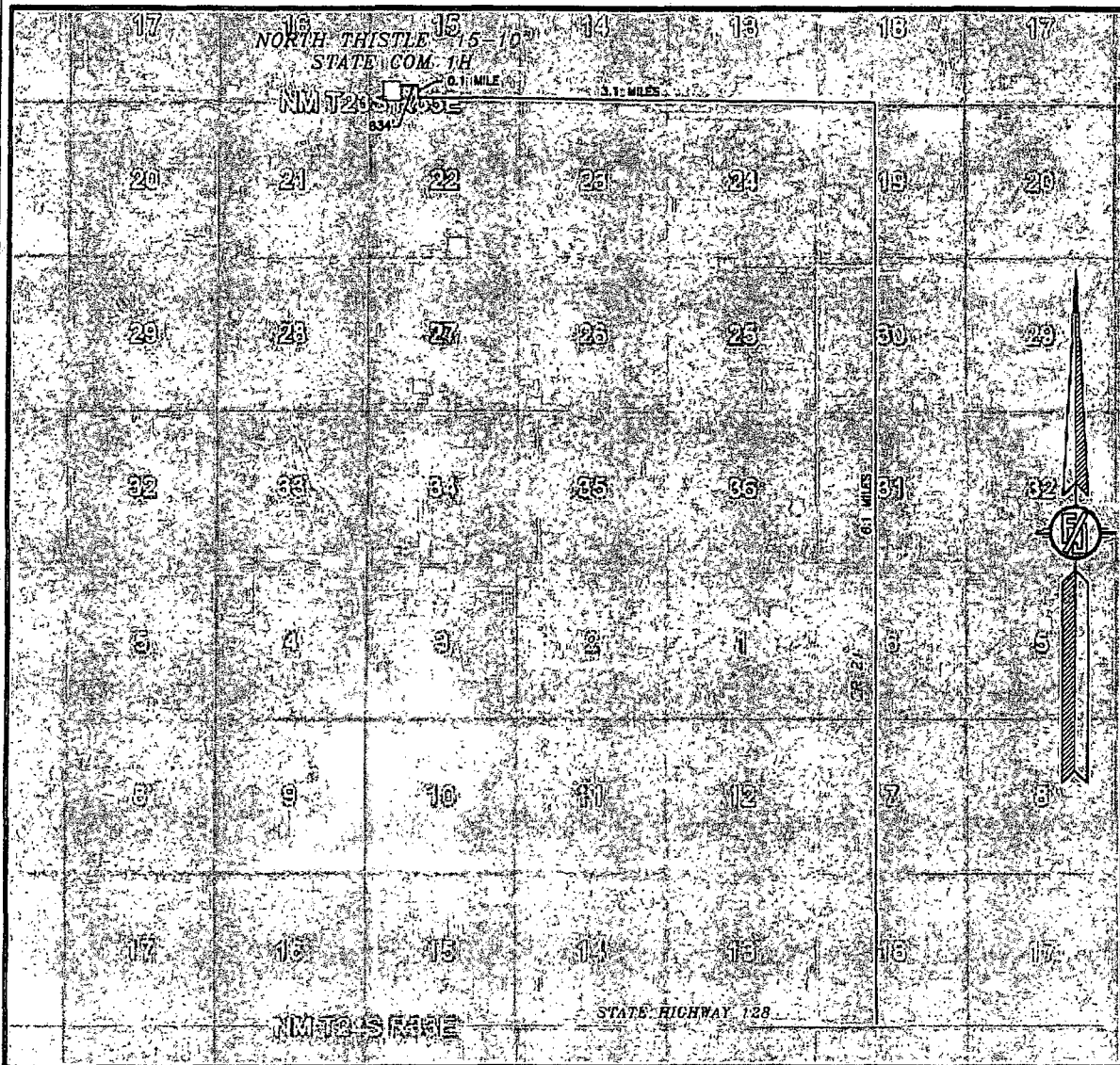
DEVON ENERGY PRODUCTION COMPANY, L.P.
NORTH THISTLE "15-10" STATE COM 1H
LOCATED 415 FT. FROM THE SOUTH LINE
AND 760 FT. FROM THE WEST LINE OF
SECTION 15, TOWNSHIP 23 SOUTH,
RANGE 33 EAST, N.M.P.M.
LEA COUNTY, STATE OF NEW MEXICO

MAY 21, 2015

SURVEY NO. 3670B

MADRON SURVEYING, INC. 301 SOUTH CANAL (575) 234-3341 CARLSBAD, NEW MEXICO

SECTION 15, TOWNSHIP 23 SOUTH, RANGE 33 EAST, N.M.P.M.
LEA COUNTY, STATE OF NEW MEXICO
ACCESS AERIAL ROUTE MAP



NOT TO SCALE
AERIAL PHOTO:
GOOGLE EARTH
FEBRUARY 2014

DEVON ENERGY PRODUCTION COMPANY, L.P.
NORTH THISTLE "15-10" STATE COM 1H
LOCATED 415 FT. FROM THE SOUTH LINE
AND 760 FT. FROM THE WEST LINE OF
SECTION 15, TOWNSHIP 23 SOUTH,
RANGE 33 EAST, N.M.P.M.
LEA COUNTY, STATE OF NEW MEXICO

MAY 21, 2015

SURVEY NO. 3670B

MADRON SURVEYING, INC. 301 SOUTH CANAL (575) 234-3341 CARLSBAD, NEW MEXICO