

DISTRICT I
1625 N. French Dr., Hobbs, NM 88240
Phone (575) 393-6161 Fax: (575) 393-0720

DISTRICT II
811 S. First St., Artesia, NM 88210
Phone (575) 746-1283 Fax: (575) 746-9720

DISTRICT III
1000 Rio Brazos Rd., Aztec, NM 87410
Phone (505) 334-6176 Fax: (505) 334-6170

DISTRICT IV
1226 S. St. Francis Dr., Santa Fe, NM 87505
Phone (505) 476-3460 Fax: (505) 476-3462

State of New Mexico
Energy, Minerals and Natural Resources Department

JUL 10 2015

Form C-102
Revised August 1, 2011

Submit one copy to appropriate
District Office

OIL CONSERVATION DIVISION RECEIVED
1226 South St. Francis Dr.
Santa Fe, New Mexico 87505

WELL LOCATION AND ACREAGE DEDICATION PLAT

AMENDED REPORT

| | | |
|--------------------------------|--|--|
| API Number 70-025- | Pool Code 97597 | Pool Name JABALINA; DELAWARE; SW |
| Property Code 715022 | Property Name BILLIKEN 6 FEDERAL | Well Number 2H |
| OGRID No. 6137 | Operator Name DEVON ENERGY PRODUCTION LP | Elevation 3264 |

Surface Location

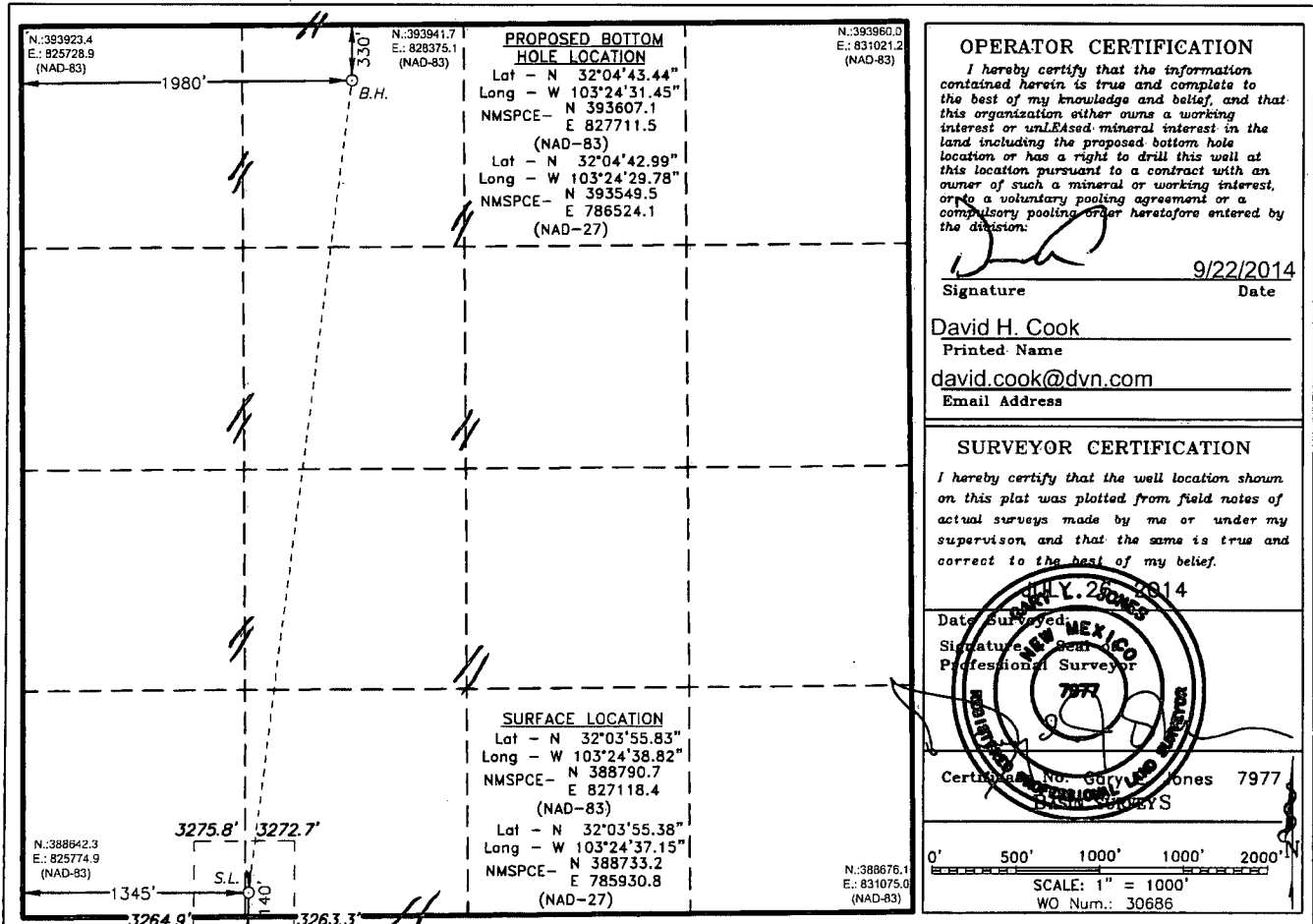
| UL or lot No. | Section | Township | Range | Lot Idn | Feet from the | North/South line | Feet from the | East/West line | County |
|---------------|---------|----------|-------|---------|---------------|------------------|---------------|----------------|--------|
| N | 6 | 26 S | 35 E | | 140 | SOUTH | 1345 | WEST | LEA |

Bottom Hole Location If Different From Surface

| UL or lot No. | Section | Township | Range | Lot Idn | Feet from the | North/South line | Feet from the | East/West line | County |
|---------------|---------|----------|-------|---------|---------------|------------------|---------------|----------------|--------|
| C | 6 | 26 S | 35 E | | 330 | NORTH | 1980 | WEST | LEA |

| | | | |
|-------------------------------|-----------------|--------------------|-----------|
| Dedicated Acres 160 | Joint or Infill | Consolidation Code | Order No. |
|-------------------------------|-----------------|--------------------|-----------|

NO ALLOWABLE WILL BE ASSIGNED TO THIS COMPLETION UNTIL ALL INTERESTS HAVE BEEN CONSOLIDATED OR A NON-STANDARD UNIT HAS BEEN APPROVED BY THE DIVISION

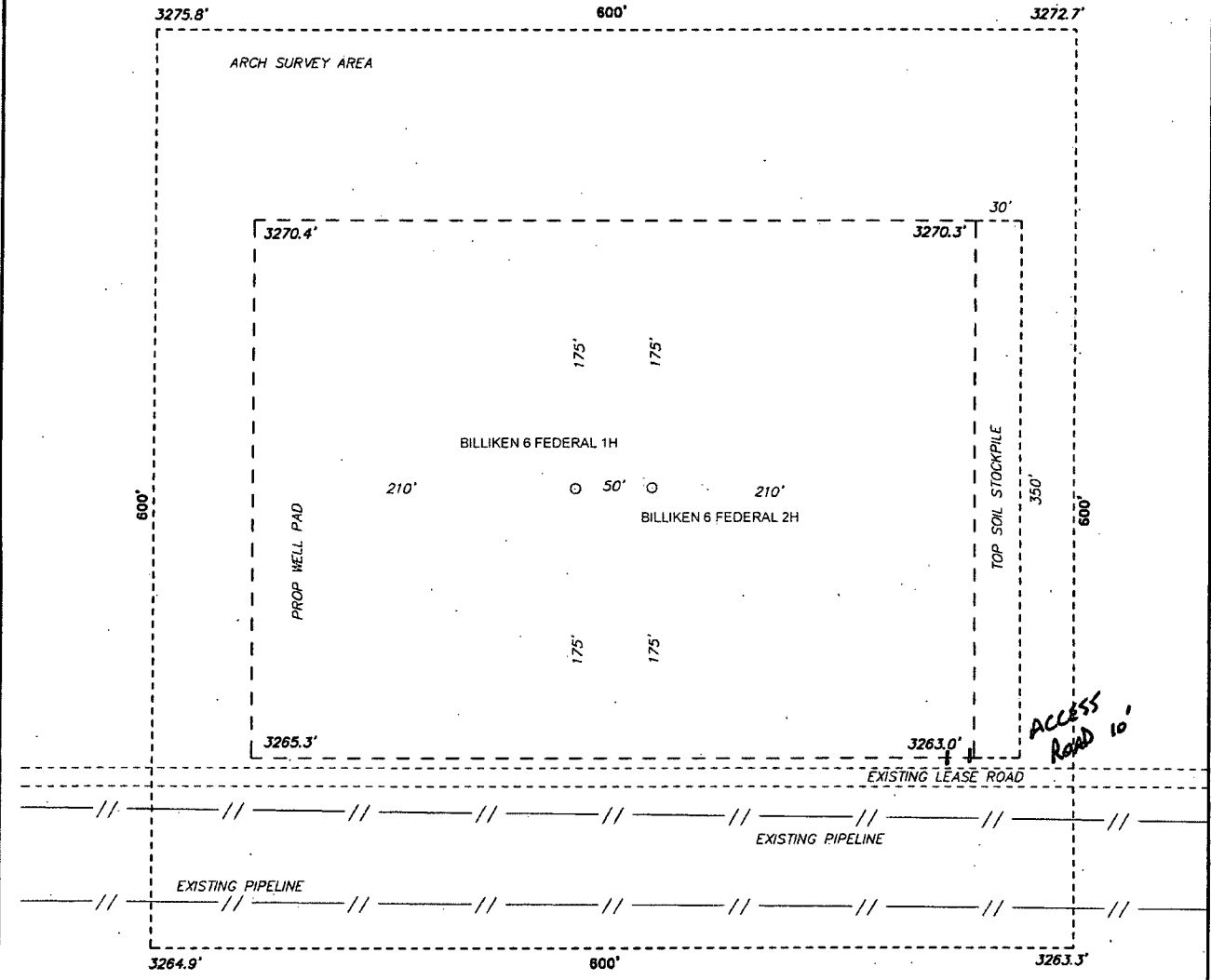


PP: 140 FSL & 1345 FWL

JUL 13 2015

SITE MAP

**SECTION 6, TOWNSHIP 26 SOUTH, RANGE 35 EAST. N.M.P.M.,
LEA COUNTY, NEW MEXICO.**



GRID TRUE
MAGNETIC

100 0 100 200 FEET
SCALE: 1" = 100'

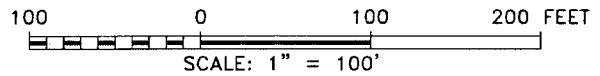
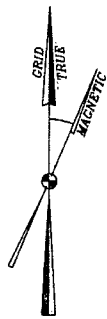
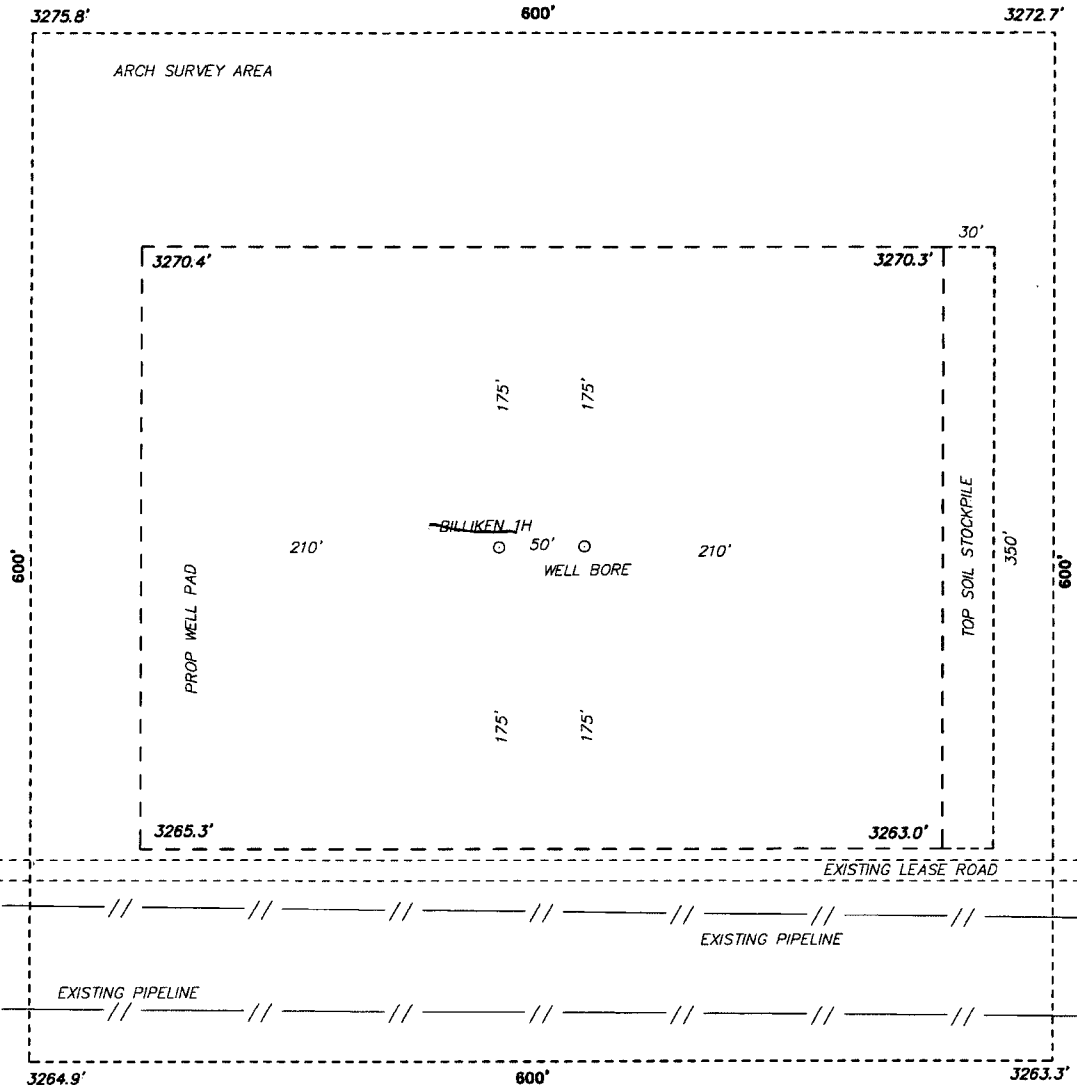
P.O. Box 1786 (575) 393-7316 - Office
1120 N. West County Rd. (575) 392-2206 - Fax
Hobbs, New Mexico 88241 basinsurveys.com

devon

REF: BILLIKEN 6 FEDERAL #2H / WELL PAD TOPO

THE BILLIKEN 6 FEDERAL #2H LOCATED 140' FROM
THE SOUTH LINE AND 1345' FROM THE WEST LINE OF
SECTION 6, TOWNSHIP 26 SOUTH, RANGE 35 EAST.
N.M.P.M., LEA COUNTY, NEW MEXICO.

SECTION 6, TOWNSHIP 26 SOUTH, RANGE 35 EAST. N.M.P.M.,
LEA COUNTY, NEW MEXICO.



basin surveys
focused on excellence
in the oilfield

P.O. Box 1786
1120 N. West County Rd.
Hobbs, New Mexico 88241
(575) 393-7316 - Office
(575) 392-2206 - Fax
basinsurveys.com

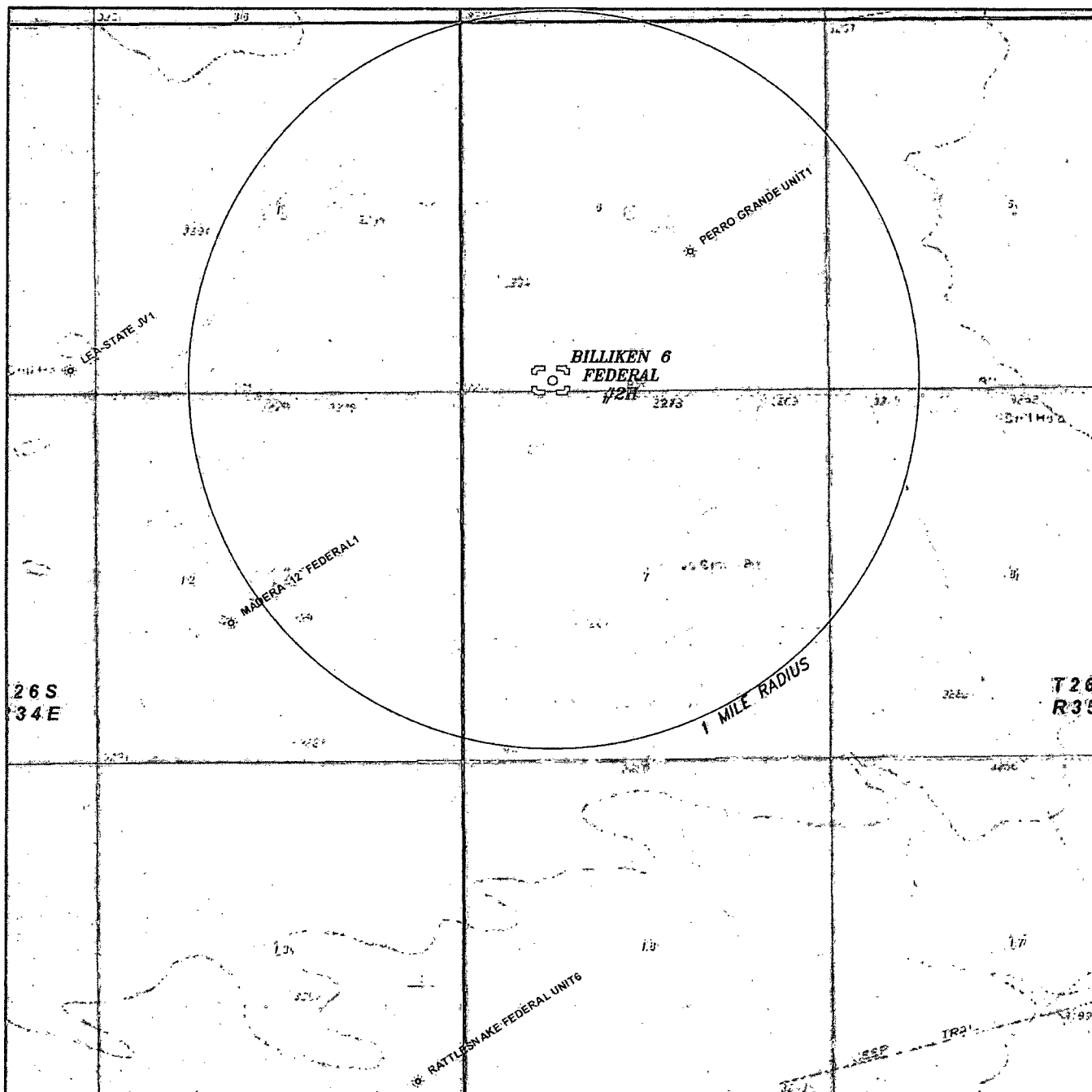
devon

REF: BILLIKEN 6 FEDERAL #2H / WELL PAD TOPO

THE BILLIKEN 6 FEDERAL #2H LOCATED 140' FROM
THE SOUTH LINE AND 1345' FROM THE WEST LINE OF
SECTION 6, TOWNSHIP 26 SOUTH, RANGE 35 EAST.
N.M.P.M., LEA COUNTY, NEW MEXICO.

| | | | | |
|--------------------|---------------------|------------------|-------------------------|---------------------|
| W.O. Number: 30686 | Drawn By: K. NORRIS | Date: 07-30-2014 | Survey Date: 07-26-2014 | Sheet 1 of 1 Sheets |
|--------------------|---------------------|------------------|-------------------------|---------------------|

7111e



BILLIKEN 6 FEDERAL #2H
 Located 140' FSL and 1345' FWL
 Section 6, Township 26 South, Range 35 East,
 N.M.P.M., Lea County, New Mexico.

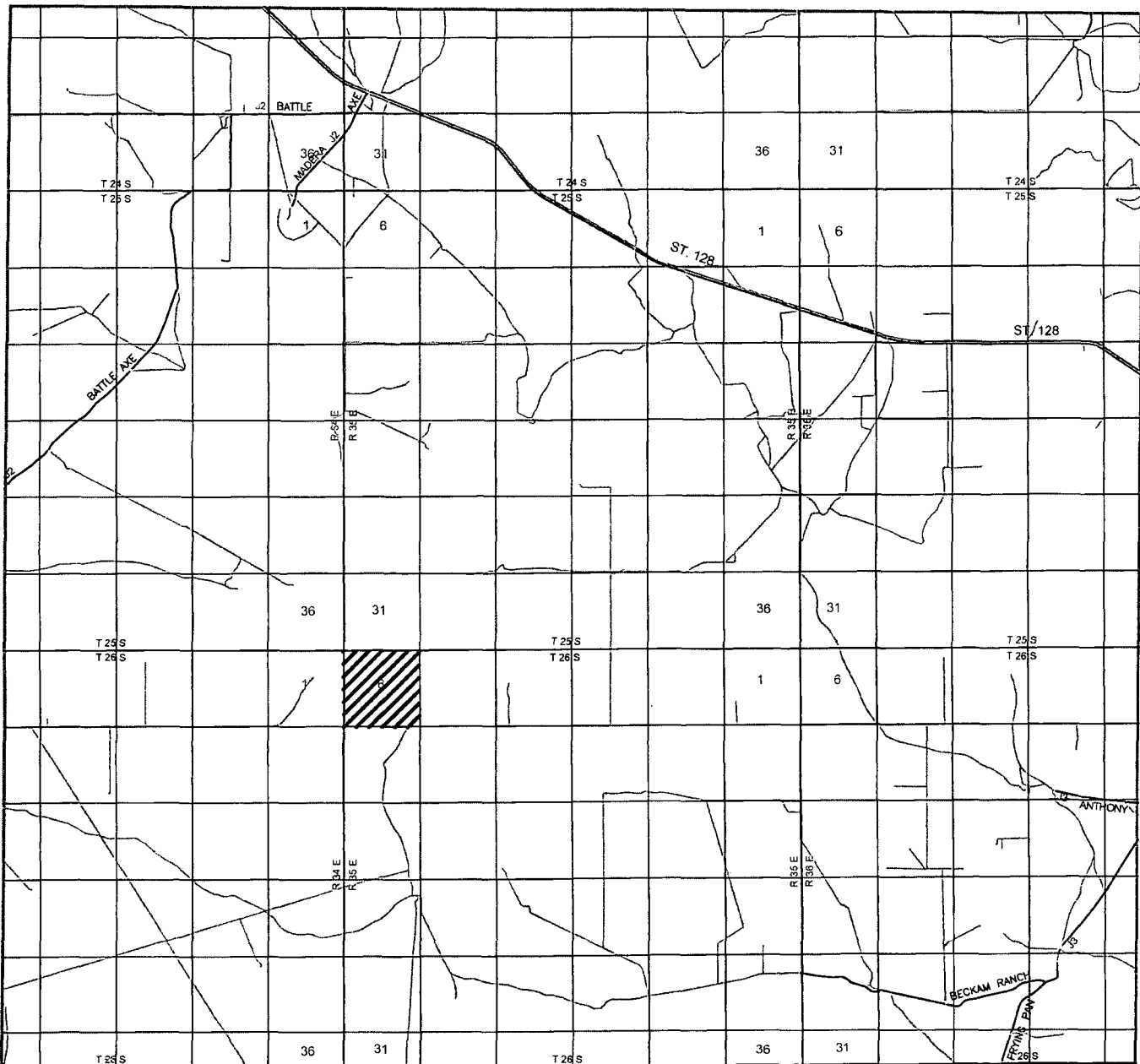
basin surveys
 focused on excellence in the oilfield

P.O. Box 1786
 1120 N. West County Rd.
 Hobbs, New Mexico 88241
 (575) 393-7316 - Office
 (575) 392-2206 - Fax
 basinsurveys.com


0' 1000' 2000' 3000' 4000'
 SCALE: 1" = 2000'

W.O. Number: KAN 30686
 Survey Date: 07-26-2014

YELLOW TINT - USA LAND
 BLUE TINT - STATE LAND
 NATURAL COLOR - FEE LAND



BILLIKEN 6 FEDERAL #2H
 Located 140' FSL and 1345' FWL
 Section 6, Township 26 South, Range 35 East,
 N.M.P.M., Lea County, New Mexico.


 focused on excellence
 in the oilfield

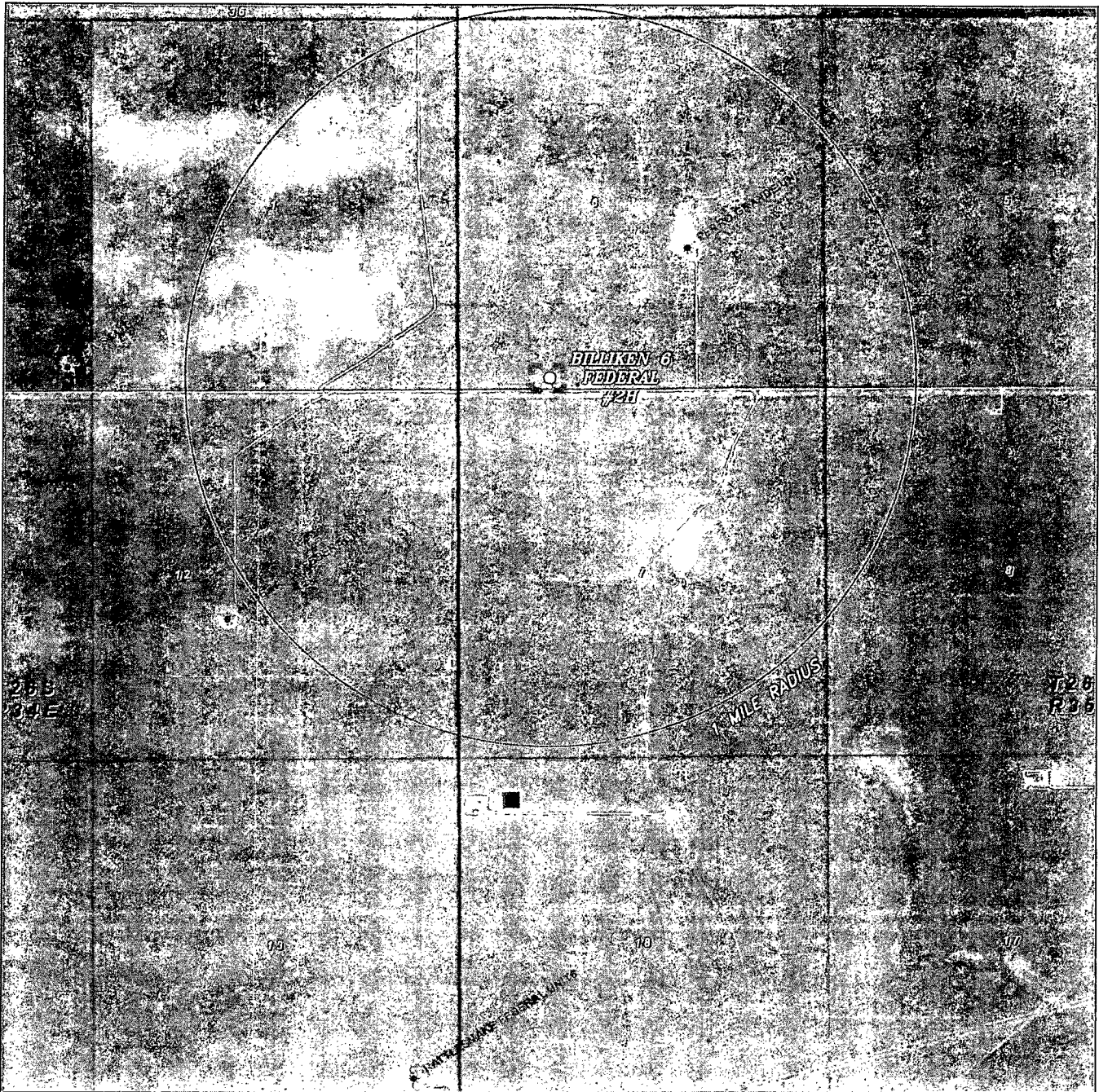
P.O. Box 1786
 1120 N. West County Rd.
 Hobbs, New Mexico 88241
 (575) 393-7316 - Office
 (575) 392-2206 - Fax
 basin-surveys.com

0 1 MI 2 MI 3 MI 4 MI
 SCALE: 1" = 2 MILES

W.O. Number: KAN 30686
 Survey Date: 07-26-2014

YELLOW TINT - USA LAND
 BLUE TINT - STATE LAND
 NATURAL COLOR - FEE LAND





BILLIKEN 6 FEDERAL #2H
 Located 140' FSL and 1345' FWL
 Section 6, Township 26 South, Range 35 East,
 N.M.P.M., Lea County, New Mexico.



P.O. Box 1786
 1120 N. West County Rd.
 Hobbs, New Mexico 88241
 (575) 393-7316 - Office
 (575) 392-2206 - Fax
 basinsurveys.com

0' 1000' 2000' 3000' 4000'

SCALE: 1" = 2000'

W.O. Number: KAN 30686

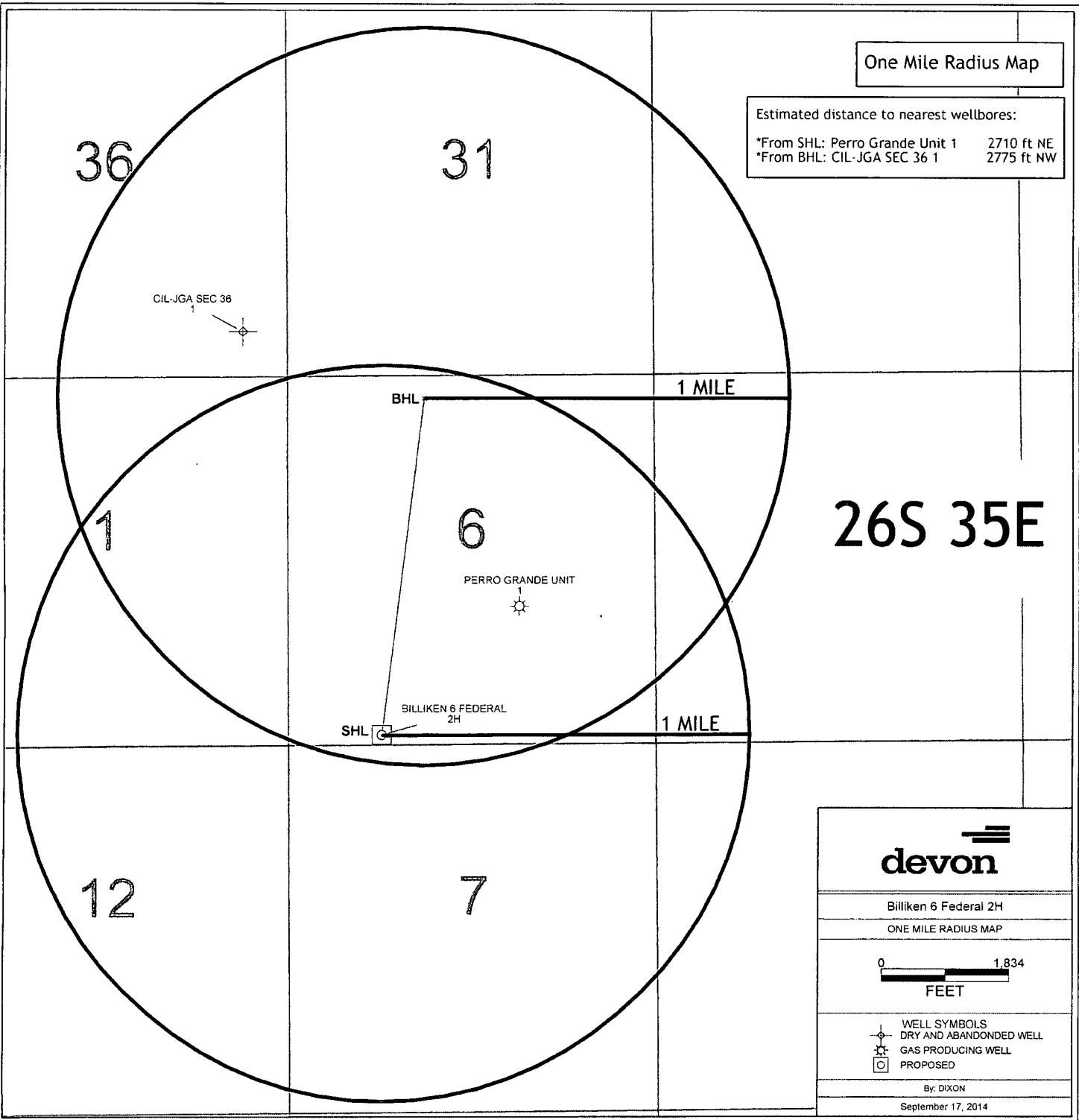
Survey Date: 07-26-2014

YELLOW TINT - USA LAND
 BLUE TINT - STATE LAND
 NATURAL COLOR - FEE LAND



One Mile Radius Map

Estimated distance to nearest wellbores:
*From SHL: Perro Grande Unit 1 2710 ft NE
*From BHL: CIL-JGA SEC 36 1 2775 ft NW



devon

Billiken 6 Federal 2H
ONE MILE RADIUS MAP

0 1,834
FEET

WELL SYMBOLS
DRY AND ABANDONED WELL
GAS PRODUCING WELL
PROPOSED

By: DIXON
September 17, 2014