

Submit 1 Copy To Appropriate District Office
District I - (575) 393-6161
1625 N. French Dr., Hobbs, NM 88240
District II - (575) 748-1283
811 S. First St., Artesia, NM 88210
District III - (505) 334-6178
1000 Rio Brazos Rd., Aztec, NM 87410
District IV - (505) 476-3460
1220 S. St. Francis Dr., Santa Fe, NM 87505

State of New Mexico
Energy, Minerals and Natural Resources

Form C-103
Revised July 18, 2013

OIL CONSERVATION DIVISION
1220 South St. Francis Dr.
Santa Fe, NM 87505

JUL 07 2015

SUNDRY NOTICES AND REPORTS ON WELLS (DO NOT USE THIS FORM FOR PROPOSALS TO DRILL OR TO DEEPEN OR PLUG BACK TO A DIFFERENT RESERVOIR. USE "APPLICATION FOR PERMIT" (FORM C-101) FOR SUCH PROPOSALS.)		WELL API NO. 30-025-40999
1. Type of Well: Oil Well <input checked="" type="checkbox"/> Gas Well <input type="checkbox"/> Other <input type="checkbox"/>		5. Indicate Type of Lease STATE <input checked="" type="checkbox"/> FEE <input type="checkbox"/>
2. Name of Operator DEVON ENERGY PRODUCTION COMPANY, LP.		6. State Oil & Gas Lease No.
3. Address of Operator 333 WEST SHERIDAN AVENUE, OKC, OK 73102		7. Lease Name or Unit Agreement Name Divide 3 State Com
4. Well Location Unit Letter <u>N</u> : <u>660</u> feet from the <u>South</u> line and <u>2440</u> feet from the <u>West</u> line Section <u>3</u> Township <u>22S</u> Range <u>32E</u> NMPM <u>Lea County, New Mexico</u>		8. Well Number <u>1H</u>
11. Elevation (Show whether DR, RKB, RT, GR, etc.) 3802.7'		9. OGRID Number 6137
		10. Pool name or Wildcat 5695 Bilbrey Basin; Bone Spring

12. Check Appropriate Box to Indicate Nature of Notice, Report or Other Data

NOTICE OF INTENTION TO:

PERFORM REMEDIAL WORK ☐ PLUG AND ABANDON ☐
TEMPORARILY ABANDON ☐ CHANGE PLANS ☐
PULL OR ALTER CASING ☐ MULTIPLE COMPL ☐
DOWNHOLE COMMINGLE ☐
CLOSED-LOOP SYSTEM ☐
OTHER: ☐

SUBSEQUENT REPORT OF:

REMEDIAL WORK ☐ ALTERING CASING ☐
COMMENCE DRILLING OPNS. ☐ P AND A ☐
CASING/CEMENT JOB ☐
OTHER: Drilling Operations: Additional 2' ☒

13. Describe proposed or completed operations. (Clearly state all pertinent details, and give pertinent dates, including estimated date of starting any proposed work). SEE RULE 19.15.7.14 NMAC. For Multiple Completions: Attach wellbore diagram of proposed completion or recompletion.

06/29/15

MIRU. Butches Rat Hole Services. Drilled additional 2' on the above well for a total of 102'. Drill time was 1 hour.

Spud Date:

Rig Release Date:

I hereby certify that the information above is true and complete to the best of my knowledge and belief.

SIGNATURE Erin Workman TITLE Regulatory Compliance Professional DATE 06.30.15

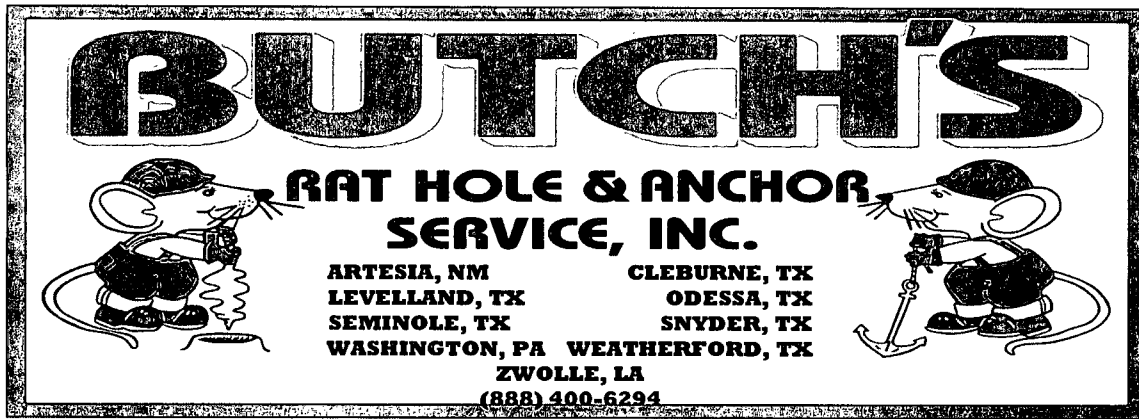
Type or print name Erin L. Workman E-mail address: Erin.workman@dmn.com PHONE: (405) 552-7970

For State Use Only

APPROVED BY: Accepted for Record Only DATE
Conditions of Approval (if any):

JUL 13 2015

dm



MARCH 5, 2013

DEVON
AMANDA GREENWOOD
Amanda.Greenwood@dvn.com

ON FEBRUARY 27, 2013, WE SET 10' X 30" PIPE WITH A LID ON THE DIVIDE 3 STATE COM 1H. WE CEMENTED THE 30" CASING 3' FROM THE TOP AND BACK FILLED IT WITH DIRT TO THE TOP. DRILL TIME WAS 1 HOUR.

ON MARCH 18, 2013, WE DRILLED AN ADDITIONAL 2' ON THE ABOVE WELL FOR A TOTAL OF 12' DRILLED SO FAR. DRILL TIME WAS 1 HOUR.

ON APRIL 5, 2013, WE DRILLED AN ADDITIONAL 2' ON THE ABOVE WELL FOR A TOTAL OF 14' DRILLED SO FAR. DRILL TIME WAS 1 HOUR.

ON APRIL 24, 2013, WE DRILLED AN ADDITIONAL 2' ON THE ABOVE WELL FOR A TOTAL OF 16' DRILLED SO FAR. DRILL TIME WAS 1 HOUR.

ON MAY 13, 2013, WE DRILLED AN ADDITIONAL 2' ON THE ABOVE WELL FOR A TOTAL OF 18' DRILLED SO FAR. DRILL TIME WAS 1 HOUR.

ON MAY 31, 2013, WE DRILLED AN ADDITIONAL 2' ON THE ABOVE WELL FOR A TOTAL OF 20' DRILLED SO FAR. DRILL TIME WAS 1 HOUR.

ON JUNE 19, 2013, WE DRILLED AN ADDITIONAL 2' ON THE ABOVE WELL FOR A TOTAL OF 22' DRILLED SO FAR. DRILL TIME WAS 1 HOUR.

ON JULY 8, 2013, WE DRILLED AN ADDITIONAL 2' ON THE ABOVE WELL FOR A TOTAL OF 24' DRILLED SO FAR. DRILL TIME WAS 1 HOUR.

ON JULY 26, 2013, WE DRILLED AN ADDITIONAL 2' ON THE ABOVE WELL FOR A TOTAL OF 26' DRILLED SO FAR. DRILL TIME WAS 1 HOUR.

ON AUGUST 14, 2013, WE DRILLED AN ADDITIONAL 2' ON THE ABOVE WELL FOR A TOTAL OF 28' DRILLED SO FAR. DRILL TIME WAS 1 HOUR.

ON AUGUST 30, 2013, WE DRILLED AN ADDITIONAL 2' ON THE ABOVE WELL FOR A TOTAL OF 30' DRILLED SO FAR. DRILL TIME WAS 1 HOUR.

ON SEPTEMBER 18, 2013, WE DRILLED AN ADDITIONAL 2' ON THE ABOVE WELL FOR A TOTAL OF 32' DRILLED SO FAR. DRILL TIME WAS 1 HOUR.

ON OCTOBER 7, 2013, WE DRILLED AN ADDITIONAL 2' ON THE ABOVE WELL FOR A TOTAL OF 34' DRILLED SO FAR. DRILL TIME WAS 1 HOUR.

ON OCTOBER 25, 2013, WE DRILLED AN ADDITIONAL 2' ON THE ABOVE WELL FOR A TOTAL OF 36' DRILLED SO FAR. DRILL TIME WAS 1 HOUR.

ON NOVEMBER 13, 2013, WE DRILLED AN ADDITIONAL 2' ON THE ABOVE WELL FOR A TOTAL OF 38' DRILLED SO FAR. DRILL TIME WAS 1 HOUR.

ON DECEMBER 2, 2013, WE DRILLED AN ADDITIONAL 2' ON THE ABOVE WELL FOR A TOTAL OF 40' DRILLED SO FAR. DRILL TIME WAS 1 HOUR.

ON DECEMBER 20, 2013, WE DRILLED AN ADDITIONAL 2' ON THE ABOVE WELL FOR A TOTAL OF 42' DRILLED SO FAR. DRILL TIME WAS 1 HOUR.

ON JANUARY 8, 2014, WE DRILLED AN ADDITIONAL 2' ON THE ABOVE WELL FOR A TOTAL OF 44' DRILLED SO FAR. DRILL TIME WAS 1 HOUR.

ON JANUARY 27, 2014, WE DRILLED AN ADDITIONAL 2' ON THE ABOVE WELL FOR A TOTAL OF 46' DRILLED SO FAR. DRILL TIME WAS 1 HOUR.

ON FEBRUARY 14, 2014, WE DRILLED AN ADDITIONAL 2' ON THE ABOVE WELL FOR A TOTAL OF 48' DRILLED SO FAR. DRILL TIME WAS 1 HOUR.

ON MARCH 5, 2014, WE DRILLED AN ADDITIONAL 2' ON THE ABOVE WELL FOR A TOTAL OF 50' DRILLED SO FAR. DRILL TIME WAS 1 HOUR.

ON MARCH 24, 2014, WE DRILLED AN ADDITIONAL 2' ON THE ABOVE WELL FOR A TOTAL OF 52' DRILLED SO FAR. DRILL TIME WAS 1 HOUR.

ON APRIL 11, 2014, WE DRILLED AN ADDITIONAL 2' ON THE ABOVE WELL FOR A TOTAL OF 54' DRILLED SO FAR. DRILL TIME WAS 1 HOUR.

ON APRIL 30, 2014, WE DRILLED AN ADDITIONAL 2' ON THE ABOVE WELL FOR A TOTAL OF 56' DRILLED SO FAR. DRILL TIME WAS 1 HOUR.

ON MAY 19, 2014, WE DRILLED AN ADDITIONAL 2' ON THE ABOVE WELL FOR A TOTAL OF 58' DRILLED SO FAR. DRILL TIME WAS 1 HOUR.

ON JUNE 6, 2014, WE DRILLED AN ADDITIONAL 2' ON THE ABOVE WELL FOR A TOTAL OF 60' DRILLED SO FAR. DRILL TIME WAS 1 HOUR.

ON JUNE 25, 2014, WE DRILLED AN ADDITIONAL 2' ON THE ABOVE WELL FOR A TOTAL OF 62' DRILLED SO FAR. DRILL TIME WAS 1 HOUR.

ON JULY 14, 2014, WE DRILLED AN ADDITIONAL 2' ON THE ABOVE WELL FOR A TOTAL OF 64' DRILLED SO FAR. DRILL TIME WAS 1 HOUR.

ON AUGUST 1, 2014, WE DRILLED AN ADDITIONAL 2' ON THE ABOVE WELL FOR A TOTAL OF 66' DRILLED SO FAR. DRILL TIME WAS 1 HOUR.

ON AUGUST 20, 2014, WE DRILLED AN ADDITIONAL 2' ON THE ABOVE WELL FOR A TOTAL OF 68' DRILLED SO FAR. DRILL TIME WAS 1 HOUR.

ON SEPTEMBER 8, 2014, WE DRILLED AN ADDITIONAL 2' ON THE ABOVE WELL FOR A TOTAL OF 70' DRILLED SO FAR. DRILL TIME WAS 1 HOUR.

ON SEPTEMBER 26, 2014, WE DRILLED AN ADDITIONAL 2' ON THE ABOVE WELL FOR A TOTAL OF 72' DRILLED SO FAR. DRILL TIME WAS 1 HOUR.

ON OCTOBER 15, 2014, WE DRILLED AN ADDITIONAL 2' ON THE ABOVE WELL FOR A TOTAL OF 74' DRILLED SO FAR. DRILL TIME WAS 1 HOUR.

ON NOVEMBER 3, 2014, WE DRILLED AN ADDITIONAL 2' ON THE ABOVE WELL FOR A TOTAL OF 76' DRILLED SO FAR. DRILL TIME WAS 1 HOUR.

ON NOVEMBER 21, 2014, WE DRILLED AN ADDITIONAL 2' ON THE ABOVE WELL FOR A TOTAL OF 78' DRILLED SO FAR. DRILL TIME WAS 1 HOUR.

ON DECEMBER 10, 2014, WE DRILLED AN ADDITIONAL 2' ON THE ABOVE WELL FOR A TOTAL OF 80' DRILLED SO FAR. DRILL TIME WAS 1 HOUR.

ON DECEMBER 19, 2014, WE DRILLED AN ADDITIONAL 2' ON THE ABOVE WELL FOR A TOTAL OF 82' DRILLED SO FAR. DRILL TIME WAS 1 HOUR.

ON JANUARY 16, 2015, WE DRILLED AN ADDITIONAL 2' ON THE ABOVE WELL FOR A TOTAL OF 84' DRILLED SO FAR. DRILL TIME WAS 1 HOUR.

ON FEBRUARY 4, 2015, WE DRILLED AN ADDITIONAL 2' ON THE ABOVE WELL FOR A TOTAL OF 86' DRILLED SO FAR. DRILL TIME WAS 1 HOUR.

ON FEBRUARY 23, 2015, WE DRILLED AN ADDITIONAL 2' ON THE ABOVE WELL FOR A TOTAL OF 88' DRILLED SO FAR. DRILL TIME WAS 1 HOUR.

ON MARCH 13, 2015, WE DRILLED AN ADDITIONAL 2' ON THE ABOVE WELL FOR A TOTAL OF 90' DRILLED SO FAR. DRILL TIME WAS 1 HOUR.

ON APRIL 1, 2015, WE DRILLED AN ADDITIONAL 2' ON THE ABOVE WELL FOR A TOTAL OF 92' DRILLED SO FAR. DRILL TIME WAS 1 HOUR.

ON APRIL 15, 2015, WE DRILLED AN ADDITIONAL 2' ON THE ABOVE WELL FOR A TOTAL OF 94' DRILLED SO FAR. DRILL TIME WAS 1 HOUR.

ON MAY 4, 2015, WE DRILLED AN ADDITIONAL 2' ON THE ABOVE WELL FOR A TOTAL OF 96' DRILLED SO FAR. DRILL TIME WAS 1 HOUR.

ON MAY 22, 2015, WE DRILLED AN ADDITIONAL 2' ON THE ABOVE WELL FOR A TOTAL OF 98' DRILLED SO FAR. DRILL TIME WAS 1 HOUR.

ON JUNE 10, 2015, WE DRILLED AN ADDITIONAL 2' ON THE ABOVE WELL FOR A TOTAL OF 100' DRILLED SO FAR. DRILL TIME WAS 1 HOUR.

ON JUNE 29, 2015, WE DRILLED AN ADDITIONAL 2' ON THE ABOVE WELL FOR A TOTAL OF 102' DRILLED SO FAR. DRILL TIME WAS 1 HOUR.

PLEASE LET ME KNOW IF YOU HAVE ANY QUESTIONS.

REGARDS,

LEE SELLERS

DRILLING SERVICES COORDINATOR