

District I  
1625 N. French Dr., Hobbs, NM 88240  
Phone: (575) 393-6161 Fax: (575) 393-0720  
District II  
811 S. First St., Artesia, NM 88210  
Phone: (575) 748-1283 Fax: (575) 748-9720  
District III  
1000 Rio Brazos Road, Aztec, NM 87410  
Phone: (505) 334-6178 Fax: (505) 334-6170  
District IV  
1220 S. St. Francis Dr., Santa Fe, NM 87505  
Phone: (505) 476-3460 Fax: (505) 476-3462

State of New Mexico  
Energy, Minerals & Natural Resources Department  
OIL CONSERVATION DIVISION  
1220 South St. Francis Dr.  
Santa Fe, NM 87505

Form C-102  
Revised August 1, 2011  
Submit one copy to appropriate  
District Office

☐ AMENDED REPORT

WELL LOCATION AND ACREAGE DEDICATION PLAT

<sup>1</sup> API Number 30-025- <b>42712</b>		<sup>2</sup> Pool Code 62180	<sup>3</sup> Pool Name Vacuum; Grayburg, San Andres
<sup>4</sup> Property Code 31172	<sup>5</sup> Property Name EAST VACUUM GBAS UNIT 2739		<sup>6</sup> Well Number 525W
<sup>7</sup> OGRID No. 217817	<sup>8</sup> Operator Name ConocoPhillips Company		<sup>9</sup> Elevation 3933'

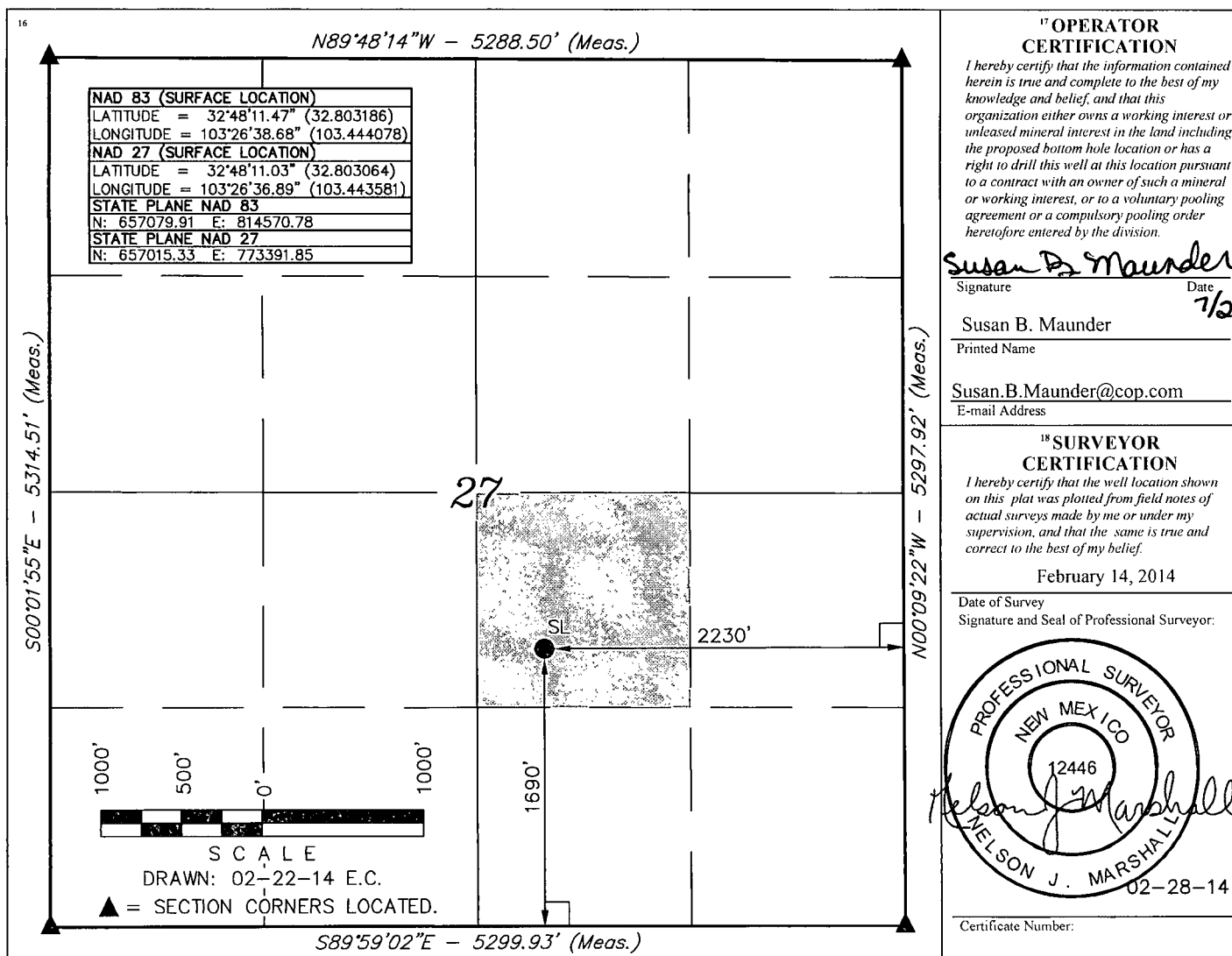
<sup>10</sup> Surface Location

UL or lot no.	Section	Township	Range	Lot Idn	Feet from the	North/South line	Feet from the	East/West line	County
J	27	17S	35S		1690	SOUTH	2230	EAST	LEA

<sup>11</sup> Bottom Hole Location If Different From Surface

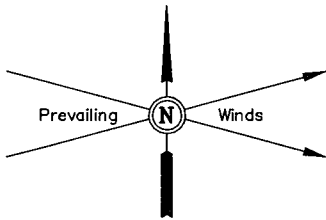
UL or lot no.	Section	Township	Range	Lot Idn	Feet from the	North/South line	Feet from the	East/West line	County
<sup>12</sup> Dedicated Acres 40	<sup>13</sup> Joint or Infill	<sup>14</sup> Consolidation Code	<sup>15</sup> Order No. WFX-945						

No allowable will be assigned to this completion until all interests have been consolidated or a non-standard unit has been approved by the division.



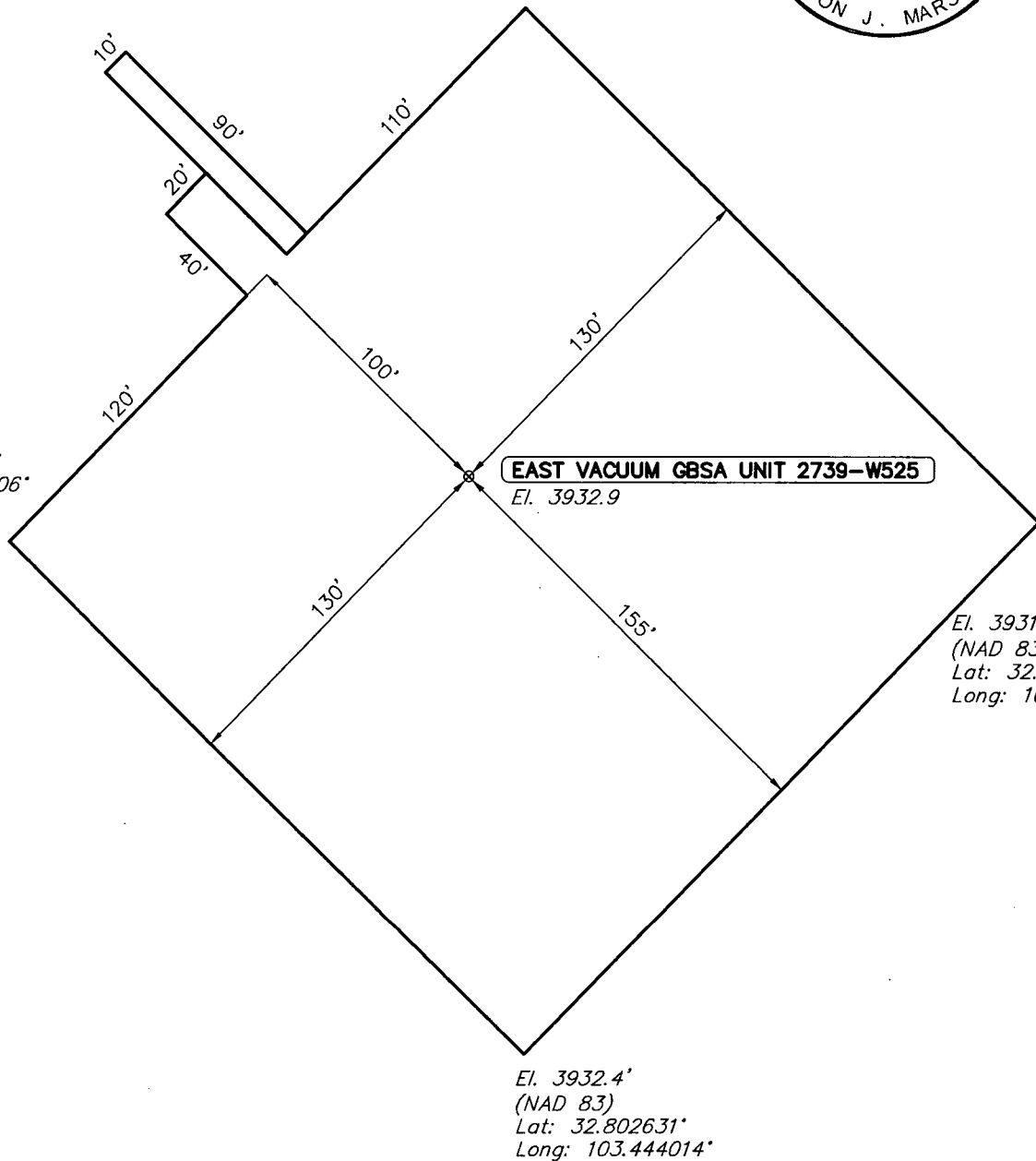
AUG 04 2015

Pr.



El. 3933.7'  
(NAD 83)  
Lat: 32.803633°  
Long: 103.444014°

El. 3933.4'  
(NAD 83)  
Lat: 32.803122°  
Long: 103.444606°



El. 3931.4'  
(NAD 83)  
Lat: 32.803142°  
Long: 103.443422°

El. 3932.4'  
(NAD 83)  
Lat: 32.802631°  
Long: 103.444014°

ELEV. UNGRADED GROUND AT LOC. STAKE = 3932.9'

**NOTES:**

- Flare pit is to be located a min. of 100' from the well head.
- Underground utilities shown on this sheet are for visualization purposes only, actual locations to be determined prior to construction.

ConocoPhillips

**ConocoPhillips Company**

**EAST VACUUM GBSA UNIT 2739-W525**  
SECTION 27, T17S, R35E, N.M.P.M.  
1690' FSL 2230' FEL

DRAWN BY: E.C.

SCALE: 1" = 60'

DATE: 02-22-14

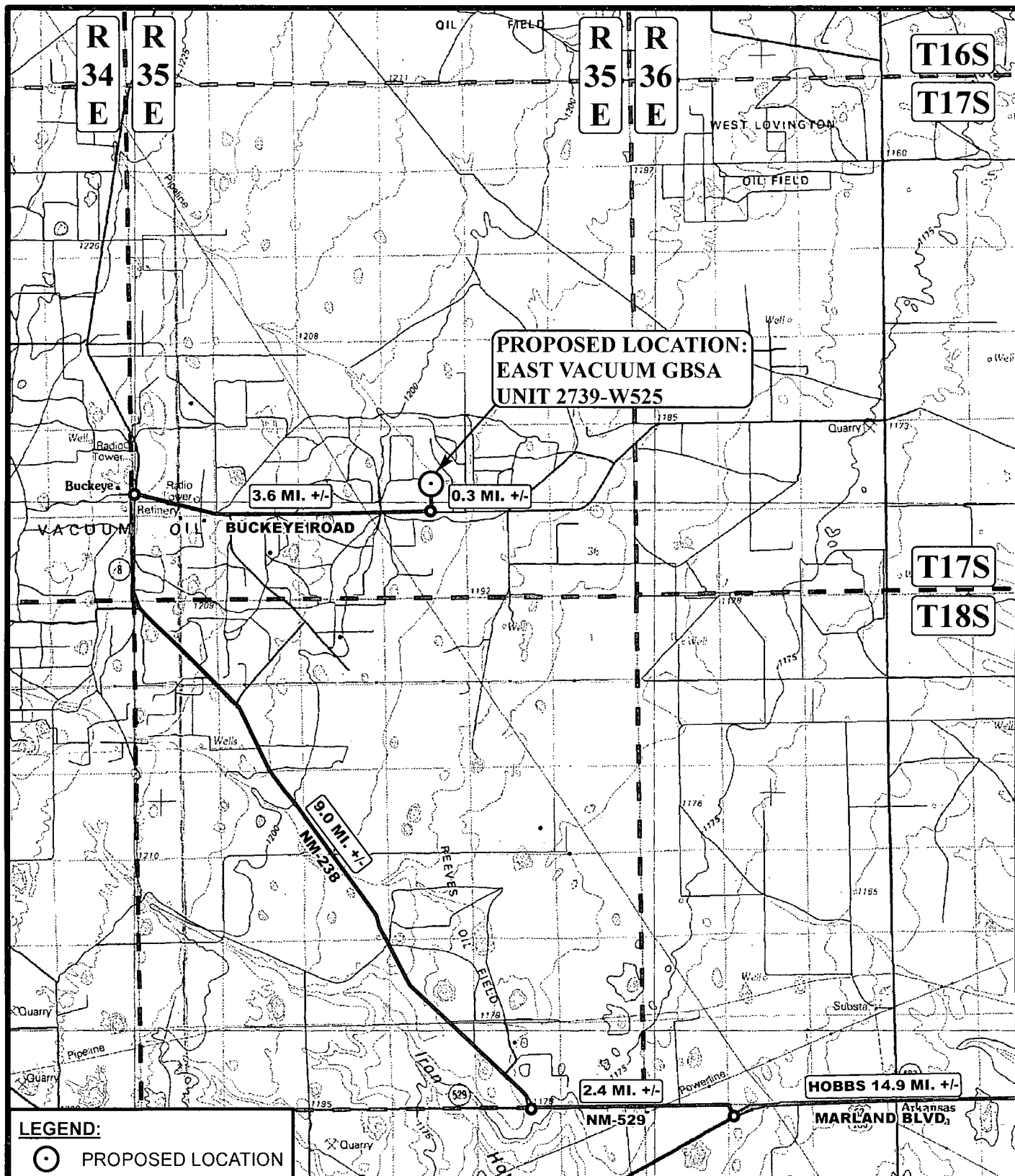
REVISED:

**LOCATION LAYOUT**

**FIGURE #1**



Corporate Office \* 85 South 200 East  
Vernal, UT 84078 \* (435) 789-1017



The map displays a topographic area with contour lines and elevation markers. A large circle highlights a central region containing numerous black dots representing existing wells. A specific location within this circle is marked with a diamond and an arrow, labeled as the proposed location for the East Vacuum GBSA Unit 2739-W525. The map includes various labels such as 'R 35 E' in the top left, 'T17S' and 'T18S' in the bottom right, and 'LEGEND: EXISTING WELLS' in the bottom left. Other features include 'Gravel', 'AQUEDUCT', and 'BM' (benchmark) markers.

**T18S**

TOPO C