

District I
1625 N. French Dr., Hobbs, NM 88240
Phone: (575) 393-6161 Fax: (575) 393-0720
District II
811 S. First St., Artesia, NM 88210
Phone: (575) 748-1283 Fax: (575) 748-9720
District III
1000 Rio Brazos Road, Artes, NM 87410
Phone: (505) 334-6178 Fax: (505) 334-6170
District IV
1320 S. St. Francis Dr., Santa Fe, NM 87505
Phone: (505) 476-3460 Fax: (505) 476-3462

State of New Mexico
Energy, Minerals & Natural Resources Department
OIL CONSERVATION DIVISION
1220 South St. Francis Dr.
Santa Fe, NM 87505

Form C-102
Revised August 1, 2011
Submit one copy to appropriate
District Office

☐ AMENDED REPORT

WELL LOCATION AND ACREAGE DEDICATION PLAT

¹ API Number 30-025-42778	² Pool Code 97922	³ Pool Name WC025G06S223421L; Bone Spring
⁴ Property Code 30863	⁵ Property Name GAUCHO UNIT	⁶ Well Number 20Y
⁷ OGRID No. 6137	⁸ Operator Name DEVON ENERGY PRODUCTION COMPANY, L.P.	⁹ Elevation 3430.4

Surface Location

UL or lot no.	Section	Township	Range	Lot Idn	Feet from the	North/South line	Feet from the	East/West line	County
N	29	22 S	34 E		200	SOUTH	1475	WEST	LEA

Bottom Hole Location If Different From Surface

UL or lot no.	Section	Township	Range	Lot Idn	Feet from the	North/South line	Feet from the	East/West line	County
K	20	22 S	34 E		2310	SOUTH	1335	WEST	LEA

¹² Dedicated Acres	¹³ Joint or Infill	¹⁴ Consolidation Code	¹⁵ Order No.
240 ac			

No allowable will be assigned to this completion until all interests have been consolidated or a non-standard unit has been approved by the division.

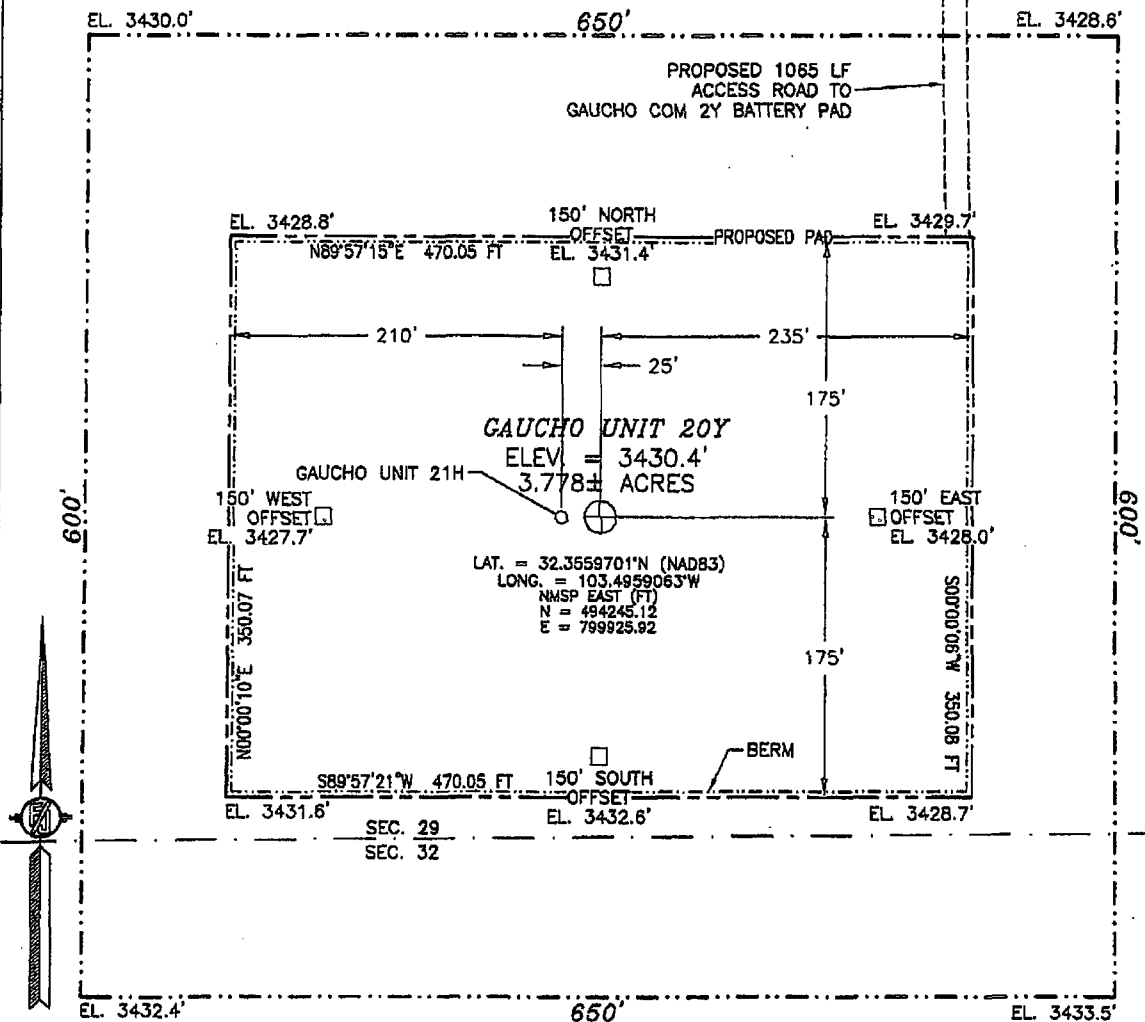
	<p>OPERATOR CERTIFICATION</p> <p>I hereby certify that the information contained herein is true and complete to the best of my knowledge and belief, and that this organization either owns a working interest or retained mineral interest in the land including the proposed bottom hole location or has a right to drill this well at this location pursuant to a contract with an owner of such a mineral or working interest, or to a voluntary pooling agreement or a compulsory pooling order heretofore entered by the division.</p> <p><i>Trina C. Couch</i> 9/5/15 Signature Date</p> <p>Trina C. Couch, Regulatory Analyst Printed Name</p> <p>trina.couch@dmv.com E-mail Address</p>
	<p>SURVEYOR CERTIFICATION</p> <p>I hereby certify that the well location shown on this plat was plotted from field notes of actual surveys made by me or under my supervision, and that the same is true and correct to the best of my belief.</p> <p>SEPTEMBER 7 2015 Date of Survey</p> <p><i>David F. Jaramillo</i> Signature and Seal of Professional Surveyor</p> <p>Completion Number: 21338 SURVEY NO. 21338</p>

SEP 09 2015

SECTION 29, TOWNSHIP 22 SOUTH, RANGE 34 EAST, N.M.P.M.
LEA COUNTY, STATE OF NEW MEXICO

SITE MAP

NOTE: LATITUDE AND LONGITUDE COORDINATES ARE SHOWN USING THE NORTH AMERICAN DATUM OF 1983 (NAD83). LISTED NEW MEXICO STATE PLANE EAST COORDINATES ARE GRID (NAD83). BASIS OF BEARING AND DISTANCES USED ARE NEW MEXICO STATE PLANE EAST COORDINATES MODIFIED TO THE SURFACE



0 10 50 100 200

SCALE 1" = 100'

DIRECTIONS TO LOCATION

FROM THE INTERSECTION OF STATE HIGHWAY 128 AND DELAWARE BASIN ROAD GO NORTH AND EAST ON DELAWARE BASIN ROAD APPROX. 9.5 MILES TO LEASE ROAD ON LEFT (NORTH) TURN NORTH ON LEASE ROAD GO APPROX. 2.3 MILES TO LEASE ROAD ON LEFT (WEST) TURN WEST GO APPROX. 0.65 OF A MILE TO EXISTING DEVON PAD (GAUCHO COM 2Y BATTERY) AT SOUTHWEST CORNER OF PAD A ROAD LATH WITH RED AND WHITE FLAGGING, FOLLOW LATHS SOUTH APPROX. 1065' TO THE NORTHEAST PAD CORNER FOR THIS LOCATION.

DEVON ENERGY PRODUCTION COMPANY, L.P.

GAUCHO UNIT 20Y

LOCATED 200 FT. FROM THE SOUTH LINE
AND 1475 FT. FROM THE WEST LINE OF

SECTION 29, TOWNSHIP 22 SOUTH,
RANGE 34 EAST, N.M.P.M.

LEA COUNTY, STATE OF NEW MEXICO

SEPTEMBER 7, 2015

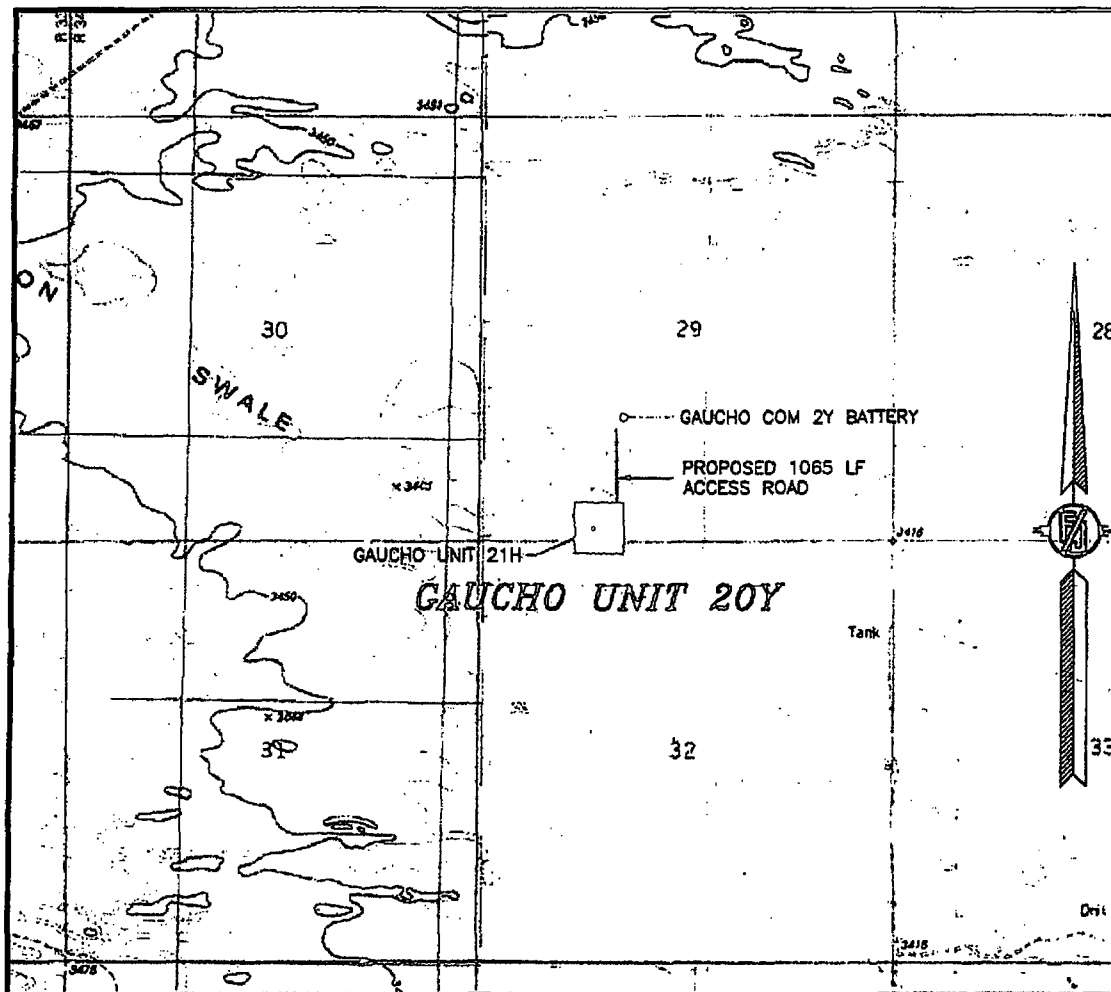
SURVEY NO. 2133B

MADRON SURVEYING, INC.

301 SOUTH CANAL
(975) 234-3341

CARLSBAD, NEW MEXICO

SECTION 29, TOWNSHIP 22 SOUTH, RANGE 34 EAST, N.M.P.M.
LEA COUNTY, STATE OF NEW MEXICO
LOCATION VERIFICATION MAP



USGS QUAD MAP:
SAN SIMON RANCH

NOT TO SCALE

DEVON ENERGY PRODUCTION COMPANY, L.P.

GAUCHO UNIT 20Y

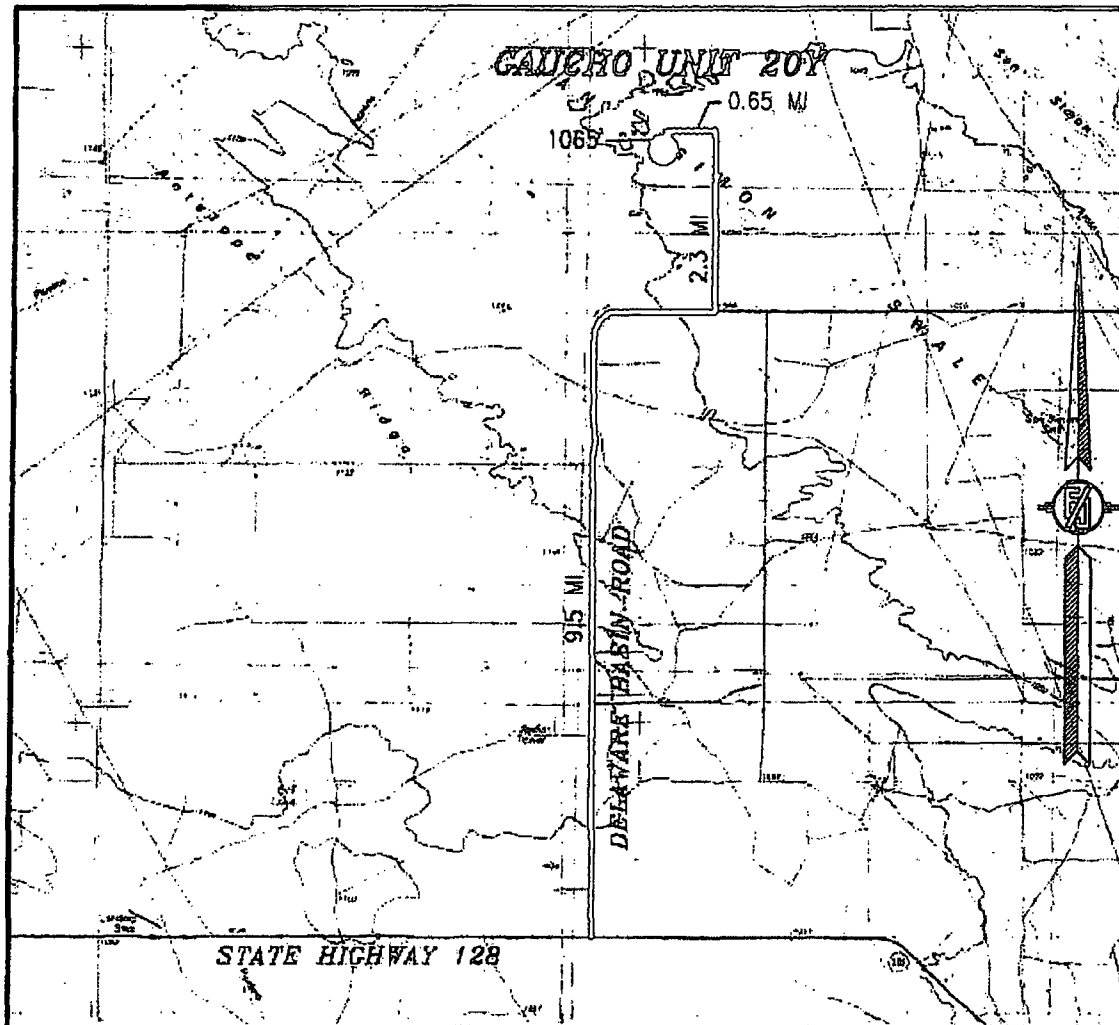
LOCATED 200 FT. FROM THE SOUTH LINE
AND 1475 FT. FROM THE WEST LINE OF
SECTION 29, TOWNSHIP 22 SOUTH,
RANGE 34 EAST, N.M.P.M.
LEA COUNTY, STATE OF NEW MEXICO

SEPTEMBER 7, 2015

SURVEY NO. 2133B

MADRON SURVEYING, INC. 301 SOUTH CANAL (575) 234-3341 CARLSBAD, NEW MEXICO

SECTION 29, TOWNSHIP 22 SOUTH, RANGE 34 EAST, N.M.P.M.
LEA COUNTY, STATE OF NEW MEXICO
VICINITY MAP



DISTANCES IN MILES

NOT TO SCALE

DEVON ENERGY PRODUCTION COMPANY, L.P.
CAUCHITO UNIT 20Y

LOCATED 200 FT. FROM THE SOUTH LINE
AND 1475 FT. FROM THE WEST LINE OF
SECTION 29, TOWNSHIP 22 SOUTH,
RANGE 34 EAST, N.M.P.M.
LEA COUNTY, STATE OF NEW MEXICO

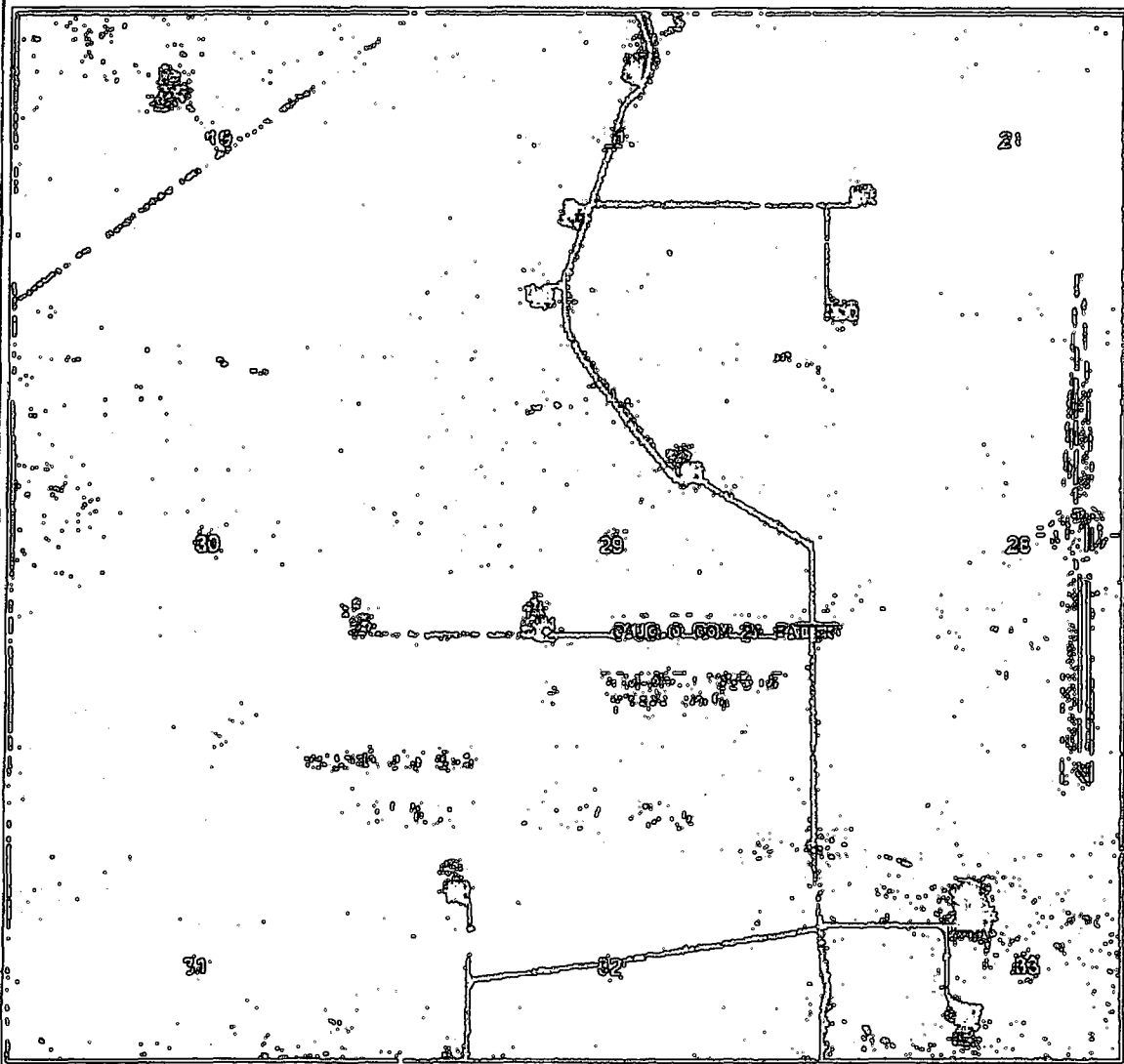
SEPTEMBER 7, 2015

DIRECTIONS TO LOCATION
FROM THE INTERSECTION OF STATE HIGHWAY 128 AND DELAWARE
BASIN ROAD GO NORTH AND EAST ON DELAWARE BASIN ROAD
APPROX. 9.5 MILES TO LEASE ROAD ON LEFT (NORTH) TURN NORTH
ON LEASE ROAD GO APPROX. 2.5 MILES TO LEASE ROAD ON LEFT
(WEST) TURN WEST GO APPROX. 0.65 OF A MILE TO EXISTING DEVON
PAD (CAUCHITO COM 2Y BATTERY) AT SOUTHWEST CORNER OF PAD A
ROAD LATH WITH RED AND WHITE FLAGGING. FOLLOW LATHS SOUTH
APPROX. 1085' TO THE NORTHEAST PAD CORNER FOR THIS LOCATION.

MADRON SURVEYING, INC. 301 SOUTH CANAL (575) 234-3341 CARLSBAD, NEW MEXICO

SURVEY NO. 2133B

SECTION 29, TOWNSHIP 22 SOUTH, RANGE 34 EAST, N.M.P.M.
LEA COUNTY, STATE OF NEW MEXICO
AERIAL PHOTO



NOT TO SCALE
AERIAL PHOTO:
GOOGLE EARTH
FEBRUARY 2014

DEVON ENERGY PRODUCTION COMPANY, L.P.
GAUCHO UNIT 20Y

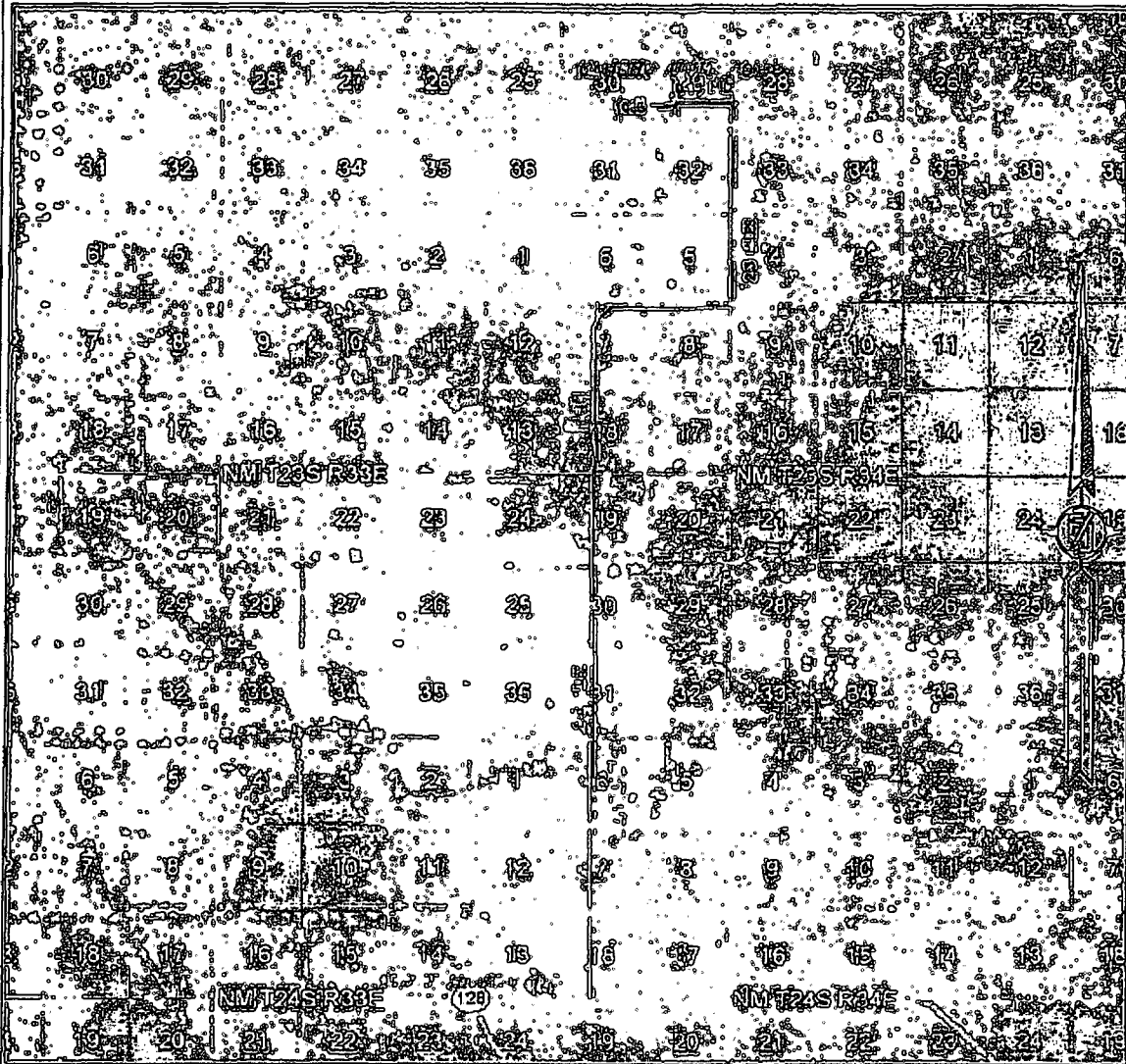
LOCATED 200 FT. FROM THE SOUTH LINE
AND 1475 FT. FROM THE WEST LINE OF
SECTION 29, TOWNSHIP 22 SOUTH,
RANGE 34 EAST, N.M.P.M.
LEA COUNTY, STATE OF NEW MEXICO

SEPTEMBER 7, 2015

SURVEY NO. 2133B

MADRON SURVEYING, INC. 301 SOUTH CANAL (575) 234-3341 CARLSBAD, NEW MEXICO

SECTION 29, TOWNSHIP 22 SOUTH, RANGE 34 EAST, N.M.P.M.
LEA COUNTY, STATE OF NEW MEXICO
ACCESS AERIAL ROUTE MAP



NOT TO SCALE
AERIAL PHOTO:
GOOGLE EARTH
FEBRUARY 2014

DEVON ENERGY PRODUCTION COMPANY, L.P.
GAUCHO UNIT 20Y
LOCATED 200 FT. FROM THE SOUTH LINE
AND 1475 FT. FROM THE WEST LINE OF
SECTION 29, TOWNSHIP 22 SOUTH,
RANGE 34 EAST, N.M.P.M.
LEA COUNTY, STATE OF NEW MEXICO

SEPTEMBER 7, 2015

SURVEY NO. 2133B

MADRON SURVEYING, INC. 301 SOUTH CANAL (575) 234-3341 CARLSBAD, NEW MEXICO