

UNITED STATES
DEPARTMENT OF THE INTERIOR
BUREAU OF LAND MANAGEMENT
New Mexico Oil Conservation Division
1625 N. French Drive
Albuquerque, NM 87102-2400

Expires: February 28, 1995

APPLICATION FOR PERMIT TO DRILL OR DEEPEN

1a. TYPE OF WORK
DRILL ☒ DEEPEN ☐

b. TYPE OF WELL
OIL WELL ☒ GAS WELL ☐ OTHER ☐ SINGLE ZONE ☐ MULTIPLE ZONE ☐

2. NAME OF OPERATOR
JUMBO AMERICAN PETROLEUM CORP. (432-682-6495) 226678

3. ADDRESS AND TELEPHONE NO.
550 WEST TEXAS SUITE 1303 MIDLAND, TEXAS 79701 (432-682-6495)

4. LOCATION OF WELL (Report location clearly and in accordance with any State requirements.)
At surface
1980' FSL & 1980' FWL SECTION 19 T26S-R35E LEA CO. NM ✓
At proposed prod. zone SAME

14. DISTANCE IN MILES AND DIRECTION FROM NEAREST TOWN OR POST OFFICE*
Approximately 15 miles SOUTH SOUTHWEST OF JAL NEW MEXICO

15. DISTANCE FROM PROPOSED* LOCATION TO NEAREST PROPERTY OR LEASE LINE, FT. (Also to nearest drig. unit line, if any) 660'

16. NO. OF ACRES IN LEASE 320

17. NO. OF ACRES ASSIGNED TO THIS WELL 40

18. DISTANCE FROM PROPOSED LOCATION* TO NEAREST WELL, DRILLING COMPLETED, OR APPLIED FOR, ON THIS LEASE, FT. 980'

19. PROPOSED DEPTH 9500'

20. ROTARY OR CABLE TOOLS ROTARY

21. ELEVATIONS (Show whether DF, RT, GR, etc.) 3184' GR

22. APPROX. DATE WORK WILL START* WHEN APPROVED

PROPOSED CASING AND CEMENTING PROGRAM				
SIZE OF HOLE	GRADE, SIZE OF CASING	WEIGHT PER FOOT	SETTING DEPTH	QUANTITY OF CEMENT
26"	CONDUCTOR	NA	40'	Redi-mix cement to surface
17 1/2"	H-40 13 3/8"	48#	1050'	1000 Sx. circulate to surface
11"	HCK-55, J-55 8 5/8"	32#	5300'	1150 Sx. " "
7 7/8"	L-80, J-55 5 1/2"	17#	9500'	725 Sx. Estimate TOC 4800'

1. Drill 26" hole to 40'. Set 40' of 20" conductor pipe and cement to surface with Redi-mix.
2. Drill 17 1/2" hole to 1050'. Run and set 1050' of 13 3/8" 48# H-40 ST&C casing. Cement with 800 Sx. of 35/65 Class "C" POZ + 2% CaCl, + 6% Gel, + 1/4# Flocele/Sx. Tail in with 200 Sx. of Class "C" cement + 2% CaCl, circulate cement to surface.
3. Drill 11" hole to 5300'. Run and set 5300' of 8 5/8" 32# HCK-55 & J-55 LT&C casing. Cement with 950 Sx. of 35/65 Class "C" POZ + 5% Salt, + 6% Gel, + 1/4# Flocele/Sx, tail in with 200 Sx. of Class "C" cement + 2% CaCl, circulate cement to surface.
4. Drill 7 7/8" hole to 9500'. Run and set 9500' of 5 1/2" 17# L-80 & J-55 LT&C casing. Cement with 525 Sx. of Class "C" Light cement + additives, tail in with 200 Sx. of Class "H" Premium Plus cement + additives. Estimate top of cement 4800' From Surface.

APPROVAL SUBJECT TO
GENERAL REQUIREMENTS
AND SPECIAL STIPULATIONS
ATTACHED

IN ABOVE SPACE DESCRIBE PROPOSED PROGRAM: If proposal is to deepen, give data on present productive zone and proposed new productive zone. If proposal is to drill or deepen directionally, give pertinent data on subsurface locations and measured and true vertical depths. Give blowout preventer program, if any.

24. SIGNED Joe T. Janice TITLE Agent DATE 09/18/05

(This space for Federal or State office use)

PERMIT NO. _____ APPROVAL DATE _____
Application approval does not warrant or certify that the applicant holds legal or equitable title to those rights in the subject lease which would entitle the applicant to conduct operations thereon.
CONDITIONS OF APPROVAL, IF ANY:

ACTING

APPROVED BY /S/ James Stovall TITLE FIELD MANAGER DATE NOV - 8 2005

*See Instructions On Reverse Side

APPROVAL FOR 1 YEAR

UNITED STATES
DEPARTMENT OF THE INTERIOR
BUREAU OF LAND MANAGEMENTFORM APPROVED
OMB No. 1004-0135
Expires November 30, 2000**SUNDRY NOTICES AND REPORTS ON WELLS**
*Do not use this form for proposals to drill or to re-enter an abandoned well. Use Form 3160-3 (APD) for such proposals.***SUBMIT IN TRIPLICATE - Other instructions on reverse side**

1. Type of Well

☒ Oil Well ☐ Gas Well ☐ Other

2. Name of Operator

JUMBO AMERICAN PETROLEUM CORP.

3a. Address 550 WEST TEXAS SUITE 1303
MIDLAND, TEXAS 797013b. Phone No. (include area code)
432-682-6495

4. Location of Well (Footage, Sec., T., R., M., or Survey Description)

190' FSL & 1980" FWL SECTION 19 T26S-R35E LEA CO. NM

5. Lease Serial No.

NM-93223

6. If Indian, Allottee or Tribe Name

7. If Unit or CA/Agreement, Name and/or No.

8. Well Name and No.

MADERA "19" FEDERAL # 3

9. API Well No.

30-025-37550

10. Field and Pool, or Exploratory Area

WILDCAT BRUSHY CANYON

11. County or Parish, State

LEA CO. NEW MEXICO

12. CHECK APPROPRIATE BOX(ES) TO INDICATE NATURE OF NOTICE, REPORT, OR OTHER DATA

TYPE OF SUBMISSION

TYPE OF ACTION

☒ Notice of Intent☐ Subsequent Report☐ Final Abandonment Notice☐ Acidize☐ Alter Casing☐ Casing Repair☐ Change Plans☐ Convert to Injection☐ Deepen☐ Fracture Treat☐ New Construction☐ Plug and Abandon☐ Plug Back☐ Production (Start/Resume)☐ Reclamation☐ Recomplete☐ Temporarily Abandon☐ Water Disposal☐ Water Shut-Off☐ Well Integrity☐ Other

CHANGE WELL #

13. Describe Proposed or Completed Operation (clearly state all pertinent details, including estimated starting date of any proposed work and approximate duration thereof. If the proposal is to deepen directionally or recompleat horizontally, give subsurface locations and measured and true vertical depths of all pertinent markers and zones. Attach the Bond under which the work will be performed or provide the Bond No. on file with BLM/BIA. Required subsequent reports shall be filed within 30 days following completion of the involved operations. If the operation results in a multiple completion or recompleat in a new interval, a Form 3160-4 shall be filed once testing has been completed. Final Abandonment Notices shall be filed only after all requirements, including reclamation, have been completed, and the operator has determined that the site is ready for final inspection.)

1. Jumbo American Petroleum Corp. request the number on the below listed well to be changed as shown.

Change from: MADERA "19" FEDERAL # 2-A

Change to: MADERA "19" FEDERAL # 3

2. This number change was requested by The Bureau of Land Management.

14. I hereby certify that the foregoing is true and correct
Name (Printed/Typed)

Joe T. Janica

Title Agent

Signature

Date 10/05/05

THIS SPACE FOR FEDERAL OR STATE OFFICE USE

Approved by

/S/ James Stovall

ACTING

Title

FIELD MANAGER

Date

NOV - 8 2005

Conditions of approval, if any, are attached. Approval of this notice does not warrant or certify that the applicant holds legal or equitable title to those rights in the subject lease which would entitle the applicant to conduct operations thereon.

Office

CARLSBAD FIELD OFFICE

DISTRICT I
1625 N. French Dr., Hobbs, NM 88240

DISTRICT II
P.O. Drawer DD, Artesia, NM 88211-0719

DISTRICT III
1000 Rio Brazos Rd., Aztec, NM 87410

DISTRICT IV
2040 South Pacheco, Santa Fe, NM 87505

State of New Mexico
Energy, Minerals & Natural Resources Department

Form C-102
Revised August 15, 2000
Submit to Appropriate District Office
State Lease - 4 Copies
Fee Lease - 3 Copies

OIL CONSERVATION DIVISION
2040 South Pacheco
Santa Fe, NM 87505

☐ AMENDED REPORT

WELL LOCATION AND ACREAGE DEDICATION PLAT

API Number <u>30-025-37550</u>	Pool Code	Pool Name WILDCAT-BRUSHY CANYON
Property Code <u>33613</u>	Property Name MADERA 19 FED	Well Number 2-A
OGRID No. 226678	Operator Name JUMBO AMERICAN PETROLEUM CORPORATION	Elevation 3184'

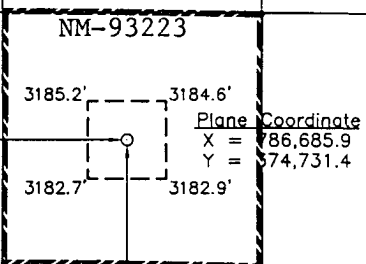
Surface Location

UL or lot No. K	Section 19	Township 26 S	Range 35 E	Lot Idn	Feet from the 1980	North/South line SOUTH	Feet from the 1980	East/West line WEST	County LEA
--------------------	---------------	------------------	---------------	---------	-----------------------	---------------------------	-----------------------	------------------------	---------------

Bottom Hole Location If Different From Surface

UL or lot No.	Section	Township	Range	Lot Idn	Feet from the	North/South line	Feet from the	East/West line	County
Dedicated Acres 40	Joint or Infill	Consolidation Code	Order No.						

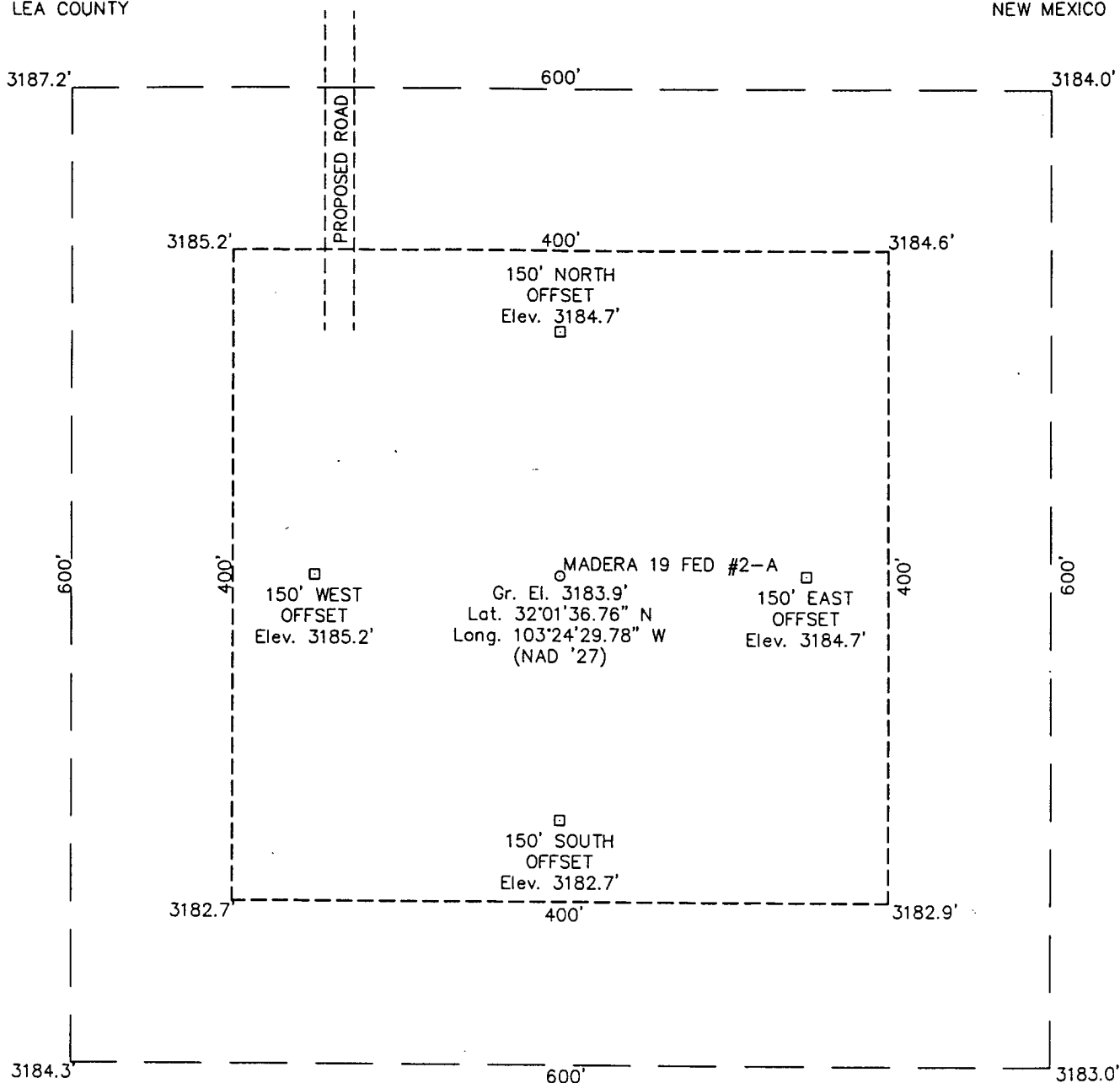
NO ALLOWABLE WILL BE ASSIGNED TO THIS COMPLETION UNTIL ALL INTERESTS HAVE BEEN CONSOLIDATED OR A NON-STANDARD UNIT HAS BEEN APPROVED BY THE DIVISION

				OPERATOR CERTIFICATION I hereby certify the the information contained herein is true and complete to the best of my knowledge and belief. <u>Basilom L. Mitchell</u> Signature <u>BASILOM L MITCHELL</u> Printed Name <u>AGENT</u> Title <u>9/09/05</u> Date	
				SURVEYOR CERTIFICATION I hereby certify that the well location shown on this plat was plotted from field notes of actual surveys made by me or under my upervision and that the same is true and orrect to the best of my belief. August 25, 2005 Date Surveyed Signature & Seal of Professional Surveyor <u>[Signature]</u> W.O. Num. 2005-0756 Certificate No. MACON McDONALD 12185	

SECTION 19, TOWNSHIP 26 SOUTH, RANGE 35 EAST, N.M.P.M.

LEA COUNTY

NEW MEXICO

DRIVING DIRECTIONS

FROM THE INTERSECTION OF STATE HIGHWAY 302 AND COUNTY ROAD 101 ABOUT 4 MILES WEST OF KERMIT, TX GO NORTH 7.4 MILES ON SAID COUNTY ROAD 101, TURN WEST THRU CATTLE GUARD 7 MILES ON CALICHE ROAD, TURN NORTHWEST 7.6 MILES ALONG PIPELINE, TURN NORTHEAST 0.4 MILE, TURN NORTH 1.5 MILES, TURN EAST 0.5 MILE TO TO WELL IN SECTION 30, TURN NORTH ABOUT 1.5 MILES TO A TEE, TURN NORTHEAST 0.2 MILE TO POINT WHERE A PROPOSED FLAGGED OUT ROAD BEGINS, TURN SOUTH ALONG SAID PROPOSED ROAD 620 FEET TO PROPOSED LOCATION.

JUMBO AMERICAN PETROLEUM CORPORATION**MADERA 19 FED #2-A**

Located 1980' FSL & 1980' FWL, Section 19
Township 26 South, Range 35 East, N.M.P.M.
Lea County, New Mexico

Drawn By: LVA	Date: August 31, 2005
Scale: 1"=100'	Field Book: 314 / 12-18
Revision Date:	Quadrangle: Andrews Place
W.O. No: 2005-0756	Dwg. No.: L-2005-0756-A

**WEST
COMPANY**
of Midland, Inc.

110 W. LOUISIANA, STE. 110
MIDLAND TEXAS, 79701
(432) 687-0865 - (432) 687-0868 FAX

L-2005-0756-A

This topographic map depicts the Madera 19 Federal Reserve area, showing proposed and existing access roads, trails, and various landmarks. The map is divided into sections by a grid, with section numbers 13, 17, 18, 19, 20, 24, 25, 29, and 30 visible. Key features include:

- Proposed Access Road:** A solid line labeled "599 L.F. OF NEW ACCESS ROAD CROSSING FEDERAL LAND" and "MADERA 19 FED #2-A".
- Existing Access Road:** A solid line labeled "EXISTING ACCESS ROAD".
- Trails:** Dashed lines labeled "JEEP TRAIL" and "TRAIL".
- Landmarks:** "Andrews Place", "Andrews South Trak", and "MADERA 19 FED #2-A" (marked with a square and circle symbol).
- Topographic Features:** Contour lines with elevations such as 3261, 3250, 3232, 3209, 3196, 3189, 3170, 3160, 3155, 3140, 3130, 3120, 3110, 3100, 3090, 3080, 3070, 3060, 3050, 3040, 3030, 3020, 3010, 3000, 2990, 2980, 2970, 2960, 2950, 2940, 2930, 2920, 2910, 2900, 2890, 2880, 2870, 2860, 2850, 2840, 2830, 2820, 2810, 2800, 2790, 2780, 2770, 2760, 2750, 2740, 2730, 2720, 2710, 2700, 2690, 2680, 2670, 2660, 2650, 2640, 2630, 2620, 2610, 2600, 2590, 2580, 2570, 2560, 2550, 2540, 2530, 2520, 2510, 2500, 2490, 2480, 2470, 2460, 2450, 2440, 2430, 2420, 2410, 2400, 2390, 2380, 2370, 2360, 2350, 2340, 2330, 2320, 2310, 2300, 2290, 2280, 2270, 2260, 2250, 2240, 2230, 2220, 2210, 2200, 2190, 2180, 2170, 2160, 2150, 2140, 2130, 2120, 2110, 2100, 2090, 2080, 2070, 2060, 2050, 2040, 2030, 2020, 2010, 2000, 1990, 1980, 1970, 1960, 1950, 1940, 1930, 1920, 1910, 1900, 1890, 1880, 1870, 1860, 1850, 1840, 1830, 1820, 1810, 1800, 1790, 1780, 1770, 1760, 1750, 1740, 1730, 1720, 1710, 1700, 1690, 1680, 1670, 1660, 1650, 1640, 1630, 1620, 1610, 1600, 1590, 1580, 1570, 1560, 1550, 1540, 1530, 1520, 1510, 1500, 1490, 1480, 1470, 1460, 1450, 1440, 1430, 1420, 1410, 1400, 1390, 1380, 1370, 1360, 1350, 1340, 1330, 1320, 1310, 1300, 1290, 1280, 1270, 1260, 1250, 1240, 1230, 1220, 1210, 1200, 1190, 1180, 1170, 1160, 1150, 1140, 1130, 1120, 1110, 1100, 1090, 1080, 1070, 1060, 1050, 1040, 1030, 1020, 1010, 1000, 990, 980, 970, 960, 950, 940, 930, 920, 910, 900, 890, 880, 870, 860, 850, 840, 830, 820, 810, 800, 790, 780, 770, 760, 750, 740, 730, 720, 710, 700, 690, 680, 670, 660, 650, 640, 630, 620, 610, 600, 590, 580, 570, 560, 550, 540, 530, 520, 510, 500, 490, 480, 470, 460, 450, 440, 430, 420, 410, 400, 390, 380, 370, 360, 350, 340, 330, 320, 310, 300, 290, 280, 270, 260, 250, 240, 230, 220, 210, 200, 190, 180, 170, 160, 150, 140, 130, 120, 110, 100, 90, 80, 70, 60, 50, 40, 30, 20, 10, 0.

CONTOUR INTERVAL:
ANDREWS PLACE - 10'

U.S.G.S. TOPOGRAPHIC MAP
ANDREWS PLACE, N.M.



**WEST
COMPANY**
of Midland, Inc.

110 W. LOUISIANA, STE. 110
MIDLAND TEXAS, 79701
(432) 687-0865 - (432) 687-0868 FAX

VICINITY MAP



SCALE: 1" = 4 MILES

SEC. 19 TWP. 26-S RGE. 35-E

SURVEY N.M.P.M.

COUNTY LEA

DESCRIPTION 1980' FSL & 1980' FWL

ELEVATION 3184'

OPERATOR JUMBO AMERICAN PETROLEUM CORPORATION

LEASE MADERA 19 FED



**WEST
COMPANY**
of Midland, Inc.

110 W. LOUISIANA, STE. 110
MIDLAND TEXAS, 79701
(432) 687-0865 - (432) 687-0868 FAX

APPLICATION TO DRILL

JUMBO AMERICAN PETROLEUM CORP.
 MADERA "19" FEDERAL # 2-A
 UNIT "K" SECTION 19
 T26S-R35E LEA CO. NM

In response to questions asked under Section II of Bulletin NTL-6 the following information on the above well is provided for your consideration.

1. Location: 1980' FSL & 1980' FWL SECTION 19 T26S-R35E LEA CO. NM.
2. Elevation above Sea Level: 3184' GR.
3. Geologic name of surface formation: Quaternary Aeolian Deposits.
4. Drilling tools and associated equipment: Conventional rotary drilling rig using drilling mud as a circulating medium for solids removal from hole.
5. Proposed drilling depth: 9500'
6. Estimated tops of geological markers:

Rustler Anhydrite	950'
Delaware Lime	5330'
Delaware Sd	5360'
Bone Spring	9470'
7. Possible mineral bearing formations:

Brushy Canyon	Oil
Bone Spring	Oil
8. Casing program:

Hole size	Interval	OD of casing	Weight	Thread	Collar	Grade
26"	0-40	20"	NA	NA	NA	Conductor
17½"	0-1050'	13 3/8"	48#	8-R	ST&C	H-40
11"	0-5300'	8 5/8"	32#	8-R	LT&C	HCK-55 J-55
7 7/8"	0-9500'	5½"	17#	8-R	LT&C	L-80 J-55

APPLICATION TO DRILL

JUMBO AMERICAN PETROLEUM CORP.
MADERA "19" FEDERAL # 2-A
UNIT "K" SECTION 19
T26S-R35E LEA CO. NM

9. CEMENTING & SETTING DEPTH:

20"	Conductor	Set 40' of 20" conductor and cement to surface with Redi- mix.
13 3/8"	Surface	Set 1050' of 13 3/8" 48# H-40 ST&C casing. Cement with 800 Sx. of 36/65 Class "C" POZ + 2% CaCl, + 6% Gel, + 1/2# Flocele/ Sx, tail in with 200 Sx. of Class "C" Cement + 2% CaCl. Circulate cement to surface.
8 5/8"	Intermediate	Set 5300' of 8 5/8" 32# HCK-55 & J-55 LT&C casing. Cement with 950 Sx. of 35/65 Class "C" POZ + 5% Salt + 6% Gel, + 1/2# Celco flakes/Sx. tail in with 200 Sx. of Class "C" cement + 2% CaCl, circulate cement to surface.
5 1/2"	Production	Set 9500' of 5 1/2" 17# L-80 & J-55 LT&C casing. Cement with 525 Sx. of Class "C" Light cement + additives, tail in with 200 Sx. of Class "H" + additives Est. top of cement 4800'.

10. PRESSURE CONTROL EQUIPMENT: Exhibit "E" shows a 1500 Series 5000 PSI working pressure B.O.P. consisting of an annular bag type preventor, middle blind rams and bottom pipe rams. The B.O.P. will be nipped up on the 13 3/8" casing and tested to API specifications. The B.O.P. will be operated at least once in each 24 hour period and the blind rams will be operated when drill pipe is out of hole on trips. Full opening stabbing valve and upper kelly cock will be utilized. Exhibit "E-1" shows a hydraulically operated closing unit and a 2" 5000 PSI choke manifold with dual adjustable chokes. No abnormal pressures or temperatures are expected.

11. PROPOSED MUD CIRCULATING SYSTEM:

DEPTH	MUD WT.	VISC.	FLUID LOSS	TYPE MUD SYSTEM
40-1050'	8.4-9.4	29-34	NC	Fresh water Spud Mud add paper to control seepage
1050-5300'	10.0-10.2	29-34	NC	Brine water add paper to control seepage and high viscosity sweeps to clean hole.
5300-9500'	8.4-8.8	28-32	NC*	Fresh water and cut brine use high viscosity sweeps to clean hole.

* 8150-9500' If necessary to evaluate Brushy Canyon Zones Mud up with a Polymer system to control water loss and Gel to control viscosity.

Sufficient mud materials will be kept on location at all times in order to combat lost circulation, or unexpected kicks. In order to run DST's, open hole logs, and casing viscosity and/or water loss may have to be adjusted to meet these needs.

APPLICATION TO DRILL

JUMBO AMERICAN PETROLEUM CORP.
MADERA "19" FEDERAL # 2-A
UNIT "K" SECTION 19
T26S-R35E LEA CO. NM

12. LOGGING, CORING & TESTING:

- A. Open hole logs: Dual Laterolog, Compensated Neutron, Gamma Ray, Caliper from 5300' to surface. Dual Induction, MSFL, CNL, FDC, Gamma Ray, Caliper from TD Back to 8 5/8" casing shoe.
- B. Rig up mud logger on hole at 4800'±.
- C. No DST's or cores are planned at this time.

13. POTENTIAL HAZARDS:

No abnormal pressures or temperatures are expected. There is no known presence of H²S in this area. If H²S is encountered the operator will comply with the provisions of Onshore Oil and Gas Order No. 6. No lost circulation is expected to occur. All personnel will be familiar with all aspects of safe operation of equipment being used to drill this well. Estimated BHP 5000 PSI, and Estimated BHT 175°.

14. ANTICIPATED STARTING DATE AND DURATION OF OPERATION:

Road and location construction will begin after the BLM has approved the APD. Anticipated spud date will be as soon after BLM approval and as soon as a rig will be available. Move in operation and drilling is expected to take 26 days. If production casing is run then an additional 30 days will be needed to complete well and construct surface facilities and/or lay flowlines in order to place well on production.

15. OTHER FACETS OF OPERATIONS:

After running casing, cased hole Gamma Ray, Neutron Collar logs will be run from TD back to all possible productive zones. The Brushy Canyon formation will be perforated and stimulated in order to establish production. The well will be swab tested and potentialized as an Oil well.

HYDROGEN SULFIDE DRILLING OPERATIONS PLAN

1. All Company and Contract personnel admitted on location must be trained by a qualified H₂S safety instructor to the following:
 - A. Characteristics of H₂S
 - B. Physical effects and hazards
 - C. Proper use of safety equipment and life support systems.
 - D. Principle and operation of H₂S detectors, warning system and briefing areas.
 - E. Evacuation procedure, routes and first aid.
 - F. Proper use of 30 minute pressure demand air pack.
2. H₂S Detection and Alarm Systems
 - A. H₂S detectors and audio alarm system to be located at bell nipple, end of bloop line (mud pit) and on derrick floor or doghouse.
3. Windsock and/or wind streamers
 - A. Windsock at mudpit area should be high enough to be visible.
 - B. Windsock at briefing area should be high enough to be visible.
 - C. There should be a windsock at entrance to location.
4. Condition Flags and Signs
 - A. Warning sign on access road to location.
 - B. Flags to be displayed on sign at entrance to location. Green flag, normal safe condition. Yellow flag indicates potential pressure and danger. Red flag, danger, H₂S present in dangerous concentration. Only emergency personnel admitted to location.
5. Well control equipment
 - A. See exhibit "E"
6. Communication
 - A. While working under masks chalkboards will be used for communication.
 - B. Hand signals will be used where chalk board is inappropriate.
 - C. Two way radio will be used to communicate off location in case of emergency help is required. In most cases cellular telephoned will be available at most drilling foreman's trailer or living quarters.
7. Drillstem Testing
 - A. Exhausts will be watered.
 - B. Flare line will be equipped with an electric ignitor or a propane pilot light in case gas reaches the surface.
 - C. If location is near any dwelling a closed D.S.T. will be performed.

HYDROGEN SULFIDE DRILLING OPERATIONS PLAN

8. Drilling contractor supervisor will be required to be familiar with the effects H₂S has on tubular goods and other mechanical equipment.
9. If H₂S is encountered, mud system will be altered if necessary to maintain control of formation. A mud gas separator will be brought into service along with H₂S scavengers if necessary.

SURFACE USE PLAN

JUMBO AMERICAN PETROLEUM CORP.
MADERA "19" FEDERAL # 2-A
UNIT "K" SECTION 19
T26S-R35E LEA CO. NM

1. EXISTING AND PROPOSED ROADS: Area maps: Exhibit "B" is a reproduction of a County General Hi-way map showing access roads to the location. Exhibit "C" is a reproduction of a USGS Topographic map showing existing roads in close proximity to the location and the proposed access roads. All existing roads will be maintained in a condition equal to or better than their current conditions. All new roads will be constructed to BLM specifications.

A. Exhibit "A" shows the location of the proposed well site as staked.

B. From Jal New Mexico take 3rd street (turns into SR-205) go 8.6± miles to Beckham Ranch road, turn Right (West) go 2.3± miles to ranch house, continue West for 3.± miles, turn Right go .5 miles, turn Left go 3.4 miles to locked gate, continue .3 miles turn Left go 600' to location.

C. Exhibit "C" shows proposed roads and routes of flowlines that will be used to produce this lease.

2. PLANNED ACCESS ROADS: 600' of new road will be constructed.

A. The access road will be crowned and ditched to a 12' wide traveled surface with a 40' Right-Of-Way.

B. Gradient on all roads will be less than 5% if possible.

C. Turn-outs will be constructed where necessary.

D. If needed roads will be surfaced to the BLM requirements with material obtained from a local source.

E. Center line of new road will be flagged.

F. The new road will be constructed to utilize low water crossings where drainage currently exists, and culverts will be installed where necessary.

3. EXHIBIT "A-1" SHOWS THE BELOW LISTED TYPE WELLS WITHIN A 1 MILE RADIUS:

A. Water wells - One approximately .7 Miles Northeast of location.

B. Disposal wells - None known

C. Drilling wells - None known

D. Producing wells - As shown on Exhibit "A-1"

E. Abandoned wells - As shown on Exhibit "A-1"

SURFACE USE PLAN

JUMBO AMERICAN PETROLEUM CORP.
MADERA "19" FEDERAL # 2-A
UNIT "K" SECTION 19
T26S-R35E LEA CO. NM

4. If on completion this well is a producer the operator will lay pipelines and construct powerlines along existing road R-O-W's or other existing R-O-W's. Exhibit "C" shows proposed routes of roads, flowlines and powerlines.

5. LOCATION AND TYPE OF WATER SUPPLY:

Water will be purchased locally from a commercial source and trucked over the access roads or piped to location in flexible lines laid on top of the ground.

6. SOURCE OF CONSTRUCTION MATERIAL:

If possible construction material will be obtained from the excavation of drill site, if additional material is needed it will be obtained from a local source and transported over the access roads as shown on Exhibit "C".

7. METHODS OF HANDLING WASTE MATERIAL:

- A. Drill cuttings will be disposed of in the reserve pits.
- B. All trash, junk and other waste material will be contained in trash cages or trash bins to prevent scattering. When the job is completed all contents will be removed and disposed of in a approved sanitary land fill.
- C. Salts remaining after completion of well will be picked up by the supplier, including broken sacks.
- D. Waste water from living quarters will be drained into holes with a manium of 10'. These holes will be covered during drilling and will be back filled when the well is completed. A Porto-John will be provided for the rig crews. This equipment will be properly maintained during the drilling and completion operations and will be removed when all operations are complete.
- E. Remaining drilling fluids will be allowed to evaporate in the reserve pits until the pits are dry enough to be broken out for furthed drying. If the drilling fluids do not evaporate in a reasonable time they will be hauled off by transports to a state approve disposal site. Later pips will be broken out to speed drying. Water produced during completion will be put in reserve pits. Oil and condensate produced will be put in storage tanks and sold.

8. ANCILLARY FACILITIES:

- A. No camps or air strips will be constructed on location.

SURFACE USE PLAN

JUMBO AMERICAN PETROLEUM CORP.
MADERA "19" FEDERAL # 2-A
UNIT "K" SECTION 19
T26S-R35E LEA CO. NM

9. WELL SITE LAYOUT:

- A. Exhibit "D" shows the proposed well site layout.
- B. This Exhibit shows the location of reserve pit, sump pits, and living facilities.
- C. Mud pits in the active circulating system will be steel pits and the reserve pits will be unlined unless subsurface conditions encountered during pit construction indicate that a plastic liner is required to contain lateral migration.
- D. If needed the reserve pits will be lined with polyethelene. The pit liner will be no less than 6 mils thick and the liner will be extended at least 3 feet over the top of the dikes and secured in place to keep edge of liner in place.
- E. The reserve pit will be fenced on three sides and fenced with four strands of barbed wire during drilling and completion phases. The 4th side will be fenced after drilling operations are complete and the drilling rig has moved out. If the well is a producer the mud pits will remain fenced in until the mud has dried up enough to break out the pits and reclaimed according to BLM requirements.

10. PLANS FOR RESTORATION OF SURFACE:

Rehabilitation of the location and reserve pits will be allowed to dry properly, fluids may be moved and disposed of in accordance with article 7-E as previously noted. The pit area will then be leveled and contoured to conform to the original and surrounding area. Drainage systems, if any will be reshaped to the original configuration with provisions made to alleviate future erosion. In case of the well completed as a producer the drilling pad will be necessary to construct production facilities. After the area has been shaped and contoured top soil from the spoil pile will be placed over the disturbed area to the extent possible so that revegetation procedures can be accomplished to comply with the BLM specifications.

If the well is a dry hole the pad and road area will be contoured to match the existing terrain. Top soil will be spread to the extent possible and revegetation will be carried out according to the BLM specifications.

Should the well be a producer the previously noted procedures will apply to those areas which are not required for production facilities.

SURFACE USE PLAN

JUMBO AMERICAN PETROLEUM CORP.
MADERA "19" FEDERAL # 2-A
UNIT "K" SECTION 19
T26S-R35E LEA CO. NM

11. OTHER INFORMATION:

- A. Low relief topography in a deep aeolian sand field, soils consists of tan/brown silty sands, and small caliche fragments. The vegetation consists of mesquite, cholla, yuccaelata, catclaw acacia, Christmas cactus and native grasses.
- B. The surface and minerals are owned by The U.S. Department of Interior and is administered by The Bureau of Land Management. The surface is used for grazing of livestock and the production of oil and gas.
- C. An archaeological survey will be conducted on the location and access roads and will be filed in the Carlsbad Field Office of The Bureau of Land Management.
- D. There are no dwellings located within 2 miles of this location.

12. OPERATORS REPRESENTATIVE:

Before Construction:

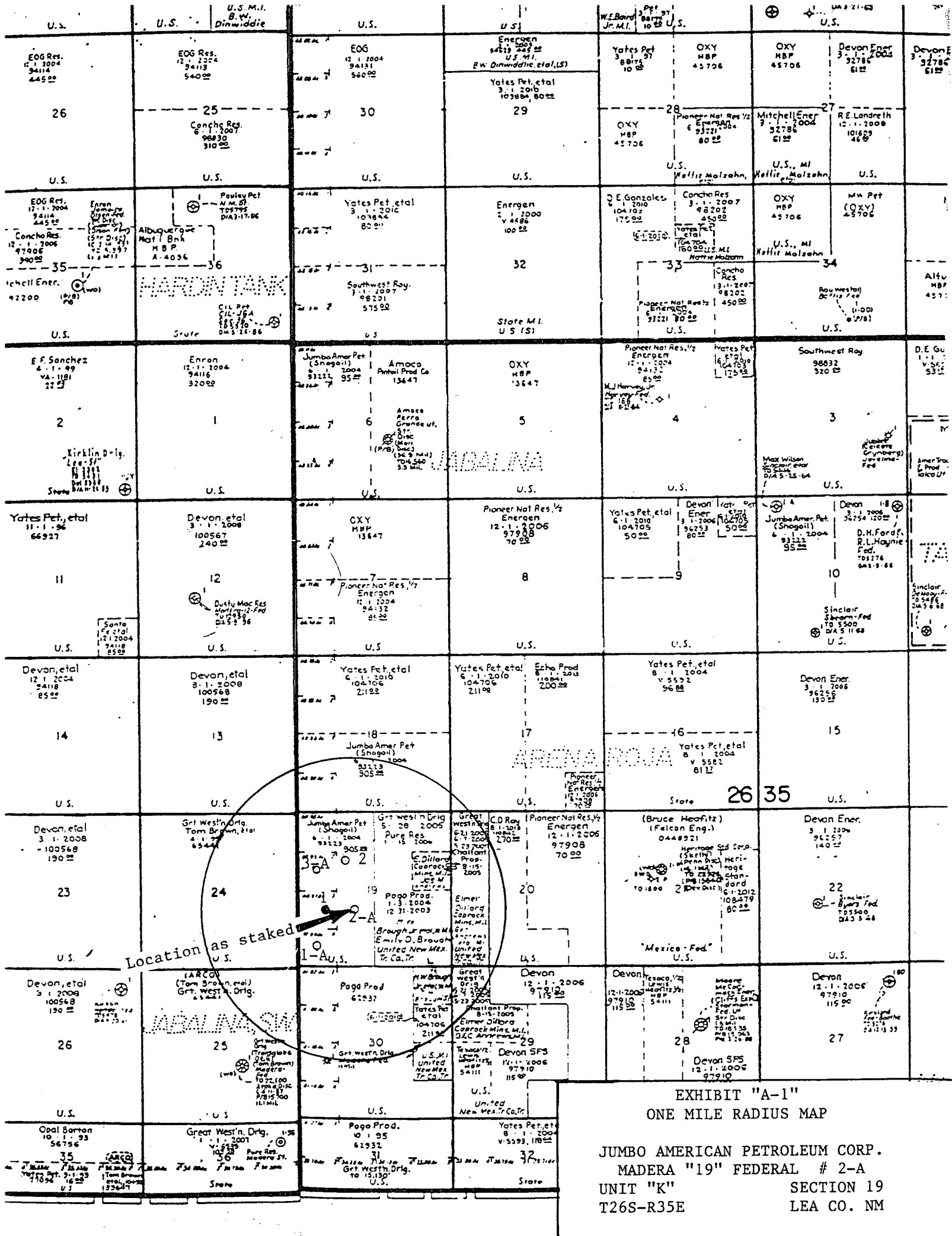
TIERRA EXPLORATION, INC.
P.O. BOX 2188
HOBBS, NEW MEXICO 88241
JOE T. JANICA
OFFICE PH. 505-391-8503
CELL PH. 505-390-1598

During and After Construction:

JUMBO AMERICAN PETROLEUM CORP.
550 WEST TEXAS SUITE 1303
MIDLAND, TEXAS 79701
BASCOM L. MITCHELL
PH. 432-682-6495
SIERRA ENGINEERING
DAN DODD
PH. 432-683-8000

13. CERTIFICATION: I hereby certify that I or persons under my direct supervision have inspected the proposed drill site and access route; that I am familiar with the conditions which currently exist, that the statements made in this plan are to the best of my knowledge, are true and correct, and that the work associated with the operations proposed herein will be performed by JUMBO AMERICAN PETROLEUM CORP., its contractors/subcontractors is in the conformity with this plan and the terms and conditions under which it is approved. This statement is subject to the provision of U.S.C. 1001 for filing of a false report.

NAME : Joe T Janica
DATE : 09/18/05
TITLE : Agent



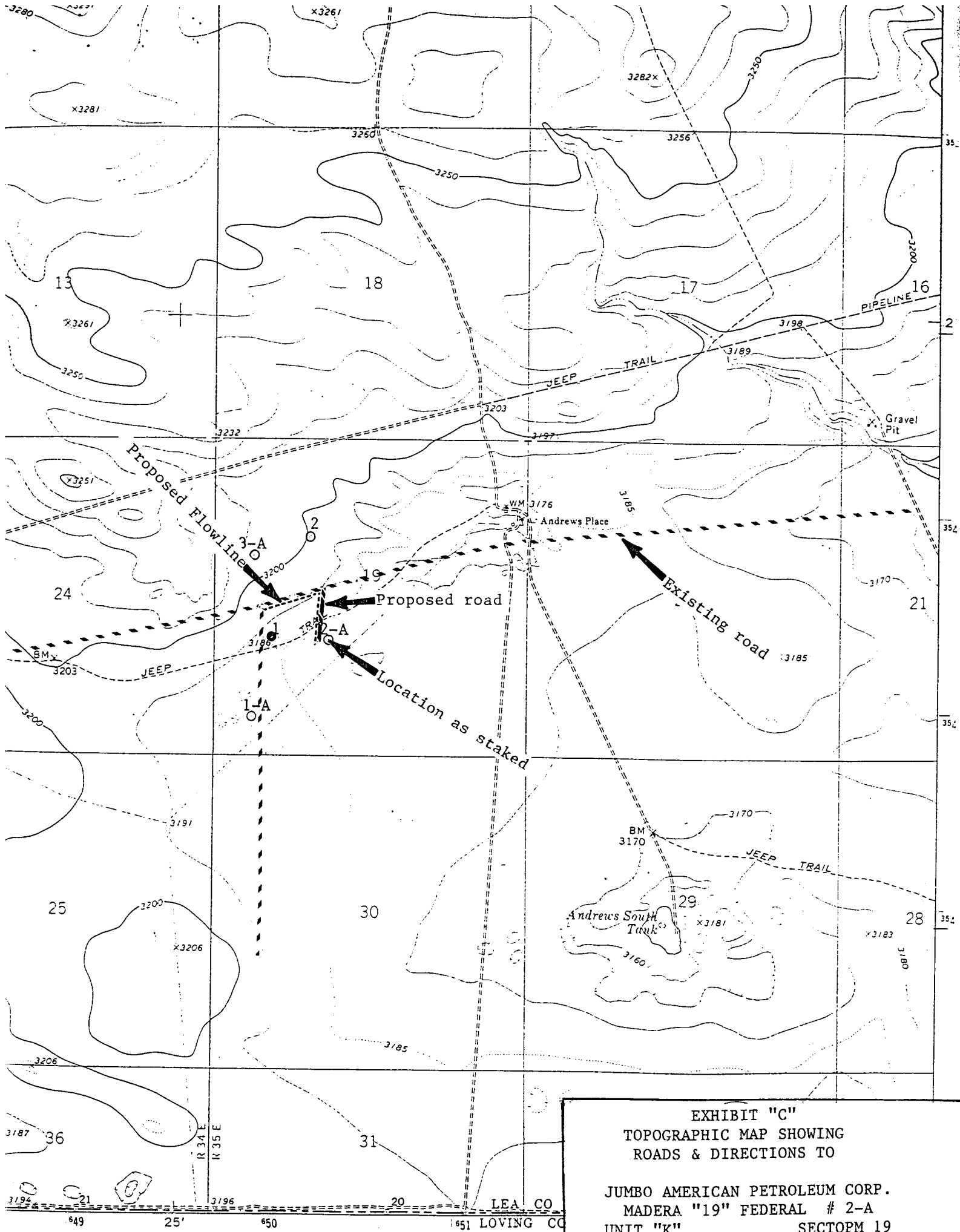
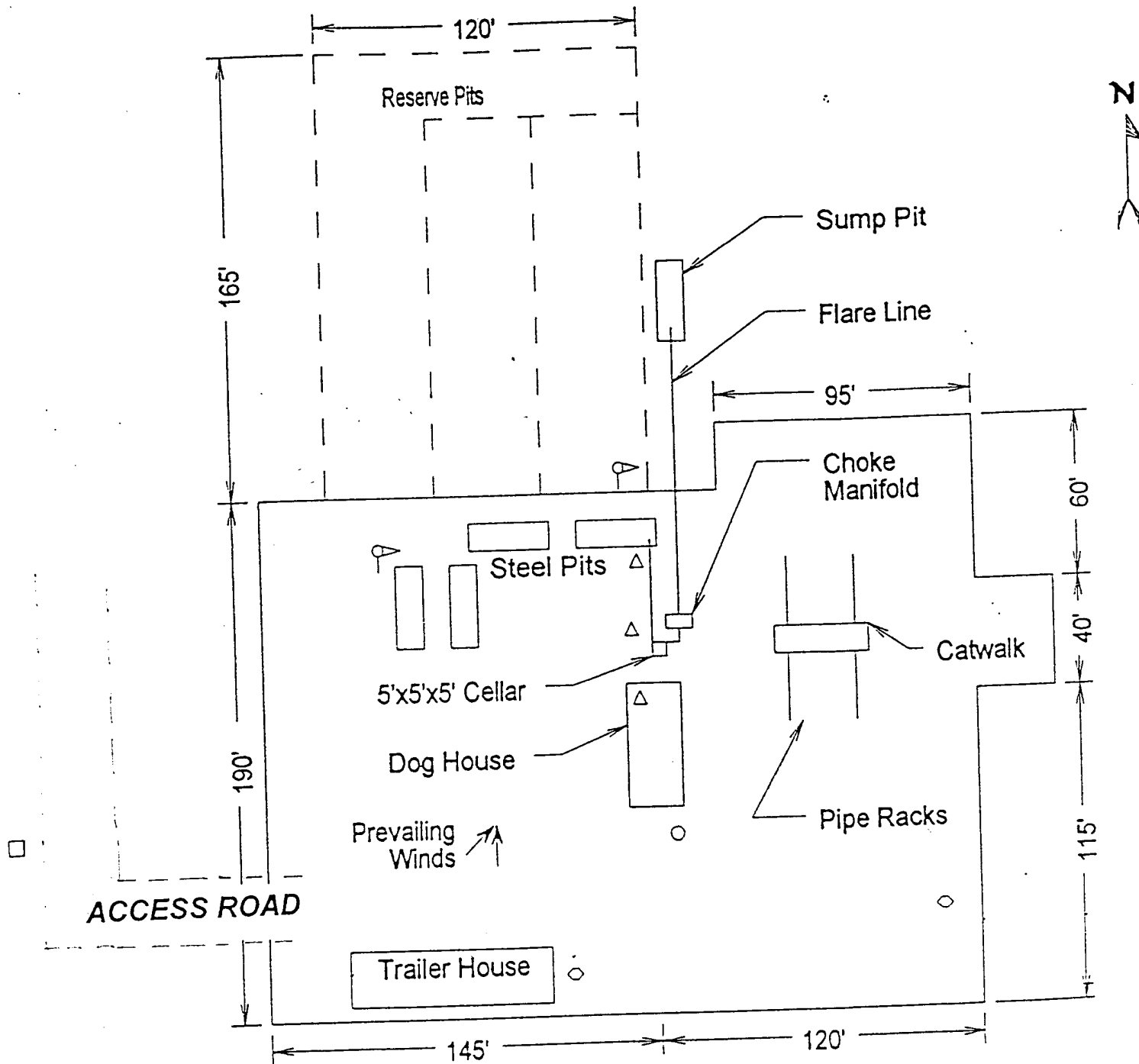


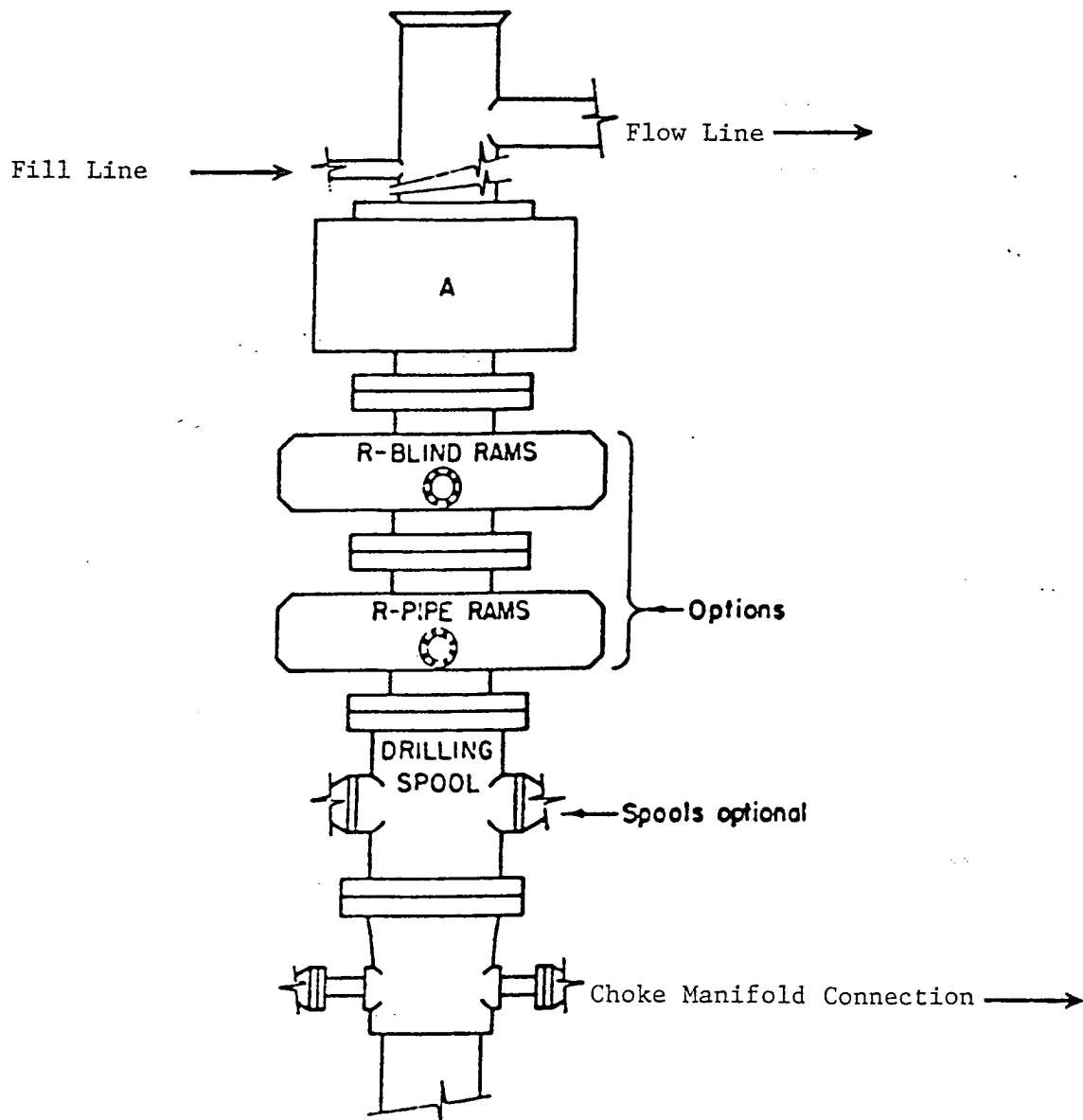
EXHIBIT "C"
 TOPOGRAPHIC MAP SHOWING
 ROADS & DIRECTIONS TO
 JUMBO AMERICAN PETROLEUM CORP.
 MADERA "19" FEDERAL # 2-A
 UNIT "K" SECTION 19
 T26S-R35E LEA CO. NM



- Wind Direction Indicators
(wind sock or streamers)
- △ H2S Monitors
(alarms at bell nipple and shale shaker)
- Briefing Areas
- Remote BOP Closing Unit
- Sign and Condition Flags

EXHIBIT "D"
RIG LAY OUT PLAT

JUMBO AMERICAN PETROLEUM CORP.
MADERA "19" FEDERAL # 2-A
UNIT "K" SECTION 19
T26S-R35E LEA CO. NM



ARRANGEMENT SRRA

1500 Series
5000 PSI WP

EXHIBIT "E"
SKETCH OF B.O.P. TO BE USED ON
JUMBO AMERICAN PETROLEUM CORP.
MADERA "19" FEDERAL # 2-A
UNIT "K" SECTION 19
T26S-R35E LEA CO. NM

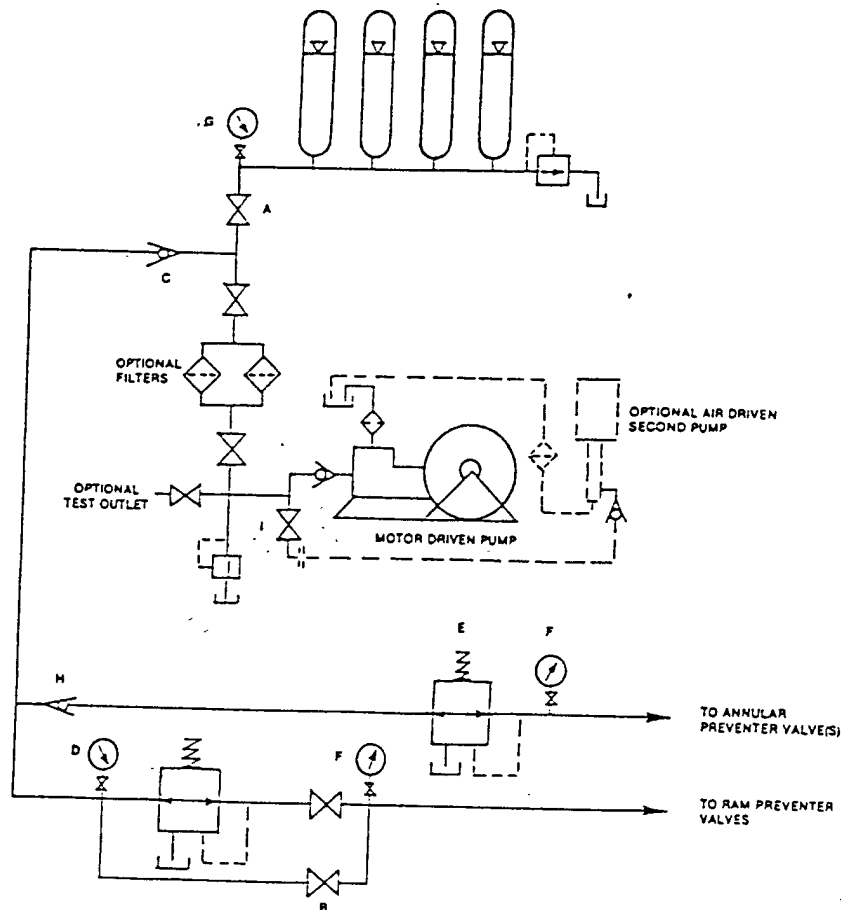


FIGURE K6-1. The schematic sketch of an accumulator system shows required and optional components.

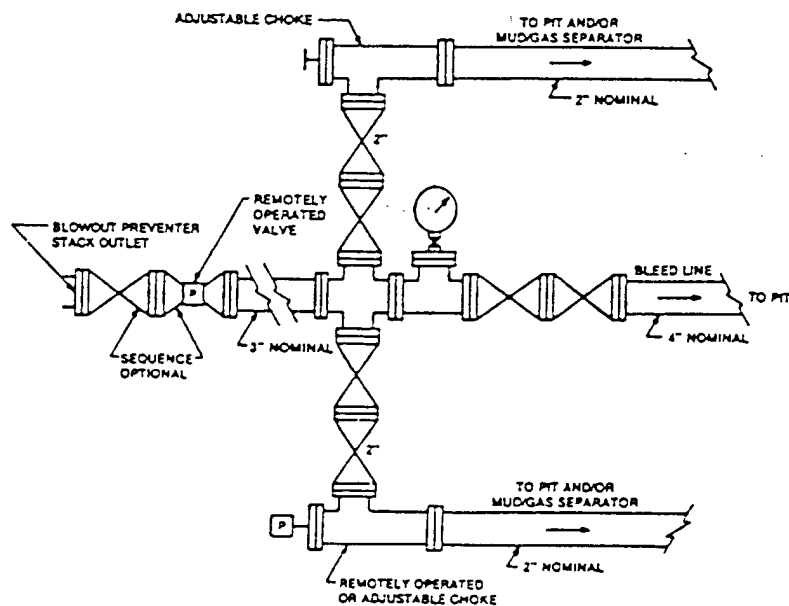


FIGURE K4-2. Typical choke manifold assembly for 5M rated working pressure service — surface installation.

EXHIBIT "E-1"
CHOKE MANIFOLD & CLOSING UNIT

JUMBO AMERICAN PETROLEUM CORP.
MADERA "19" FEDERAL # 2-A
UNIT "K" SECTION 19
T26S-R35E LEA CO. NM

SPECIAL DRILLING STIPULATIONS

THE FOLLOWING DATA IS REQUIRED ON THE WELL SIGN

Operator's Name Jumbo American Petroleum Corp. Well Name & No. Madera 19 Federal #2-A 3
Location 1980 F S L & 1980 F W L Sec. 19, T. 26 S, R. 35 E. per SW dated 10/5/05
Lease No. NM-93223 County Lea State New Mexico

The Special stipulations check marked below are applicable to the above described well and approval of this application to drill is conditioned upon compliance with such stipulations in addition to the General Requirements. The permittee should be familiar with the General Requirements, a copy of which is available from a Bureau of Land Management office. EACH PERMITTEE HAS THE RIGHT OF ADMINISTRATIVE APPEAL TO THESE STIPULATIONS PURSUANT TO TITLE 43 CRF 3165.3 AND 3165.4.

This permit is valid for a period of one year from the date of approval or until lease expiration or termination whichever is shorter.

I. SPECIAL ENVIRONMENT REQUIREMENTS

- (X) Lesser Prairie Chicken (stips attached) () Flood plain (stips attached)
() San Simon Swale (stips attached) () Other

II. ON LEASE - SURFACE REQUIREMENTS PRIOR TO DRILLING

(X) The BLM will monitor construction of this drill site. Notify the (X) Carlsbad Field Office at (505) 234-5972 () Hobbs Office (505) 393-3612, at least 3 working days prior to commencing construction.

(X) Roads and the drill pad for this well must be surfaced with 6 inches of compacted caliche.

() All topsoil and vegetation encountered during the construction of the drill site area will be stockpiled and made available for resurfacing of the disturbed area after completion of the drilling operation. Topsoil on the subject location is approximately _____ inches in depth. Approximately _____ cubic yards of topsoil material will be stockpiled for reclamation.

() Other.

III. WELL COMPLETION REQUIREMENTS

() A Communitization Agreement covering the acreage dedicated to the well must be filed for approval with the BLM. The effective date of the agreement must be prior to any sales.

(X) Surface Restoration: If the well is a producer, the reserve pit(s) will be backfilled when dry, and cut-and-fill slopes will be reduced to a slope of 3:1 or less. All areas of the pad not necessary for production must be re-contoured to resemble the original contours of the surrounding terrain, and topsoil must be re-distributed and re-seeded with a drill equipped with a depth indicator (set at depth of 1/2 inch) with the following seed mixture, in pounds of Pure Live Seed (PLS), per acre.

- | | |
|---|---|
| () A. Seed Mixture 1 (Loamy Sites) | (X) B. Seed Mixture 2 (Sandy Sites) |
| Side Oats Grama (<i>Bouteloua curtipendula</i>) 5.0 | Sand Dropseed (<i>Sporobolus crptandrus</i>) 1.0 |
| Sand Dropseed (<i>Sporobolus cryptandrus</i>) 1.0 | Sand Lovegrass (<i>Eragrostis trichodes</i>) 1.0 |
| | Plains Bristlegrass (<i>Setaria magrostachya</i>) 2.0 |
| () C. Seed Mixture 3 (Shallow Sites) | () D. Seed Mixture 4 (Gypsum Sites) |
| Side oats Grama (<i>Boute curtipendula</i>) 1.0 | Alkali Sacaton (<i>Sporobollud airoides</i>) 1.0 |
| | Four-Wing Saltbush (<i>Atriplex canescens</i>) 5.0 |

() OTHER SEE ATTACHED SEED MIXTURE

Seeding should be done either late in the fall (September 15 - November 15, before freeze up, or early as possible the following spring to take advantage of available ground moisture.

() Other.

SPECIAL DRILLING STIPULATIONS

THE FOLLOWING DATA IS REQUIRED ON THE WELL SIGN

Operator's Name Jumbo American Petroleum Corp. Well Name & No. Madera 19 Federal #1-A
Location 660 F S L & 660 F W L Sec. 19, T. 26 S, R 35 E.
Lease No. NM-93223 County Lea State New Mexico

The Special stipulations check marked below are applicable to the above described well and approval of this application to drill is conditioned upon compliance with such stipulations in addition to the General Requirements. The permittee should be familiar with the General Requirements, a copy of which is available from a Bureau of Land Management office. EACH PERMITTEE HAS THE RIGHT OF ADMINISTRATIVE APPEAL TO THESE STIPULATIONS PURSUANT TO TITLE 43 CRF 3165.3 AND 3165.4.

This permit is valid for a period of one year from the date of approval or until lease expiration or termination whichever is shorter.

I. SPECIAL ENVIRONMENT REQUIREMENTS

- (X) Lesser Prairie Chicken (stips attached) () Flood plain (stips attached)
() San Simon Swale (stips attached) () Other

II. ON LEASE - SURFACE REQUIREMENTS PRIOR TO DRILLING

(X) The BLM will monitor construction of this drill site. Notify the (X) Carlsbad Field Office at (505) 234-5972 () Hobbs Office (505) 393-3612, at least 3 working days prior to commencing construction.

(X) Roads and the drill pad for this well must be surfaced with 6 inches of compacted caliche.

() All topsoil and vegetation encountered during the construction of the drill site area will be stockpiled and made available for resurfacing of the disturbed area after completion of the drilling operation. Topsoil on the subject location is approximately _____ inches in depth. Approximately _____ cubic yards of topsoil material will be stockpiled for reclamation.

() Other.

III. WELL COMPLETION REQUIREMENTS

() A Communitization Agreement covering the acreage dedicated to the well must be filed for approval with the BLM. The effective date of the agreement must be prior to any sales.

(X) Surface Restoration: If the well is a producer, the reserve pit(s) will be backfilled when dry, and cut-and-fill slopes will be reduced to a slope of 3:1 or less. All areas of the pad not necessary for production must be re-contoured to resemble the original contours of the surrounding terrain, and topsoil must be re-distributed and re-seeded with a drill equipped with a depth indicator (set at depth of 1/2 inch) with the following seed mixture, in pounds of Pure Live Seed (PLS), per acre.

() A. Seed Mixture 1 (Loamy Sites)
Side Oats Grama (*Bouteloua curtipendula*) 5.0
Sand Dropseed (*Sporobolus cryptandrus*) 1.0

(X) B. Seed Mixture 2 (Sandy Sites)
Sand Dropseed (*Sporobolus cryptandrus*) 1.0
Sand Lovegrass (*Eragrostis trichodes*) 1.0
Plains Bristlegrass (*Setaria magrostachya*) 2.0

() C. Seed Mixture 3 (Shallow Sites)
Side oats Grama (*Boute curtipendula*) 1.0

() D. Seed Mixture 4 (Gypsum Sites)
Alkali Sacaton (*Sporobollud airoides*) 1.0
Four-Wing Saltbush (*Atriplex canescens*) 5.0

() OTHER SEE ATTACHED SEED MIXTURE

Seeding should be done either late in the fall (September 15 - November 15, before freeze up, or early as possible the following spring to take advantage of available ground moisture.

() Other.

PRAIRIE CHICKENS

No surface use is allowed during the following time periods; unless otherwise specified, this stipulation does not apply to operation and maintenance of production facilities.

On the lands described below: All of Section 19 T. 26 S., R. 35 E.

For the purpose of: Protecting Prairie Chickens:

Drilling for oil and gas, and 3-D geophysical exploration operations will not be allowed in Lesser Prairie Chicken Habitat during the period of March 15 through June 15, each year. During that period, other activities that produce noise or involve human activity, such as the maintenance of oil and gas facilities, geophysical exploration other than 3-D operations, and pipeline, road, and well pad construction, will be allowed except between 3:00 a.m. and 9:00 a.m. The 3:00 a.m. and 9:00 a.m. restriction will not apply to normal, around-the-clock operations, such as venting, flaring, or pumping, which do not require a human presence during the period. Additionally, no new drilling will be allowed within up to 200 meters of leks known at the time of permitting. Normal vehicle use on existing roads will not be restricted. Exhaust noise from pump jack engines must be muffled or otherwise controlled so as not to exceed 75 db measured at 30 feet from the source of the noise.

Bureau of Land Management
Carlsbad Field Office

SENM-S-22
December 1997

CONDITIONS OF APPROVAL - DRILLING

Operator's Name: Jumbo American Petroleum Corporation

Well Name & No: Madero "19" Federal No ~~02~~ 3 *Per SN dated 10/5/05*

Location: Surface: 1980' FSL & 1980' FWL, Sec. 19, T. 26 S. R. 35 E.

Lease: NMNM 93223

Lea County, New Mexico

.....

I. DRILLING OPERATIONS REQUIREMENTS:

1. The Bureau of Land Management (BLM) is to be notified at the Roswell Field Office, 2909 West Second St., Roswell, NM 88201, (505) 627-0272 for wells in Chaves and Roosevelt Counties; the Carlsbad Field Office, 620 East Greene St., Carlsbad, NM 88220, (505) 361-2822 for wells in Eddy County; and the Hobbs Field Station, 414 West Taylor, Hobbs NM 88240, (505) 393-3612 for wells in Lea County, in sufficient time for a representative to witness:

A. Spudding

B. Cementing casing: 13 3/4 inch; 8 5/8 inch; 5 1/2 inch.

C. BOP Tests

2. A Hydrogen Sulfide (H₂S) Drilling Plan is not required. This wellbore will not reach formations listed as H₂S production in this region.

3. Unless the production casing has been run and cemented or the well has been properly plugged, the drilling rig shall not be removed from over the hole without prior approval.

4. Submit a Sundry Notice (Form 3160-5, one original and five copies) for each casing string, describing the casing and cementing operations. Include pertinent information such as; spud date, hole size, casing (size, weight, grade and thread type), cement (type, quantity and top), water zones and problems or hazards encountered. The Sundry shall be submitted within 15 days of completion of each casing string. The reports may be combined into the same Sundry if they fall within the same 15 day time frame.

5. The API No. assigned to the well by NMOCD shall be included on the subsequent report of setting the first casing string.

II. CASING:

1. The 13 3/4 inch shall be set at 1050 Feet with cement circulated to the surface. If cement does not circulate to the surface the appropriate BLM office shall be notified and a temperature survey or cement bond log shall be run to verify the top of the cement. Remedial cementing shall be completed prior to drilling out that string.

2. The minimum required fill of cement behind the 8 5/8 inch Intermediate casing is to circulate to surface.

3. The minimum required fill of cement behind the 5 1/2 inch Production casing is to tie back into the 8 5/8 shoe by at least 200 feet.

III. PRESSURE CONTROL:

1. All BOP systems and related equipment shall comply with well control requirements as described in Onshore Oil and Gas Order No. 2. The BOP and related equipment shall be installed and operational before drilling below the 13 3/4 inch casing shoe and shall be tested as described in Onshore Order No. 2. Any equipment failing to test satisfactorily shall be repaired or replaced.

2. Minimum working pressure of the blowout preventer and related equipment (BOPE) shall be 2 M psi.

III. Pressure Control (continued):

3. The appropriate BLM office shall be notified in sufficient time for a representative to witness the test.

- The test shall be done by an independent service company
- The results of the test shall be reported to the appropriate BLM office.
- Testing fluid must be water or an appropriate clear liquid suitable for sub-freezing temperatures.
- Use of drilling mud for testing is not permitted since it can mask small leaks.
- Testing must be done in safe workman-like manner. Hard line connections shall be required.
- Both low pressure and high pressure testing of BOPE is required.

Ggourley 9/23/05

BLM Serial Number: NM-93223

Company Reference: Jumbo American Petroleum Corp.

Well No. & Name: Madera 19 Federal #2A 3
PERSON dated 10/5/05

STANDARD STIPULATIONS FOR PERMANENT RESOURCE ROADS
CARLSBAD FIELD OFFICE

A copy of the grant and attachments, including stipulations and map, will be on location during construction. BLM personnel may request to view a copy of your permit during construction to ensure compliance with all stipulations.

The holder/grantee/permittee shall hereafter be identified as the holder in these stipulations. The Authorized Officer is the person who approves the Application for Permit to Drill (APD) and/or Right-of-Way (ROW).

GENERAL REQUIREMENTS

A. The holder shall indemnify the United States against any liability for damage to life or property arising from the occupancy or use of public lands under this grant.

B. The holder shall comply with all applicable Federal laws and regulations existing or hereafter enacted or promulgated. In any event, the holder shall comply with the Toxic Substances Control Act of 1976, as amended (15 U.S.C. 2601, *et. seq.*) with regard to any toxic substances that are used, generated by or stored on the right-of-way or on facilities authorized by this grant. (See 40 CFR, Part 702-799 and especially, provisions on polychlorinated biphenyls, 40 CFR 761.1-761.193.) Additionally, any release of toxic substances (leaks, spills, etc.) in excess of the reportable quantity established by 40 CFR, Part 117 shall be reported as required by the Comprehensive Environmental Response, Compensation and Liability Act, Section 102b. A copy of any report required or requested by any Federal agency or State government as a result of a reportable release or spill of any toxic substances shall be furnished to the Authorized Officer concurrent with the filing of the reports to the involved Federal agency or State government.

C. The holder agrees to indemnify the United States against any liability arising from the release of any hazardous substance or hazardous waste (as these terms are defined in the Comprehensive Environmental Response, Compensation and Liability Act of 1980, 42 U.S.C. 9601, *et. seq.* or the Resource Conservation and Recovery Act, 42 U.S.C. 6901, *et. seq.*) on the right-of-way (unless the release or threatened release is wholly unrelated to the right-of-way holder's activity on the right-of-way). This agreement applies without regard to whether a release is caused by the holder, its agent, or unrelated third parties.

D. If, during any phase of the construction, operation, maintenance, or termination of the road, any oil or other pollutant should be discharged, impacting Federal lands, the control and total removal, disposal, and cleaning up of such oil or other pollutant, wherever found, shall be the responsibility of the holder, regardless of fault. Upon failure of the holder to control, dispose of, or clean up such discharge on or affecting Federal lands, or to repair all damages to Federal lands resulting there from, the Authorized Officer may take such measures as deemed necessary to control and cleanup the discharge and restore the area, including, where appropriate, the aquatic environment and fish and wildlife habitats, at the full expense of the holder. Such action by the Authorized Officer shall not relieve the holder of any liability or responsibility.

E. The holder shall minimize disturbance to existing fences and other improvements on public domain surface. The holder is required to promptly repair improvements to at least their former state. Functional use of these improvements will be maintained at all times.

The holder will make a documented good-faith effort to contact the owner of any improvements prior to disturbing them. When necessary to pass through a fence line, the fence shall be braced on both sides of the passageway prior to cutting of the fence.

F. The Holder shall ensure that the entire right-of-way, including the driving surface, ditching and drainage control structures, road verges and any construction sites or zones, will be kept free of the following plant species: Malta starthistle, African rue, Scotch thistle and salt cedar.

Holder agrees to comply with the following stipulations:

1. ROAD WIDTH AND GRADE

The road will have a driving surface of 14 feet (all roads shall have a minimum driving surface of 12 feet, unless local conditions dictate a different width). The maximum grade is 10 percent unless the box below is checked. Maximum width of surface disturbance from construction will be 30 feet.

☐ Those segments of road where grade is in excess of 10% for more than 300 feet shall be designed by a professional engineer.

2. CROWNING AND DITCHING

Crowning with materials on site and ditching on one side of the road on the uphill side will be required. The road cross-section will conform to the cross section diagrams in Figure 1. If conditions dictate, ditching may be required for both sides of the road; if local conditions permit, a flat-bladed road may be considered (if these conditions exist, check the appropriate box below). The crown shall have a grade of approximately 2% (i.e., 1" crown on a 12' wide road).

☒ Ditching will be required on both sides of the roadway as shown on the attached map or as staked in the field.

☐ Flat-blading is authorized on segment(s) delineated on the attached map.

3. DRAINAGE

Drainage control shall be ensured over the entire road through the use of borrow ditches, outsloping, insloping, natural rolling topography, lead-off (turnout) ditches, culverts, and/or drainage dips.

A. All lead-off ditches shall be graded to drain water with a 1 percent minimum to 3 percent maximum ditch slope. The spacing interval for lead-off ditches shall be determined according to the following table, but may be amended depending upon existing soil types and centerline road slope (in %):

SPACING INTERVAL FOR TURNOUT DITCHES

Percent slope	Spacing interval
0% - 4%	400' - 150'
4% - 6%	250' - 125'
6% - 8%	200' - 100'
8% - 10%	150' - 75'

A typical lead-off ditch has a minimum depth of 1 foot below and a berm 6 inches above natural ground level. The berm will be on the down-slope side of the lead-off ditch. The ditch end will tie into vegetation whenever possible.

For this road the spacing interval for lead-off ditches shall be at

☒ 400 foot intervals.

☐ _____ foot intervals.

☐ locations staked in the field as per spacing intervals above.

☐ locations delineated on the attached map.

B. Culvert pipes shall be used for cross drains where drainage dips or low water crossings are not feasible. The minimum culvert diameter must be 18 inches. Any culvert pipe installed shall be of sufficient diameter to pass the anticipated flow of water. Culvert location and required diameter are shown on the attached map (Further details can be obtained from the Roswell District Office or the appropriate Resource Area Office).

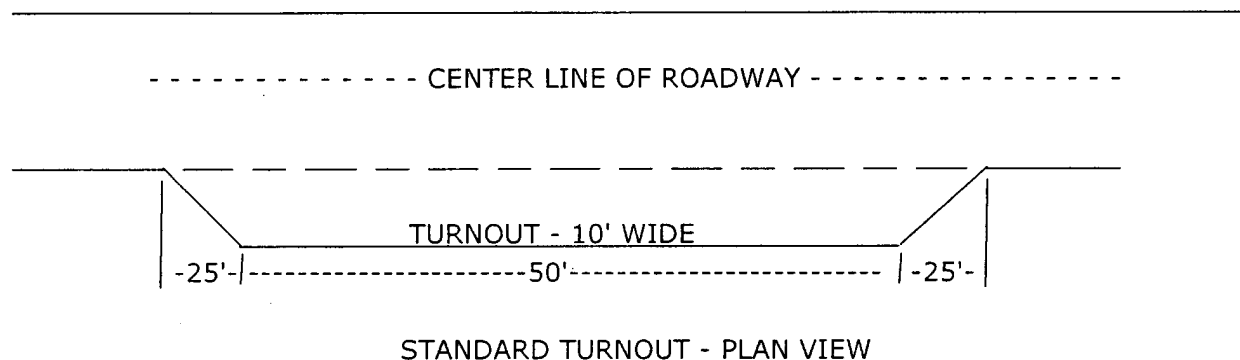
C. On road slopes exceeding 2%, drainage dips shall drain water into an adjacent lead-off ditch. Drainage dip location and spacing shall be determined by the formula:

spacing interval = $\frac{400'}{\text{road slope in \%}} + 100'$

Example: 4% slope: spacing interval = $\frac{400}{4} + 100 = 200$ feet

4. TURNOUTS

Unless otherwise approved by the Authorized Officer, vehicle turnouts will be required. Turnouts will be located at 2000-foot intervals, or the turnouts will be intervisible, whichever is less. Turnouts will conform to the following diagram:



5. SURFACING

Surfacing of the road or those portions identified on the attached map may, at the direction of the Authorized Officer, be required, if necessary, to maintain traffic within the right-of-way with caliche, gravel, or other surfacing material which shall be approved by the Authorized Officer. When surfacing is required, surfacing materials will be compacted to a minimum thickness of six inches with caliche material. The width of surfacing shall be no less than the driving surface. Prior to using any mineral materials from an existing or proposed Federal source, authorization must be obtained from the Authorized Officer.

A sales contract for the removal of mineral materials (caliche, sand, gravel, fill dirt, etc.) from an authorized pit, site, or on location must be obtained from the BLM prior to using any such mineral material from public lands. Contact the BLM solid minerals staff for the various options to purchase mineral material.

6. CATTLEGUARDS

Where used, all cattleguard grids and foundation designs and construction shall meet the American Association of State Highway and Transportation Officials (AASHTO) Load Rating H-20, although AASHTO U-80 rated grids shall be required where heavy loads (exceeding H-20 loading), are anticipated (See BLM standard drawings for cattleguards). Cattleguard grid length shall not be less than 8 feet and width of not less than 14 feet. A wire gate (16-foot minimum width) will be provided on one side of the cattleguard unless requested otherwise by the surface user.

7. MAINTENANCE

The holder shall maintain the road in a safe, usable condition. A maintenance program shall include, but not be limited to blading, ditching, culvert installation, culvert cleaning, drainage installation, cattleguard maintenance, and surfacing.

8. PUBLIC ACCESS

Public access along this road will not be restricted by the holder without specific written approval being granted by the Authorized Officer. Gates or cattleguards on public lands will not be locked or closed to public use unless closure is specifically determined to be necessary and is authorized in writing by the Authorized Officer.

9. CULTURAL RESOURCES

Any cultural and/or paleontological resource (historic or prehistoric site or object) discovered by the holder, or any person working on the holder's behalf, on public or Federal land shall be immediately reported to the authorized officer. The holder shall suspend all operations in the immediate area of such discovery until written authorization to proceed is issued by the authorized officer. An evaluation of the discovery will be made by the authorized officer to determine appropriate actions to prevent the loss of significant cultural or scientific values. The holder will be responsible for the cost of evaluation and any decision as to the proper mitigation measures will be made by the authorized officer after consulting with the holder.

10. SPECIAL STIPULATIONS:

BLM Serial Number: NM-93223

Company Reference: Jumbo American Petroleum Corp.

Well No. & Name: Madera 19 Federal #2A 3
per SW dated 10/5/05

STANDARD STIPULATIONS FOR SURFACE INSTALLED PIPELINES

Holder agrees to comply with the following stipulations to the satisfaction of the Authorized Officer:

1. The holder shall indemnify the United States against any liability for damage to life or property arising from the occupancy or use of public lands under this grant.
2. The holder shall comply with all applicable Federal laws and regulations existing or hereafter enacted or promulgated. In any event, the holder shall comply with the Toxic Substances Control Act of 1976 as amended, 15 USC 2601 et seq. (1982) with regards to any toxic substances that are used, generated by or stored on the right-of-way or on facilities authorized under this right-of-way grant. (See 40 CFR, Part 702-799 and especially, provisions on polychlorinated biphenyls, 40 CFR 761.1-761.193.) Additionally, any release of toxic substances (leaks, spills, etc.) in excess of the reportable quantity established by 40 CFR, Part 117 shall be reported as required by the Comprehensive Environmental Response, Compensation, and Liability Act, section 102b. A copy of any report required or requested by any Federal agency or State government as a result of a reportable release or spill of any toxic substances shall be furnished to the authorized officer concurrent with the filing of the reports to the involved Federal agency or State government.
3. The holder agrees to indemnify the United States against any liability arising from the release of any hazardous substance or hazardous waste (as these terms are defined in the Comprehensive Environmental Response, Compensation and Liability Act of 1980, 42 U.S.C. 9601, et seq. or the Resource Conservation and Recovery Act, 42 U.S.C. 6901, et seq.) on the Right-of-Way (unless the release or threatened release is wholly unrelated to activity of the Right-of-Way holder's activity on the Right-of-Way), or resulting from the activity of the Right-of-Way holder on the Right-of-Way. This agreement applies without regard to whether a release is caused by the holder, its agent, or unrelated third parties.
4. The holder shall be liable for damage or injury to the United States to the extent provided by 43 CFR Sec. 2883.1-4. The holder shall be held to a standard of strict liability for damage or injury to the United States resulting from pipe rupture, fire, or spills caused or substantially aggravated by any of the following within the right-of-way or permit area:
 - a. Activities of the holder including, but not limited to construction, operation, maintenance, and termination of the facility.
 - b. Activities of other parties including, but not limited to:
 - (1) Land clearing.
 - (2) Earth-disturbing and earth-moving work.

- (3) Blasting.
- (4) Vandalism and sabotage.

c. Acts of God.

The maximum limitation for such strict liability damages shall not exceed one million dollars (\$1,000,000) for any one event, and any liability in excess of such amount shall be determined by the ordinary rules of negligence of the jurisdiction in which the damage or injury occurred.

This section shall not impose strict liability for damage or injury resulting primarily from an act of war or from the negligent acts or omissions of the United States.

5. If, during any phase of the construction, operation, maintenance, or termination of the pipeline, any oil, salt water, or other pollutant should be discharged from the pipeline system, impacting Federal lands, the control and total removal, disposal, and cleaning up of such oil, salt water, or other pollutant, wherever found, shall be the responsibility of the holder, regardless of fault. Upon failure of the holder to control, dispose of, or clean up such discharge on or affecting Federal lands, or to repair all damages resulting therefrom, on the Federal lands, the Authorized Officer may take such measures as he deems necessary to control and clean up the discharge and restore the area, including, where appropriate, the aquatic environment and fish and wildlife habitats, at the full expense of the holder. Such action by the Authorized Officer shall not relieve the holder of any responsibility as provided herein.

6. All construction and maintenance activity will be confined to the authorized right-of-way width of 10 feet.

7. No blading or clearing of any vegetation will be allowed unless approved in writing by the Authorized Officer.

8. The holder shall install the pipeline on the surface in such a manner that will minimize suspension of the pipeline across low areas in the terrain. In hummocky or dune areas, the pipeline will be "snaked" around hummocks and dunes rather than suspended across these features.

9. The pipeline shall be buried with a minimum of 36 inches under all roads, "two-tracks," and trails. Burial of the pipe will continue for 20 feet on each side of each crossing. The condition of the road, upon completion of construction, shall be returned to at least its former state with no bumps or dips remaining in the road surface.

10. The holder shall minimize disturbance to existing fences and other improvements on public lands. The holder is required to promptly repair improvements to at least their former state. Functional use of these improvements will be maintained at all times. The holder will contact the owner of any improvements prior to disturbing them. When necessary to pass through a fence line, the fence shall be braced on both sides of the passageway prior to cutting of the fence. No permanent gates will be allowed unless approved by the Authorized Officer.

11. In those areas where erosion control structures are required to stabilize soil conditions, the holder will install such structures as are suitable for the specific soil conditions being encountered and which are in accordance with sound resource management practices.
12. Excluding the pipe, all above-ground structures not subject to safety requirement shall be painted by the holder to blend with the natural color of the landscape. The paint used shall be a color which simulates "Standard Environmental Colors" – **Shale Green**, Munsell Soil Color No. 5Y 4/2; designated by the Rocky Mountain Five State Interagency Committee.
13. The pipeline will be identified by signs at the point of origin and completion of the right-of-way and at all road crossings. At a minimum, signs will state the holder's name, BLM serial number, and the product being transported. Signs will be maintained in a legible condition for the life of the pipeline.
14. The holder shall not use the pipeline route as a road for purposes other than routine maintenance as determined necessary by the Authorized Officer in consultation with the holder. The holder will take whatever steps are necessary to ensure that the pipeline route is not used as a roadway.
15. Any cultural and/or paleontological resource (historic or prehistoric site or object) discovered by the holder, or any person working on his behalf, on public or Federal land shall be immediately reported to the authorized officer. Holder shall suspend all operations in the immediate area of such discovery until written authorization to proceed is issued by the authorized officer. An evaluation of the discovery will be made by the authorized officer to determine appropriate cultural or scientific values. The holder will be responsible for the cost of evaluation and any decision as to proper mitigation measures will be made by the authorized officer after consulting with the holder.
16. Special Stipulations:

(March 1989)

District I
1625 N. French Dr., Hobbs, NM 88240
District II
1301 W. Grand Avenue, Artesia, NM 88210
District III
1000 Rio Brazos Road, Aztec, NM 87410
District IV
1220 S. St. Francis Dr., Santa Fe, NM 87505

State of New Mexico
Energy Minerals and Natural Resources

Oil Conservation Division
1220 South St. Francis Dr.
Santa Fe, NM 87505

Form C-144
March 12, 2004

For drilling and production facilities, submit to
appropriate NMOCD District Office.
For downstream facilities, submit to Santa Fe
office

Pit or Below-Grade Tank Registration or Closure

Is pit or below-grade tank covered by a "general plan"? Yes ☐ No ☒

Type of action: Registration of a pit or below-grade tank ☒ Closure of a pit or below-grade tank ☐

Operator: **JUMBO AMERICAN PETROLEUM CORP.** Telephone: **432-682-6495** e-mail address: _____
Address: **550 WEST TEXAS SUITE 1303 MIDLAND, TEXAS 79701**
Facility or well name: **MADERA "19" FEDERAL** API #: **30-025-37550** U/L or Qtr/Qtr _____ Sec **19** T **26S** R **35E**
County: **LEA** Latitude **32°01'36.8"** Longitude **103°24'29.78"** NAD: 1927 ☐ 1983 ☐ Surface Owner Federal ☒ State ☐ Private ☐ Indian ☐

Pit

Type: Drilling ☒ Production ☐ Disposal ☐

Workover ☐ Emergency ☐

Lined ☒ Unlined ☐

Liner type: Synthetic ☒ Thickness **12** mil Clay ☐ Volume
18M bbl

Below-grade tank

Volume: _____ bbl Type of fluid: _____

Construction material: _____

Double-walled, with leak detection? Yes ☐ If not, explain why not.

Depth to ground water (vertical distance from bottom of pit to seasonal high
water elevation of ground water.) **200'+**

Less than 50 feet
50 feet or more, but less than 100 feet
100 feet or more

(20 points)
(10 points)
(0 points)

Wellhead protection area: (Less than 200 feet from a private domestic
water source, or less than 1000 feet from all other water sources.)

Yes
No

(20 points)
(0 points)

Distance to surface water: (horizontal distance to all wetlands, playas,
irrigation canals, ditches, and perennial and ephemeral watercourses.)
Stock tank .7 miles Northeast

Less than 200 feet
200 feet or more, but less than 1000 feet
1000 feet or more

(20 points)
(10 points)
(0 points)

Ranking Score (Total Points)

0

0

If this is a pit closure: (1) attach a diagram of the facility showing the pit's relationship to other equipment and tanks. (2) Indicate disposal location:

onsite ☐ offsite ☐ If offsite, name of facility _____

(3) Attach a general description of remedial action taken including remediation start date and end date. (4) Groundwater encountered: No ☐ Yes ☐ If yes, show depth below ground surface _____ ft. and attach sample results. (5) Attach soil sample results and a diagram of sample locations and excavations.

I hereby certify that the information above is true and complete to the best of my knowledge and belief. I further certify that the above-described pit or below-grade tank has
been/will be constructed or closed according to NMOCD guidelines ☒, a general permit ☐, or an (attached) alternative OCD-approved plan ☐.

Date: **09/18/05**

Printed Name/Title **Joe T. Janica Agent**

Signature

Your certification and NMOCD approval of this application/closure does not relieve the operator of liability should the contents of the pit or tank contaminate ground water or
otherwise endanger public health or the environment. Nor does it relieve the operator of its responsibility for compliance with any other federal, state, or local laws and/or
regulations.

Approval:

Date: _____

Printed Name/Title

PETROLEUM ENGINEER

Signature

2 A