

District I
1625 N. French Dr., Hobbs, NM 88240
District II
1301 W. Grand Avenue, Artesia, NM 88210
District III
1000 Rio Brazos Road, Aztec, NM 87410
District IV
1220 S. St. Francis Dr., Santa Fe, NM 87505

State of New Mexico
Energy Minerals and Natural Resources

Form C-101
May 27, 2004

Oil Conservation Division
1220 South St. Francis Dr.
Santa Fe, NM 87505

Submit to appropriate District Office

☐ AMENDED REPORT

APPLICATION FOR PERMIT TO DRILL, RE-ENTER, DEEPEN, PLUGBACK, OR ADD A ZONE

Operator Name and Address SUNDOWN ENERGY, INC. LP 13455 NOEL ROAD SUITE 2000 DALLAS, TEXAS 75240		² OGRID Number 232611
		³ API Number 30 - 025-37552
¹ Property Code 301207	⁴ Property Name FOSTER	⁵ Well No. 2
⁶ Proposed Pool 1 FOSTER SAN ANDRES (24890)		⁷ Proposed Pool 2

⁷ Surface Location

UL or lot no. B	Section 6	Township 19S	Range 39E	Lot Idn	Feet from the 910'	North/South line NORTH	Feet from the 1650'	East/West line EAST	County LEA
--------------------	--------------	-----------------	--------------	---------	-----------------------	---------------------------	------------------------	------------------------	---------------

⁸ Proposed Bottom Hole Location If Different From Surface

UL or lot no.	Section	Township	Range	Lot Idn	Feet from the	North/South line	Feet from the	East/West line	County
---------------	---------	----------	-------	---------	---------------	------------------	---------------	----------------	--------

Additional Well Information

¹¹ Work Type Code N	¹² Well Type Code O	¹³ Cable/Rotary ROTARY	¹⁴ Lease Type Code P	¹⁵ Ground Level Elevation 3602'
¹⁶ Multiple NO	¹⁷ Proposed Depth 4600'	¹⁸ Formation SAN ANDRES	¹⁹ Contractor CAPSTAR	²⁰ Spud Date 11/29/05
Depth to Groundwater 51+'		Distance from nearest fresh water well 400'		Distance from nearest surface water None known
Pit: Liner: Synthetic <input checked="" type="checkbox"/> 12 mils thick Clay <input type="checkbox"/> Pit Volume: 12M bbls Drilling Method: Fresh Water <input checked="" type="checkbox"/> Brine Diesel Oil Gas/Air				
Closed-Loop System <input type="checkbox"/>				

²¹ Proposed Casing and Cement Program

Hole Size	Casing Size	Casing weight/foot	Setting Depth	Sticks of Cement	Estimated TOC
26"	20"	Conductor	40'	Redi-mix	Surface
12 1/4"	8 5/8"	24#	375'	400 Sx.	Surface
7 7/8"	4 1/2"	11.6#	4600'	950 Sx.	Surface

Permit Expires 1 Year From Approval

²² Describe the proposed program. If this application is to DEEPEN or PLUG BACK, give the data on the present productive zone and proposed new productive zone. Describe the blowout prevention program, if any. Use additional sheets if necessary.

1. Drill 26" hole to 40'. Set 40' of 20" conductor pipe and cement to surface with Redi-mix.
2. Drill 12 1/4" hole to 375'. Run and set 375' of 8 5/8" 24# J-55 ST&C casing. Cement with 400 Sx. of Class "C" cement + 2% CaCl, + 1/4# Flocele/Sx. circulate cement to surface.
3. Drill 7 7/8" hole to 4600'. Run and set 4600' of 4 1/2" 11.6# J-55 ST&C casing. Cement with 600 Sx. of Class "C" Light weight cement + additives, tail in with 300 Sx. of Class "C" cement + 2% CaCl, + 1/4# Flocele/Sx. top of cement surface.

²³ I hereby certify that the information given above is true and complete to the best of my knowledge and belief. I further certify that the drilling pit will be constructed according to NMOC guidelines ☒ a general permit ☐ or an (attached) alternative OCD-approved plan ☐.

Printed name: Joe T. Janica

Title: Agent

E-mail Address:

Date: 11/11/05

Phone: 505-391-8503

OIL CONSERVATION DIVISION

Approved by:

Title:

PETROLEUM ENGINEER

Approval Date:

NOV 14 2005

Expiration Date:

Conditions of Approval Attached ☐

District I
1625 N. French Dr., Hobbs, NM 88240
District II
1301 W. Grand Avenue, Artesia, NM 88210
District III
1000 Rio Brazos Rd., Aztec, NM 87410
District IV
1220 S. St. Francis Dr., Santa Fe, NM 87505

State of New Mexico
Energy, Minerals & Natural Resources Department
OIL CONSERVATION DIVISION
1220 South St. Francis Dr.
Santa Fe, NM 87505

Form C-102
Revised October 12, 2005
Submit to Appropriate District Office
State Lease- 4 Copies
Fee Lease- 3 Copies

☐ AMENDED REPORT

WELL LOCATION AND ACREAGE DEDICATION PLAT

API Number 38-025-37552	Pool Code 24890	Pool Name FOSTER SAN ANDRES
Property Code 301207	Property Name FOSTER RANCH	Well Number 2
GRID No. 232611	Operator Name SUNDOWN ENERGY CO. LP	Elevation 3602.2'

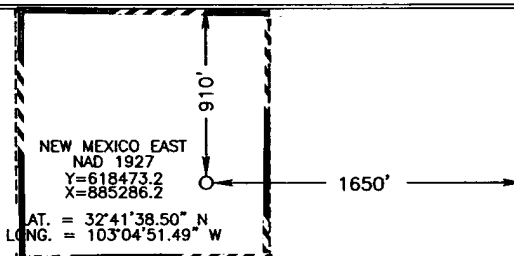
Surface Location

UL or lot no. B	Section 6	Township 19	Range 39	Lot Idn	Feet from the 910	North/South line NORTH	Feet from the 1650	East/West line EAST	County LEA
---------------------------	---------------------	-----------------------	--------------------	---------	-----------------------------	----------------------------------	------------------------------	-------------------------------	----------------------

Bottom Hole Location If Different From Surface

UL or lot no.	Section	Township	Range	Lot Idn	Feet from the	North/South line	Feet from the	East/West line	County
Dedicated Acres 40		Joint or Infill	Consolidation Code		Order No.				

No allowable will be assigned to this completion until all interests have been consolidated or a non-standard unit has been approved by the division.



OPERATOR CERTIFICATION

I hereby certify that the information contained herein is true and complete to the best of my knowledge and belief, and that this organization either owns a working interest or unleased mineral interest in the land including the proposed bottom hole location or has a right to drill this well at this location pursuant to a contract with an owner of such a mineral or working interest, or to a voluntary pooling agreement or a compulsory pooling order heretofore entered by the division.

Joe T. Janica 11/11/05
Signature Date

Joe T. Janica
Printed Name

SURVEYOR CERTIFICATION

I hereby certify that the well location shown on this plat was plotted from field notes of actual surveys made by me or under my supervision, and that the same is true and correct to the best of my belief.

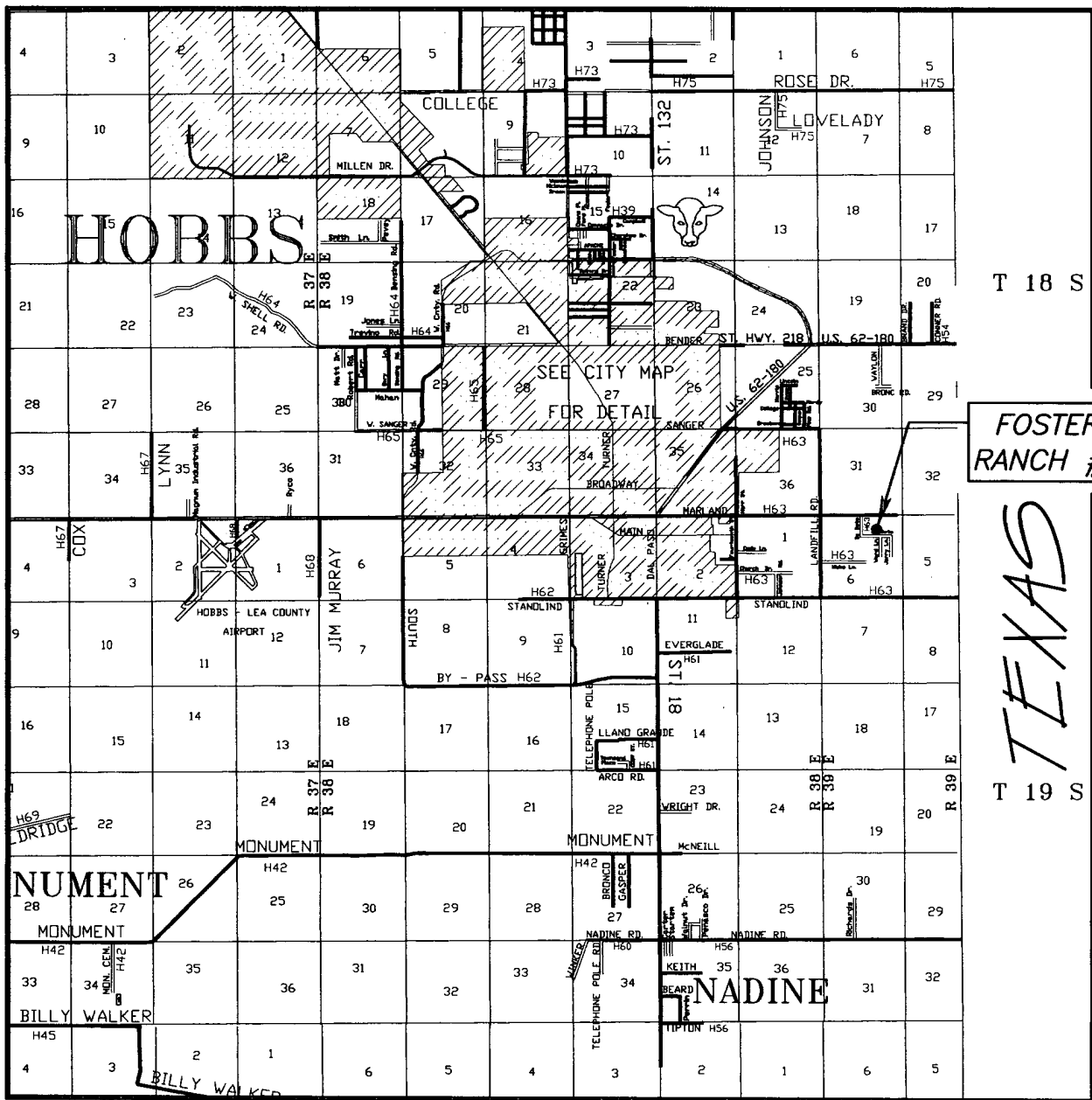
OCTOBER 15 2005
Date of Survey

Signature and Seal of
Professional Surveyor

Tommy G. Hall 11/10/2005
Certificate Number 15079

WO# 051013WL (CDG)

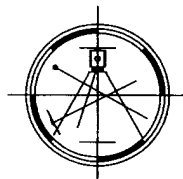
VICINITY MAP



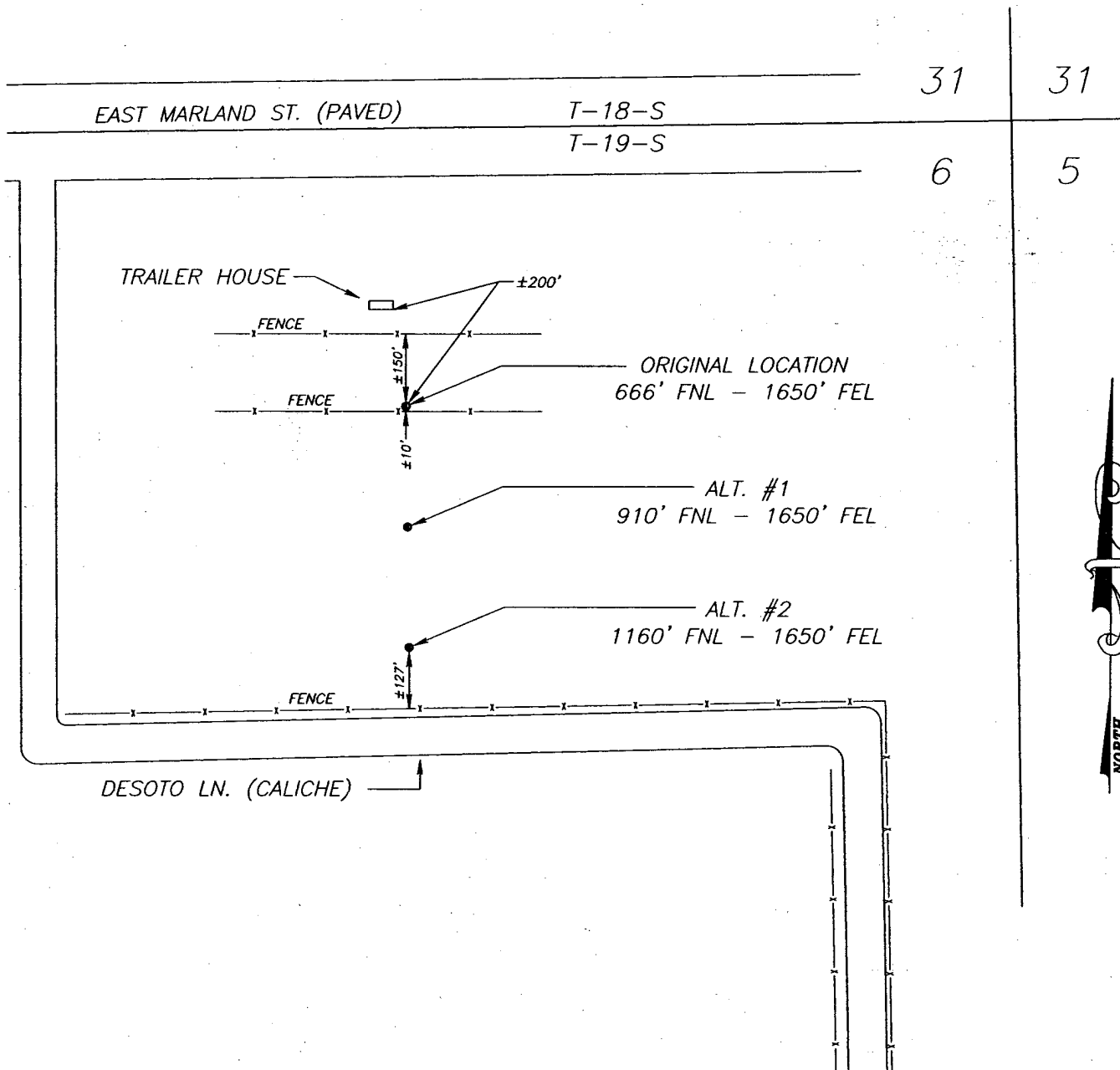
SCALE: 1" = 2 MILES

SEC. 6 TWP. 19-S RGE. 39-E
 SURVEY N.M.P.M.
 COUNTY LEA
 DESCRIPTION 910' FNL & 1650' FEL
 ELEVATION 3602.2'
 OPERATOR SUNDOWN ENERGY CO.
 LEASE FOSTER RANCH

Asel Surveying
 & Consulting
 P.O. BOX 393 - 310 W. TAYLOR
 HOBBS, NEW MEXICO - 505-393-9146



SUNDOWN ENERGY CO. - FOSTER RANCH #2



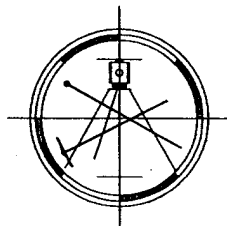
NOT TO SCALE

SUNDOWN ENERGY CO.

FOSTER RANCH #2 AREA MAP
SECTION 6, TOWNSHIP 19 SOUTH, RANGE 39 EAST, NMPM,
LEA COUNTY, NEW MEXICO

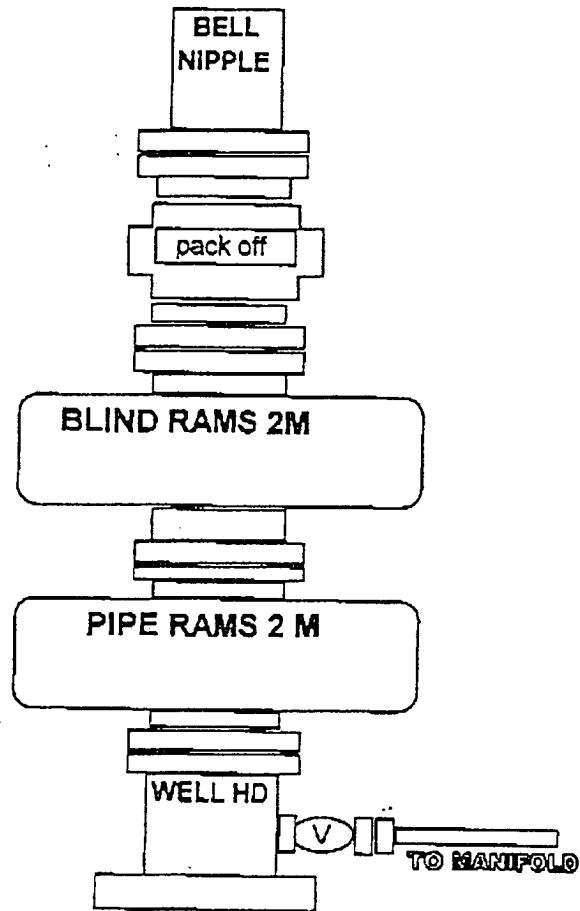
Asel Surveying
& Consulting

P.O. BOX 393 - 310 W. TAYLOR
HOBBS, NEW MEXICO - 505-393-9146



Survey Date: 10/13/2005	W.O. Number: 051013WL
	File: 051013WL.DWG
Date: 10/19/2005	Drafted By: Curtis Griffin

11" 2M



CHOKE MANIFOLD

3000 PSI WP

