

Submit 3 Copies To Appropriate District Office  
District I  
1625 N. French Dr., Hobbs, NM 88240  
District II  
1301 W. Grand Ave., Artesia, NM 88210  
District III  
1000 Rio Brazos Rd., Aztec, NM 87410  
District IV  
1220 S. St. Francis Dr., Santa Fe, NM 87505

State of New Mexico  
Energy, Minerals and Natural Resources

Form C-103  
May 27, 2004

OIL CONSERVATION DIVISION  
1220 South St. Francis Dr.  
Santa Fe, NM 87505

WELL API NO.	30-025-09659
5. Indicate Type of Lease STATE <input type="checkbox"/> FEE <input checked="" type="checkbox"/>	
6. State Oil & Gas Lease No. NM 12612	
7. Lease Name or Unit Agreement Name NM 70962X	
8. Well Number Cooper Jal Unit 238	
9. OGRID Number 193003	
10. Pool name or Wildcat JALMAT: Tan, Y, 7-R; Langlie Mattix: 7-R, Q, GB	

SUNDRY NOTICES AND REPORTS ON WELLS  
(DO NOT USE THIS FORM FOR PROPOSALS TO DRILL OR TO DEEPEN OR PLUG BACK TO A DIFFERENT RESERVOIR. USE "APPLICATION FOR PERMIT" (FORM C-101) FOR SUCH PROPOSALS.)

1. Type of Well: Oil Well ☐ Gas Well ☐ Other ☐ Injector ☒

2. Name of Operator  
SDG Resources L. P.

3. Address of Operator  
P. O. Box 1390  
Montrose, CO 81402

4. Well Location

Unit Letter E 1980 feet from the NORTH line and 330 feet from the WEST line  
Section 25 Township 24S Range 36E NMPM LEA County

11. Elevation (Show whether DR, RKB, RT, GR, etc.)  
3,303' GL

Pit or Below-grade Tank Application ☐ or Closure ☐

Pit type DIRT Depth to Groundwater 130 feet Distance from nearest fresh water well >1000 feet Distance from nearest surface water >1000 feet

Pit Liner Thickness: 12 mil Below-Grade Tank: Volume 200 bbls; Construction Material Synthetic

12. Check Appropriate Box to Indicate Nature of Notice, Report or Other Data

NOTICE OF INTENTION TO:

PERFORM REMEDIAL WORK ☐ PLUG AND ABANDON ☐  
TEMPORARILY ABANDON ☐ CHANGE PLANS ☐  
PULL OR ALTER CASING ☐ MULTIPLE COMPL ☐  
OTHER: Perform Step-Rate Test. ☒

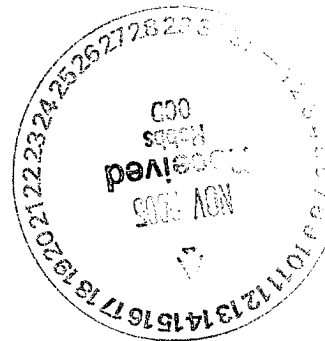
SUBSEQUENT REPORT OF:

REMEDIAL WORK ☐ ALTERING CASING ☐  
COMMENCE DRILLING OPNS. ☐ P AND A ☐  
CASING/CEMENT JOB ☐  
OTHER: ☐

13. Describe proposed or completed operations. (Clearly state all pertinent details, and give pertinent dates, including estimated date of starting any proposed work). SEE RULE 1103. For Multiple Completions: Attach wellbore diagram of proposed completion or recompletion.

Objective: Perform Step-Rate Test.

1. Shut well in 24 hours prior to test.
  2. R.U. Arc Pressure Data, Inc.
  3. RIH with pressure bomb and locate at mid-perfs.
  4. Start injection at 100 bwpd for 1 hour.
  5. Ramp rates up at 100 - 200 bwpd increments per hour.
- Note: Obtain at least 3 points before parting pressure and 3 - 4 points after parting pressure.  
Note: Maximum rate should be 1000 bwpd.
6. POOH with pressure bomb. R. D. Arc Pressure Data, Inc.
  7. Place well on injection at 400 bwpd.



I hereby certify that the information above is true and complete to the best of my knowledge and belief. I further certify that any pit or below-grade tank has been/will be constructed or closed according to NMOCDC guidelines ☐, a general permit ☐ or an (attached) alternative OCD-approved plan ☐.

SIGNATURE Domingo Carvajal TITLE Senior Petroleum Engineer DATE 11/10/05

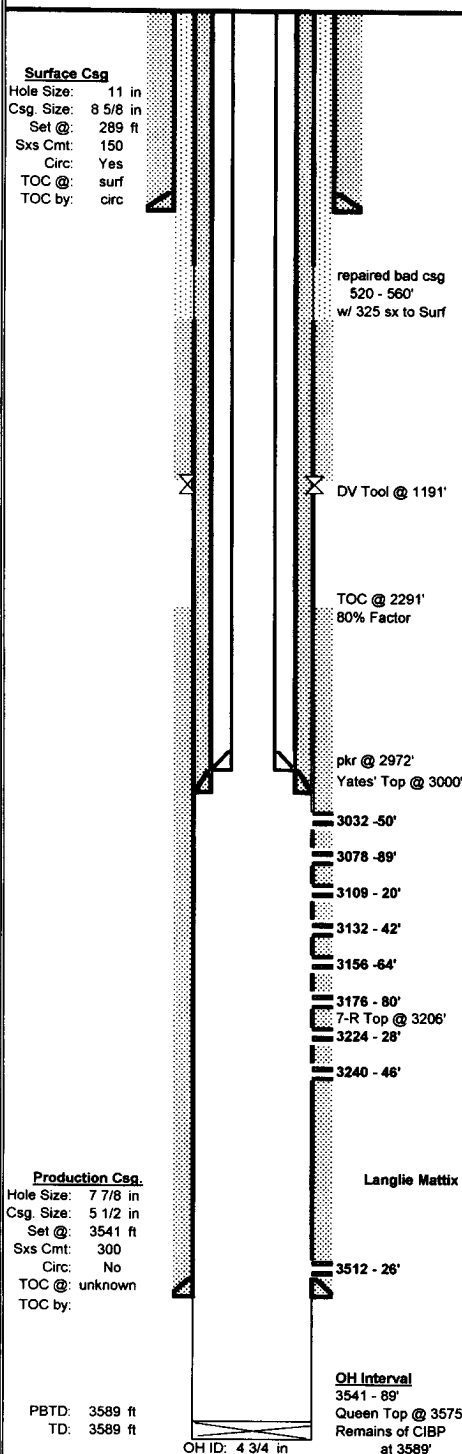
Type or print name  
For State Use Only

E-mail address: Domingo@sdgresources.com Telephone No. 432-580-8500

APPROVED BY: Gary W. Wink TITLE NOV 10 2005  
Conditions of Approval (if any): OC FIELD REPRESENTATIVE II/STAFF MANAGER

## WELLBORE SCHEMATIC AND HISTORY

## CURRENT COMPLETION SCHEMATIC



## LEASE NAME

Cooper Jal Unit

WELL NO. (Formerly No. 14: 238 W

## STATUS:

Active

Water Injector

## API#

30-025-09659

## LOCATION:

1980 FNL &amp; 330 FWL, Sec 25, T - 24S, R - 36E; Lee County, New Mexico

## SPUD DATE:

07/23/54 TD

3589

KB

3,312'

DF

3,311'

## INT. COMP. DATE:

08/11/54 PBTD

3589

GL

3,303'

## GEOLOGICAL DATA

## ELECTRIC LOGS:

GR-N from 100 - 3588' (8-9-54 Schlumberger)

GR-N (8-9-56 Schlumberger)

GR-BHC-Acoustilog from 2050 - 3564' (8-31-71 Dresser Atlas)

## HYDROCARBON BEARING ZONE DEPTH TOPS:

Yates @ 3000'

Seven Rivers @ 3206'

Queen @ 3575'

## CORES, DST'S or MUD LOGS:

## CASING PROFILE

SURF. 8 5/8" - set@ 289' Cmt'd w/150 sxs - circ cmt to surf.

PROD. 5 1/2" - 15.5#, J-55 set@ 3541' Cmt'd w/200 sxs - TOC @ 2291' Calc @ 80%. DV tool @ 1191' - pmp 100 sxs - TOC@ 560'

LINER 4 1/2" - 47 jts 11.5# J-55 &amp; 43 jts 12.6# L80, set @ 3012', cemented with 150 Star Lite C, tailed w/ 25 sxs Class C, circulated to:

## CURRENT PERFORATION DATA

## CSG. PERFS:

## OPEN HOLE:

3032 - 50', 3078 - 89', 3109 - 20', 3132 - 42', 3156 - 64',

3176 - 80', 3224 - 28', &amp; 3240 - 46' w/ 1 spf (82 holes)

3512 - 26' Isolated w/CIBP@ 3350'

3541 - 89'

## TUBING DETAIL

3/8/2005

## ROD DETAIL

## Length (ft)

## Detail

0.00 KB

2969.00 96 jts - 2 3/8" 4.7#, CL, J-55, 8rd EUE tbg.

3.00 1- 5 1/2" x 2 3/8" Baker Model AD-1 packer Teflon coated

2972.00 btm

## WELL HISTORY SUMMARY

- 11-Aug-54 Initial completion interval: 3541 - 89' (Seven Rivers OH). Frac'd w/5,000 gals Dowell Petrofrac w/ 7,400#s sand. Well flowed 80% load of Oil and died.
- 07-Sep-54 Perf'd interval 3512 - 26' (Seven Rivers) and Frac'd w/4,000 gals Dowell Petrofrac w/5,000#s sand. Placed well on rod pump. Well produced 20 bwpd on pmp after 80% load oil returned.
- 08-Nov-54 Removed tbg & rods from well. Shut-in well with 2" valve on national tbg head.
- 12-Oct-71 Ran GR - N and Acustilog. Set CIBP@ 3350' and dmp 2 sxs cmt on top of CIBP. Perforated (Jalmat) w/ 1 spf: 3032'-50', 3078'-89', 3109'-20', 3132'-42', 3166'-64', 3176'-80', 3224'-28', & 3240'-46'. Acid'd perfs w/2200 gals 15% acid in 3 stages. Ran pkr on 2 3/8" CL tbg. Set pkr @ 2965'. Shut-in well pending water injection facilities.
- 23-Feb-89 C/O fill from 3390 - 3310'. Acidized perfs (3032 - 3246') w/ 3,000 gals 15% NEFE HCL dropping 90 RCN ballsealers. AIR=3.2 bpm @ 1,000 psi. ISIP=750 psi. Ran pkr on 2 3/8" CL tbg. Set pkr @ 2976'. Initiated injection @ 200 bwpd, TP=550 spt.
- 17-May-93 C/O fill (iron sulfide, paraffin & calcium carbonate scale) from 3165 - 3335' (170'). Acid'd perfs (3032 - 3246') w/ 5000 gals 15% NEFE HCL, 1100 gals mutual solvent, and 110 gals Checker Sol (Micellar solvent) dropping 1100#s rocksalt in three block stages. Identified csg leak @ 620 - 660'. Pmp 325 sxs cmt down 5 1/2" and circ back to surface up 5 1/2" x 8 5/8" annulus. SIP=500 psi. WOC. D/O cmt from surface to 594'. Test csg to 300 psi. OK. Ran pkr on 2 3/8" CL tbg. Set pkr @ 2972'. Test pkr & csg. OK. Initiated injection @ 91 bwpd, TP=700 psi.
- 4-Feb-02 Tagged fill using slick lineunit (1 1/4" x 5' sinker bar). Tagged fill at 3,048' (541' of fill).
- 20-Jan-05 POOH w/ 2 3/8" IPC tbg and AD-1 Pkr. RIH with 4 3/4" and tagged at 3,045'. Drilled out CIBP at 3,350', pushed CIBP remains to 3,589'. Washed Perfs 3,032'-3,499' and open hole 3,541' to 3,589' with 199 bbls surfactant water w/ 2% KCl. Acid the Perfs and Open hole with 4,200 gals 15% NEFE HCL via Perf-Clean Tool. RIH with Injection string & packer. Found casing leak between 520' to 560'. Circulate with 60 barrels of 10# Super Vis Packer Fluid. Pressure test annulus to 500 psig, lost 60 psig in 1 minute. Packer at 2,972'.
- 28-Feb-05 POOH w/ 2 3/8" IPC tbg and AD-1 Pkr. Ran GR-CCL f/ 3038' to 2460'. Set CIBP at 3025', dumped 9' cement on top. RIH with 65 - 4 1/2" liner f/ 3012' to surface. Cemented with 150 sacks Star Lite C, tailed w/ 25 sacks Class C, circulated cement to surface. RIH with 3 7/8" bit, drilled out Float Collar, Float Shoe. Pushed CIBP down to 3589'. Hydrotest 2 3/8" cement lined tubing to 2,969'. Set 4 1/2" Baker Model AD-1 (Teflon coated) at 2,972'. MIT annulus to 380 psig for 30 minutes - held.

## PREPARED BY:

Larry S. Adams

D. Carrizales

## UPDATED:

09-Mar-05