

DISTRICT I
P.O. Box 1980, Hobbs, NM 88241-1980
DISTRICT II
P.O. Box Drawer DD, Artesia, NM 88211-0719
DISTRICT III
1000 Rio Brazos Rd., Aztec, NM 87410
DISTRICT IV
P.O. Box 2088, Santa Fe, NM 87504-2088

State of New Mexico
Energy, Minerals and Natural Resources Department

OIL CONSERVATION DIVISION

P.O. Box 2088
Santa Fe, New Mexico 87504-2088

Form C-101

Revised February 10, 1999

Instructions on back
Submit to Appropriate District Office
State Lease - 6 Copies
Fee Lease - 5 Copies

☐ AMENDED REPORT

APPLICATION FOR PERMIT TO DRILL, RE-ENTER, DEEPEN, PLUGBACK, OR ADD A ZONE

¹ Operator Name and Address CHEVRON USA INC 15 SMITH RD, MIDLAND, TX 79705		² OGRID Number 4323
		³ API Number 30-025-25689
⁴ Property Code 2597	⁵ Property Name R.E. COLE A	⁶ Well No. 18

⁷ Surface Location									
UI or lot no.	Section	Township	Range	Lot.Idn	Feet From The	North/South Line	Feet From The	East/West Line	County
M	16	22-S	37-E		990'	SOUTH	990'	WEST	LEA

⁸ Proposed Bottom Hole Location If Different From Surface									
UI or lot no.	Section	Township	Range	Lot.Idn	Feet From The	North/South Line	Feet From The	East/West Line	County
⁹ Proposed Pool 1 BLINEBRY OIL AND GAS					¹⁰ Proposed Pool 2				

¹¹ Work Type Code P	¹² WellType Code O	¹³ Rotary or C.T. ROTARY	¹⁴ Lease Type Code S	¹⁵ Ground Level Elevation
¹⁶ Multiple No	¹⁷ Proposed Depth 6665'	¹⁸ Formation BLINEBRY	¹⁹ Contractor	²⁰ Spud Date 12/15/2005

²¹ Proposed Casing and Cement Program

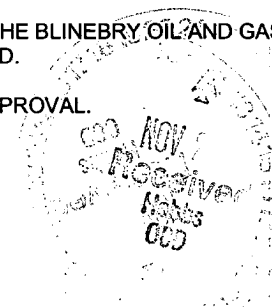
SIZE OF HOLE	SIZE OF CASING	WEIGHT PER FOOT	SETTING DEPTH	SACKS OF CEMENT	EST. TOP
NO CHANGE					

22 Describe the proposed program. If this application is to DEEPEN or PLUG BACK give the data on the present productive zone and proposed new productive zone. Describe the blowout prevention program, if any. Use additional sheets if necessary.

CHEVRON INTENDS TO RECOMPLETE THE SUBJECT WELL FROM THE DRINKARD TO THE BLINEBRY OIL AND GAS RESERVOIR. A PIT WILL NOT BE USED FOR THIS PLUGBACK. A STEEL FRAC TANK WILL BE UTILIZED.

THE CURRENT AND PROPOSED WELLBORE DIAGRAMS ARE ATTACHED FOR YOUR APPROVAL. THE INTENDED PROCEDURE IS ALSO ATTACHED.

Permit Expires 1 Year From Approval
Date Unless Drilling Underway
Plugback



²³ I hereby certify that the rules and regulations of the Oil Conservation Division have been complied with and that the information given above is true and complete to the best of my knowledge and belief.		OIL CONSERVATION DIVISION	
Signature <i>Denise Pinkerton</i>		Approved By: <i>[Signature]</i>	
Printed Name Denise Pinkerton		Title: DEC 02 2005 PETROLEUM ENGINEER	
Title Regulatory Specialist		Approval Date: Expiration Date:	
Date 11/21/2005		Conditions of Approval: Attached <input type="checkbox"/>	
Telephone 432-687-7375			

WELL DATA SHEET

FIELD: Drinkard

WELL NAME: RE Cole A #18

FORMATION: Drinkard

LOC: 990' FSL & 990' FWL
TOWNSHIP: 22S
RANGE: 37E
LOT: M

SEC: 16
COUNTY: Lea
STATE: NM

GE: 3386'
GL:

CURRENT STATUS:
API NO: 30-025-25689
REFNO: EP8553
CC#: U411600
WB# 044884

Surface Casing

8-5/8"

Set @ 1145' w/ 500 sx cmt
Circ cmt to surface

CURRENT

Spud Date:

Date of Completion: 11/27/77

Initial Completion: Drinkard

Tbg Detail:

See tbg detail for information.

KB

DV Tool @ 2975'

Perfs
6380'-6550'

Status
Drinkard Open

Production Casing

5-1/2", 15.5# K55

Set @ 6665' w/ 2100 sx cmt
Circ

TD 6665'
PBTD 6630'

WELL DATA SHEET

6660

FIELD: Blinebry Oil & Gas

WELL NAME: RE Cole A #18

FORMATION: Blinebry

LOC: 990' FSL & 990' FWL
TOWNSHIP: 22S
RANGE: 37E
LOT: M

SEC: 16
COUNTY: Lea
STATE: NM

GE: 3386'
GL:

CURRENT STATUS:
API NO: 30-025-25689
REFNO: EP8553
CC#: U411600
WB# 044884

Surface Casing

8-5/8"

Set @ 1145' w/ 500 sx cmt
Circ cmt to surface

Proposed

Spud Date:

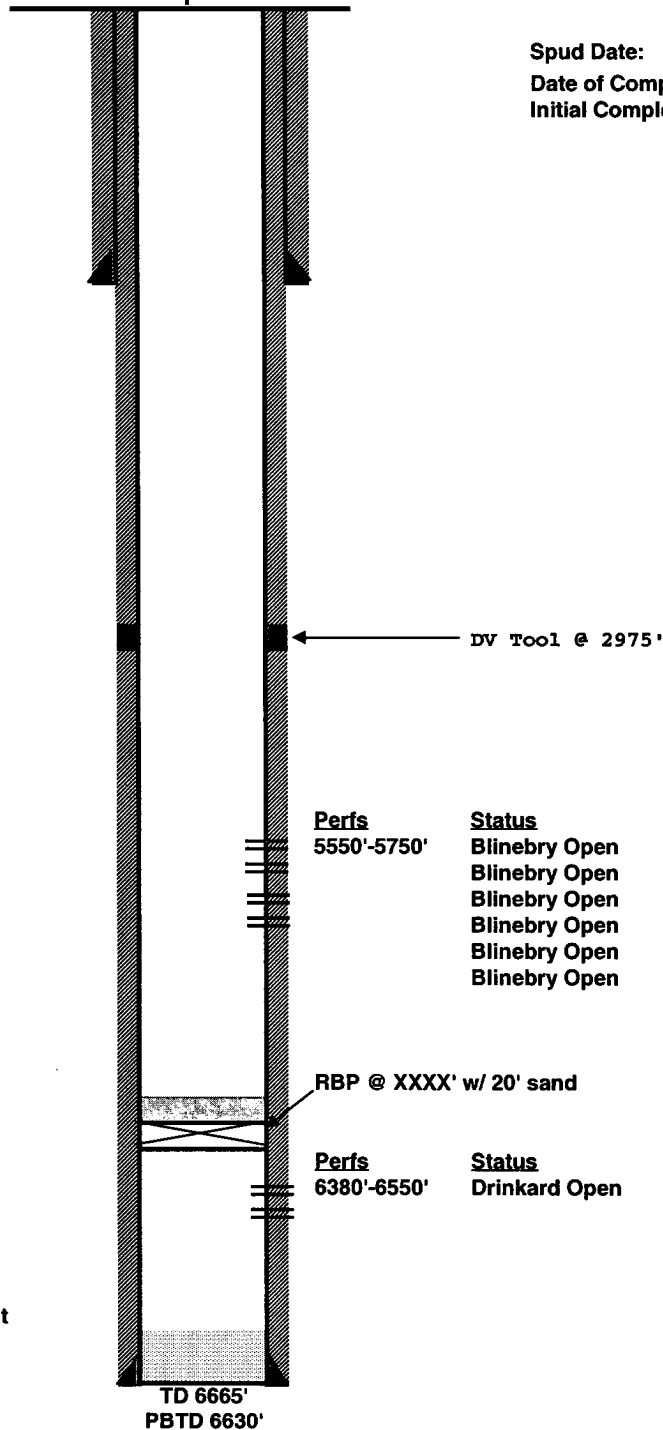
Date of Completion: 11/27/77

Initial Completion: Drinkard

Tbg Detail:

See tbg detail for information.

KB



Production Casing

5-1/2", 15.5# K55

Set @ 6665' w/ 2100 sx cmt
Circ

RE Cole A #18
API #30-025-25689
990' FSL & 990' FWL
S16, T22S, R37E
Blinebry Oil & Gas
Lea County, New Mexico

11/18/2005

PROCEDURE

Use 8.6 ppg brine water.

1. Displace flowline w/ fresh water. Have Field Specialist close valve at header. Pressure test line according to type. All polypipe (SDR7 and SDR11) will be tested to 100 psi. All steel lines will be tested to 500 psi. If a leak is found, contact Donnie Ives for repair/replacement. If tests good, bleed off pressure and open valve at header. Document this process in the morning report.
2. MIRU Key PU & RU. Install BOP's & EPA equipment. Test BOP when possible. POOH w/ production tbg (no Tbg Detail is provided, please see field file).
3. PU 4-3/4" bit & 2-7/8" WS. RIH to 6370'. POOH & LD bit.
4. RIH w/ 5-1/2" RBP & Pkr on 2-7/8" WS. Set RBP @ 6360' & spot 20' of sand on top. PU 1 jnt and set Pkr. Load and test csg to 500 psi. Load and test RBP to 1000 psi. Release pkr and POOH.
5. MIRU WL. RIH w/ GR/CPNL/CCL log and log wellbore starting at 6340' tying back to Welex's Compensated Density Log dated 11/12/77. Fax log to engineer for perf picking. RIH w/ GR/CBL/CCL log and log from 6340' to 100' above TOC tied back to previously run log. If log does not show adequate cement, contact engineer and discuss squeezing option.
6. Perforate picked intervals with 3-1/8" slick guns loaded w/ 2 JSPF, 120 degree phasing and 23 gram charges tied back to CPNL log run in previous step. RD Baker Atlas WL.
7. RIH w/ 5-1/2" treating packer w/ on/off tool and profile on 2-7/8" WS. Test 2-7/8" WS to 6000 psi while RIH. Set treating pkr @ +/- 5450'. Load and test BS to 500 psi.
8. MIRU DS. Acidize perms w/ 3,500 gals 15% NEFE HCl acid w/ mutual solvent at a max rate of 6 BPM & 6000 psi surface pressure dropping 275 1.3 SG 7/8" ball sealers spaced evenly throughout job. Displace acid w/ 8.6# brine to top perf. Record ISIP, 5, and 10 SIP. RD DS.
9. SI well for 2 hrs for acid to spend. RU swab and swab back load before SION if possible. Record volumes, pressures, & fluid levels. Discuss results with Engineering.
Note: It may be necessary to frac well and deviate from this procedure at that point.
10. Release pkr and POOH. LD pkr and WS.

11. PU & RIH w/ 2-7/8" production tbg & hang off as per ALS recommendation. NDBOP NUWH. RIH w/ pump and rods as per ALS.
12. RD Key PU & RR. Turn well over to production. Contact Lease Operator and inform them that the well is ready for operation.

Engineer - Keith Lopez

432-687-7120 Office

432-631-3281 Cell

432-661-6156 Home

DISTRICT I

P.O. Box 1980, Hobbs, NM 88241-1980

DISTRICT II

P.O. Box Drawer DD, Artesia, NM 88211-0719

DISTRICT III

1000 Rio Brazos Rd., Aztec, NM 87410

DISTRICT IV

P.O. Box 2088, Santa Fe, NM 87504-2088

State of New Mexico
Energy, Minerals and Natural Resources Department

OIL CONSERVATION DIVISION

P.O. Box 2088
 Santa Fe, New Mexico 87504-2088

Form C-102

Revised February 10, 1999

 Instructions on back
 Submit to Appropriate District Office

State Lease - 4 Copie

Fee Lease - 3 Copie

☐ AMENDED REPORT

WELL LOCATION AND ACREAGE DEDICATION PLAT

¹ API Number 30-025-25689	² Pool Code 6660	³ Pool Name BLINEBRY OIL AND GAS
⁴ Property Code	⁵ Property Name R.E. COLE A	⁶ Well No. 18
⁷ OGRID Number 4323	⁸ Operator Name CHEVRON USA INC	⁹ Elevation

¹⁰ Surface Location

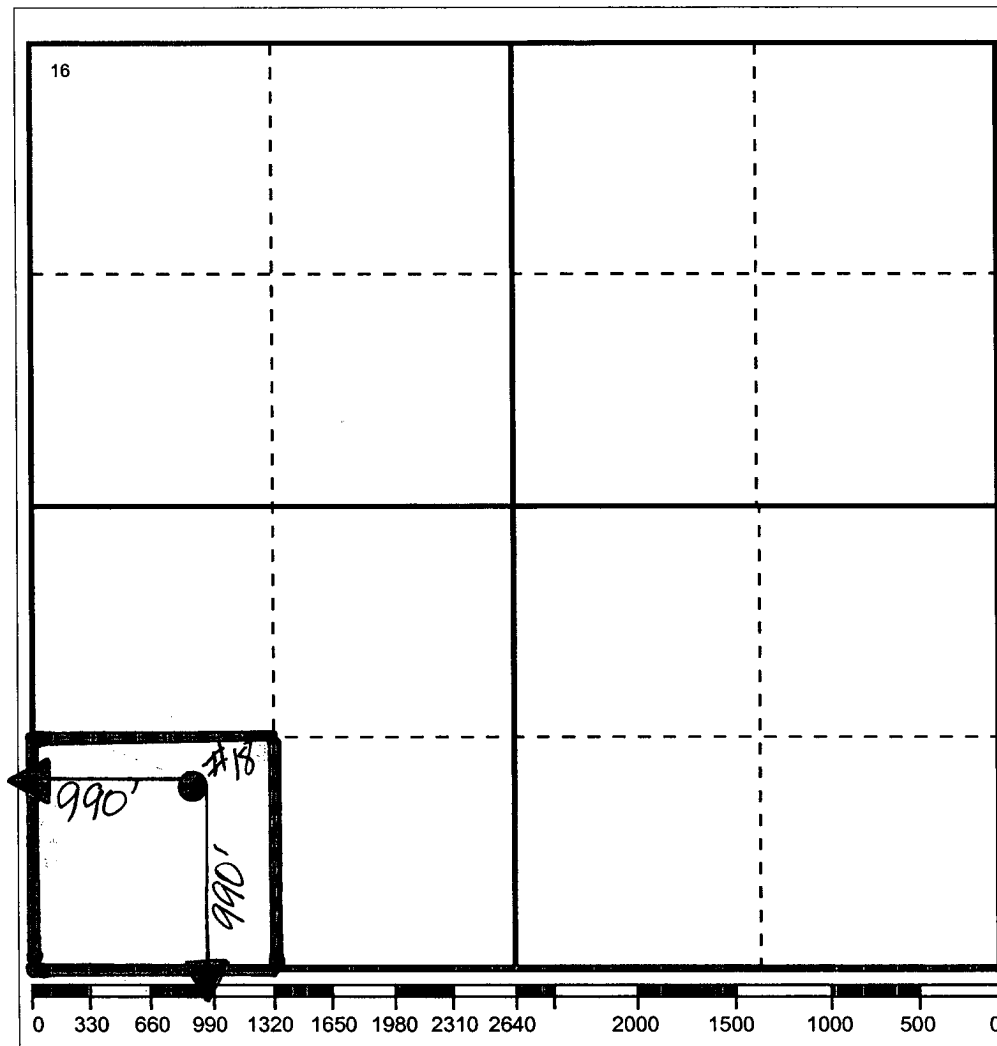
Ul or lot no	Section	Township	Range	Lot.Idn	Feet From The	North/South Line	Feet From The	East/West Line	County
M	16	22-S	37-E		990'	SOUTH	990'	WEST	LEA

¹¹ Bottom Hole Location If Different From Surface

Ul or lot no.	Section	Township	Range	Lot.Idn	Feet From The	North/South Line	Feet From The	East/West Line	County

¹² Dedicated Acre 40	¹³ Joint or Infill No	¹⁴ Consolidation Code	¹⁵ Order No.
------------------------------------	-------------------------------------	----------------------------------	-------------------------

NO ALLOWABLE WILL BE ASSIGNED TO THIS COMPLETION UNTIL ALL INTERESTS HAVE BEEN CONSOLIDATED
 OR A NON-STANDARD UNIT HAS BEEN APPROVED BY THE DIVISION



¹⁷ OPERATOR CERTIFICATION

I hereby certify that the information
 contained herein is true and complete to the
 best of my knowledge and belief

Signature

Printed Name

Denise Pinkerton

Positio

Regulatory Specialist

Date

11/21/2005

¹⁸ SURVEYOR CERTIFICATION

I hereby certify that the well location shown
 on this plat was plotted from field notes of
 actual surveys made by me or under my
 supervision, and that the same is true and
 correct to the best of my knowledge and
 belief.

Date Surveyed

 Signature & Seal of
 Professional Surveyor

Certificate No.