

submit 3 Copies To Appropriate District
Office
District I
1625 N. French Dr., Hobbs, NM 88240
District II
1301 W. Grand Ave., Artesia, NM 88210
District III
1000 Rio Brazos Rd., Aztec, NM 87410
District IV
1220 S. St. Francis Dr., Santa Fe, NM
87505

State of New Mexico
Energy, Minerals and Natural Resources

Form C-103
Revised March 25, 1999

OIL CONSERVATION DIVISION
1220 South St. Francis Dr.
Santa Fe, NM 87505

WELL API NO. 30-025-03456
5. Indicate Type of Lease STATE <input checked="" type="checkbox"/> FEE <input type="checkbox"/>
6. State Oil & Gas Lease No.

SUNDRY NOTICES AND REPORTS ON WELLS
(DO NOT USE THIS FORM FOR PROPOSALS TO DRILL OR TO DEEPEN OR PLUG BACK TO A
DIFFERENT RESERVOIR. USE "APPLICATION FOR PERMIT" (FORM C-101) FOR SUCH
PROPOSALS.)

1. Type of Well:

Oil Well ☒ Gas Well ☐ Other Shut In

2. Name of Operator
Citation Oil & Gas Corp.

7. Lease Name or Unit Agreement Name:
State A

8. Well No. 2Y

3. Address of Operator
P O Box 690688 Houston, Texas 77269

9. Pool name or Wildcat
Eumont Yates Seven River Queen Gas

4. Well Location

Unit Letter A: 990feet from the North line and 660feet from the East line

Section 12 Township 21S Range 35E NMPM County Lea

10. Elevation (Show whether DR, RKB, RT, GR, etc.)
3588'

11. Check Appropriate Box to Indicate Nature of Notice, Report or Other Data

NOTICE OF INTENTION TO:

PERFORM REMEDIAL WORK ☐ PLUG AND ABANDON ☐

TEMPORARILY ABANDON ☐ CHANGE PLANS ☐

PULL OR ALTER CASING ☐ MULTIPLE COMPLETION ☐

OTHER: Open additional perfs
☒

SUBSEQUENT REPORT OF:

REMEDIAL WORK ☐ ALTERING CASING ☐

COMMENCE DRILLING OPNS. ☐ PLUG AND ABANDONMENT ☐

CASING TEST AND CEMENT JOB ☐

OTHER: ☐

12. Describe prop used or completed operations. (Clearly state all pertinent details, and give pertinent dates, including estimated date of starting any proposed work). SEE RULE 1103. For Multiple Completions: Attach wellbore diagram of proposed completion or recompletion.

Citation Oil & Gas Corp. requests approval to open additional perf in the subject well and fracture stimulate well to enhance gas production per the attached procedure.



I hereby certify that the information above is true and complete to the best of my knowledge and belief.

SIGNATURE Bridget Lisenbe
Type or print name Bridget Lisenbe

TITLE Regulatory Assistant

DATE 01/10/06

Telephone No. 281-517-7309

(This space for State use)

APPROVED BY [Signature]
Conditions of approval, if any:

TITLE

DATE

PETROLEUM ENGINEER

JUN 25 2006

WORKOVER PROCEDURE

PROJECT: State A 2Y – OAP and Frac

DRILLED & COMPLETED: 5/55 LAST WO: 2/78 – OAP and Acidize

LOCATION: 990FNL and 660 FEL Sec 12 T21S – R35E

FIELD: Eumont COUNTY: Lea STATE: NM

TD: 3861' PBTD: 3853' DATUM: 3576' GL KB: 12'

CASING AND LINER RECORD

SIZE	WEIGHT	DEPTH	CEMENT	HOLE	TOC	REMARKS
8 5/8"	32#	303'	300 sx	12 1/4"	Surf	Circ
5 1/2"	15.5#	3860'	750 sx	7 7/8"	595' (est)	Calc w/ 75% XS

Producing Formation: Well SI. Queen (3798' – 3849'), sqz'd Queen (3785' – 3789')

Rods: None

Tubing: None

Note: Well SI.

PROCEDURE

- Notify NMOCD of planned work.
 - Use 2% KCl water for all water placed in wellbore.
 - RU gas buster pit for circulating w/ air unit.
 - Locate and rack 3650' 2 3/8" 4.7# J-55 eue 8rd production tbg.
 - Locate and rack 1 jnt 2 3/8" IPC tbg.
 - Locate and rack 3800' 2 7/8" 6.5# L-80 WS.
 - Locate and rack 3800' 3 1/2" 9.3# L-80 WS for frac treatment.
 - Locate and rack 3650' 3/4" "KD" rade rods.
 - Move in Parkersburg C 160 from State A2. Sheave for 6 spm in 54" hole.
1. MIRU PU. Kill csg w/ 2% KCL water if necessary.
 2. ND WH. NU BOP.
 3. RIH w/ 4 3/4" MT skirted bit and 2 7/8" SN on 2 7/8" 6.5# L-80 WS to 3760'. Tally in hole. POH w/bit.
 4. RIH w/ 2 7/8" WS and set CIBP at +/- 3760'. POH w/ 2 7/8" WS (Note: do not use WL set CIBP).
 5. RIH w/ 5 1/2" PKR and SN on 2 7/8" WS to isolate csg leak.
 6. Establish IR into csg hole and record PI rate, pressure and SI pressure.
 7. Rls pkr and POOH. RIH w/ CICR and set +/- 50' above HIC. Load annulus and pressure to 500 psi.
 8. Sqz HIC w/ Cmt slurry to be determined.
 9. Rls tbg from CICR and PUH 2 jnts. Rev tbg capacity. SI WOC 24 hrs. POOH w/ tbg.

10. RU rev unit and RIH w/ 4 3/4" MT Skirted bit, Bit Sub, 6 -3 1/2" DC's, XO Sub and SN on 2 7/8" WS to CICR. DO CICR and Cmt. Test SQZ to 250 psi. Diff test if req'd.
11. Load hole. RIH w/ GR/CCL/CBL logging tools. Run GR/CCL/CBL f/ PBTD to TOC or minimum run. POH w/ logging tools. Evaluate log for cmt top. RD WL.
12. RU WL w/ full lubricator. RIH w/ 4" csg gun. Correlate to Schlumberger Gamma Ray Neutron log dated 5/13/55. Perf Seven Rivers w/ 1 SPF as follows:

Perf Interval	Shots	Formation
3476' – 3500'	25	Seven Rivers
3505' – 3507'	3	Seven Rivers
3512' – 3522'	11	Seven Rivers
3526' – 3536'	11	Seven Rivers
3556' – 3596'	41	Seven Rivers
3616' – 3622'	7	Seven Rivers
3632' – 3636'	5	Seven Rivers
3644' – 3654'	11	Seven Rivers
3670' – 3684'	15	Seven Rivers
3698' – 3704'	7	Seven Rivers
Totals	136	

Total of 136 holes f/ (3476' to 3704'). POH w/ csg guns.

13. RIH and dump bail 2 sx cmt on CIBP @ +/- 3760' (10' cmt / sack). RD WL.
14. RU hydrotesters. RIH w/ 5 1/2" Arrowset 1X Frac Pkr w/ Dual Direction flapper valves, P-110 Inner Flow Tube (2.0"ID) and T-2 On/Off tool and 2 7/8" SN on 3 1/2" 9.3# L-80 WS. Test tbq to 7000 psi BS (69% of new rating). Set pkr @ +/- 3720'. Test CIBP to 2000 psi. Release Pkr and PUH to +/- 3704' (btm perf).
15. RU acid/frac company. Spot 250 gal 15% AS HCl acid across perfs. PUH w/ pkr to 3450' and reverse 5 bbls. Set pkr @ +/-3450'. Load csg w/ 2% KCl. Hold 500 psi on csg w/ pop off set at +/- 750 psi. Monitor csg throughout acid and frac job.
16. Acidize Seven Rivers (3476' – 3704') w/ 3200 gal 15% AS HCL acid at +/- 10-15 BPM (No Diverter). Frac Seven Rivers (3476' – 3704') as per service company recommendation using CO₂. Tag w/ IR-192 @ 0.5MC/1M# sand (74 day half-life). Record rates, max and min pressures and SIP's. (NOTE: Max pressure = 5000 psi. All sand tagged w/ IR-192.)
17. Rlse On-Off Tool and sting out of Pkr. Check for backflow. POH w/ Inner Flow Tube and On-Off tool.
18. RU WL w/ full lubricator. Pressure csg to 500 psi w/ 2% KCl. RIH w/ 4" csg gun. Correlate to Schlumberger Gamma Ray Neutron log dated 5/13/55. Perf Yates w/ 1 SPF as follows:

Perf Interval	Shots	Formation
3095' – 3113'	19	Yates
3133' – 3140'	8	Yates
3213' – 3250'	38	Yates
3253' – 3268'	16	Yates
3272' – 3290'	19	Yates
3318' – 3342'	25	Yates
3346' – 3364'	19	Yates
Totals	144	

Total of 144 holes f/ (3095' - 3364'). POH w/ csg guns.

19. RIH w/ 5 1/2" treating Pkr, 2 7/8" SN AND X-Over on 3 1/2" WS to +/- 3364'. Spot 300 gal 15% AS HCL acid across perms. PUH w/ pkr to 3050' and reverse 5 bbls. Set pkr @ +/-3050'.
20. Load csg w/ 2% KCl. Hold 500 psi on csg w/ pop off set at +/- 750 psi. Monitor csg throughout acid and frac job.
21. Acidize Yates (3095' – 3364') w/ 3400 gal 15% AS HCL acid at +/- 10-15 BPM (No Diverter). Frac Yates (3095' – 3364') as per service company recommendation using CO₂. Tag w/ SC-46 @ 0.5MC/1M# sand (84 day half-life). Record rates, max and min pressures and SIP's. (NOTE: Max pressure = 5000 psi. All sand tagged w/SC-46.)
22. Flow back well to pit as per service company recommendation.
23. Kill well w/ 2% KCL if required. Rlse Pkr. POH w/ 3 1/2" WS. LD Pkr and 3 1/2" WS.
24. RIH w/ frac Pkr retrieving head and 2 7/8" SN on 2 7/8" WS to frac Pkr. RU foam air unit and clean out sand to Pkr. RD foam air unit. Latch onto Pkr and release. POH w/ frac Pkr and 2 7/8" WS.
25. TIH w/ 4 3/4" MT skirted bit and 2 7/8" SN on 2 7/8" WS. Tag for fill. RU foam air unit and clean out frac sand to PBTD. CHC. RD foam air unit. POH w/ bit and LD 2 7/8" WS.
26. RU WL w/ Lubricator. Run After Frac Spectra (dual isotope) GR Log f/ 2,700' - PBTD. POH and RD WL.
27. Run 2 3/8" 4.7# J-55 eue 8rd production tbg string as follows:

QTY	ITEM	LENGTH	DEPTH
TUBING	KB		
114	Jts 2 3/8" 4.7# J-55 eue 8rd tbg	3534'	3546'
1	Jt 2 3/8" 4.7# J-55 eue 8rd IPC tbg	31'	3577'
1	2 3/8" SN	1'	3578'
1	2 3/8"x 4' TBG Sub	4'	3581'
1	Cavins D2301G Desander	20'	3601
2	2 Jts 2 3/8" BPMA	62'	3663'

28. RU Swab. Swab well until clean fluid is produced. RD Swab.
29. Run rod string as follows:

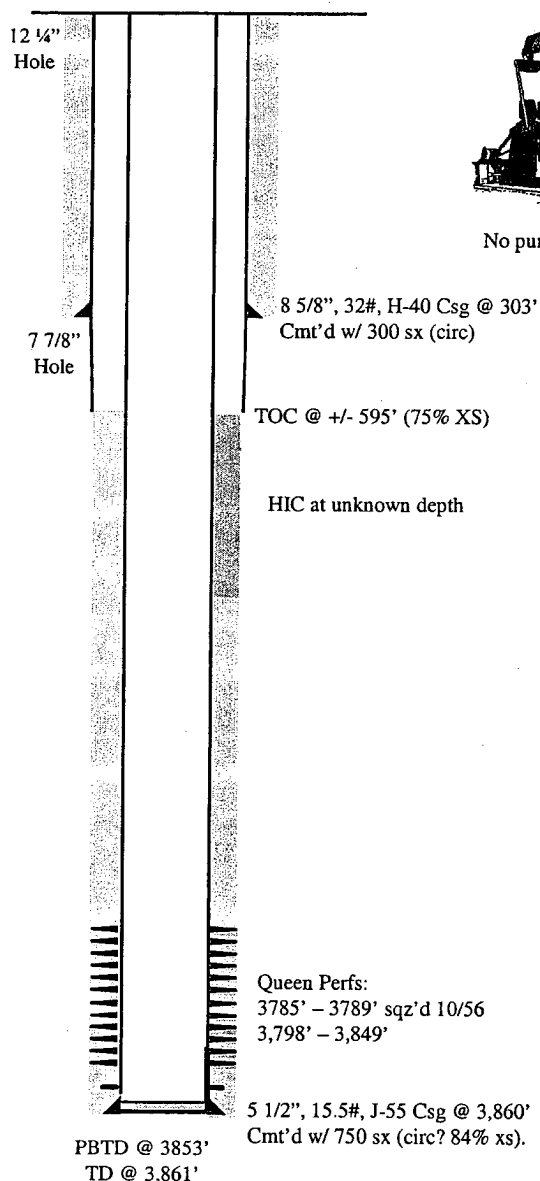
RODS			
1	1 1/4" x 16' PR w/ 1 1/2" x 10' Liner	16'	
1 Set	3/4" KD Rod Subs w/ SM couplings	10' (+/-)	
143	3/4" KD Rods w/ SM couplings	3575'	
1	3/4" KD Rod Sub w/ SM couplings	2'	
1	2" x 1 1/4" x 12' RHBC Pump	12'	

30. Load tbg w 2% KCl and pressure test pump. Space out and hang well on. Place pumping unit in 54" SL at +/- 6 SPM (Expected production rate +/- 45 BFPD @ 85% efficiency and 1 1/4" pump).
31. RD MO PU. Return well to production and place on test.

CITATION OIL AND GAS CORPORATION

CURRENT WELLBORE DIAGRAM AND INFORMATION

Well Name: State A 2Y **Field:** Eumont
Date: May 13, 2005 **Location:** 990' FNL and 660' FEL Section 12
County: Lea **State:** New Mexico



No pump jack

Surface: 990' FNL and 660' FEL, Section 12 T21S - R35E
 Lea county, NM
Completed: May 1955
Elevation: 3588' (DF)
KB: 12'

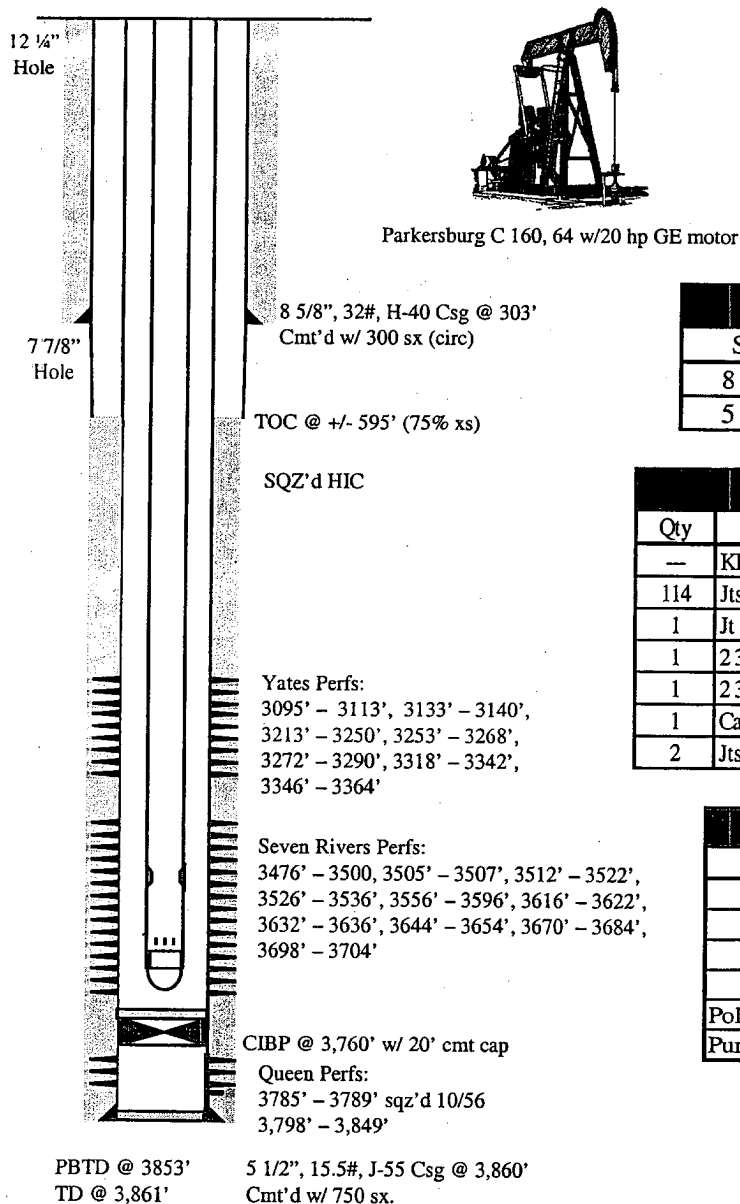
CASING DETAIL

Size	Weight	Grade	Depth
8 5/8"	32	H-40	Surf - 303
5 1/2"	15.5	J-55	Surf - 3860

CITATION OIL AND GAS CORPORATION

PROPOSED WELLBORE DIAGRAM AND INFORMATION

Well Name: State A 2Y **Field:** Eumont
Date: May 13, 2005 **Location:** 990' FNL and 660' FEL Section 12
County: Lea **State:** New Mexico



Parkersburg C 160, 64 w/20 hp GE motor

Surface: 990' FNL and 660' FEL,
Section 12 T21S - R35E
Lea County, NM
Completed: May 1955
Elevation: 3588' (DF)
KB: 12'

CASING DETAIL

Size	Weight	Grade	Depth
8 5/8"	32	H-40	Surf - 303
5 1/2"	15.5	J-55	Surf - 3860

TUBING DETAIL

Qty	Description	Length	Depth
—	KB	13	10
114	Jts 2 3/8", 4.7#, J-55 tbg	3534	3544
1	Jt 2 3/8", 4.7#, J-55 IPC tbg	31	3575
1	2 3/8" SN	1	3576
1	2 3/8" Tbg Sub	4	3580
1	Cavins D2301G Desander	20	3600
2	Jts 2 3/8" BPMA	62	3662

ROD DETAIL

Qty	Size	Type	Length
1 set	3/4"	KD Subs	+/- 10
143	3/4"	KD	3,575
1	3/4"	KD Sub	2
Polish Rod: 1 1/4" x 16' w/ 1 1/2" x 10' Liner			
Pump: 2" x 1 1/4" x 12'			