

Submit 3 Copies To Appropriate District  
Office  
District I  
1625 N. French Dr., Hobbs, NM 88240  
District II  
1301 W. Grand Ave., Artesia, NM 88210  
District III  
1000 Rio Brazos Rd., Aztec, NM 87410  
District IV  
1220 S. St. Francis Dr., Santa Fe, NM  
87505

State of New Mexico  
Energy, Minerals and Natural Resources

OIL CONSERVATION DIVISION  
1220 South St. Francis Dr.  
Santa Fe, NM 87505

Form C-103  
Revised March 25, 1999

<b>SUNDRY NOTICES AND REPORTS ON WELLS</b> (DO NOT USE THIS FORM FOR PROPOSALS TO DRILL OR TO DEEPEN OR PLUG BACK TO A DIFFERENT RESERVOIR. USE "APPLICATION FOR PERMIT" (FORM C-101) FOR SUCH PROPOSALS.)		WELL API NO. 30-025-08559
1. Type of Well: Oil Well <input checked="" type="checkbox"/> Gas Well <input type="checkbox"/> Other Shut In <input type="checkbox"/>		5. Indicate Type of Lease STATE <input checked="" type="checkbox"/> FEE <input type="checkbox"/>
2. Name of Operator Citation Oil & Gas Corp.		6. State Oil & Gas Lease No.
3. Address of Operator P O Box 690688 Houston, Texas 77269		7. Lease Name or Unit Agreement Name: State H
4. Well Location  Unit Letter H: 1980feet from the North line and 1260feet from the East line  Section 13 Township 21S Range 35E NMPM County Lea		8. Well No. 3
10. Elevation (Show whether DR, RKB, RT, GR, etc.) 3607		9. Pool name or Wildcat Eumont Yates Seven River Queen Gas

11. Check Appropriate Box to Indicate Nature of Notice, Report or Other Data

NOTICE OF INTENTION TO:

PERFORM REMEDIAL WORK ☐ PLUG AND ABANDON ☐  
TEMPORARILY ABANDON ☐ CHANGE PLANS ☐  
PULL OR ALTER CASING ☐ MULTIPLE COMPLETION ☐

OTHER: Open additional perfs  
☒

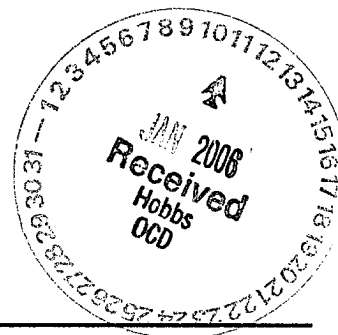
SUBSEQUENT REPORT OF:

REMEDIAL WORK ☐ ALTERING CASING ☐  
COMMENCE DRILLING OPNS. ☐ PLUG AND ABANDONMENT ☐  
CASING TEST AND CEMENT JOB ☐

OTHER: ☐

12. Describe prop used or completed operations. (Clearly state all pertinent details, and give pertinent dates, including estimated date of starting any proposed work). SEE RULE 1103. For Multiple Completions: Attach wellbore diagram of proposed completion or recompilation.

Citation Oil & Gas Corp. requests approval to open additional perf in the subject well and fracture stimulate to enhance gas production per the attached procedure.



I hereby certify that the information above is true and complete to the best of my knowledge and belief.

SIGNATURE Bridget Lisenbe TITLE Regulatory Assistant DATE 01/10/06  
Type or print name Bridget Lisenbe Telephone No. 281-517-7309

(This space for State use)

APPROVED BY [Signature] TITLE PETROLEUM ENGINEER DATE JAN 25 2006  
Conditions of approval, if any:

## WORKOVER PROCEDURE

PROJECT: State H3 – OAP and Frac

DRILLED & COMPLETED: 8/38 LAST WO: 8/79: acidize

LOCATION: 1908' FNL, 1260' FEL Sec 13, T21S – R35E

FIELD: Eumont COUNTY: Lea STATE: NM

TD: 3907' PBTD: Na DATUM: 3597' GL KB: 10'

### CASING AND LINER RECORD

SIZE	WEIGHT	DEPTH	CEMENT ENT	HOLE	TOC	REMARKS
8 5/8"	28#	1578'	600 sx	11"	Surf	Circ?
5 1/2"	14#	3767'	200	7 3/4"	2751'	Calc w/50% xs
OH	na	3767' - 3907'	na	4 3/4"	na	Open hole

Producing Formation: Well SI. Queen open hole: 3907' to 3767' (fill to 3828')

Rods: None

Tubing: None

Note: Well SI.

### PROCEDURE

- **Notify NMOCD of planned work.**
  - **Use 2% KCl water for all water placed in wellbore.**
  - **RU gas buster pit for circulating w/ air unit.**
  - **Locate and rack 3650' 2 3/8" 4.7# J-55 eue 8rd production tbg.**
  - **Locate and rack 1 joint 2 3/8" IPC tbg.**
  - **Locate and rack 3800' 2 7/8" 6.5# N-80 WS.**
  - **Locate and rack 3800' 3 1/2" 9.3# N-80 WS for fracture treating.**
  - **Move in pump jack from E. F. King #25 (Morgan C 160-200-74). Repair belt guard.**
  - **Locate and rack 3650' of "KD" 3 1/4" steel rods.**
1. MIRU PU. Kill w/ 2% KCL water if necessary.
  2. ND WH. NU BOP.
  3. RIH w/ 4 3/4" MT skirted bit and 2 7/8" SN on 2 7/8" 6.5# N-80 WS to 3767' (Top of OH). Tally in hole. POH w/bit.
  4. RIH w/ 2 7/8" WS and set CIBP @ +/- 3747'. POH 2 7/8" WS (Note: do not use WL set CIBP).
  5. Load hole w/ 2% KCL and PT to 500 psi. (NOTE: If csg does not test, RIH w/ pkr to isolate leak.)

6. RIH w/ GR/CBL/CCL. Run f/ 3750' to TOC or minimum run. POH w/ logging tools. Evaluate log for cmt top. RIH w/ GR/CNL. Run from 3750' to surface. POH w/logging tools. RD WL. Send GR/ Neutron log to Houston for evaluation / perf selection for Yates and Seven Rivers formations.
7. RU WL w/ full lubricator. RIH w/ 4" csg gun. Correlate to Neutron log. Perf stage 1 Yates / Seven Rivers w/ 1 SPF as recommended by reservoir group (tbd - to be determined). POH w/ csg guns.
8. RIH and dump bail 2 sx cmt on CIBP @ +/- 3747' (10' cmt / sack). RD WL.
9. RU hydrotesters. RIH w/ 5 1/2" Arrowset 1X Frac Pkr w/ Dual Direction flapper valves, P-110 Inner Flow Tube (2.0"ID) and T-2 On/Off tool and 2 7/8" SN on 3 1/2" 9.3# N-80 WS. Test tbg to 7000 psi AS **(69% of new rating)**. Set pkr @ +/- 3700'. Test CIBP to 2000 psi. Release Pkr and PUH to bottom perf (depth TBD).
10. RU acid/frac company. Spot (250 gal? - to be determined from reservoir group recommended perfs) 15% AS HCl acid across perfs. PUH w/ pkr to 25' above top perf of stage 1 (TBD) and reverse 5 bbls. Set pkr 25' above top perf in stage 1 (depth TBD). Load csg w/ 2% KCl. Hold 500 psi on csg w/ pop off set at +/- 750 psi. Monitor csg throughout acid and frac job.
11. Acidize Yates/ Seven Rivers (depths TBD) w/ (3300 gal? TBD) 15% AS HCL acid at +/- 10-15 BPM **(No Diverter)**. Frac Yates / Seven Rivers (depths TBD) as per service company recommendation using CO<sub>2</sub>. Tag w/ IR-192 @ 0.5MC/1M# sand (74 day half-life). Record rates, max and min pressures and SIP's. **(NOTE: Max pressure = 5000 psi. All sand tagged w/ IR-192.)**
12. Rlse On-Off Tool and sting out of Pkr. Check for backflow. POH w/ Inner Flow Tube and On-Off tool.
13. RU WL w/ full lubricator. Pressure csg to 500 psi w/ 2% KCl. RIH w/ 4" csg gun. Correlate to Gamma Ray Neutron log. Perf stage 2 Yates w/ 1 SPF as recommended by the reservoir group (TBD). POH w/ csg guns.
14. RIH w/ 5 1/2" treating Pkr, 2 7/8" SN AND X-Over on 3 1/2" WS to bottom perf of 2<sup>nd</sup> stage (depth TBD). Spot (275 gal? to be determined by reservoir groups perf recommendations) 15% AS HCl acid across perfs. PUH w/ pkr to 25' above top perf of 2<sup>nd</sup> stage (depth TBD) and reverse 5 bbls. Set pkr 25' above top perf of 2<sup>nd</sup> stage (depth TBD).
15. Load csg w/ 2% KCl. Hold 500 psi on csg w/ pop off set at +/- 750 psi. Monitor csg throughout acid and frac job.
16. Acidize Yates (depth TBD) w/(3300 gal? TBD) 15% AS HCL acid at +/- 10-15 BPM **(No Diverter)**. Frac Yates (depth TBD) as per service company recommendation using CO<sub>2</sub>. Tag w/ SC-46 @ 0.5MC/1M# sand (84 day half-life). Record rates, max and min pressures and SIP's. **(NOTE: Max pressure = 5000 psi. All sand tagged w/SC-46.)**
17. Flow back well to pit as per service company recommendation.
18. Kill well w/ 2% KCL if required. Rlse Pkr. POH w/ 3 1/2" WS. LD Pkr and 3 1/2" WS.
19. RIH w/ frac Pkr retrieving head and 2 7/8" SN on 2 7/8" WS to frac Pkr. RU foam air unit and clean out sand to Pkr. RD foam air unit. Latch onto Pkr and release. POH w/ frac Pkr and 2 7/8" WS.
20. TIH w/ 4 3/4" MT skirted bit and 2 7/8" SN on 2 7/8" WS. Tag for fill. RU foam air unit and clean out frac sand to PBTB. CHC. RD foam air unit. POH w/ bit and LD 2 7/8" WS.
21. RU WL w/ Lubricator. Run After Frac Spectra (dual isotope) GR Log f/ 2,700' - PBTB. POH and RD WL. (This log is optional and will depend on performance of fracture stimulations).

22. Run 2 3/8" 4.7# J-55 eue 8rd production tbg string as follows:

QTY	ITEM	LENGTH	DEPTH
<b>TUBING</b>	<b>KB</b>	10'	10'
113	Jts 2 3/8" 4.7# J-55 eue 8rd tbg	3503'	3513'
1	Jt 2 3/8" 4.7# J-55 eue 8rd IPC tbg	31'	3544'
1	2 3/8" SN	1'	3545'
1	2 3/8"x 4' TBG Sub	4'	3549'
1	Cavins D2301G Desander	20'	3569'
2	2 Jts 2 3/8" BPMA	62'	3631'

23. RU Swab. Swab well until clean fluid is produced. RD Swab.

24. Run rod string as follows:

<b>RODS</b>			
1	1 1/4" x 16' PR w/ 1 1/2" x 10' Liner	16'	16'
Set	3/4" KD Rod Subs w/ SM couplings	10' (+/-)	26'
141	3/4" KD Rods w/ SM couplings	3525'	3551'
1	3/4" KD Rod Sub w/ SM couplings	2'	3553'
1	2" x 1 1/4" x 12' RHBC Pump	12'	3563'

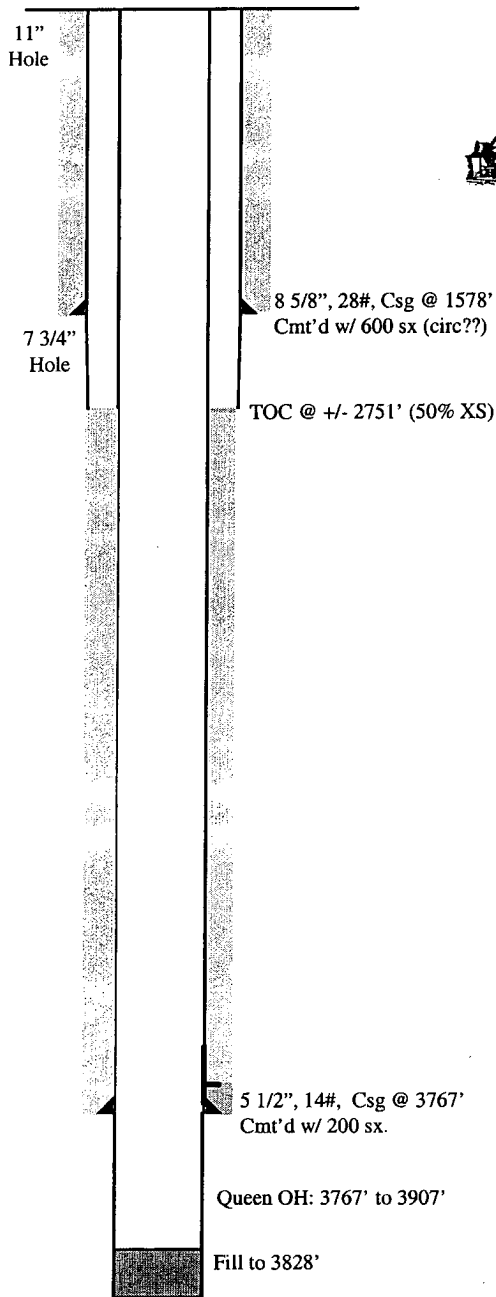
25. Load tbg w 2% KCl and pressure test pump. Space out and hang well on. Place pumping unit in 52" SL at +/- 6 SPM (Expected production rate +/- 43 BFPD @ 85% efficiency and 1 1/4" pump).

26. RD MO PU. Return well to production and place on test.

# CITATION OIL AND GAS CORPORATION

## CURRENT WELLBORE DIAGRAM AND INFORMATION

**Well Name:** State H #3      **Field:** Eumont  
**Date:** May 12, 2005      **Location:** 1980' FNL 1260' FEL Section 13  
**County:** Lea      **State:** New Mexico



No Unit

**Surface:** 1980' FNL and 1260' FEL  
 Sec 13, T21S R35E  
 Lea County, NM  
**Completed:** 8/4/1938  
**Elevation:** 3607 (DF)  
**KB:** 10'

### CASING DETAIL

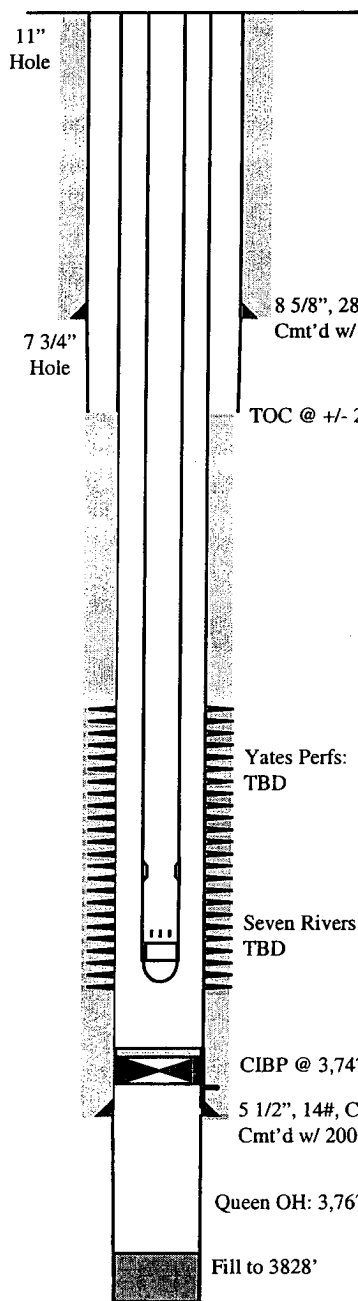
Size	Weight	Depth
8 5/8"	28	Surf - 1578'
5 1/2"	14	Surf - 3767'

TD @ 3,907'

# CITATION OIL AND GAS CORPORATION

## PROPOSED WELLBORE DIAGRAM AND INFORMATION

**Well Name:** State H #3      **Field:** Eumont  
**Date:** May 12, 2005      **Location:** 1980' FNL 1260' FEL Section 13  
**County:** Lea      **State:** New Mexico



Morgan C 160-200-74

**Surface:** 1980' FNL 1260' FEL Section 13,  
 T21S-R35E  
 Lea County, NM  
**Completed:** 8/4/1938  
**Elevation:** 3607 (DF)  
**KB:** 10'

### CASING DETAIL

Size	Weight	Depth
8 5/8"	28	Surf - 1578'
5 1/2"	14	Surf - 3767'

### TUBING DETAIL

Qty	Description	Length	Depth
---	KB	10	10
113	Jts 2 3/8", 4.7#, J-55 tbg	3503	3513
1	Jt 2 3/8", 4.7#, J-55 IPC tbg	31	3544
1	2 3/8" SN	1	3545
1	2 3/8" Tbg Sub	4	3549
1	Cavins D2301G Desander	20	3569
2	Jts 2 3/8" BPMA	62	3631

### ROD DETAIL

Qty	Size	Type	Length
1	3/4"	KD Subs	+/- 10
141	3/4"	KD	3,525
1	3/4"	KD Sub	2
Polish Rod: 1 1/4" x 16' w/ 1 1/2" x 10' Liner			
Pump: 2" x 1 1/4" x 12'			