

District I

1625 N. French Dr., Hobbs, NM 88240

District II

1301 W. Grand Avenue, Artesia, NM 88210

District III

1000 Rio Brazos Road, Aztec, NM 87410

District IV

1220 S. St. Francis Dr., Santa Fe, NM 87505

State of New Mexico
Energy Minerals and Natural Resources

Form C-101

May 27, 2004

Oil Conservation Division
1220 South St. Francis Dr.
Santa Fe, NM 87505

Submit to appropriate District Office

☐ AMENDED REPORT**APPLICATION FOR PERMIT TO DRILL, RE-ENTER, DEEPEN, PLUGBACK, OR ADD A ZONE**

| | | |
|---|--|--|
| ¹ Operator Name and Address Pride Energy Company P.O. Box 701950, Tulsa, OK 74170-1950 | | ² OGRID Number 151323 |
| ³ Property Code 34892 | ⁴ Property Name Paduca Delaware "16" State | ⁵ API Number 30 - 025- 37655 ⁶ Well No. 2 |
| ⁹ Proposed Pool 1 Paduca, Delaware | | ¹⁰ Proposed Pool 2 |

⁷ Surface Location

| UL or lot no. | Section | Township | Range | Lot Idn | Feet from the | North/South line | Feet from the | East/West line | County |
|---------------|---------|----------|-------|---------|---------------|------------------|---------------|----------------|--------|
| F | 16 | 25S | 32E | | 1650 | North | 1650 | West | Lea |

⁸ Proposed Bottom Hole Location If Different From Surface

| UL or lot no. | Section | Township | Range | Lot Idn | Feet from the | North/South line | Feet from the | East/West line | County |
|---------------|---------|----------|-------|---------|---------------|------------------|---------------|----------------|--------|
| | | | | | | | | | |

Additional Well Information

| | | | | |
|---|---------------------------------------|--|-------------------------------------|---|
| ¹¹ Work Type Code N | ¹² Well Type Code O | ¹³ Cable/Rotary R | ¹⁴ Lease Type Code S | ¹⁵ Ground Level Elevation 3427 |
| ¹⁶ Multiple No | ¹⁷ Proposed Depth 4,850 | ¹⁸ Formation Delaware | ¹⁹ Contractor Unknown | ²⁰ Spud Date ASAP |
| Depth to Groundwater 290' | | Distance from nearest fresh water well 3 miles | | Distance from nearest surface water 20+ miles |
| Pit: Liner: Synthetic <input checked="" type="checkbox"/> 12_mils thick Clay <input type="checkbox"/> Pit Volume: 1,500_bbls Drilling Method: <input checked="" type="checkbox"/> Fresh Water <input checked="" type="checkbox"/> Brine <input checked="" type="checkbox"/> Diesel/Oil-based <input type="checkbox"/> Gas/Air <input type="checkbox"/> Closed-Loop System <input type="checkbox"/> | | | | |

²¹ Proposed Casing and Cement Program

| Hole Size | Casing Size | Casing weight/foot | Setting Depth | Sacks of Cement | Estimated TOC |
|-----------|-------------|--------------------|---------------|-----------------|---------------|
| 12 1/4" | 8 5/8" | 24# | 350' | 250 | Surface |
| 7 7/8" | 5 1/2" | 15.50# | 4,850 | 800 | Surface |
| | | | | | |
| | | | | | |

²² Describe the proposed program. If this application is to DEEPEN or PLUG BACK, give the data on the present productive zone and proposed new productive zone. Describe the blowout prevention program, if any. Use additional sheets if necessary.

Drill 12.25" hole to 350', run 350' of 8.625" surface casing & cement to surface.
 Drill 7.875" hole to 4,850', run logs, run 5.50" production casing & cement, circulate to surface.
 Perforate, acidize, production test
 BOP: 11" Hydraulic Dual Ram (10 M), Blind & Pipe

²³ I hereby certify that the information given above is true and complete to the best of my knowledge and belief. I further certify that the drilling pit will be constructed according to NMOCD guidelines ☒, a general permit ☐, or an (attached) alternative OCD-approved plan ☐.

Printed name: John W. Pride

Title: Pres. of Pride Oil & Gas Co., Inc., as General Partner of Pride Energy Company

E-mail Address: johnp@pride-energy.com

Date: 1/19/06

Phone: 918-524-9200

OIL CONSERVATION DIVISION

Approved by:

Title:

PETROLEUM ENGINEER

Approval Date:

JAN 25 2006

Expiration Date:

Conditions of Approval Attached ☐

DISTRICT I
1825 N. French St., Hobbs, NM 88240

DISTRICT II
611 South First, Artesia, NM 88210

DISTRICT III
1000 Rio Brazos Rd., Aztec, NM 87410

DISTRICT IV
2040 South Pacheco, Santa Fe, NM 87505

State of New Mexico
Energy, Minerals and Natural Resources Department

Form C-102
Revised March 17, 1999

Submit to Appropriate District Office
State Lease - 4 Copies
Fee Lease - 3 Copies

OIL CONSERVATION DIVISION

2040 South Pacheco
Santa Fe, New Mexico 87504-2088

☐ AMENDED REPORT

WELL LOCATION AND ACREAGE DEDICATION PLAT

| | | |
|----------------------------|---|-------------------------------|
| API Number 30-025-37655 | Pool Code 49460 | Pool Name Paduca; Delaware |
| Property Code 34892 | Property Name PADUCA DELAWARE "16" STATE | Well Number 2 |
| OGED No. 151323 | Operator Name PRIDE ENERGY COMPANY | Elevation 3427' |

Surface Location

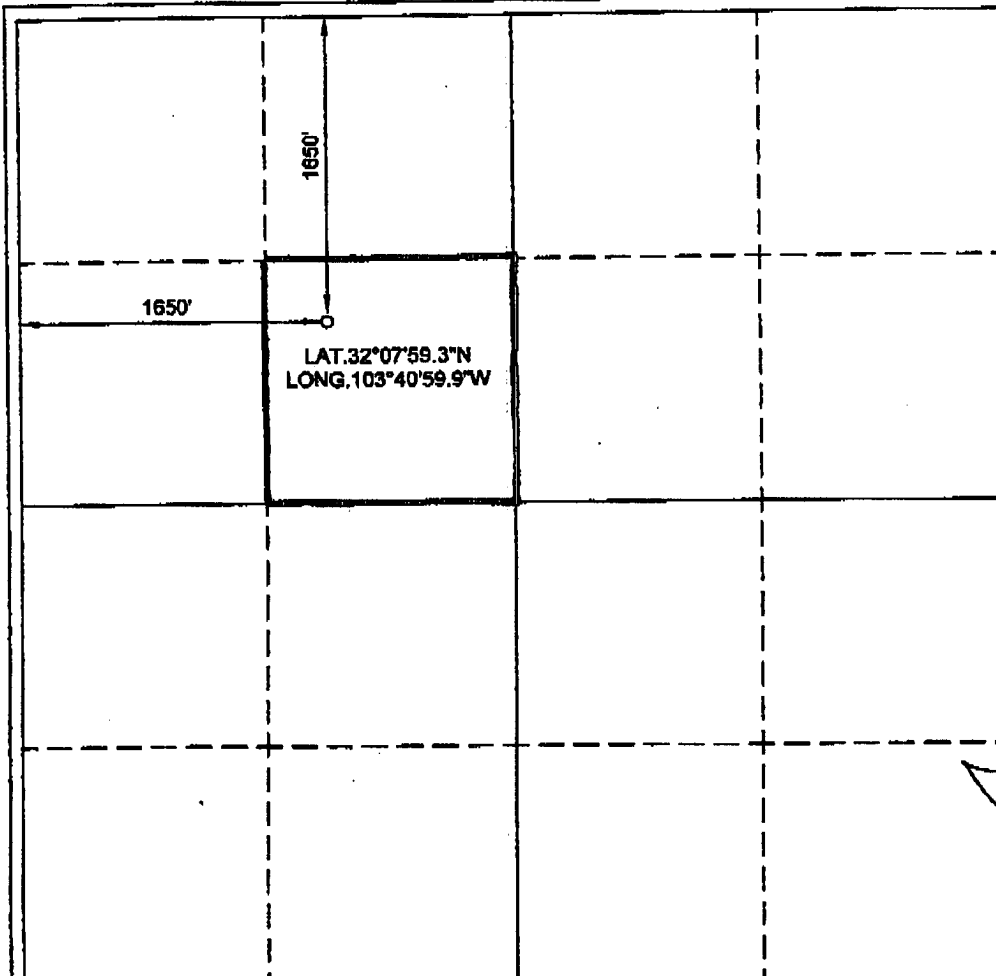
| UL or lot No. | Section | Township | Range | Lot 1/4 | Feet from the | North/South line | Feet from the | East/West line | County |
|---------------|---------|----------|-------|---------|---------------|------------------|---------------|----------------|--------|
| F | 16 | 25-S | 32-E | | 1650 | NORTH | 1650 | WEST | LEA |

Bottom Hole Location If Different From Surface

| UL or lot No. | Section | Township | Range | Lot 1/4 | Feet from the | North/South line | Feet from the | East/West line | County |
|---------------|---------|----------|-------|---------|---------------|------------------|---------------|----------------|--------|
| | | | | | | | | | |

| | | | |
|-----------------------|-----------------|--------------------|-----------|
| Dedicated Acres 40 | Joint or Infill | Consolidation Code | Order No. |
|-----------------------|-----------------|--------------------|-----------|

NO ALLOWABLE WILL BE ASSIGNED TO THIS COMPLETION UNTIL ALL INTERESTS HAVE BEEN CONSOLIDATED
OR A NON-STANDARD UNIT HAS BEEN APPROVED BY THE DIVISION



OPERATOR CERTIFICATION

I hereby certify that the information contained herein is true and complete to the best of my knowledge and belief.

John W. Pride
Signature

John W. Pride
Printed Name

Pres. Pride Oil & Gas Co.,
LLC Inc., as Gen. Partner
of Pride Energy Company
Date January 19, 2006

SURVEYOR CERTIFICATION

I hereby certify that the well location shown on this plat was plotted from field notes of actual surveys made by me or under my supervision, and that the same is true and correct to the best of my belief.

JANUARY 9, 2006

| | |
|---------------|-----------------------|
| Date Surveyed | Signature of Surveyor |
| | <i>Gary L. Jones</i> |
| | Professional Surveyor |
| | 7977 |
| | W.O. No. 6116 |
| Certified by | Gary L. Jones |
| | 7977 |

DISTRICT I
1625 N. French Dr., Hobbs, NM 88240

DISTRICT II
811 South First, Artesia, NM 88210

DISTRICT III
1000 Rio Brazos Rd., Artec, NM 87410

DISTRICT IV
2040 South Pacheco, Santa Fe, NM 87505

State of New Mexico
Energy, Minerals and Natural Resources Department

Form C-102
Revised March 17, 1999

Submit to Appropriate District Office
State Lease - 4 Copies
Fee Lease - 3 Copies

OIL CONSERVATION DIVISION

2040 South Pacheco
Santa Fe, New Mexico 87504-2088

☐ AMENDED REPORT

WELL LOCATION AND ACREAGE DEDICATION PLAT

| | | |
|-----------------------------------|---|-------------------------------|
| API Number 30-025 37655 | Pool Code 49460 | Pool Name Paduca; Delaware |
| Property Code 34892 | Property Name PADUCA DELAWARE "16" STATE | Well Number 2 |
| OGRID No. 151323 | Operator Name PRIDE ENERGY COMPANY | Elevation 3427' |

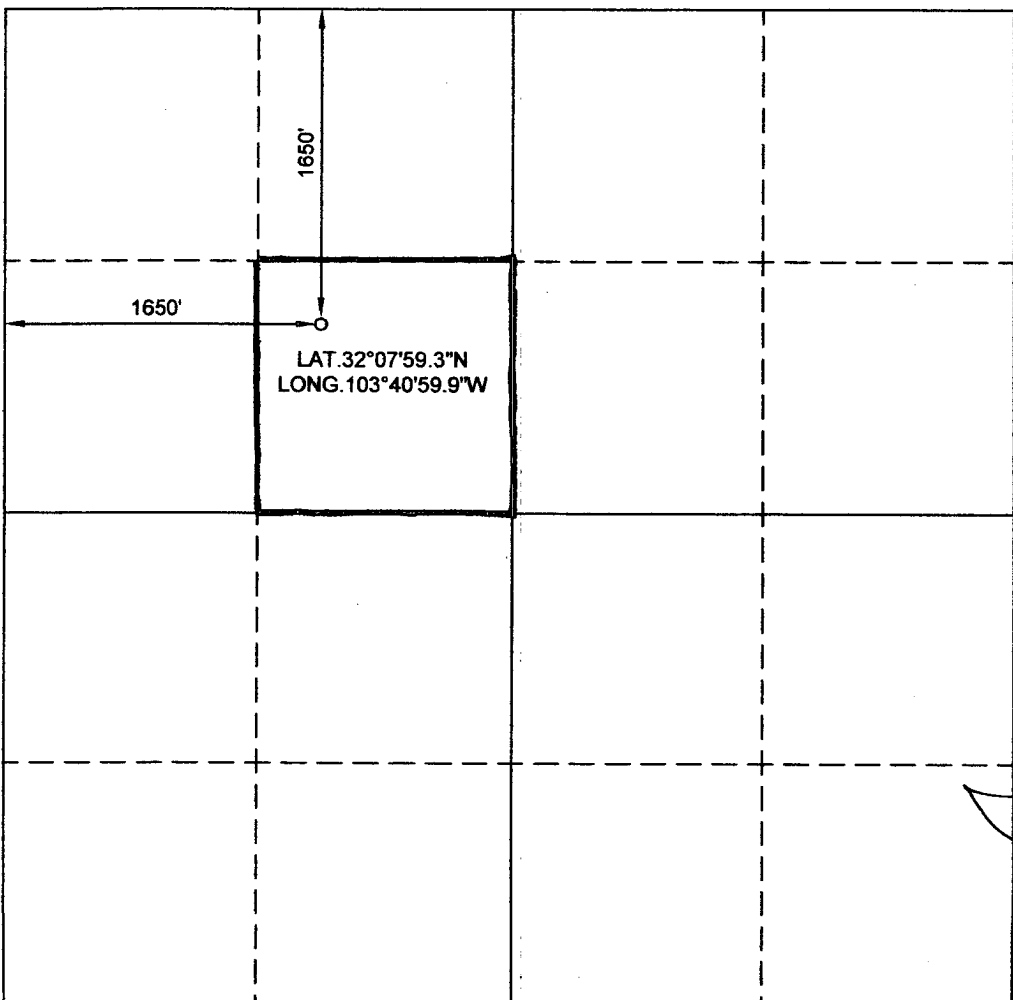
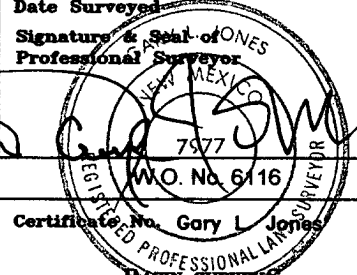
Surface Location

| UL or lot No. | Section | Township | Range | Lot Idn | Feet from the | North/South line | Feet from the | East/West line | County |
|---------------|---------|----------|-------|---------|---------------|------------------|---------------|----------------|--------|
| F | 16 | 25-S | 32-E | | 1650 | NORTH | 1650 | WEST | LEA |

Bottom Hole Location If Different From Surface

| UL or lot No. | Section | Township | Range | Lot Idn | Feet from the | North/South line | Feet from the | East/West line | County |
|-----------------------|-----------------|--------------------|-----------|---------|---------------|------------------|---------------|----------------|--------|
| | | | | | | | | | |
| Dedicated Acres 40 | Joint or Infill | Consolidation Code | Order No. | | | | | | |

NO ALLOWABLE WILL BE ASSIGNED TO THIS COMPLETION UNTIL ALL INTERESTS HAVE BEEN CONSOLIDATED
OR A NON-STANDARD UNIT HAS BEEN APPROVED BY THE DIVISION

| | |
|--|--|
|  | <p>OPERATOR CERTIFICATION</p> <p>I hereby certify the the information contained herein is true and complete to the best of my knowledge and belief.</p> <p>Signature <u>John W. Pride</u> Printed Name <u>Pres. Pride Oil & Gas Co.,</u> <u>Title Inc., as Gen. Partner</u> <u>of Pride Energy Company</u> Date <u>January 19, 2006</u></p> <p>SURVEYOR CERTIFICATION</p> <p>I hereby certify that the well location shown on this plat was plotted from field notes of actual surveys made by me or under my supervision, and that the same is true and correct to the best of my belief.</p> <p>JANUARY 9, 2006</p> <p>Date Surveyed Signature & Seal of Professional Surveyor  Certificate No. <u>Gary L. Jones</u> 7977 BASIN SURVEYS</p> |
|--|--|

Proposed Completion

KB: 0.0'

DF: 0.0'

GL: 3427.0'

Datum: 3427.0' above GL

Paduca Delaware 16 State #2

John Pride 12/16/05

API # 30-025

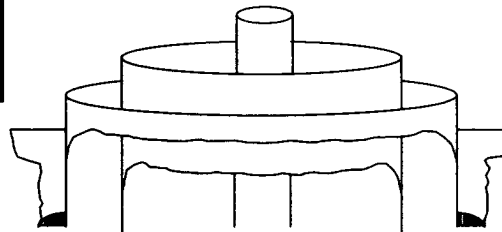
1650' FNL & 1650' FWL

in Unit Letter F

Sec 16-T25S-R32E

Lea Co., NM

8 $\frac{5}{8}$ " cs'g. 24#, 350' cmt. w/ 250
sx circ. to surf. in 12 $\frac{1}{4}$ " hole

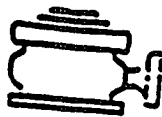


perf. Delaware

PBTD = '

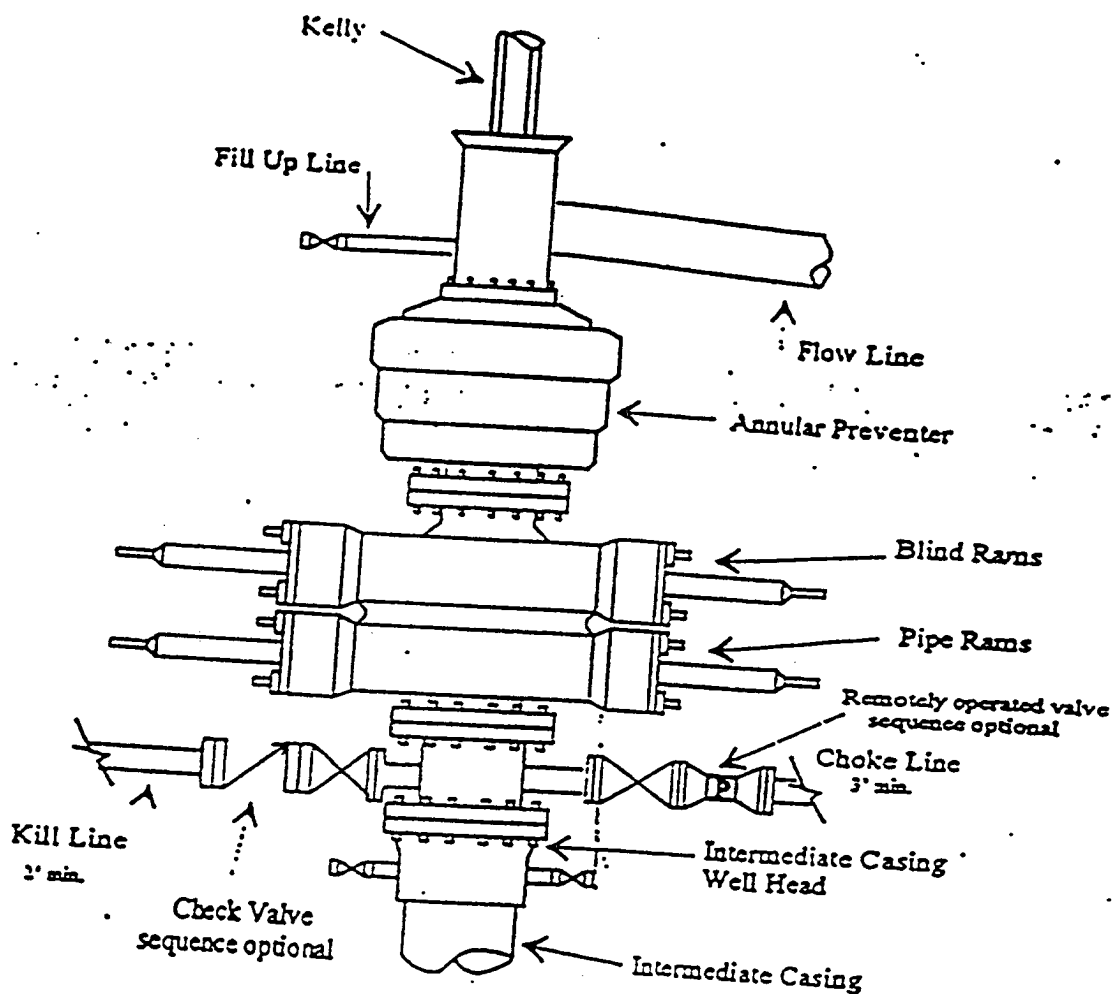
5 $\frac{1}{2}$ " cs'g. 17#, 4,850' cmt. w/
800 sx circ. to surf. in 7 $\frac{7}{8}$ " hole

TD = 4,850'



PRIDE ENERGY COMPANY
Typical /9000 psi Pressure System
Schematic
Annular with Double Ram Preventer Stack

BOP-4



Typical /9000 psi choke manifold assembly with at least these minimum features

