

DISTRICT I
1625 N. FRENCH DR., HOBBS, NM 88240

DISTRICT II
1301 W. GRAND AVENUE, ARTESIA, NM 88210

DISTRICT III
1000 Rio Brazos Rd., Aztec, NM 87410

DISTRICT IV
1220 S. ST. FRANCIS DR., SANTA FE, NM 87505

State of New Mexico
Energy, Minerals and Natural Resources Department

OIL CONSERVATION DIVISION
1220 SOUTH ST. FRANCIS DR.
Santa Fe, New Mexico 87505

Form C-102
Revised JUNE 10, 2003
Submit to Appropriate District Office
State Lease - 4 Copies
Fee Lease - 3 Copies

WELL LOCATION AND ACREAGE DEDICATION PLAT

☐ AMENDED REPORT

API Number 30-025-37387	Pool Code 19190	Pool Name Drinkard (Oil)
Property Code 029846	Property Name SANTA RITA	Well Number 3
OGRID No. 013300	Operator Name LEWIS B. BURLESON INC.	Elevation 3347'

Surface Location

UL or lot No.	Section	Township	Range	Lot Idn	Feet from the	North/South line	Feet from the	East/West line	County
N	22	22-S	37-E		790	SOUTH	1650	WEST	LEA

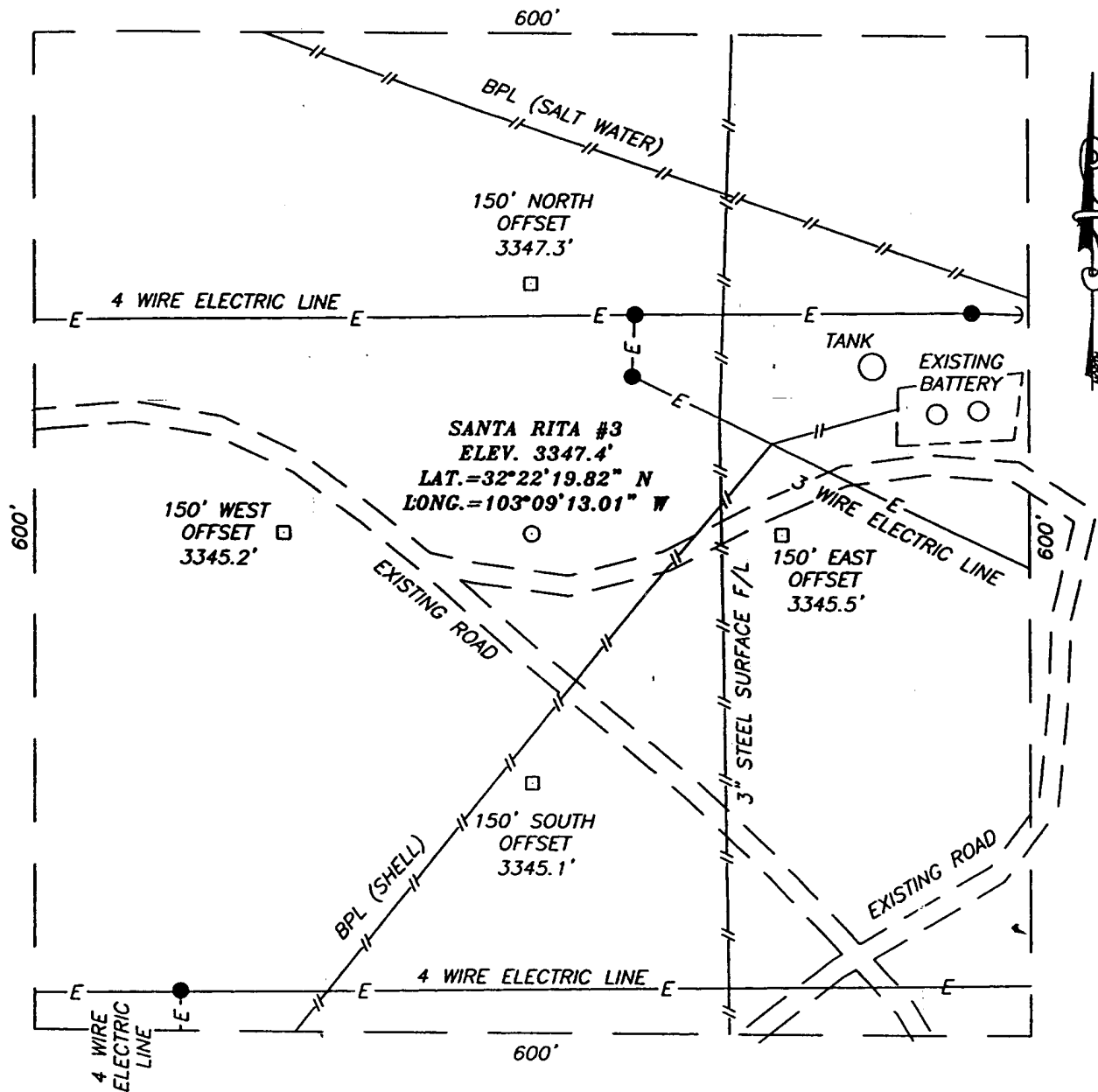
Bottom Hole Location If Different From Surface

UL or lot No.	Section	Township	Range	Lot Idn	Feet from the	North/South line	Feet from the	East/West line	County
Dedicated Acres	Joint or Infill	Consolidation Code	Order No.						

NO ALLOWABLE WILL BE ASSIGNED TO THIS COMPLETION UNTIL ALL INTERESTS HAVE BEEN CONSOLIDATED
OR A NON-STANDARD UNIT HAS BEEN APPROVED BY THE DIVISION

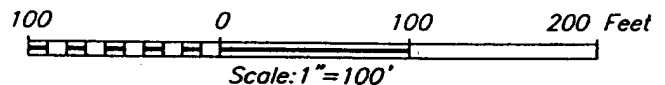
	<p>OPERATOR CERTIFICATION</p> <p>I hereby certify the the information contained herein is true and complete to the best of my knowledge and belief.</p> <p></p> <p>Signature</p> <p>Steven L. Burleson</p> <p>Printed Name</p> <p>Vice-President</p> <p>Title</p> <p>1/12/2006</p> <p>Date</p> <p>SURVEYOR CERTIFICATION</p> <p>I hereby certify that the well location shown on this plat was plotted from field notes of actual surveys made by me or under my supervision, and that the same is true and correct to the best of my belief.</p> <p>JULY 6, 2005</p> <p>Date Surveyed</p> <p></p> <p>Signature & Seal of Professional Surveyor</p> <p>GARY EIDSON</p> <p>NEW MEXICO</p> <p>2/11/05</p> <p>05.11.1047</p> <p>Certificate No. GARY EIDSON 12841</p>
--	--

SECTION 22, TOWNSHIP 22 SOUTH, RANGE 37 EAST, N.M.P.M.,
LEA COUNTY, NEW MEXICO



DIRECTIONS TO LOCATION

FROM THE INTERSECTION OF ST. HWY. #207 AND DELAWARE BASIN RD (CO. RD. E-21). THIS INTERSECTION IS APPROX. 2.5 MILES SOUTH OF TEXAS ST. IN EUNICE, NM. GO SOUTH ON ST. HWY. #207 APPROX. 1.9 MILES. TURN LEFT (EAST) AND GO APPROX. 0.3 MILES. THIS LOCATION IS APPROX. 55' NORTH OF ROAD.



LEWIS B. BURLESON INC.

SANTA RITA #3 WELL
 LOCATED 790 FEET FROM THE SOUTH LINE
 AND 1650 FEET FROM THE WEST LINE OF SECTION 22,
 TOWNSHIP 22 SOUTH, RANGE 37 EAST, N.M.P.M.,
 LEA COUNTY, NEW MEXICO.

Survey Date: 07/06/05	Sheet 1 of 1 Sheets
W.O. Number: 05.11.1047	Dr By: DEL
Date: 07/08/05	Rev 1:N/A
Disk: CD#4	05111047
	Scale: 1"=100'

PROVIDING SURVEYING SERVICES
 SINCE 1948
JOHN WEST SURVEYING COMPANY
 412 N. DAL PASO
 HOBBS, N.M. 88240
 (505) 383-3117