

State of New Mexico
Energy, Minerals & Natural Resources

Form C-101
May 27, 2004

District I
1625 N. French Dr., Hobbs, NM 88240
District II
1301 W. Grand Avenue, Artesia, NM 88210
District III
1000 Rio Brazos Rd., Aztec, NM 87410
District IV
1220 S. St. Francis Dr., Santa Fe, NM 87505

Oil Conservation Division
1220 S. St. Francis Dr.
Santa Fe, NM 87505

Submit to appropriate District Office

☐ AMENDED REPORT

APPLICATION FOR PERMIT TO DRILL, RE-ENTER, DEEPEN, PLUGBACK, OR ADD A ZONE

¹ Operator Name and Address Occidental Permian Limited Partnership P.O. Box 50250 Midland, TX 79710-0250		² OGRID Number 157984
⁴ Property Code 34204	⁵ Property Name OPL Twin Berry State	³ API Number 30-025-37683
⁹ Proposed Pool 1 Vacuum Morrow 86840		⁶ Well No. 2
¹⁰ Proposed Pool 2		

Surface Location

UL or lot no.	Section	Township	Range	Lot. Idn	Feet from the	North/South Line	Feet from the	East/West line	County
D	8	18S	34E		800	north	660	west	Lea

Proposed Bottom Hole Location If Different From Surface

UL or lot no.	Section	Township	Range	Lot. Idn	Feet from the	North/South Line	Feet from the	East/West line	County

Additional Well Location

¹¹ Work Type Code N	¹² Well Type Code G	¹³ Cable/Rotary R	¹⁴ Lease Type Code S - E-07990-3	¹⁵ Ground Level Elevation 4070'
¹⁶ Multiple No	¹⁷ Proposed Depth 13800'	¹⁸ Formation Morrow	¹⁹ Contractor N/A	²⁰ Spud Date 6/1/06
Depth to ground water *		Distance from nearest fresh water well		Distance from nearest surface water
Pit: Liner: Synthetic <input type="checkbox"/> _____ mils thick Clay <input type="checkbox"/> Pit Volume _____ bbls Drilling Method: Closed-Loop System <input type="checkbox"/> Fresh Water <input type="checkbox"/> Brine <input type="checkbox"/> Diesel/Oil-based <input type="checkbox"/> Gas/Air <input type="checkbox"/>				

Proposed Casing and Cement Program

Hole Size	Casing Size	Casing weight/foot	Setting Depth	Sacks of Cement	Estimated TOC
17-1/2"	13-3/8"	48#	400'	450sx	surface-circulate
12-1/4"	9-5/8"	36#	5900'	1600sx	surface-circulate
8-3/4"	7"	26#	11800'	800sx	Est TOC-5700'
6-1/4"	4-1/2"	11.6#	11600-13800'	250sx	Est TOC-11600'

²² Describe the proposed program. If this application is to DEEPEN or PLUG BACK, give the data on the present productive zone and proposed new productive zone. Describe the blowout prevention program, if any. Use additional sheets if necessary.

See Attachment

* C-144 Attached

²³ I hereby certify that the information given above is true and complete to the best of my knowledge and belief. I further certify that the drilling pit will be constructed according to NMOCD guidelines <input type="checkbox"/> a general permit <input type="checkbox"/> , or an (attached) alternative OCD-approved plan <input type="checkbox"/> . Signature: <i>David Stewart</i>		OIL CONSERVATION DIVISION	
Printed name: David Stewart			
Title: Sr. Regulatory Analyst		Approved by: <i>[Signature]</i> PETROLEUM ENGINEER	
E-mail Address: david.stewart@oxy.com		Title: FEB 06 2006	
Date: 2/1/06		Approval Date: _____ Expiration Date: _____	
Phone: 432-685-5717		Conditions of Approval: Attached <input type="checkbox"/>	

State of New Mexico

DISTRICT I

1625 N. FRENCH DR., HOBBS, NM 88240

Energy, Minerals and Natural Resources Department

DISTRICT II

1301 W. GRAND AVENUE, ARTESIA, NM 88210

DISTRICT III

1000 Rio Brazos Rd., Aztec, NM 87410

DISTRICT IV

1220 S. ST. FRANCIS DR., SANTA FE, NM 87505

OIL CONSERVATION DIVISION

1220 SOUTH ST. FRANCIS DR.
Santa Fe, New Mexico 87505

Form C-102

Revised JUNE 10, 2003

Submit to Appropriate District Office

State Lease - 4 Copies

Fee Lease - 3 Copies

WELL LOCATION AND ACREAGE DEDICATION PLAT

☐ AMENDED REPORT

API Number 30-025- 37683	Pool Code 86840	Pool Name Vacuum Morrow
Property Code 34204	Property Name OPL TWIN BERRY STATE	Well Number 2
OGRID No. 157984	Operator Name OCCIDENTAL PERMIAN, LTD.	Elevation 4070'

Surface Location

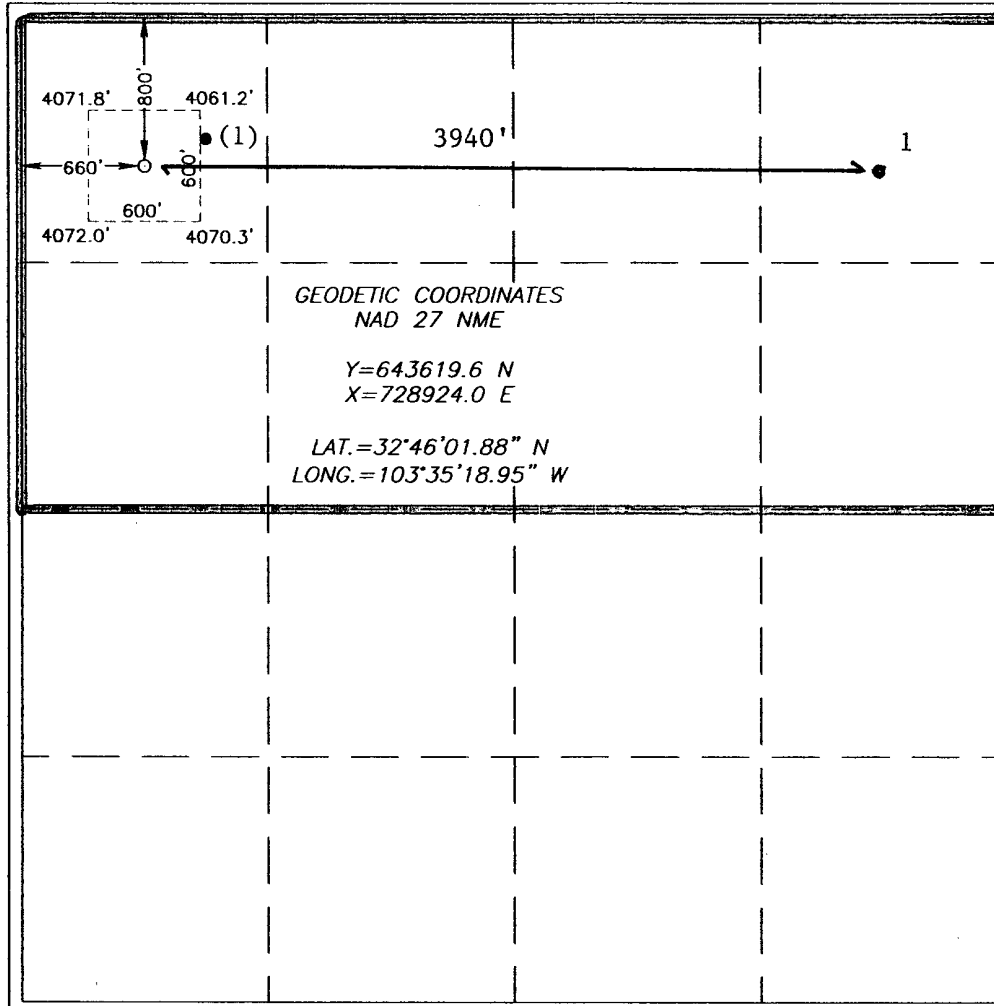
UL or lot No.	Section	Township	Range	Lot Idn	Feet from the	North/South line	Feet from the	East/West line	County
D	8	18-S	34-E		800	NORTH	660	WEST	LEA

Bottom Hole Location If Different From Surface

UL or lot No.	Section	Township	Range	Lot Idn	Feet from the	North/South line	Feet from the	East/West line	County

Dedicated Acres	Joint or Infill	Consolidation Code	Order No.
320	Y		

NO ALLOWABLE WILL BE ASSIGNED TO THIS COMPLETION UNTIL ALL INTERESTS HAVE BEEN CONSOLIDATED OR A NON-STANDARD UNIT HAS BEEN APPROVED BY THE DIVISION



OPERATOR CERTIFICATION

I hereby certify the the information contained herein is true and complete to the best of my knowledge and belief.

David Stewart
Signature

David Stewart
Printed Name

Sr. Regulatory Analyst
Title

2/106
Date

SURVEYOR CERTIFICATION

I hereby certify that the well location shown on this plat was plotted from field notes of actual surveys made by me or under my supervision, and that the same is true and correct to the best of my belief.

NOVEMBER 7, 2005

Date Surveyed LA

Signature & Seal of Professional Surveyor

Ronald J. Edson
RONALD J. EDSON
11/10/05
05.11.1730

Certificate No. RONALD J. EDSON 3239

Attachment C-101
Occidental Permian Limited Partnership
OPL Twinberry State #2
800 FNL 660 FWL D SEC 8 T18S R34E Lea County, NM
State Lease No. E-07990-3

PROPOSED TD: 13800' TVD

BOP PROGRAM: 0 - 400' None

400 - 5900' 13-3/8" 3M annular preventer, to be used as
divertor only.

5900 - 13800' 11" 5M blind pipe rams with 5M annular
preventer and rotating head below 8500'.

CASING: Surface: 13-3/8" OD 48# H40 ST&C new casing set at 400'
17-1/2" hole

Intermediate: 9-5/8" OD 36# K55 ST&C new casing from 0-5900'
12-1/4" hole

Production: 7" OD 26# L80 LT&C new casing from 0-11800'
8-3/4" hole

Liner: 4-1/2" OD 11.6# P110 LT&C casing from 11600-13800'
6-1/4" hole

CEMENT: Surface - Circulate cement with 200sx HES Light PP cement with 2% CaCl₂
+ .25#/sx Flocele followed by 250sx PP cement with 2% CaCl₂ + .25#/sx
Flocele.

Intermediate - Circulate cement with 1400sx IFC with .25#/sx Cello-
Seal followed by 200sx PP cement with 2% CaCl₂.

Production - Cement with 600sx IFH with .1% HR-7 followed by 200sx PP
cement. Estimated top of cement is 5700'.

Liner - Cement with 250sx Super H with .5% LFLC + .4% CFR-3 + 5#/sx
Gilsonite + 1#/sx salt + .2% HR-7. Estimated top of cement is 11600'.

Note: Cement volumes may need to be adjusted to hole caliper.

MUD: 0 - 400' Fresh water/native mud. Lime for pH control
(9-10). Paper for seepage.
Wt 8.7-9.2 ppg, Vis 32-34 sec

400 - 5900' Fresh/*Brine water. Lime for pH control (10.0-
10.5). Paper for seepage.
Wt 8.3-9.0/10.0-10.1ppg, Vis 28-29 sec
*Fresh water will be used unless chlorides in
the mud system increases to 20000PPM.

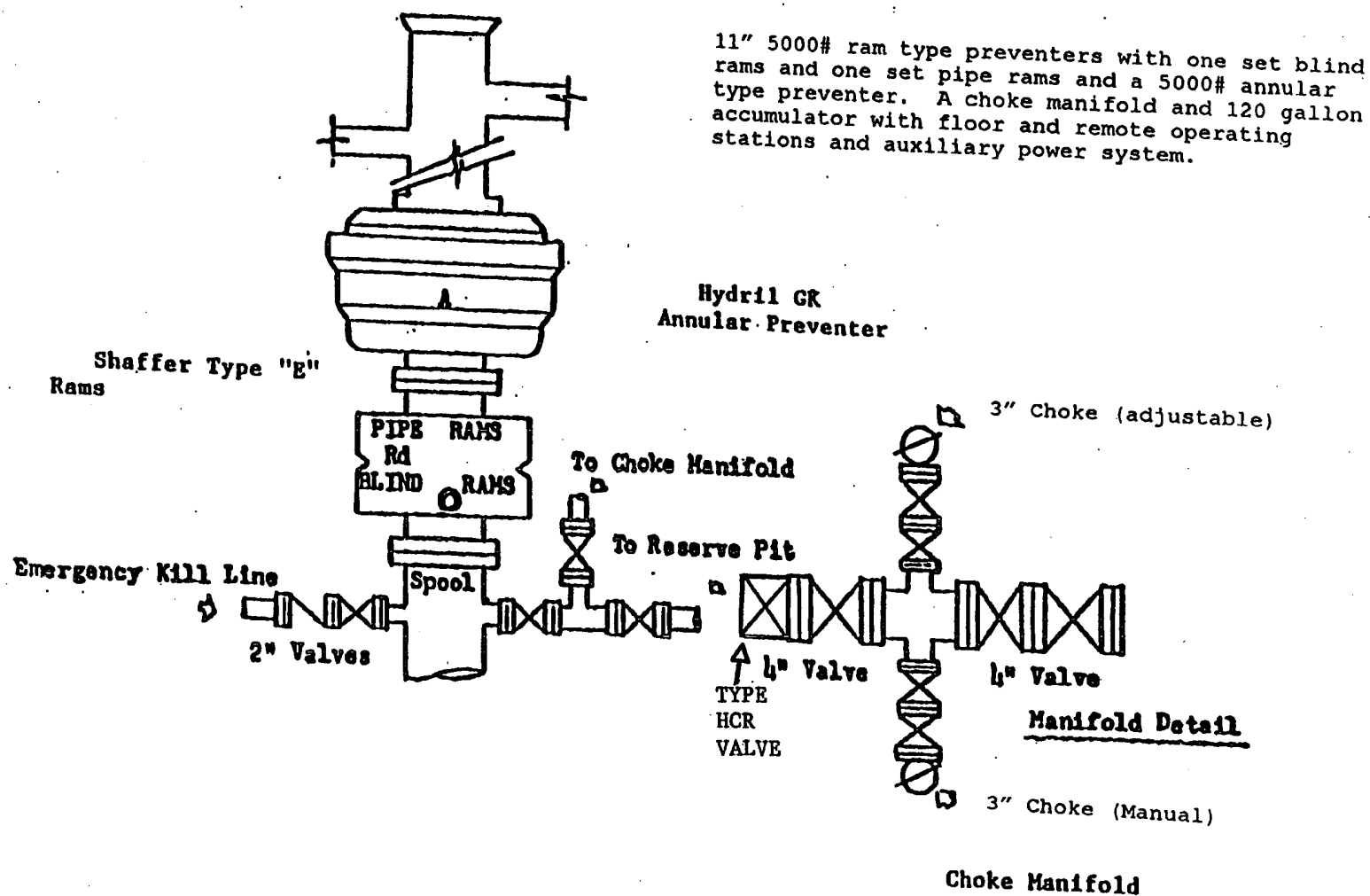
5900 - 9500' Fresh water. Lime for pH control(9-9.5). Paper
for seepage.
Wt 8.3-8.5 ppg, Vis 28-29 sec

9500 - 11800' Cut brine. Lime for pH control (10-10.5).
Wt 9.6-10.0 ppg, Vis 28-29sec

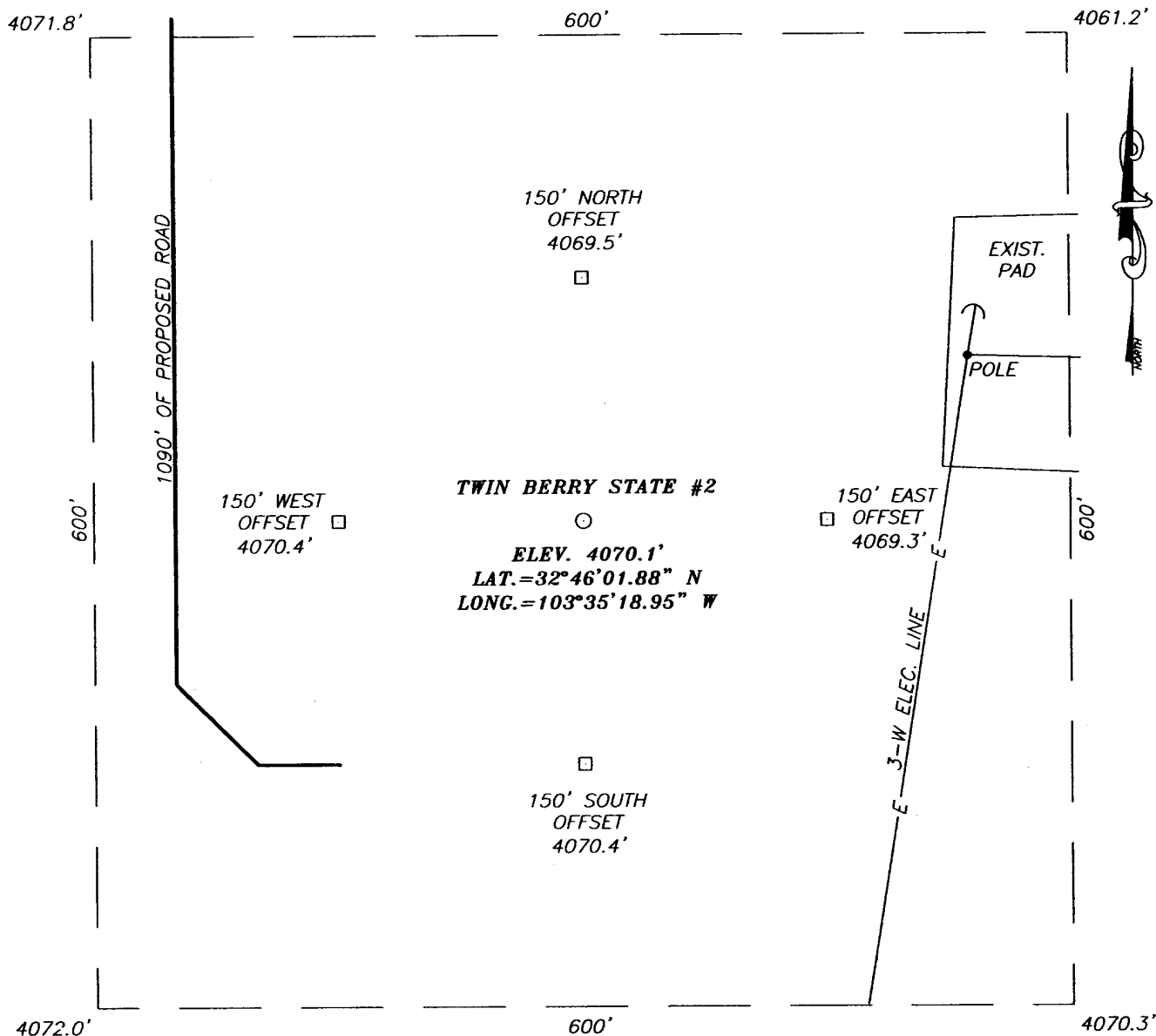
11800 - 13800' Mud up with an Duo Vis/Flo Trol mud system.
Wt 9.6-10.0ppg, Vis 32-36sec, WL<10cc

BLOWOUT PREVENTOR SCHEME

EXHIBIT A

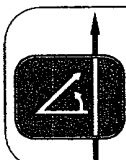
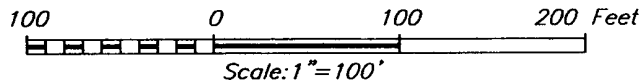


SECTION 8, TOWNSHIP 18 SOUTH, RANGE 34 EAST, N.M.P.M.,
LEA COUNTY, NEW MEXICO



DIRECTIONS TO LOCATION

FROM THE INTERSECTION OF ST. HWY. #529 AND CO. RD. L-125 (QUERECHO RD) GO APPROX. 0.3 MILES NORTH-NORTHWEST ON CO. RD. L-125. ROAD BENDS RIGHT AND CONTINUES NORTH-NORTHEAST APPROX. 1.2 MILES. TURN RIGHT AND GO EAST APPROX. 0.3 MILES. ROAD BENDS RIGHT AND GOES SOUTH APPROX. 300 FEET. FOLLOW BENDS LEFT AND CONTINUE EAST APPROX. 0.5 MILES. THIS LOCATION IS APPROX. 900 FEET SOUTH.



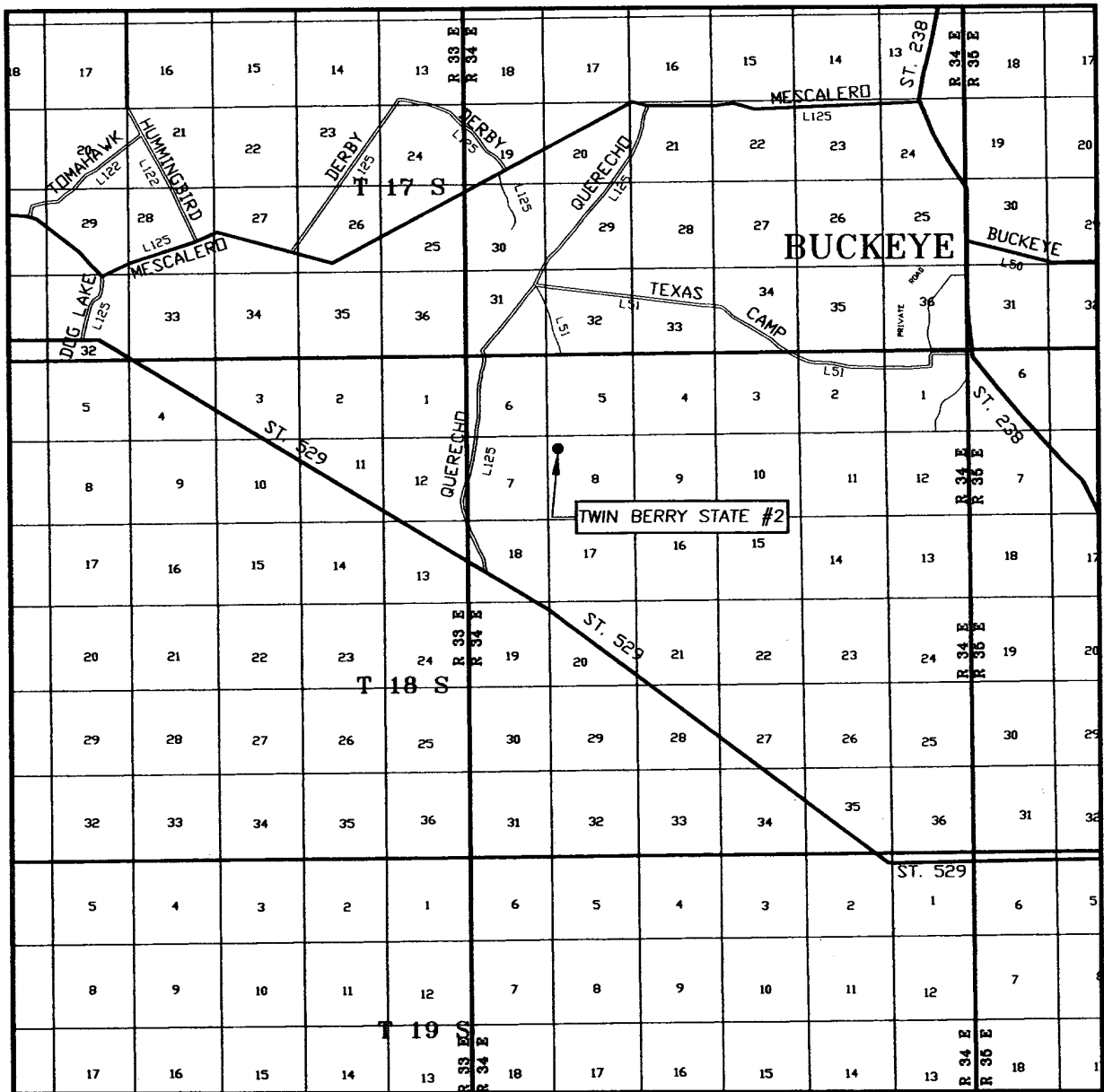
PROVIDING SURVEYING SERVICES
SINCE 1946
JOHN WEST SURVEYING COMPANY
412 N. DAL PASO
HOBBBS, N.M. 88240
(505) 383-3117

OCCIDENTAL PERMIAN, LTD.

TWIN BERRY STATE #2 WELL
LOCATED 800 FEET FROM THE NORTH LINE
AND 660 FEET FROM THE WEST LINE OF SECTION 8,
TOWNSHIP 18 SOUTH, RANGE 34 EAST, N.M.P.M.,
LEA COUNTY, NEW MEXICO.

Survey Date: 11/7/05	Sheet 1 of 1 Sheets
W.O. Number: 05.11.1730	Dr By: LA
Date: 11/10/05	Disk: CD#4
05111730	Scale: 1"=100'

VICINITY MAP



SCALE: 1" = 2 MILES

SEC. 8 TWP. 18-S RGE. 34-E

SURVEY N.M.P.M.

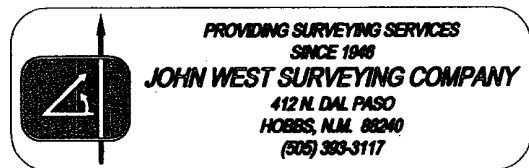
COUNTY LEA

DESCRIPTION 800' FNL & 660' FWL

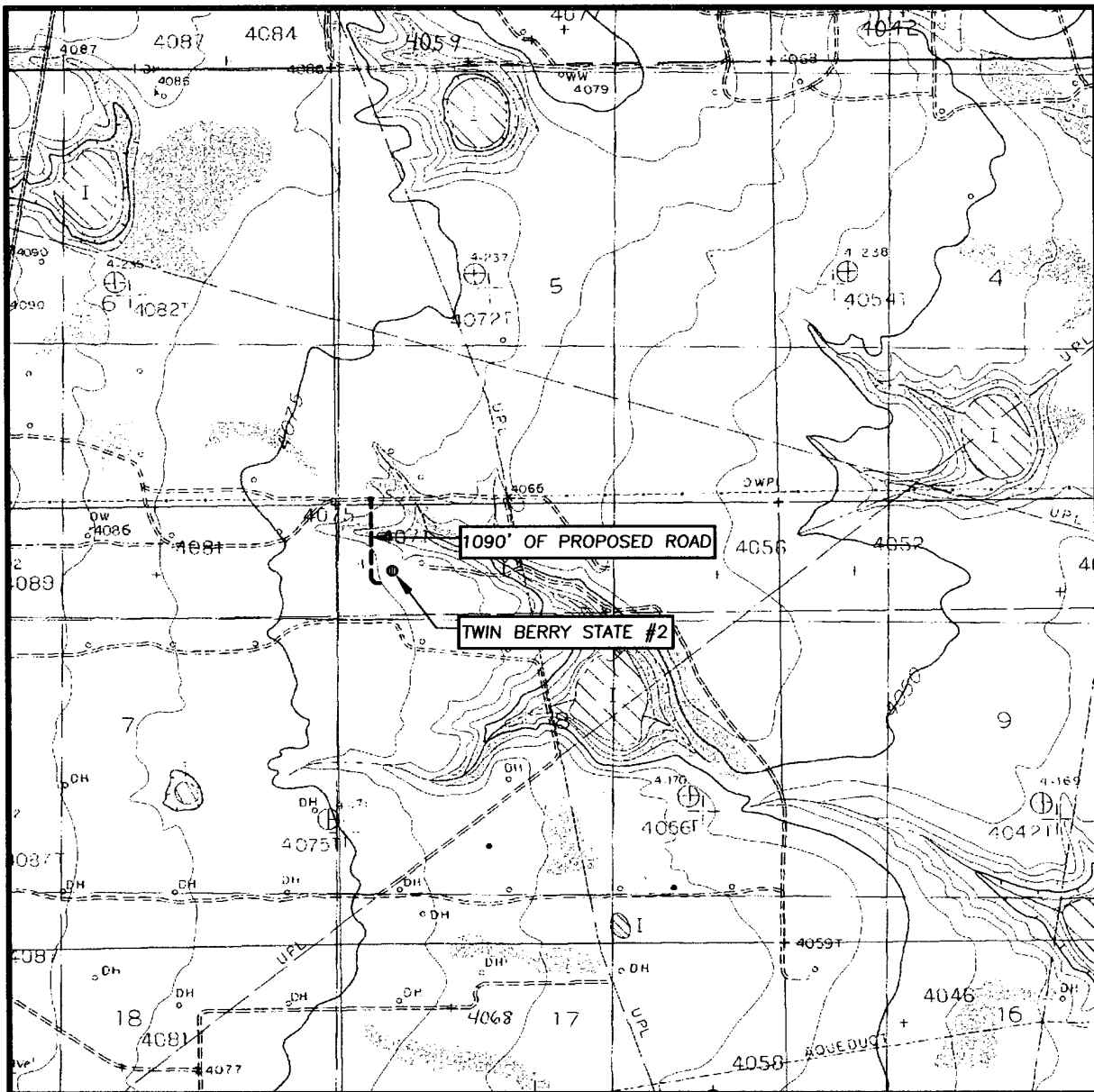
ELEVATION 4070'

OPERATOR OCCIDENTAL PERMIAN, LTD.

LEASE TWIN BERRY STATE



LOCATION VERIFICATION MAP



SCALE: 1" = 2000'

CONTOUR INTERVAL:
BUCKEYE, N.M. - 5'

SEC. 8 TWP. 18-S RGE. 34-E

SURVEY N.M.P.M.

COUNTY EDDY

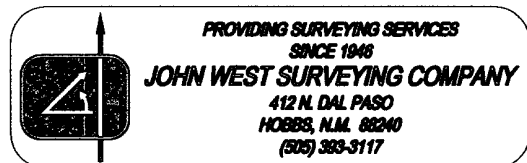
DESCRIPTION 800' FNL & 660' FWL

ELEVATION 4070'

OPERATOR OCCIDENTAL PERMIAN, LTD.

LEASE TWIN BERRY STATE

U.S.G.S. TOPOGRAPHIC MAP
BUCKEYE, N.M.



**Occidental Permian
Limited Partnership
PO Box 50250
Midland, TX 79710**

**Hydrogen Sulfide (H₂S)
Contingency Plan**

For

**OPL Twin Berry State #2
800 FNL 660 FWL
Sec 8, T18S, R34E
Lea County, NM**

And

McVay Drilling Co., Rig No. 8

TABLE OF CONTENTS

<u>ITEM</u>	<u>PAGE</u>
PREFACE	3
LOCATION MAP.....	4
RIG SKETCH.....	5
EMERGENCY RESPONSE ACTIVATION AND GENERAL RESPONSIBILITIES	6
SPECIFIC EMERGENCY GUIDANCE	
- H2S Release	8
- Well Control	10
PUBLIC RELATIONS	13
PHONE CONTACTS – OP DOWNHOLE SERVICES GROUP	14
EMERGENCY PERSONELL NOTIFICATION NUMBERS.....	15
PHONE CONTACTS – OP PRODUCTION AND PLANT PERSONNEL	16
PHONE CONTACTS – OP HES PERSONNEL	16

PREFACE

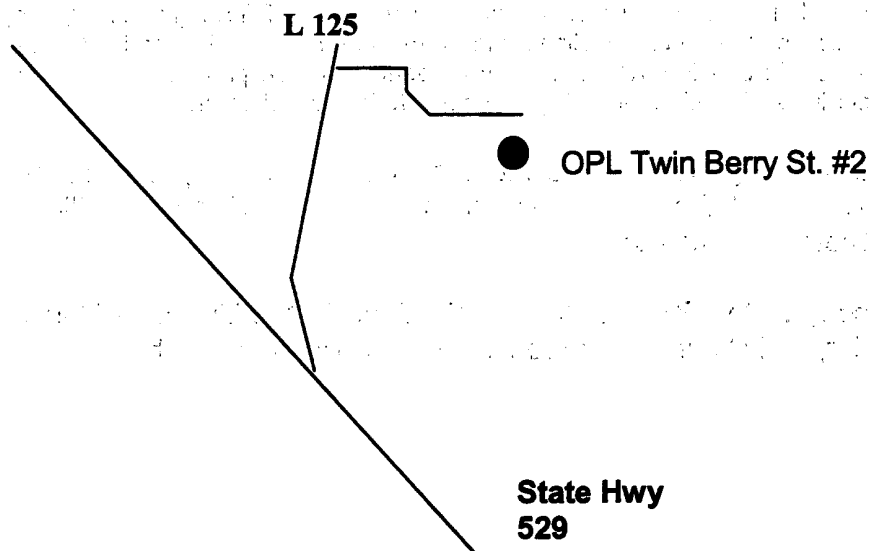
An effective and viable Contingency Plan is intended to provide prior planning and guidance in responding to emergency incidents. The primary considerations in its development are protection of personnel, the public, company and public property, and the environment.

Although the plan addresses varied emergency situations which may occur, it recognizes that flexibility and the use of the organization's knowledge and experience is critical to safe resolution of emergency incidents. Response actions outlined in the plan provide a framework, which may be placed into operation without confusion. These actions should promote quick and decisive actions during the critical initial period and immediately following an emergency. As the response progresses, additional guidelines and procedures may need to be implemented as the situation dictates. In addition, all emergency incidents must be properly reported per the Oxy Incident Reporting and Notification Policy, state and federal requirements, etc.

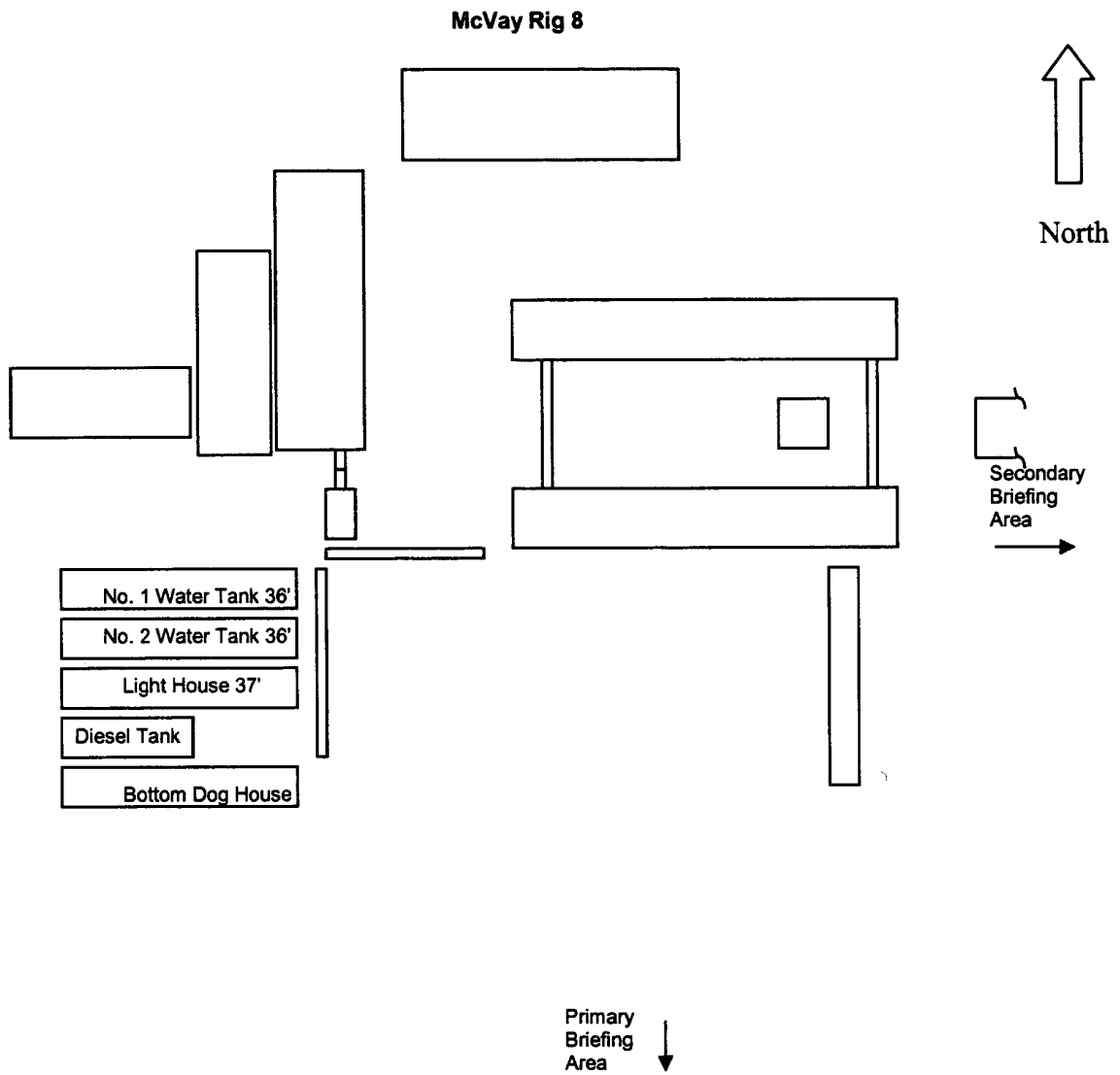
This Contingency Plan is intended for use on Oxy Downhole Services Group projects and the operations within their area of responsibility, such as drilling, critical well work, etc.

A copy of the Plan shall be maintained in the Top Dog House, Rig Managers trailer, and Company Representative's trailer if applicable.

Occidental Permian LP
OPL Twin Berry St. #2
Y = 643619.6 N
X = 728924.0 E
Lat. 32°46'01.88"N
Long. 103°35'18.95"W



DIRECTIONS TO LOCATION: From the intersection of SH 529 and CR L-125, go approximately 0.3 miles north/northwest on CR L-125. Road bends right and continues north/northeast approx. 1.2 miles. Turn right and go east approx. 0.3 miles. Road bends right and go south approx. 300', follow bend left and continue east approx. 0.5 miles. The proposed location is approximately 900' south.



EMERGENCY RESPONSE ACTIVATION AND GENERAL RESPONSIBILITIES

Activation of the Emergency Action Plan

- A. In the event of any emergency situation, all personnel on location should first ensure that the following items are initiated. After that, they should refer to the appropriate Specific Emergency Guidance sections on pages ten (10) through twelve (12) in this document for further responsibilities:
1. Notify the senior ranking contract representative on site.
 2. Notify Oxy representative in charge.
 3. Notify civil authorities if the Oxy Representative can not be contacted and the situation dictates.
 4. Perform rescue and first aid as required (without jeopardizing additional personnel).

General Responsibilities

Oxy Permian Personnel:

- A. Operations Specialist: The Oxy Drilling/Critical Well Servicing Operations Specialist or contract personnel serving in that capacity will serve as Operations Chief Officer for all emergency incidents. The Operations Chief Officer is responsible for:
1. Notification to the Downhole Services Team Leader of the incident occurrence.
 2. Notification to the local RMT/PMT leader of the incident occurrence, and the need for the designated local RMT/PMT Incident Commander to act in that capacity for the response effort.
 3. Sole control of all tactical activities directed toward reducing the immediate hazard, establishing situational control and restoring the operations to a non-emergency state.
- B. Local RMT/PMT Designated Incident Commander: The Oxy local RMT/PMT Designated Incident Commander will serve as the overall Incident Commander for the drilling or critical well servicing emergency incident. The Incident Commander is responsible for:
1. Coordinating with the Downhole Services Team Leader for notification to the Oxy Crisis Management team of the incident occurrence.
 2. Establishing and managing the overall incident command structure and response from inception through restoration of normal activities in the area.
- C. Downhole Services HES Tech: The Downhole Services HES Tech (or his designate) is responsible for reporting to the incident as soon as reasonably possible, to provide support to the response effort as required by the Operations Chief Officer or the Incident Commander.

Contract Drilling Personnel will immediately report to their assigned stations and perform their duties as outlined in the appropriate Specific Emergency Guidance sections on pages ten (10) through twelve (12) in this document.

Other Contractor Personnel will report to the safe briefing area to assist Oxy personnel and civil authorities as requested when it is safe to do so and if they have been adequately trained in their assigned duties.

Civil Authorities (Law Enforcement, Fire, and EMS) will be responsible for:

1. Establishing membership in the Unified Incident Command.
2. As directed by the Incident Commander and the Unified Command, control site access, re-route traffic, and provide escort services for response personnel.
3. Perform all fire control activities in coordination with the Unified Command.
4. Initiate public evacuation plans as instructed by the Incident Commander.
5. Perform rescue or recovery activities with coordination from the Unified Command.
6. Provide medical assistance as dictated by the situation at hand.

H2S RELEASE

The following procedures and responsibilities will be implemented on activation of the H2S siren and lights.

All Personnel:

1. On alarm, don escape unit (if available) and report to upwind briefing area.

Rig Manager/Tool Pusher:

1. Check that all personnel are accounted for and their condition.
2. Administer or arrange for first aid treatment, and /or call EMTs as needed.
3. Identify two people best suited to secure well and perform rescue, and instruct them to don SCBA.
4. Notify Contractor management and Oxy Representative.
5. Remain at the briefing area, assess and monitor personnel and overall situation for hazards or conditions that might warrant a change in the action plan.

Two People Responsible For Shut-in and Rescue:

1. Don SCBA and acquire tools to secure well and perform rescue, i.e., wrenches, retrieval ropes, etc.
2. Utilize the buddy system to secure well and perform rescue(s).
3. Return to the briefing area and stand by for further instructions.

All Other Personnel:

1. Isolate the area and prevent entry by other persons into the 100 ppm ROE. Additionally the first responder(s) must evacuate any public places encompassed by the 100 ppm ROE. First responder(s) must take care not to injure themselves during this operation. Company and/or local officials must be contacted to aid in this operation. Evacuation of the public should be beyond the 100 ppm ROE.

Oxy Representative:

1. Remain at the briefing area, assess and monitor personnel and overall situation for hazards or conditions that might warrant a change in the action plan.
2. Notify Operation Specialists or Team Leader and RMT Leader or Local Incident Commander, and Police, Fire Department, or other local emergency services as required.

Training

There will be an initial training session prior to encountering a known or probable H₂S zone (within 3 days or 500 feet) and weekly H₂S and well control drills for all personnel in each crew. The initial training session shall include a review of the site specific H₂S Drilling Operations Plan and the Public Protection Plan (Contingency Plan). This plan shall be available at the well site. All personnel will be required to carry documentation that they have received the proper training.

Ignition of Gas Source

Should control of the well be considered lost and ignition considered, take care to protect against exposure to Sulfur Dioxide (SO₂). Intentional ignition must be coordinated with the NMOCD and local officials. Additionally the NM State Police shall be the Incident Command of any major release.

Characteristics of H₂S and SO₂

Common Name	Chemical Formula	Specific Gravity	Threshold Limit	Hazardous Limit	Lethal Concentration
Hydrogen Sulfide	H ₂ S	1.189 Air = 1	10 ppm	100 ppm	600 ppm
Sulfur Dioxide	SO ₂	2.21 Air = 1	2 ppm	N/A	1000 ppm

Contacting Authorities

Oxy Permian personnel must liaison with local and state agencies to ensure a proper response to a major release. Additionally, the OCD must be notified of the release as soon as possible but no later than 4 hours. Agencies will ask for information such as; type and volume of release, wind direction, location of release, etc. Be prepared with all information available. The following call list of essential and potential responders has been prepared for use during a release. This response plan must be in coordination with the State of New Mexico's 'Hazardous Materials Emergency Response Plan' (HMER).

WELL CONTROL

The following procedures will be implemented when a loss of primary control is indicated. Indicators of loss of primary control are flow from the well, an increase in pit volume, or when the drilling fluid used to fill the hole on trips is less than the calculated pipe displacement volume. The emergency signal for well control procedures will be a single long blast of the rig air horn.

Kick While Drilling - Procedures And Responsibilities

Driller:

1. Stop the rotary and hoist the kelly above the rotary table.
2. Stop the mud pump(s).
3. Check for flow.
4. If flowing, sound the alarm immediately.
5. Ensure that all crew members fill their responsibilities to secure the well.
6. Record drill pipe and casing shut-in pressures and pit volume increase and begin kill sheet.

Derrickman:

1. Go to BOP/choke manifold area.
2. Open choke line valve on BOP.
3. Signal to Floorman #1 that the choke line is open.
4. Close chokes after annular or pipe rams are closed.
5. Record shut-in casing pressure and pit volume increase.
6. Report readings and observations to Driller.
7. Verify actual mud weight in suction pit and report to Driller.
8. Be readily available as required for additional tasks.

Floorman # 1:

1. Go to accumulator control station and await signal from Derrickman.
2. Close annular preventer and HCR on signal (if available, if not then close pipe rams).
3. Record accumulator pressures and check for leaks in the BOP or accumulator system.
4. Report to Driller, and be readily available as required for additional tasks.

Floorman # 2:

1. Start water on motor exhausts.
2. Notify Contractor Tool Pusher or Rig Manager of well control situation.
3. Check location for ignition sources and extinguish or turn off, and stop any welding in progress.
4. Report to Driller, and be readily available as required for additional tasks.

Floorman # 3:

1. Stand-by with Driller, and be readily available as required for additional tasks.

Tool Pusher/Rig Manager:

1. Notify Oxy Representative and report to rig floor.
2. Review and verify all pertinent information.
3. Communicate information to Oxy Representative, and confer on an action plan.
4. Finalize well control worksheets, calculations and preparatory work for action plan.
5. Initiate and ensure the action plan is carried out.
6. Communicate any changes in well or site conditions, or any indications that the action plan needs to be revised to the Oxy representative.

Oxy Representative:

1. Notify Operation Specialists or Team Leader and RMT Leader or Local Incident Commander, and Police, Fire Department, or other local emergency services as required.

Kick While Tripping - Procedures and Responsibilities

Driller:

1. Sound the alarm immediately when pipe displacement volume is less than 75% of calculated.
2. Position the upper tool joint just above rotary table and set slips.
3. Check for flow.
4. Ensure that all crew members fill their responsibilities to secure the well.
5. Record drill pipe and casing shut-in pressures and pit volume increase, and begin kill sheets.

Derrickman: (same as while drilling)

Floor Man # 1:

1. Install full opening valve (with help from Floorman #2) in top drill string connection.
2. Tighten valve with make up tongs.
3. Go to accumulator control station and await signal from Derrickman.
4. Close annular preventer and HCR valve on signal (if available, if not then close pipe rams).
5. Record accumulator pressures and check for leaks in the BOP and accumulator system.
6. Report to Driller, and be readily available as required for additional tasks.

Floor Man # 2:

1. Assist installing full opening valve in drill string.
2. Position back-up tongs for valve make-up.
3. Start water on motor exhausts.
4. Notify Contractor Tool Pusher or Rig Manager of well control situation.
5. Check location for ignition sources and extinguish or turn off, and stop any welding in progress.
6. Report to Driller, and be readily available as required for additional tasks.

Floorman # 3, Rig Manager/Tool Pusher, and Oxy Representative: (same as while drilling)

PUBLIC RELATIONS

Oxy recognizes that the news media have a legitimate interest in incidents at Oxy facilities that could affect the public. It is to the company's benefit to cooperate with the news media when incidents occur because these media are our best liaison with the public.

Our objective is to see that all reports of any emergency are factual and represent the company's position fairly and accurately. Cooperation with news media representatives is the most reliable guarantee that this objective will be met.

All contract and Oxy employees are instructed **NOT** to make any statement to the media concerning the emergency incident. If a media representative contacts any employee, they should refer them to the designated Emergency Command Center where they should contact the Incident Commander or his designated relief for any information concerning the incident.

OXY PERMIAN DOWNHOLE SERVICES GROUP

	LOCATION	OFFICE	HOME	CELL	PAGER
Manager Operations Support					
Hardesty, Steve	Midland	432-685-5880	432/694-6441	713-560-8095	
Team Leader					
Pennington, Randy	Midland	432-685-5684	432/689-7642	432-556-0207	713-312-8186
			Toledo Bend =	318-590-2349	
Operations Specialists					
Fleming, Joe	Midland	432-685-5858	432/699-0875	432-425-6075	
Ray, Fred	Midland	432-685-5683	432/362-2857	432-661-3893	
HES Tech					
Thompson, Don	Midland	432-685-5719	432/684-3900	432-556-1505	

Emergency Notification Numbers

Public Authorities		
New Mexico State Police	Artesia	505/746-2704
New Mexico State Police	Carlsbad	505/885-3137
New Mexico State Police	Hobbs	505/392-5588
Eddy County Sheriff's Office	Artesia	505/746-2704
Eddy County Sheriff's Office	Carlsbad	505/887-7551
Lea County Sheriff's Office	Hobbs	505/393-2515
Local Emergency Planning Center	Eddy County	505/887-9511
Local Emergency Planning Center	Lea County	505/397-9231
New Mexico Oil & Gas Commission	Artesia	505/748-1283
New Mexico Oil & Gas Commission	Hobbs	505/393-6161
NM Emergency Response Center	Hobbs	505/827-9222

Emergency Services		
Fire Fighting, Rescue, Ambulance, Police	Artesia	911
Fire Fighting, Rescue, Ambulance, Police	Carlsbad	911
Fire Fighting, Rescue, Ambulance, Police	Hobbs	911
Flight For Life	Lubbock	806/743-9911
Aerocare	Lubbock	806/7478923
Med Flight Air Ambulance	Albuquerque	505/842-4433

Other Emergency Services		
Boots and Coots		1/800-256-9688
Cudd Pressure Control	Midland	432/699-0139
B.J. Services	Artesia	505/746-3569
Halliburton	Artesia	505/746-2757

OXY Permian Production and Plant Personnel
OXY Permian Crisis Team Hotline Notification (713) 935-7210

PERSON	LOCATION	OFFICE	FAX	CELL	PAGER
--------	----------	--------	-----	------	-------

Asset Management-Operations Areas

OXY Permian General Manager: Tom Menges	Houston	(281) 552-1147	(281) 552-1484	(713) 560-8038	
South Permian Asset: Matt Hyde	Midland	(432) 685-5802	(432) 685-5930	(432) 556-5016	

RMT/PMT Leaders: South Permian Asset

John Nicholas	Midland	(432) 685-5600			
---------------	---------	-------------------	--	--	--

PERSON	LOCATION	OFFICE	FAX	CELL	PAGER
--------	----------	--------	-----	------	-------

Production Coordinators: S. Permian Asset

New Mexico: John Erickson	Hobbs	(505) 393-2174	(505) 397-2671	(505) 390-6426	(505) 370-6836
---------------------------	-------	-------------------	-------------------	-------------------	-------------------

OXY Permian HES Personnel
OXY Permian Crisis Team Hotline Notification (713) 935-7210

PERSON	LOCATION	OFFICE	FAX	CELL	PAGER
--------	----------	--------	-----	------	-------

HES Coordinators & Area of Responsibility

Frontier: Ricky Tyler	Midland	(432) 685-5707	(432) 685-5742	(432) 668-5790	
--------------------------	---------	-------------------	-------------------	-------------------	--

HES Techs & Area of Responsibility

Hobbs RMT: Steve Bishop	Hobbs	(505) 397-8251	(505) 397-8204	(505) 390-4784	(877) 339-1954-1118#
Frontier-New Mexico: Rick Kerby	Hobbs	(505) 393-2174	(505) 393-2671	(505) 390-8639	(505) 370-6527

District I
1625 N. French Dr., Hobbs, NM 88240
District II
1301 W. Grand Avenue, Artesia, NM 88210
District III
1000 Rio Brazos Road, Aztec, NM 87410
District IV
1220 S. St. Francis Dr., Santa Fe, NM 87505

State of New Mexico
Energy Minerals and Natural Resources

Form C-144
March 12, 2004

Oil Conservation Division
1220 South St. Francis Dr.
Santa Fe, NM 87505

For drilling and production facilities, submit to appropriate NMOCD District Office.
For downstream facilities, submit to Santa Fe office

Pit or Below-Grade Tank Registration or Closure

Is pit or below-grade tank covered by a "general plan"? Yes ☐ No ☒

Type of action: Registration of a pit or below-grade tank ☒ Closure of a pit or below-grade tank ☐

Operator: Occidental Permian, LTD Telephone: 432.685.5683 e-mail address: fred_ray@oxy.com
Address: P.O. Box 50250, Midland, TX 79710
Facility or well name: OPL Twin Berry #2 API #: 30-025-37683 NWNW U/L "D" Sec 8 T 18-S R 34-E
County: LEA Latitude 32°46'01.88" N Longitude 103°35'18.95" W NAD: 1927 ☒ 1983 ☐ Surface Owner Federal ☐ State ☒ Private ☐ Indian ☐

Pit

Type: Drilling ☒ Production ☐ Disposal ☐

Workover ☐ Emergency ☐

Lined ☒ Unlined ☐

Liner type: Synthetic ☒ Thickness 12 mil Clay ☐ Volume 10,000 bbl

Below-grade tank

Volume: bbl Type of fluid:

Construction material:

Double-walled, with leak detection? Yes ☐ If not, explain why not.

Depth to ground water (vertical distance from bottom of pit to seasonal high water elevation of ground water.)

Less than 50 feet

(20 points)

50 feet or more, but less than 100 feet

(10 points)

100 feet or more

(0 points) 0

Wellhead protection area: (Less than 200 feet from a private domestic water source, or less than 1000 feet from all other water sources.)

Yes

(20 points)

No

(0 points) 0

Distance to surface water: (horizontal distance to all wetlands, playas, irrigation canals, ditches, and perennial and ephemeral watercourses.)

Less than 200 feet

(20 points)

200 feet or more, but less than 1000 feet

(10 points) 10

1000 feet or more

(0 points)

Ranking Score (Total Points)

10

If this is a pit closure: (1) attach a diagram of the facility showing the pit's relationship to other equipment and tanks. (2) Indicate disposal location:

onsite ☐ offsite ☐ If offsite, name of facility (3) Attach a general description of remedial action taken including remediation start date and end date. (4) Groundwater encountered: No ☐ Yes ☐ If yes, show depth below ground surface ft. and attach sample results. (5) Attach soil sample results and a diagram of sample locations and excavations.

I hereby certify that the information above is true and complete to the best of my knowledge and belief. I further certify that the above-described pit or below-grade tank has been/will be constructed or closed according to NMOCD guidelines ☒, a general permit ☐, or an (attached) alternative OCD-approved plan ☐.

Date: 01/27/2006

Printed Name/Title: Fred Ray / Drilling Specialist

Signature

Fred Ray

Your certification and NMOCD approval of this application/closure does not relieve the operator of liability should the contents of the pit or tank contaminate ground water or otherwise endanger public health or the environment. Nor does it relieve the operator of its responsibility for compliance with any other federal, state, or local laws and/or regulations

Approval:

Date:

PETROLEUM ENGINEER

Printed Name: FEB 06 2006

Signature

[Signature]