

DISTRICT I
P. O. Box 1980, Hobbs, NM 88240

DISTRICT II
P. O. Drawer DD, Artesia, NM 88210

DISTRICT III
1000 Rio Brazos Rd., Aztec, NM 87410

DISTRICT IV
P. O. Box 2088, Santa Fe, NM 87504-2088

State of New Mexico
Energy, Minerals and Natural Resources Department

Form C-102
Revised February 10, 1994

Instructions on back

OIL CONSERVATION DIVISION

PO Box 2088
Santa Fe, NM 87504-2088

Submit to Appropriate District Office

State Lease-4 copies
Fee Lease-3 copies

AMENDED REPORT

WELL LOCATION AND ACREAGE DEDICATION PLAT

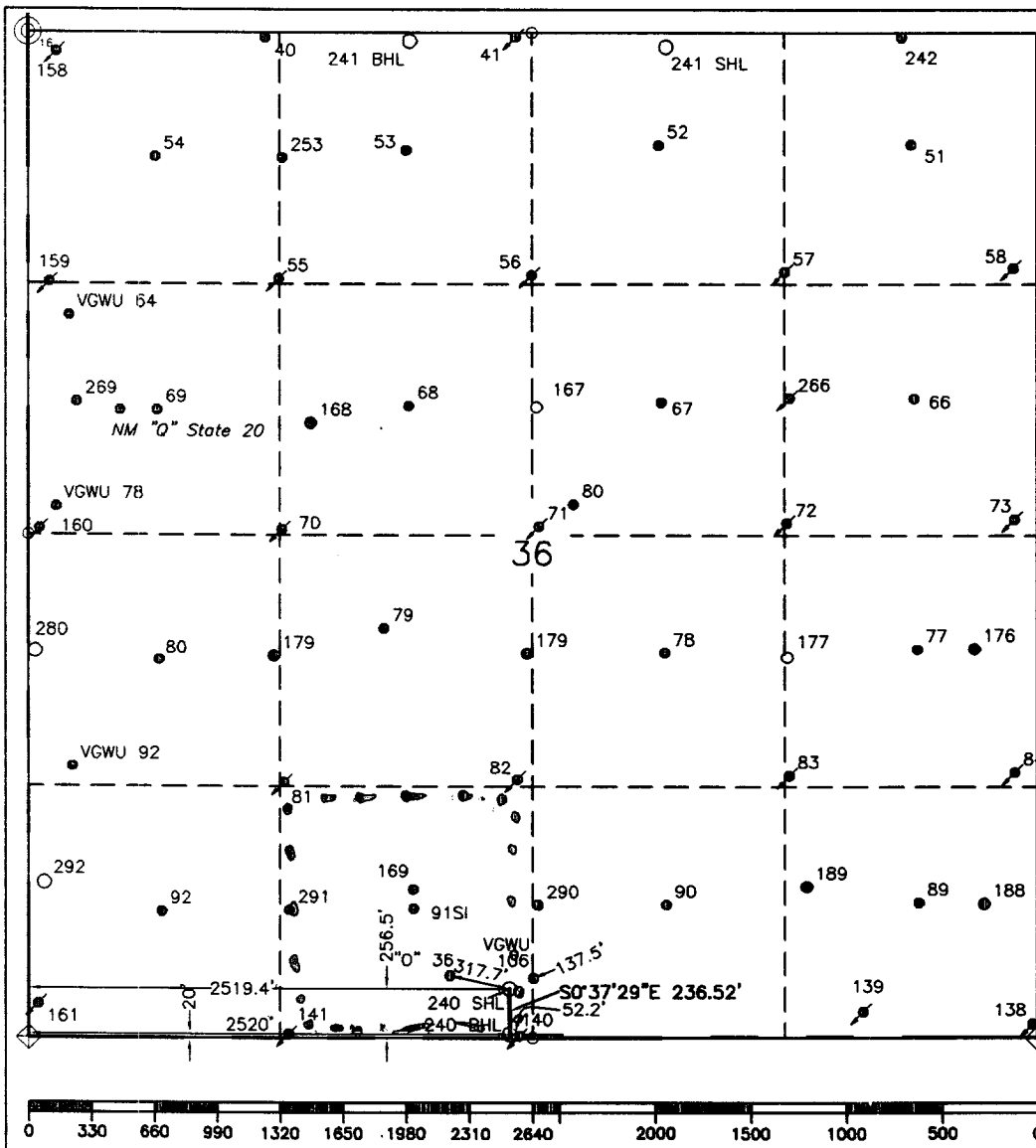
¹ API Number 30-025-37232		² Pool Code 62180		³ Pool Name San Andres Vacuum Braylung San Andres	
⁴ Property Code 29923		⁵ Property Name Central Vacuum Unit			⁶ Well Number 240
⁷ OCRID No. 2235T 4323		⁸ Operator Name CHEVRON USA, INC.			⁹ Elevation 3991'

¹⁰ Surface Location									
UL or lot no.	Section	Township	Range	Lot Idn	Feet from the	North/South line	Feet from the	East/West line	County
N	36	17-S	34-E		250.57	South	2519.4	West	Lea

¹¹ Bottom Hole Location If Different From Surface									
UL or lot no.	Section	Township	Range	Lot Idn	Feet from the	North/South line	Feet from the	East/West line	County
N	36	17-S	34-E		20.0' 19'	South	2520' 2522'	West	Lea

¹² Dedicated Acres 40	¹³ Joint or Infill	¹⁴ Consolidation Code	¹⁵ Order No.
-------------------------------------	-------------------------------	----------------------------------	-------------------------

NO ALLOWABLE WILL BE ASSIGNED TO THIS COMPLETION UNTIL ALL INTERESTS HAVE BEEN CONSOLIDATED OR A NON-STANDARD UNIT HAS BEEN APPROVED BY THE DIVISION.



¹⁷ OPERATOR CERTIFICATION I hereby certify that the information contained herein is true and complete to the best of my knowledge and belief.
Signature <i>Ted Tipton / JSP</i>
Printed Name Ted Tipton
Position Manager of Drilling Department
Company Chevron USA, Inc.
Date April 14, 2005
¹⁸ SURVEYOR CERTIFICATION I hereby certify that the well location shown on this plat was plotted from field notes of actual surveys made by me or under my supervision, and that the same is true and correct to the best of my knowledge and belief.
Date Surveyed November 29, 2004
Signature & Seal of Professional Surveyor <i>John S. Piper</i>
Certificate No. 7254 John S. Piper
Sheet

○ = Staked Location ● = Producing Well ↗ = Injection Well ⊙ = Water Supply Well ◆ = Plugged & Abandon Well
⊙ = Found Section Corner, 2 or 3" Iron Pipe & GLO B.C. ○ = Found 1/4 Section Corner, 1" Iron Pipe & GLO B.C.

ADDITIONAL INFORMATION ON THE LOCATION

State Plane Coordinates (1927NAD= 650204.06 SHL; 64960.18 BHL) Northing 650269.08 SHL; 650032.57 BHL		(1927NAD= 751838.70 SHL; 752041.87 BHL) Easting 793017.68 SHL; 793020.26 BHL	
(1927NAD= 32°47'05.356" SHL; 32°47'02.927" BHL) Latitude 32°47'05.801" SHL; 32°47'03.460" BHL		(1927NAD= 103°30'50.010" SHL; 103°30'47.652" BHL) Longitude 103°30'51.799" SHL; 103°30'51.780" BHL	
Zone East	North American Datum 1983	Combined Grid Factor 0.9999816	Coordinate File Buckeye.cr5
Drawing File CVU_240.dwg	Field Book Lea Co. 23, Pg. 51		