

District I
1625 N. French Dr., Hobbs, NM 88240
District II
1301 W. Grand Avenue, Artesia, NM 88210
District III
1000 Rio Brazos Road, Aztec, NM 87410
District IV
1220 S. St. Francis Dr., Santa Fe, NM 87505

State of New Mexico
Energy Minerals and Natural Resources

Oil Conservation Division
1220 South St. Francis Dr.
Santa Fe, NM 87505

Form C-101
Revised March 17, 1999

Submit to appropriate District Office
State Lease - 6 Copies
Fee Lease - 5 Copies

☐ AMENDED REPORT

APPLICATION FOR PERMIT TO DRILL, RE-ENTER, DEEPEN, PLUGBACK, OR ADD A ZONE

¹ Operator Name and Address Pecos Production Company 400 W. Illinois, Suite 1070 Midland, TX 79701		² OGRID Number 215758
³ Property Code 32079		³ API Number 30-025-36329
⁵ Property Name Lou Wortham		⁶ Well No. 7

⁷ Surface Location

UL or lot no.	Section	Township	Range	Lot Idn	Feet from the	North/South line	Feet from the	East/West line	County
E	11	22S	37E		1650'	North	990'	West	Lea

⁸ Proposed Bottom Hole Location If Different From Surface

UL or lot no.	Section	Township	Range	Lot Idn	Feet from the	North/South line	Feet from the	East/West line	County
⁹ Proposed Pool 1 Eunice, San Andres South					¹⁰ Proposed Pool 2 Penrose Skelly - GB				

¹¹ Work Type Code N	¹² Well Type Code O	¹³ Cable/Rotary R	¹⁴ Lease Type Code P	¹⁵ Ground Level Elevation 3365'
¹⁶ Multiple No	¹⁷ Proposed Depth 4800'	¹⁸ Formation San Andres	¹⁹ Contractor Capstar Drlg	²⁰ Spud Date 7-18-03

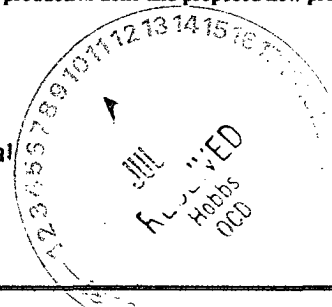
²¹ Proposed Casing and Cement Program

Hole Size	Casing Size	Casing weight/foot	Setting Depth	Sacks of Cement	Estimated TOC
12 1/4"	8 5/8"	24#	1150'	595 sxs	Surface
7 7/8"	5 1/2"	15.5#	4800'	710 sxs	Surface

²² Describe the proposed program. If this application is to DEEPEN or PLUG BACK, give the data on the present productive zone and proposed new productive zone.
Describe the blowout prevention program, if any. Use additional sheets if necessary.

See Attached Program.

Permit Expires 1 Year From Approval
Date Unless Drilling Underway



²³ I hereby certify that the information given above is true and complete to the best of my knowledge and belief. Signature: <i>Aaron Dover</i> Printed name: Aaron Dover Title: Reservoir Engineer Mgr Date: 7-09-03		OIL CONSERVATION DIVISION Approved by: <i>[Signature]</i> Title: PETROLEUM ENGINEER Approval Date: JUL 17 2003 Expiration Date: Conditions of Approval: Attached <input type="checkbox"/>	
Phone: (915) 620-8480			

DISTRICT I
P.O. Box 1980, Hobbs, NM 88241-1980

MAY 14 2003

State of New Mexico
Energy, Minerals and Natural Resources Department

Form C-102
Revised February 10, 1994
Submit to Appropriate District Office
State Lease - 4 Copies
Fee Lease - 3 Copies

DISTRICT II
P.O. Drawer DD, Artesia, NM 88211-0719

OIL CONSERVATION DIVISION
P.O. Box 2088
Santa Fe, New Mexico 87504-2088

DISTRICT III
1000 Rio Brazos Rd., Artec, NM 87410

DISTRICT IV
P.O. BOX 2088, SANTA FE, N.M. 87504-2088

WELL LOCATION AND ACREAGE DEDICATION PLAT

☐ AMENDED REPORT

API Number 30-025-36329	Pool Code 21470	Pool Name Eunice; San Andres, South
Property Code 32079	Property Name LOU WORTHAM	Well Number 7
OGRID No. 215758	Operator Name PECOS PRODUCTION COMPANY	Elevation 3365'

Surface Location

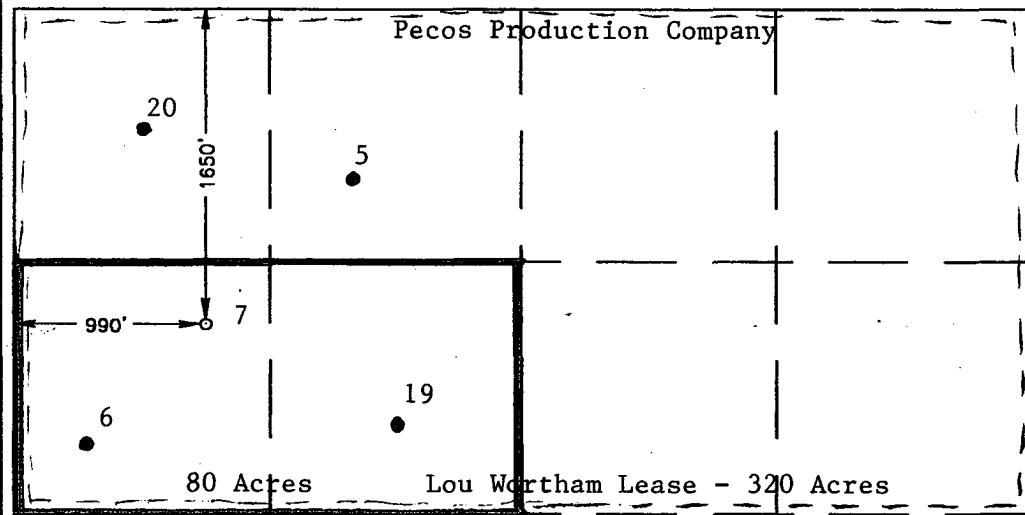
UL or lot No.	Section	Township	Range	Lot Idn	Feet from the	North/South line	Feet from the	East/West line	County
E	11	22-S	37-E		1650'	NORTH	990'	WEST	LEA

Bottom Hole Location If Different From Surface

UL or lot No.	Section	Township	Range	Lot Idn	Feet from the	North/South line	Feet from the	East/West line	County

Dedicated Acres	Joint or Infill	Consolidation Code	Order No.
80			

**NO ALLOWABLE WILL BE ASSIGNED TO THIS COMPLETION UNTIL ALL INTERESTS HAVE BEEN CONSOLIDATED
OR A NON-STANDARD UNIT HAS BEEN APPROVED BY THE DIVISION**

 <p>80 Acres Lou Wortham Lease - 320 Acres</p> <p>GEODETIC COORDINATES WGS 84 LAT.= 32°24'32.83"N LONG.= 103°08'21.16"W</p>	<p>OPERATOR CERTIFICATION</p> <p>I hereby certify the the information contained herein is true and complete to the best of my knowledge and belief.</p> <p><i>Aaron Dover</i> Signature Aaron Dover Printed Name Reservoir Engr Mgr Title 7/9/03 Date</p> <p>SURVEYOR CERTIFICATION</p> <p>I hereby certify that the well location shown on this plat was plotted from field notes of actual surveys made by me or under my supervision, and that the same is true and correct to the best of my belief.</p> <p>May 09, 2003 Date Surveyed A.W.B. Signature & Seal of Professional Surveyor <i>Ronald J. Edson</i> 5/13/03 03.11.0502 Certificate No. RONALD J. EDSON 3239 GARY EDSON 12641</p>
---	--

DISTRICT I
P.O. Box 1980, Hobbs, NM 88241-1980

MAY 14 2003

State of New Mexico

Energy, Minerals and Natural Resources Department

Form C-102

Revised February 10, 1994

Submit to Appropriate District Office

State Lease - 4 Copies

Fee Lease - 3 Copies

DISTRICT II
P.O. Drawer DD, Artesia, NM 88211-0719

OIL CONSERVATION DIVISION

P.O. Box 2088

Santa Fe, New Mexico 87504-2088

DISTRICT III
1000 Rio Brazos Rd., Artec, NM 87410

DISTRICT IV
P.O. BOX 2088, SANTA FE, N.M. 87504-2088

WELL LOCATION AND ACREAGE DEDICATION PLAT

☐ AMENDED REPORT

API Number 30-025-36329	Pool Code 50350	Pool Name Penrose Skelly - GB
Property Code 32079	Property Name LOU WORTHAM	Well Number 7
OGRID No. 215758	Operator Name PECOS PRODUCTION COMPANY	Elevation 3365'

Surface Location

UL or lot No. E	Section 11	Township 22-S	Range 37-E	Lot Idn	Feet from the 1650'	North/South line NORTH	Feet from the 990'	East/West line WEST	County LEA
---------------------------	----------------------	-------------------------	----------------------	---------	-------------------------------	----------------------------------	------------------------------	-------------------------------	----------------------

Bottom Hole Location If Different From Surface

UL or lot No.	Section	Township	Range	Lot Idn	Feet from the	North/South line	Feet from the	East/West line	County
---------------	---------	----------	-------	---------	---------------	------------------	---------------	----------------	--------

Dedicated Acres 40	Joint or Infill	Consolidation Code	Order No.
------------------------------	-----------------	--------------------	-----------

NO ALLOWABLE WILL BE ASSIGNED TO THIS COMPLETION UNTIL ALL INTERESTS HAVE BEEN CONSOLIDATED
OR A NON-STANDARD UNIT HAS BEEN APPROVED BY THE DIVISION

Pecos Production Company	
1650'	
2 990'	7
40 Acres	Lou Wortham Lease
GEODETIC COORDINATES WGS 84 LAT.= 32°24'32.83"N LONG.= 103°08'21.16"W	

OPERATOR CERTIFICATION

I hereby certify the the information
contained herein is true and complete to the
best of my knowledge and belief

Aaron Dover
Signature

Aaron Dover

Printed Name

Reservoir Engr Mgr

Title

7-9-03

Date

SURVEYOR CERTIFICATION

I hereby certify that the well location shown
on this plat was plotted from field notes of
actual surveys made by me or under my
supervision, and that the same is true and
correct to the best of my belief.

May 09, 2003

Date Surveyed

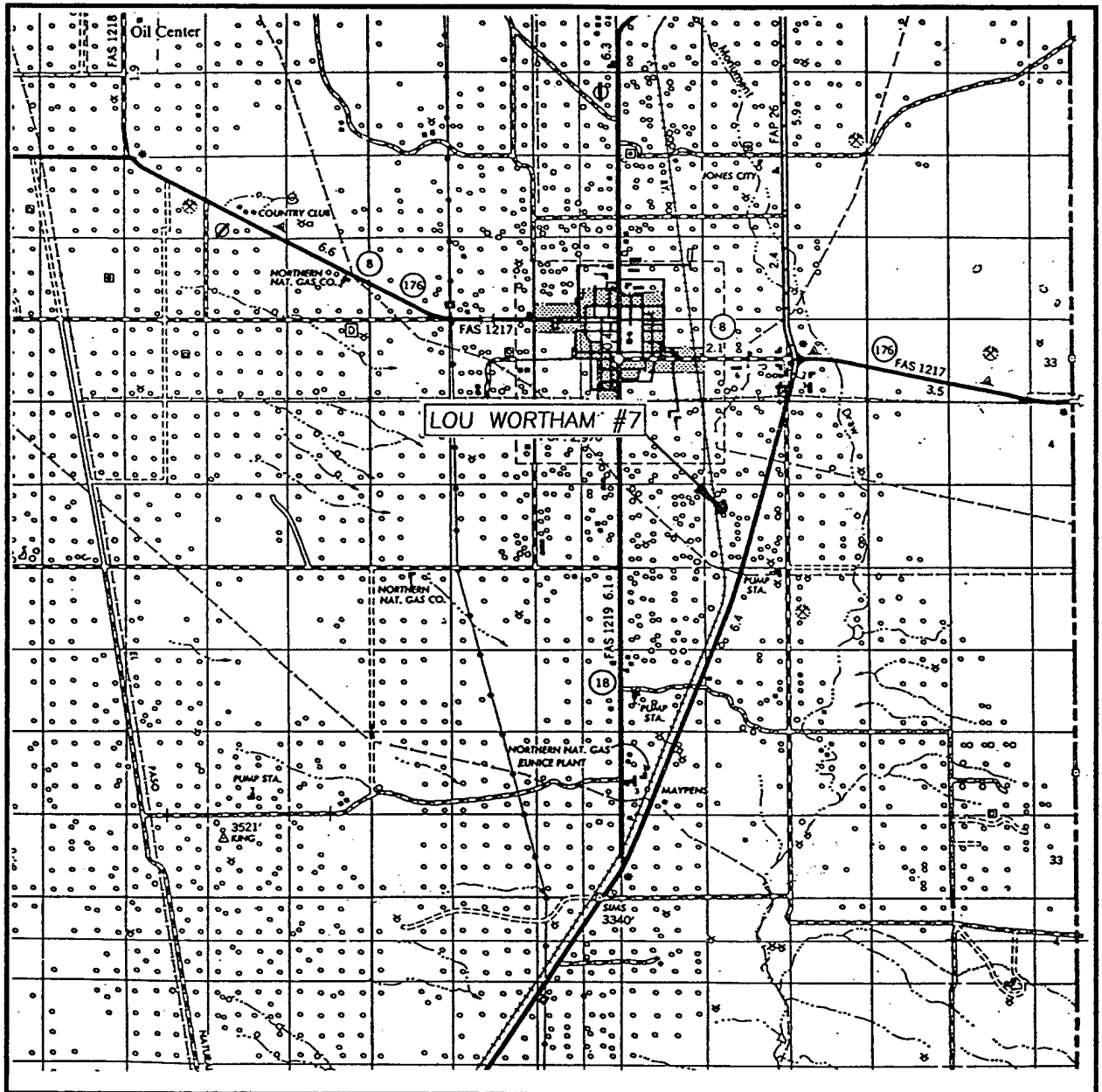
A.W.B

Signature & Seal of
Professional Surveyor

Ronald J. Edson 5/13/03
03.11.0502

Certificate No. RONALD J. EDSON 3239
GARY EDSON 12641

VICINITY MAP



SCALE: 1" = 2 MILES

SEC. 11 TWP. 22-S RGE. 37-E

SURVEY N.M.P.M.

COUNTY LEA

DESCRIPTION 1650' FNL & 990' FWL

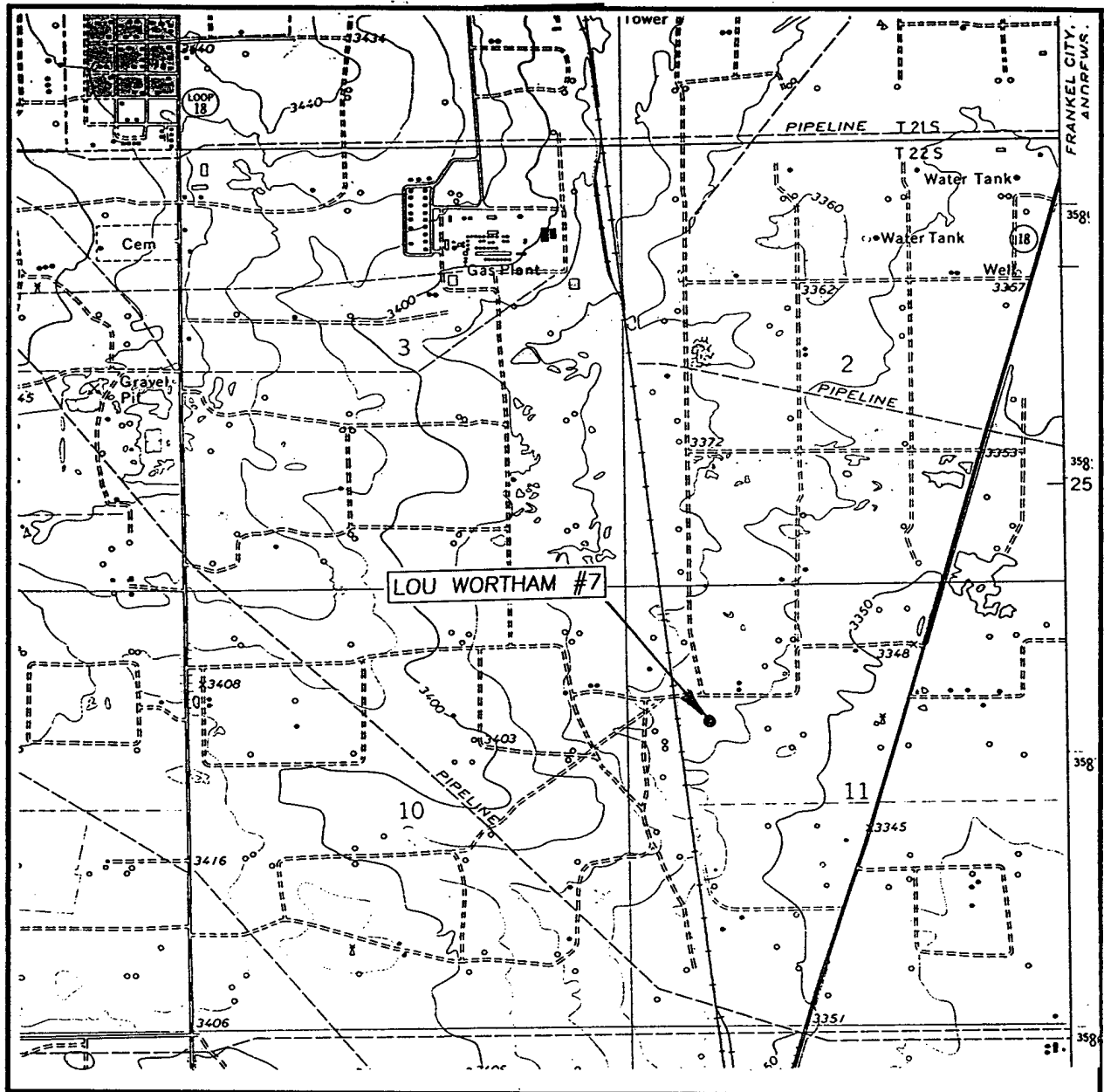
ELEVATION 3365'

OPERATOR PECOS PRODUCTION COMPANY

LEASE LOU WORTHAM

JOHN WEST SURVEYING
HOBBS, NEW MEXICO
(505) 393-3117

LOCATION VERIFICATION MAP



SCALE: 1" = 2000'

CONTOUR INTERVAL: 10'
EUNICE, N.M.

SEC. 11 TWP. 22-S RGE. 37-E

SURVEY N.M.P.M.

COUNTY LEA

DESCRIPTION 1650' FNL & 990' FWL

ELEVATION 3365'

OPERATOR PECOS PRODUCTION COMPANY

LEASE LOU WORTHAM

U.S.G.S. TOPOGRAPHIC MAP
EUNICE, N.M.

JOHN WEST SURVEYING
HOBBS, NEW MEXICO
(505) 393-3117

Pecos Production Company, Inc.
Drilling Prognosis

Well: Lou Wortham No. 7

Location: 1650' FNL & 990' FWL, Section 11, Twp 22-S, Rge 37-E, Lea Co, NM

Elevation: 3365' GL 3376' KB (est) API # 30-025-

H2S: **This well will be drilled through formations with known quantities of H2S. 100 PPM ROE = 156 ft. 500 PPM ROE = 69.5 ft.** Neither of these distances include any form of public area. However, appropriate monitors and warning signs are to be in place and functional at all times.

Notifications: NMOCD – Hobbs Office 505-393-6161.

Notify of spud and 24 hrs prior to cementing any casing or testing BOP's.

Location: Clear and level 160' x 200' location w/ 100' x 80' reserve and 5 x 5' cellar. MIRU.

Surface: Spud w/ fresh water/spud mud. Drill 12-1/4" hole to 1150' or to fit casing tally. TOO. Run 8-5/8" casing w/ Texas Pattern Shoe, insert float, and 10 centralizers spaced every third joint. Cement according to prognosis. WOC 4 hrs. Back off casing and install 8-5/8", 8-R Larkin casinghead. NU 11" stack. Test BOP's and surface casing to 1000 psi.

Production: Drill out w/ 7-7/8" bit. Circulate brine through reserve to minimize washout through salt section. Switch to working pits at +/-3300' and mud up w/ starch for 10 cc water loss. Maintain WL below 10 cc to TD. Condition hole and log. If productive, run 5-1/2" production casing with float shoe and float collar. Centralize shoe joint and every joint through zones of interest. Cement according to prognosis. Set slips and cut 5-1/2" casing. Weld on bell nipple and install Larkin Fig 72 tubinghead.

Logging: If OH logs run -GR-CNL-LDT, DLL-MSFL, TD - 2000' w/ GR-N to Sur

Mud:

Depth	Mud Wt	Visc (sec)	WL (cc)	Remarks
0-1150	8.9	36	NC	Native
1150 - 4800'	10.0 - 10.2	34	10	Brine, then Brine/Starch

Casing

Depth	Length	Size	Wt	Grade	Cplg	Coll S.F.	Tens S.F.
0 - 1150'	1150'	8-5/8"	24#	J-55	STC	2.63	8.8
0 - 4800'	4800'	5-1/2"	15.5#	J-55	STC	1.65	2.97

Cement:

Interval	Slurry	% excess	# sacks	Wt (ppg)	Yield	TOC
Surface	Lead	100	350	12.7	1.89	Surf
	Class "C" w/ 4% gel, 1/4# cello, 2% CaCl.					
	Tail	100	250	14.8	1.32	800
	Class C w/ 2 % CaCl.					
Prod	Lead	50	370	12.7	1.96	Surf
	Halliburton Light Prem Plus w/ 1/4# flocele, 5# salt.					
	Tail	50	340	14.8	1.33	3000

BLOWOUT PREVENTOR ARRANGEMENT

11" SHAFFER TYPE LWS, 3000 psi WP

11" CAMERON SPHERICAL, 3000 psi WP

80 GALLON, 5 STATION KOOMEY ACCUMULATOR

3000 psi WP CHOKE MANIFOLD

