

DISTRICT I  
1825 N. FRANKLIN DR., ROSA, NM 86840  
Phone: (505) 392-6181 Fax: (505) 392-6720

DISTRICT II  
811 S. FIRST ST., ARTESIA, NM 86210  
Phone: (505) 748-1222 Fax: (505) 748-8720

DISTRICT III  
1000 RIO BRAZOS RD., AZTEC, NM 87410  
Phone: (505) 334-8179 Fax: (505) 334-8170

DISTRICT IV  
1820 S. ST. FRANCIS DR., SANTA FE, NM 87506  
Phone: (505) 478-3480 Fax: (505) 478-3482

State of New Mexico  
Energy, Minerals & Natural Resources Department  
**OIL CONSERVATION DIVISION**  
1220 SOUTH ST. FRANCIS DR.  
Santa Fe, New Mexico 87505

Form C-102  
Revised August 1, 2011  
Submit one copy to appropriate  
District Office

☐ AMENDED REPORT

**WELL LOCATION AND ACREAGE DEDICATION PLAT**

API Number 30-025- <b>42858</b>	Pool Code 41440	Pool Name Lusk; Bone Spring
Property Code 308161	Property Name LUSK DEEP UNIT A	Well Number 26Y
OGRID No. 229137	Operator Name COG OPERATING, LLC	Elevation 3542.9'

**Surface Location**

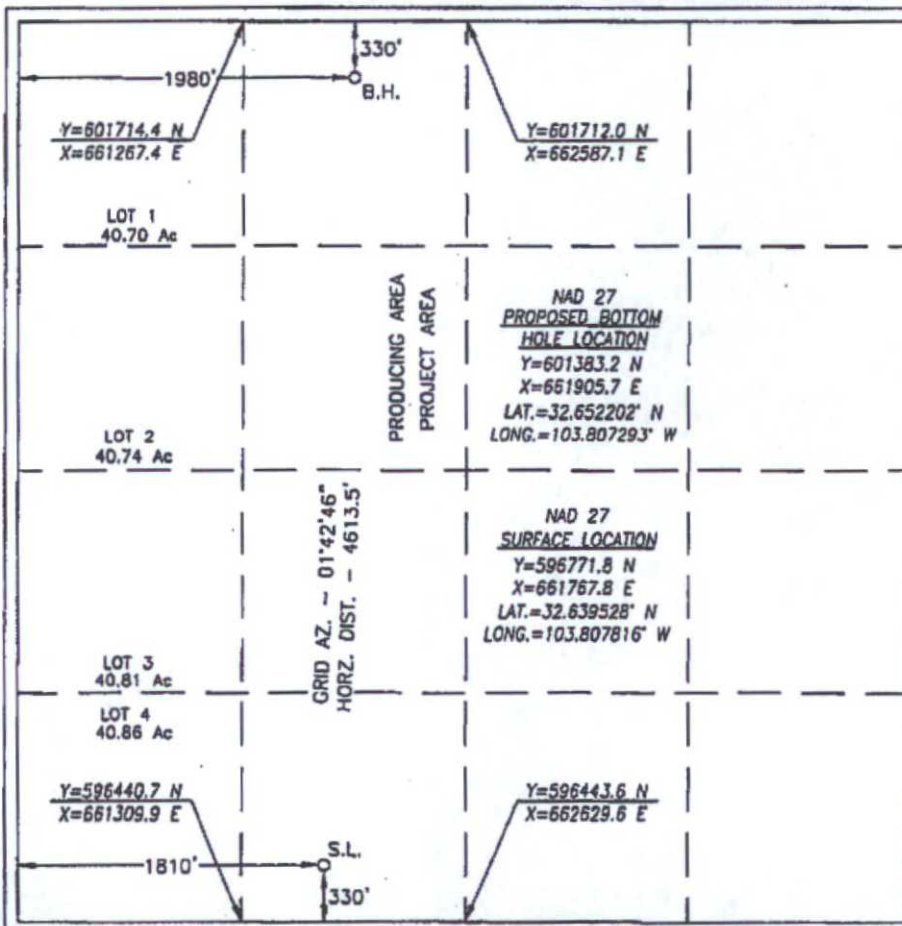
UL or lot No.	Section	Township	Range	Lot Idn	Feet from the	North/South line	Feet from the	East/West line	County
N	19	19-S	32-E		330	SOUTH	1810	WEST	LEA

**Bottom Hole Location If Different From Surface**

UL or lot No.	Section	Township	Range	Lot Idn	Feet from the	North/South line	Feet from the	East/West line	County
C	19	19-S	32-E		330	NORTH	1980	WEST	LEA

Dedicated Acres 160	Joint or Infill	Consolidation Code	Order No.
------------------------	-----------------	--------------------	-----------

NO ALLOWABLE WILL BE ASSIGNED TO THIS COMPLETION UNTIL ALL INTERESTS HAVE BEEN CONSOLIDATED  
OR A NON-STANDARD UNIT HAS BEEN APPROVED BY THE DIVISION



**OPERATOR CERTIFICATION**

I hereby certify that the information herein is true and complete to the best of my knowledge and belief, and that this organization either owns a working interest or unleased mineral interest in the land including the proposed bottom hole location or has a right to drill this well at this location pursuant to a contract with an owner of such mineral or working interest, or to a voluntary pooling agreement or a compulsory pooling order heretofore entered by the Division.

*Melanie J. Wilson* 10/2/15  
Signature Date

Melanie J. Wilson

Printed Name

mwilson@concho.com

E-mail Address

**SURVEYOR CERTIFICATION**

I hereby certify that the well location shown on this plat was plotted from field notes of actual surveys made by me or under my supervision, and that the same is true and correct to the best of my belief.

SEPTEMBER 28, 2015

Date of Survey

Signature & Seal of Professional Surveyor



*Chad L. Harcrow* 9/30/15  
Certificate No. CHAD HARCROW 17777  
W.O. #15-1181 DRAWN BY: WN

OCT 08 2015