

District I
1625 N. French Dr., Hobbs, NM 88240
Phone: (575) 393-6161 Fax: (575) 393-0720
District II
511 S. First St., Artesia, NM 88210
Phone: (575) 748-1283 Fax: (575) 748-9720
District III
1000 Rio Brazos Road, Aztec, NM 87410
Phone: (505) 334-6178 Fax: (505) 334-6170
District IV
1220 S. St. Francis Dr., Santa Fe, NM 87505
Phone: (505) 476-3460 Fax: (505) 476-3462

State of New Mexico
Energy, Minerals & Natural Resources Department
OIL CONSERVATION DIVISION
1220 South St. Francis Dr.
Santa Fe, NM 87505

Form C-102
Revised August 1, 2011
Submit one copy to appropriate
District Office

☐ AMENDED REPORT

WELL LOCATION AND ACREAGE DEDICATION PLAT

¹ API Number	² Pool Code 7320	³ Pool Name Brinninstool; Bone Spring
⁴ Property Code 314792	⁵ Property Name NORTH THISTLE 2 STATE	⁶ Well Number 2H
⁷ OGRID No. 6137	⁸ Operator Name DEVON ENERGY PRODUCTION COMPANY, L.P.	⁹ Elevation 3514.9

¹⁰ Surface Location

UL or lot no.	Section	Township	Range	Lot Idn	Feet from the	North/South line	Feet from the	East/West line	County
2	2	23 S	33 E		505	NORTH	1980	EAST	LEA

¹¹ Bottom Hole Location If Different From Surface

UL or lot no.	Section	Township	Range	Lot Idn	Feet from the	North/South line	Feet from the	East/West line	County
O	2	23 S	33 E		330	SOUTH	2290	EAST	LEA

¹² Dedicated Acres 159.73	¹³ Joint or Infill	¹⁴ Consolidation Code	¹⁵ Order No.
---	-------------------------------	----------------------------------	-------------------------

No allowable will be assigned to this completion until all interests have been consolidated or a non-standard unit has been approved by the division.

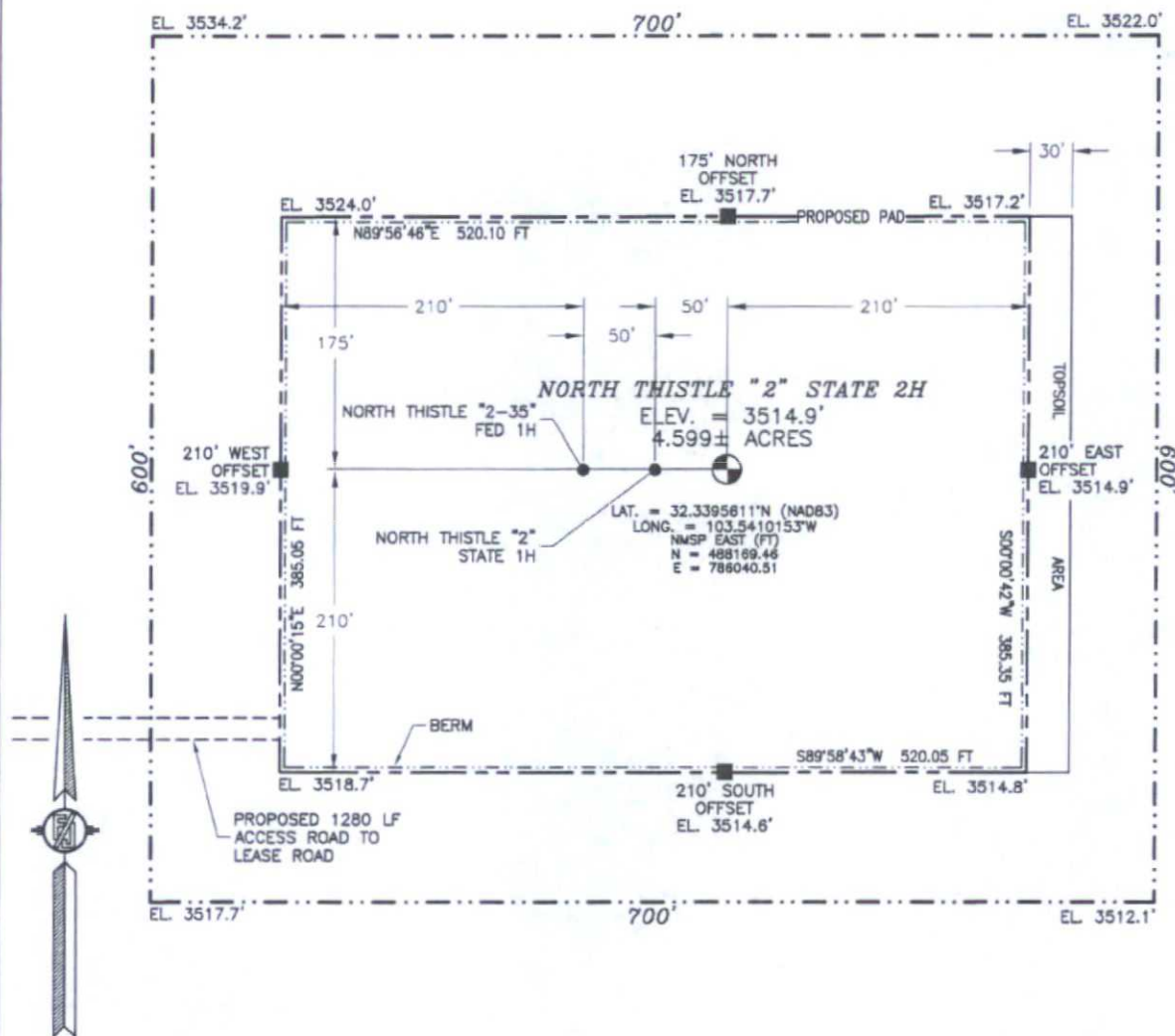
<p>N89°54'10"E 2640.97 FT</p> <p>NW CORNER SEC. 2 LAT. = 32.3409939°N LONG. = 103.5517033°W NMSP EAST (FT) N = 488666.43 E = 782735.71</p> <p>LOT 4</p> <p>W O CORNER SEC. 2 LAT. = 32.3337623°N LONG. = 103.5516971°W NMSP EAST (FT) N = 486035.60 E = 782756.80</p> <p>NOTE: LATITUDE AND LONGITUDE COORDINATES ARE SHOWN USING THE NORTH AMERICAN DATUM OF 1983 (NAD83). LISTED NEW MEXICO STATE PLANE EAST COORDINATES ARE GRID (NAD83). BASIS OF BEARING AND DISTANCES USED ARE NEW MEXICO STATE PLANE EAST COORDINATES MODIFIED TO THE SURFACE.</p> <p>SW CORNER SEC. 2 LAT. = 32.3265050°N LONG. = 103.5516842°W NMSP EAST (FT) N = 483395.41 E = 782780.05</p> <p>589°54'48"W 2639.14 FT</p>		<p>N89°41'51"E 2641.41 FT</p> <p>N O CORNER SEC. 2 LAT. = 32.3409529°N LONG. = 103.5431543°W NMSP EAST (FT) N = 488670.92 E = 785376.16</p> <p>LOT 1</p> <p>NE CORNER SEC. 2 LAT. = 32.3409374°N LONG. = 103.5348038°W NMSP EAST (FT) N = 488684.86 E = 788017.01</p> <p>LOT 2</p> <p>NORTH THISTLE "2" STATE 2H ELEV. = 3514.9' LAT. = 32.3395611°N (NAD83) LONG. = 103.5410153°W NMSP EAST (FT) N = 488169.46 E = 786040.51</p> <p>BOTTOM OF HOLE LAT. = 32.3273658°N LONG. = 103.5420360°W NMSP EAST (FT) N = 483730.43 E = 785758.05</p> <p>SE CORNER SEC. 2 LAT. = 32.3264324°N LONG. = 103.5346254°W NMSP EAST (FT) N = 483407.85 E = 788049.66</p> <p>589°48'58"W 2631.53 FT</p>		<p>¹⁷ OPERATOR CERTIFICATION</p> <p>I hereby certify that the information contained herein is true and complete to the best of my knowledge and belief, and that this organization either owns a working interest or unleased mineral interest in the land including the proposed bottom hole location or has a right to drill this well at this location pursuant to a contract with an owner of such a mineral or working interest, or to a voluntary pooling agreement or a compulsory pooling order heretofore entered by the division.</p> <p><i>Megan Moravec</i> 9/30/2015 Signature Date</p> <p>Megan Moravec, Regulatory Analyst Printed Name</p> <p>Megan.Moravec@dmv.com E-mail Address</p> <p>¹⁸ SURVEYOR CERTIFICATION</p> <p>I hereby certify that the well location shown on this plat was plotted from field notes of actual surveys made by me or under my supervision, and that the same is true and correct to the best of my belief.</p> <p>SEPTEMBER 21, 2015 Date of Survey</p> <p><i>FILIMON F. JARAMILLO</i> Signature and Seal of Professional Surveyor</p> <p>Certificate Number: FILIMON F. JARAMILLO, PLS 12797 SURVEY NO. 4231</p>
<p>100°27'34"W 2631.44 FT</p> <p>100°30'16"W 2640.81 FT</p>		<p>100°21'16"E 2639.08 FT</p> <p>100°21'16"E 2639.08 FT</p>		
<p>100°27'34"W 2631.44 FT</p> <p>100°30'16"W 2640.81 FT</p>		<p>100°21'16"E 2639.08 FT</p> <p>100°21'16"E 2639.08 FT</p>		

Project Area:

OCT 13 2015

SECTION 2, TOWNSHIP 23 SOUTH, RANGE 33 EAST, N.M.P.M.
LEA COUNTY, STATE OF NEW MEXICO
SITE MAP

NOTE: LATITUDE AND LONGITUDE COORDINATES ARE SHOWN USING THE NORTH AMERICAN DATUM OF 1983 (NAD83). LISTED NEW MEXICO STATE PLANE EAST COORDINATES ARE GRID (NAD83). BASIS OF BEARING AND DISTANCES USED ARE NEW MEXICO STATE PLANE EAST COORDINATES MODIFIED TO THE SURFACE



0 12 60 120 240

SCALE 1" = 120'

DIRECTIONS TO LOCATION

FROM THE INTERSECTION OF STATE HIGHWAY 128 AND CR 21 (DELAWARE BASIN ROAD) GO NORTH ON CR 21 APPROX. 6.0 MILES TO A LEASE ROAD ON LEFT (WEST), TURN WEST GO APPROX. 2.4 MILES TO A LEASE ROAD ON RIGHT (NORTH), TURN NORTH GO APPROX. 2.0 MILES TO A FRAC POND, PASS FRAC POND NORTH IS A LEASE ROAD GOING NORTH AND BEGIN UPGRADE ON LEASE ROAD, GO NORTH APPROX. 0.9 MILE TO A ROAD LATH WITH RED & WHITE FLAGGING ON RIGHT (EAST) AND THE END OF UPGRADE, GO EAST FOLLOW ROAD LATHS APPROX. 1280' TO THE SOUTHWEST PAD CORNER FOR THIS LOCATION.

DEVON ENERGY PRODUCTION COMPANY, L.P.

NORTH THISTLE "2" STATE 2H

LOCATED 505 FT. FROM THE NORTH LINE
AND 1980 FT. FROM THE EAST LINE OF

SECTION 2, TOWNSHIP 23 SOUTH,
RANGE 33 EAST, N.M.P.M.

LEA COUNTY, STATE OF NEW MEXICO

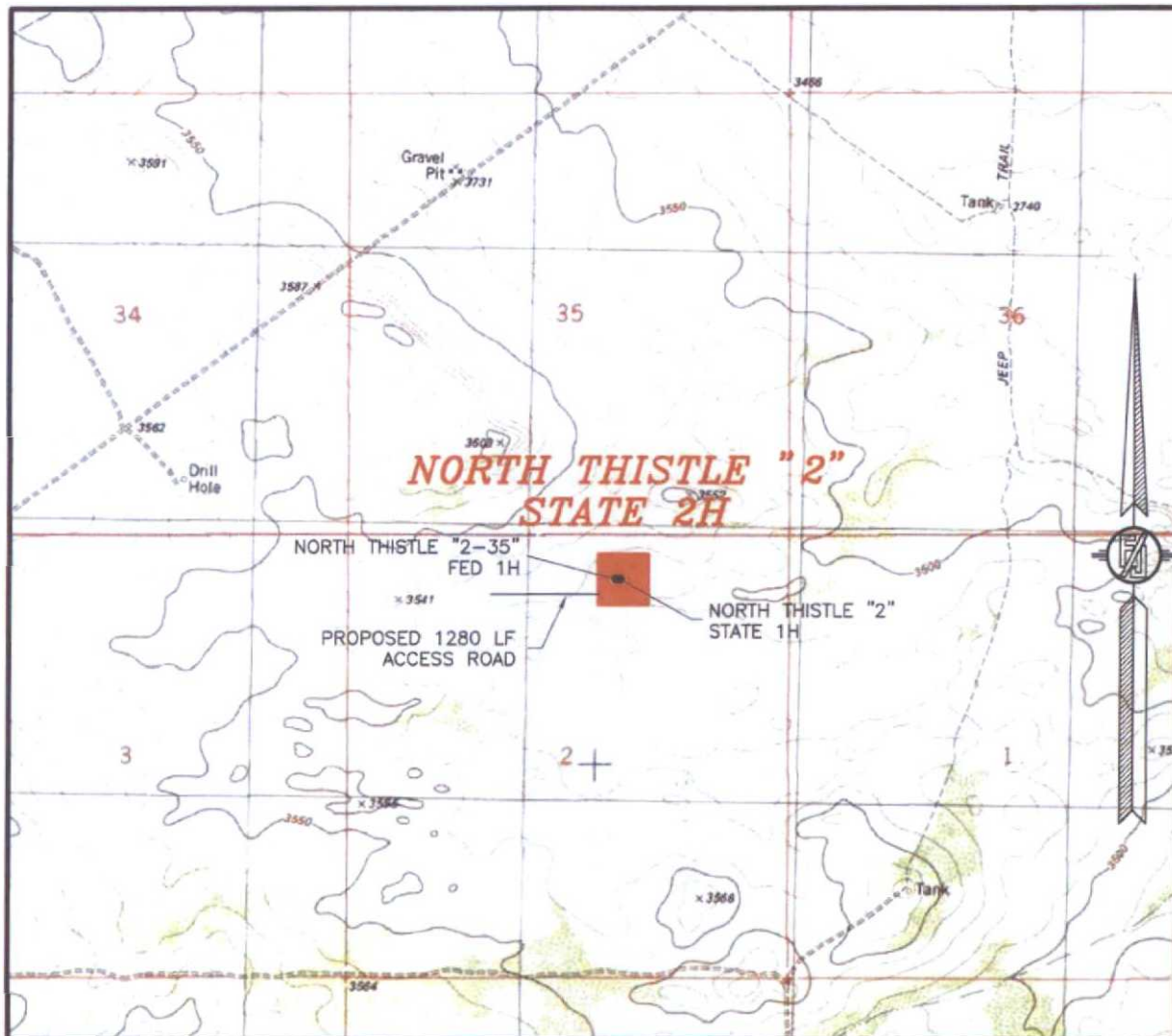
SEPTEMBER 21, 2015

SURVEY NO. 4231

MADRON SURVEYING, INC. 301 SOUTH CANAL (575) 234-3341

CARLSBAD, NEW MEXICO

SECTION 2, TOWNSHIP 23 SOUTH, RANGE 33 EAST, N.M.P.M.
LEA COUNTY, STATE OF NEW MEXICO
LOCATION VERIFICATION MAP



USGS QUAD MAP:
TIP TOP WELLS

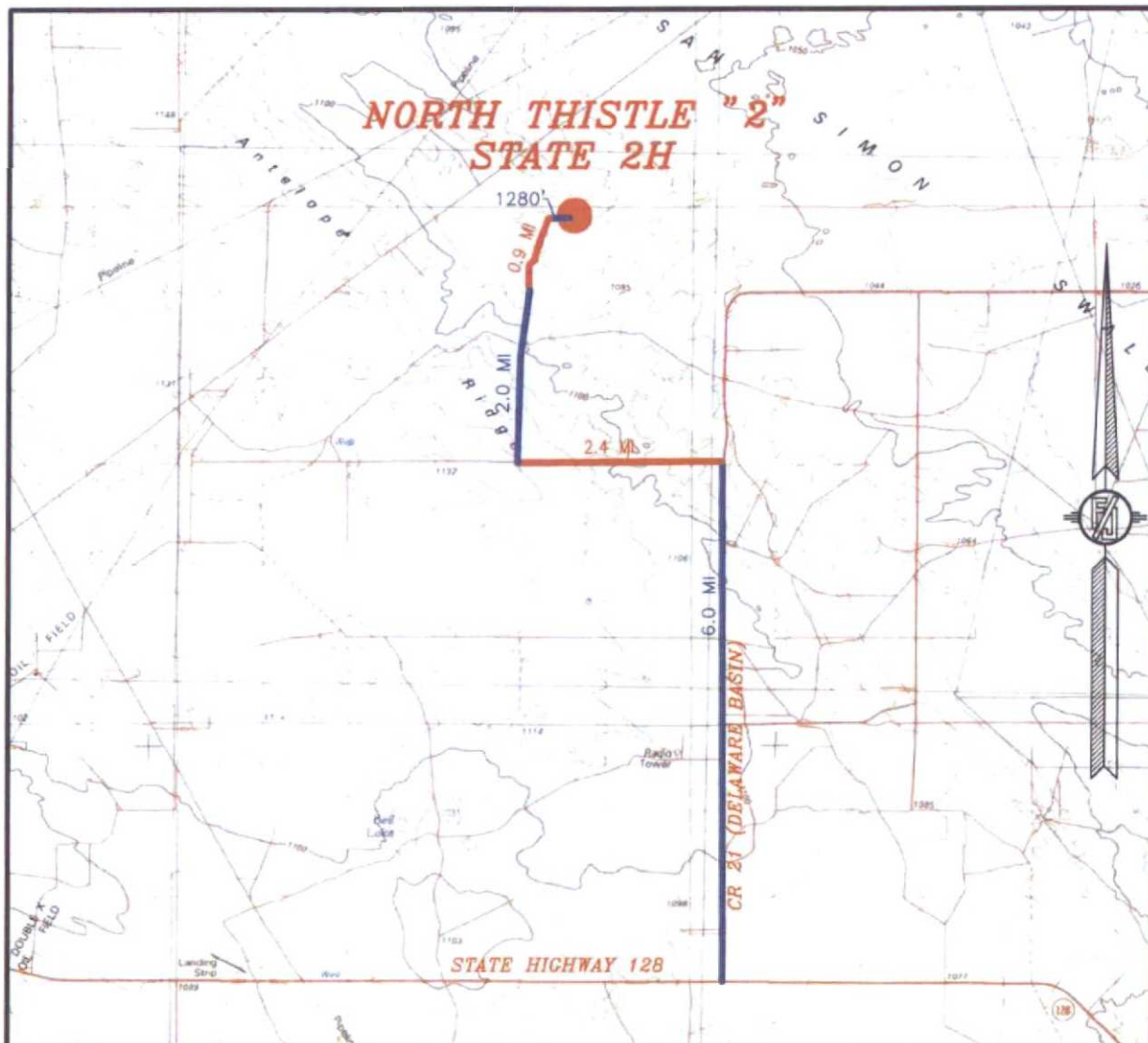
NOT TO SCALE

DEVON ENERGY PRODUCTION COMPANY, L.P.
NORTH THISTLE "2" STATE 2H
LOCATED 505 FT. FROM THE NORTH LINE
AND 1980 FT. FROM THE EAST LINE OF
SECTION 2, TOWNSHIP 23 SOUTH,
RANGE 33 EAST, N.M.P.M.
LEA COUNTY, STATE OF NEW MEXICO

SEPTEMBER 21, 2015

MADRON SURVEYING, INC. 301 SOUTH CANAL (575) 234-3341 CARLSBAD, NEW MEXICO SURVEY NO. 4231

SECTION 2, TOWNSHIP 23 SOUTH, RANGE 33 EAST, N.M.P.M.
LEA COUNTY, STATE OF NEW MEXICO
VICINITY MAP



DISTANCES IN MILES

NOT TO SCALE

DEVON ENERGY PRODUCTION COMPANY, L.P.

NORTH THISTLE "2" STATE 2H

LOCATED 505 FT. FROM THE NORTH LINE
AND 1980 FT. FROM THE EAST LINE OF

SECTION 2, TOWNSHIP 23 SOUTH,
RANGE 33 EAST, N.M.P.M.

LEA COUNTY, STATE OF NEW MEXICO

SEPTEMBER 21, 2015

DIRECTIONS TO LOCATION

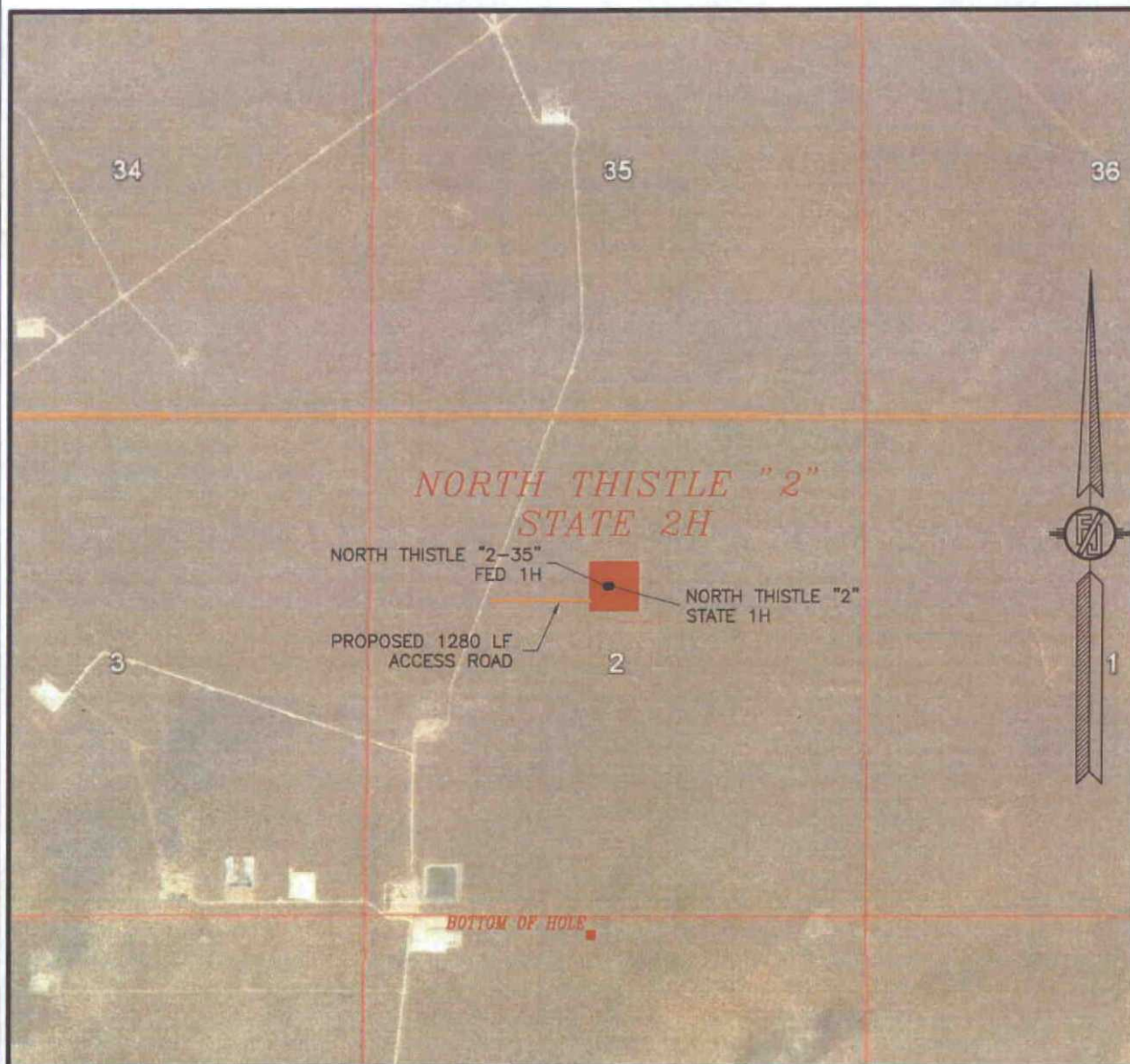
FROM THE INTERSECTION OF STATE HIGHWAY 128 AND CR 21 (DELAWARE BASIN ROAD) GO NORTH ON CR 21 APPROX. 6.0 MILES TO A LEASE ROAD ON LEFT (WEST). TURN WEST GO APPROX. 2.4 MILES TO A LEASE ROAD ON RIGHT (NORTH). TURN NORTH GO APPROX. 2.0 MILES TO A FRAC POND. PASS FRAC POND NORTH IS A LEASE ROAD GOING NORTH AND BEGIN UPGRADE ON LEASE ROAD, GO NORTH APPROX. 0.9 MILE TO A ROAD LATH WITH RED & WHITE FLAGGING ON RIGHT (EAST) AND THE END OF UPGRADE, GO EAST FOLLOW ROAD LATHS APPROX. 1280' TO THE SOUTHWEST PAD CORNER FOR THIS LOCATION.

SURVEY NO. 4231

MADRON SURVEYING, INC. 301 SOUTH CANAL
(575) 234-3341

CARLSBAD, NEW MEXICO

SECTION 2, TOWNSHIP 23 SOUTH, RANGE 33 EAST, N.M.P.M.
LEA COUNTY, STATE OF NEW MEXICO
AERIAL PHOTO



NOT TO SCALE
AERIAL PHOTO:
GOOGLE EARTH
FEBRUARY 2014

DEVON ENERGY PRODUCTION COMPANY, L.P.

NORTH THISTLE "2" STATE 2H

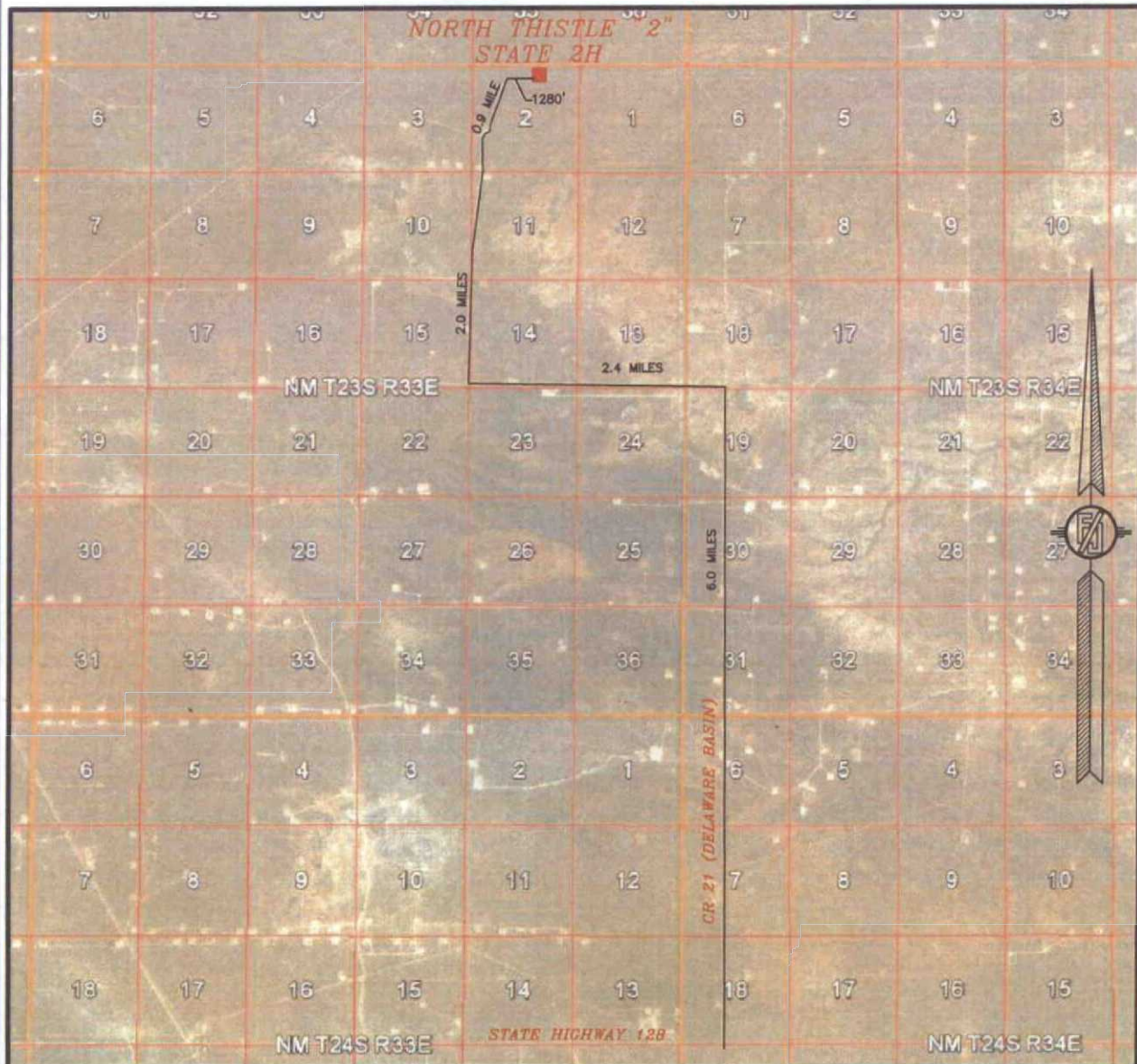
LOCATED 505 FT. FROM THE NORTH LINE
AND 1980 FT. FROM THE EAST LINE OF
SECTION 2, TOWNSHIP 23 SOUTH,
RANGE 33 EAST, N.M.P.M.
LEA COUNTY, STATE OF NEW MEXICO

SEPTEMBER 21, 2015

SURVEY NO. 4231

MADRON SURVEYING, INC. 301 SOUTH CANAL (575) 234-3341 CARLSBAD, NEW MEXICO

SECTION 2, TOWNSHIP 23 SOUTH, RANGE 33 EAST, N.M.P.M.
LEA COUNTY, STATE OF NEW MEXICO
ACCESS AERIAL ROUTE MAP



NOT TO SCALE
AERIAL PHOTO:
GOOGLE EARTH
FEBRUARY 2014

DEVON ENERGY PRODUCTION COMPANY, L.P.

NORTH THISTLE "2" STATE 2H
LOCATED 505 FT. FROM THE NORTH LINE
AND 1980 FT. FROM THE EAST LINE OF
SECTION 2, TOWNSHIP 23 SOUTH,
RANGE 33 EAST, N.M.P.M.
LEA COUNTY, STATE OF NEW MEXICO

SEPTEMBER 21, 2015

SURVEY NO. 4231

MADRON SURVEYING, INC. 301 SOUTH CANAL (575) 234-3341 CARLSBAD, NEW MEXICO