

District I
1625 N. French Dr., Hobbs, NM 88240
Phone: (575) 393-6161 Fax: (575) 393-0720
District II
811 S. First St., Artesia, NM 88210
Phone: (575) 748-1283 Fax: (575) 748-9720
District III
1000 Rio Brazos Road, Aztec, NM 87410
Phone: (505) 334-6178 Fax: (505) 334-6170
District IV
1220 S. St. Francis Dr., Santa Fe, NM 87505
Phone: (505) 476-3460 Fax: (505) 476-3462

State of New Mexico
Energy, Minerals & Natural Resources Department
OIL CONSERVATION DIVISION
1220 South St. Francis Dr.
Santa Fe, NM 87505

HOBBS OCD
OCT 30 2015
RECEIVED

Form C-102
Revised August 1, 2011
Submit one copy to appropriate
District Office

☐ AMENDED REPORT

WELL LOCATION AND ACREAGE DEDICATION PLAT

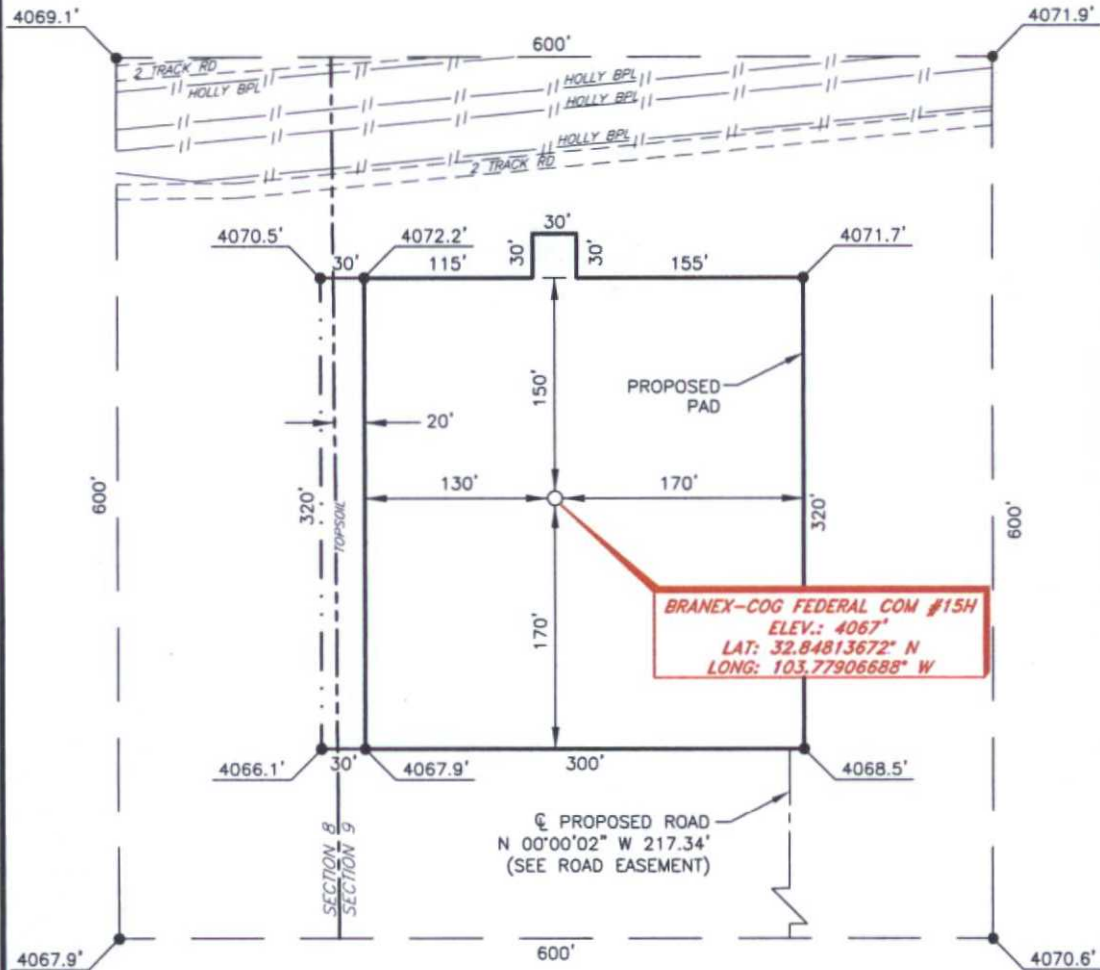
1 API Number 30-025-42906		2 Pool Code 44500		3 Pool Name Maljamar-Yeso West					
4 Property Code 39558		5 Property Name BRANEX-COG FEDERAL COM				6 Well Number 15H			
7 OGRID NO. 229137		8 Operator Name COG OPERATING, LLC				9 Elevation 4067'			
10 Surface Location									
UL or lot no. L	Section 9	Township 17S	Range 32E	Lot Idn	Feet from the 2310	North/South line SOUTH	Feet From the 150	East/West line WEST	County LEA
11 Bottom Hole Location If Different From Surface									
UL or lot no. I	Section 9	Township 17S	Range 32E	Lot Idn	Feet from the 2312	North/South line SOUTH	Feet from the 330	East/West line EAST	County LEA
12 Dedicated Acres 160		13 Joint or Infill		14 Consolidation Code		15 Order No.			

No allowable will be assigned to this completion until all interest have been consolidated or a non-standard unit has been approved by the division.

16 GEODETTIC DATA NAD 27 GRID - NM EAST SURFACE LOCATION N 672710.0 - E 670220.4 LAT: 32.84813672° N LONG: 103.77906688° W BOTTOM HOLE N 672725.6 - E 675024.2			17 CORNER DATA NAD 27 GRID - NM EAST A: FOUND BRASS CAP "1913" N 670400.2 - E 670086.3 B: FOUND BRASS CAP "1913" N 673038.1 - E 670068.2 C: FOUND PK NAIL N 675677.6 - E 670065.6 D: CALCULATED CORNER N 675698.0 - E 675338.3			18 E: FOUND BRASS CAP "1913" N 670415.4 - E 675366.5 F: FOUND 1" IRON PIPE N 670407.8 - E 672725.7 1: CALCULATED POINT N 671719.1 - E 670077.3 2: CALCULATED POINT N 671736.1 - E 675359.4 3: CALCULATED POINT N 673056.7 - E 675352.4		
<p>Project Area Producing Area Estimated Completed Interval: 2310 FSL, 330 FWL DETAIL "A" RRC - Firm No.: TX 10193838 NM 4655451 - Job No.: LS1504167</p>								
17 OPERATOR CERTIFICATION I hereby certify that the information contained herein is true and complete to the best of my knowledge and belief, and that this organization either owns a working interest or unleased mineral interest in the land including the proposed bottom hole location or has a right to drill this well at this location pursuant to a contract with an owner of such a mineral or working interest, or to a voluntary pooling agreement or a compulsory pooling order previously entered by the division. Signature: <u>Kelly J. Holly</u> Printed Name: <u>Kelly J. Holly</u> E-mail Address: <u>kholly@concho.com</u> Date: <u>6-11-15</u>						18 SURVEYOR CERTIFICATION I hereby certify that the well location shown on this plat was plotted from field notes of actual surveys made by me or under my supervision, and that the same is true and correct to the best of my belief. Date of Survey: <u>4-29-2015</u> Signature and Seal of Professional Surveyor: <u>Robert M. Howett</u> Certificate Number: <u>19680</u>		

COG OPERATING, LLC

BRANEX-COG FEDERAL COM #15H
(2310' FSL & 150' FWL)
SECTION 9, T17S, R32E
N. M. P. M., LEA CO., NEW MEXICO



DIRECTIONS TO LOCATION

From the intersection U. S. Hwy. 82 and L-126 (Maljamar Road);
Go South on L-126 approx. 0.6 miles to a lease road on the right;
Turn right on lease road and go Southwest approx. 0.8 miles to a lease road on the right;
Turn right and go North approx. 0.3 miles to a lease road on the left;
Turn left and go West for approx. 0.2 miles to proposed road.
Location is approx. 420 feet Northwest proposed road.

SCALE: 1" = 100'
0 50 100
BEARINGS ARE
NAD 27 GRID - NM EAST
DISTANCES ARE
GROUND.

Firm No.: TX 10193838 NM 4655451

Copyright 2015 - All Rights Reserved

NO.	REVISION	DATE
JOB NO.:	LS1504167	
DWG. NO.:	1504167PAD	

RRC

308 W. BROADWAY ST., HOBBS, NM 88240 (575) 964-8200

SCALE: 1" = 100'
DATE: 4-29-2015
SURVEYED BY: BC/AS
DRAWN BY: CMJ
APPROVED BY: RMH
SHEET : 1 OF 1

VICINITY MAP

NOT TO SCALE



*SECTION 9, TWP. 17 SOUTH, RGE. 32 EAST,
N. M. P. M., LEA CO., NEW MEXICO*

OPERATOR: COG Operating, LLC
LEASE: Branex-COG Federal Com
WELL NO.: 15H

LOCATION: 2310' FSL & 150' FWL
ELEVATION: 4067'

Firm No.: TX 10193838 NM 4655451

Copyright 2014 - All Rights Reserved

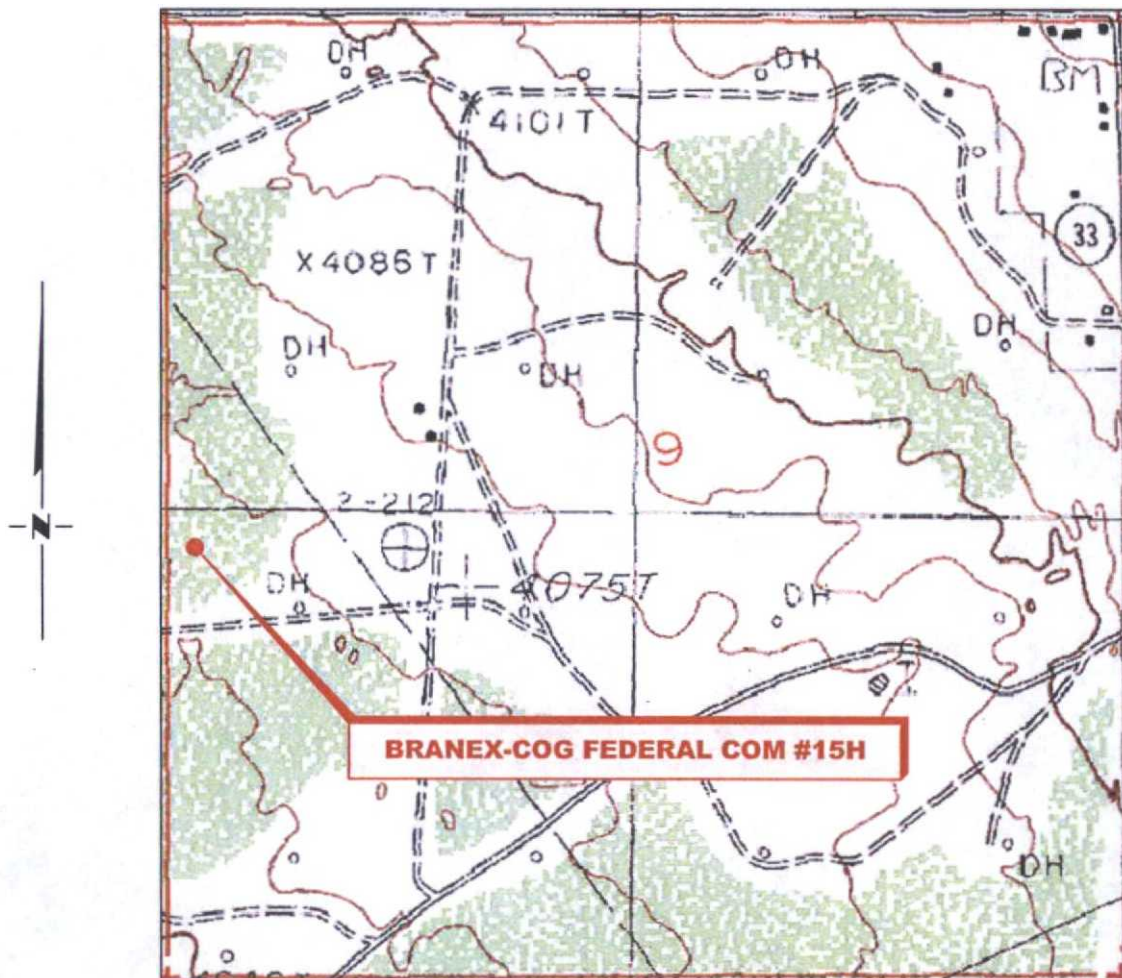
NO.	REVISION	DATE
JOB NO.:	LS1504167	
DWG. NO.:	1504167VM	

RRC

308 W. BROADWAY ST., HOBBS, NM 88240 (575) 964-8200

SCALE: NTS
DATE: 4-29-2015
SURVEYED BY: BK/AS
DRAWN BY: CMJ
APPROVED BY: RMH
SHEET : 1 OF 1

LOCATION VERIFICATION MAP



SECTION 9, TWP. 17 SOUTH, RGE. 32 EAST,
N. M. P. M., LEA CO., NEW MEXICO

OPERATOR: COG Operating, LLC
LEASE: Branex-COG Federal Com
WELL NO.: 15H
ELEVATION: 4067'

LOCATION: 2310' FSL & 150' FWL
CONTOUR INTERVAL:
USGS TOPO. SOURCE MAP:
Maljamar, NM (P. E. 1985)

Firm No.: TX 10193838 NM 4655451

Copyright 2014 - All Rights Reserved

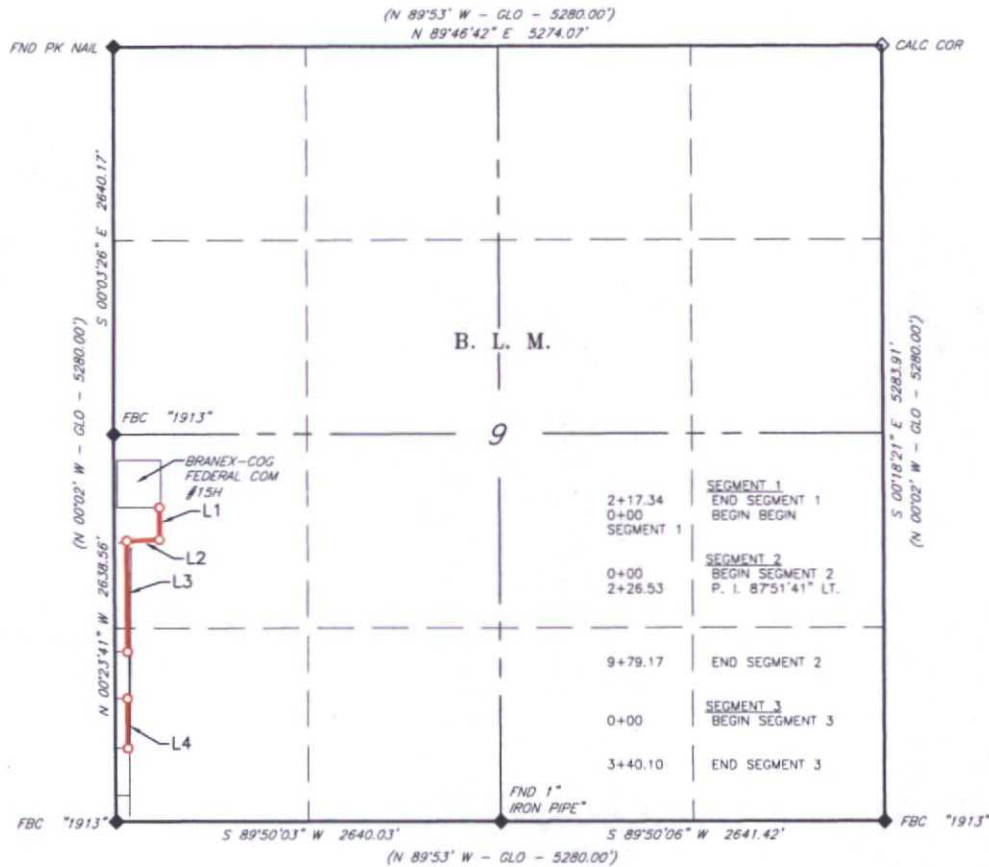
NO.	REVISION	DATE
JOB NO.:	LS1504167	
DWG. NO.:	1504167LVM	

RRC

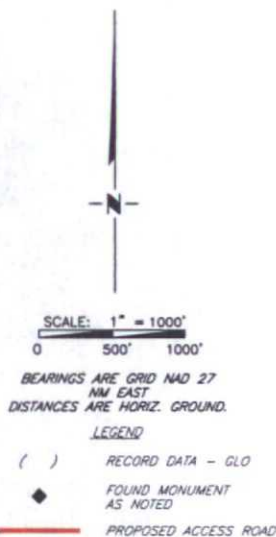
308 W. BROADWAY ST., HOBBS, NM 88240 (575) 964-8200

SCALE: 1" = 1000'
DATE: 4-29-2015
SURVEYED BY: BK/AS
DRAWN BY: CMJ
APPROVED BY: RMH
SHEET : 1 OF 1

COG OPERATING, LLC
OVERALL FOR PROPOSED ACCESS ROADS FOR
THE BRANEX-COG FEDERAL COM #15H, #17H, & #28H
SECTION 9, T17S, R32E,
N. M. P. M., LEA CO., NEW MEXICO



LINE TABLE		
LINE	BEARING	LENGTH
L1	N 00°00'02" W	217.34'
L2	S 87°27'26" W	226.53'
L3	S 00°24'15" E	752.64'
L4	S 00°45'01" E	340.10'



Firm No.: TX 10193838 NM 4655451

Copyright 2014 - All Rights Reserved

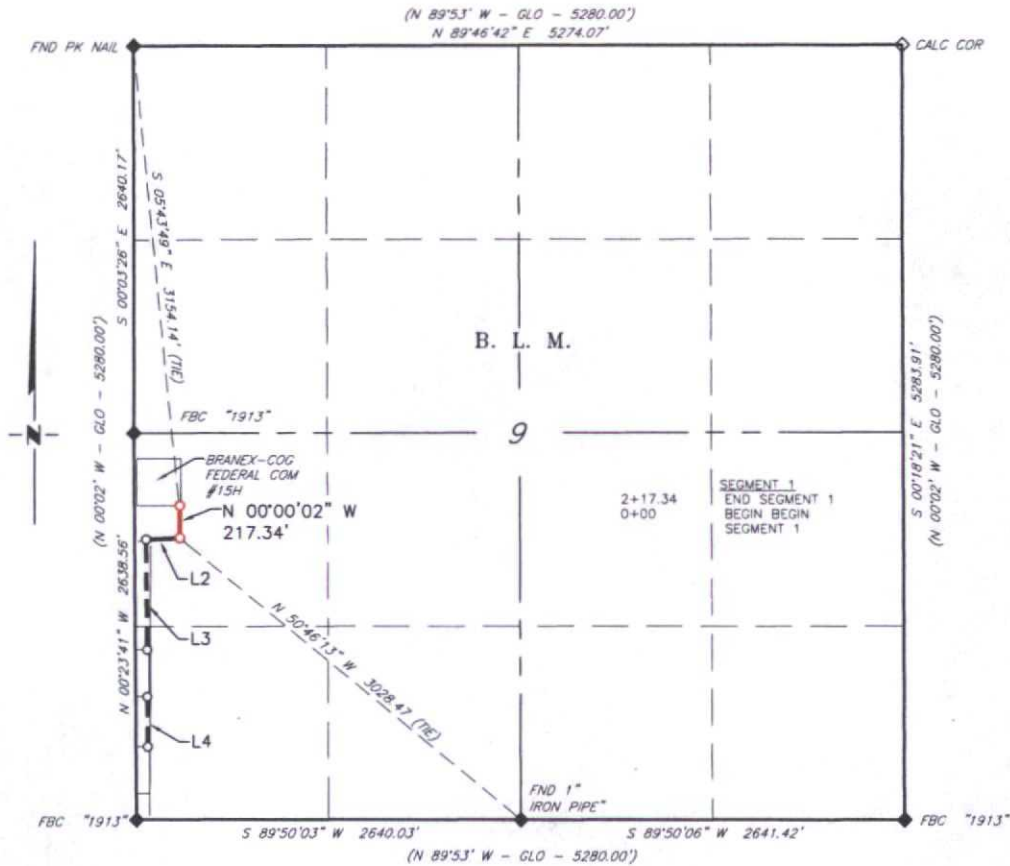
NO.	REVISION	DATE
JOB NO.:	LS1504167	
DWG. NO.:	1504167-1	

RRC

308 W. BROADWAY ST., HOBBS, NM 88240 (575) 964-8200

SCALE: 1" = 1000'
DATE: 4-29-2015
SURVEYED BY: GB/ER
DRAWN BY: CMJ
APPROVED BY: RMH
SHEET : 1 OF 4

**COG OPERATING, LLC
PROPOSED ACCESS ROAD FOR
THE BRANEX-COG FEDERAL COM #15H
SECTION 9, T17S, R32E,
N. M. P. M., LEA CO., NEW MEXICO**



DESCRIPTION SEGMENT 1

A strip of land 30 feet wide, being 217.34 feet or 13.172 rods in length, lying in Section 9, Township 17 South, Range 32 East, N. M. P. M., Lea County, New Mexico, being 15 feet left and 15 feet right of the following described survey of a centerline across B. L. M. lands:

BEGINNING at Engr. Sta 0+00, a point in the Southwest quarter of Section 9, which bears N 50°46'13" W, 3,028.47 feet from a 1" iron pipe, found for the South quarter corner of Section 9;

Thence N 00°00'02" W, 217.34 feet, to the End of Survey, a point which bears S 05°43'49" E, 3,154.14 feet from a PK nail, found for the Northwest corner of Section 9;

Said strip of land contains 0.150 acres, more or less and is allocated by forties as follows:

NW 1/4 SW 1/4 13.172 Rods 0.150 Acres

SCALE: 1" = 1000'
0 500' 1000'
BEARINGS ARE GRID NAD 27
NM EAST
DISTANCES ARE HORIZ. GROUND.
LEGEND
() RECORD DATA - GLO
◆ FOUND MONUMENT
AS NOTED
— PROPOSED ACCESS ROAD

I, R. M. Howett, a N. M. Professional Surveyor, hereby certify that I prepared this plat from an actual survey made on the ground under my direct supervision, said survey and plat meet the Min. Stds. for Land Surveying in the State of N. M. and are true and correct to the best of my knowledge and belief.

Robert M. Howett
Robert M. Howett NM PS 19680



Firm No.: TX 10193838 NM 4655451

Copyright 2014 - All Rights Reserved

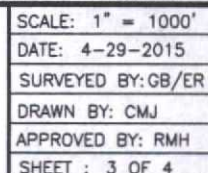
NO.	REVISION	DATE
JOB NO.:	LS1504167	
DWG. NO.:	1504167-2	

RRC

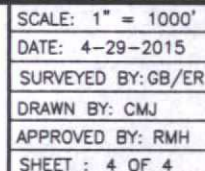
308 W. BROADWAY ST., HOBBS, NM 88240 (575) 964-8200

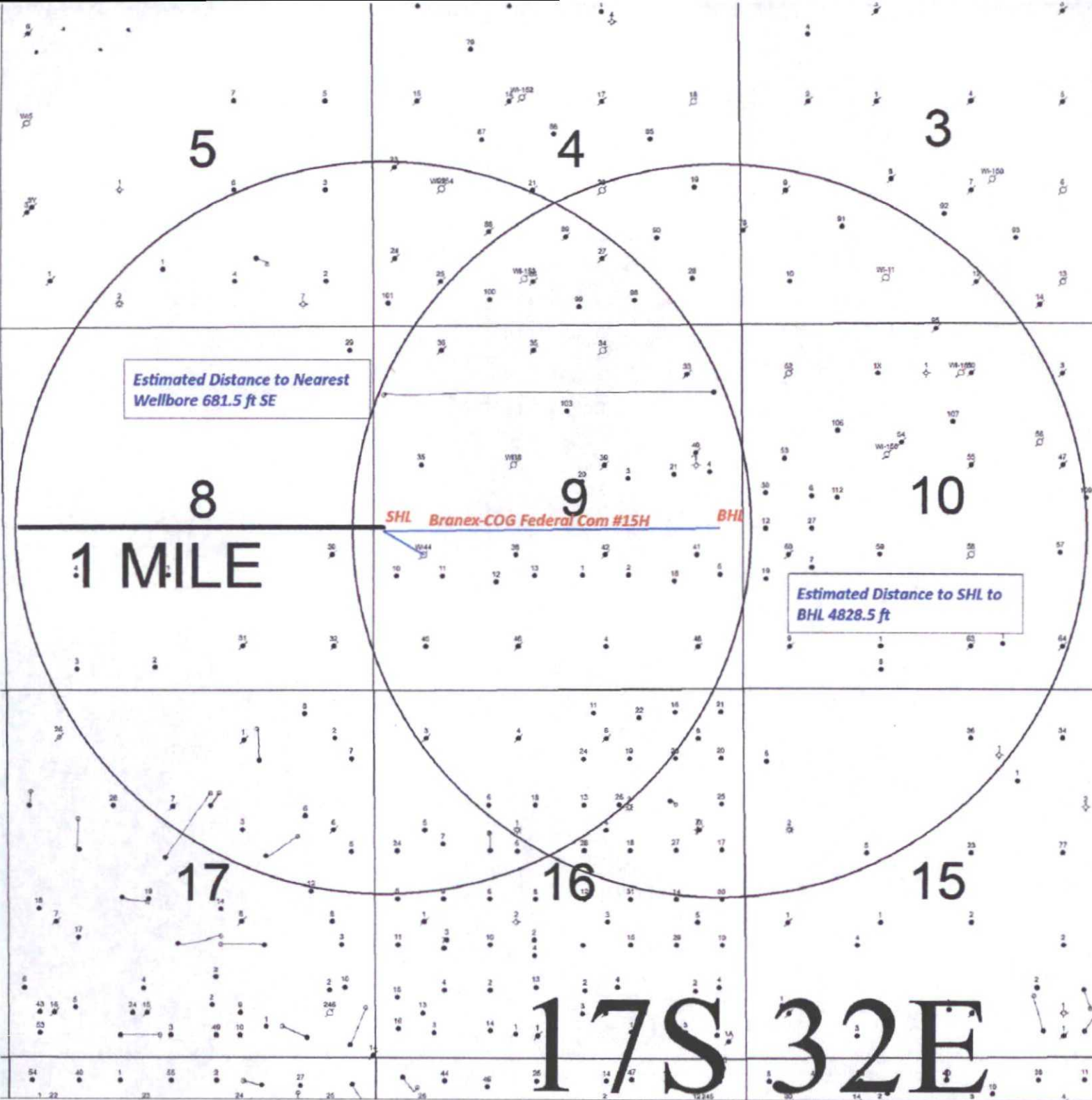
SCALE: 1" = 1000'
DATE: 4-29-2015
SURVEYED BY: GB/ER
DRAWN BY: CMJ
APPROVED BY: RMH
SHEET : 2 OF 4

(N 89°53' W - GLO - 5280.00')
N 89°46'42" E 5274.07'



(N 89°53' W - GLO - 5280.00')
N 89°46'42" E 5274.07'





SENM Shelf Area
Branex-COG Federal Com 15H

SEC. 9, T17S - R32E SHL 2310 FSL 150 FWL, UNIT L
SEC. 9, T17S - R32E SHL 2312 FSL 330 FEL, UNIT I

Author:

Date:



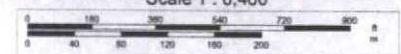
Data use subject to license.

© DeLorme. XMap® 7.

www.delorme.com



Scale 1 : 6,400



1" = 533.3 ft

Data Zoom 15-0