

District I  
1625 N French Dr. Hobbs, NM 88240  
Phone (575) 393-6161 Fax (575) 393-0720  
District II  
811 S First St., Artesia, NM 88210  
Phone (575) 748-1283 Fax (575) 748-9720  
District III  
1000 Rio Brazos Road, Aztec, NM 87410  
Phone (505) 334-6178 Fax (505) 334-6170  
District IV  
1220 S. St. Francis Dr., Sante Fe, NM 87505  
Phone (505) 476-3460 Fax (505) 476-3462

State of New Mexico  
Energy, Minerals & Natural Resources  
Department  
OIL CONSERVATION DIVISION  
1220 South St. Francis Dr.  
Sante Fe, NM 87505

FORM C-102  
Revised August 1, 2011  
Submit one copy to appropriate  
District Office

AMENDED REPORT

WELL LOCATION AND ACREAGE DEDICATION PLAT

<sup>1</sup> API Number 30-025-42924		<sup>2</sup> Pool Code 98097		<sup>3</sup> Pool Name WC-025 G-09 S263327G; Upper Wolfcamp	
<sup>4</sup> Property Code 39814		<sup>5</sup> Property Name OPHELIA 27			<sup>6</sup> Well Number #706H
<sup>7</sup> OGRID No. 7377		<sup>8</sup> Operator Name EOG RESOURCES, INC.			<sup>9</sup> Elevation 3266'

<sup>10</sup>Surface Location

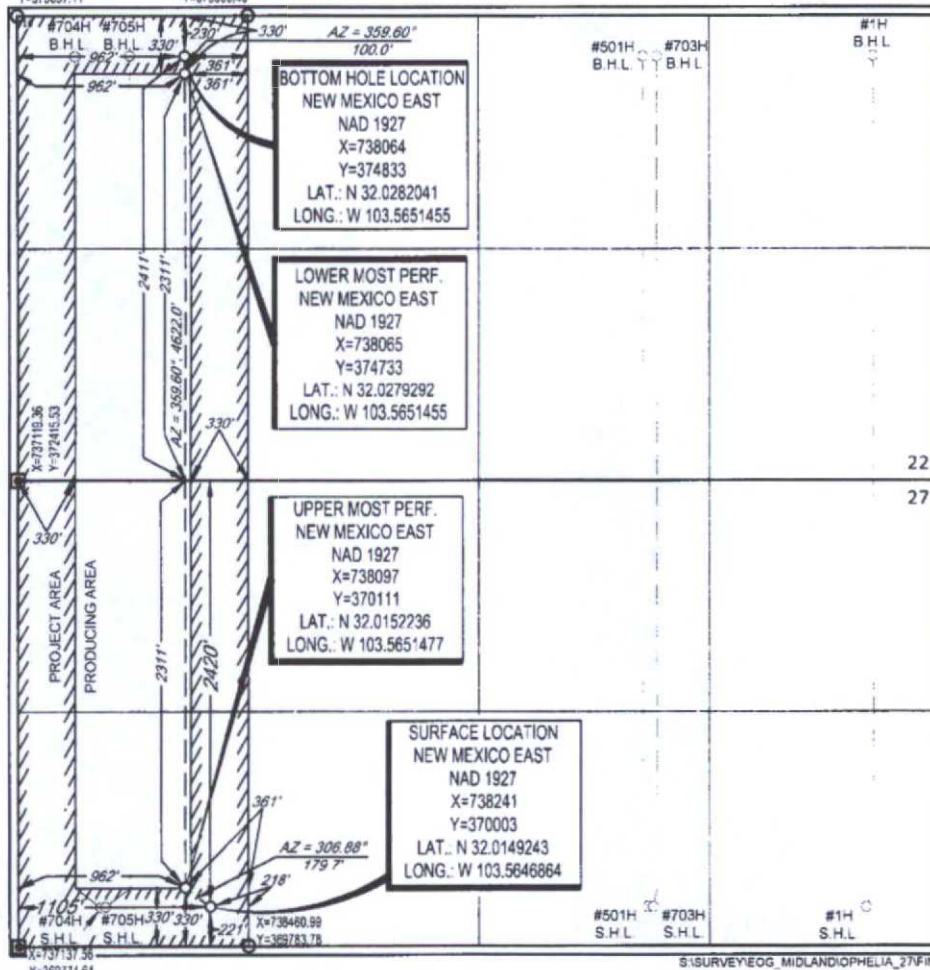
L or lot no.	Section	Township	Range	Lot Idn	Feet from the	North/South line	Feet from the	East/West line	County
E	27	26-S	33-E	-	2420'	NORTH	1105'	WEST	LEA

L or lot no.	Section	Township	Range	Lot Idn	Feet from the	North/South line	Feet from the	East/West line	County
L	22	26-S	33-E	-	2411'	SOUTH	962'	WEST	LEA

<sup>11</sup> Dedicated Acres 160.00	<sup>12</sup> Joint or Infill	<sup>13</sup> Consolidation Code	<sup>14</sup> Order No.
---	-------------------------------	----------------------------------	-------------------------

No allowable will be assigned to this completion until all interests have been consolidated or a non-standard unit has been approved by the division.

X=737100.77 X=738423.62  
Y=375057.11 Y=375065.48



**17 OPERATOR CERTIFICATION**  
I hereby certify that the information contained herein is true and complete to the best of my knowledge and belief, and that this organization either owns a working interest or unleased mineral interest in the land including the proposed bottom hole location or has a right to drill this well at this location pursuant to a contract with an owner of such a mineral or working interest, or to a voluntary pooling agreement or a compulsory pooling order heretofore entered by the division.

Signature: Stan Wagner Date: 11/5/15  
Printed Name: Stan Wagner  
E-mail Address: \_\_\_\_\_

**18 SURVEYOR CERTIFICATION**  
I hereby certify that the well location shown on this plat was plotted from fluid notes of actual surveys made by me or under my supervision, and that the same is true to the best of my belief.

Date of Survey: 09/18/2015  
Signature: [Signature]  
Professional Surveyor Seal: MICHAEL BROWN, NEW MEXICO, 18329, PROFESSIONAL SURVEYOR  
Certificate Number: \_\_\_\_\_

NOV 09 2015

**Permit Information:**

Well Name: Ophelia 27 No. 706H

**Location:**

SL: 2420' FNL &amp; 1105' FWL, Section 27, T-26-S, R-33-E, Lea Co., N.M.

BHL: 2411' FSL &amp; 962' FWL, Section 22, T-26-S, R-33-E, Lea Co., N.M.

**Casing Program:**

Hole Size	Interval	Csg OD	Weight	Grade	Conn	DF <sub>min</sub> Collapse	DF <sub>min</sub> Burst	DF <sub>min</sub> Tension
12.25"	0 - 1,100'	10.75"	40.5#	J55	STC	1.125	1.25	1.60
8.75"	0-10,750'	7.625"	29.7#	HCP-110	LTC	1.125	1.25	1.60
6.125"	0'-17,189'	4.5"	13.5#	HCP-110	BTC	1.125	1.25	1.60

**Cement Program:**

Depth	No. Sacks	Wt. ppg	Yld Ft <sup>3</sup> /ft	Slurry Description
1,100'	600	13.5	1.73	Class C + 4.0% Bentonite + 0.6% CD-32 + 0.5% CaCl <sub>2</sub> + 0.25 lb/sk Cello-Flake (TOC @ Surface)
	200	14.8	1.34	Class C + 0.6% FL-62 + 0.25 lb/sk Cello-Flake + 0.2% Sodium Metasilicate
10,750' DV Tool @ 5,000'	350	10.8	3.68	Stage 1 Lead: Class C + 5% Gypsum + 30 pps SFA + 0.4% CPT-503P + 3.5% CPT-45 + 0.25% CPT-35 + 0.85% CPT-20 + 0.85% Citric Acid (TOC @ Surface)
	250	15.6	1.18	Stage 1 Tail: Class H + 0.2% CPT-51 + 0.3% CPT-20
	650	12.7	1.90	Stage 2 Lead: Class C + 3% Salt + 0.6% Gel + 0.5% CPT-45 + 0.1% CPT-20 + 0.1% Citric Acid (TOC @ Surface)
	200	14.8	1.33	Stage 2 Tail: Class C + 0.2% CPT-19
17,189'	600	13.5	1.51	Class H + 3% Salt + 1% Bentonite + 0.35% CPT-19 + 0.80% CPT-15 + 0.25% CPT-503P + 0.40% CPT-35 (TOC @ 10,250')

**Mud Program:**

Depth	Type	Weight (ppg)	Viscosity	Water Loss
0 - 1,100'	Fresh - Gel	8.6-8.8	28-34	N/c
1,100' - 10,750'	Oil Base	8.7-9.4	58-68	N/c - 6
10,750' - 11,904'	Oil Base	8.7-9.4	58-68	N/c - 6
11,904' - 17,189' Lateral	Oil Base	9.0-9.5	58-68	N/c - 6

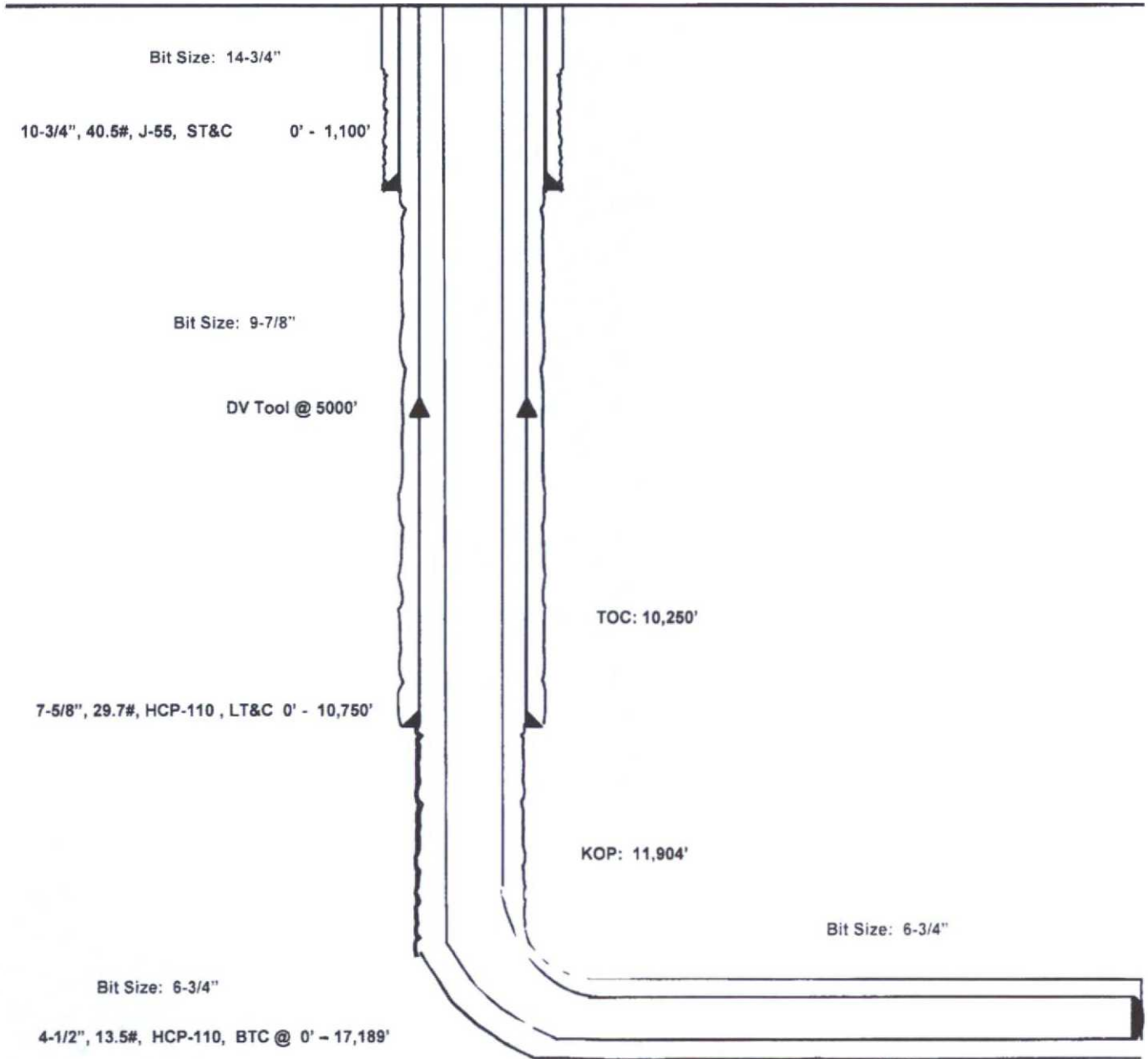
# Ophelia 27 #706H

Lea County, New Mexico  
Proposed Wellbore

2420' FNL  
1105' FWL  
Section 27  
T-26-S, R-33-E

API: 30-025-\*\*\*\*\*

KB: 3,291'  
GL: 3,266'



Lateral: 17,189' MD, 12,390' TVD  
BH Location: 2411' FSL & 962' FWL  
Section 22  
T-26-S, R-33-E



Lea County, NM (NAD 27 NME)

Ophelia 27 #706H

Precision 612

Plan #0.1



PROJECT DETAILS: Lea County, NM (NAD 27 NME)  
Geodetic System: US State Plane 1927 (Exact solution)  
Datum: NAD 1927 (NADCON CONUS)  
Ellipsoid: Clarke 1866  
Zone: New Mexico East 3001  
System Datum: Mean Sea Level

WELL DETAILS: #706H  
Ground Level: 3266.0  
KB = 28 @ 320' Bush (Precision 612)  
Northing: 370003.00  
Easting: 738241.00  
Latitude: 32° 0' 53.723 N  
Longitude: 103° 33' 52.871 W

Sec	MD	Inc	Asl	TVD	+N-S	+E-W	Clng	TFace	VSec	Target	Annotation
1	0.0	0.00	0.00	0.0	0.0	0.0	0.00	0.00	0.0		
2	4800.0	0.00	0.00	4800.0	0.0	0.0	0.00	0.00	0.0		
3	4808.6	1.30	217.90	4690.6	-2.0	-1.8	1.30	217.90	-1.9		
4	11904.7	1.70	217.80	11901.8	-171.0	-132.1	0.00	0.00	-168.0		
5	12865.8	90.00	359.80	12390.0	306.3	-165.4	12.00	141.89	311.4		
6	17169.8	90.00	359.80	12390.0	4830.0	-177.0	0.00	0.00	4833.2		PBH/Ophelia 27 #706H

CASING DETAILS		WELLBORE TARGET DETAILS (MAP CO-ORDINATES)			
No casing data is available		Name	TVD	+N-S	+E-W
		FTW/Ophelia 27 #706H	12390.0	306.0	-164.0
		PBH/Ophelia 27 #706H	12390.0	4830.0	-177.0
				Northing	Easting
				370111.00	738097.00
				374823.00	738094.00

