

HOBBS OCD

NOV 16 2015

District I
1625 N. French Dr., Hobbs, NM 88240
Phone: (575) 393-6161 Fax: (575) 393-0730

District II
811 S. First St., Artesia, NM 88210
Phone: (575) 748-1283 Fax: (575) 748-9720

District III
1060 Rio Brazos Road, Aztec, NM 87410
Phone: (505) 334-6178 Fax: (505) 334-6170

District IV
1220 S. St. Francis Dr., Santa Fe, NM 87505
Phone: (505) 476-3460 Fax: (505) 476-3462

State of New Mexico
Energy, Minerals & Natural Resources Department
OIL CONSERVATION DIVISION
1220 South St. Francis Dr.
Santa Fe, NM 87505

RECEIVED

Form C-102

Revised August 1, 2011

Submit one copy to appropriate

District Office

☐ AMENDED REPORT

WELL LOCATION AND ACREAGE DEDICATION PLAT

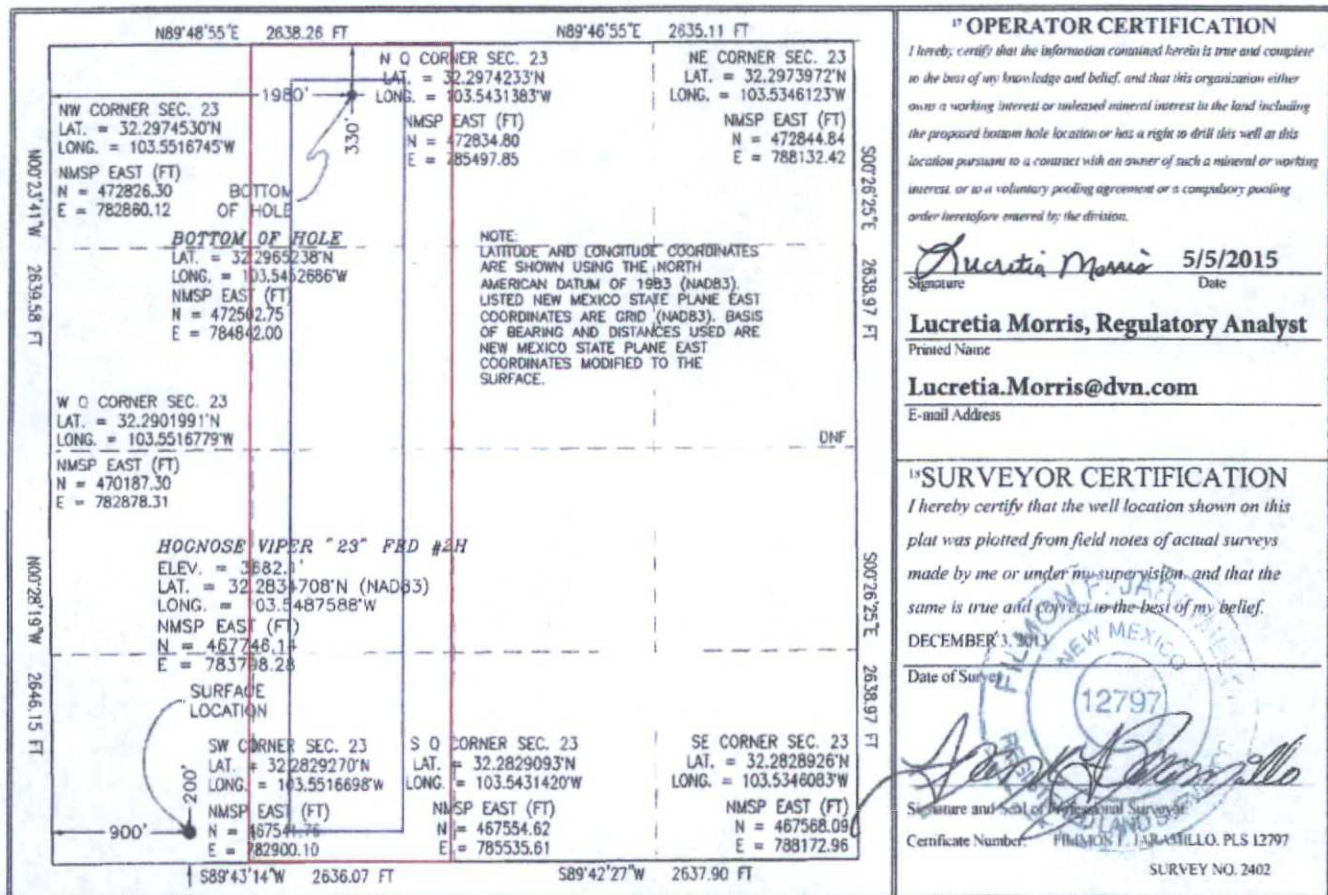
| | | | | | |
|--|--|--|--|--|---|
| ¹ API Number 30-025-41976 | | ² Pool Code 5150 | | ³ Pool Name Bell Lake; Bone Spring, North | |
| ⁴ Property Code 313495 | | ⁵ Property Name HOGNOSE VIPER 23 FED | | | ⁶ Well Number 2H |
| ⁷ OGRID No. 6137 | | ⁸ Operator Name DEVON ENERGY PRODUCTION COMPANY, L.P. | | | ⁹ Elevation 3682.1 |

| ¹⁰ Surface Location | | | | | | | | | |
|--------------------------------|----------------------|-------------------------|----------------------|---------|-----------------------------|----------------------------------|-----------------------------|-------------------------------|----------------------|
| UL or lot no. M | Section 23 | Township 23 S | Range 33 E | Lot Idn | Feet from the 200 | North/South line SOUTH | Feet from the 900 | East/West line WEST | County LEA |

| ¹¹ Bottom Hole Location If Different From Surface | | | | | | | | | |
|--|----------------------|-------------------------|----------------------|---------|-----------------------------|----------------------------------|------------------------------|-------------------------------|----------------------|
| UL or lot no. C | Section 23 | Township 23 S | Range 33 E | Lot Idn | Feet from the 330 | North/South line NORTH | Feet from the 1980 | East/West line WEST | County LEA |

| | | | |
|---|-------------------------------|----------------------------------|-------------------------|
| ¹² Dedicated Acres 160 | ¹³ Joint or Infill | ¹⁴ Consolidation Code | ¹⁵ Order No. |
|---|-------------------------------|----------------------------------|-------------------------|

No allowable will be assigned to this completion until all interests have been consolidated or a non-standard unit has been approved by the division.



PP: 200' FSL & 900' FWL, Sec 23, T23S, R33E

Project Area:

Producing Area:

NOV 23 2015