

DISTRICT I
1423 N. French Dr., Hobbs, NM 88240
Phone: (575) 393-6161 Fax: (575) 393-0720
DISTRICT II
811 S. First St., Artesia, NM 88210
Phone: (575) 748-1283 Fax: (575) 748-9720
DISTRICT III
1000 Rio Bravo Rd., Aztec, NM 87410
Phone: (505) 334-6178 Fax: (505) 334-6170
DISTRICT IV
1220 S. St. Francis Dr., Santa Fe, NM 87505
Phone: (505) 476-3460 Fax: (505) 476-3462

State of New Mexico
Energy, Minerals & Natural Resources Department
OIL CONSERVATION DIVISION
1220 South St. Francis Dr.
Santa Fe, New Mexico 87505

Form C-102
Revised August 1, 2011
Submit one copy to appropriate
District Office
☐ AMENDED REPORT

WELL LOCATION AND ACREAGE DEDICATION PLAT

API Number 30-025-35788	Pool Code 49680	Pool Name PEARL BONE SPRING
Property Code 49680	Property Name TORO "21" STATE	Well Number 2
OGRID No. 246289	Operator Name RKI EXPLORATION & PRODUCTION	Elevation 3763'

Surface Location

UL or lot no.	Section	Township	Range	Lot Idn	Feet from the	North/South line	Feet from the	East/West line	County
J	21	19 S	35 E		2310	SOUTH	2310	EAST	LEA

Bottom Hole Location If Different From Surface

UL or lot no.	Section	Township	Range	Lot Idn	Feet from the	North/South line	Feet from the	East/West line	County

Dedicated Acres 40	Joint or Infill	Consolidated Code	Order No.
------------------------------	-----------------	-------------------	-----------

No allowable will be assigned to this completion until all interests have been consolidated or a non-standard unit has been approved by the division.

		N1/4 COR SEC 21 NMSP-E (NAD 83) N (Y) = 602497.6' E (X) = 809431.4' LAT.: 32°39'11.85"N LONG.: 103°27'44.14"W NMSP-E (NAD 27) N (Y) = 602434.2' E (X) = 768250.9' LAT.: 32°35'31.667"N LONG.: 103.4617722"W	
			E1/4 COR SEC 21 NMSP-E (NAD 83) N (Y) = 599871.5' E (X) = 812090.4' LAT.: 32°38'45.65"N LONG.: 103°27'13.30"W NMSP-E (NAD 27) N (Y) = 599808.2' E (X) = 770909.8' LAT.: 32.6458860"N LONG.: 103.4532046"W
	TORO "21" STATE 2 SHL NMSP-E (NAD 83) N (Y) = 599519.5' E (X) = 809791.8' LAT.: 32°38'42.35"N LONG.: 103°27'40.22"W NMSP-E (NAD 27) N (Y) = 599456.2' E (X) = 768611.2' LAT.: 32.6449737"N LONG.: 103.4606811"W		2310'
SW COR SEC 21 NMSP-E (NAD 83) N (Y) = 597180.8' E (X) = 806834.0' LAT.: 32°38'19.45"N LONG.: 103°28'15.03"W NMSP-E (NAD 27) N (Y) = 597117.6' E (X) = 766653.3' LAT.: 32.6386123"N LONG.: 103.4703514"W	S1/4 COR SEC 21 NMSP-E (NAD 83) N (Y) = 597200.9' E (X) = 809486.1' LAT.: 32°38'19.43"N LONG.: 103°27'44.01"W NMSP-E (NAD 27) N (Y) = 597137.6' E (X) = 768305.4' LAT.: 32.6386080"N LONG.: 103.4617364"W	SE COR SEC 21 NMSP-E (NAD 83) N (Y) = 597219.5' E (X) = 812118.1' LAT.: 32°38'19.40"N LONG.: 103°27'13.23"W NMSP-E (NAD 27) N (Y) = 597156.3' E (X) = 770937.4' LAT.: 32.6385996"N LONG.: 103.4531867"W	

OPERATOR CERTIFICATION

I hereby certify that the information contained herein is true and complete to the best of my knowledge and belief, and that this organization either owns a working interest or unleased mineral interest in the land including the proposed bottom hole location or has a right to drill this well at this location pursuant to a contract with an owner of such a mineral or working interest, or to voluntary pooling agreement or a compulsory pooling order heretofore entered by the division.

Heather Brehm 05/15/2015
Signature Date

Heather Brehm
Print Name

hbrehm@rkixp.com
E-mail Address

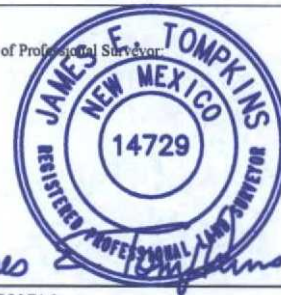
SURVEYORS CERTIFICATION

I hereby certify that the well location shown on this plat was plotted from field notes of actual surveys made by me or under my supervision, and that the same is true and correct to the best of my belief.

JUNE 09, 2015

Date of Survey

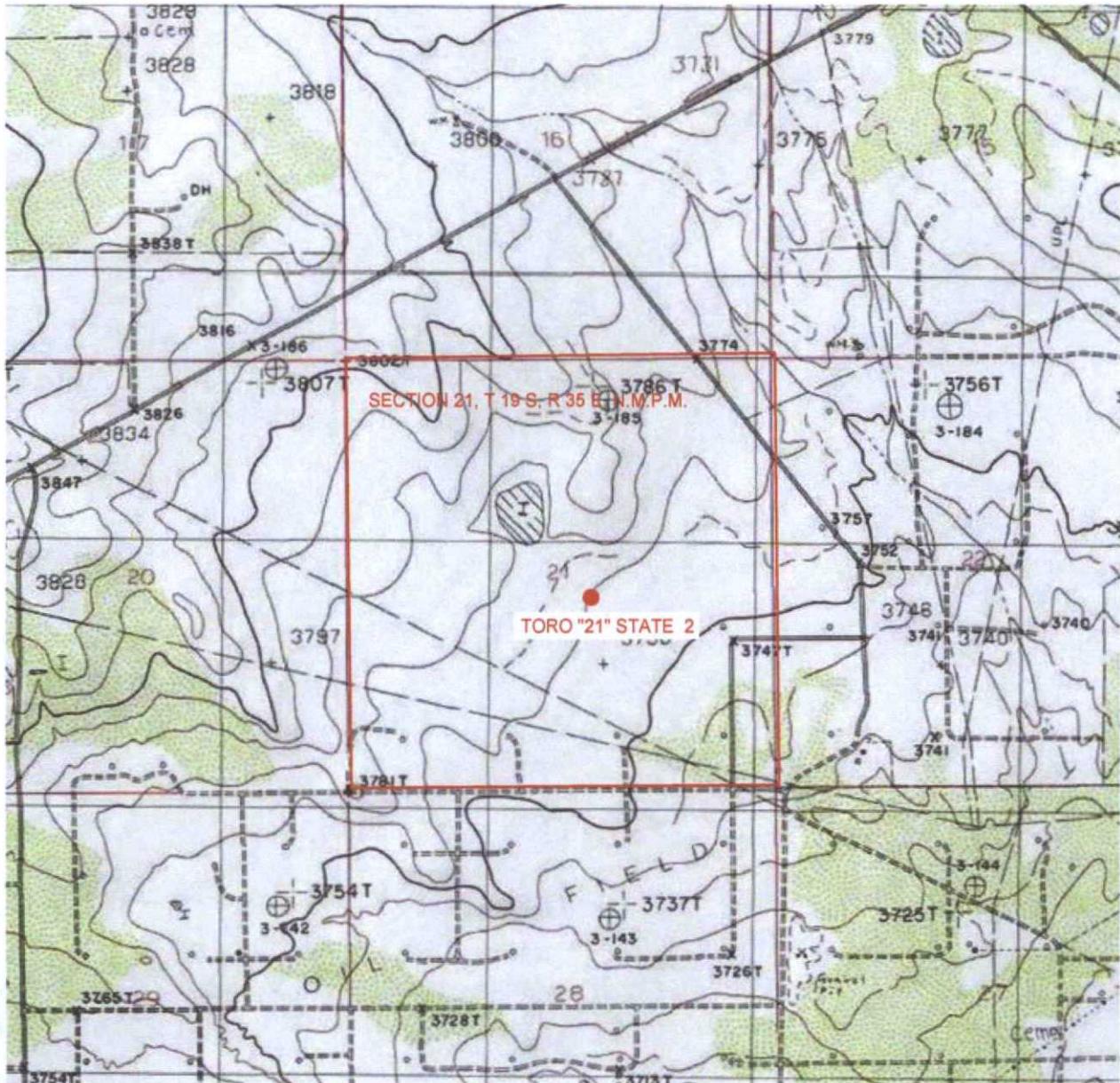
Signature and Seal of Professional Surveyor



Job No.: WTC50716
JAMES E. TOMPKINS 14729
Certificate Number

DEC 10 2015

LOCATION VERIFICATION MAP



0 1000 2000 4000

GRAPHIC SCALE 1" = 2000'

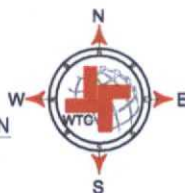
SECTION 21, T 19 S, R 35 E, N.M.P.M.

COUNTY: LEA STATE: NM

DESCRIPTION: 2310' FSL & 2310' FEL

OPERATOR: RKI EXPLORATION & PRODUCTION

WELL NAME: TORO "21" STATE 2



DRIVING DIRECTIONS:

BEGINNING AT THE INTERSECTION OF U.S. HWY. 62 AND FM 18 IN HOBBS, NEW MEXICO; HEAD WEST ON U.S. HWY 62 FOR APPROXIMATELY 15.0 MILES TO A FORK IN THE HIGHWAY. AT FORK KEEP LEFT ON U.S. HWY. 62 AND HEAD SOUTHWEST FOR APPROXIMATELY 5.2 MILES TO WILLOW TREE ROAD ON LEFT. TURN LEFT ONTO WILLOW TREE ROAD AND HEAD SOUTHEAST FOR APPROXIMATELY 1.1 MILES TO A BEND IN THE ROAD. FOLLOW AROUND BEND, CONTINUING ON WILLOW TREE ROAD HEADING SOUTH FOR APPROXIMATELY 0.2 MILE TO A LEASE ROAD ON THE RIGHT. TURN RIGHT ONTO LEASE ROAD AND HEAD WEST FOR APPROXIMATELY 0.7 MILE TO A BEND IN THE ROAD. FOLLOW AROUND BEND HEADING NORTH APPROXIMATELY 0.1 MILES TO THE EXISTING LOCATION.



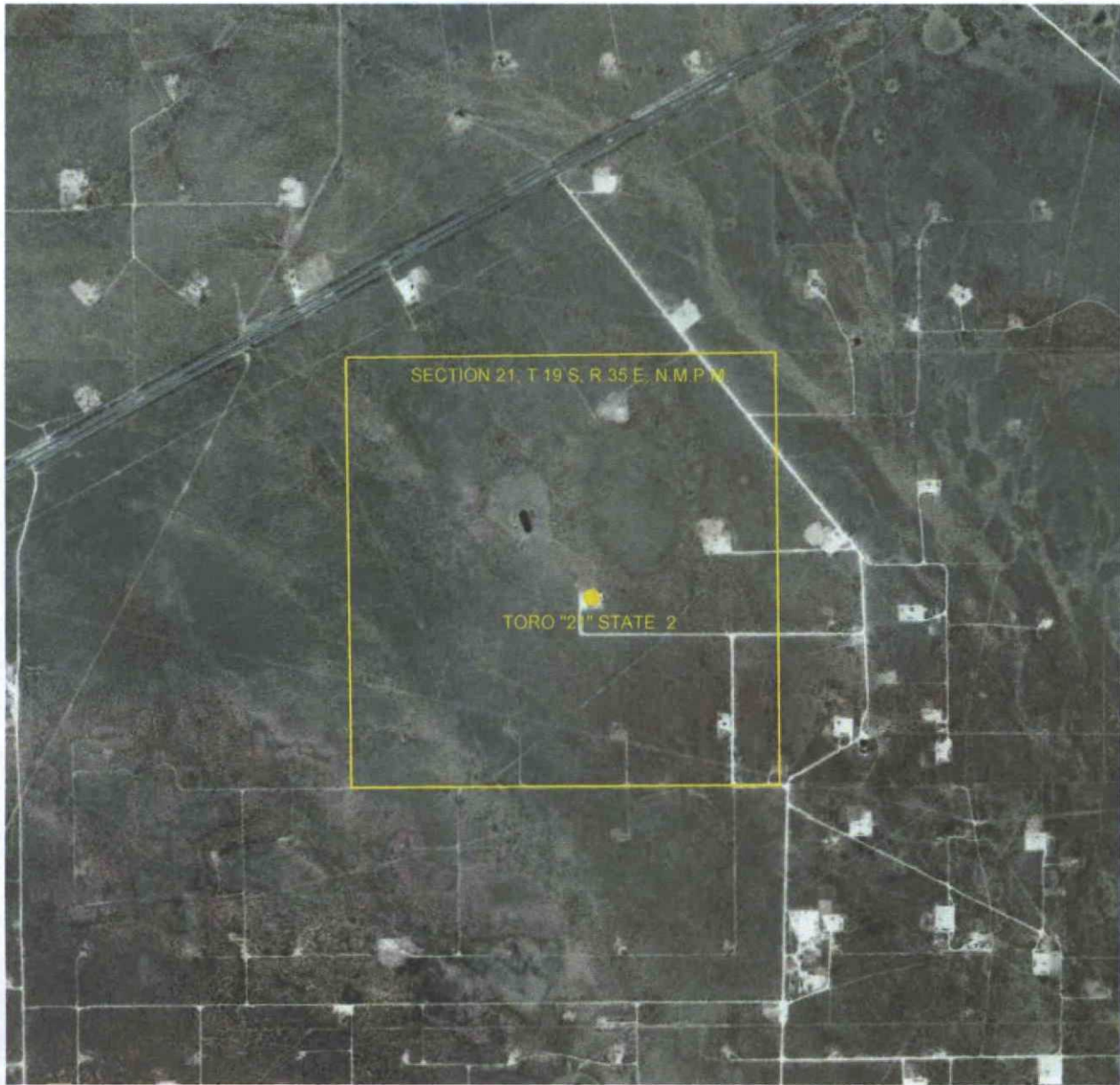
WTC, INC.
405 S.W. 1st STREET
ANDREWS, TEXAS 79714
(432) 523-2181



JOB No.: WTC50716

Copyright © 2008 RKI Exploration & Production. All Rights Reserved. WTC50716-001

AERIAL MAP



GRAPHIC SCALE 1" = 2000'

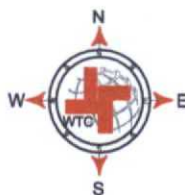
SECTION 21, T 19 S, R 35 E, N.M.P.M.

COUNTY: LEA STATE: NM

DESCRIPTION: 2310' FSL & 2310' FEL

OPERATOR: RKI EXPLORATION & PRODUCTION

WELL NAME: TORO "21" STATE 2



DRIVING DIRECTIONS:

BEGINNING AT THE INTERSECTION OF U.S. HWY. 62 AND FM 18 IN HOBBS, NEW MEXICO; HEAD WEST ON U.S. HWY 62 FOR APPROXIMATELY 15.0 MILES TO A FORK IN THE HIGHWAY. AT FORK KEEP LEFT ON U.S. HWY. 62 AND HEAD SOUTHWEST FOR APPROXIMATELY 5.2 MILES TO WILLOW TREE ROAD ON LEFT. TURN LEFT ONTO WILLOW TREE ROAD AND HEAD SOUTHEAST FOR APPROXIMATELY 1.1 MILES TO A BEND IN THE ROAD. FOLLOW AROUND BEND, CONTINUING ON WILLOW TREE ROAD HEADING SOUTH FOR APPROXIMATELY 0.2 MILE TO A LEASE ROAD ON THE RIGHT. TURN RIGHT ONTO LEASE ROAD AND HEAD WEST FOR APPROXIMATELY 0.7 MILE TO A BEND IN THE ROAD. FOLLOW AROUND BEND HEADING NORTH APPROXIMATELY 0.1 MILES TO THE EXISTING LOCATION.

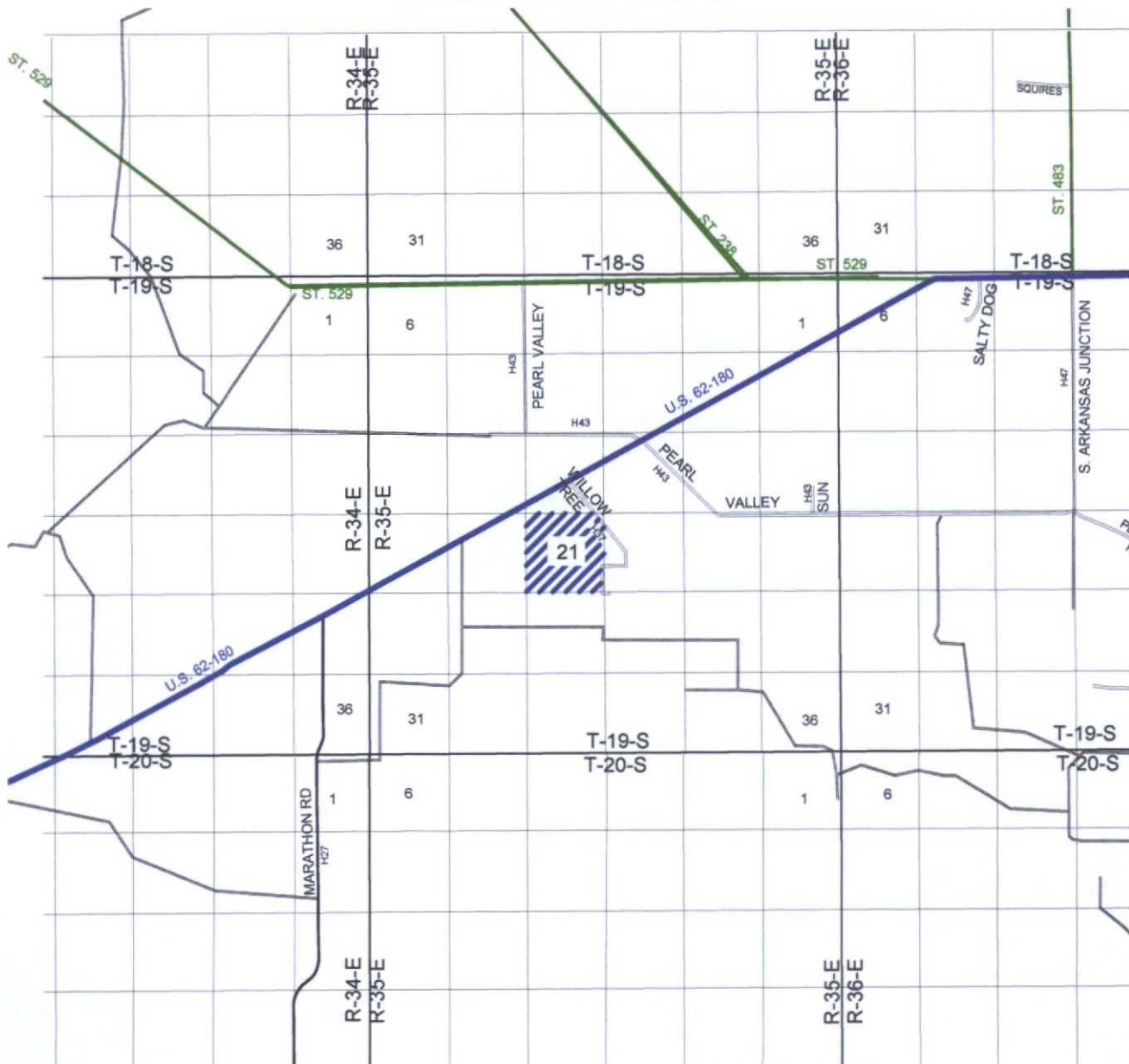


WTC, INC.
405 S.W. 1st STREET
ANDREWS, TEXAS 79714
(432) 523-2181



JOB No.: WTC50716

VICINITY MAP



SECTION 21, T 19 S, R 35 E, N.M.P.M.

COUNTY: LEA STATE: NM

DESCRIPTION: 2310' FSL & 2310' FEL

OPERATOR: RKI EXPLORATION & PRODUCTION

WELL NAME: TORO "21" STATE 2



DRIVING DIRECTIONS:

BEGINNING AT THE INTERSECTION OF U.S. HWY. 62 AND FM 18 IN HOBBS, NEW MEXICO; HEAD WEST ON U.S. HWY 62 FOR APPROXIMATELY 15.0 MILES TO A FORK IN THE HIGHWAY. AT FORK KEEP LEFT ON U.S. HWY. 62 AND HEAD SOUTHWEST FOR APPROXIMATELY 5.2 MILES TO WILLOW TREE ROAD ON LEFT. TURN LEFT ONTO WILLOW TREE ROAD AND HEAD SOUTHEAST FOR APPROXIMATELY 1.1 MILES TO A BEND IN THE ROAD. FOLLOW AROUND BEND, CONTINUING ON WILLOW TREE ROAD HEADING SOUTH FOR APPROXIMATELY 0.2 MILE TO A LEASE ROAD ON THE RIGHT. TURN RIGHT ONTO LEASE ROAD AND HEAD WEST FOR APPROXIMATELY 0.7 MILE TO A BEND IN THE ROAD. FOLLOW AROUND BEND HEADING NORTH APPROXIMATELY 0.1 MILES TO THE EXISTING LOCATION.

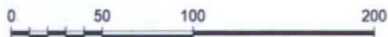
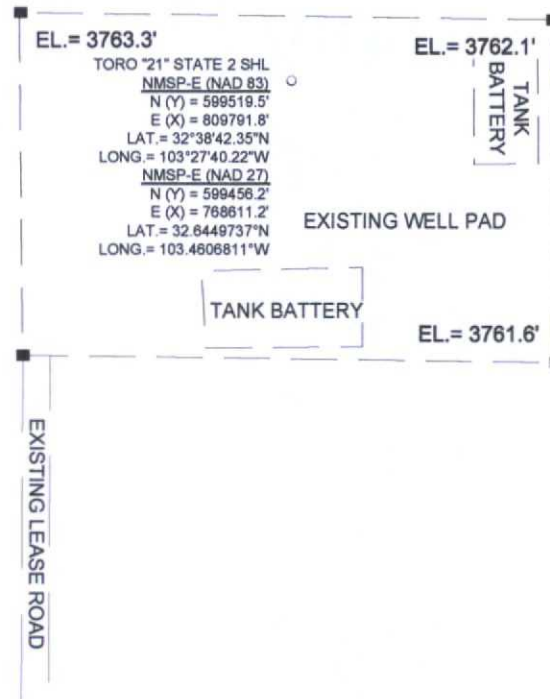


WTC, INC.
405 S.W. 1st. STREET
ANDREWS, TEXAS 79714
(432) 523-2181



JOB No.: WTC50716

SITE LOCATION



GRAPHIC SCALE 1" = 100'

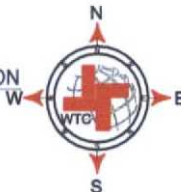
SECTION 21, T 19 S, R 35 E, N.M.P.M.

COUNTY: LEA STATE: NM

DESCRIPTION: 2310' FSL & 2310' FEL

OPERATOR: RKI EXPLORATION & PRODUCTION

WELL NAME: TORO "21" STATE 2



WTC, INC.
405 S.W. 1st STREET
ANDREWS, TEXAS 79714
(432) 523-2181

DRIVING DIRECTIONS:

BEGINNING AT THE INTERSECTION OF U.S. HWY. 62 AND FM 18 IN HOBBS, NEW MEXICO; HEAD WEST ON U.S. HWY 62 FOR APPROXIMATELY 15.0 MILES TO A FORK IN THE HIGHWAY. AT FORK KEEP LEFT ON U.S. HWY. 62 AND HEAD SOUTHWEST FOR APPROXIMATELY 5.2 MILES TO WILLOW TREE ROAD ON LEFT. TURN LEFT ONTO WILLOW TREE ROAD AND HEAD SOUTHEAST FOR APPROXIMATELY 1.1 MILES TO A BEND IN THE ROAD. FOLLOW AROUND BEND, CONTINUING ON WILLOW TREE ROAD HEADING SOUTH FOR APPROXIMATELY 0.2 MILE TO A LEASE ROAD ON THE RIGHT. TURN RIGHT ONTO LEASE ROAD AND HEAD WEST FOR APPROXIMATELY 0.7 MILE TO A BEND IN THE ROAD. FOLLOW AROUND BEND HEADING NORTH APPROXIMATELY 0.1 MILES TO THE EXISTING LOCATION.



JOB No.: WTC50716

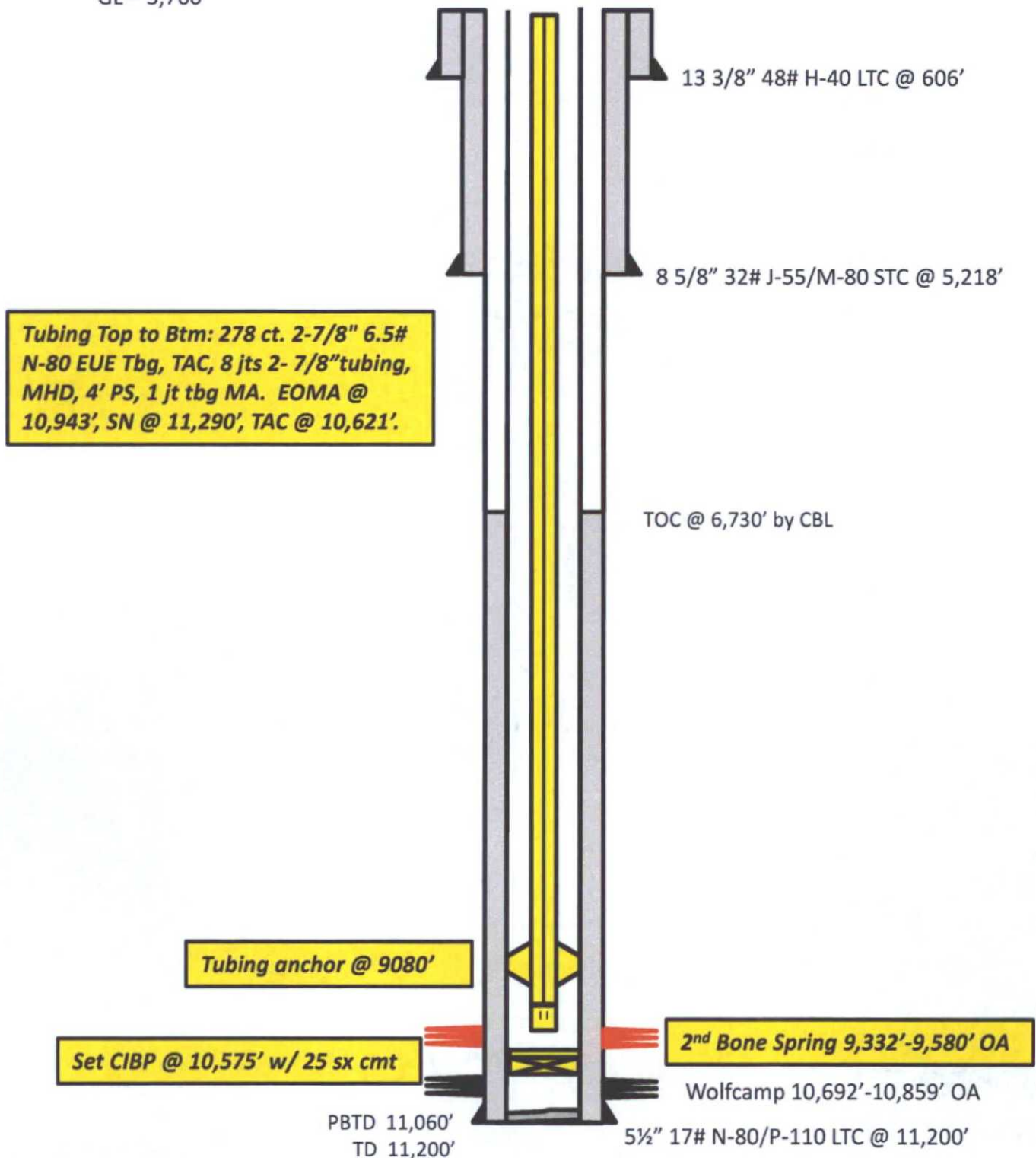
RKI Exploration and Production, LLC

Toro 21-2
Section 21 T19S R35E
Lea County, NM
API No. 30-025-35788

PROPOSED

KB - 3,779'
GL - 3,760'

5/20/15; JLM



RKI Exploration and Production, LLC

Toro 21-2
Section 21 T19S R35E
Lea County, NM
API No. 30-025-35788

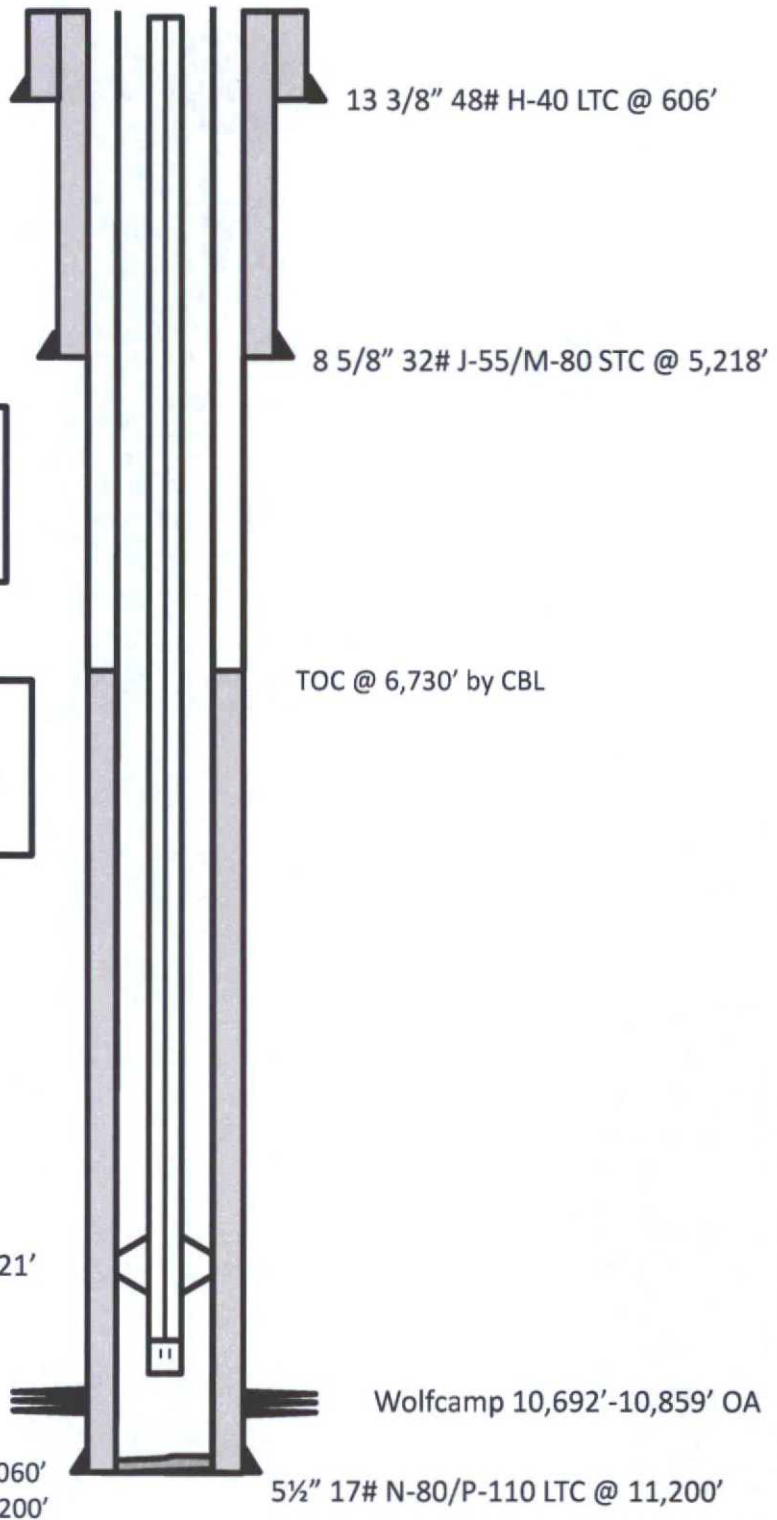
CURRENT

KB - 3,779'
GL - 3,760'

5/20/15; JLM

Tubing Top to Btm: 338 ct. 2-7/8" 6.5# N-80 EUE Tbg, TAC, 9 jts 2- 7/8" tubing, MHD, 4' PS, 1 jt tbg MA. EOMA @ 10,943', SN @ 11,290', TAC @ 10,621'.

Rod string top to bottom: PR/lmr, 4 ct. pony rods, 114 ct. 1" rods, 106 ct. 7/8" rods, 202 ct. 3/4" rods, 12 ct. 7/8" rods, 1' lift sub, pump.



Tubing anchor @ 10,621'

PBTD 11,060'
TD 11,200'

Wolfcamp 10,692'-10,859' OA

5 1/2" 17# N-80/P-110 LTC @ 11,200'