

DISTRICT I  
1625 N. French Dr., Hobbs, NM 88240  
Phone (575) 393-6161 Fax: (575) 393-0720

DISTRICT II  
811 S. First St., Artesia, NM 88210  
Phone (575) 748-1283 Fax: (575) 748-9720

DISTRICT III  
1000 Rio Brazos Road, Aztec, NM 87410  
Phone (505) 334-6178 Fax: (505) 334-6170

DISTRICT IV  
1220 S. St. Francis Dr., Santa Fe, NM 87505  
Phone (505) 476-3460 Fax: (505) 476-3462

State of New Mexico  
Energy, Minerals & Natural Resources Department  
OIL CONSERVATION DIVISION  
1220 South St. Francis Dr.  
Santa Fe, New Mexico 87505

HOBBS OCD

DEC 04 2015

Form C-102  
Revised August 1, 2011  
Submit one copy to appropriate  
District Office

AMENDED REPORT

WELL LOCATION AND ACREAGE DEDICATION PLAT

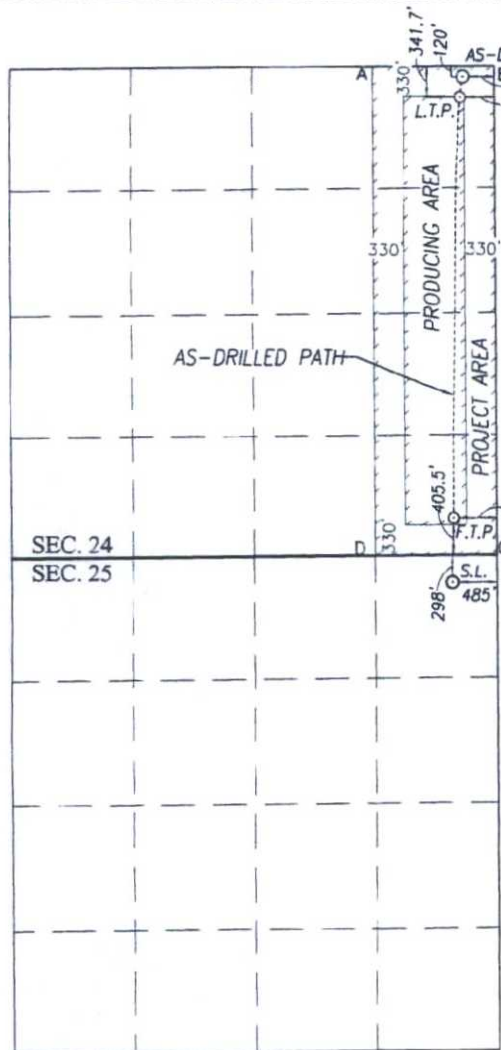
|                                   |   |                                      |
|-----------------------------------|---|--------------------------------------|
| API Number<br><b>30-025-42577</b> | Pool Code<br><b>37570</b>                       | Pool Name<br><b>Lea; Bone Spring</b> |
| Property Code<br><b>39834</b>     | Property Name<br><b>PERLA NEGRA FEDERAL COM</b> | Well Number<br><b>4H</b>             |
| OGRID No.<br><b>005380</b>        | Operator Name<br><b>XTO ENERGY</b>              | Elevation<br><b>3780'</b>            |

| UL or lot No. | Section   | Township    | Range       | Lot Idn | Feet from the | North/South line | Feet from the | East/West line | County     |
|---------------|-----------|-------------|-------------|---------|---------------|------------------|---------------|----------------|------------|
| <b>A</b>      | <b>25</b> | <b>19-S</b> | <b>34-E</b> |         | <b>298</b>    | <b>NORTH</b>     | <b>485</b>    | <b>EAST</b>    | <b>LEA</b> |

As-Drilled Bottom Hole Location If Different From Surface

| UL or lot No.                 | Section         | Township           | Range       | Lot Idn | Feet from the | North/South line | Feet from the | East/West line | County     |
|-------------------------------|-----------------|--------------------|-------------|---------|---------------|------------------|---------------|----------------|------------|
| <b>A</b>                      | <b>24</b>       | <b>19-S</b>        | <b>34-E</b> |         | <b>120</b>    | <b>NORTH</b>     | <b>344.2</b>  | <b>EAST</b>    | <b>LEA</b> |
| Dedicated Acres<br><b>160</b> | Joint or Infill | Consolidation Code | Order No.   |         |               |                  |               |                |            |

NO ALLOWABLE WILL BE ASSIGNED TO THIS COMPLETION UNTIL ALL INTERESTS HAVE BEEN CONSOLIDATED OR A NON-STANDARD UNIT HAS BEEN APPROVED BY THE DIVISION



SCALE: 1"=2000'

AS-DRILLED B.H.  
341.7' 120'  
344.2' 374.4'  
L.T.P.  
330' 330'  
330' 330'  
405.5' 468.7'  
S.L.  
298' 485'

|  |  |
|--|--|
| GEODETIC COORDINATES<br>NAD 27 NME<br>BOTTOM HOLE LOCATION<br>Y=602142.0 N<br>X=754691.9 E<br>LAT.=32.652662° N<br>LONG.=103.505829° W | GEODETIC COORDINATES<br>NAD 83 NME<br>BOTTOM HOLE LOCATION<br>Y=602205.6 N<br>X=795872.2 E<br>LAT.=32.652786° N<br>LONG.=103.506321° W |
| GEODETIC COORDINATES<br>NAD 27 NME<br>LAST TAKE POINT<br>Y=601919.9 N<br>X=754663.7 E<br>LAT.=32.652052° N<br>LONG.=103.505927° W      | GEODETIC COORDINATES<br>NAD 83 NME<br>LAST TAKE POINT<br>Y=601983.5 N<br>X=795844.0 E<br>LAT.=32.652176° N<br>LONG.=103.506418° W      |

CORNER COORDINATES TABLE  
NAD 27 NME  
A - Y=602253.8 N, X=753714.0 E  
B - Y=602264.8 N, X=755035.0 E  
C - Y=596983.2 N, X=755082.0 E  
D - Y=596970.1 N, X=753760.8 E

CORNER COORDINATES TABLE  
NAD 83 NME  
A - Y=602317.4 N, X=794894.3 E  
B - Y=602328.4 N, X=796215.3 E  
C - Y=597046.7 N, X=796262.4 E  
D - Y=597033.5 N, X=794941.3 E

|  |  |
|--|--|
| GEODETIC COORDINATES<br>NAD 27 NME<br>FIRST TAKE POINT<br>Y=597384.0 N<br>X=754609.8 E<br>LAT.=32.639586° N<br>LONG.=103.506216° W | GEODETIC COORDINATES<br>NAD 83 NME<br>FIRST TAKE POINT<br>Y=597447.4 N<br>X=795790.3 E<br>LAT.=32.639710° N<br>LONG.=103.506708° W |
|--|--|

|  |  |
|--|--|
| GEODETIC COORDINATES<br>NAD 27 NME<br>SURFACE LOCATION<br>Y=596680.4 N<br>X=754599.7 E<br>LAT.=32.637653° N<br>LONG.=103.506267° W | GEODETIC COORDINATES<br>NAD 83 NME<br>SURFACE LOCATION<br>Y=596743.9 N<br>X=795780.2 E<br>LAT.=32.637776° N<br>LONG.=103.506758° W |
|--|--|

OPERATOR CERTIFICATION

I hereby certify that the information herein is true and complete to the best of my knowledge and belief, and that this organization either owns a working interest or unleased mineral interest in the land including the proposed bottom hole location or has a right to drill this well at this location pursuant to a contract with an owner of such mineral or working interest, or to a voluntary pooling agreement or a compulsory pooling order heretofore entered by the division.

Stephanie Rabadue  
Signature Date

Stephanie Rabadue  
Printed Name

Stephanie.rabadue@xenergy.com  
E-mail Address

SURVEYOR CERTIFICATION

I hereby certify that the well location shown on this plat was plotted from field notes of actual surveys made by me or under my supervision, and that the same is true and correct to the best of my belief.

MARCH 18, 2014

Date of Survey  
Signature & Seal of Professional Surveyor

Ronald J. Eidson  
Certificate Number  
Gary G. Eidson 12641  
Ronald J. Eidson 3239

ACK REL. W.O. 14110290

JWSC W.O. 15.13.1002

DEC 15 2015