

District I  
1625 N. French Dr., Hobbs, NM 88240  
Phone: (575) 393-6161 Fax: (575) 393-0720  
District II  
811 S. First St., Artesia, NM 88210  
Phone: (575) 748-1253 Fax: (575) 748-9720  
District III  
1000 Rio Brazos Road, Aztec, NM 87410  
Phone: (505) 334-6178 Fax: (505) 334-6170  
District IV  
1220 S. St. Francis Dr., Santa Fe, NM 87505  
Phone: (505) 476-3460 Fax: (505) 476-3462

State of New Mexico  
Energy, Minerals & Natural Resources Department  
OIL CONSERVATION DIVISION  
1220 South St. Francis Dr.  
Santa Fe, NM 87505

HOBBS OCD

Form C-102

DEC 23 2015

Revised August 1, 2011

Submit one copy to appropriate

District Office

RECEIVED

☐ AMENDED REPORT

WELL LOCATION AND ACREAGE DEDICATION PLAT

<sup>1</sup> API Number <b>70-025-42982</b>		<sup>2</sup> Pool Code <b>916434</b>		<sup>3</sup> Pool Name <b>Bone Spring North: Red Hills</b>	
<sup>4</sup> Property Code <b>315066</b>		<sup>5</sup> Property Name <b>RED RAIDER 25 BKS STATE</b>		<sup>6</sup> Well Number <b>4H</b>	
<sup>7</sup> OGRID No. <b>270329</b>		<sup>8</sup> Operator Name <b>ENDURANCE RESOURCES, LLC</b>		<sup>9</sup> Elevation <b>3508.5</b>	

" Surface Location

UL or lot no.	Section	Township	Range	Lot Idn	Feet from the	North/South line	Feet from the	East/West line	County
<b>O</b>	<b>25</b>	<b>24 S</b>	<b>33 E</b>		<b>250</b>	<b>SOUTH</b>	<b>1650</b>	<b>EAST</b>	<b>LEA</b>

" Bottom Hole Location If Different From Surface

UL or lot no.	Section	Township	Range	Lot Idn	Feet from the	North/South line	Feet from the	East/West line	County
<b>B</b>	<b>25</b>	<b>24 S</b>	<b>33 E</b>		<b>330</b>	<b>NORTH</b>	<b>1650</b>	<b>EAST</b>	<b>LEA</b>

<sup>10</sup> Dedicated Acres <b>160</b>	<sup>11</sup> Joint or Infill	<sup>12</sup> Consolidation Code	<sup>13</sup> Order No.
---	-------------------------------	----------------------------------	-------------------------

No allowable will be assigned to this completion until all interests have been consolidated or a non-standard unit has been approved by the division.

<p>N89°43'58"E 2642.27 FT</p> <p>HW CORNER SEC. 25 LAT. = 32.1958463°N LONG. = 103.5345863°W NMSP EAST (FT) N = 435901.84 E = 788415.27</p> <p>NOTE: LATITUDE AND LONGITUDE COORDINATES ARE SHOWN USING THE NORTH AMERICAN DATUM OF 1983 (NAD83). LISTED NEW MEXICO STATE PLANE EAST COORDINATES ARE GRID (NAD83). BASIS OF BEARING AND DISTANCES USED ARE NEW MEXICO STATE PLANE EAST COORDINATES MODIFIED TO THE SURFACE.</p> <p>W Q CORNER SEC. 25 LAT. = 32.1885886°N LONG. = 103.5345826°W NMSP EAST (FT) N = 433260.63 E = 788436.03</p> <p>SW CORNER SEC. 25 LAT. = 32.1813329°N LONG. = 103.5345809°W NMSP EAST (FT) N = 430621.03 E = 788456.16</p> <p>S89°42'14"W 2640.38 FT</p>		<p>DNF</p> <p>BOTTOM OF HOLE</p> <p>BOTTOM OF HOLE LAT. = 32.1949132°N LONG. = 103.5228395°W NMSP EAST (FT) N = 435588.66 E = 792051.61</p> <p>RED RAIDER "25" BKS STATE 4H ELEV. = 3508.5' LAT. = 32.1819074°N (NAD83) LONG. = 103.5228377°W NMSP EAST (FT) N = 430889.97 E = 792087.58</p> <p>SURFACE LOCATION</p> <p>S Q CORNER SEC. 25 LAT. = 32.1813162°N LONG. = 103.5260487°W NMSP EAST (FT) N = 430634.67 E = 791098.00</p> <p>S89°41'26"W 2643.67 FT</p>		<p>N89°43'58"E 2642.27 FT</p> <p>NE CORNER SEC. 25 LAT. = 32.1958070°N LONG. = 103.5175089°W NMSP EAST (FT) N = 435926.28 E = 793698.73</p> <p>E Q CORNER SEC. 25 LAT. = 32.1885545°N LONG. = 103.5175055°W NMSP EAST (FT) N = 433287.88 E = 793719.19</p> <p>SE CORNER SEC. 25 LAT. = 32.1813006°N LONG. = 103.5175058°W NMSP EAST (FT) N = 430648.95 E = 793739.13</p> <p>S89°25'29"E 2638.99 FT</p> <p>S89°25'58"E 2639.51 FT</p>	
--	--	---	--	--	--

**" OPERATOR CERTIFICATION**

I hereby certify that the information contained herein is true and complete to the best of my knowledge and belief, and that this organization either owns a working interest or undivided mineral interest in the land including the proposed bottom hole location or has a right to drill this well at this location pursuant to a contract with an owner of such a mineral or working interest, or to a voluntary pooling agreement or a compulsory pooling order heretofore entered by the Division.

*Tinilee Tilton* 12/21/2015  
Signature Date

**TINILEE TILTON**  
Printed Name

*tinilee@endurance*  
Email Address

*resourcesllc.com*

**"SURVEYOR CERTIFICATION**

I hereby certify that the well location shown on this plat was plotted from field notes of actual surveys made by me or under my supervision, and that the same is true and correct to the best of my belief.

AUGUST 4, 2015  
Date of Survey

*Edmon F. Jaramillo*  
Signature and Seal of Professional Surveyor

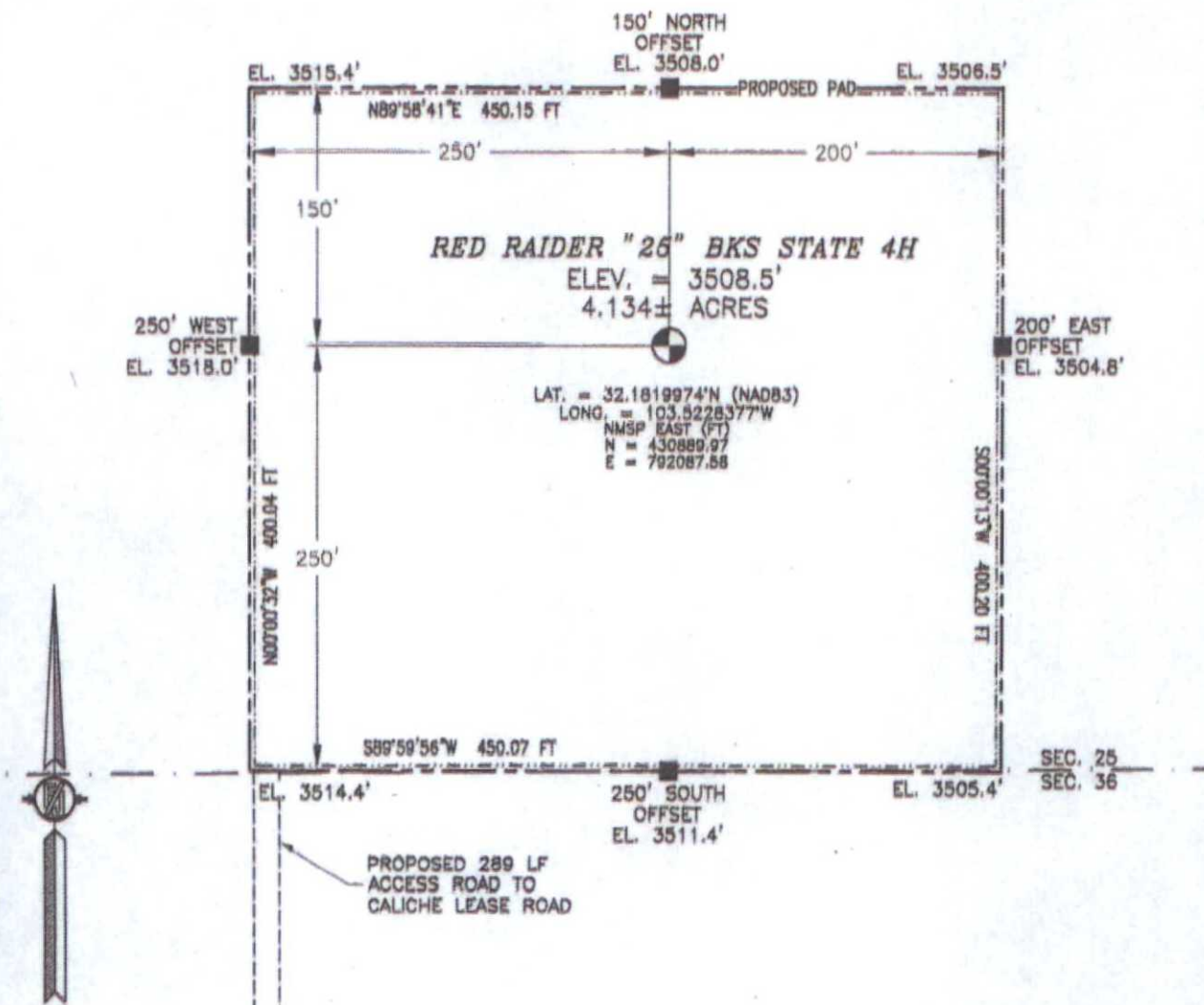
Certificate Number: EDMON F. JARAMILLO, PLS 12797  
SURVEY NO. 4182

JAN 04 2016



SECTION 25, TOWNSHIP 24 SOUTH, RANGE 33 EAST, N.M.P.M.  
LEA COUNTY, STATE OF NEW MEXICO  
**SITE MAP**

NOTE: LATITUDE AND LONGITUDE COORDINATES ARE SHOWN USING THE NORTH AMERICAN DATUM OF 1983 (NAD83). LISTED NEW MEXICO STATE PLANE EAST COORDINATES ARE GRID (NAD83). BASIS OF BEARING AND DISTANCES USED ARE NEW MEXICO STATE PLANE EAST COORDINATES MODIFIED TO THE SURFACE.



0 10 50 100 200

SCALE 1" = 100'

**DIRECTIONS TO LOCATION**

FROM THE INTERSECTION OF STATE HIGHWAY 128 AND CR 21 (DELAWARE BASIN) GO WEST ON STATE HIGHWAY 128 FOR APPROX. 1.4 MILES. TURN LEFT GO SOUTHEAST ON 20' CALICHE LEASE ROAD (VACA) FOR APPROX. 2.2 MILES. TURN RIGHT GO WEST ON CALICHE LEASE ROAD FOR APPROX. 0.25 OF A MILE TO BEGIN ROAD SURVEY. FOLLOW ROAD SURVEY NORTH FOR APPROX. 289' TO THE SOUTHWEST PAD CORNER FOR THIS LOCATION.

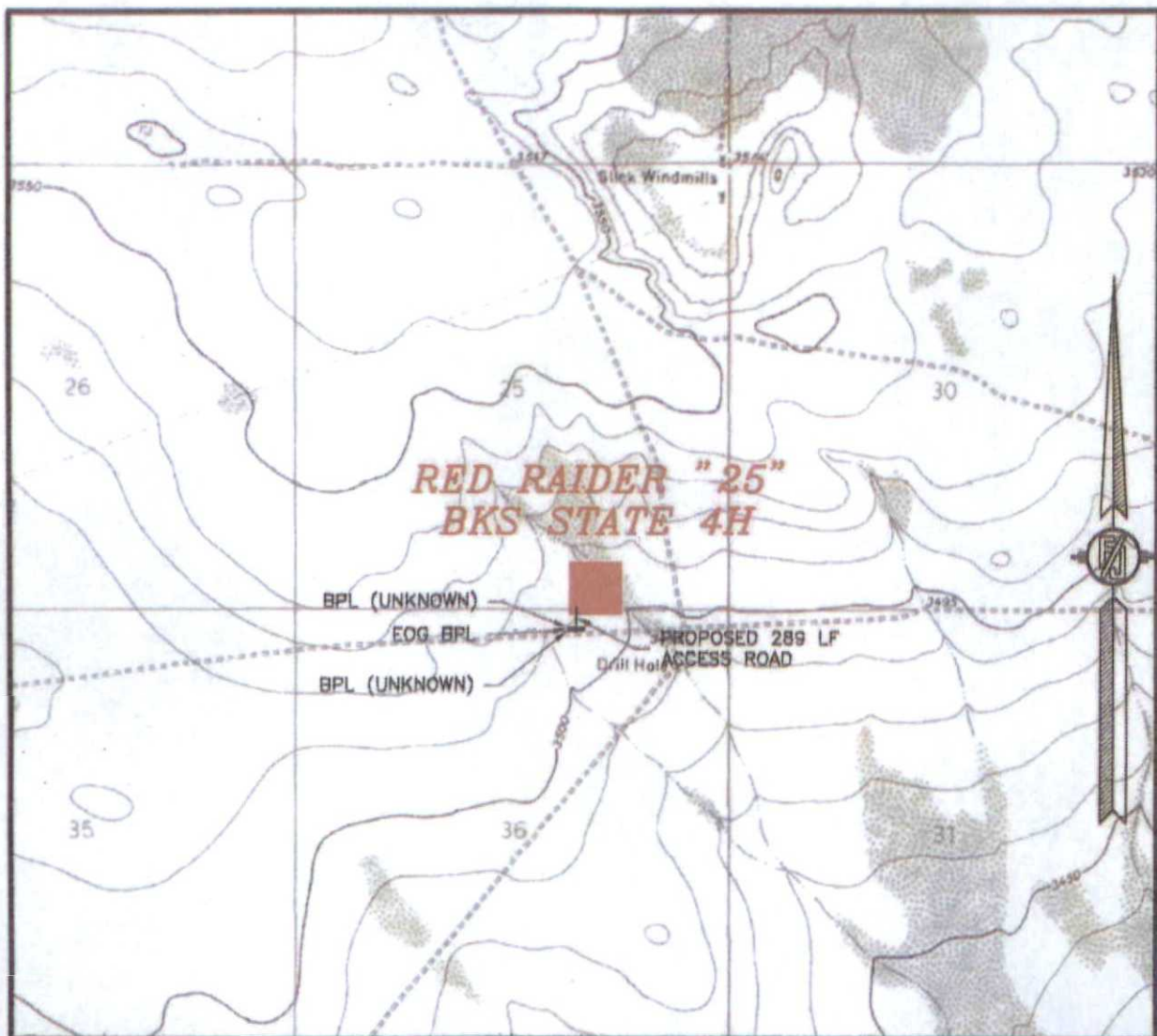
ENDURANCE RESOURCES, LLC  
**RED RAIDER "25" BKS STATE 4H**  
LOCATED 250 FT. FROM THE SOUTH LINE  
AND 1650 FT. FROM THE EAST LINE OF  
SECTION 25, TOWNSHIP 24 SOUTH,  
RANGE 33 EAST, N.M.P.M.  
LEA COUNTY, STATE OF NEW MEXICO

AUGUST 4, 2015

SURVEY NO. 4162

MADRON SURVEYING, INC. 301 SOUTH CANAL (575) 234-3341 CARLSBAD, NEW MEXICO

SECTION 25, TOWNSHIP 24 SOUTH, RANGE 33 EAST, N.M.P.M.  
LEA COUNTY, STATE OF NEW MEXICO  
LOCATION VERIFICATION MAP



USGS QUAD MAP:  
BELL LAKE

NOT TO SCALE

ENDURANCE RESOURCES, LLC  
**RED RAIDER "25" BKS STATE 4H**  
LOCATED 250 FT. FROM THE SOUTH LINE  
AND 1650 FT. FROM THE EAST LINE OF  
SECTION 25, TOWNSHIP 24 SOUTH,  
RANGE 33 EAST, N.M.P.M.  
LEA COUNTY, STATE OF NEW MEXICO

AUGUST 4, 2015

MADRON SURVEYING, INC. 301 SOUTH CANAL CARLSBAD, NEW MEXICO  
(979) 234-3341

SURVEY NO. 4162



SECTION 25, TOWNSHIP 24 SOUTH, RANGE 33 EAST, N.M.P.M.  
LEA COUNTY, STATE OF NEW MEXICO  
VICINITY MAP



DISTANCES IN MILES

NOT TO SCALE

**DIRECTIONS TO LOCATION**

FROM THE INTERSECTION OF STATE HIGHWAY 128 AND CR 21 (DELAWARE BASIN) GO WEST ON STATE HIGHWAY 128 FOR APPROX. 1.4 MILES. TURN LEFT GO SOUTHEAST ON 20' CALICHE LEASE ROAD (VACA) FOR APPROX. 2.2 MILES. TURN RIGHT GO WEST ON CALICHE LEASE ROAD FOR APPROX. 0.25 OF A MILE TO BEGIN ROAD SURVEY. FOLLOW ROAD SURVEY NORTH FOR APPROX. 289' TO THE SOUTHWEST PAD CORNER FOR THIS LOCATION.

ENDURANCE RESOURCES, LLC  
**RED RAIDER "25" BKS STATE 4H**  
LOCATED 250 FT. FROM THE SOUTH LINE  
AND 1650 FT. FROM THE EAST LINE OF  
SECTION 25, TOWNSHIP 24 SOUTH,  
RANGE 33 EAST, N.M.P.M.  
LEA COUNTY, STATE OF NEW MEXICO

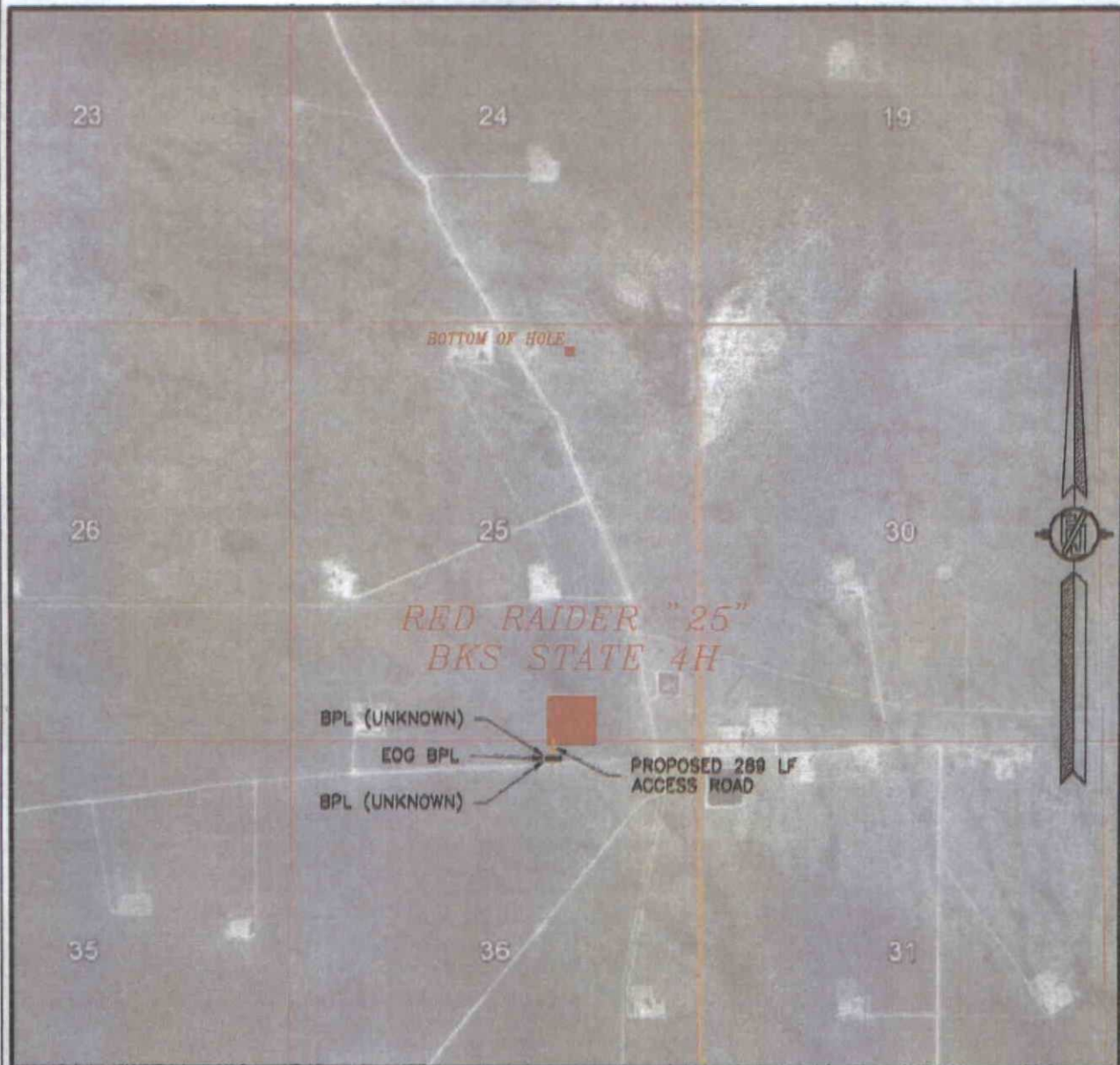
AUGUST 4, 2015

SURVEY NO. 4162

MADRON SURVEYING, INC. 301 SOUTH CANAL (575) 234-3341 CARLSBAD, NEW MEXICO



SECTION 25, TOWNSHIP 24 SOUTH, RANGE 33 EAST, N.M.P.M.  
LEA COUNTY, STATE OF NEW MEXICO  
**AERIAL PHOTO**



NOT TO SCALE  
AERIAL PHOTO:  
GOOGLE EARTH  
FEBRUARY 2014

**ENDURANCE RESOURCES, LLC**  
**RED RAIDER "25" BKS STATE 4H**  
LOCATED 250 FT. FROM THE SOUTH LINE  
AND 1650 FT. FROM THE EAST LINE OF  
SECTION 25, TOWNSHIP 24 SOUTH,  
RANGE 33 EAST, N.M.P.M.  
LEA COUNTY, STATE OF NEW MEXICO

AUGUST 4, 2015

SURVEY NO. 4162

MADRON SURVEYING, INC. 501 SOUTH CANAL (575) 234-3341 CARLSBAD, NEW MEXICO



SECTION 25, TOWNSHIP 24 SOUTH, RANGE 33 EAST, N.M.P.M.  
LEA COUNTY, STATE OF NEW MEXICO  
**ACCESS AERIAL ROUTE MAP**



NOT TO SCALE  
AERIAL PHOTO:  
GOOGLE EARTH  
FEBRUARY 2014

**ENDURANCE RESOURCES, LLC**  
**RED RAIDER "25" BKS STATE 4H**  
LOCATED 250 FT. FROM THE SOUTH LINE  
AND 1650 FT. FROM THE EAST LINE OF  
SECTION 25, TOWNSHIP 24 SOUTH,  
RANGE 33 EAST, N.M.P.M.  
LEA COUNTY, STATE OF NEW MEXICO

AUGUST 4, 2015

SURVEY NO. 4162

MADRON SURVEYING, INC. 301 SOUTH CANAL (575) 234-3341 CARLSBAD, NEW MEXICO