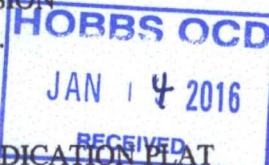


District I
1625 N. French Dr., Hobbs, NM 88240
Phone: (575) 393-6161 Fax: (575) 393-0730
District II
811 S. First St., Artesia, NM 88210
Phone: (575) 748-1283 Fax: (575) 748-9720
District III
1000 Rio Brazos Road, Aztec, NM 87410
Phone: (505) 334-6178 Fax: (505) 334-6170
District IV
1220 S. St. Francis Dr., Santa Fe, NM 87505
Phone: (505) 476-3460 Fax: (505) 476-3462

State of New Mexico
Energy, Minerals & Natural Resources Department
OIL CONSERVATION DIVISION
1220 South St. Francis Dr.
Santa Fe, NM 87505

Form C-102
Revised August 1, 2011
Submit one copy to appropriate
District Office
☒ AMENDED REPORT



WELL LOCATION AND ACREAGE DEDICATION PLAT

¹ API Number 30-025-42216		² Pool Code 97899		³ Pool Name WC-025 G-06 S253206M; Bone Spring	
⁴ Property Code 313839		⁵ Property Name CHINCOTEAGUE 32 STATE COM			⁶ Well Number 3H
⁷ OGRID No. 6137		⁸ Operator Name DEVON ENERGY PRODUCTION COMPANY, L.P.			⁹ Elevation 3471.2
¹⁰ Surface Location					
UL or lot no. N	Section 32	Township 24 S	Range 32 E	Lot Idn	Feet from the 200
				North/South line SOUTH	Feet from the 2630
				East/West line WEST	County LEA
¹¹ Bottom Hole Location If Different From Surface					
UL or lot no. C	Section 32	Township 24 S	Range 32 E	Lot Idn	Feet from the 330
				North/South line NORTH	Feet from the 1835
				East/West line WEST	County LEA
¹² Dedicated Acres 160.00		¹³ Joint or Infill	¹⁴ Consolidation Code	¹⁵ Order No.	

No allowable will be assigned to this completion until all interests have been consolidated or a non-standard unit has been approved by the division.

<p>N89°21'27"E 2641.48 FT</p> <p>NW CORNER SEC. 32 LAT. = 32.1811326°N LONG. = 103.7052240°W</p> <p>NMSP EAST (FT) N = 430198.05 E = 735661.86</p> <p>1835'</p> <p>330'</p> <p>BOTTOM OF HOLE</p> <p>BOTTOM OF HOLE LAT. = 32.1802527°N LONG. = 103.6992917°W</p> <p>NMSP EAST (FT) N = 429888.71 E = 737499.09</p> <p>W Q CORNER SEC. 32 LAT. = 32.1738796°N LONG. = 103.7052028°W</p> <p>NMSP EAST (FT) N = 427559.54 E = 735683.83</p> <p>CHINCOTEAGUE "32" STATE COM 3H ELEV. = 3471.2' LAT. = 32.1672046°N (NAD83) LONG. = 103.6966889°W</p> <p>NMSP EAST (FT) N = 425146.72 E = 738332.47</p> <p>SURFACE LOCATION</p> <p>SW CORNER SEC. 32 LAT. = 32.1666258°N LONG. = 103.7051850°W</p> <p>NMSP EAST (FT) N = 424920.70 E = 735704.73</p> <p>N Q CORNER SEC. 5 LAT. = 32.1666583°N LONG. = 103.6972387°W</p> <p>NMSP EAST (FT) N = 424947.33 E = 738163.51</p> <p>2630'</p> <p>S89°22'46"W 2459.46 FT</p> <p>N89°50'28"W 179.64 FT</p>		<p>N89°21'41"E 2641.64 FT</p> <p>NE CORNER SEC. 32 LAT. = 32.1812090°N LONG. = 103.6881520°W</p> <p>NMSP EAST (FT) N = 430257.10 E = 740943.50</p> <p>NOTE: LATITUDE AND LONGITUDE COORDINATES ARE SHOWN USING THE NORTH AMERICAN DATUM OF 1983 (NAD83). LISTED NEW MEXICO STATE PLANE EAST COORDINATES ARE GRID (NAD83). BASIS OF BEARING AND DISTANCES USED ARE NEW MEXICO STATE PLANE EAST COORDINATES MODIFIED TO THE SURFACE.</p> <p>E Q CORNER SEC. 32 LAT. = 32.1739477°N LONG. = 103.6881392°W</p> <p>NMSP EAST (FT) N = 427615.56 E = 740963.30</p> <p>NE CORNER SEC. 5 LAT. = 32.1666813°N LONG. = 103.6886454°W</p> <p>NMSP EAST (FT) N = 424971.16 E = 740822.53</p> <p>S Q CORNER SEC. 32 LAT. = 32.1666550°N LONG. = 103.6966583°W</p> <p>NMSP EAST (FT) N = 424946.83 E = 738343.11</p> <p>SE CORNER SEC. 32 LAT. = 32.1668862°N LONG. = 103.6881230°W</p> <p>NMSP EAST (FT) N = 424973.91 E = 740984.15</p> <p>S89°26'16"W 2480.08 FT</p> <p>S89°01'32"W 161.68 FT</p>		<p>" OPERATOR CERTIFICATION</p> <p>I hereby certify that the information contained herein is true and complete to the best of my knowledge and belief, and that this organization either owns a working interest or unleased mineral interest in the land including the proposed bottom hole location or has a right to drill this well at this location pursuant to a contract with an owner of such a mineral or working interest, or to a voluntary pooling agreement or a compulsory pooling order heretofore entered by the division.</p> <p><i>Linda Good</i> 1/14/2016 Signature Date</p> <p>Linda Good Printed Name</p> <p>linda.good@dvn.com E-mail Address</p> <p>"SURVEYOR CERTIFICATION</p> <p>I hereby certify that the well location shown on this plat was plotted from field notes of actual surveys made by me or under my supervision, and that the same is true and correct to the best of my belief.</p> <p>DECEMBER 23, 2015 Date of Survey</p> <p><i>[Signature]</i> Professional Surveyor</p> <p>Certificate Number PLS 12797 SURVEY NO. 3345A</p>
---------------------------------------------------------------------------------------------------------------------------------------------------------------------------------------------------------------------------------------------------------------------------------------------------------------------------------------------------------------------------------------------------------------------------------------------------------------------------------------------------------------------------------------------------------------------------------------------------------------------------------------------------------------------------------------------------------------------------------------------------------------------------------------------------------------------------------------------------------------------------------------------------------------------------------------------------------------------------------------------------------------------------------------------------	--	------------------------------------------------------------------------------------------------------------------------------------------------------------------------------------------------------------------------------------------------------------------------------------------------------------------------------------------------------------------------------------------------------------------------------------------------------------------------------------------------------------------------------------------------------------------------------------------------------------------------------------------------------------------------------------------------------------------------------------------------------------------------------------------------------------------------------------------------------------------------------------------------------------------------------------------------------------------------------------------------------------------------------------------------------------------------------------------------------------	--	---------------------------------------------------------------------------------------------------------------------------------------------------------------------------------------------------------------------------------------------------------------------------------------------------------------------------------------------------------------------------------------------------------------------------------------------------------------------------------------------------------------------------------------------------------------------------------------------------------------------------------------------------------------------------------------------------------------------------------------------------------------------------------------------------------------------------------------------------------------------------------------------------------------------------------------------------------------------------------------------------------------------------------------------------------------------------------------------------------------------------------------------------------

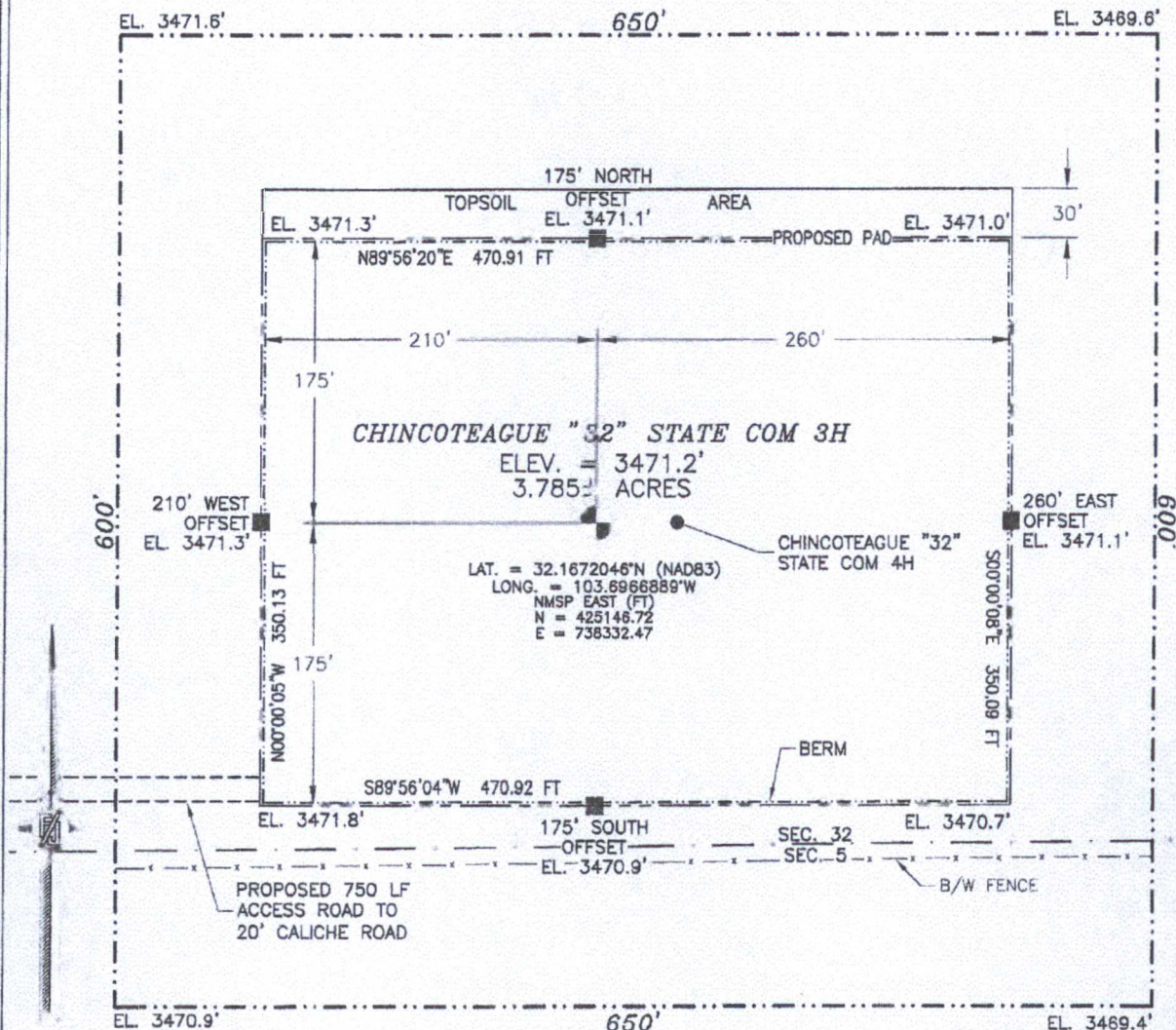
AMENDED C-102

JAN 14 2016

SECTION 32, TOWNSHIP 24 SOUTH, RANGE 32 EAST, N.M.P.M.
LEA COUNTY, STATE OF NEW MEXICO

SITE MAP

NOTE: LATITUDE AND LONGITUDE COORDINATES ARE SHOWN USING THE NORTH AMERICAN DATUM OF 1983 (NAD83). LISTED NEW MEXICO STATE PLANE EAST COORDINATES ARE GRID (NAD83). BASIS OF BEARING AND DISTANCES USED ARE NEW MEXICO STATE PLANE EAST COORDINATES MODIFIED TO THE SURFACE



010 50 100 200

SCALE 1" = 100'
DIRECTIONS TO LOCATION

FROM STATE HIGHWAY 128 AND OR 1 (ORLA ROAD) GO SOUTH ON OR 1 2.4 MILES, TURN RIGHT ON CALICHE ROAD AND GO WEST 1.0 MILES, TURN LEFT AND GO SOUTH 0.5 MILES, BEND RIGHT AND GO WEST 0.1 MILES, BEND LEFT AND GO SOUTHWEST 470', BEND RIGHT AND GO WEST 0.38 MILES, TURN LEFT AND GO SOUTH-SOUTHWEST 0.43 MILES TO A PROPOSED ROAD SURVEY AND FOLLOW FLAGS EAST 750' TO THE PROPOSED SOUTHWEST PAD CORNER FOR THIS LOCATION.

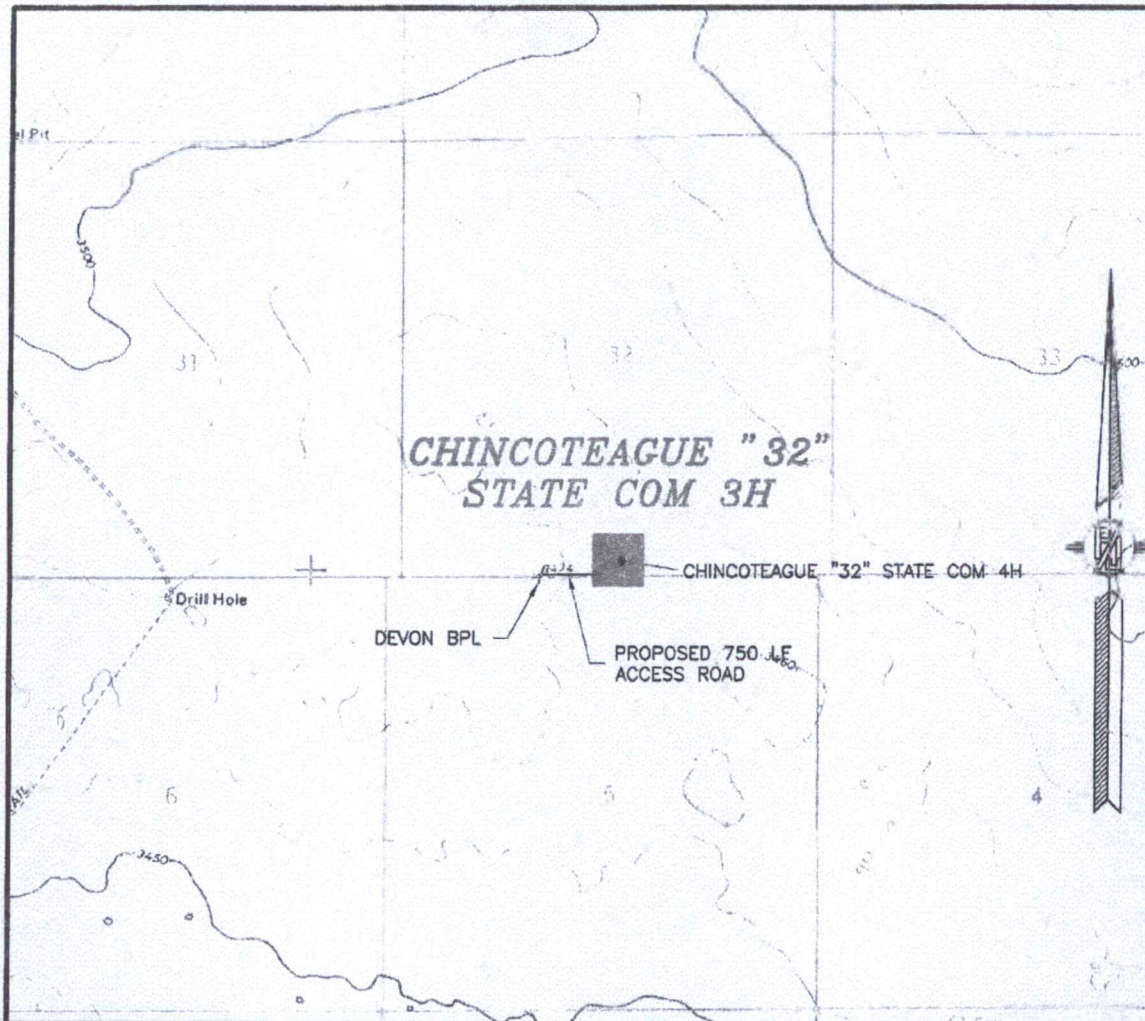
DEVON ENERGY PRODUCTION COMPANY, L.P.
CHINCOTEAGUE "32" STATE COM 3H
LOCATED 200 FT. FROM THE SOUTH LINE
AND 2630 FT. FROM THE WEST LINE OF
SECTION 32, TOWNSHIP 24 SOUTH,
RANGE 32 EAST, N.M.P.M.
LEA COUNTY, STATE OF NEW MEXICO

DECEMBER 21, 2015

SURVEY NO. 3345A

MADRON SURVEYING, INC. 301 SOUTH CANAL (575) 234-3341 CARLSBAD, NEW MEXICO

SECTION 32, TOWNSHIP 24 SOUTH, RANGE 32 EAST, N.M.P.M.
LEA COUNTY, STATE OF NEW MEXICO
LOCATION VERIFICATION MAP



USGS QUAD MAP:
PADUCA BREAKS NW

NOT TO SCALE

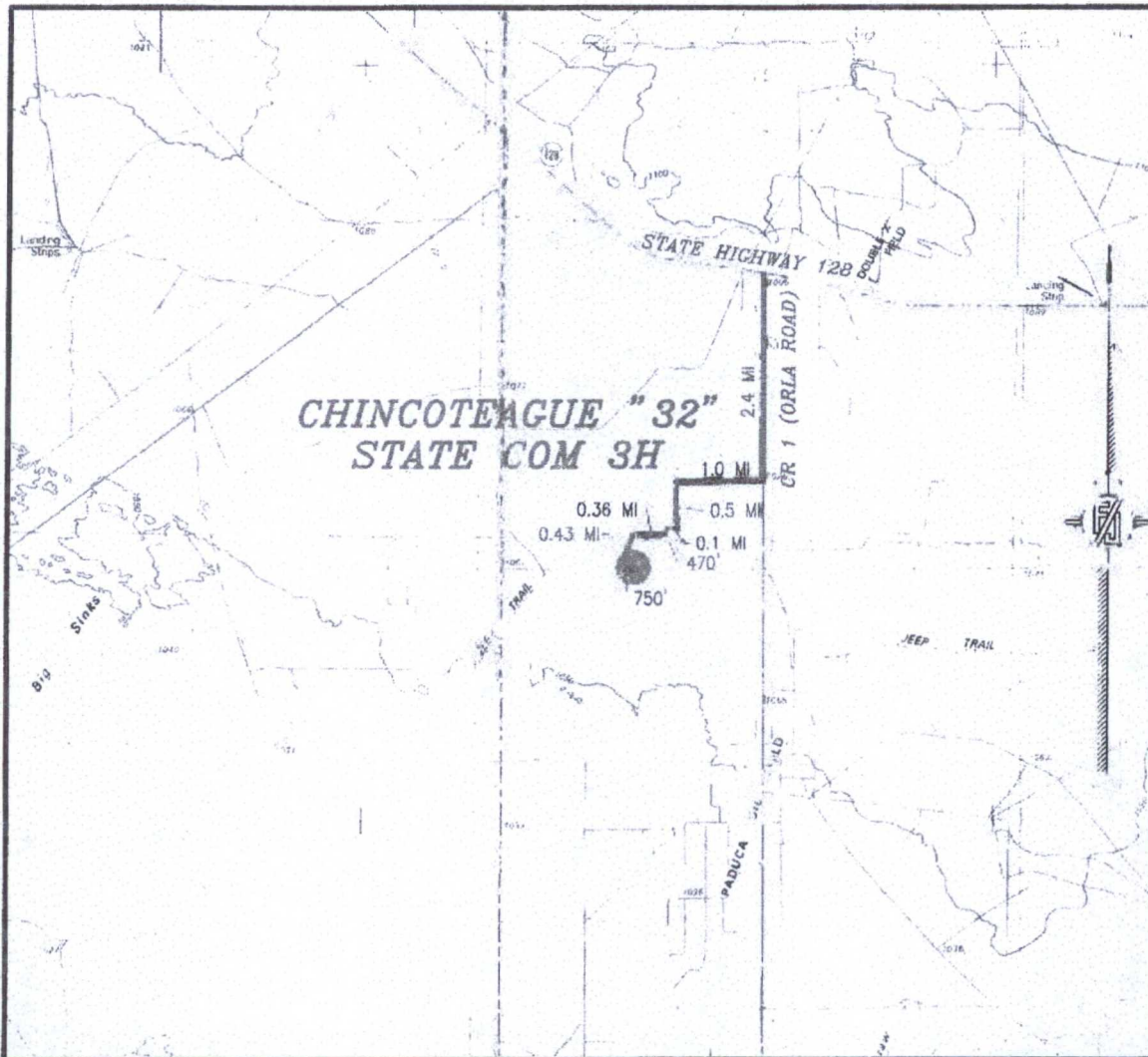
DEVON ENERGY PRODUCTION COMPANY, L.P.
CHINCOTEAGUE "32" STATE COM 3H
LOCATED 200 FT. FROM THE SOUTH LINE
AND 2630 FT. FROM THE WEST LINE OF
SECTION 32, TOWNSHIP 24 SOUTH,
RANGE 32 EAST, N.M.P.M.
LEA COUNTY, STATE OF NEW MEXICO

DECEMBER 21, 2015

MADRON SURVEYING, INC. 301 SOUTH CANAL (575) 234-3341 CARLSBAD, NEW MEXICO

SURVEY NO. 3345A

SECTION 32, TOWNSHIP 24 SOUTH, RANGE 32 EAST, N.M.P.M.
LEA COUNTY, STATE OF NEW MEXICO
VICINITY MAP



DISTANCES IN MILES

NOT TO SCALE

DEVON ENERGY PRODUCTION COMPANY, L.P.

CHINCOTEAGUE "32" STATE COM 3H

LOCATED 200 FT. FROM THE SOUTH LINE

AND 2630 FT. FROM THE WEST LINE OF

SECTION 32, TOWNSHIP 24 SOUTH,

RANGE 32 EAST, N.M.P.M.

LEA COUNTY, STATE OF NEW MEXICO

DECEMBER 21, 2015

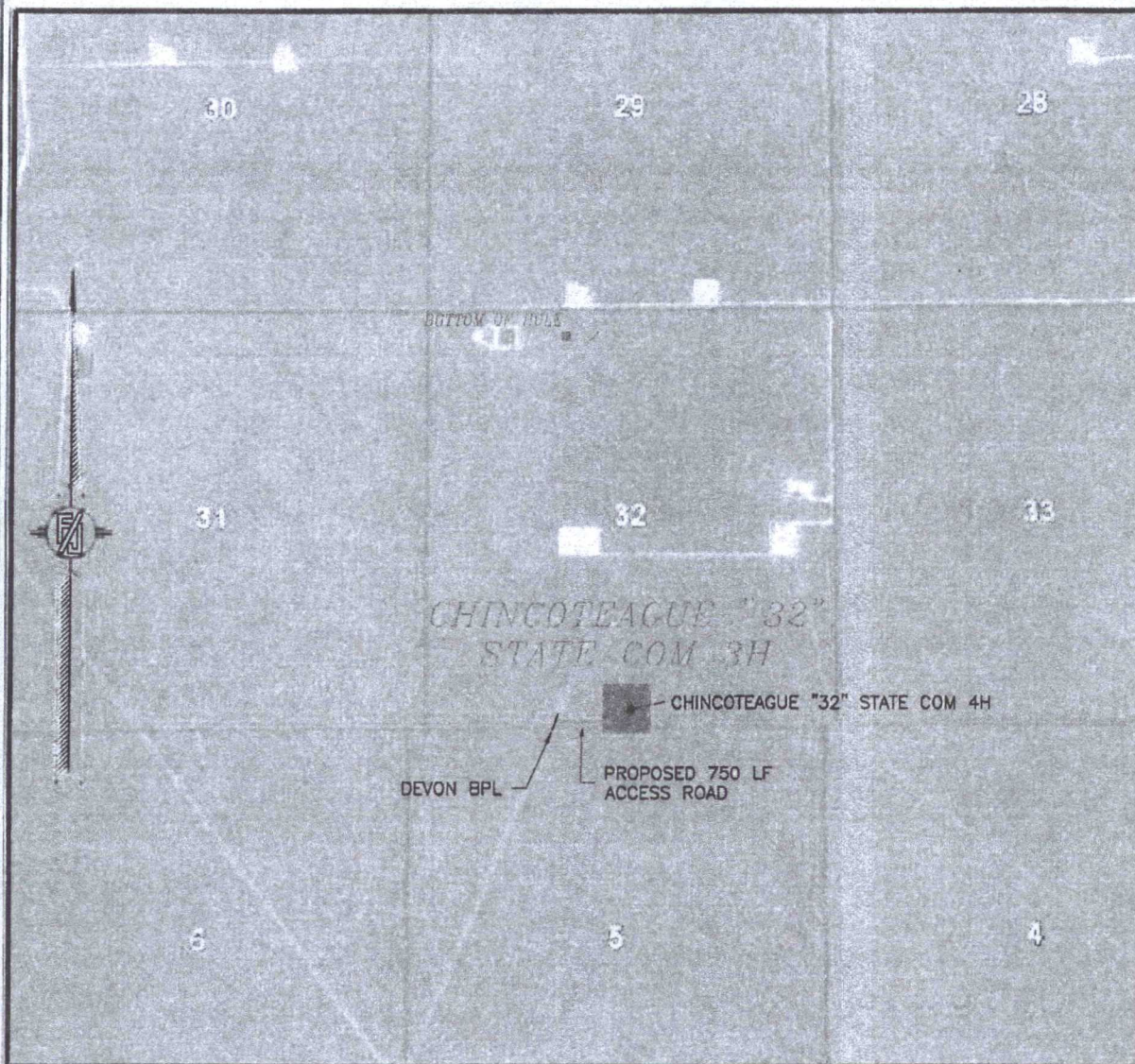
DIRECTIONS TO LOCATION

FROM STATE HIGHWAY 128 AND CR 1 (ORLA ROAD) GO SOUTH ON CR 1 2.4 MILES, TURN RIGHT ON CALICHE ROAD AND GO WEST 1.0 MILES, TURN LEFT AND GO SOUTH 0.5 MILES, BEND RIGHT AND GO WEST 0.1 MILES, BEND LEFT AND GO SOUTHWEST 470'. BEND RIGHT AND GO WEST 0.36 MILES, TURN LEFT AND GO SOUTH-SOUTHWEST 0.43 MILES TO A PROPOSED ROAD SURVEY AND FOLLOW FLAGS EAST 750' TO THE PROPOSED SOUTHWEST PAD CORNER FOR THIS LOCATION.

SURVEY NO. 3345A

MADRON SURVEYING, INC. 301 SOUTH CANAL (575) 234-3341 CARLSBAD, NEW MEXICO

SECTION 32, TOWNSHIP 24 SOUTH, RANGE 32 EAST, N.M.P.M.
LEA COUNTY, STATE OF NEW MEXICO
AERIAL PHOTO



NOT TO SCALE
AERIAL PHOTO:
GOOGLE EARTH
FEBRUARY 2014

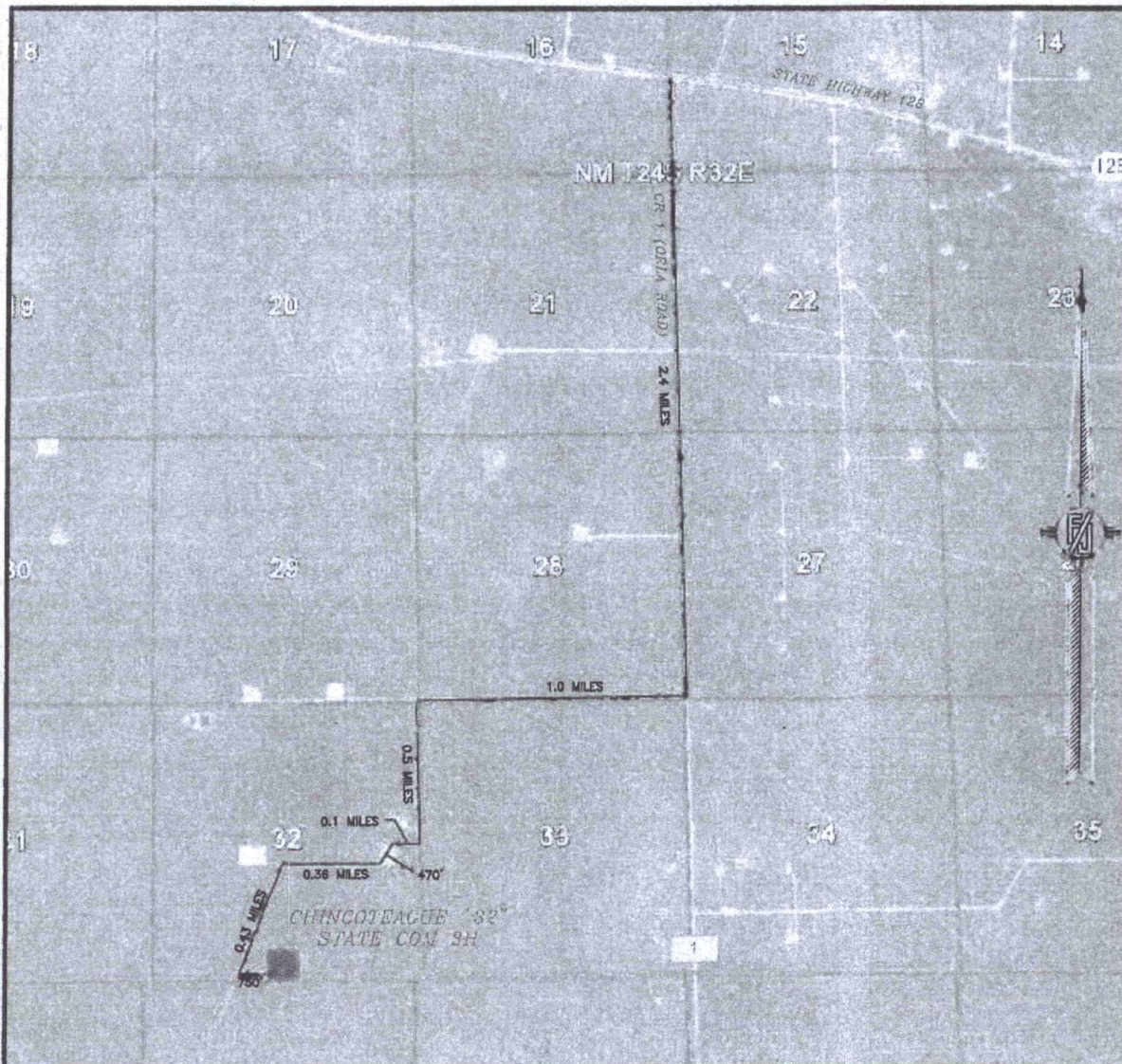
DEVON ENERGY PRODUCTION COMPANY, L.P.
CHINCOTEAGUE "32" STATE COM 3H
LOCATED 200 FT. FROM THE SOUTH LINE
AND 2630 FT. FROM THE WEST LINE OF
SECTION 32, TOWNSHIP 24 SOUTH,
RANGE 32 EAST, N.M.P.M.
LEA COUNTY, STATE OF NEW MEXICO

DECEMBER 21, 2015

SURVEY NO. 3345A

MADRON SURVEYING, INC. 301 SOUTH CAHILL (575) 234-3341 CARLSBAD, NEW MEXICO

SECTION 32, TOWNSHIP 24 SOUTH, RANGE 32 EAST, N.M.P.M.
LEA COUNTY, STATE OF NEW MEXICO
ACCESS AERIAL ROUTE MAP



NOT TO SCALE
AERIAL PHOTO:
GOOGLE EARTH
FEBRUARY 2014

DEVON ENERGY PRODUCTION COMPANY, L.P.
CHINCOTEAGUE "32" STATE COM 3H
LOCATED 200 FT. FROM THE SOUTH LINE
AND 2630 FT. FROM THE WEST LINE OF
SECTION 32, TOWNSHIP 24 SOUTH,
RANGE 32 EAST, N.M.P.M.
LEA COUNTY, STATE OF NEW MEXICO

DECEMBER 21, 2015

SURVEY NO. 3345A

MADRON SURVEYING, INC. 301 SOUTH CANAL (575) 234-3341 CARLSBAD, NEW MEXICO