

District I
1625 N. French Dr., Hobbs, NM 88240
Phone: (575) 393-6161 Fax: (575) 393-0720
District II
811 S. First St., Artesia, NM 88210
Phone: (575) 748-1283 Fax: (575) 748-9720
District III
1000 Rio Brazos Road, Aztec, NM 87410
Phone: (505) 334-6178 Fax: (505) 334-6170
District IV
1220 S. St. Francis Dr., Santa Fe, NM 87505
Phone: (505) 476-3460 Fax: (505) 476-3462

State of New Mexico
Energy, Minerals & Natural Resources Department
OIL CONSERVATION DIVISION
1220 South St. Francis Dr.
Santa Fe, NM 87505

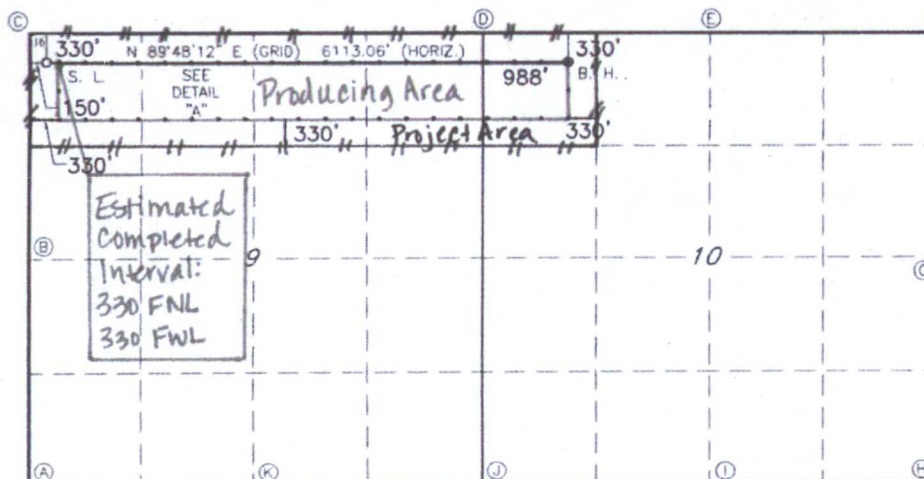
Form C-102
Revised August 1, 2011
Submit one copy to appropriate
District Office

☐ AMENDED REPORT

WELL LOCATION AND ACREAGE DEDICATION PLAT

1 API Number 30-025-41489		2 Pool Code 44500		3 Pool Name Maljamar; Yeso West	
4 Property Code 40134		5 Property Name SNEED 9 FEDERAL COM			
6 Well Number 21H					
7 UORU NO. 229137		8 Operator Name COG OPERATING, LLC			
9 Elevation 4089'					
10 Surface Location					
U/L or lot no. D	Section 9	Township 17S	Range 32E	Lot Idn 330	Feet from the 330
North/South line NORTH		Feet from the 150		East/West line WEST	
County LEA					
11 Bottom Hole Location If Different From Surface					
U/L or lot no. D	Section 10	Township 17S	Range 32E	Lot Idn 330	Feet from the 330
North/South line NORTH		Feet from the 988		East/West line WEST	
County LEa					
12 Dedicated Acres 200		13 Joint or Infill		14 Consolidation Code	
15 Order No.					

No allowable will be assigned to this completion until all interest have been consolidated or a non-standard unit has been approved by the division.



17 OPERATOR CERTIFICATION
I hereby certify that the information contained herein is true and complete to the best of my knowledge and belief, and that this organization either owns a working interest or unleased mineral interest in the land including the proposed bottom hole location or has a right to drill this well at this location pursuant to a contract with an owner of such a mineral or working interest, or to a voluntary pooling agreement or a compulsory pooling order hereinafter entered by the division.

Signature: *[Signature]* Date: **2-5-15**
Printed Name: **Kelly J. Holly**
E-mail Address: **kholly@concho.com**

18 SURVEYOR CERTIFICATION
I hereby certify that the well location shown on this plat was plotted from field notes of actual surveys made by me or under my supervision, and that the same is true and correct to the best of my belief.

Date of Survey: **5/31/13**
Signature and Seal of Professional Surveyor: *[Signature]*
Certificate Number: **19680**

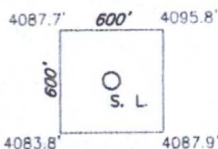
GEODETIC DATA
NAD 27 GRID - NM EAST

SURFACE LOCATION
N 675348.2 - E 670215.8

LAT: 32.855388° N
LONG: 103.779037° W

BOTTOM LOCATION
N 675369.2 - E 676327.4

DETAIL "A"



CORNER DATA

NAD 27 GRID - NM EAST

A: FOUND BRASS CAP "1912"
N 670400.2 - E 670086.3

B: FOUND BRASS CAP "1913"
N 673038.1 - E 670068.2

C: FOUND PK NAIL IN ROAD
N 675677.6 - E 670065.6

D: CALCULATED CORNER
N 675698.0 - E 675338.3

E: FOUND 3/4" IRON PIPE
N 675700.9 - E 677972.8

F: FOUND BRASS CAP "1913"
N 675706.5 - E 680608.1

G: FOUND BRASS CAP "1913"
N 673071.1 - E 680625.4

CORNER DATA

NAD 27 GRID - NM EAST

H: FOUND BRASS CAP "1913"
N 670433.3 - E 680638.7

I: FOUND BRASS CAP "1913"
N 670430.0 - E 678005.6

J: FOUND BRASS CAP "1913"
N 670415.5 - E 675366.5

K: FOUND 1" IRON PIPE
N 670407.8 - E 672725.7

RRC - Firm No.: TX 10193838 NM 465451 - Job No.: LS130060