

District I
1625 N. French Dr., Hobbs, NM 88240
Phone: (575) 393-6161 Fax: (575) 393-0720
District II
811 S. First St., Artesia, NM 88210
Phone: (575) 748-1283 Fax: (575) 748-9720
District III
1000 Rio Brazos Road, Aztec, NM 87410
Phone: (505) 334-6178 Fax: (505) 334-6170
District IV
1220 S. St. Francis Dr., Santa Fe, NM 87505
Phone: (505) 476-3460 Fax: (505) 476-3462

State of New Mexico
Energy, Minerals & Natural Resources Department
OIL CONSERVATION DIVISION
1220 South St. Francis Dr.
Santa Fe, NM 87505

Form C-102
Revised August 1, 2011
Submit one copy to appropriate
District Office

RECEIVED

☐ AMENDED REPORT

WELL LOCATION AND ACREAGE DEDICATION PLAT

¹ API Number 30-025-43084	² Pool Code 97088	³ Pool Name WC-025-G-08 52535340-BS
⁴ Property Code 314082	⁵ Property Name TELE DELUX 32 STATE	
⁷ OGRID No. 270329	⁸ Operator Name ENDURANCE RESOURCES, LLC	⁹ Elevation 3220.1

¹⁰ Surface Location

UL or lot no.	Section	Township	Range	Lot Idn	Feet from the	North/South line	Feet from the	East/West line	County
A	32	25 S	35 E		300	NORTH	485	EAST	LEA

¹¹ Bottom Hole Location If Different From Surface

UL or lot no.	Section	Township	Range	Lot Idn	Feet from the	North/South line	Feet from the	East/West line	County
P	32	25 S	35 E		330	SOUTH	330	EAST	LEA

¹² Dedicated Acres 160	¹³ Joint or Infill	¹⁴ Consolidation Code	¹⁵ Order No.
---	-------------------------------	----------------------------------	-------------------------

No allowable will be assigned to this completion until all interests have been consolidated or a non-standard unit has been approved by the division.

<p>N89°35'41"E 2642.82 FT</p> <p>NW CORNER SEC. 32 LAT. = 32°05'38.838"N LONG. = 103°23'53.036"W</p>		<p>N89°36'37"E 2642.31 FT</p> <p>N/4 CORNER SEC. 32 LAT. = 32°05'38.795"N LONG. = 103°23'22.320"W</p>		<p>SURFACE LOCATION 300' 485'</p>	
		<p>TELE DELUX "32" STATE #706H ELEV. = 3220.1' LAT. = 32°05'35.785"N (NAD83) LONG. = 103°22'57.242"W</p>		<p>NE CORNER SEC. 32 LAT. = 32°05'38.743"N LONG. = 103°22'51.609"W</p>	
		<p>32.0932772 -103.3825683 NAD83</p>			
<p>W/4 CORNER SEC. 32 LAT. = 32°05'12.847"N LONG. = 103°23'52.989"W</p>				<p>E/4 CORNER SEC. 32 LAT. = 32°05'12.633"N LONG. = 103°22'51.567"W</p>	
<p>NOTE: LATITUDE AND LONGITUDE COORDINATES ARE SHOWN USING THE NORTH AMERICAN DATUM OF 1983 (NAD83) IN DEGREES MINUTES DECIMAL SECONDS FORMAT. BASIS OF BEARING IS NEW MEXICO STATE PLANE EAST (NAD83) COORDINATES MODIFIED TO SURFACE.</p>					
		<p>BOTTOM OF HOLE LAT. = 32°04'49.809"N LONG. = 103°22'55.385"W</p>		<p>SE CORNER SEC. 32 LAT. = 32°04'46.537"N LONG. = 103°22'51.548"W</p>	
<p>SW CORNER SEC. 32 LAT. = 32°04'46.837"N LONG. = 103°23'52.960"W</p>		<p>S/4 CORNER SEC. 32 LAT. = 32°04'46.595"N LONG. = 103°23'22.242"W</p>		<p>BOTTOM OF HOLE 330'</p>	
S89°35'34"W 2643.38 FT		S89°37'28"W 2641.33 FT			

17 OPERATOR CERTIFICATION

I hereby certify that the information contained herein is true and complete to the best of my knowledge and belief, and that this organization either owns a working interest or unleased mineral interest in the land including the proposed bottom hole location or has a right to drill this well at this location pursuant to a contract with an owner of such a mineral or working interest, or to a voluntary pooling agreement or a compulsory pooling order heretofore entered by the division.

Signature: *Tinlee Tilton* Date: 2/23/16

Printed Name: TINLEE TILTON

E-mail Address: tinlee@enduranceresourcesllc.com

18 SURVEYOR CERTIFICATION

I hereby certify that the well location shown on this plat was plotted from field notes of actual surveys made by me or under my supervision, and that the same is true and correct to the best of my belief.

Signature and Seal of Professional Surveyor: *Edmon F. Jaramillo*

Date of Survey: DECEMBER 23, 2015

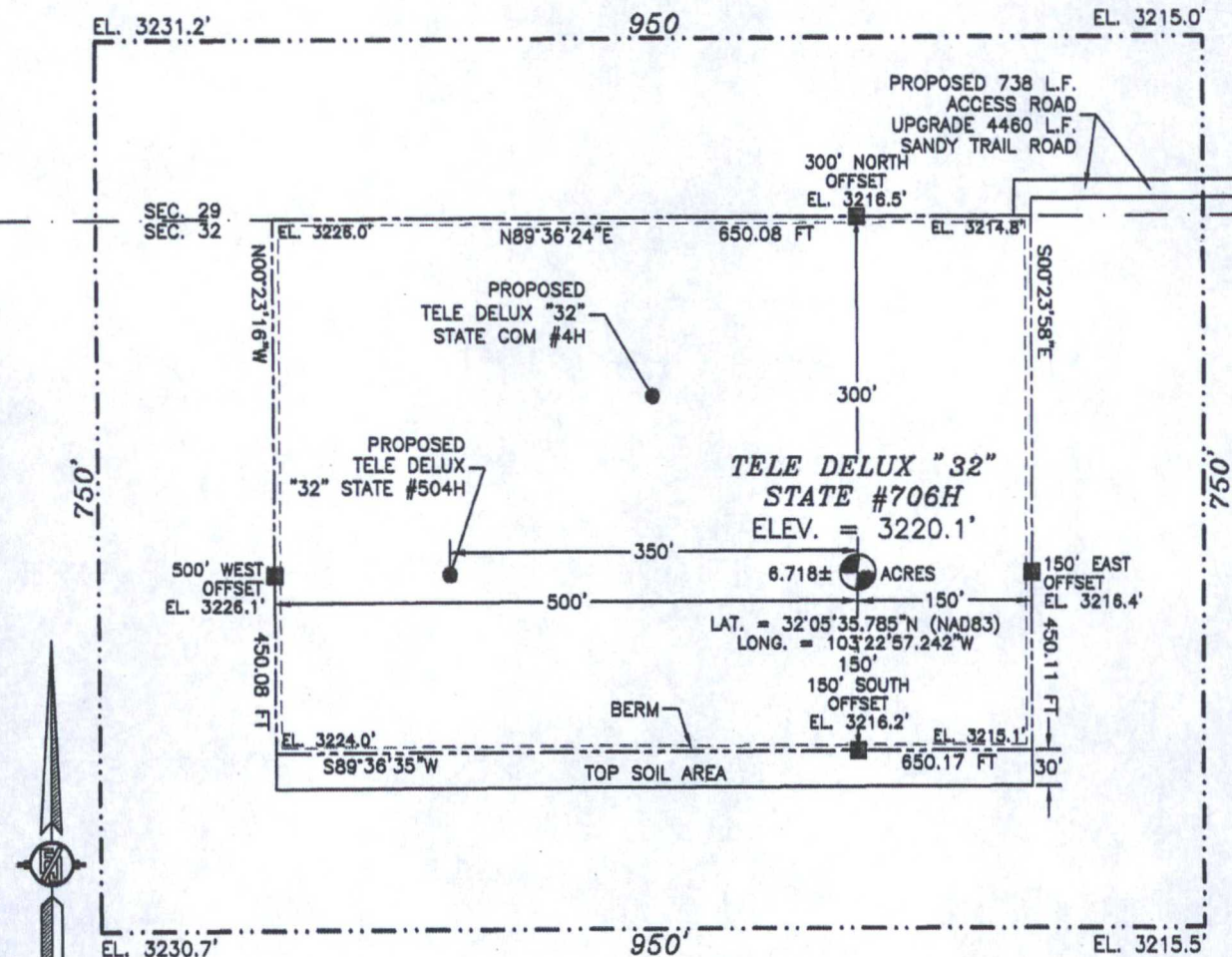
Certificate Number: EDMON F. JARAMILLO, PLS 12797

SURVEY NO. 3280A

FEB 26 2016

SECTION 32, TOWNSHIP 25 SOUTH, RANGE 35 EAST, N.M.P.M.
LEA COUNTY, STATE OF NEW MEXICO
SITE MAP

NOTE: LATITUDE AND LONGITUDE COORDINATES ARE SHOWN USING THE NORTH AMERICAN DATUM OF 1983 (NAD83) IN DEGREES, MINUTES AND DECIMAL SECONDS FORMAT. BASIS OF BEARING IS NEW MEXICO STATE PLANE EAST (NAD83) COORDINATES MODIFIED TO SURFACE.



015 75 150 300

SCALE 1" = 150'

DIRECTIONS TO LOCATION

FROM STATE HWY. 128 AND CR. #2 BATTLE AXE, GO EAST ON HWY. 128 0.2 MILES, TURN RIGHT ON CALICHE ROAD AND GO SOUTH 4.2 MILES, TURN LEFT AND GO SOUTHEAST 1.2 MILES, BEND RIGHT AND GO SOUTH 0.7 MILES, TURN LEFT AND GO EAST 0.9 MILES, TURN RIGHT ON SANDY TRAIL ROAD AND GO SOUTH 0.9 MILES TO A PROPOSED ROAD SURVEY AND FOLLOW FLAGS WEST 723', THEN SOUTH 15' TO THE PROPOSED NORTHEAST PAD CORNER FOR THIS LOCATION.

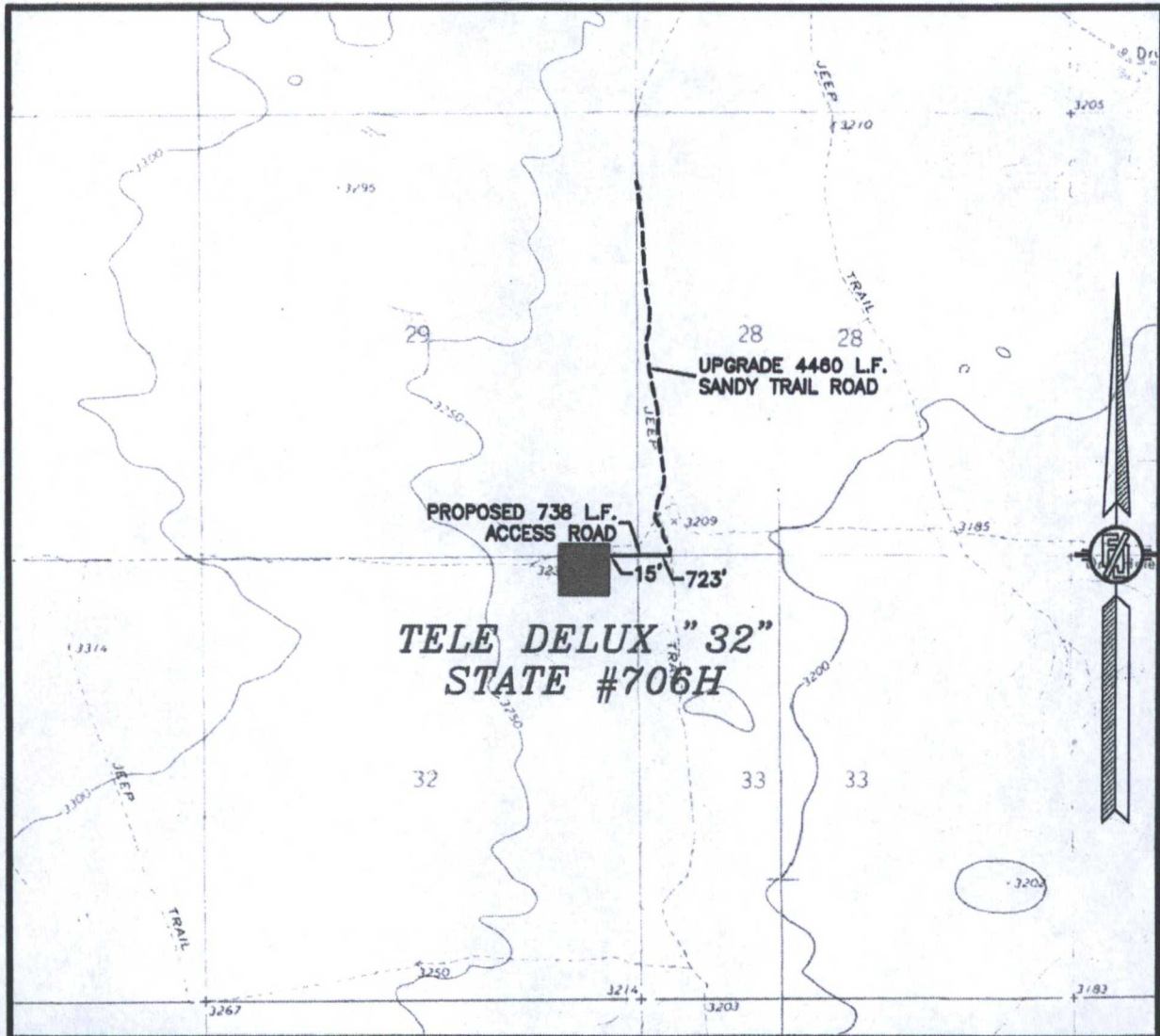
ENDURANCE RESOURCES, LLC
TELE DELUX "32" STATE #706H
LOCATED 300 FT. FROM THE NORTH LINE
AND 485 FT. FROM THE EAST LINE OF
SECTION 32, TOWNSHIP 25 SOUTH,
RANGE 35 EAST, N.M.P.M.
LEA COUNTY, STATE OF NEW MEXICO

DECEMBER 21, 2015

SURVEY NO. 3280A

MADRON SURVEYING, INC. 301 SOUTH CANAL (575) 234-3341 CARLSBAD, NEW MEXICO

SECTION 32, TOWNSHIP 25 SOUTH, RANGE 35 EAST, N.M.P.M.
LEA COUNTY, STATE OF NEW MEXICO
LOCATION VERIFICATION MAP



USGS QUAD MAP:
ANDREWS PLACE

NOT TO SCALE

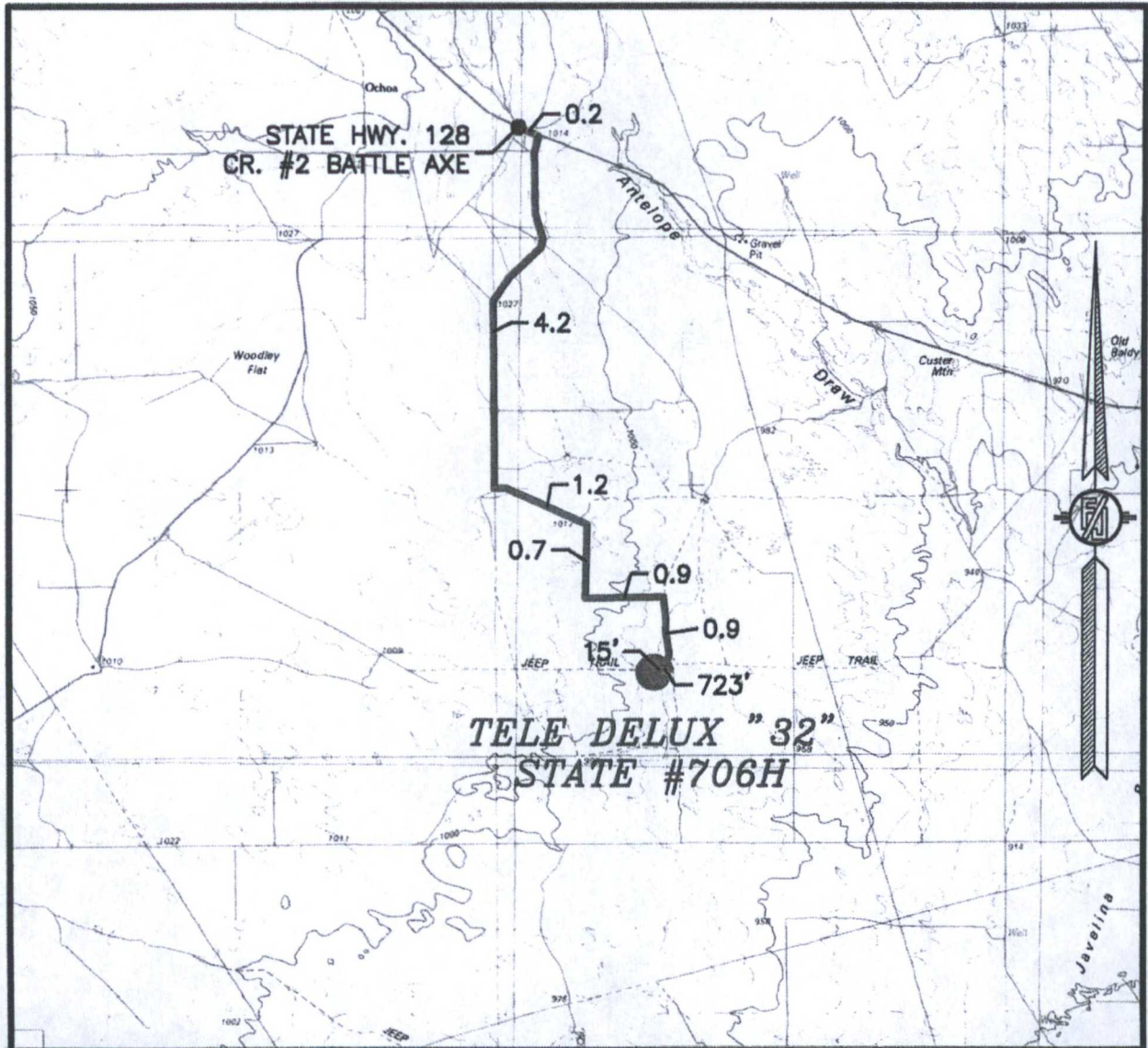
ENDURANCE RESOURCES, LLC
TELE DELUX "32" STATE #706H
LOCATED 300 FT. FROM THE NORTH LINE
AND 485 FT. FROM THE EAST LINE OF
SECTION 32, TOWNSHIP 25 SOUTH,
RANGE 35 EAST, N.M.P.M.
LEA COUNTY, STATE OF NEW MEXICO

DECEMBER 21, 2015

MADRON SURVEYING, INC. 301 SOUTH CANAL (575) 234-3341 CARLSBAD, NEW MEXICO

SURVEY NO. 3280A

SECTION 32, TOWNSHIP 25 SOUTH, RANGE 35 EAST, N.M.P.M.
LEA COUNTY, STATE OF NEW MEXICO
VICINITY MAP



DISTANCES IN MILES

NOT TO SCALE

DIRECTIONS TO LOCATION

FROM STATE HWY. 128 AND CR. #2 BATTLE AXE, GO EAST ON HWY. 128 0.2 MILES, TURN RIGHT ON CALICHE ROAD AND GO SOUTH 4.2 MILES, TURN LEFT AND GO SOUTHEAST 1.2 MILES, BEND RIGHT AND GO SOUTH 0.7 MILES, TURN LEFT AND GO EAST 0.9 MILES, TURN RIGHT ON SANDY TRAIL ROAD AND GO SOUTH 0.9 MILES TO A PROPOSED ROAD SURVEY AND FOLLOW FLAGS WEST 723', THEN SOUTH 15' TO THE PROPOSED NORTHEAST PAD CORNER FOR THIS LOCATION.

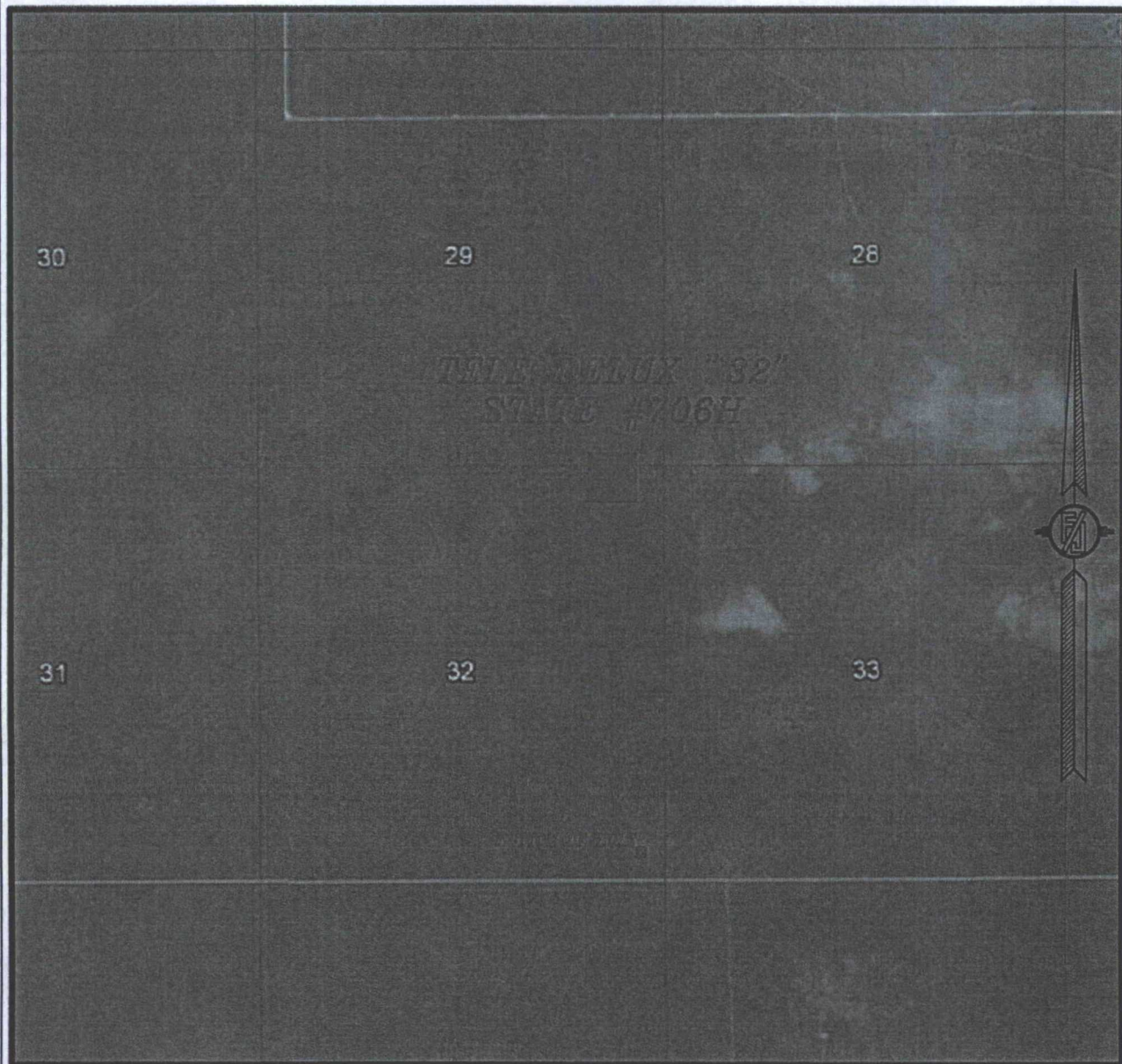
ENDURANCE RESOURCES, LLC
TELE DELUX "32" STATE #706H
LOCATED 300 FT. FROM THE NORTH LINE
AND 485 FT. FROM THE EAST LINE OF
SECTION 32, TOWNSHIP 25 SOUTH,
RANGE 35 EAST, N.M.P.M.
LEA COUNTY, STATE OF NEW MEXICO

DECEMBER 21, 2016

MADRON SURVEYING, INC. 301 SOUTH CANAL (575) 234-3341 CARLSBAD, NEW MEXICO

SURVEY NO. 3280A

SECTION 32, TOWNSHIP 25 SOUTH, RANGE 35 EAST, N.M.P.M.
LEA COUNTY, STATE OF NEW MEXICO
AERIAL PHOTO



NOT TO SCALE
AERIAL PHOTO:
GOOGLE EARTH
APR. 2013

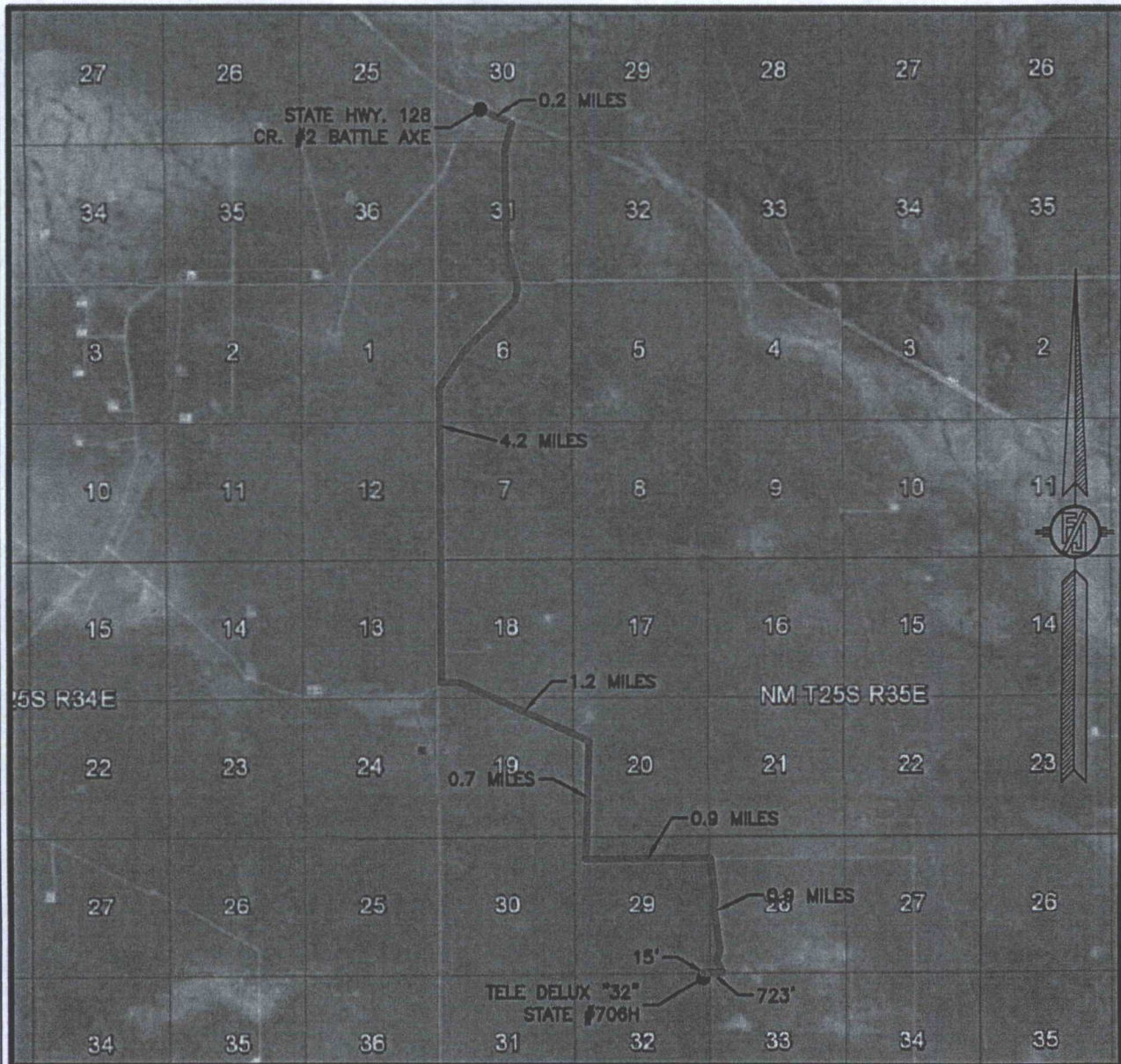
ENDURANCE RESOURCES, LLC
TELE DELUX "32" STATE #706H
LOCATED 300 FT. FROM THE NORTH LINE
AND 485 FT. FROM THE EAST LINE OF
SECTION 32, TOWNSHIP 25 SOUTH,
RANGE 35 EAST, N.M.P.M.
LEA COUNTY, STATE OF NEW MEXICO

DECEMBER 21, 2015

SURVEY NO. 3280A

MADRON SURVEYING, INC. 301 SOUTH CANAL (575) 234-3341 CARLSBAD, NEW MEXICO

SECTION 32, TOWNSHIP 25 SOUTH, RANGE 35 EAST, N.M.P.M.
LEA COUNTY, STATE OF NEW MEXICO
AERIAL ACCESS ROUTE MAP



NOT TO SCALE
AERIAL PHOTO:
GOOGLE EARTH
APR. 2013

ENDURANCE RESOURCES, LLC
TELE DELUX "32" STATE #706H
LOCATED 300 FT. FROM THE NORTH LINE
AND 485 FT. FROM THE EAST LINE OF
SECTION 32, TOWNSHIP 25 SOUTH,
RANGE 35 EAST, N.M.P.M.
LEA COUNTY, STATE OF NEW MEXICO

DECEMBER 21, 2015

SURVEY NO. 3280A

MADRON SURVEYING, INC. 301 SOUTH CANAL (575) 234-3341 CARLSBAD, NEW MEXICO