

DISTRICT I
1625 N. French Dr., Hobbs, NM 88240
Phone (575) 393-6161 Fax: (575) 393-0720

DISTRICT II
811 S. First St., Artesia, NM 88210
Phone (575) 748-1283 Fax: (575) 748-9720

DISTRICT III
1000 Rio Brazos Rd., Aztec, NM 87410
Phone (505) 334-6178 Fax: (505) 334-6170

DISTRICT IV
1218 S. St. Francis Dr., Santa Fe, NM 87505
Phone (505) 476-3480 Fax: (505) 476-3482

State of New Mexico
Energy, Minerals and Natural Resources Department

Form C-102
Revised August 1, 2011

OIL CONSERVATION DIVISION

1218 South St. Francis Dr.
Santa Fe, New Mexico 87505

HOBBS OGD

Submit one copy to appropriate
District Office

APR 27 2016

RECEIVED

WELL LOCATION AND ACREAGE DEDICATION PLAT

AMENDED REPORT

API Number 30-025-01606	Pool Code 19950	Pool Name E-K; YATES-SEVEN RIVERS-QUEEN
Property Code 22434	Property Name E-K QUEEN UNIT	Well Number 211
OGRID No. 20497	Operator Name SEELY OIL COMPANY	Elevation 3984

Surface Location

UL or lot No.	Section	Township	Range	Lot Idn	FEET from the	North/South line	FEET from the	East/West line	County
G	13	18 S	33 E		1980	NORTH	2296	EAST	LEA

Bottom Hole Location If Different From Surface

UL or lot No.	Section	Township	Range	Lot Idn	FEET from the	North/South line	FEET from the	East/West line	County

Dedicated Acres	Joint or Infill	Consolidation Code	Order No.
40			

NO ALLOWABLE WILL BE ASSIGNED TO THIS COMPLETION UNTIL ALL INTERESTS HAVE BEEN CONSOLIDATED
OR A NON-STANDARD UNIT HAS BEEN APPROVED BY THE DIVISION

N.: 639103.6 E.: 759054.4 (NAD-83)	N.: 639130.3 E.: 761689.0 (NAD-83)	N.: 639154.3 E.: 764327.7 (NAD-83)
SURFACE LOCATION Lat - N 32°44'58.26" Long - W 103°36'55.62" NMSPCE - N 637154.2 E 762045.4 (NAD-83)		
N.: 633823.6 E.: 759069.8 (NAD-83)		N.: 633880.6 E.: 764359.8 (NAD-83)

OPERATOR CERTIFICATION

I hereby certify that the information contained herein is true and complete to the best of my knowledge and belief, and that this organization either owns a working interest or unleased mineral interest in the land including the proposed bottom hole location or has a right to drill this well at this location pursuant to a contract with an owner of such a mineral or working interest, or to a voluntary pooling agreement or a compulsory pooling order heretofore entered by the division.

Signature: Brian Wood Date: 12-16-14

brian@permitswest.com

Email Address

SURVEYOR CERTIFICATION

I hereby certify that the well location shown on this plat was plotted from field notes of actual surveys made by me or under my supervision, and that the same is true and correct to the best of my belief.

SEPTEMBER 06 2014

Date Surveyed

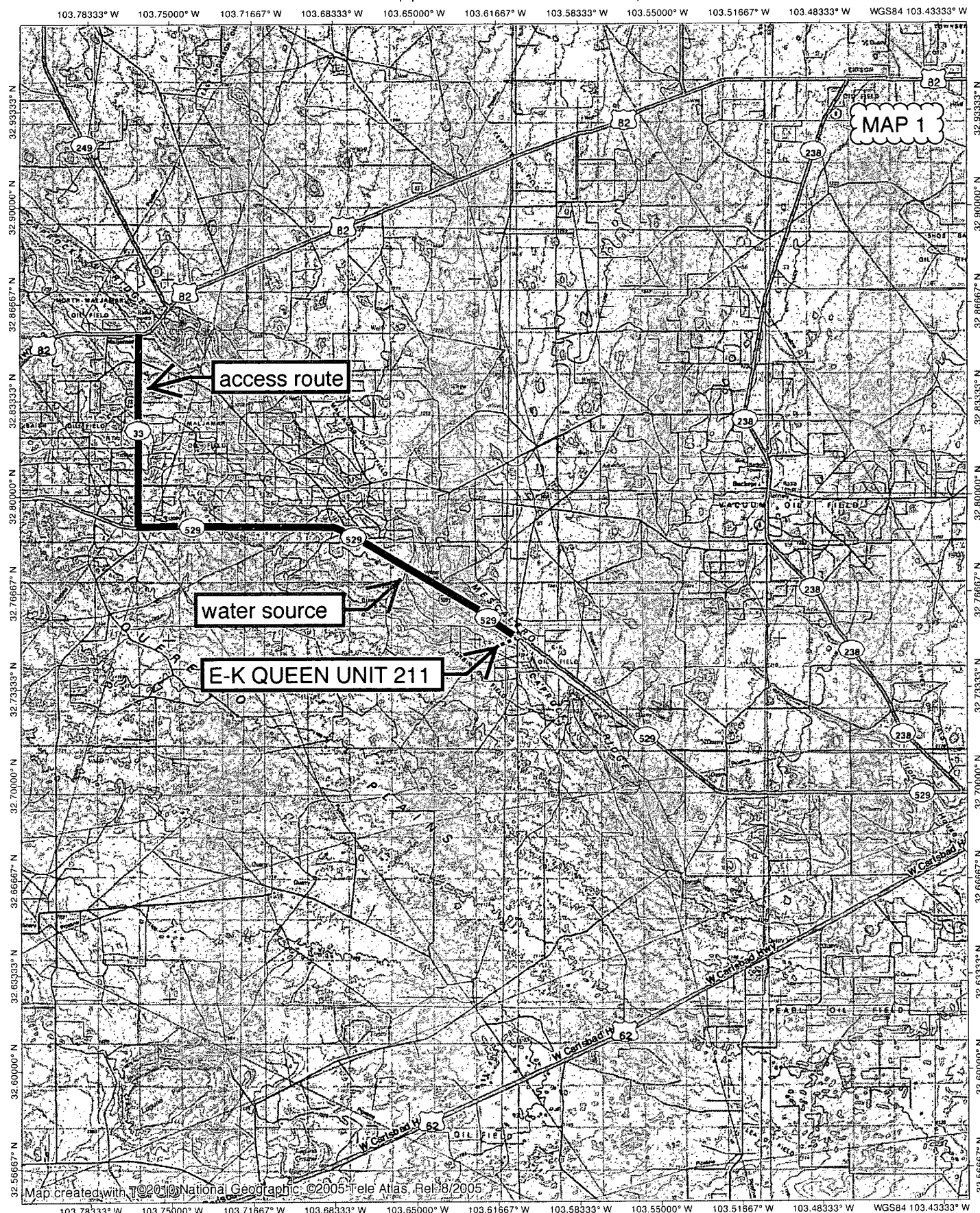
Signature & Seal of Professional Surveyor

Certificate No. 7977

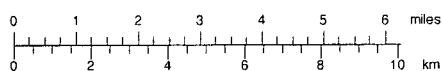
Scale: 1" = 1000'

WO Num.: 30870

APR 29 2016



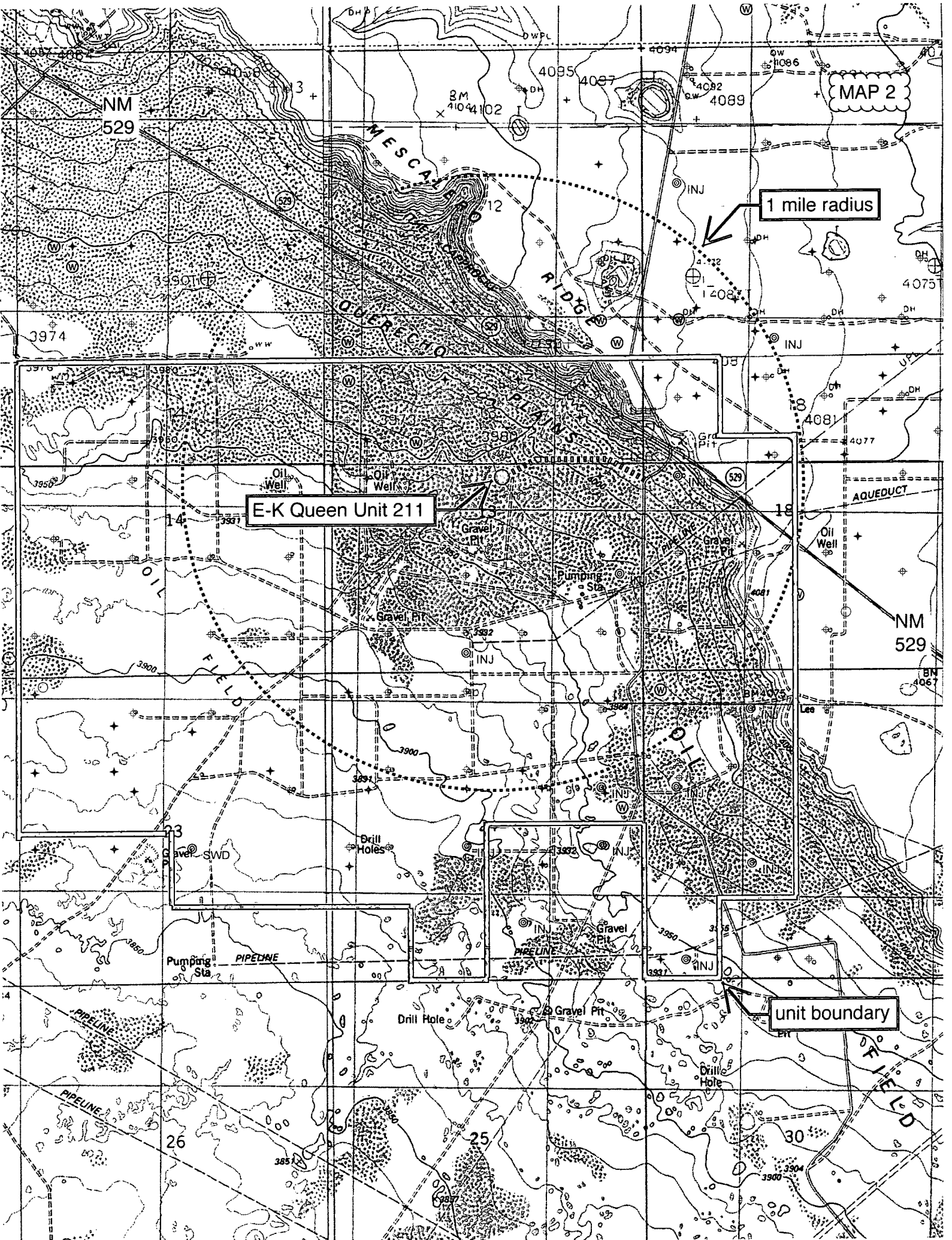
Map created with T©2010 National Geographic ©2005 Tele Atlas, Rel. 8/2005



TN 4 MN

7°

12/14/14



MAP 2

1 mile radius

E-K Queen Unit 211

NM 529

unit boundary

MAP 3

Google earth

Imagery Date: 2/13/2014 Lat: 32.750456 Lon: -103.610943 elev 4014 ft. GCS: 85 S 1 ft. Q

CR 125

NIM 529

NM 529

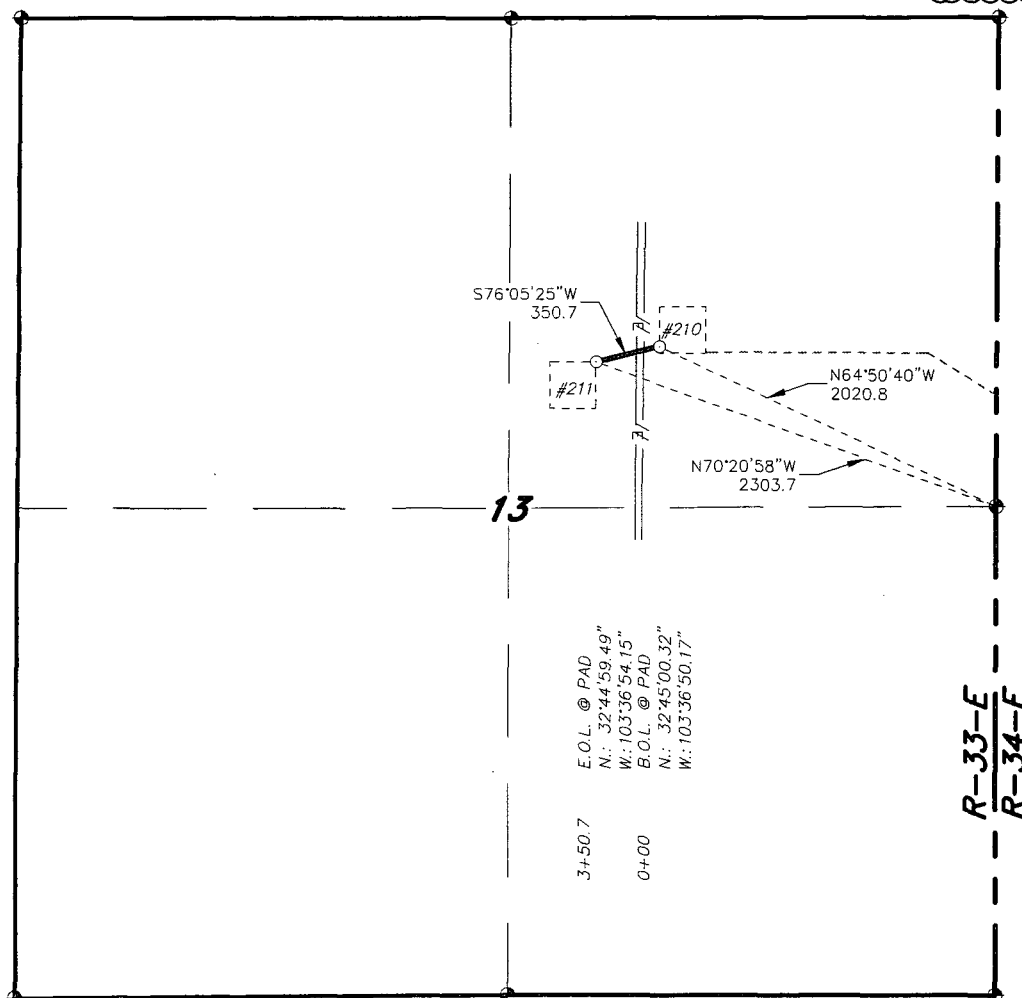
210

211

proposed road,
power line, &
pipeline



NEW MEXICO.



GARY L. JONES

No. 7977

No. 5074

GARY L. JOHNSON
basin
surveys
focused on excellence
in the oilfield

P.O. Box 1786

1120 N. West County Rd.
Hobbs, New Mexico 88241

(575) 393-7316 - Office

(575) 392-2206 - Fax
basinsurveys.com

1000 0 1000 2000 FEET

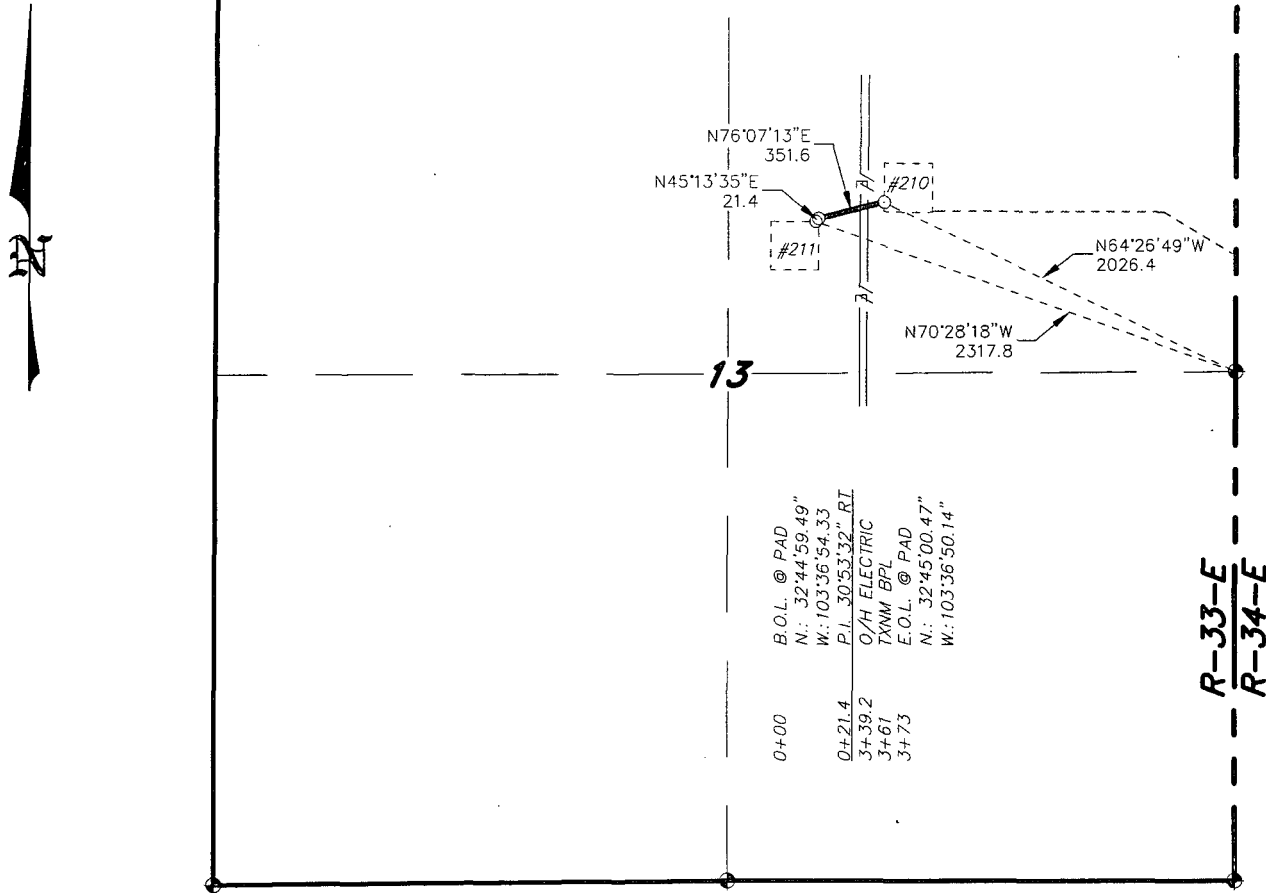
SEELY OIL COMPANY

REF: PROPOSED LEASE ROAD TO E-K QUEEN UNIT 211

A ROAD CROSSING USA LAND IN
SECTION 13, TOWNSHIP 18 SOUTH, RANGE 33 EAST,
N.M.P.M., LEA COUNTY, NEW MEXICO.

SECTION 13, TOWNSHIP 18 SOUTH, RANGE 33 EAST, N.M.P.M.,
LEA COUNTY, NEW MEXICO.

MAP 5

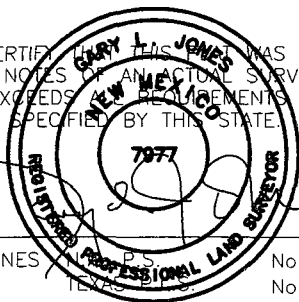


LEGAL DESCRIPTION

A STRIP OF LAND 30.0 FEET WIDE, LOCATED IN SECTION 13, TOWNSHIP 18 SOUTH, RANGE 33 EAST, N.M.P.M., LEA COUNTY, NEW MEXICO AND BEING 15.0 FEET LEFT AND RIGHT OF THE ABOVE PLATTED CENTERLINE SURVEY.

SECTION 13 = 373.0 FEET = 22.61 RODS = 0.07 MILES = 0.26 ACRES

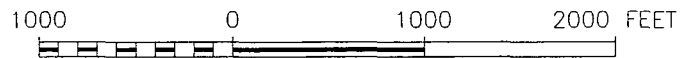
I HEREBY CERTIFY THAT THIS SURVEY WAS PREPARED FROM FIELD NOTES OF AN ACTUAL SURVEY AND MEETS OR EXCEEDS THE REQUIREMENTS FOR LAND SURVEYS AS SPECIFIED BY THIS STATE.



GARY L. JONES, P.S. No. 7977
LEA COUNTY, N.M. No. 5074

basin surveys
focused on excellence
in the oilfield

P.O. Box 1786 (575) 393-7316 - Office
1120 N. West County Rd. (575) 392-2206 - Fax
Hobbs, New Mexico 88241 basinsurveys.com



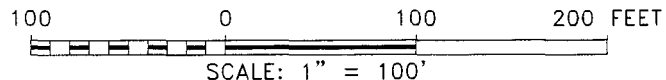
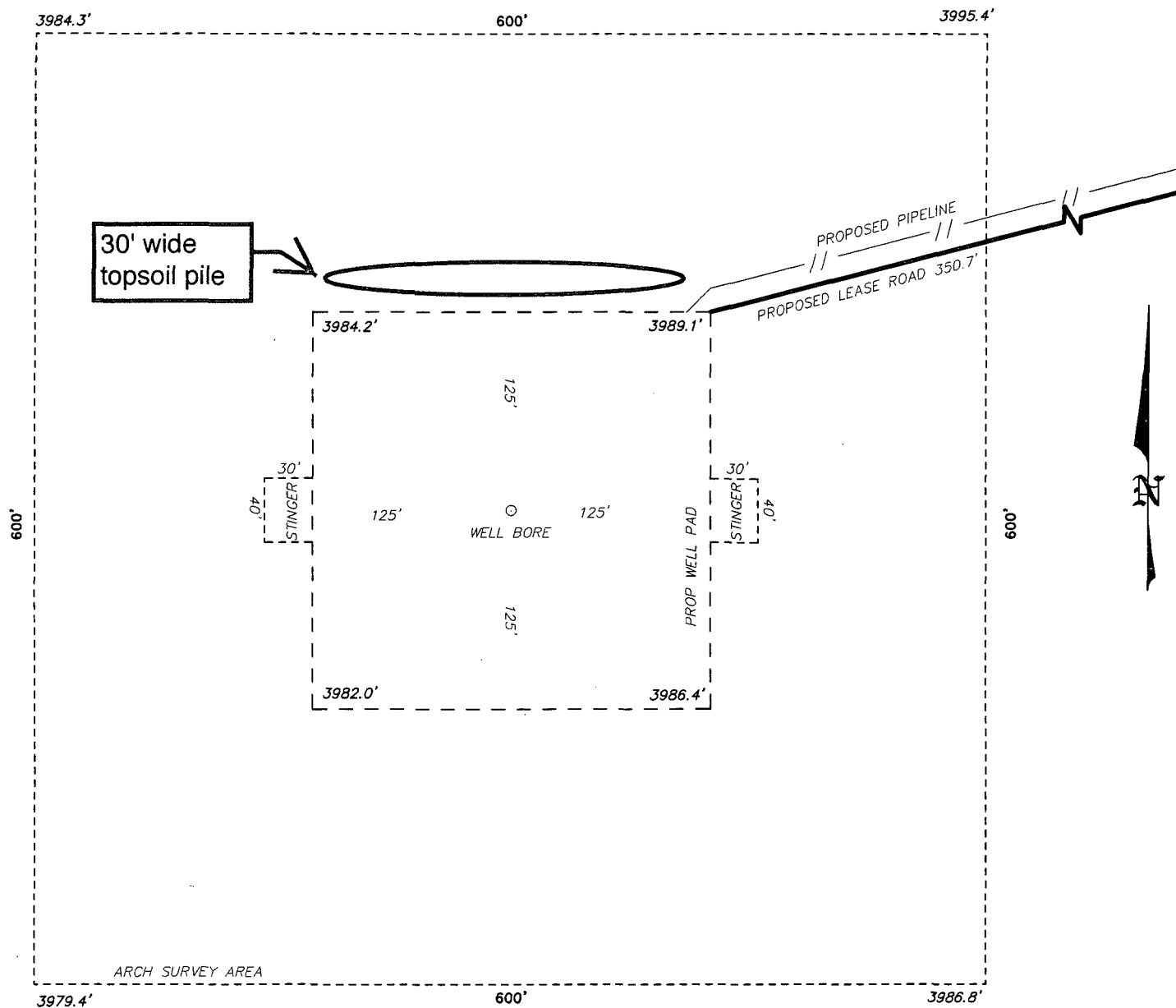
SEELY OIL COMPANY

REF: PROPOSED FLOW PIPELINE TO E-K QUEEN UNIT 211

A PIPELINE CROSSING USA LAND IN
SECTION 13, TOWNSHIP 18 SOUTH, RANGE 33 EAST,
N.M.P.M., LEA COUNTY, NEW MEXICO.

SECTION 13, TOWNSHIP 18 SOUTH, RANGE 33 EAST, N.M.P.M.,
LEA COUNTY, NEW MEXICO.

MAP 6



SEELY OIL COMPANY

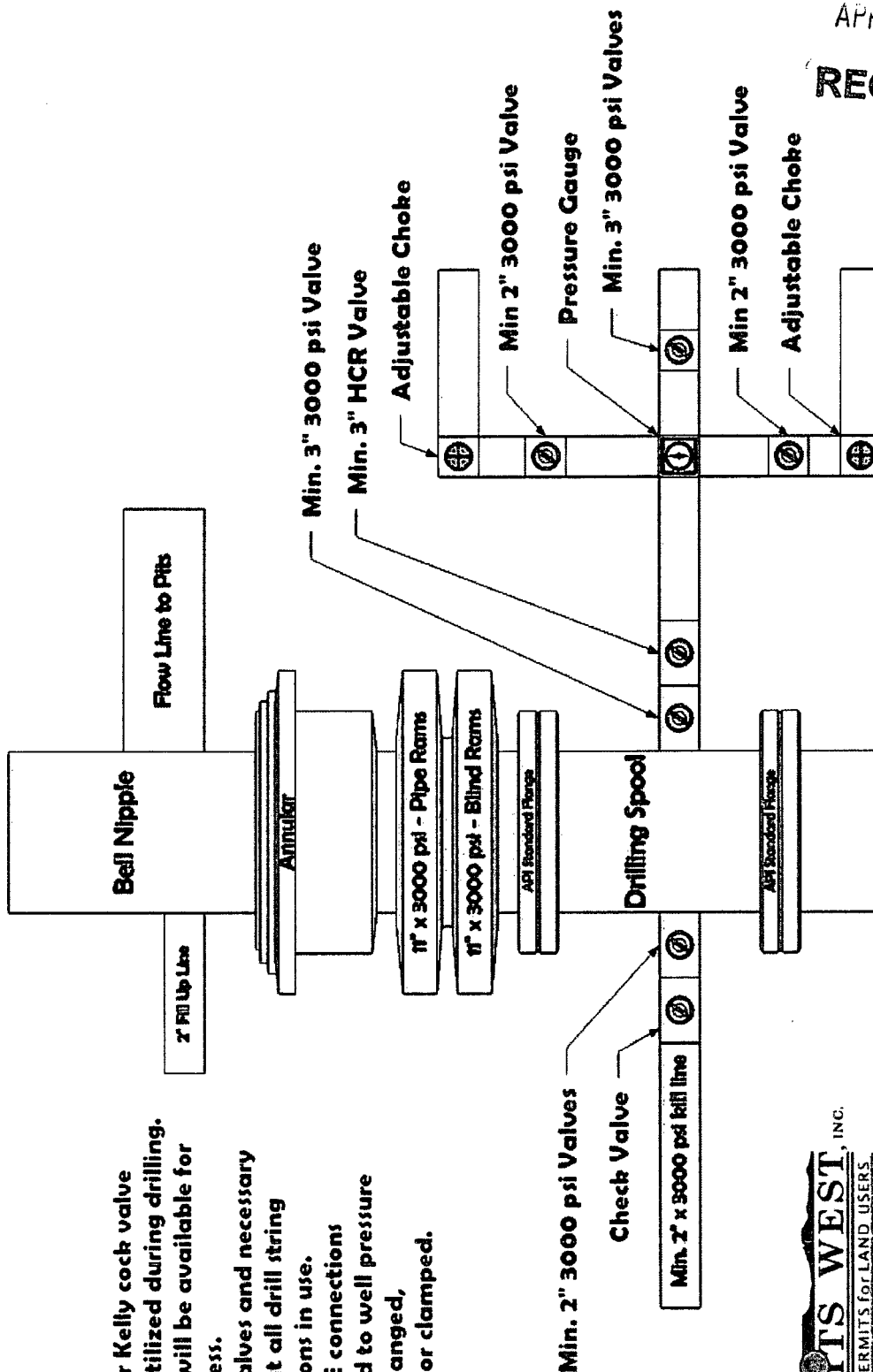
REF: E-K QUEEN UNIT 211 / WELL PAD TOPO

THE E-K QUEEN UNIT 211 LOCATED 1980' FROM
THE NORTH LINE AND 2296' FROM THE EAST LINE OF
SECTION 13, TOWNSHIP 18 SOUTH, RANGE 33 EAST,
N.M.P.M., LEA COUNTY, NEW MEXICO.

basin surveys
focused on excellence
in the oilfield

P.O. Box 1786 (575) 393-7316 - Office
1120 N. West County Rd. (575) 392-2206 - Fax
Hobbs, New Mexico 88241 basinsurveys.com

3M psi BOP Schematic



- Note:**
1. An upper Kelly cock valve will be utilized during drilling. Handle will be available for easy access.
 2. Safety valves and necessary subs to fit all drill string connections in use.
 3. All BOPE connections subjected to well pressure will be flanged, welded, or clamped.

PERMYTS WEST, INC.
 PROVIDING PERMITS FOR LAND USERS
 17 WILSON LODGE, SANTA FE, NEW MEXICO 87508
 (505) 426-8120

RECEIVED
 APR 27 2016