

District I
1625 N. French Dr., Hobbs, NM 88240
Phone: (575) 393-6161 Fax: (575) 393-0720
District II
811 S. First St., Artesia, NM 88210
Phone: (505) 748-1253 Fax: (505) 748-9720
District III
1000 Rio Drazos Road, Aztec, NM 87410
Phone: (505) 334-6178 Fax: (505) 334-6170
District IV
1220 S. St. Francis Dr., Santa Fe, NM 87505
Phone: (505) 476-3460 Fax: (505) 476-3462

State of New Mexico
Energy, Minerals & Natural Resources Department
OIL CONSERVATION DIVISION
1220 South St. Francis Dr.
Santa Fe, NM 87505

Form C-102
Revised August 1, 2011
Submit one copy to appropriate
District Office
☐ AMENDED REPORT

WELL LOCATION AND ACREAGE DEDICATION PLAT

¹ API Number 30-015-42902	² Pool Code 97597	³ Pool Name JABELINA, DELAWARE, SW
⁴ Property Code 315618	⁵ Property Name MUSTANG 33 FEDERAL	⁶ Well Number 2H
⁷ OGRID No. 270329	⁸ Operator Name ENDURANCE RESOURCES, LLC	⁹ Elevation 3200.3

¹⁰ Surface Location

UL or lot no.	Section	Township	Range	Lot Idn	Feet from the	North/South line	Feet from the	East/West line	County
N	33	25 S	35 E		150	SOUTH	1980	WEST	LEA

¹¹ Bottom Hole Location If Different From Surface

UL or lot no.	Section	Township	Range	Lot Idn	Feet from the	North/South line	Feet from the	East/West line	County
C	28	25 S	35 E		330	NORTH	1980	WEST	LEA

¹² Dedicated Acres 320	¹³ Joint or Infill	¹⁴ Consolidation Code	¹⁵ Order No.
---	-------------------------------	----------------------------------	-------------------------

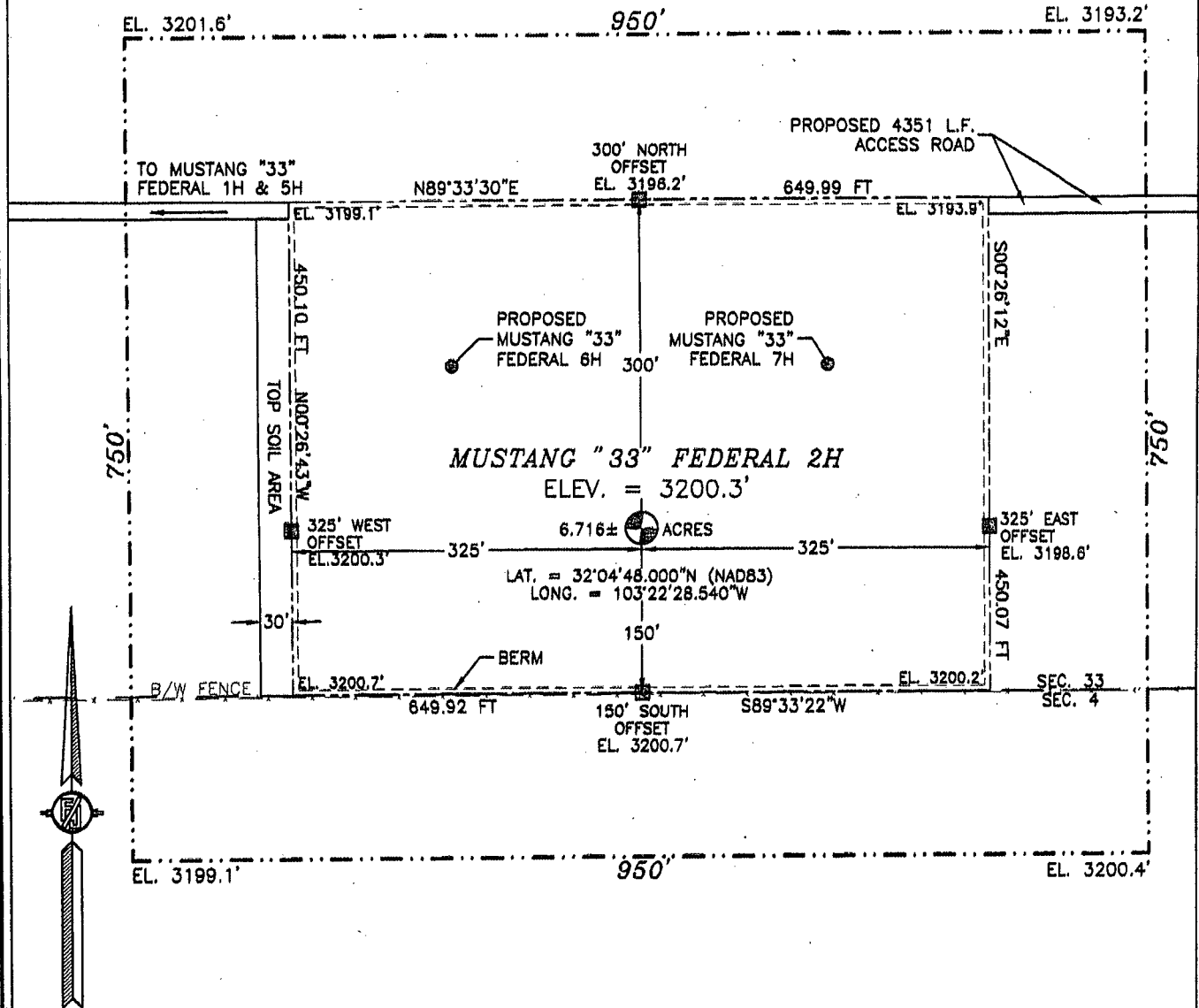
No allowable will be assigned to this completion until all interests have been consolidated or a non-standard unit has been approved by the division.

<p>NW CORNER SEC. 28 LAT. = 32°06'30.982"N LONG. = 103°22'51.654"W</p> <p>1980' BOTTOM OF HOLE 330' BOTTOM OF HOLE LAT. = 32°06'27.779"N LONG. = 103°22'28.641"W</p> <p>W/4 CORNER SEC. 28 LAT. = 32°06'04.863"N LONG. = 103°22'51.635"W</p> <p>SEC. 28</p> <p>NE CORNER SEC. 28 LAT. = 32°06'31.008"N LONG. = 103°21'50.215"W</p> <p>E/4 CORNER SEC. 28 LAT. = 32°06'04.924"N LONG. = 103°21'50.149"W</p> <p>NOTE: LATITUDE AND LONGITUDE COORDINATES ARE SHOWN USING THE NORTH AMERICAN DATUM OF 1983 (NAD83) IN DEGREES MINUTES DECIMAL SECONDS FORMAT. BASIS OF BEARING IS NEW MEXICO STATE PLANE EAST (NAD83) COORDINATES MODIFIED TO SURFACE.</p> <p>SECTION CORNER LAT. = 32°05'38.743"N LONG. = 103°22'51.809"W</p> <p>1/4 CORNER LAT. = 32°05'38.715"N LONG. = 103°22'20.892"W</p> <p>SEC. 33</p> <p>W/4 CORNER SEC. 33 LAT. = 32°05'12.633"N LONG. = 103°22'51.567"W</p> <p>MUSTANG "33" FEDERAL 2H ELEV. = 3200.3' LAT. = 32°04'48.000"N (NAD83) LONG. = 103°22'28.540"W</p> <p>SURFACE LOCATION 150' 1980'</p> <p>S/4 CORNER SEC. 33 LAT. = 32°04'48.508"N LONG. = 103°22'20.829"W</p> <p>SE CORNER SEC. 33 LAT. = 32°04'46.494"N LONG. = 103°21'50.124"W</p>	<p>" OPERATOR CERTIFICATION</p> <p>I hereby certify that the information contained herein is true and complete to the best of my knowledge and belief, and that this organization either owns a working interest or undivided mineral interest in the land including the proposed bottom hole location or has a right to drill this well at this location pursuant to a contract with an owner of such a mineral or working interest, or to a voluntary pooling agreement or a compulsory pooling order heretofore entered by the court.</p> <p><i>Tinlee Tilton</i> 1/25/2016 Signature Date Tinlee Tilton Printed Name tinlee@endurance E-mail Address VLSOURCESLLC.COM</p> <p>"SURVEYOR CERTIFICATION</p> <p>I hereby certify that the well location shown on this plat was plotted from field notes of actual surveys made by me or under my supervision, and that the same is true and correct to the best of my belief.</p> <p>WILLIAM F. JARAMILLO JANUARY 19, 2016 Date of Survey 12797 Signature and Seal of Professional Surveyor Certificate Number WILLIAM F. JARAMILLO, PLS 12797 SURVEY NO. 3264A</p>
---	---

MAY 06 2016

SECTION 33, TOWNSHIP 25 SOUTH, RANGE 35 EAST, N.M.P.M.
LEA COUNTY, STATE OF NEW MEXICO
SITE MAP

NOTE: LATITUDE AND LONGITUDE COORDINATES ARE SHOWN USING THE NORTH AMERICAN DATUM OF 1983 (NAD83) IN DEGREES, MINUTES AND DECIMAL SECONDS FORMAT. BASIS OF BEARING IS NEW MEXICO STATE PLANE EAST (NAD83) COORDINATES MODIFIED TO SURFACE.



015 75 150 300

SCALE 1" = 150'

DIRECTIONS TO LOCATION

FROM STATE HWY. 128 AND CR. #2 (BATTLE AXE), GO EAST ON STATE HWY. 128 0.2 MILES, TURN RIGHT ON CALICHE ROAD AND GO SOUTH 4.2 MILES, TURN LEFT AND GO SOUTHEAST 1.2 MILES, BEND RIGHT AND GO SOUTH 0.7 MILES, TURN LEFT AND GO EAST 2.3 MILES, TURN RIGHT AND GO SOUTH 1.75 MILES, TO A PROPOSED ROAD SURVEY AND FOLLOW FLAGS WEST 4351' TO THE PROPOSED NORTHEAST CORNER OF PAD FOR THIS LOCATION.

ENDURANCE RESOURCES, LLC
MUSTANG "33" FEDERAL 2H
LOCATED 150 FT. FROM THE SOUTH LINE
AND 1980 FT. FROM THE WEST LINE OF
SECTION 33, TOWNSHIP 25 SOUTH,
RANGE 35 EAST, N.M.P.M.
LEA COUNTY, STATE OF NEW MEXICO

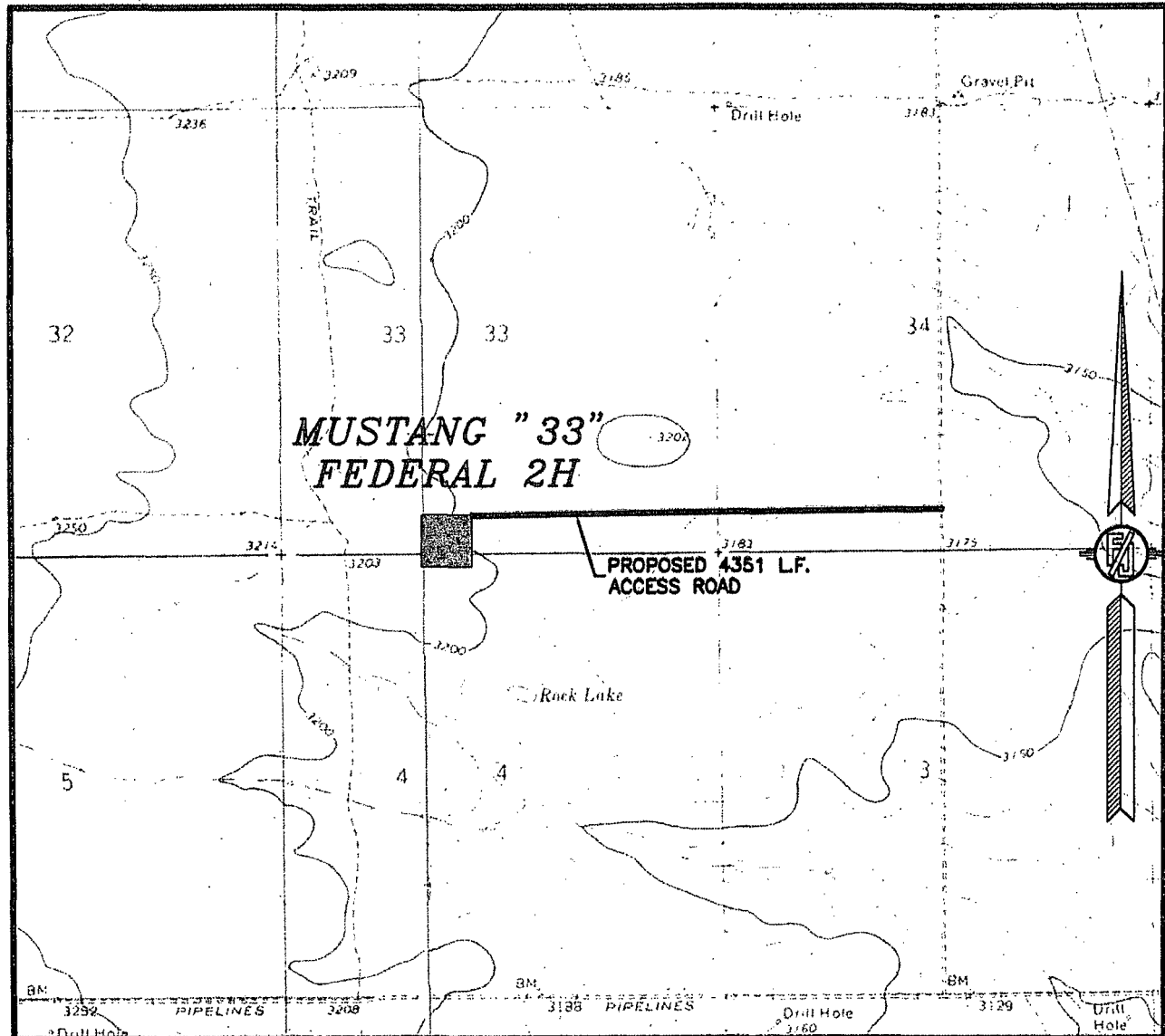
JANUARY 19, 2015

SURVEY NO. 3264A

MADRON SURVEYING, INC. 301 SOUTH CANAL
(575) 234-3341

CARLSBAD, NEW MEXICO

SECTION 33, TOWNSHIP 25 SOUTH, RANGE 35 EAST, N.M.P.M.
LEA COUNTY, STATE OF NEW MEXICO
LOCATION VERIFICATION MAP



USGS QUAD MAP:
JAVELINA BASIN
ANDREWS PLACE

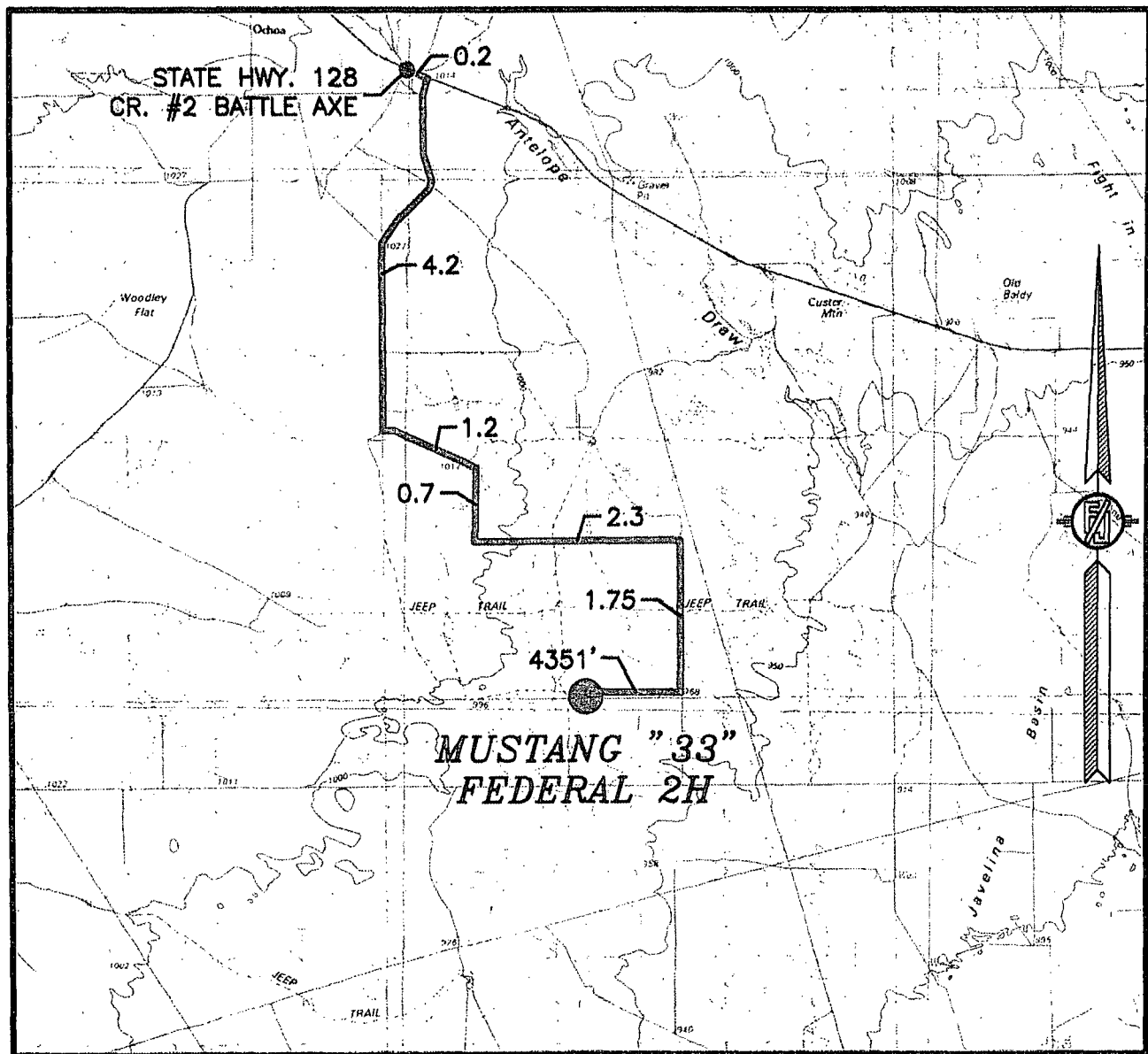
NOT TO SCALE

ENDURANCE RESOURCES, LLC
MUSTANG "33" FEDERAL 2H
LOCATED 150 FT. FROM THE SOUTH LINE
AND 1980 FT. FROM THE WEST LINE OF
SECTION 33, TOWNSHIP 25 SOUTH,
RANGE 35 EAST, N.M.P.M.
LEA COUNTY, STATE OF NEW MEXICO

JANUARY 19, 2015

MADRON SURVEYING, INC. 301 SOUTH CANAL (575) 234-3341 CARLSBAD, NEW MEXICO
SURVEY NO. 3264A

SECTION 33, TOWNSHIP 25 SOUTH, RANGE 35 EAST, N.M.P.M.
LEA COUNTY, STATE OF NEW MEXICO
VICINITY MAP



DISTANCES IN MILES

NOT TO SCALE

DIRECTIONS TO LOCATION

FROM STATE HWY. 128 AND CR. #2 (BATTLE AXE), GO EAST ON STATE HWY. 128 0.2 MILES, TURN RIGHT ON CALICHE ROAD AND GO SOUTH 4.2 MILES, TURN LEFT AND GO SOUTHEAST 1.2 MILES, BEND RIGHT AND GO SOUTH 0.7 MILES, TURN LEFT AND GO EAST 2.3 MILES, TURN RIGHT AND GO SOUTH 1.75 MILES, TO A PROPOSED ROAD SURVEY AND FOLLOW FLAGS WEST 4351' TO THE PROPOSED NORTHEAST CORNER OF PAD FOR THIS LOCATION.

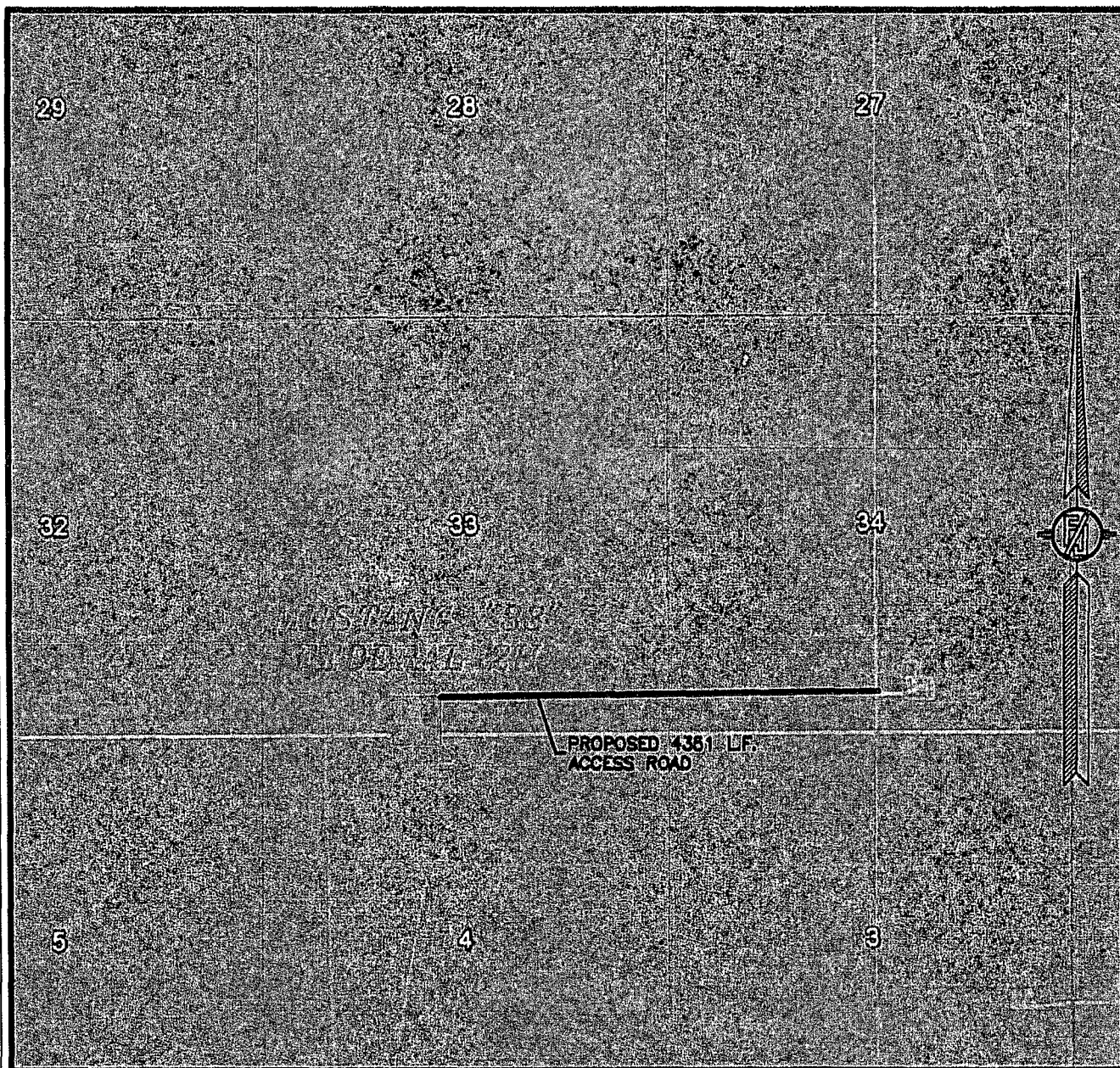
ENDURANCE RESOURCES, LLC
MUSTANG "33" FEDERAL 2H
LOCATED 150 FT. FROM THE SOUTH LINE
AND 1980 FT. FROM THE WEST LINE OF
SECTION 33, TOWNSHIP 25 SOUTH,
RANGE 35 EAST, N.M.P.M.
LEA COUNTY, STATE OF NEW MEXICO

JANUARY 19, 2015

SURVEY NO. 3264A

MADRON SURVEYING, INC. 301 SOUTH CANAL (575) 234-3341 CARLSBAD, NEW MEXICO

SECTION 33, TOWNSHIP 25 SOUTH, RANGE 35 EAST, N.M.P.M.
LEA COUNTY, STATE OF NEW MEXICO
AERIAL PHOTO



NOT TO SCALE
AERIAL PHOTO:
GOOGLE EARTH
APR. 2013

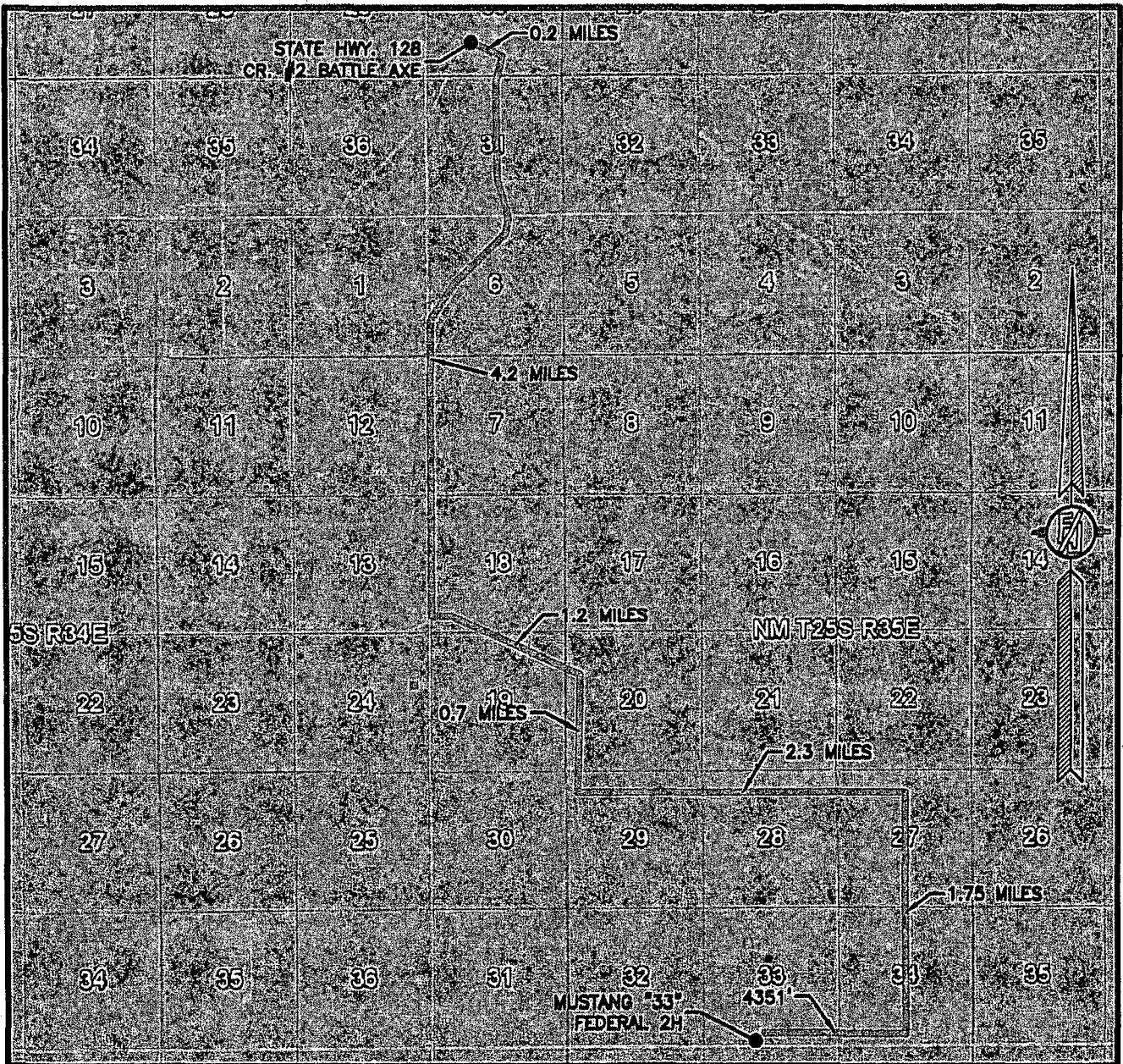
ENDURANCE RESOURCES, LLC
MUSTANG "33" FEDERAL 2H
LOCATED 150 FT. FROM THE SOUTH LINE
AND 1980 FT. FROM THE WEST LINE OF
SECTION 33, TOWNSHIP 25 SOUTH,
RANGE 35 EAST, N.M.P.M.
LEA COUNTY, STATE OF NEW MEXICO

JANUARY 19, 2015

SURVEY NO. 3264A

MADRON SURVEYING, INC. 301 SOUTH CANAL (575) 234-3341 CARLSBAD, NEW MEXICO

SECTION 33, TOWNSHIP 25 SOUTH, RANGE 35 EAST, N.M.P.M.
LEA COUNTY, STATE OF NEW MEXICO
AERIAL ACCESS ROUTE MAP



NOT TO SCALE
AERIAL PHOTO:
GOOGLE EARTH
APR. 2013

ENDURANCE RESOURCES, LLC
MUSTANG "33" FEDERAL 2H
LOCATED 150 FT. FROM THE SOUTH LINE
AND 1980 FT. FROM THE WEST LINE OF
SECTION 33, TOWNSHIP 25 SOUTH,
RANGE 35 EAST, N.M.P.M.
LEA COUNTY, STATE OF NEW MEXICO

JANUARY 19, 2015

SURVEY NO. 3264A

MADRON SURVEYING, INC. 301 SOUTH CANAL (575) 234-3341 CARLSBAD, NEW MEXICO

TOP OF ROTARY TABLE

ROTARY BEAM

TOP OF ROTARY TABLE

F/ GROUND LEVEL

12.5

5.7

1.3

1.3

14.16 Top-Btm

4.1

4.1

28.6 RKB

19.7

21.7

26.3

13 5/8" 5M HYDRIL

BX 160

13 5/8" 10M CAMRON DBL

5.5

2 1/16 10M CHECK VALVE

2 1/16 10 MANUAL VALVES

1.10

13 5/8" 10 M MUD CROSS

4 1/16 10,000 MAN VALVE

4 1/16 10,000 HCR VALVE

4.7

13 5/8" 10M CAMRON TYPE U

3.5

28.6

TOP MATTING BOARD GROUND LEVEL

32.6

4.1

BX 158

13 5/8 3M

