

HOBBS OCD

District I
1625 N. French Dr., Hobbs, NM 88240
Phone: (575) 393-6161 Fax: (575) 393-0720
District II
511 S. First St., Artesia, NM 88210
Phone: (575) 748-1283 Fax: (575) 748-9720
District III
1000 Rio Brazos Road, Aztec, NM 87410
Phone: (505) 334-6178 Fax: (505) 334-6170
District IV
1220 S. St. Francis Dr., Santa Fe, NM 87505
Phone: (505) 476-3460 Fax: (505) 476-3462

State of New Mexico
Energy, Minerals & Natural Resources Department
OIL CONSERVATION DIVISION
1220 South St. Francis Dr.
Santa Fe, NM 87505

JUL 06 2016

RECEIVED

Form C-102
Revised August 1, 2011
Submit one copy to appropriate
District Office

☐ AMENDED REPORT

WELL LOCATION AND ACREAGE DEDICATION PLAT

¹ API Number 30-025-43356	² Pool Code 97597	³ Pool Name Jabalina, Delaware, Southwest
⁴ Property Code 309499	⁵ Property Name MADERA 24 FEDERAL	
⁶ OGRID No. 281085	⁷ Operator Name RMR OPERATING, LLC	⁸ Well Number 5H
		⁹ Elevation 3213.9

¹⁰ Surface Location

UL or lot no.	Section	Township	Range	Lot Idn	Feet from the	North/South line	Feet from the	East/West line	County
M	24	26 S	34 E		25	SOUTH	660	WEST	LEA

¹¹ Bottom Hole Location If Different From Surface

UL or lot no.	Section	Township	Range	Lot Idn	Feet from the	North/South line	Feet from the	East/West line	County
D	24	26 S	34 E		330	NORTH	660	WEST	LEA

¹² Dedicated Acres	¹³ Joint or Infill	¹⁴ Consolidation Code	¹⁵ Order No.

No allowable will be assigned to this completion until all interests have been consolidated or a non-standard unit has been approved by the division.

<p>" OPERATOR CERTIFICATION</p> <p>I hereby certify that the information contained herein is true and complete to the best of my knowledge and belief, and that this organization either owns a working interest or unleased mineral interest in the land including the proposed bottom hole location or has a right to drill this well at this location pursuant to a contract with an owner of such a mineral or working interest, or to a voluntary pooling agreement or a compulsory pooling order heretofore entered by the division.</p> <p>Signature _____ Date _____</p> <p>Ross Pearson Printed Name</p> <p>rosseredmountainresources.com E-mail Address</p>	
<p>"SURVEYOR CERTIFICATION</p> <p>I hereby certify that the well location shown on this plat was plotted from field notes of actual surveys made by me or under my supervision, and that the same is true and correct to the best of my belief.</p> <p>JULY 7, 2015 Date of Survey</p> <p>FLIMON P. JARAMILLO Signature and Seal of Professional Surveyor</p> <p>FLIMON P. JARAMILLO, PLS 12797 Certificate Number</p> <p>SURVEY NO. 3481C</p>	

WELL LOCATION AND ACREAGE DEDICATION PLAT

N 89° 42' 15" E 2639.76 FT

N 89° 42' 15" E 2639.76 FT

660' 330' BOTTOM OF HOLE

NW CORNER SEC. 24
LAT. = 32.0360102°N
LONG. = 103.4316971°W

NE CORNER SEC. 24
LAT. = 32.0359627°N
LONG. = 103.4146638°W

W/4 CORNER SEC. 24
SCALED

E/4 CORNER SEC. 24
SCALED

NOTE: LATITUDE AND LONGITUDE COORDINATES ARE SHOWN USING THE NORTH AMERICAN DATUM OF 1927 (NAD27) IN DECIMAL DEGREE FORMAT.

SW CORNER SEC. 24
LAT. = 32.0214839°N
LONG. = 103.4316916°W

MADERA "24" FEDERAL 5H
ELEV. = 3213.9'
LAT. = 32.0215485°N (NAD27)
LONG. = 103.4295624°W

S/4 CORNER SEC. 24
LAT. = 32.0214668°N
LONG. = 103.4231685°W

SE CORNER SEC. 24
LAT. = 32.0214443°N
LONG. = 103.4146587°W

25' SURFACE LOCATION

660' 25' 660'

N 00° 29' 58" W 2642.74 FT

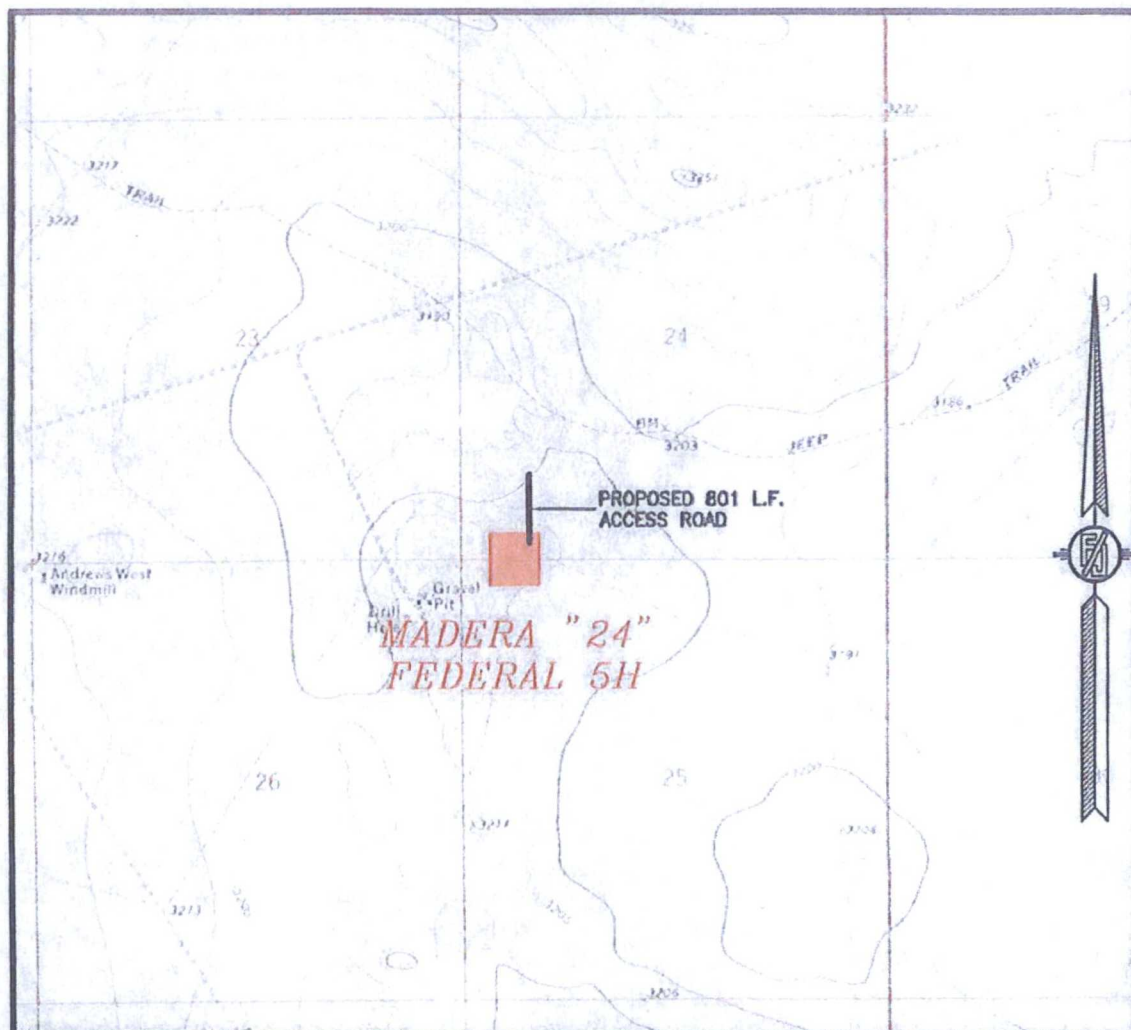
S 89° 39' 15" W 2642.15 FT

S 89° 41' 30" W 2638.06 FT

S 00° 30' 25" E 2641.31 FT

S 00° 30' 25" E 2641.31 FT

SECTION 24, TOWNSHIP 26 SOUTH, RANGE 34 EAST, N.M.P.M.
LEA COUNTY, STATE OF NEW MEXICO
LOCATION VERIFICATION MAP



USGS QUAD MAP:
ANDREWS PLACE

NOT TO SCALE

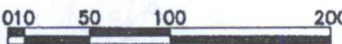
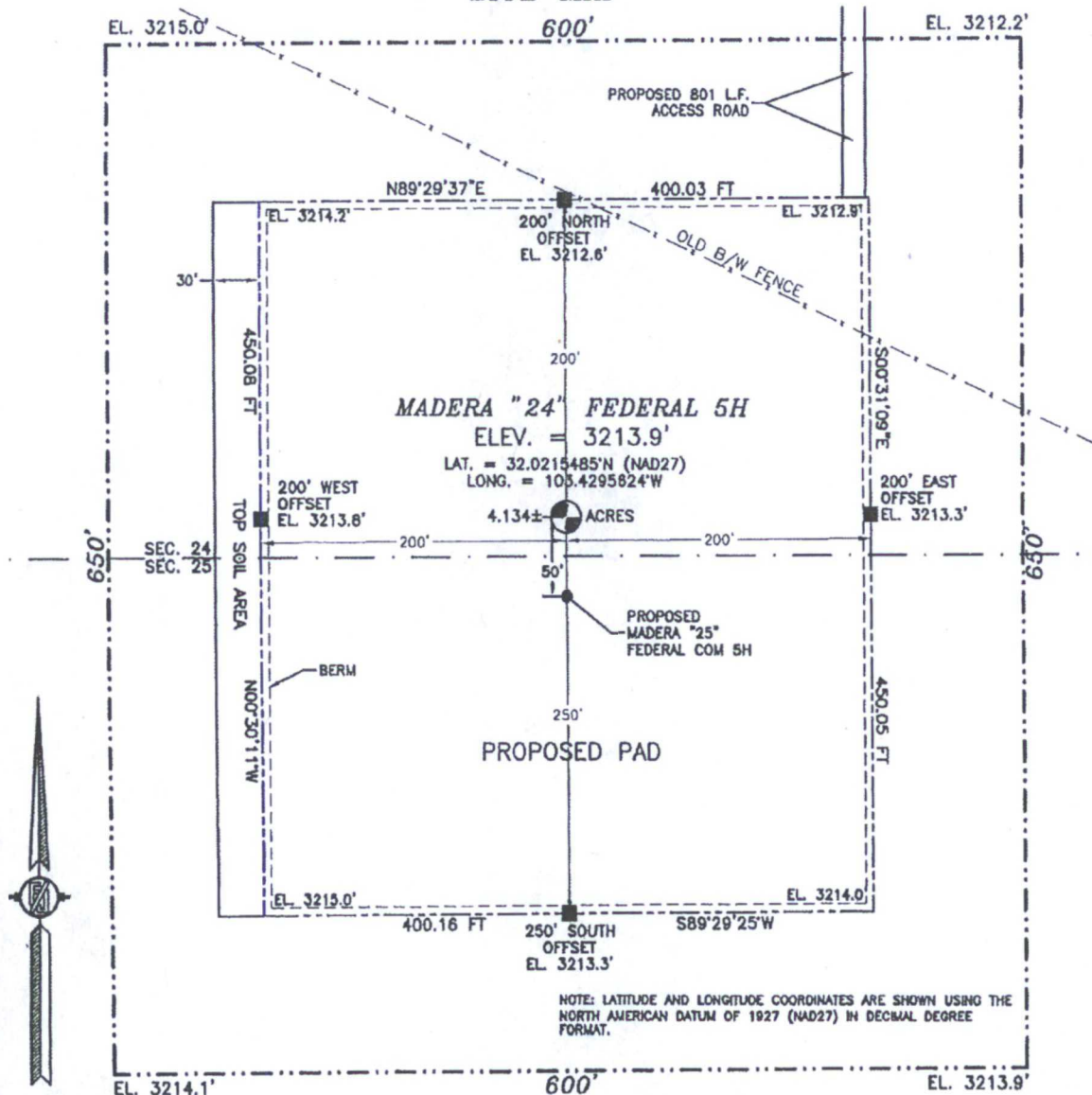
RMR OPERATING, LLC
MADERA "24" FEDERAL 5H
LOCATED 25 FT. FROM THE SOUTH LINE
AND 660 FT. FROM THE WEST LINE OF
SECTION 24, TOWNSHIP 26 SOUTH,
RANGE 34 EAST, N.M.P.M.
LEA COUNTY, STATE OF NEW MEXICO

JULY 7, 2015

MADRON SURVEYING, INC. 301 SOUTH CANAL (575) 234-3341 CARLSBAD, NEW MEXICO SURVEY NO. 3481C

Exhibit "A"

SECTION 24, TOWNSHIP 26 SOUTH, RANGE 34 EAST, N.M.P.M.
LEA COUNTY, STATE OF NEW MEXICO
SITE MAP



DIRECTIONS TO LOCATION
IN JAL NM, FROM STATE HWY. 128 AND STATE ROAD 208, GO SOUTH ON 208 6.2 MILES, TURN RIGHT ON CALICHE ROAD (BECKHAM RD.) AND GO WEST 5.5 MILES, TURN RIGHT AND GO NORTHWEST 3.0 MILES, BEND LEFT AND GO SOUTHWEST 2.08 MILES TO A PROPOSED ROAD SURVEY, FOLLOW PROPOSED ROAD SURVEY FLAGS SOUTH 801' TO THE PROPOSED NORTHEAST PAD CORNER FOR THIS LOCATION.

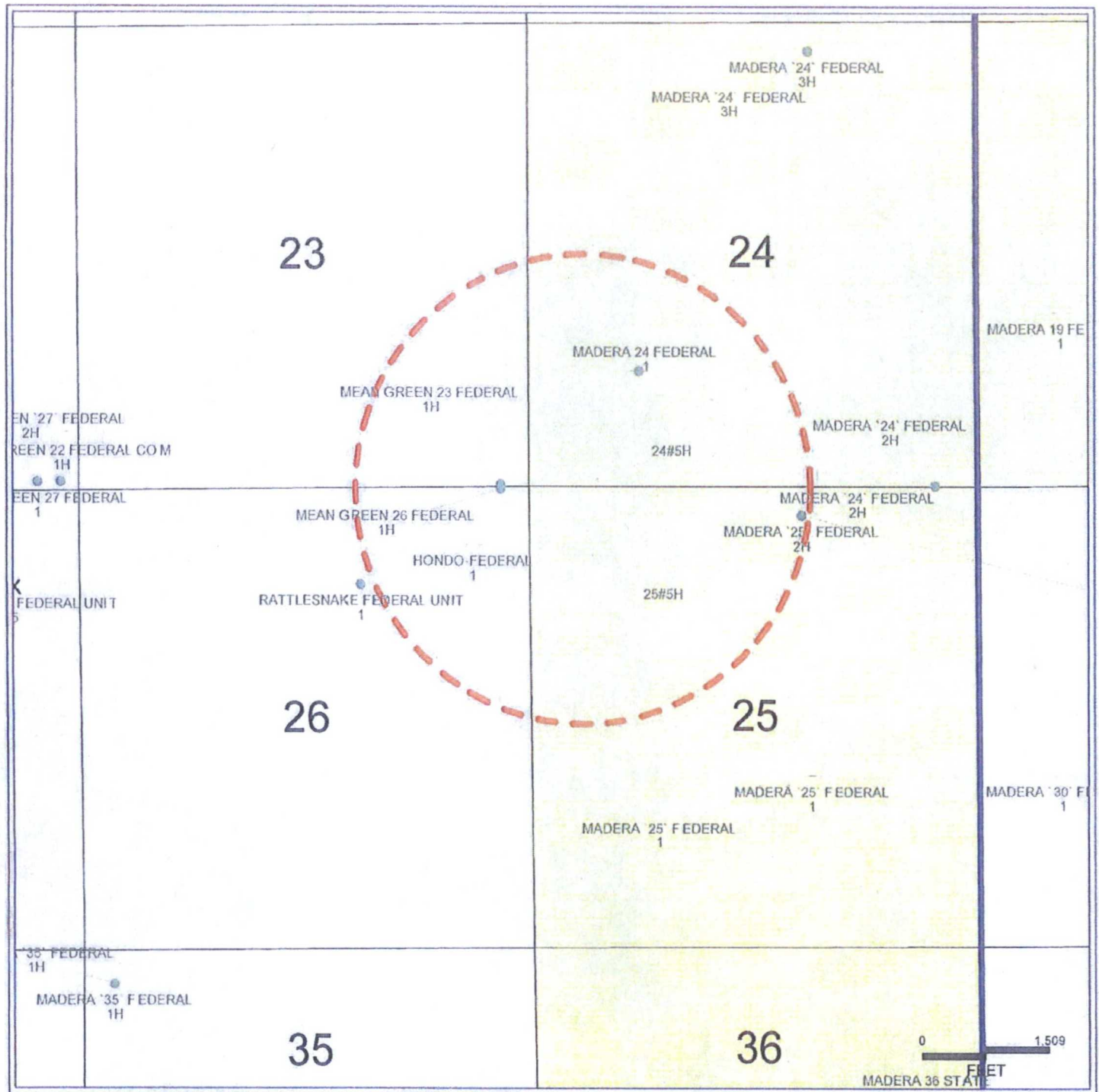
RMR OPERATING, LLC
MADERA "24" FEDERAL 5H
LOCATED 25 FT. FROM THE SOUTH LINE
AND 660 FT. FROM THE WEST LINE OF
SECTION 24, TOWNSHIP 26 SOUTH,
RANGE 34 EAST, N.M.P.M.
LEA COUNTY, STATE OF NEW MEXICO

JULY 7, 2015

SURVEY NO. 8481C

MADRON SURVEYING, INC. 301 SOUTH CANAL CARLSBAD, NEW MEXICO
(575) 234-3341

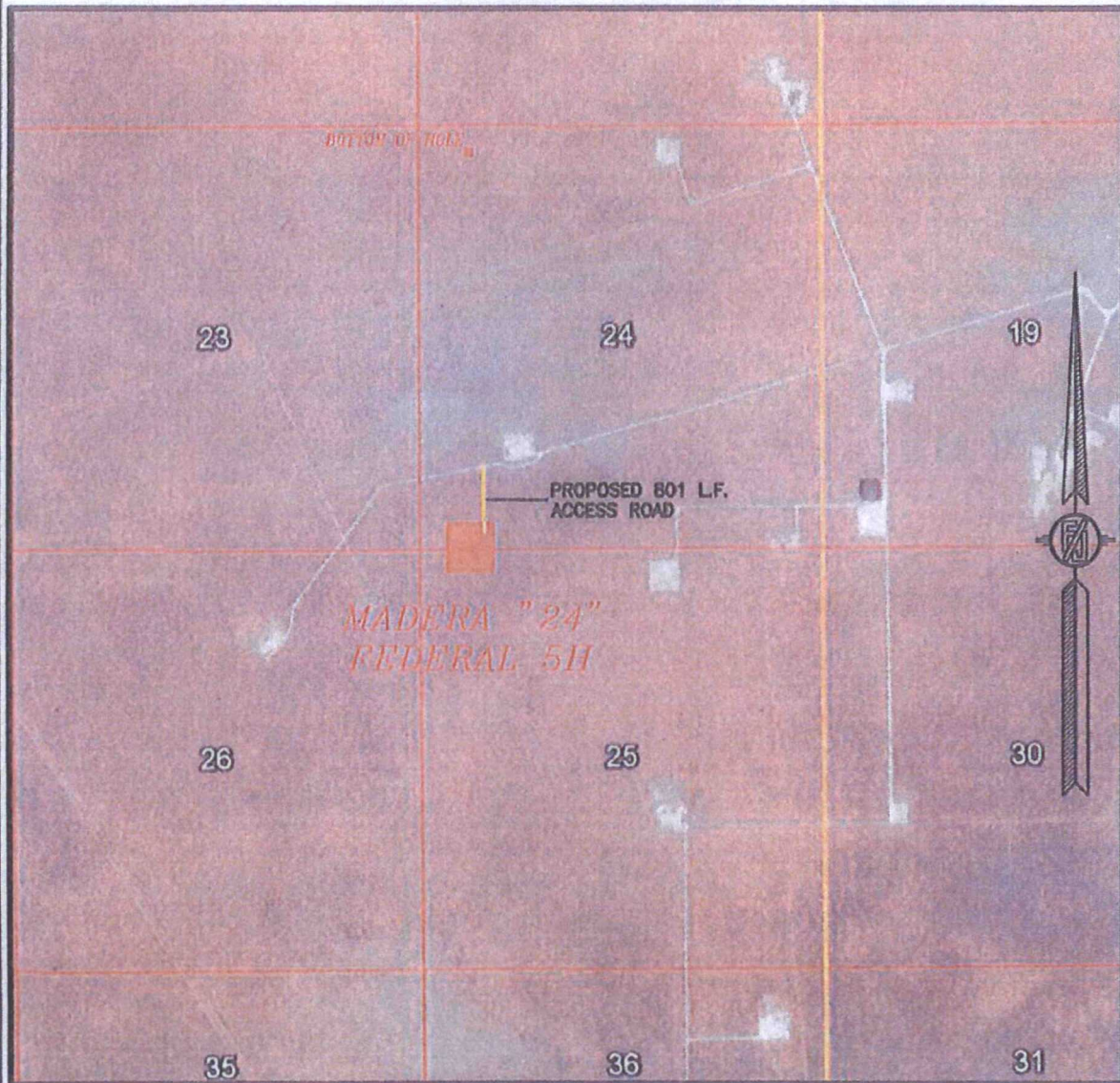
Exhibit "B"



PETRA 6/17/2015 4:17:15 PM

Exhibit "C"

SECTION 24, TOWNSHIP 26 SOUTH, RANGE 34 EAST, N.M.P.M.
LEA COUNTY, STATE OF NEW MEXICO
AERIAL PHOTO



NOT TO SCALE
AERIAL PHOTO:
GOOGLE EARTH
APR. 2013

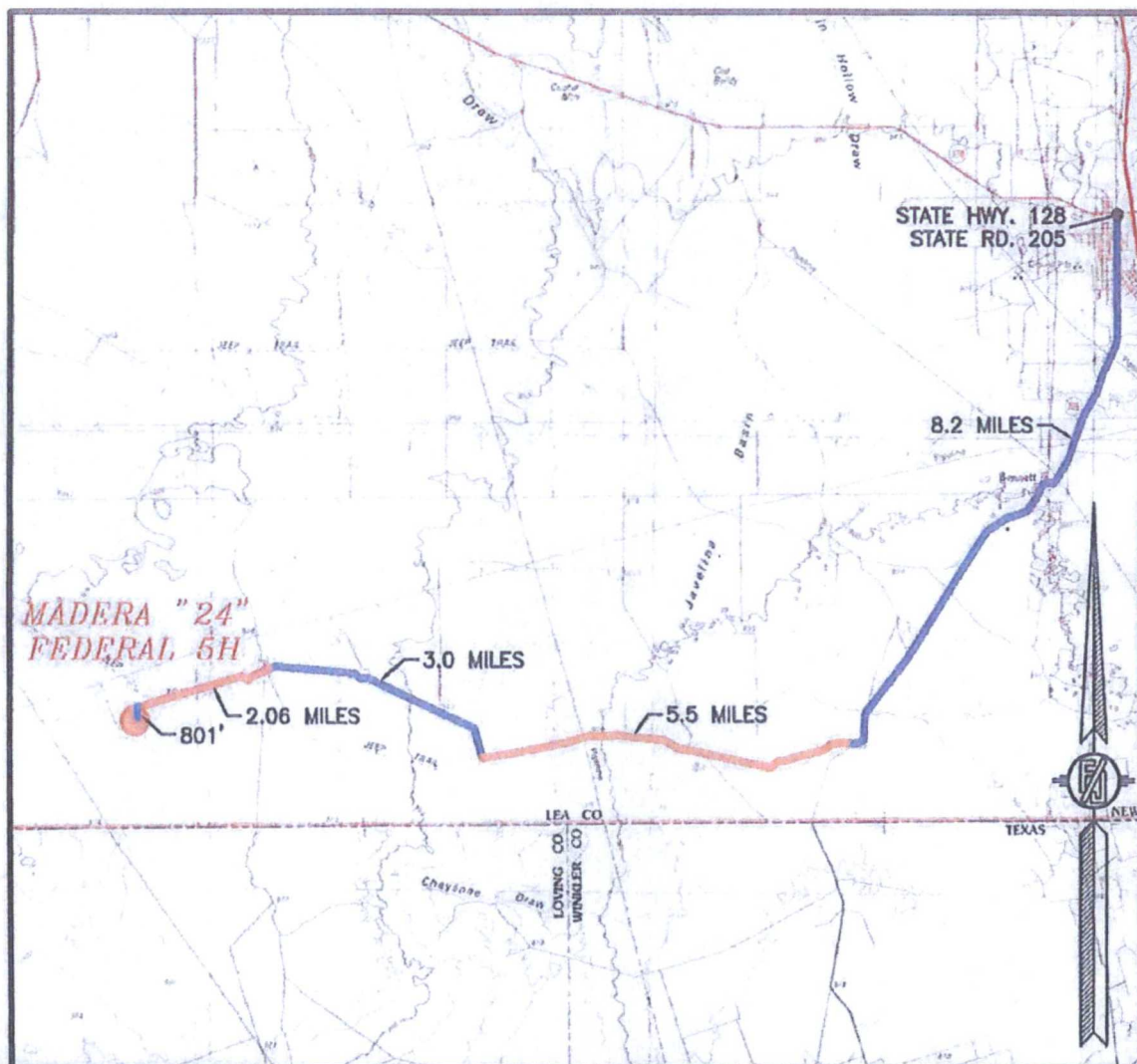
RMR OPERATING, LLC
MADERA "24" FEDERAL 5H
LOCATED 25 FT. FROM THE SOUTH LINE
AND 660 FT. FROM THE WEST LINE OF
SECTION 24, TOWNSHIP 26 SOUTH,
RANGE 34 EAST, N.M.P.M.
LEA COUNTY, STATE OF NEW MEXICO

JULY 7, 2015

SURVEY NO. 3481C

MADRON SURVEYING, INC. 301 SOUTH CAVAL (575) 234-3341 CARLSBAD, NEW MEXICO

SECTION 24, TOWNSHIP 26 SOUTH, RANGE 34 EAST, N.M.P.M.
LEA COUNTY, STATE OF NEW MEXICO
VICINITY MAP



DISTANCES IN MILES

NOT TO SCALE

DIRECTIONS TO LOCATION

IN JAL NM, FROM STATE HWY. 128 AND STATE ROAD 205, GO SOUTH ON 205 8.2 MILES, TURN RIGHT ON CALICHE ROAD (BECKHAM RD.) AND GO WEST 5.5 MILES, TURN RIGHT AND GO NORTHWEST 3.0 MILES, BEND LEFT AND GO SOUTHWEST 2.06 MILES TO A PROPOSED ROAD SURVEY, FOLLOW PROPOSED ROAD SURVEY FLAGS SOUTH 801' TO THE PROPOSED NORTHEAST PAD CORNER FOR THIS LOCATION.

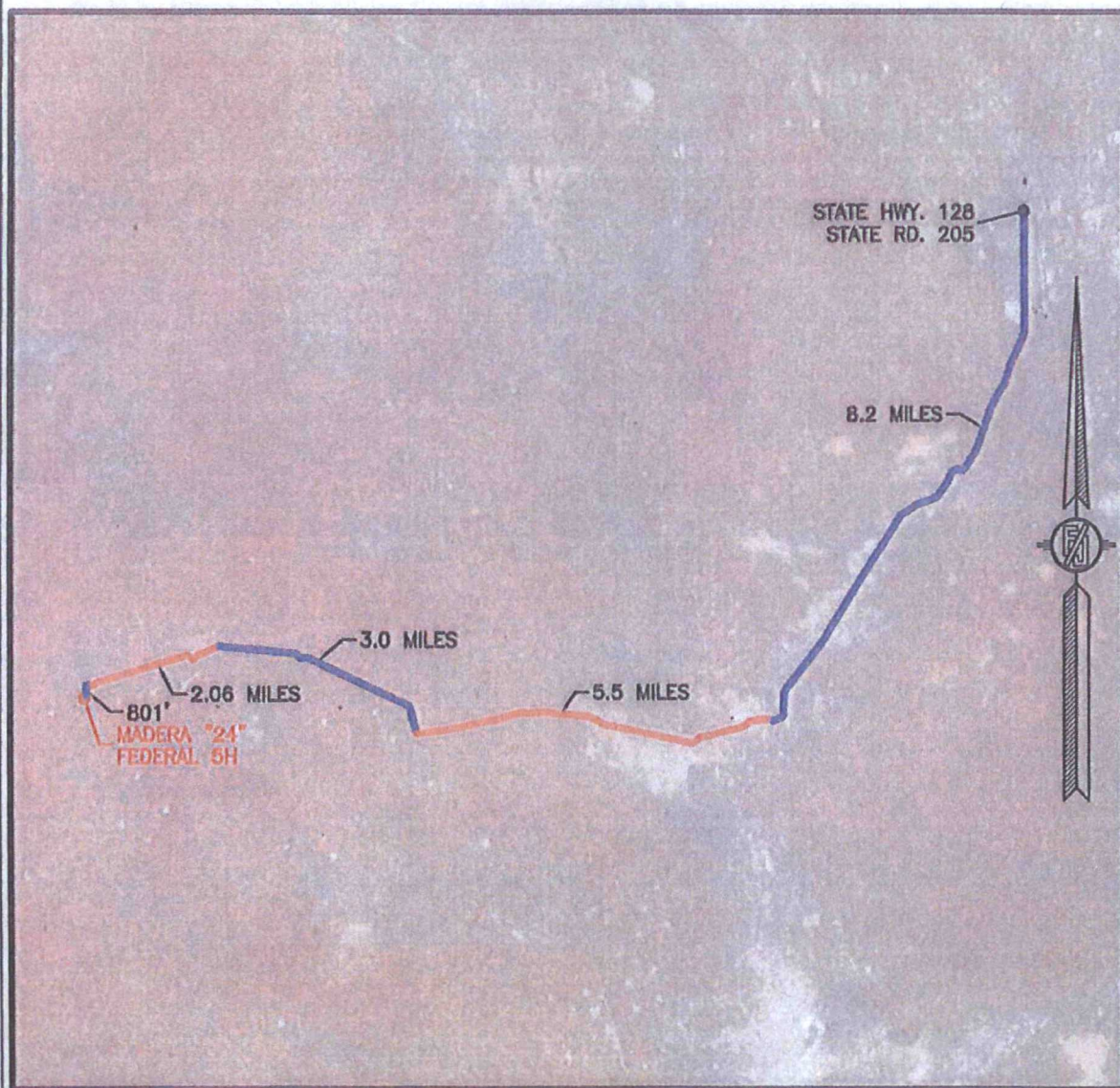
RMR OPERATING, LLC
MADERA "24" FEDERAL 5H
LOCATED 25 FT. FROM THE SOUTH LINE
AND 660 FT. FROM THE WEST LINE OF
SECTION 24, TOWNSHIP 26 SOUTH,
RANGE 34 EAST, N.M.P.M.
LEA COUNTY, STATE OF NEW MEXICO

JULY 7, 2015

MADRON SURVEYING, INC. 301 SOUTH CANAL (575) 234-3341

SURVEY NO. 3481C
CARLSBAD, NEW MEXICO

SECTION 24, TOWNSHIP 26 SOUTH, RANGE 34 EAST, N.M.P.M.
LEA COUNTY, STATE OF NEW MEXICO
AERIAL ACCESS ROUTE MAP



NOT TO SCALE
AERIAL PHOTO:
GOOGLE EARTH
APR. 2013

RMR OPERATING, LLC
MADERA "24" FEDERAL 5H
LOCATED 25 FT. FROM THE SOUTH LINE
AND 660 FT. FROM THE WEST LINE OF
SECTION 24, TOWNSHIP 26 SOUTH,
RANGE 34 EAST, N.M.P.M.
LEA COUNTY, STATE OF NEW MEXICO

JULY 7, 2015

SURVEY NO. 3481C

MADRON SURVEYING, INC. 301 SOUTH CANAL (575) 234-3341 CARLSBAD, NEW MEXICO