

DISTRICT I
1625 N. French Dr., Hobbs, NM 88240
Phone: (575) 393-6161 Fax: (575) 393-0720
DISTRICT II
811 S. First St., Artesia, NM 88210
Phone: (575) 748-1283 Fax: (575) 748-9720
DISTRICT III
1000 Rio Brazos Road, Aztec, NM 87410
Phone: (505) 334-6178 Fax: (505) 334-6170
DISTRICT IV
1220 S. St. Francis Dr., Santa Fe, NM 87505
Phone: (505) 476-3460 Fax: (505) 476-3462

State of New Mexico
Energy, Minerals & Natural Resources Department
OIL CONSERVATION DIVISION
1220 South St. Francis Dr.
Santa Fe, New Mexico 87505

HOBBS OCD
JUL 11 2016
RECEIVED

Form C-102
Revised August 1, 2011
Submit one copy to appropriate
District Office

□ AMENDED REPORT

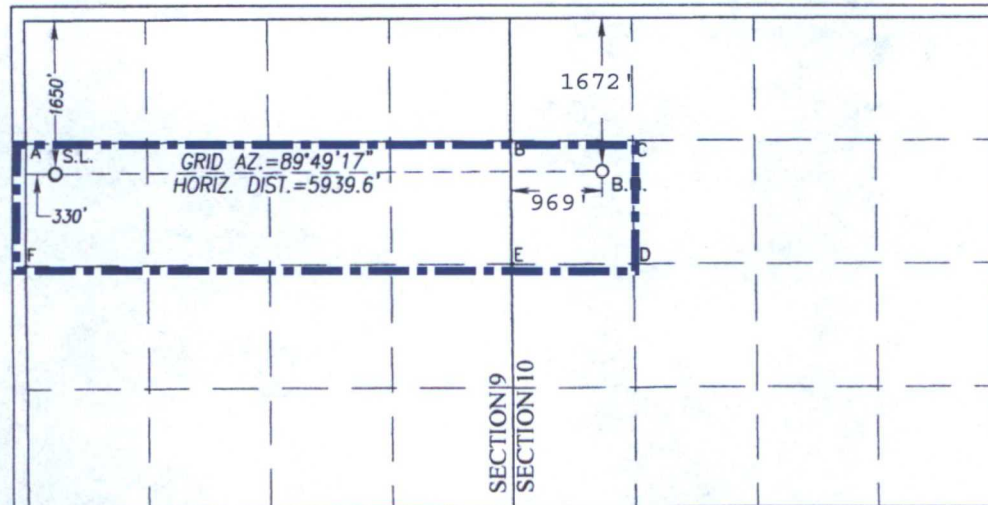
WELL LOCATION AND ACREAGE DEDICATION PLAT

API Number 30-025-41410	Pool Code 44500	Pool Name Maljamar; Yeso, West
Property Code 40134	Property Name SNEED 9 FEDERAL COM	Well Number 23H
OGRID No. 229137	Operator Name COG OPERATING, LLC	Elevation 4080'

Surface Location									
UL or lot No. E	Section 9	Township 17-S	Range 32-E	Lot Idn	Feet from the 1650	North/South line NORTH	Feet from the 330	East/West line WEST	County LEA

Bottom Hole Location If Different From Surface									
UL or lot No. E	Section 10	Township 17-S	Range 32-E	Lot Idn	Feet from the 1672	North/South line NORTH	Feet from the 969	East/West line WEST	County LEA
Dedicated Acres 200	Joint or Infill	Consolidation Code	Order No.						

NO ALLOWABLE WILL BE ASSIGNED TO THIS COMPLETION UNTIL ALL INTERESTS HAVE BEEN CONSOLIDATED OR A NON-STANDARD UNIT HAS BEEN APPROVED BY THE DIVISION



OPERATOR CERTIFICATION

I hereby certify that the information herein is true and complete to the best of my knowledge and belief, and that this organization either owns a working interest or unleased mineral interest in the land including the proposed bottom hole location or has a right to drill this well at this location pursuant to a contract with an owner of such mineral or working interest, or to a voluntary pooling agreement or a compulsory pooling order heretofore entered by the division.

K C 7/9/16
Signature Date
Kanicia Castillo
Printed Name
kcastillo@concho.com
E-mail Address

SURVEYOR CERTIFICATION

I hereby certify that the well location shown on this plat was plotted from field notes of actual surveys made by me or under my supervision, and that the same is true and correct to the best of my belief.

SEPTEMBER 4, 2012

Date of Survey
Signature & Seal of Professional Surveyor

Ronald J. Eidson
Certificate Number 3290
Ronald J. Eidson 12641
3239
LSL REL W.O.: 12.11.1521 JWSC W.O.: 15.13.0027

GEODETIC COORDINATES
NAD 27 NME

SURFACE LOCATION
Y= 674029.1 N
X= 670397.3 E

LAT.=32.851760° N
LONG.=103.778468° W

GEODETIC COORDINATES
NAD 83 NME

SURFACE LOCATION
Y= 674093.5 N
X= 711575.5 E

LAT.=32.851879° N
LONG.=103.778974° W

BOTTOM HOLE LOCATION
NAD 27 NME

Y= 674047.5 N
X= 676335.4 E
LAT.=32.851723° N
LONG.=103.759133° W

BOTTOM HOLE LOCATION
NAD 83 NME

Y= 674112.0 N
X= 717513.6 E
LAT.=32.851842° N
LONG.=103.759638° W

CORNER COORDINATES TABLE
NAD 27 NME

A - Y= 674357.9 N, X= 670067.0 E
B - Y= 674374.9 N, X= 675343.8 E
C - Y= 674378.4 N, X= 676662.4 E
D - Y= 673059.1 N, X= 676670.3 E
E - Y= 673055.1 N, X= 675351.4 E
F - Y= 673038.2 N, X= 670068.4 E

CORNER COORDINATES TABLE
NAD 83 NME

A - Y= 674422.3 N, X= 711245.2 E
B - Y= 674439.4 N, X= 716522.0 E
C - Y= 674442.9 N, X= 717840.6 E
D - Y= 673123.6 N, X= 717848.5 E
E - Y= 673119.5 N, X= 716529.6 E
F - Y= 673102.7 N, X= 711246.7 E