

Submit 1 Copy To Appropriate District Office
District I - (575) 393-6161
1625 N. French Dr., Hobbs, NM 88240
District II - (575) 748-1283
811 S. First St., Artesia, NM 88210
District III - (505) 334-6178
1000 Rio Brazos Rd., Aztec, NM 87410
District IV - (505) 476-3460
1220 S. St. Francis Dr., Santa Fe, NM 87505

State of New Mexico
Energy, Minerals and Natural Resources

Form C-103
Revised July 18, 2013

HOBBS OCD

JUL 13 2016

RECEIVED

OIL CONSERVATION DIVISION
1220 South St. Francis Dr.
Santa Fe, NM 87505

WELL API NO. 30-025-38256
5. Indicate Type of Lease STATE <input checked="" type="checkbox"/> FEE <input type="checkbox"/>
6. State Oil & Gas Lease No. VO-5305
7. Lease Name or Unit Agreement Name Waylon BMD State
8. Well Number 8
9. OGRID Number 025575
10. Pool name or Wildcat Eight Mile Draw; Morrow, NW

SUNDRY NOTICES AND REPORTS ON WELLS

(DO NOT USE THIS FORM FOR PROPOSALS TO DRILL OR TO DEEPEN OR PLUG BACK TO A DIFFERENT RESERVOIR. USE "APPLICATION FOR PERMIT" (FORM C-101) FOR SUCH PROPOSALS.)

1. Type of Well: Oil Well ☐ Gas Well ☒ Other

2. Name of Operator
Yates Petroleum Corporation

3. Address of Operator
105 South Fourth Street, Artesia, NM 88210

4. Well Location
Unit Letter C : 660 feet from the North line and 2310 feet from the West line
Section 14 Township 11S Range 34E NMPM Lea County

11. Elevation (Show whether DR, RKB, RT, GR, etc.)
4145'GR

12. Check Appropriate Box to Indicate Nature of Notice, Report or Other Data

NOTICE OF INTENTION TO:

PERFORM REMEDIAL WORK ☐ PLUG AND ABANDON ☒
TEMPORARILY ABANDON ☐ CHANGE PLANS ☐
PULL OR ALTER CASING ☐ MULTIPLE COMPL ☐
DOWNHOLE COMMINGLE ☐
CLOSED-LOOP SYSTEM ☐
OTHER: ☐

SUBSEQUENT

REMEDIAL WORK
COMMENCE DRILLING OPNS
CASING/CEMENT JOB
OTHER:

INT TO PA PM
P&A NR
P&A R

13. Describe proposed or completed operations. (Clearly state all pertinent details, and give pertinent dates, including estimated date of starting any proposed work). SEE RULE 19.15.7.14 NMAC. For Multiple Completions: Attach wellbore diagram of proposed completion or recompletion.

* Pressure test csg.

Yates Petroleum Corporation plans to plug and abandon this well as follows:

- MIRU all safety equipment as needed. NU BOP. TOH with production equipment.
- Make a GR/JB run down to 12,200'. Set a 5-1/2" CIBP at 12,190' then dump 35' Class "H" cement on top of CIBP.
- Load hole with plugging mud. Spot a 25 sx Class "H" cement plug from 11,634'-11,424', this will cover top of Atoka.
- Spot a 25 sx Class "H" cement plug from 11,040'-10,830', this will cover top of Strawn.
- Spot a 25 sx Class "H" cement plug from 9248'-9058', this will cover top of Wolfcamp.
- Spot a 25 sx Class "H" cement plug from 7790'-7620', this will cover top of Abo.
- Perforate 5-1/2" casing at 5534'. Spot a 35 sx Class "C" cement plug from 5534'-5384' inside and outside 5-1/2" casing, this will cover top of Glorieta. WOC & TAG
- Perforate 5-1/2" casing at 4215'. Spot a 70 sx Class "C" cement plug from 4215'-3934' inside and outside 5-1/2" casing, this will cover 8-5/8" casing shoe and top of San Andres. WOC Perf at 2700. SQZ w/ 30 SX WOC & TAG (B. SALT)
- Perforate 5-1/2" casing at 2158'. Spot a 30 sx Class "C" cement plug from 2158'-2028' inside and outside 5-1/2" casing, this will cover top of Rustler. WOC & TAG
- Perforate 5-1/2" casing at 468'. Circulate a 115 sx Class "C" cement plug from 468' up to surface.
- Cut off wellhead, install dry hole marker and clean location.

Wellbore schematics attached

Spud Date:

R

NOTIFY OCD 24 HOURS PRIOR TO BEGINNING
PLUGGING OPERATIONS

I hereby certify that the information above is true and complete to the best of my knowledge and belief.

SIGNATURE Tina Huerta TITLE Regulatory Reporting Supervisor DATE July 11, 2016

Type or print name Tina Huerta E-mail address: tinah@yatespetroleum.com PHONE: 575-748-4168

For State Use Only

APPROVED BY Mach Whitman TITLE Petroleum Engr Specialist DATE 7/19/2016

Conditions of Approval (if any):

WELL NAME: Waylon BMD State #8 FIELD: _____

LOCATION: 660' FNL & 2310' FWL of Section 14-11S-34E Lea Co., NM

GL: 4,145' ZERO: _____ KB: 4,165'

SPUD DATE: 10/19/07 COMPLETION DATE: 2/18/08

COMMENTS: API No.: 30-025-38256

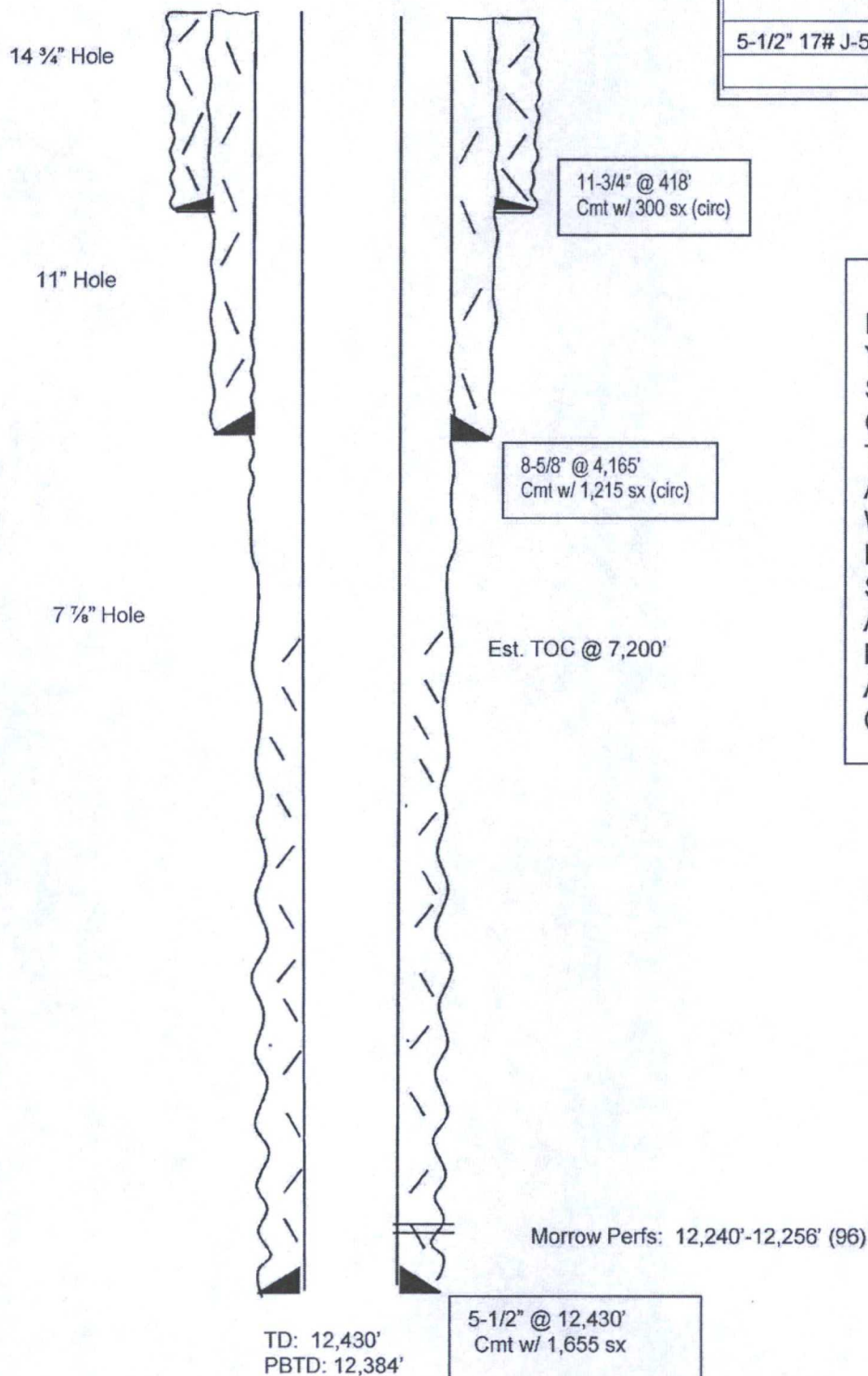
CASING PROGRAM

13-3/8" 42# H-40	418'
8-5/8" 24# & 32# J-55	4,165'
5-1/2" 17# J-55, L80 & P110	12,430'

Before

TOPS

Rustler	2,148'
Yates	2,775'
SA	4,074'
Glorieta	5,534'
Tubb	6,990'
Abo	7,780'
Wolfcamp	9,238'
Penn	9,906'
Strawn	11,030'
Atoka	11,624'
Morrow	12,081'
Austin	12,269'
Chester Lm	12,358'



WELL NAME: Waylon BMD State #8 FIELD:

LOCATION: 660' FNL & 2310' FWL of Section 14-11S-34E Lea Co., NM

GL: 4,145' ZERO: KB: 4,165'

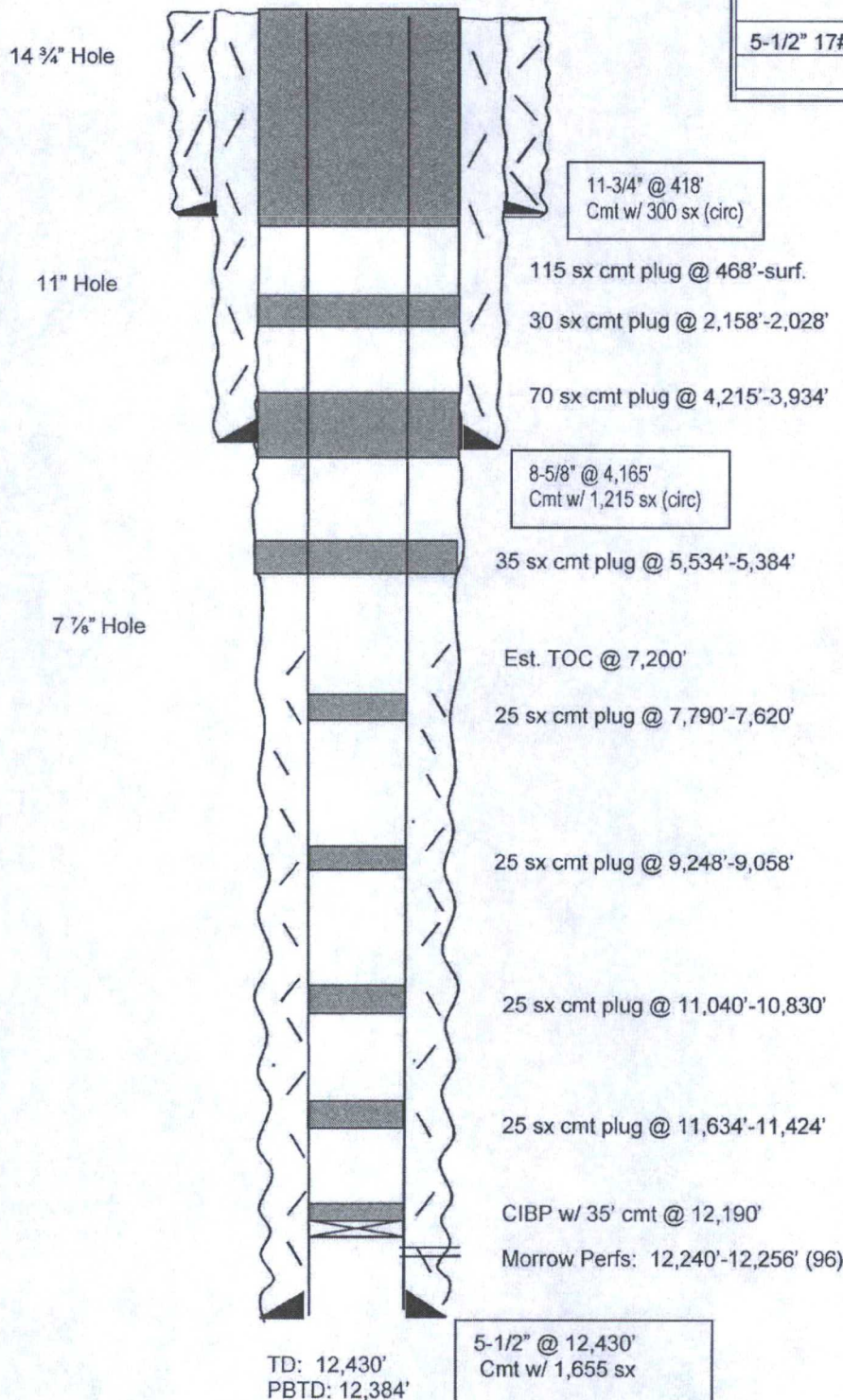
SPUD DATE: 10/19/07 COMPLETION DATE: 2/18/08

COMMENTS: API No.: 30-025-38256

CASING PROGRAM

13-3/8" 42# H-40	418'
8-5/8" 24# & 32# J-55	4,165'
5-1/2" 17# J-55, L80 & P110	12,430'

After



TOPS

Rustler	2,148'
Yates	2,775'
SA	4,074'
Glorieta	5,534'
Tubb	6,990'
Abo	7,780'
Wolfcamp	9,238'
Penn	9,906'
Strawn	11,030'
Atoka	11,624'
Morrow	12,081'
Austin	12,269'
Chester Lm	12,358'

Not to Scale
6/20/16
BAL