

DISTRICT I
1625 N. FRENCH DR., HOBBS, NM 88240
Phone: (575) 393-6181 Fax: (575) 393-0720

DISTRICT II
811 S. FIRST ST., ARTESIA, NM 88210
Phone: (575) 748-1283 Fax: (575) 748-9720

DISTRICT III
1000 RIO BRAZOS RD., AZTEC, NM 87410
Phone: (505) 334-6178 Fax: (505) 334-6170

DISTRICT IV
1220 S. ST. FRANCIS DR., SANTA FE, NM 87505
Phone: (505) 476-3460 Fax: (505) 476-3462

State of New Mexico
Energy, Minerals & Natural Resources Department
OIL CONSERVATION DIVISION
1220 SOUTH ST. FRANCIS DR.
Santa Fe, New Mexico 87505

Form C-102

Revised August 1, 2011

Submit one copy to appropriate
District Office

☐ AMENDED REPORT

WELL LOCATION AND ACREAGE DEDICATION PLAT

| | | |
|----------------------------|-------------------------------------|--|
| API Number 30-025-43001 | Pool Code 97922 | Pool Name WC-025 G-06 S223421L; Bone Spring |
| Property Code 315744 | Property Name SMALLS FEDERAL | Well Number 1H |
| OGRID No. 229137 | Operator Name COG OPERATING, LLC | Elevation 3403.8' |

Surface Location

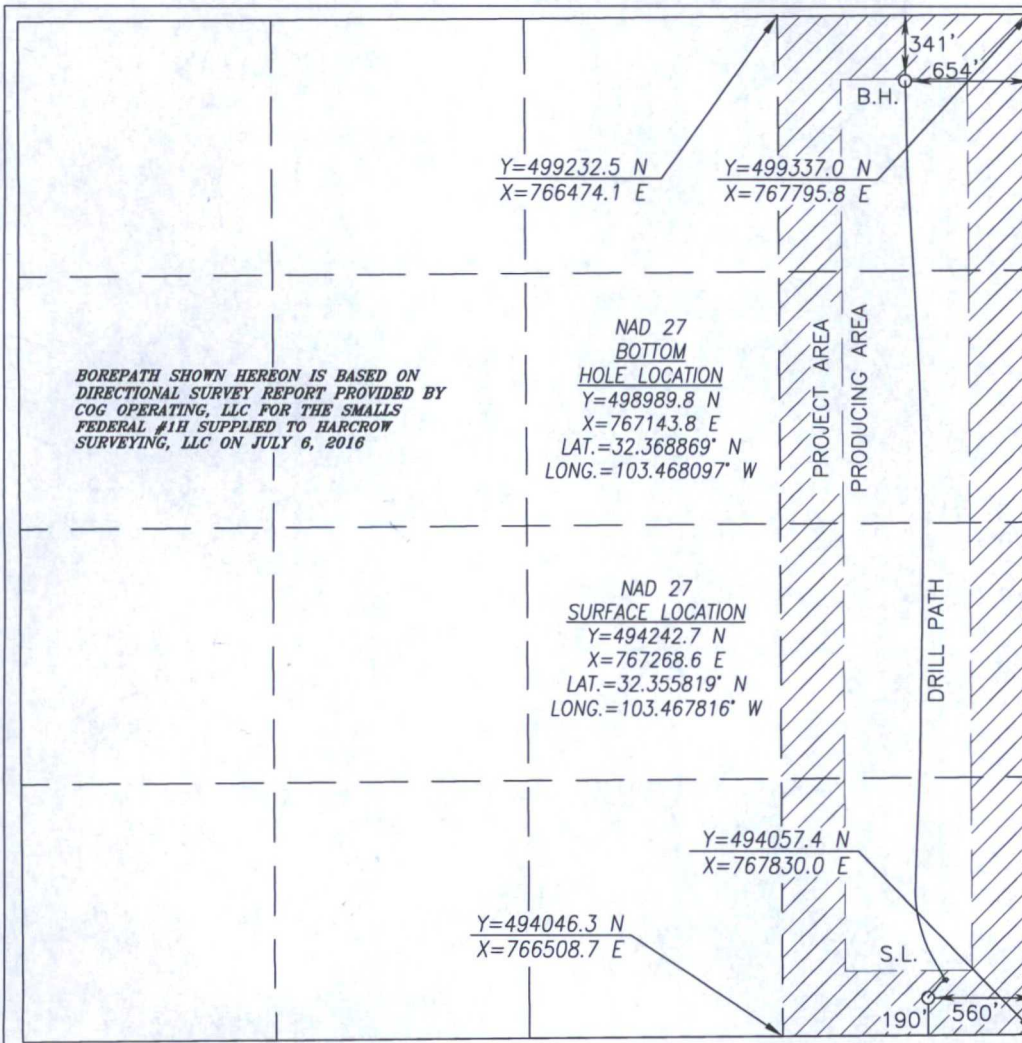
| | | | | | | | | | |
|--------------------|---------------|------------------|---------------|---------|-----------------------|---------------------------|-----------------------|------------------------|---------------|
| UL or lot No. P | Section 28 | Township 22-S | Range 34-E | Lot Idn | Feet from the 190' | North/South line SOUTH | Feet from the 560' | East/West line EAST | County LEA |
|--------------------|---------------|------------------|---------------|---------|-----------------------|---------------------------|-----------------------|------------------------|---------------|

Bottom Hole Location If Different From Surface

| | | | | | | | | | |
|--------------------|---------------|------------------|---------------|---------|-----------------------|---------------------------|-----------------------|------------------------|---------------|
| UL or lot No. A | Section 28 | Township 22-S | Range 34-E | Lot Idn | Feet from the 341' | North/South line NORTH | Feet from the 654' | East/West line EAST | County LEA |
|--------------------|---------------|------------------|---------------|---------|-----------------------|---------------------------|-----------------------|------------------------|---------------|

| | | | |
|------------------------|-----------------|--------------------|-----------|
| Dedicated Acres 160 | Joint or Infill | Consolidation Code | Order No. |
|------------------------|-----------------|--------------------|-----------|

NO ALLOWABLE WILL BE ASSIGNED TO THIS COMPLETION UNTIL ALL INTERESTS HAVE BEEN CONSOLIDATED
OR A NON-STANDARD UNIT HAS BEEN APPROVED BY THE DIVISION



OPERATOR CERTIFICATION

I hereby certify that the information herein is true and complete to the best of my knowledge and belief, and that this organization either owns a working interest or unleased mineral interest in the land including the proposed bottom hole location or has a right to drill this well at this location pursuant to a contract with an owner of such mineral or working interest, or to a voluntary pooling agreement or a compulsory pooling order heretofore entered by the division.

[Signature] 7/13/16
Signature Date

Stormi Davis

Printed Name

sdavis@concho.com

E-mail Address

SURVEYOR CERTIFICATION

I hereby certify that the well location shown on this plat was plotted from field notes of actual surveys made by me or under my supervision, and that the same is true and correct to the best of my belief.

JAN 9, 2015/FEB 24, 2016

Date of Survey/Date of Geographic Survey

Signature & Seal of Professional Surveyor



[Signature] 7/12/16

Certificate No. CHAD HARCROW 17777

W.O. #16-521

DRAWN BY: CF