

District I
1625 N. French Dr., Hobbs, NM 88240
Phone: (575) 393-6161 Fax: (575) 393-0720
District II
811 S. First St., Artesia, NM 88210
Phone: (575) 748-1283 Fax: (575) 748-9720
District III
1000 Rio Brazos Road, Aztec, NM 87410
Phone: (505) 334-6178 Fax: (505) 334-6170
District IV
1220 S. St. Francis Dr., Santa Fe, NM 87505
Phone: (505) 476-3460 Fax: (505) 476-3462

State of New Mexico
Energy, Minerals & Natural Resources Department
OIL CONSERVATION DIVISION
1220 South St. Francis Dr.
Santa Fe, NM 87505

Form C-102
Revised August 1, 2011
Submit one copy to appropriate
District Office

RECEIVED
JUL 20 2016
HOBBS OGD

☐ AMENDED REPORT

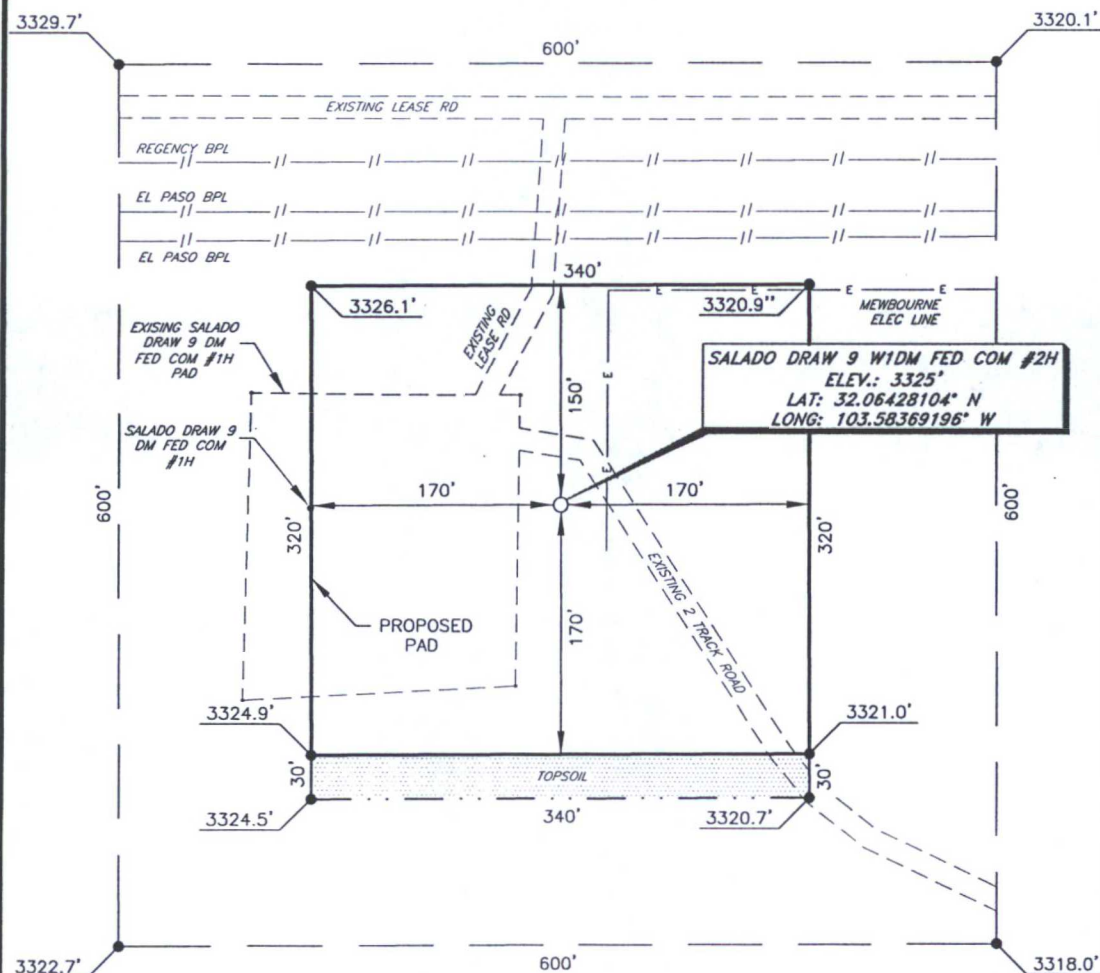
WELL LOCATION AND ACREAGE DEDICATION PLAT

¹ API Number 30-025-49976		² Pool Code 83600		³ Pool Name RED HILLS WOLF CAMP GAS	
⁴ Property Code 316523		⁵ Property Name SALADO DRAW 9 WIDM FED COM			
⁷ OGRID NO. 14744		⁸ Operator Name MEWBOURNE OIL COMPANY			
		⁶ Well Number 2H			
		⁹ Elevation 3325'			
¹⁰ Surface Location					
UL or lot no. D	Section 9	Township 26S	Range 33E	Lot Idn	Feet from the 320
				North/South line NORTH	Feet From the 500
				East/West line WEST	County LEA
¹¹ Bottom Hole Location If Different From Surface					
UL or lot no. M	Section 9	Township 26S	Range 33E	Lot Idn	Feet from the 330
				North/South line SOUTH	Feet from the 500
				East/West line WEST	County LEA
¹² Dedicated Acres 640		¹³ Joint or Infill		¹⁴ Consolidation Code	
				¹⁵ Order No.	

No allowable will be assigned to this completion until all interest have been consolidated or a non-standard unit has been approved by the division.

		<p>¹⁷ OPERATOR CERTIFICATION</p> <p>I hereby certify that the information contained herein is true and complete to the best of my knowledge and belief, and that this organization either owns a working interest or unleased mineral interest in the land including the proposed bottom hole location or has a right to drill this well at this location pursuant to a contract with an owner of such a mineral or working interest, or to a voluntary pooling agreement or a compulsory pooling order heretofore entered by the division.</p> <p>Signature: R. Bishop Date: 8-13-15</p> <p>Printed Name: BRADLEY BISHOP</p> <p>E-mail Address:</p>
<p>¹⁸ SURVEYOR CERTIFICATION</p> <p>I hereby certify that the well location shown on this plat was plotted from field notes of actual surveys made by me or under my supervision, and that the same is true and correct to the best of my belief.</p> <p>10-23-2014</p> <p>Date of Survey</p> <p>Signature and Seal of Professional Surveyor: Robert M. Howett</p> <p>19680</p> <p>Certificate Number</p>		<p>19680</p> <p>Certificate Number</p>

MEWBOURNE OIL COMPANY
SALADO DRAW 9 W1DM FED COM #2H
(320' FNL & 500' FWL)
SECTION 9, T26S, R33E
N. M. P. M., LEA CO., NEW MEXICO



DIRECTIONS TO LOCATION

From the intersection CR-J1 (Orla) and CR-J2 (Battle Axe),
Go East CR-J2 winding North approx. 11.8 miles to a lease road;

Turn left and go West approx. 1.8 miles to a lease road;

Turn left and go South approx. 128 feet to Salado Draw 9 DM Fed Com
#1H well pad;

Well is on the left.

SCALE: 1" = 100'
0 50 100
BEARINGS ARE
NAD 27 GRID - NM EAST
DISTANCES ARE
GROUND.

Firm No.: TX 10193838 NM 4655451

Copyright 2014 - All Rights Reserved

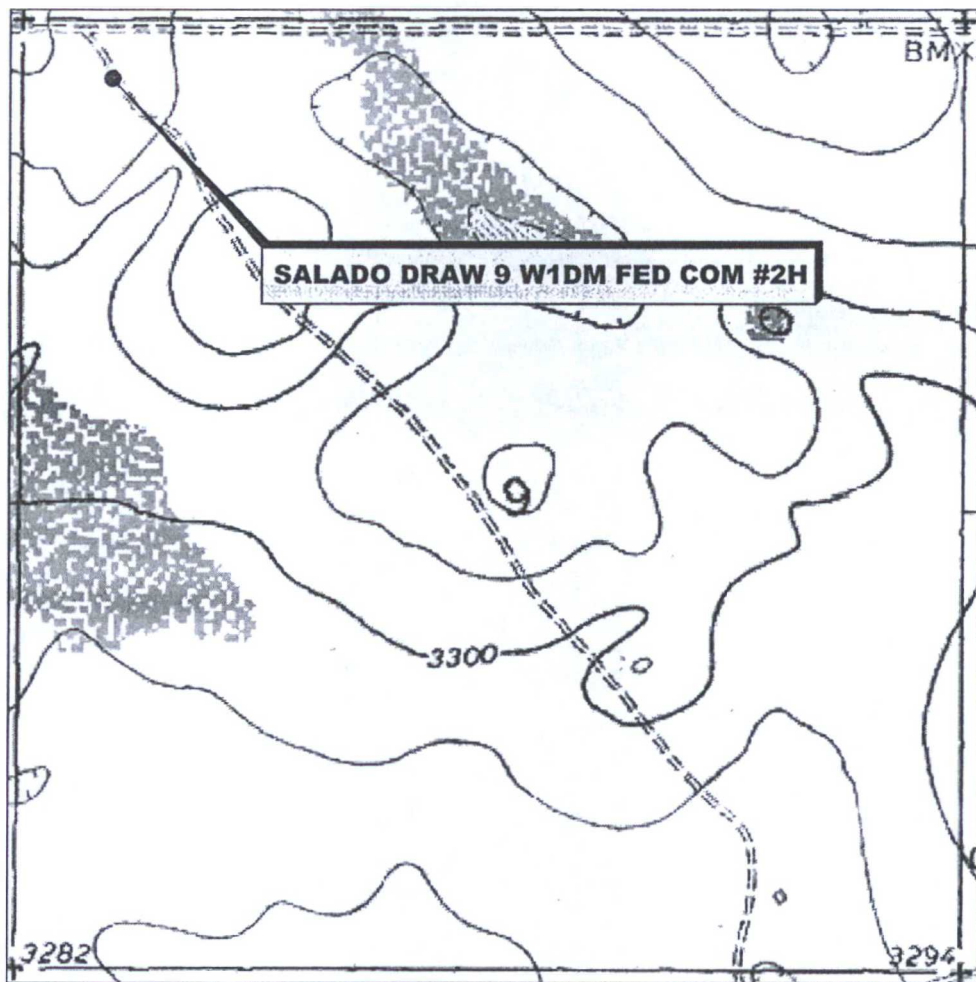
NO.	REVISION	DATE
JOB NO.:	LS140431	
DWG. NO.:	140431PAD	

RRC

308 W. BROADWAY ST., HOBBS, NM 88240 (575) 964-8200

SCALE: 1" = 100'
DATE: 10-23-2014
SURVEYED BY: BK/KR
DRAWN BY: ARJ
APPROVED BY: RMH
SHEET: 1 OF 1

LOCATION VERIFICATION MAP



SECTION 9, TWP. 26 SOUTH, RGE. 33 EAST,
N. M. P. M., LEA CO., NEW MEXICO

OPERATOR: Mewbourne Oil Company
LEASE: Salado Draw 9 W1DM Fed Com
WELL NO.: 2H
ELEVATION: 3325'

LOCATION: 320' FNL & 500' FWL
CONTOUR INTERVAL: 10'
USGS TOPO. SOURCE MAP:
Paduca Breaks East, NM (1973)

Firm No.: TX 10193838 NM 4655451

Copyright 2014 - All Rights Reserved

NO.	REVISION	DATE
JOB NO.: LS140431		
DWG. NO.: 140431LVM		

RRC

308 W. BROADWAY ST., HOBBS, NM 88240 (575) 964-8200

SCALE: 1"=1000'
DATE: 10-23-2014
SURVEYED BY: BK/KR
DRAWN BY: ARJ
APPROVED BY: RMH
SHEET : 1 OF 1

VICINITY MAP

NOT TO SCALE



SECTION 9, TWP. 26 SOUTH, RGE. 33 EAST,
N. M. P. M., LEA CO., NEW MEXICO

OPERATOR: Mewbourne Oil Company
LEASE: Salado Draw 9 W1DM Fed Com
WELL NO.: 2H

LOCATION: 320' FNL & 500' FWL
ELEVATION: 3325'

Firm No.: TX 10193838 NM 4655451

Copyright 2014 - All Rights Reserved

NO.	REVISION	DATE
JOB NO.: LS140431		
DWG. NO.: 140431VM		

RRC

308 W. BROADWAY ST., HOBBS, NM 88240 (575) 964-8200

SCALE: NTS
DATE: 10-23-2014
SURVEYED BY: BK/KR
DRAWN BY: ARJ
APPROVED BY: RMH
SHEET : 1 OF 1

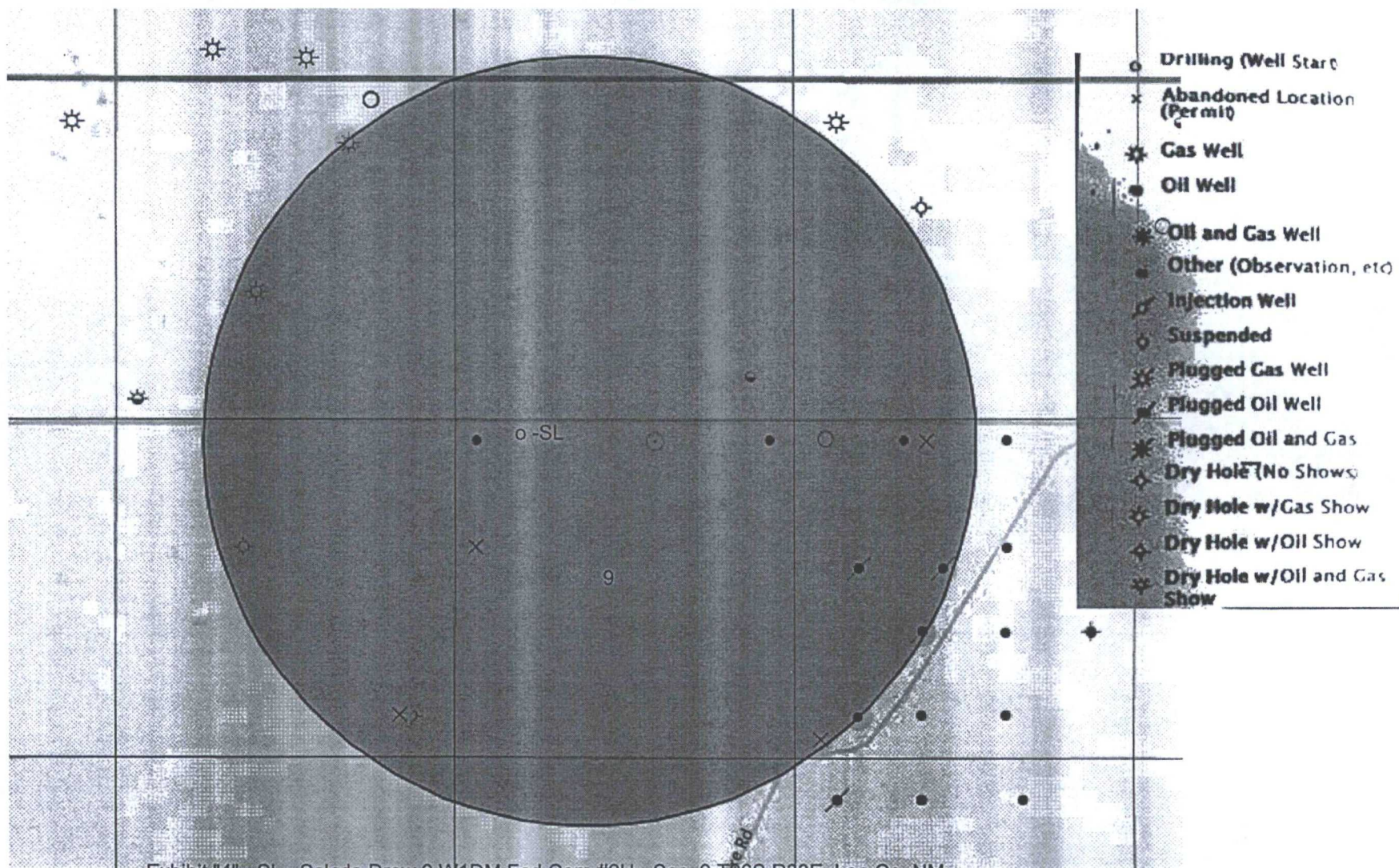


Exhibit "4" - SL - Salado Draw 9 W1DM Fed Com #2H - Sec. 9 T26S R33E, Lea Co. NM

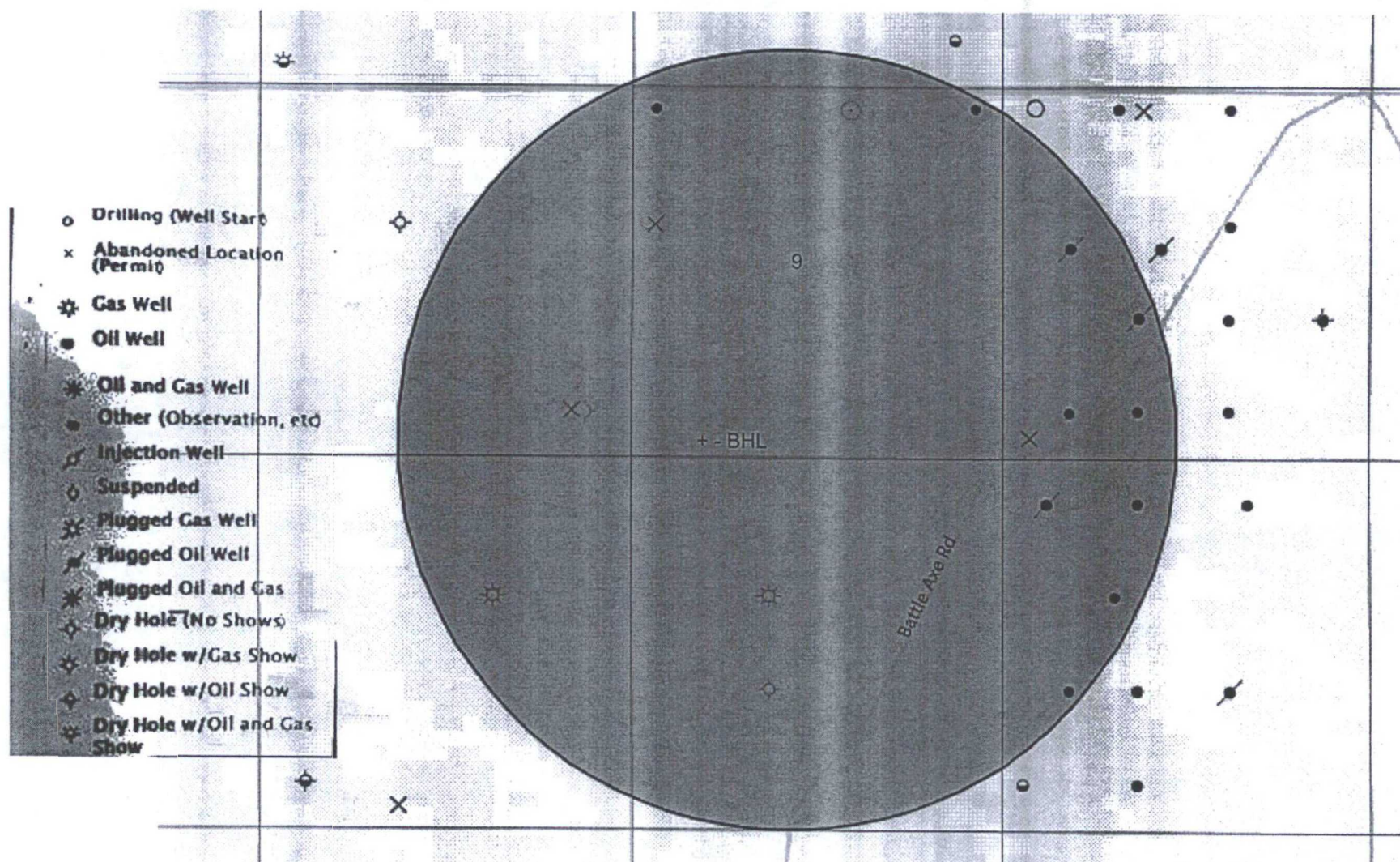


Exhibit "4A" - BHL - Salado Draw 9 W1DM Fed Com #2H - Sec. 9 T26S R33E, Lea Co. NM