

District I
1625 N. French Dr., Hobbs, NM 88240
Phone: (575) 393-6161 Fax: (575) 393-0720
District II
811 S. First St., Artesia, NM 88210
Phone: (575) 748-1283 Fax: (575) 748-9720
District III
1000 Rio Brazos Road, Aztec, NM 87410
Phone: (505) 334-6178 Fax: (505) 334-6170
District IV
1220 S. St. Francis Dr., Santa Fe, NM 87505
Phone: (505) 476-3460 Fax: (505) 476-3462

State of New Mexico
Energy, Minerals & Natural Resources Department
OIL CONSERVATION DIVISION
1220 South St. Francis Dr.
Santa Fe, NM 87505

Form C-102
Revised August 1, 2011
Submit one copy to appropriate
District Office

☐ AMENDED REPORT



WELL LOCATION AND ACREAGE DEDICATION PLAT

30-025- ¹ AP ¹ Number 43377	² Pool Code 98081	Pool Name WC-025 G-09 5263225A; WOLF CAMP
⁴ Property Code 313575 217817	⁵ Property Name WAR HAMMER 25 FEDERAL COM W1	⁶ Well Number 15H
	⁷ Operator Name ConocoPhillips Company	⁸ Elevation 3134'

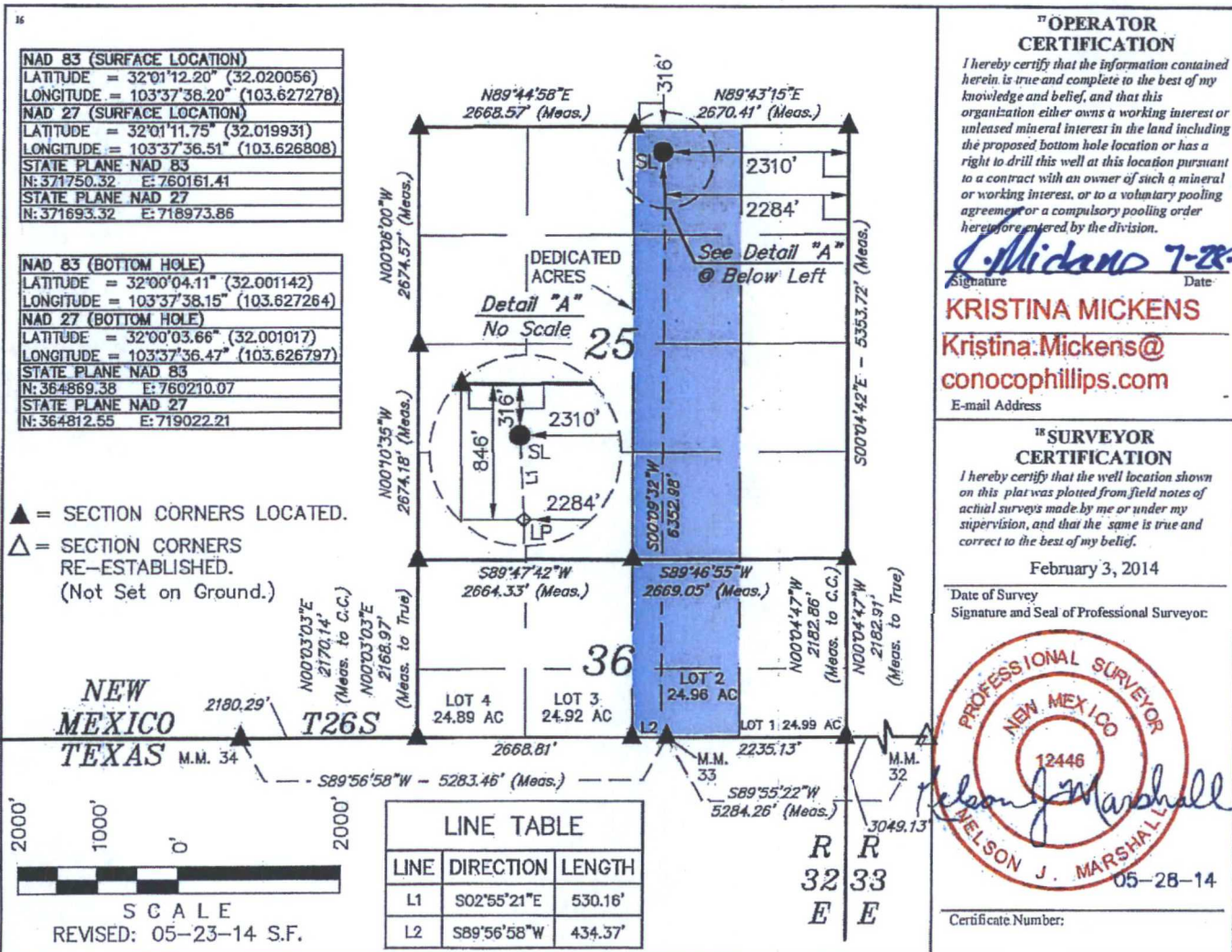
"Surface Location

UL or lot no.	Section	Township	Range	Lot Idn	Feet from the	North/South line	Feet from the	East/West line	County
B	25	26 S	32 E		316	NORTH	2310	EAST	LEA

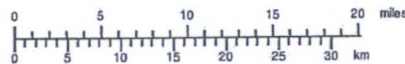
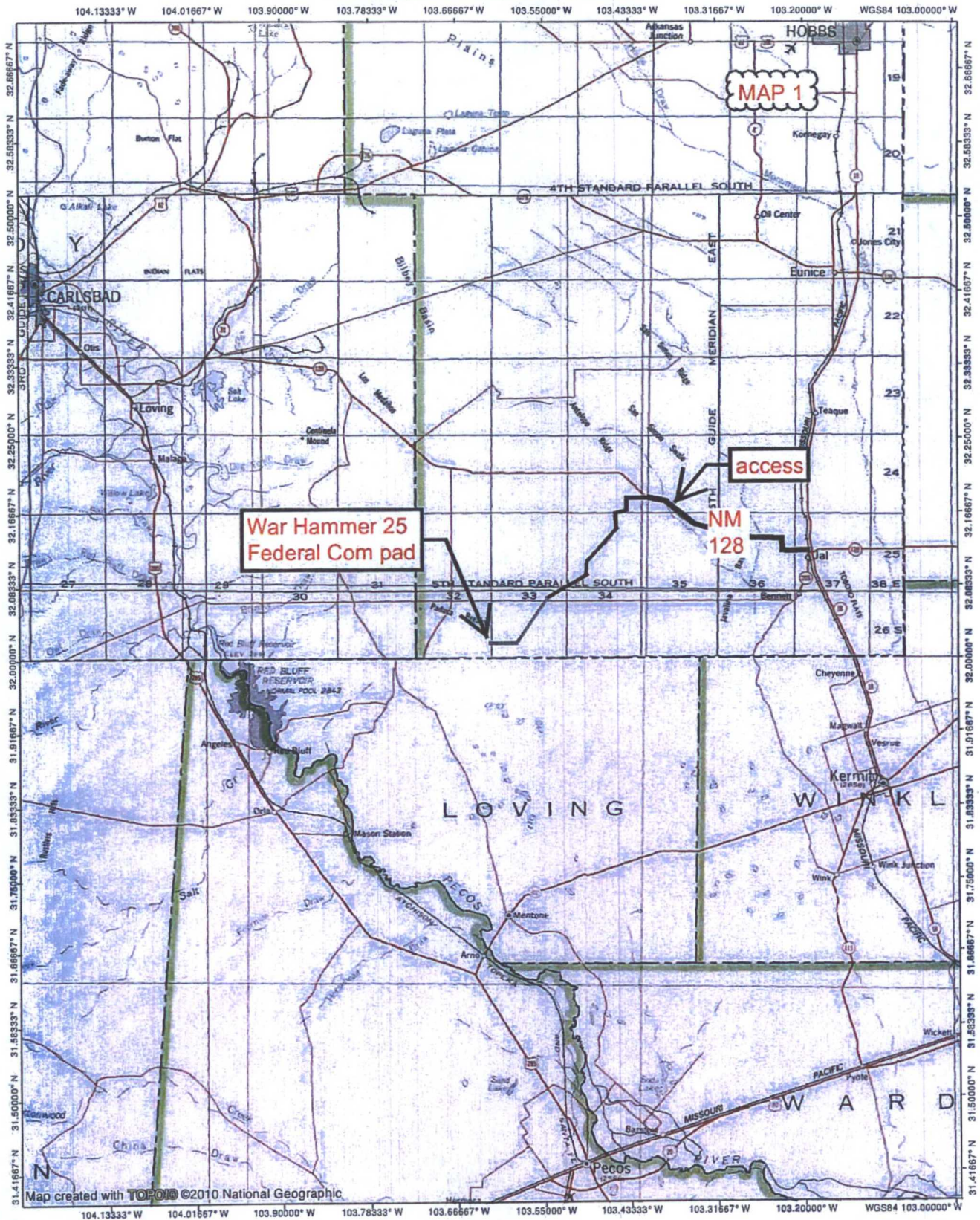
"Bottom Hole Location If Different From Surface

UL or lot no.	Section	Township	Range	Lot Idn	Feet from the	North/South line	Feet from the	East/West line	County
2	36	26 S	32 E		330	SOUTH	2310	EAST	LEA
¹² Dedicated Acres 224.96		¹³ Joint or Infill		¹⁴ Consolidation Code C		¹⁵ Order No.			

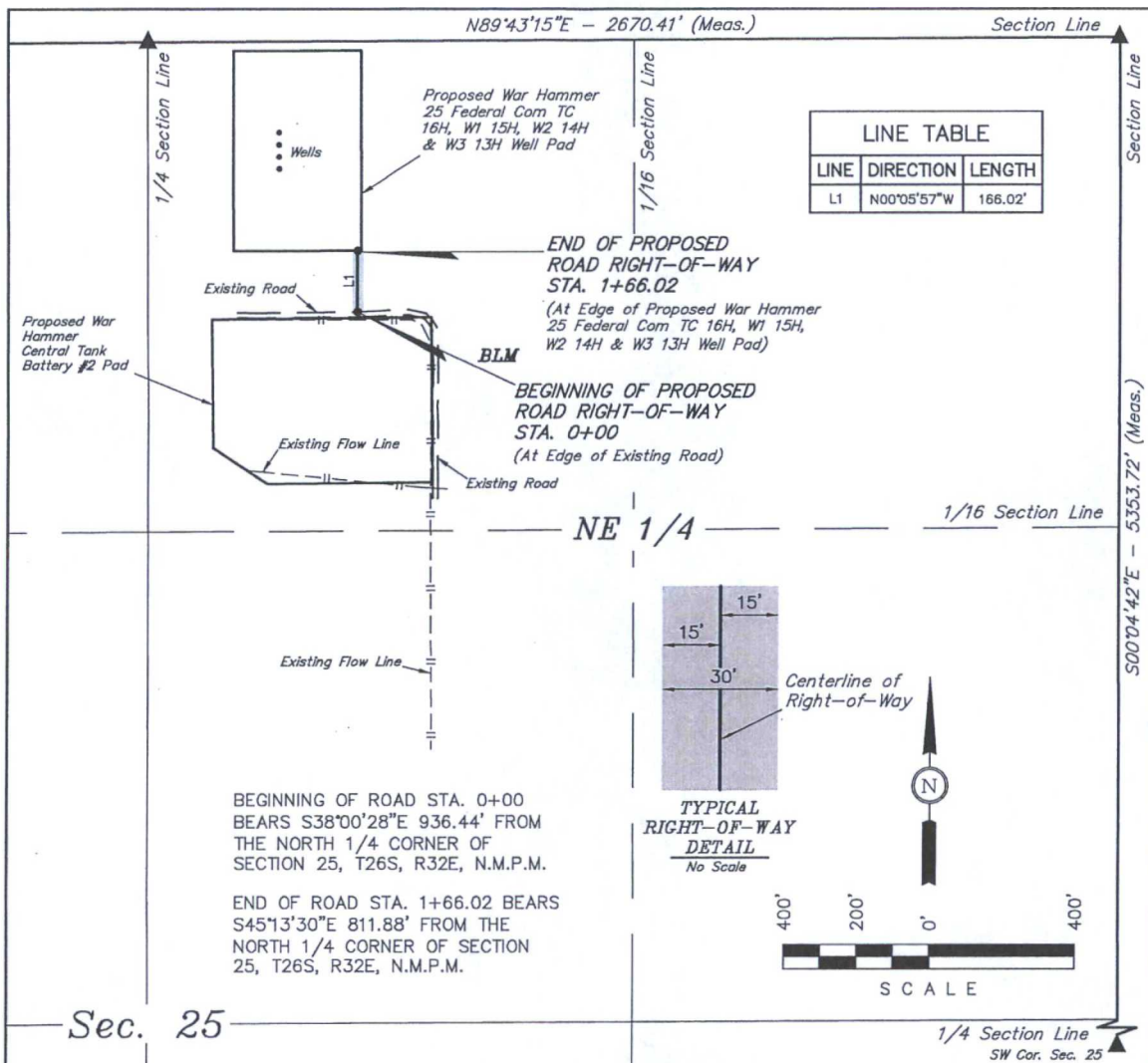
No allowable will be assigned to this completion until all interests have been consolidated or a non-standard unit has been approved by the division.



TOPOI map printed on 06/29/14 from "Untitled.tpo"



TN MN
7°
06/29/14



A 30' WIDE RIGHT-OF-WAY 15' ON EACH SIDE OF THE FOLLOWING DESCRIBED CENTERLINE.

BEGINNING AT A POINT IN THE NW 1/4 NE 1/4 OF SECTION 25, T26S, R32E, N.M.P.M., WHICH BEARS S38°00'28"E 936.44' FROM THE NORTH 1/4 CORNER OF SAID SECTION 25, THENCE N00°05'57"W 166.02' TO A POINT IN THE NW 1/4 NE 1/4 OF SAID SECTION 25, WHICH BEARS S45°13'30"E 811.88' FROM THE NORTH 1/4 CORNER OF SAID SECTION 25. THE SIDE LINES OF SAID DESCRIBED RIGHT-OF-WAY BEING SHORTENED OR ELONGATED TO MEET THE GRANTOR'S PROPERTY LINES. BASIS OF BEARINGS IS A G.P.S. OBSERVATION. CONTAINS 0.114 ACRES MORE OR LESS.

RIGHT-OF-WAY LENGTHS			
DESCRIPTION	FEET	ACRES	RODS
TOTAL	166.02	0.114	10.06

▲ = SECTION CORNERS LOCATED.

NOTES:

- The maximum grade of existing ground for the proposed access road is $\pm 0.5\%$.

CERTIFICATE

THIS IS TO CERTIFY THAT THE ABOVE MAP WAS PREPARED FROM FIELD NOTES OF ACTUAL SURVEYS MADE BY ME OR UNDER MY SUPERVISION AND THAT THE SAME ARE TRUE AND CORRECT TO THE BEST OF MY KNOWLEDGE AND BELIEF.

12446

Helson J. Marshall

REGISTERED LAND SURVEYOR

REGISTRATION NO. 12446

STATE OF NEW MEXICO

05-16-16

REV: 3 05-11-16 C.D. (TANK BATTERY SIZE CHANGE)



Corporate Office * 85 South 200 East
Vernal, UT 84078 * (435) 789-1017

ConocoPhillips

ConocoPhillips Company

WAR HAMMER 25 FEDERAL COM
TC 16H, W1 15H, W2 14H & W3 13H
SECTION 25, T26S, R32E, N.M.P.M.
NW 1/4 NE 1/4

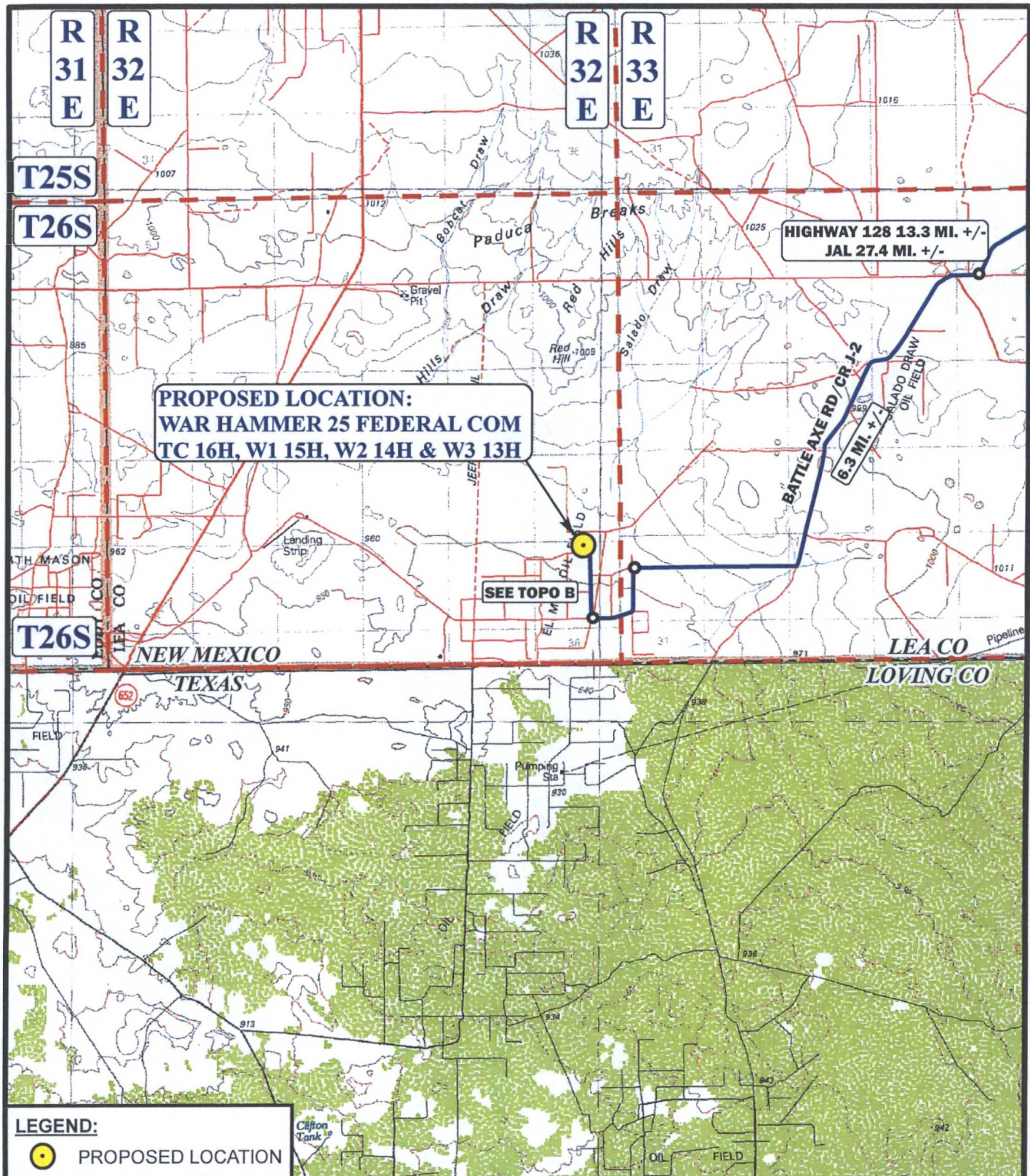
DRAWN BY: S.F.

SCALE: 1" = 400'

DATE: 02-24-14

ACCESS ROAD R-O-W

FIGURE #6



LEGEND:



PROPOSED LOCATION

SCALE: 1:100,000

REVISION: 00-00-00

DRAWN BY: L.S.

DATE DRAWN: 01-08-14

N



ConocoPhillips

ConocoPhillips Company

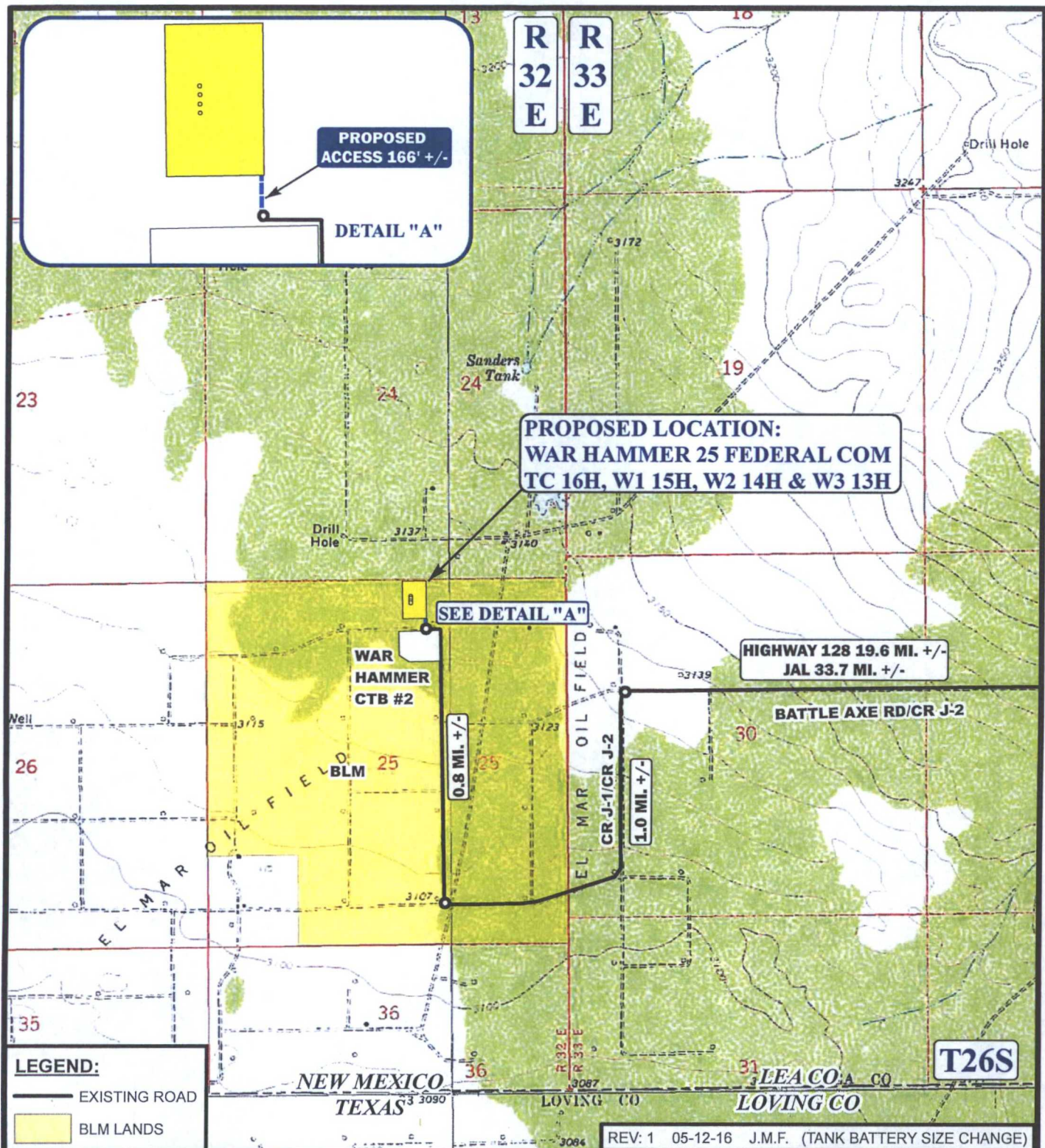
WAR HAMMER 25 FEDERAL COM
TC 16H, W1 15H, W2 14H & W3 13H
SECTION 25, T26S, R32E, N.M.P.M.
NW 1/4 NE 1/4

ACCESS ROAD MAP

TOPO A



Corporate Office * 85 South 200 East
Vernal, UT 84078 * (435) 789-1017



*PARCEL DATA SHOWN HAS BEEN OBTAINED FROM VARIOUS SOURCES AND SHOULD BE USED FOR MAPPING, GRAPHIC AND PLANNING PURPOSES ONLY. NO WARRANTY IS MADE BY UINTAH ENGINEERING & LAND SURVEYING (UELS) FOR ACCURACY OF THE PARCEL DATA.

SCALE: 1" = 2000'

DRAWN BY: L.S.

DATE DRAWN: 01-08-14



Corporate Office * 85 South 200 East
Vernal, UT 84078 * (435) 789-1017



ConocoPhillips

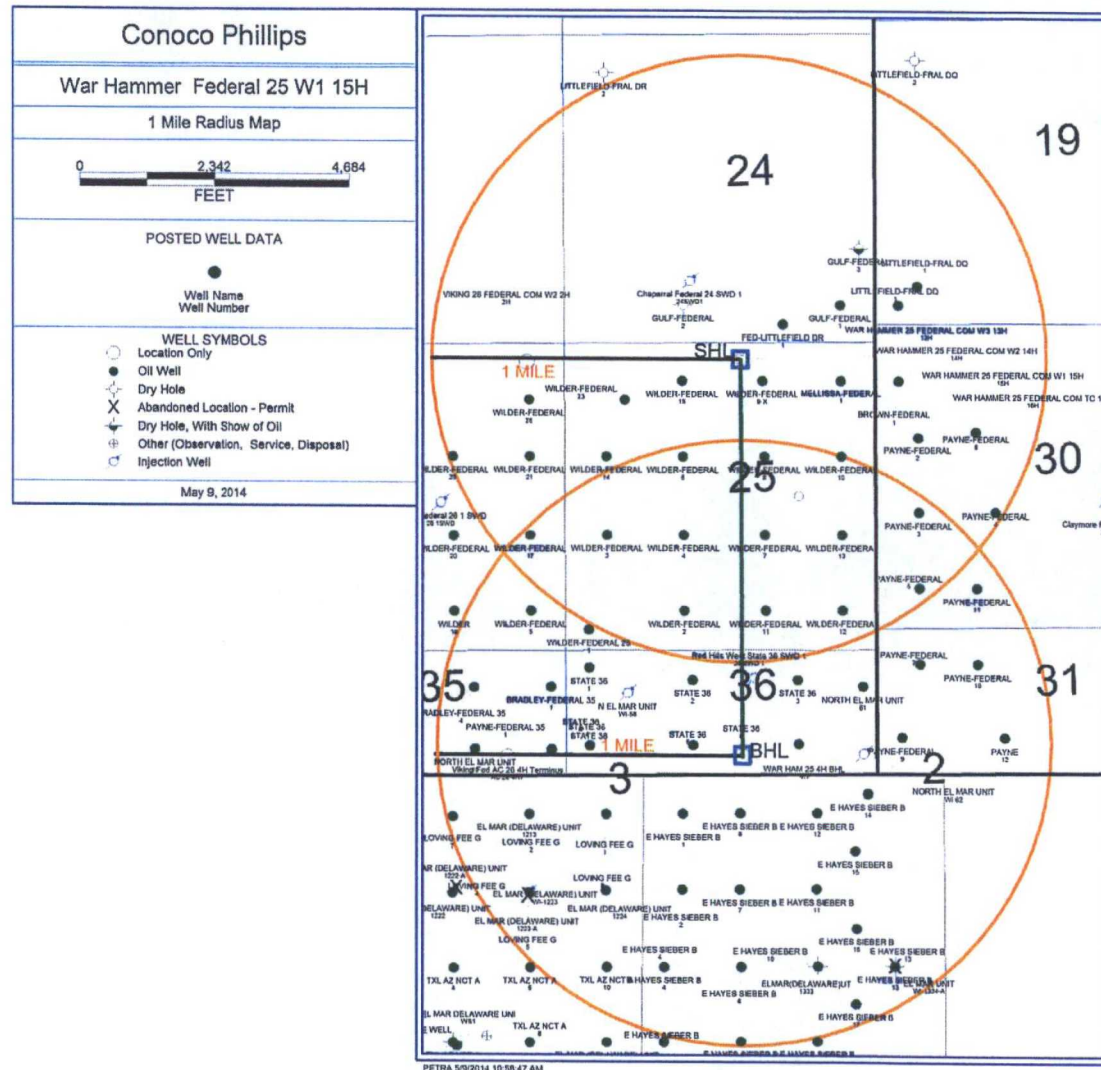
ConocoPhillips Company

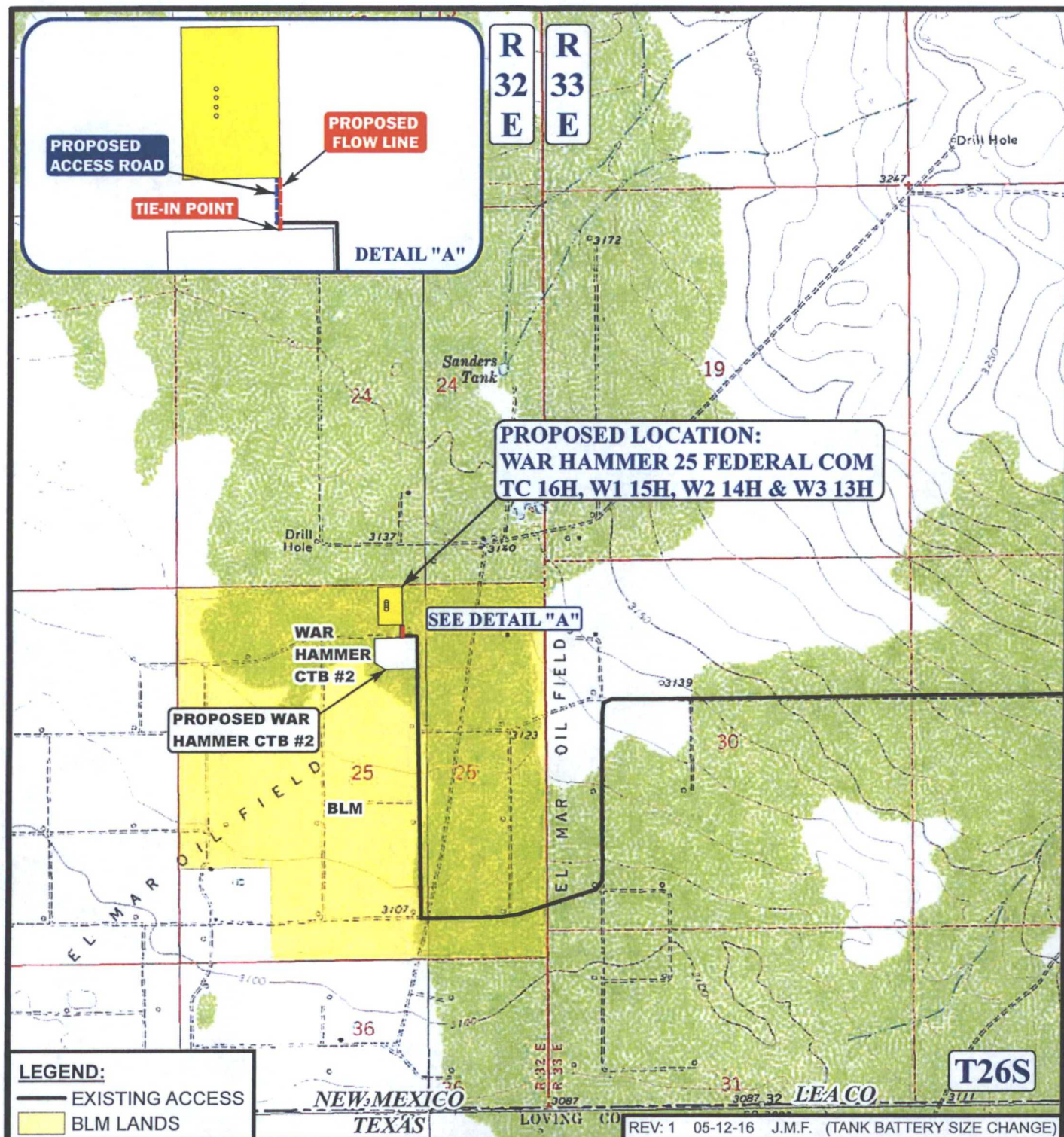
WAR HAMMER 25 FEDERAL COM
TC 16H, W1 15H, W2 14H & W3 13H
NW 1/4 NE 1/4, SECTION 25, T26S, R32E, N.M.P.M.
LEA COUNTY, NEW MEXICO

ACCESS ROAD MAP

TOPO B

MAP 5





APPROXIMATE TOTAL FLOW LINE DISTANCE = 183' +/-

*PARCEL DATA SHOWN HAS BEEN OBTAINED FROM VARIOUS SOURCES AND SHOULD BE USED FOR MAPPING, GRAPHIC AND PLANNING PURPOSES ONLY. NO WARRANTY IS MADE BY UINTAH ENGINEERING & LAND SURVEYING (UELS) FOR ACCURACY OF THE PARCEL DATA.

SCALE: 1" = 2000'

DRAWN BY: L.S.

DATE DRAWN: 01-08-14



Corporate Office * 85 South 200 East
Vernal, UT 84078 * (435) 789-1017



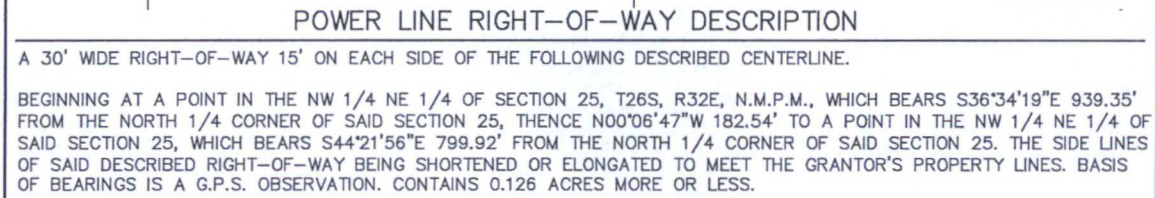
ConocoPhillips

ConocoPhillips Company

WAR HAMMER 25 FEDERAL COM
TC 16H, W1 15H, W2 14H & W3 13H
NW 1/4 NE 1/4, SECTION 25, T26S, R32E, N.M.P.M.
LEA COUNTY, NEW MEXICO

FLOW LINE MAP

TOPO D



RIGHT-OF-WAY LENGTHS			
DESCRIPTION	FEET	ACRES	RODS
TOTAL	182.54	0.126	11.06

▲ = SECTION CORNERS LOCATED.

CERTIFICATE

THIS IS TO CERTIFY THAT THE ABOVE PLAN WAS PREPARED FROM FIELD NOTES OF ACTUAL SURVEYS MADE BY ME OR UNDER MY SUPERVISION AND THAT THE SAME ARE TRUE AND CORRECT TO THE BEST OF MY KNOWLEDGE AND BELIEF.

REGISTERED LAND SURVEYOR
REGISTRATION NO. 12446
STATE OF NEW MEXICO

REV: 2 05-11-16 C.D. (TANK BATTERY SIZE CHANGE)

NOTES:



ConocoPhillips Company

WAR HAMMER 25 FEDERAL COM
TC 16H, W1 15H, W2 14H & W3 13H
SECTION 25, T26S, R32E, N.M.P.M.
NW 1/4 NE 1/4

DRAWN BY: S.F.

SCALE: 1" = 400'

DATE: 02-24-14

POWER LINE R-O-W

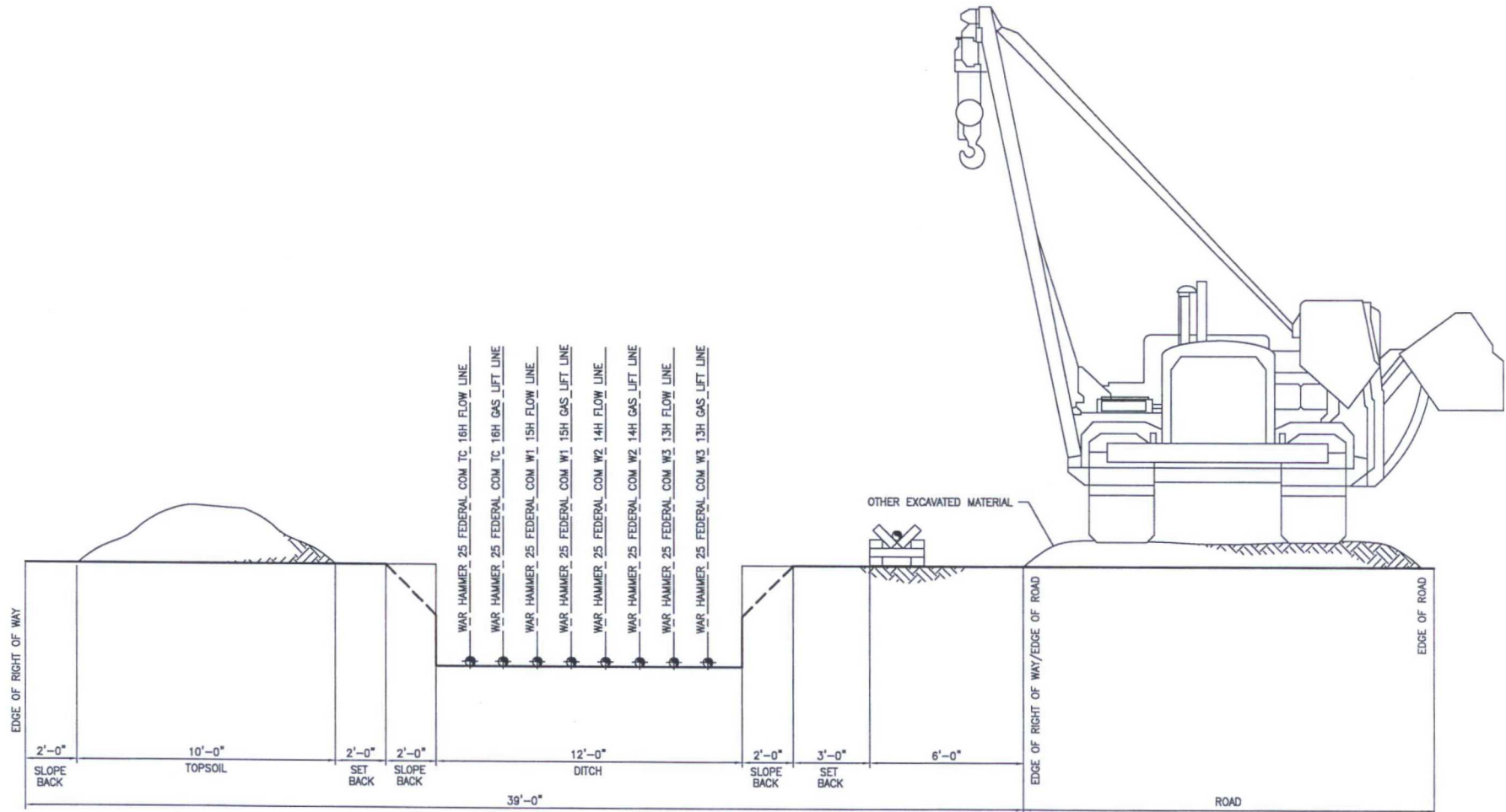
FIGURE #8



Corporate Office * 85 South 200 East
Vernal, UT 84078 * (435) 789-1017

FLOW LINE RIGHT OF WAY

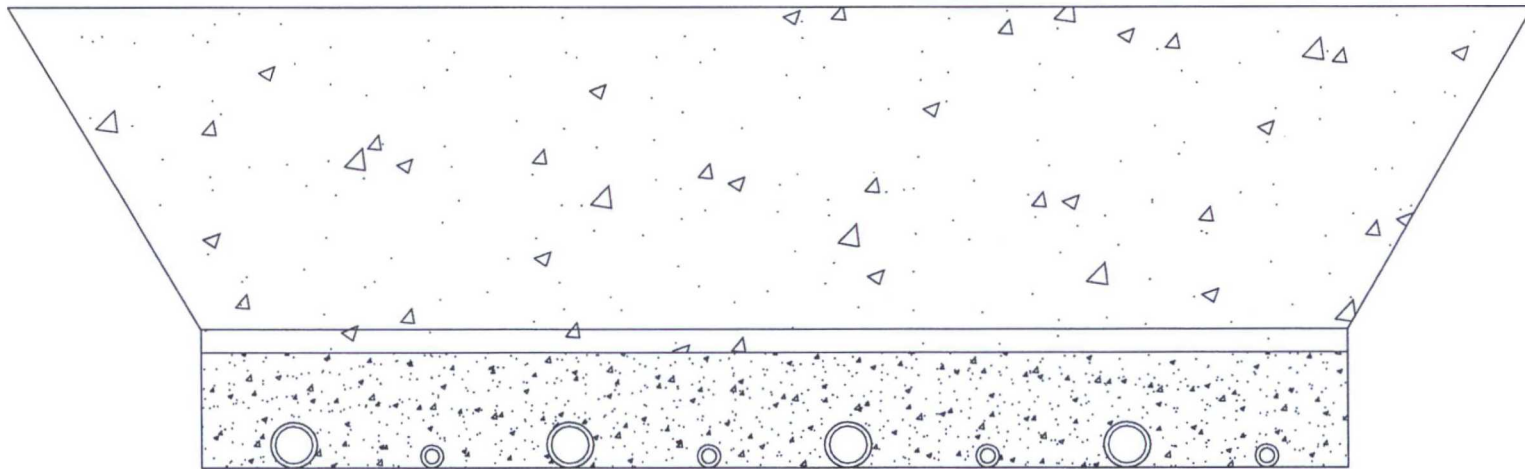
WAR HAMMER 25 FEDERAL COM W3 13H, WAR HAMMER 25 FEDERAL COM W2 14H, WAR HAMMER 25 FEDERAL COM W1 15H, WAR HAMMER 25 FEDERAL COM TC 16H



REFERENCE DWG NO:												DRAWN: TTM				DESIGN: RAR				<div>ConocoPhillips</div> <div>Mid Continent Business Unit</div>				PRMU FLOW LINE R-O-W WAR HAMMER 25 FEDERAL COM W3 13H, W2 14H, W1 15H, TC 16H																			
												CHECKED: RAR				APPROVAL:												CC NO:															
A 05/13/14				ISSUE FOR APPROVAL				TTM RAR												DRAWING NO:																							
REV DATE				REVISION				BY CHK APP APP				SCALE: NA				DATE: 05/13/14				CADD FILENAME:				JOB NO: -				SUB JOB NO: -				DRAWING NO: WAR HAMMER COM W3 13H_W2 14H_W1 15H_TC 16H				SHEET: 1 OF 1				REV: A			

BACKFILL AROUND PIPE

WAR HAMMER 25 FEDERAL COM W3 13H, WAR HAMMER 25 FEDERAL COM
W2 14H, WAR HAMMER 25 FEDERAL COM W1 15H, WAR HAMMER 25
FEDERAL COM TC 16H



BACKFILL DIRT TO BE AS FREE OF ROCKS AND LARGE PARTICLES AS POSSIBLE

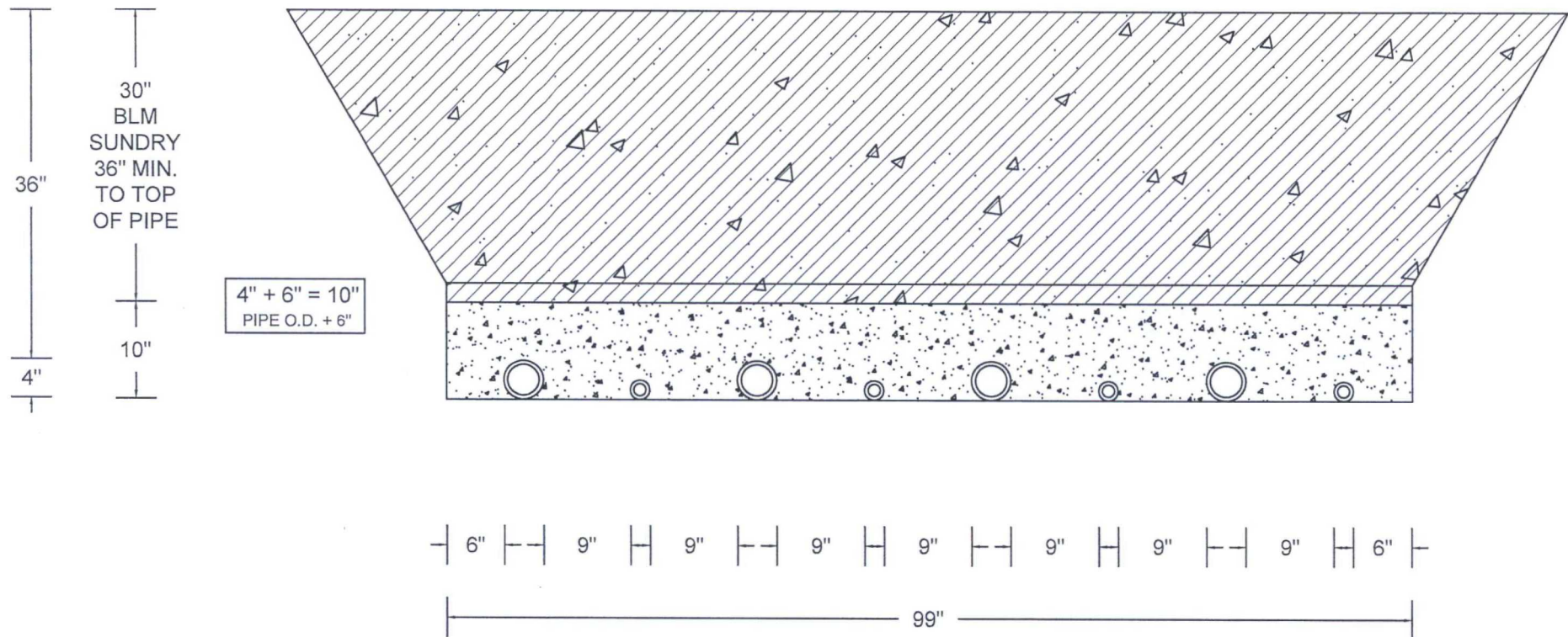
FLOW LINE WILL BE 4" COATED STEEL PIPE w/ AN OPERATING PRESSURE UP TO 1480# PSI.

GAS SUPPLY LINE WILL BE 2" STEEL PIPE w/ AN OPERATING PRESSURE UP TO 1100# PSI.

SOFT FILL DIRT OR SAND WITH NO ROCKS OR SOLID PARTICLES GREATER THAN 1" IN CIRCUMFERENCE

BACKFILL AROUND PIPE

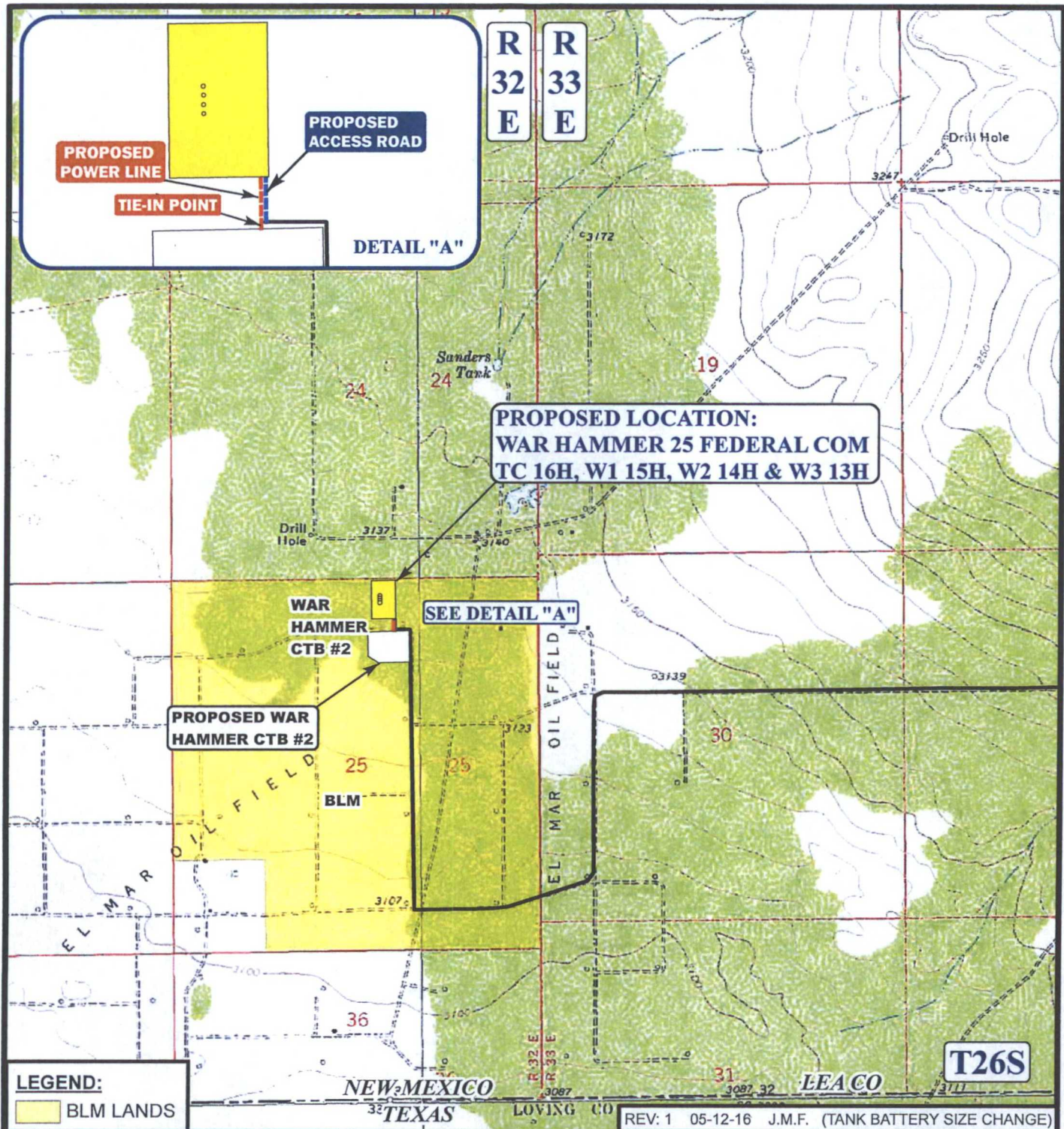
WAR HAMMER 25 FEDERAL COM W3 13H, WAR HAMMER 25 FEDERAL COM W2 14H, WAR HAMMER 25 FEDERAL COM W1 15H, WAR HAMMER 25 FEDERAL COM TC 16H



ALTERNATING 4" PIPE (FLOW LINE) + 2" PIPE (GAS LIFT)

6" CLEARANCE AT BOTH ENDS

9" CLEARANCE BETWEEN EACH PIPE



APPROXIMATE TOTAL POWER LINE DISTANCE = 183' +/-

*PARCEL DATA SHOWN HAS BEEN OBTAINED FROM VARIOUS SOURCES AND SHOULD BE USED FOR MAPPING, GRAPHIC AND PLANNING PURPOSES ONLY. NO WARRANTY IS MADE BY UTAH ENGINEERING & LAND SURVEYING (UELS) FOR ACCURACY OF THE PARCEL DATA.

SCALE: 1" = 2000'

DRAWN BY: L.S.

DATE DRAWN: 01-08-14



ConocoPhillips

ConocoPhillips Company

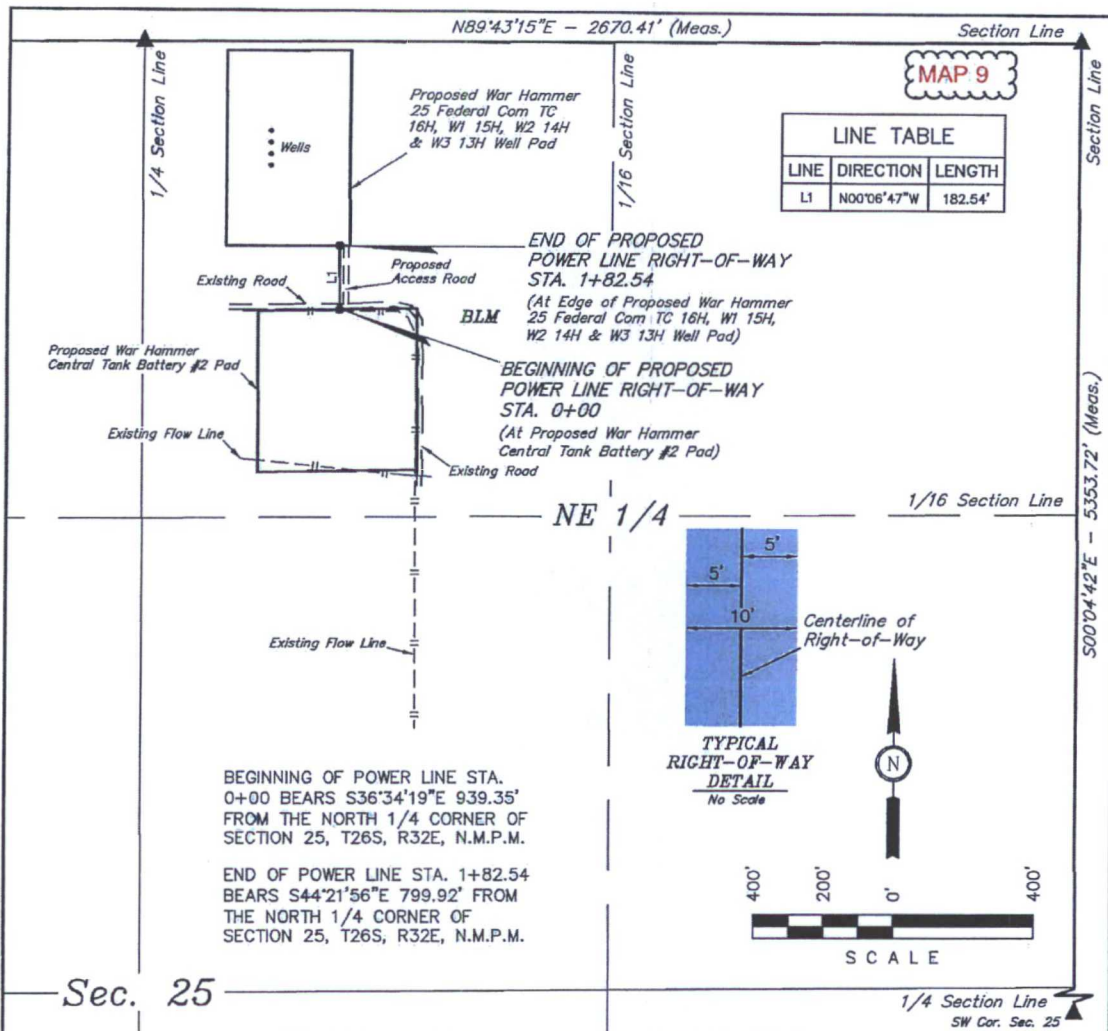
WAR HAMMER 25 FEDERAL COM
TC 16H, W1 15H, W2 14H & W3 13H
NW 1/4 NE 1/4, SECTION 25, T26S, R32E, N.M.P.M.
LEA COUNTY, NEW MEXICO

POWER LINE MAP

TOPO E



Corporate Office * 85 South 200 East
Vernal, UT 84078 * (435) 789-1017



POWER LINE RIGHT-OF-WAY DESCRIPTION

A 10' WIDE RIGHT-OF-WAY 5' ON EACH SIDE OF THE FOLLOWING DESCRIBED CENTERLINE.

BEGINNING AT A POINT IN THE NW 1/4 NE 1/4 OF SECTION 25, T26S, R32E, N.M.P.M., WHICH BEARS S36°34'19"E 939.35' FROM THE NORTH 1/4 CORNER OF SAID SECTION 25, THENCE N00°06'47"W 182.54' TO A POINT IN THE NW 1/4 NE 1/4 OF SAID SECTION 25, WHICH BEARS S44°21'56"E 799.92' FROM THE NORTH 1/4 CORNER OF SAID SECTION 25. THE SIDE LINES OF SAID DESCRIBED RIGHT-OF-WAY BEING SHORTENED OR ELONGATED TO MEET THE GRANTOR'S PROPERTY LINES. BASIS OF BEARINGS IS A G.P.S. OBSERVATION. CONTAINS 0.042 ACRES MORE OR LESS.

RIGHT-OF-WAY LENGTHS

DESCRIPTION	FEET	ACRES	RODS
TOTAL	182.54	0.042	11.06

▲ = SECTION CORNERS LOCATED.

CERTIFICATE OF PROFESSIONAL SURVEY

THIS IS TO CERTIFY THAT THE ABOVE WAS PREPARED FROM FIELD NOTES OF ACTUAL SURVEYS MADE BY ME OR UNDER MY SUPERVISION AND THAT THE SAME ARE TRUE AND CORRECT TO THE BEST OF MY KNOWLEDGE AND BELIEF.

12446
Robert J. Marshall
REGISTERED LAND SURVEYOR
REGISTRATION NO. 12446
STATE OF NEW MEXICO 03-03-14

NOTES:



Corporate Office * 85 South 200 East
Vernal, UT 84078 * (435) 789-1017

ConocoPhillips

ConocoPhillips Company

WAR HAMMER 25 FEDERAL COM
TC 16H, W1 15H, W2 14H & W3 13H
SECTION 25, T26S, R32E, N.M.P.M.
NW 1/4 NE 1/4

DRAWN BY: S.F.

SCALE: 1" = 400'

DATE: 02-24-14

REVISED:

POWER LINE R-O-W

FIGURE #8

MAP 10

War Hammer 25 Federal Com
W3 13H, W2 14H, W1 15H, TC 16H

166.02' proposed road
182.18' proposed pipelines
182.54' proposed power line

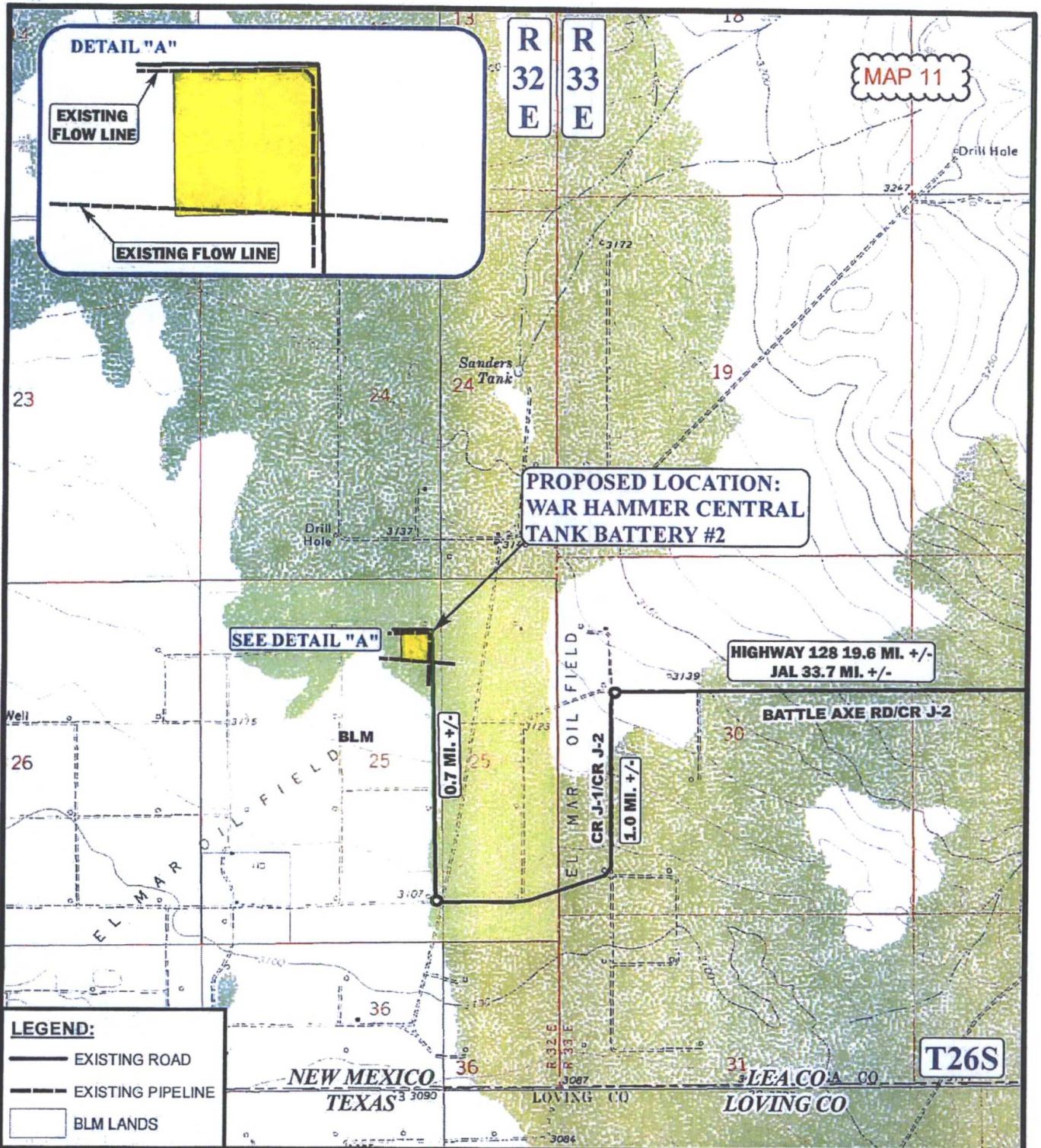
Central Tank
Battery 2

proposed
power line
1,106.67'

Survey

Google earth

Imagery Date: 4/7/2013 lat 32.017875° lon -103.626147° elev 3135 ft eye alt 6450 ft



*PARCEL DATA SHOWN HAS BEEN OBTAINED FROM VARIOUS SOURCES AND SHOULD BE USED FOR MAPPING, GRAPHIC AND PLANNING PURPOSES ONLY. NO WARRANTY IS MADE BY UINAH ENGINEERING & LAND SURVEYING (UELS) FOR ACCURACY OF THE PARCEL DATA.

SCALE: 1" = 2000' REVISION: 00-00-00

DRAWN BY: L.S.

DATE DRAWN: 02-24-14



ConocoPhillips

ConocoPhillips Company

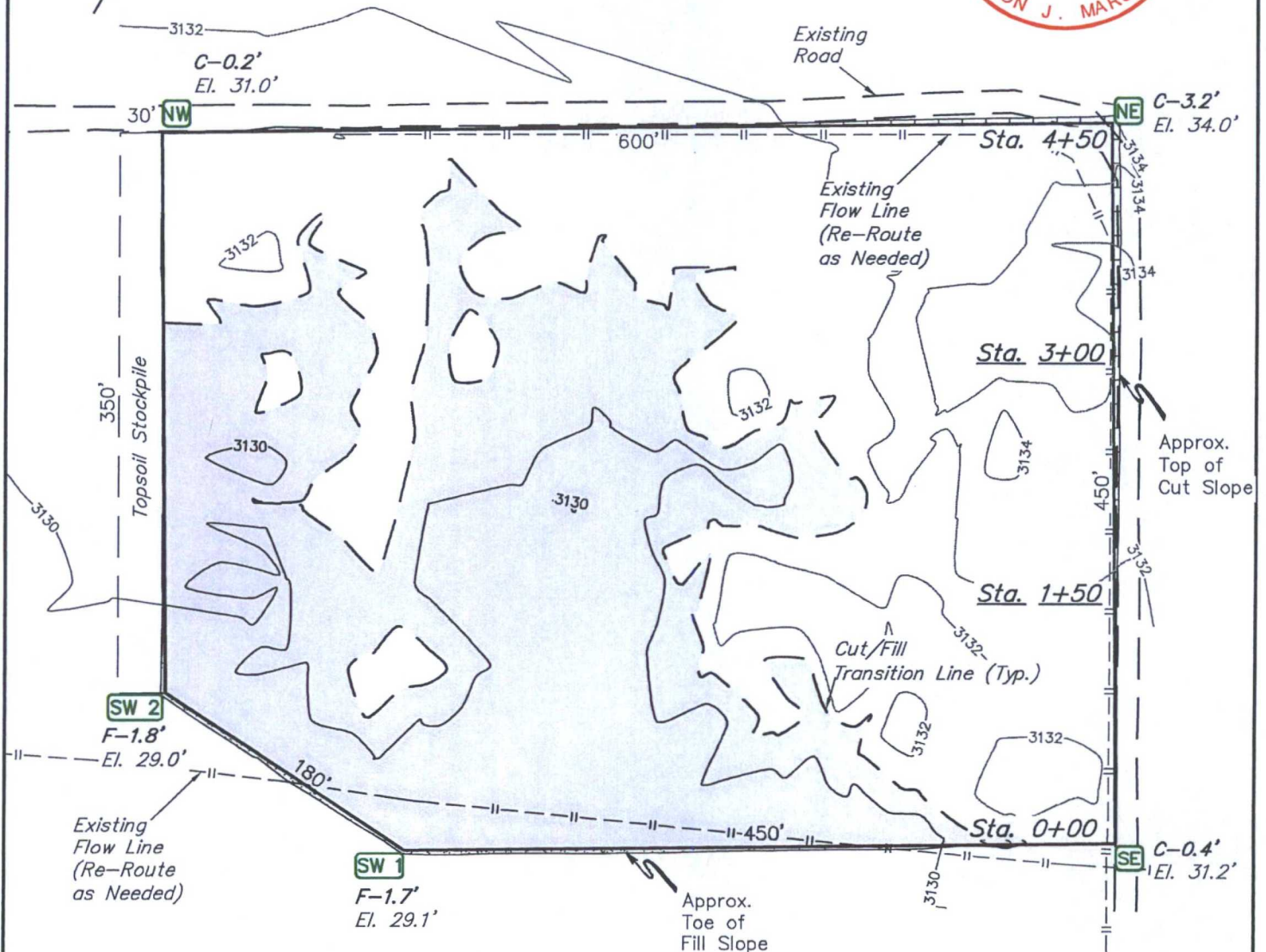
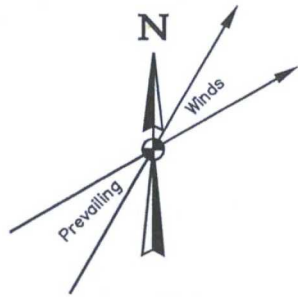
WAR HAMMER CENTRAL TANK BATTERY #2
SECTION 25, T26S, R32E, N.M.P.M.
NW 1/4 NE 1/4

ACCESS ROAD MAP

TOPO B



Corporate Office * 85 South 200 East
Vernal, UT 84078 * (435) 789-1017



FINISHED GRADE ELEVATION = 3130.8'

NOTES:

- Contours shown at 2' intervals.
- Underground utilities shown on this sheet are for visualization purposes only, actual locations to be determined prior to construction.

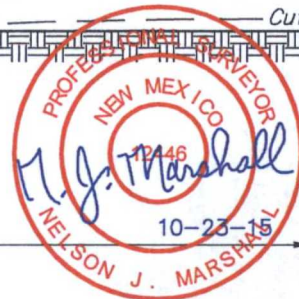
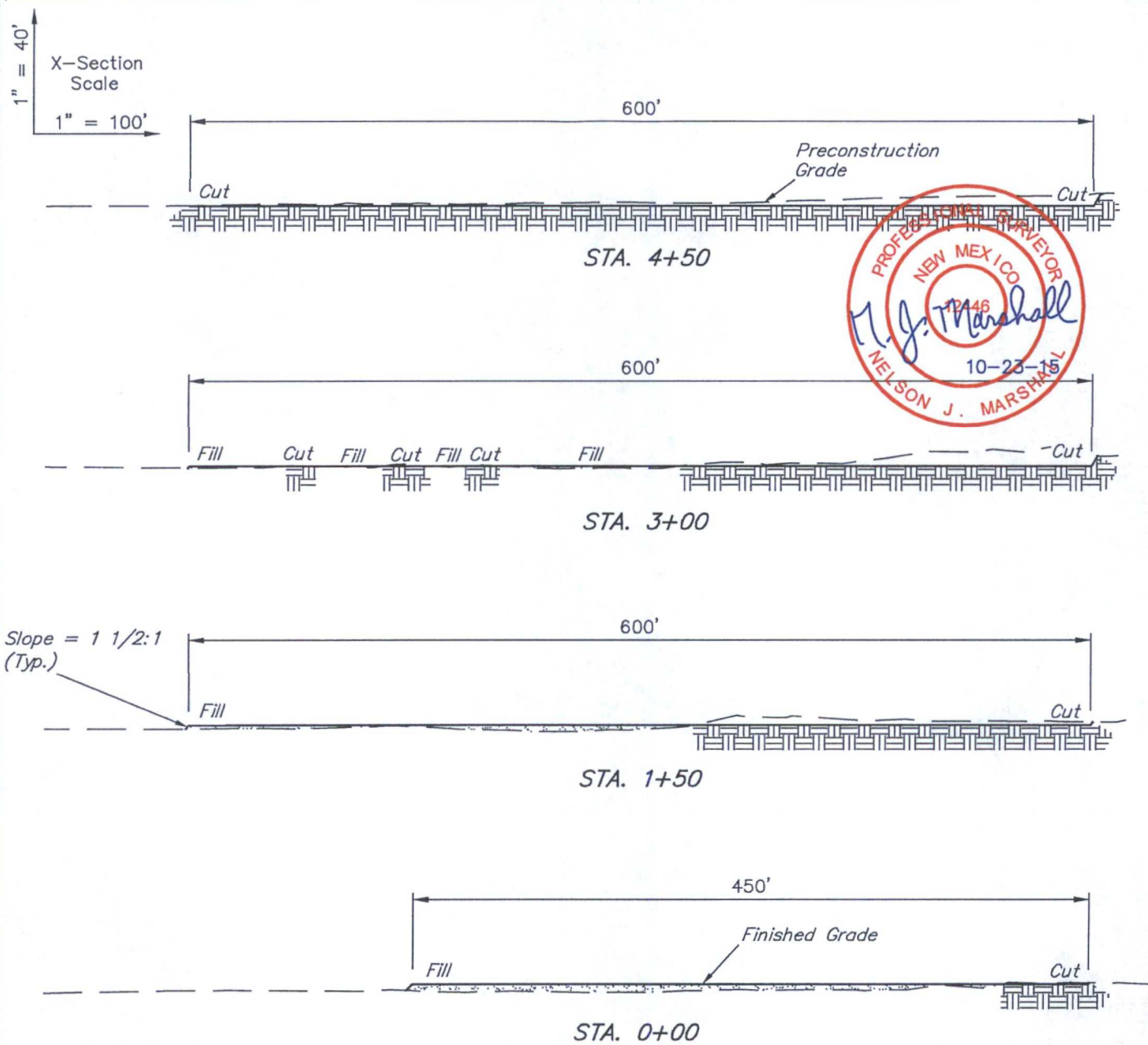
ConocoPhillips Company

**WAR HAMMER CENTRAL TANK BATTERY #2
NW 1/4 NE 1/4, SECTION 25, T26S, R32E, N.M.P.M.
LEA COUNTY, NEW MEXICO**



UELS, LLC
Corporate Office * 85 South 200 East
Vernal, UT 84078 * (435) 789-1017

DRAWN BY: C.A.G.	DATE DRAWN: 02-20-14
SCALE: 1" = 100'	REVISED: 10-16-15 C.D.
LOCATION LAYOUT	FIGURE #1



APPROXIMATE EARTHWORK QUANTITIES	
(3") TOPSOIL STRIPPING	2,470 Cu. Yds.
REMAINING LOCATION	5,420 Cu. Yds.
TOTAL CUT	7,890 Cu. Yds.
FILL	5,420 Cu. Yds.
EXCESS MATERIAL	2,470 Cu. Yds.
TOPSOIL	2,470 Cu. Yds.
EXCESS UNBALANCE (After Interim Rehabilitation)	0 Cu. Yds.

APPROXIMATE SURFACE DISTURBANCE AREAS		
	DISTANCE	ACRES
WELL SITE DISTURBANCE	NA	±6.343
30' WIDE PIPELINE R-O-W DISTURBANCE	±1118.27'	±0.770
30' WIDE POWER LINE R-O-W DISTURBANCE	±1106.67'	±0.762
TOTAL SURFACE USE AREA		±7.875

NOTES:

- Fill quantity includes 5% for compaction.

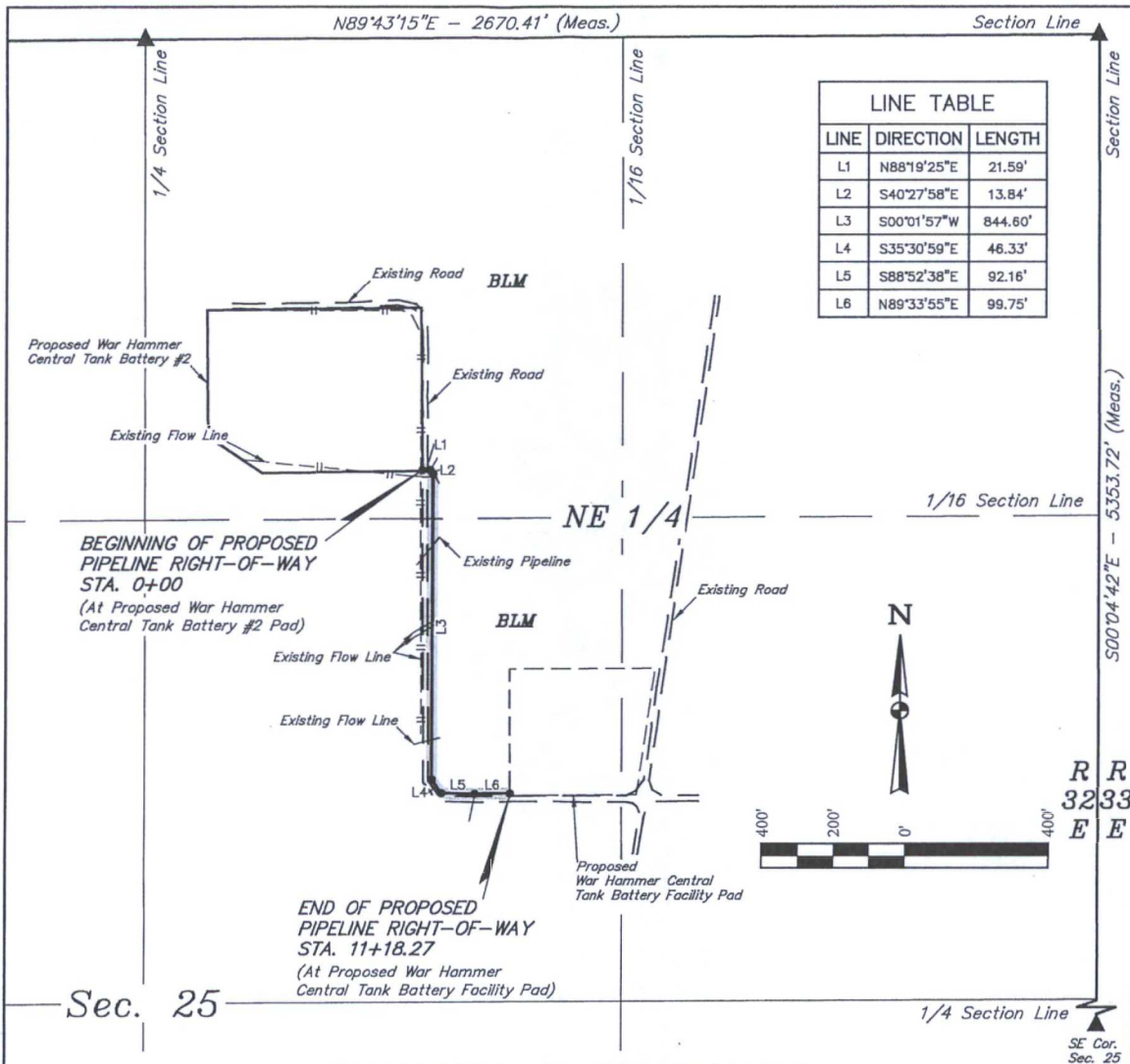
ConocoPhillips Company

WAR HAMMER CENTRAL TANK BATTERY #2
NW 1/4 NE 1/4, SECTION 25, T26S, R32E, N.M.P.M.
LEA COUNTY, NEW MEXICO

DRAWN BY: C.A.G.	DATE DRAWN: 02-20-14
SCALE: AS SHOWN	REVISED: 10-16-15 C.D.
TYPICAL CROSS SECTIONS	
FIGURE #2	



UELS, LLC
 Corporate Office * 85 South 200 East
 Vernal, UT 84078 * (435) 789-1017



ACREAGE / LENGTH TABLE			
DESCRIPTION	FEET	ACRES	RODS
(BLM NE 1/4)	1118.27	0.770	67.77

▲ = SECTION CORNERS LOCATED.

NOTES:
• Basis of bearing is a G.P.S. observation (Vertical Control Datum: NAVD88)

ConocoPhillips Company

WAR HAMMER CENTRAL TANK BATTERY #2
SECTION 25, T26S, R32E, N.M.P.M.
LEA COUNTY, NEW MEXICO

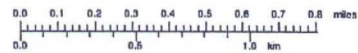
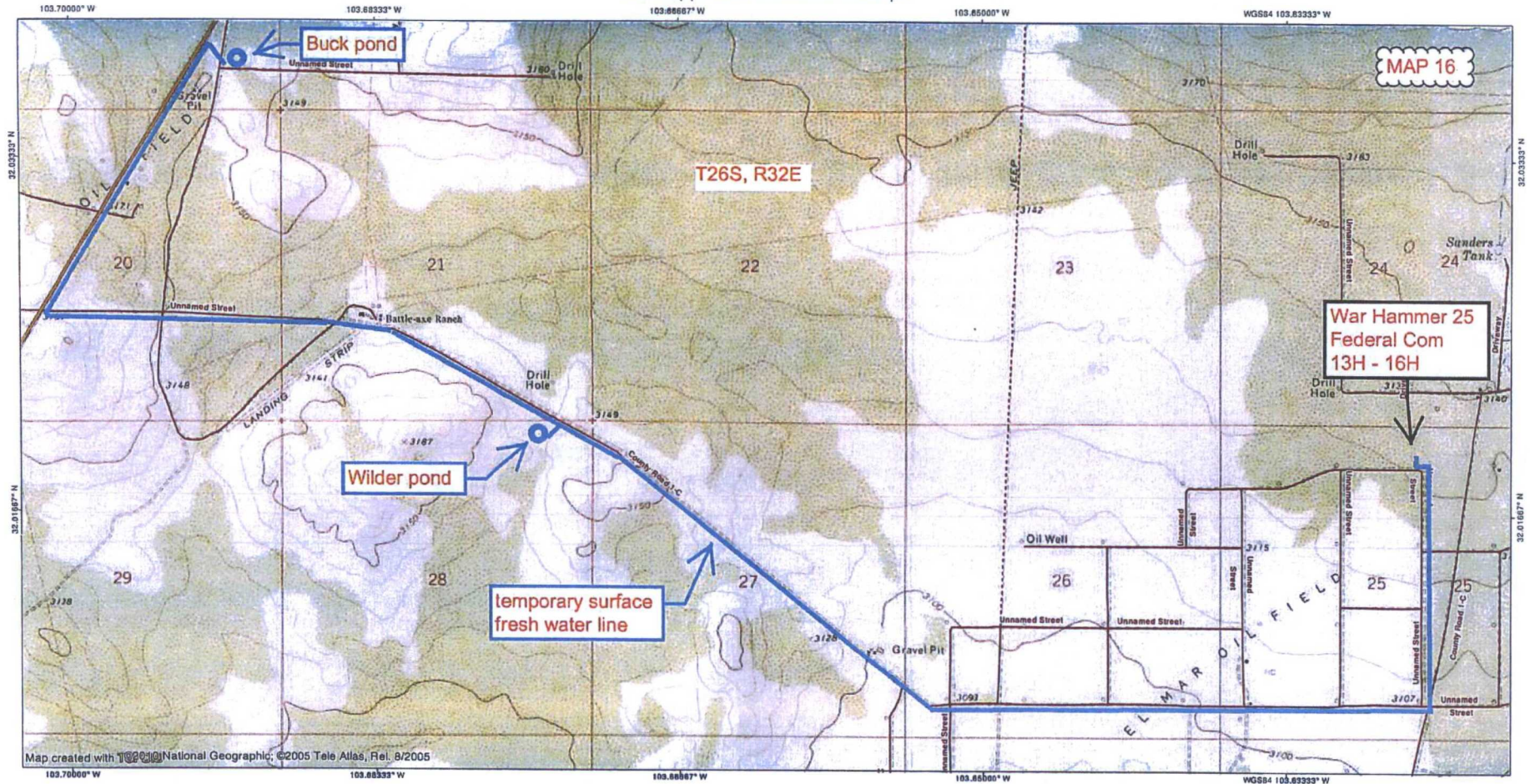
DRAWN BY: C.A.G.	DATE DRAWN: 02-20-14
SCALE: 1" = 400'	REVISED: 10-16-15 C.D.

PIPELINE R-O-W

U.S. ENGINEERING & LAND SURVEYING

UELS, LLC
Corporate Office * 85 South 200 East
Vernal, UT 84078 * (435) 789-1017

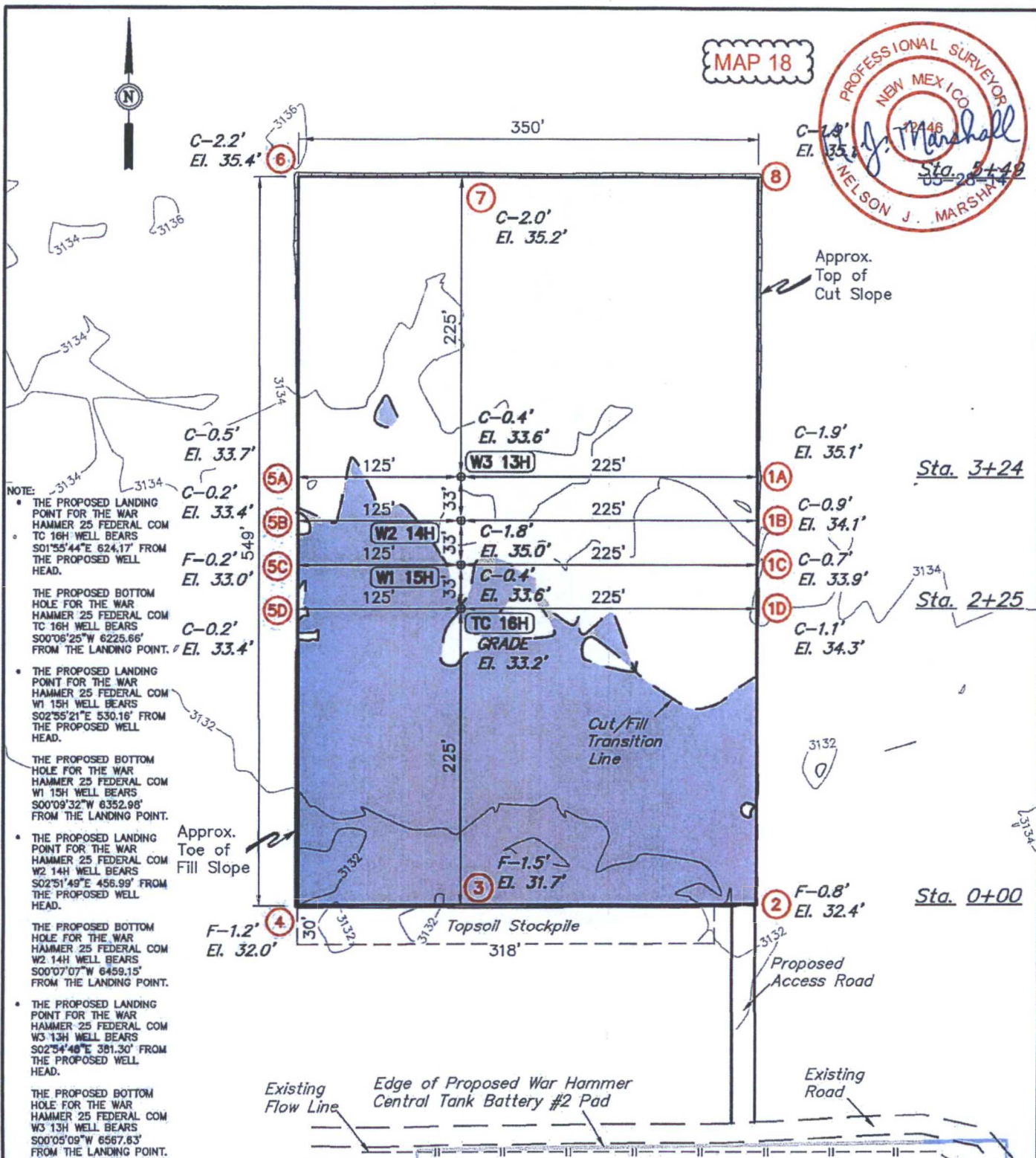
TOPO! map printed on 06/30/14 from "Untitled.tpo"



TN 11MN
7.5°
06/30/14



MAP 18



ELEV. UNGRADED GROUND AT TC 16H LOC. STAKE = 3133.2' FINISHED GRADE ELEV. AT TC 16H LOC. STAKE = 3133.2'

NOTES:

- Flare pit is to be located a min. of 100' from the well head.
- Underground utilities shown on this sheet are for visualization purposes only, actual locations to be determined prior to construction.

ConocoPhillips

ConocoPhillips Company

**WAR HAMMER 25 FEDERAL COM
TC 16H, W1 15H, W2 14H & W3 13H
SECTION 25, T26S, R32E, N.M.P.M.
NW 1/4 NE 1/4**

DRAWN BY: C.A.G.

SCALE: 1" = 100'

DATE: 02-16-14

REVISED: 05-23-14 S.F.



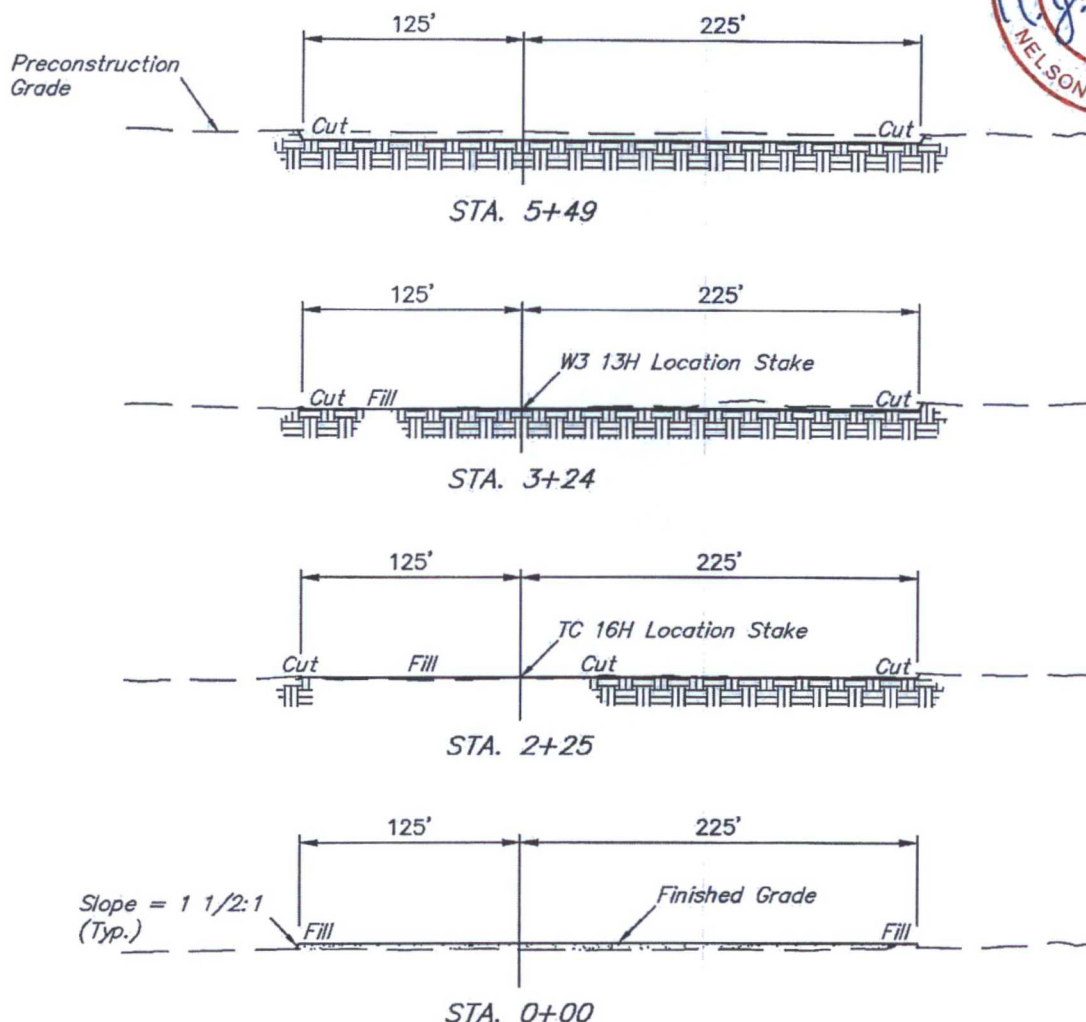
Corporate Office * 85 South 200 East
Vernal, UT 84078 * (435) 789-1017

LOCATION LAYOUT

FIGURE #1

1" = 40'
X-Section
Scale
1" = 100'

MAP 19



APPROXIMATE EARTHWORK QUANTITIES		APPROXIMATE SURFACE DISTURBANCE AREAS		
(3") TOPSOIL STRIPPING	1,810 Cu. Yds.		DISTANCE	ACRES
REMAINING LOCATION	3,490 Cu. Yds.	WELL SITE DISTURBANCE	NA	±4.486
TOTAL CUT	5,300 Cu. Yds.	ACCESS ROAD DISTURBANCE	±166.02'	±0.076
FILL	3,490 Cu. Yds.	FLOW LINE DISTURBANCE	±182.18'	±0.042
EXCESS MATERIAL	1,810 Cu. Yds.	POWER LINE DISTURBANCE	±182.54'	±0.042
TOPSOIL	1,810 Cu. Yds.	TOTAL DISTURBANCE	±530.74'	±4.646
EXCESS UNBALANCE (After Interim Rehabilitation)	0 Cu. Yds.			

NOTES:

- Fill quantity includes 5% for compaction.
- Topsoil should not be stripped below finished grade on substructure area.

ConocoPhillips

ConocoPhillips Company

WAR HAMMER 25 FEDERAL COM
TC 16H, W1 15H, W2 14H & W3 13H
SECTION 25, T26S, R32E, N.M.P.M.
NW 1/4 NE 1/4

DRAWN BY: C.A.G.

SCALE: AS SHOWN

DATE: 02-16-14

REVISED:



Corporate Office * 85 South 200 East
Vernal, UT 84078 * (435) 789-1017

TYPICAL CROSS SECTIONS

FIGURE #2



MAP 20



- W3 13H
- W2 14H
- W1 15H
- TC 16H

Topsoil Stockpile

700' X 600'
Archaeological Survey
Boundary

Proposed
Access Road

Existing
Flow Line

Edge of Proposed War Hammer
Central Tank Battery #2 Pad

Existing
Road

NOTES:

ConocoPhillips

ConocoPhillips Company

WAR HAMMER 25 FEDERAL COM
TC 16H, W1 15H, W2 14H & W3 13H
SECTION 25, T26S, R32E, N.M.P.M.
NW 1/4 NE 1/4



Corporate Office * 85 South 200 East
Vernal, UT 84078 * (435) 789-1017

DRAWN BY: C.A.G.

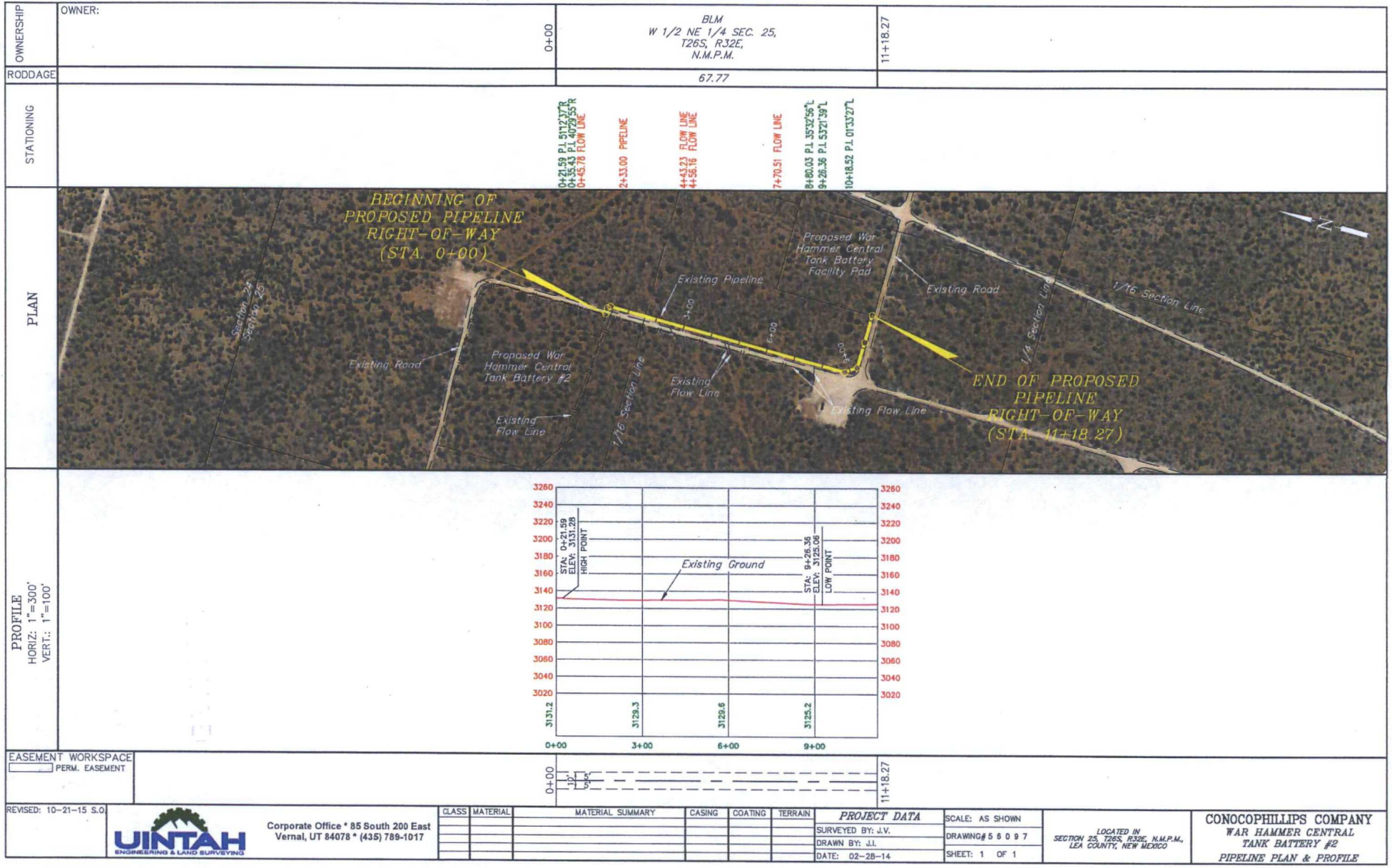
SCALE: 1" = 100'


DATE: 02-16-14

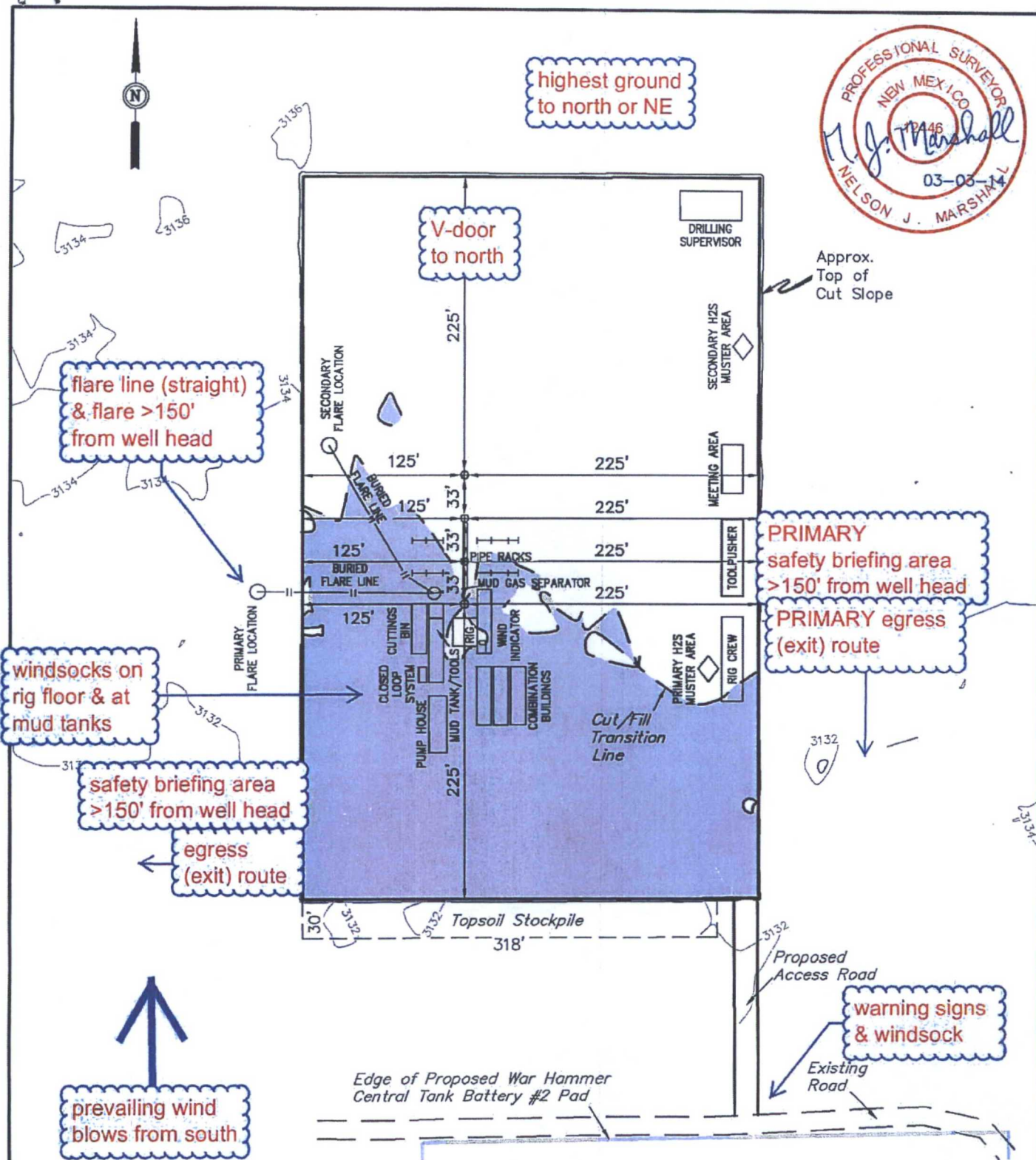
REVISED:

ARCHAEOLOGICAL SURVEY
BOUNDARY

FIGURE #5



REVISED: 10-21-15 S.O.	 <div>Corporate Office * 85 South 200 East Vernal, UT 84078 * (435) 789-1017</div>	<table><thead><tr><th>CLASS</th><th>MATERIAL</th><th>MATERIAL SUMMARY</th><th>CASING</th><th>COATING</th><th>TERRAIN</th></tr></thead><tbody><tr><td></td><td></td><td></td><td></td><td></td><td></td></tr><tr><td></td><td></td><td></td><td></td><td></td><td></td></tr><tr><td></td><td></td><td></td><td></td><td></td><td></td></tr><tr><td></td><td></td><td></td><td></td><td></td><td></td></tr></tbody></table>	CLASS	MATERIAL	MATERIAL SUMMARY	CASING	COATING	TERRAIN																									<table><thead><tr><th colspan="2">PROJECT DATA</th></tr></thead><tbody><tr><td>SURVEYED BY: J.V.</td><td>SCALE: AS SHOWN</td></tr><tr><td>DRAWN BY: J.L.</td><td>DRAWING# 56097</td></tr><tr><td>DATE: 02-28-14</td><td>SHEET: 1 OF 1</td></tr></tbody></table>	PROJECT DATA		SURVEYED BY: J.V.	SCALE: AS SHOWN	DRAWN BY: J.L.	DRAWING# 56097	DATE: 02-28-14	SHEET: 1 OF 1	<div>LOCATED IN SECTION 25, T26S, R32E, N.M.P.M., LEA COUNTY, NEW MEXICO</div> <div>CONOCOPHILLIPS COMPANY WAR HAMMER CENTRAL TANK BATTERY #2 PIPELINE PLAN & PROFILE</div>
CLASS	MATERIAL	MATERIAL SUMMARY	CASING	COATING	TERRAIN																																					
PROJECT DATA																																										
SURVEYED BY: J.V.	SCALE: AS SHOWN																																									
DRAWN BY: J.L.	DRAWING# 56097																																									
DATE: 02-28-14	SHEET: 1 OF 1																																									



NOTES:

- Flare pit is to be located a min. of 160' from the well head.

ConocoPhillips

ConocoPhillips Company

WAR HAMMER 25 FEDERAL COM
TC 16H, W1 15H, W2 14H & W3 13H
SECTION 25, T26S, R32E, N.M.P.M.
NW 1/4 NE 1/4

DRAWN BY: C.A.G.

SCALE: 1" = 100'

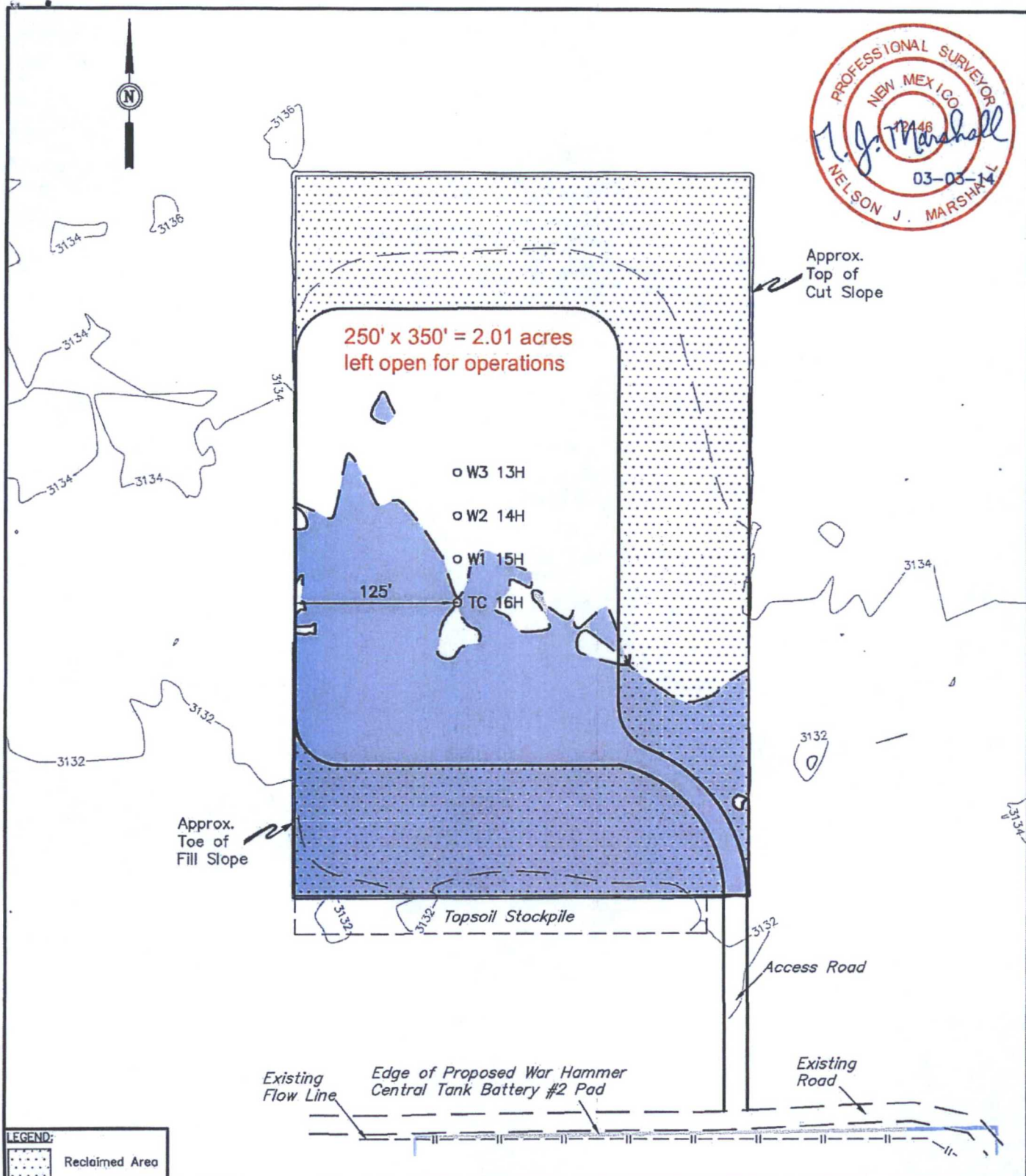
DATE: 02-16-14

REVISED:

HYDROGEN SULFIDE DIAGRAM



Corporate Office * 85 South 200 East
Vernal, UT 84078 * (435) 789-1017



LEGEND:
 [Stippled Area] Reclaimed Area

NOTES:



Corporate Office * 85 South 200 East
 Vernal, UT 84078 * (435) 789-1017

ConocoPhillips

ConocoPhillips Company

WAR HAMMER 25 FEDERAL COM
 TC 16H, W1 15H, W2 14H & W3 13H
 SECTION 25, T26S, R32E, N.M.P.M.
 NW 1/4 NE 1/4

DRAWN BY: C.A.G.

SCALE: 1" = 100'

DATE: 02-16-14

REVISED:

RECLAMATION DIAGRAM

FIGURE #4