

DISTRICT I
1625 N. French Dr., Hobbs, NM 88240

DISTRICT II
1301 W. Grand Avenue, Artesia, NM 88210

DISTRICT III
1000 Rio Brazos Rd., Aztec, NM 87410

DISTRICT IV
1220 S. St. Francis Dr., Santa Fe, NM 87505

HOBBS OCD
MAY 23 2016
RECEIVED

State of New Mexico
Energy, Minerals and Natural Resources Department

Form C-102
Revised October 15, 2009

Submit one copy to appropriate
District Office

OIL CONSERVATION DIVISION
1220 South St. Francis Dr.
Santa Fe, New Mexico 87505

WELL LOCATION AND ACREAGE DEDICATION PLAT

☐ AMENDED REPORT

API Number 30-025-39887	Pool Code 27220	Pool Name Gem; Bone Spring
Property Code 300556	Property Name STATE HH COM	Well Number 3
OGRID No. 162683	Operator Name CIMAREX ENERGY CO. OF COLORADO	Elevation 3570'

Surface Location

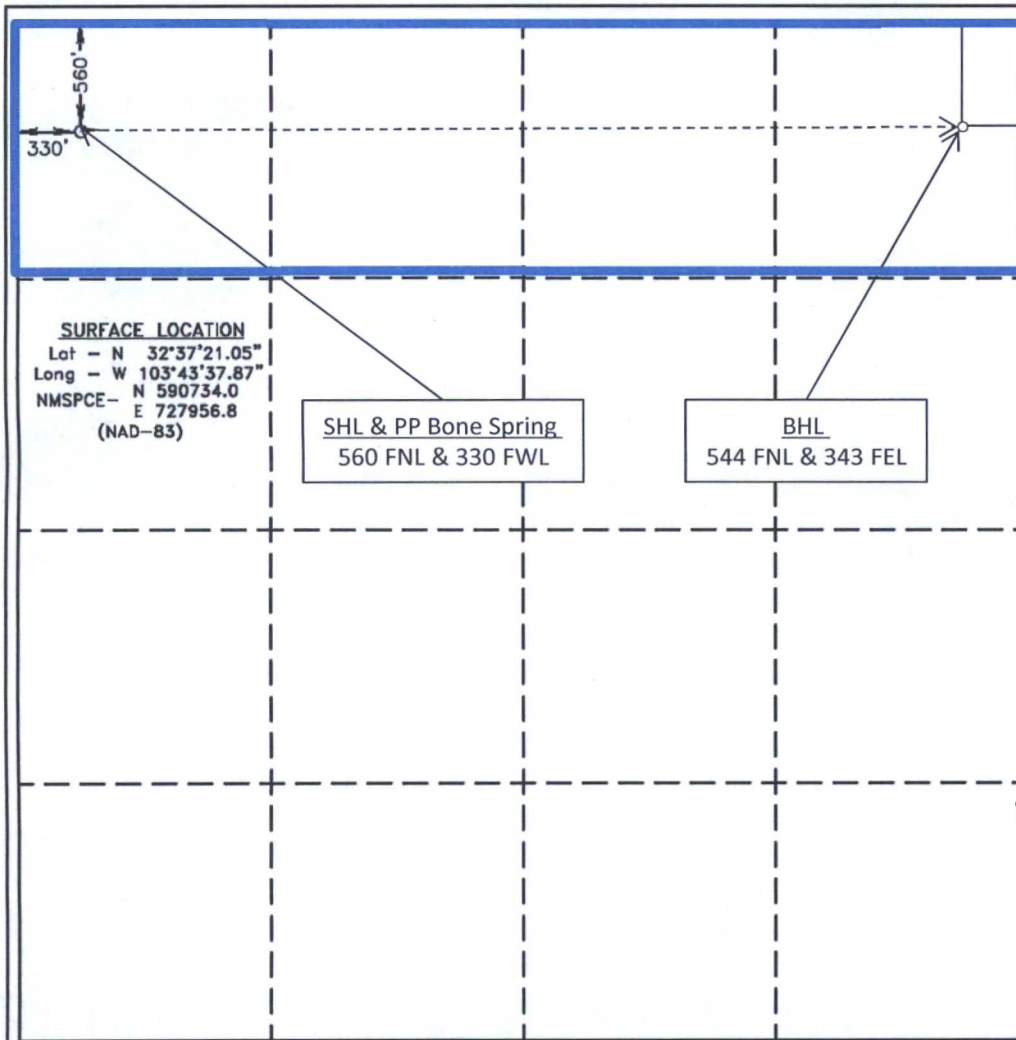
UL or lot No. D	Section 36	Township 19 S	Range 32 E	Lot Idn	Feet from the 560	North/South line NORTH	Feet from the 330	East/West line WEST	County LEA
--------------------	---------------	------------------	---------------	---------	----------------------	---------------------------	----------------------	------------------------	---------------

Bottom Hole Location If Different From Surface

UL or lot No. A	Section 36	Township 19 S	Range 32 E	Lot Idn	Feet from the 544	North/South line NORTH	Feet from the 343	East/West line EAST	County LEA
--------------------	---------------	------------------	---------------	---------	----------------------	---------------------------	----------------------	------------------------	---------------

Dedicated Acres 160	Joint or Infill	Consolidation Code P	Order No.
------------------------	-----------------	-------------------------	-----------

NO ALLOWABLE WILL BE ASSIGNED TO THIS COMPLETION UNTIL ALL INTERESTS HAVE BEEN CONSOLIDATED
OR A NON-STANDARD UNIT HAS BEEN APPROVED BY THE DIVISION



OPERATOR CERTIFICATION

I hereby certify that the information contained herein is true and complete to the best of my knowledge and belief, and that this organization either owns a working interest or unleased mineral interest in the land including the proposed bottom hole location or has a right to drill this well at this location pursuant to a contract with an owner of such a mineral or working interest, or to a voluntary pooling agreement or a compulsory pooling order heretofore entered by the division.

Hope Knauls 5/19/2016
Signature Date

Hope Knauls
Printed Name

SURVEYOR CERTIFICATION

I hereby certify that the well location shown on this plat was plotted from field notes of actual surveys made by me or under my supervision, and that the same is true and correct to the best of my belief.

Date Surveyed
Signature Seal of Professional Surveyor
7977

Certificate No. Gary L. Jones 7977

BASIN SURVEYS