

DISTRICT I

1825 N. French Dr., Hobbs, NM 88240
Phone (505) 383-8681 Fax: (505) 383-0720

DISTRICT II

1301 W. Grand Avenue, Ariseno, NM 86210
Phone (505) 748-1283 Fax: (505) 748-9728

DISTRICT III

1090 Rio Brazos Rd., Aztec, NM 87410
Phone (505) 354-6178 Fax: (505) 354-6478

DISTRICT IV

1820 S. St. Francis Dr., Santa Fe, NM 87505
Phone (505) 478-5400 Fax: (505) 478-5482State of New Mexico
Energy, Minerals and Natural Resources Department

Form C-102

Revised August 1, 2011

Submit one copy to appropriate
District Office

OIL CONSERVATION DIVISION

1220 South St. Francis Dr.
Santa Fe, New Mexico 87505

WELL LOCATION AND ACREAGE DEDICATION PLAT

☐ AMENDED REPORT

API Number 30-025-40556	Pool Code 28434	Pool Name Grama Ridge; Bone Spring, North
Property Code 316044	Property Name SITKA "BSI" STATE COM	Well Number 1H
OGRID No. 229137	Operator Name COG OPERATING, LLC	Elevation 3708'

Surface Location

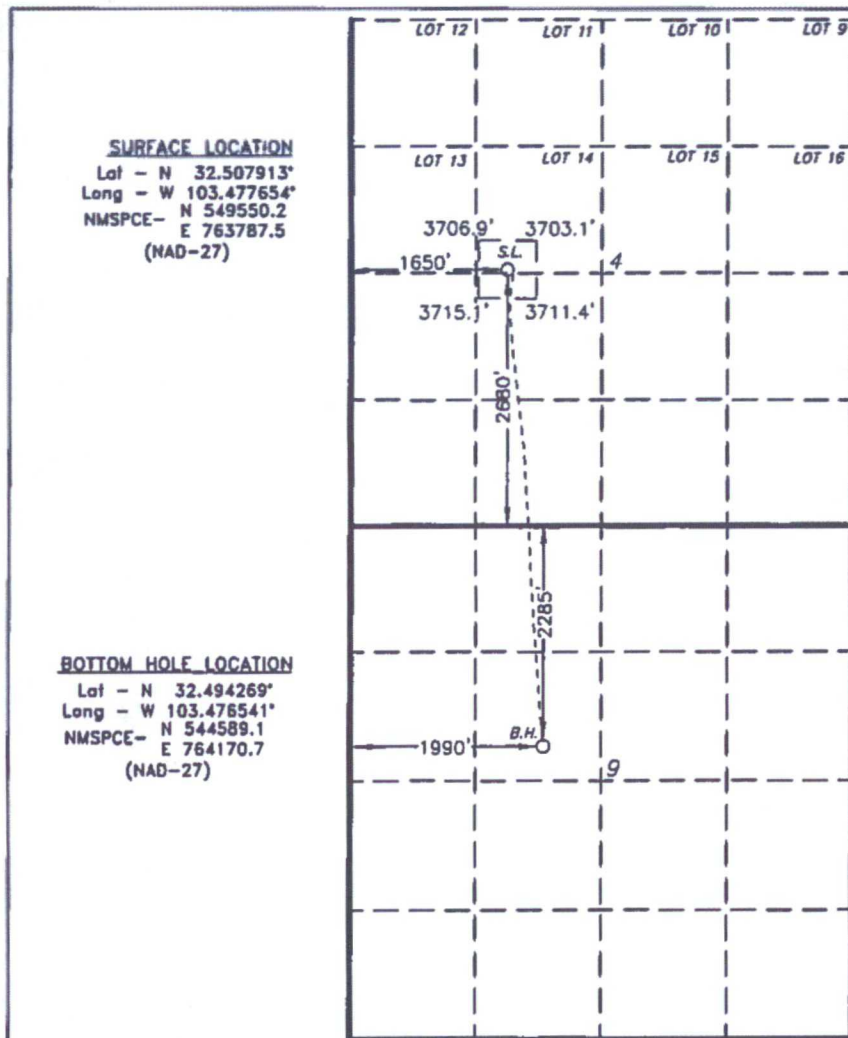
UL or lot No.	Section	Township	Range	Lot Idn	Feet from the	North/South line	Feet from the	East/West line	County
LOT 14	4	21 S	34 E		2680	SOUTH	1650	WEST	LEA

Bottom Hole Location If Different From Surface

UL or lot No.	Section	Township	Range	Lot Idn	Feet from the	North/South line	Feet from the	East/West line	County
F	9	21 S	34 E		2285	NORTH	1990	WEST	LEA

Dedicated Acres	Joint or Infill	Consolidation Code	Order No.
160			

NO ALLOWABLE WILL BE ASSIGNED TO THIS COMPLETION UNTIL ALL INTERESTS HAVE BEEN CONSOLIDATED
OR A NON-STANDARD UNIT HAS BEEN APPROVED BY THE DIVISION



OPERATOR CERTIFICATION

I hereby certify that the information contained herein is true and complete to the best of my knowledge and belief, and that this organization either owns a working interest or unleased mineral interest in the land including the proposed bottom hole location or has a right to drill this well at this location pursuant to a contract with an owner of such a mineral or working interest, or to a voluntary pooling agreement or a compulsory pooling order heretofore entered by the division.

Stormi Davis 7/22/16
Signature Date

Stormi Davis

Printed Name

sdavis@concho.com

Email Address

SURVEYOR CERTIFICATION

I hereby certify that the well location shown on this plat was plotted from field notes of actual surveys made by me or under my supervision, and that the same is true and correct to the best of my belief.

GARY L. JONES
Date Surveyed
Signature & Seal of
Professional Surveyor
W. L. JONES

Certificate No. Gary L. Jones 7977

BASIN SURVEYS 26507