

District I  
1625 N. French Dr., Hobbs, NM 88240  
Phone: (575) 393-6161 Fax: (575) 393-0720  
District II  
811 S. First St., Artesia, NM 88210  
Phone: (575) 748-1283 Fax: (575) 748-9720  
District III  
1000 Rio Brazos Road, Aztec, NM 87410  
Phone: (505) 334-6178 Fax: (505) 334-6170  
District IV  
1220 S. St. Francis Dr., Santa Fe, NM 87505  
Phone: (505) 476-3460 Fax: (505) 476-3462

State of New Mexico  
Energy, Minerals & Natural Resources Department  
OIL CONSERVATION DIVISION  
1220 South St. Francis Dr.  
Santa Fe, NM 87505

Form C-102  
Revised August 1, 2011  
Submit one copy to appropriate  
District Office

☐ AMENDED REPORT

WELL LOCATION AND ACREAGE DEDICATION PLAT

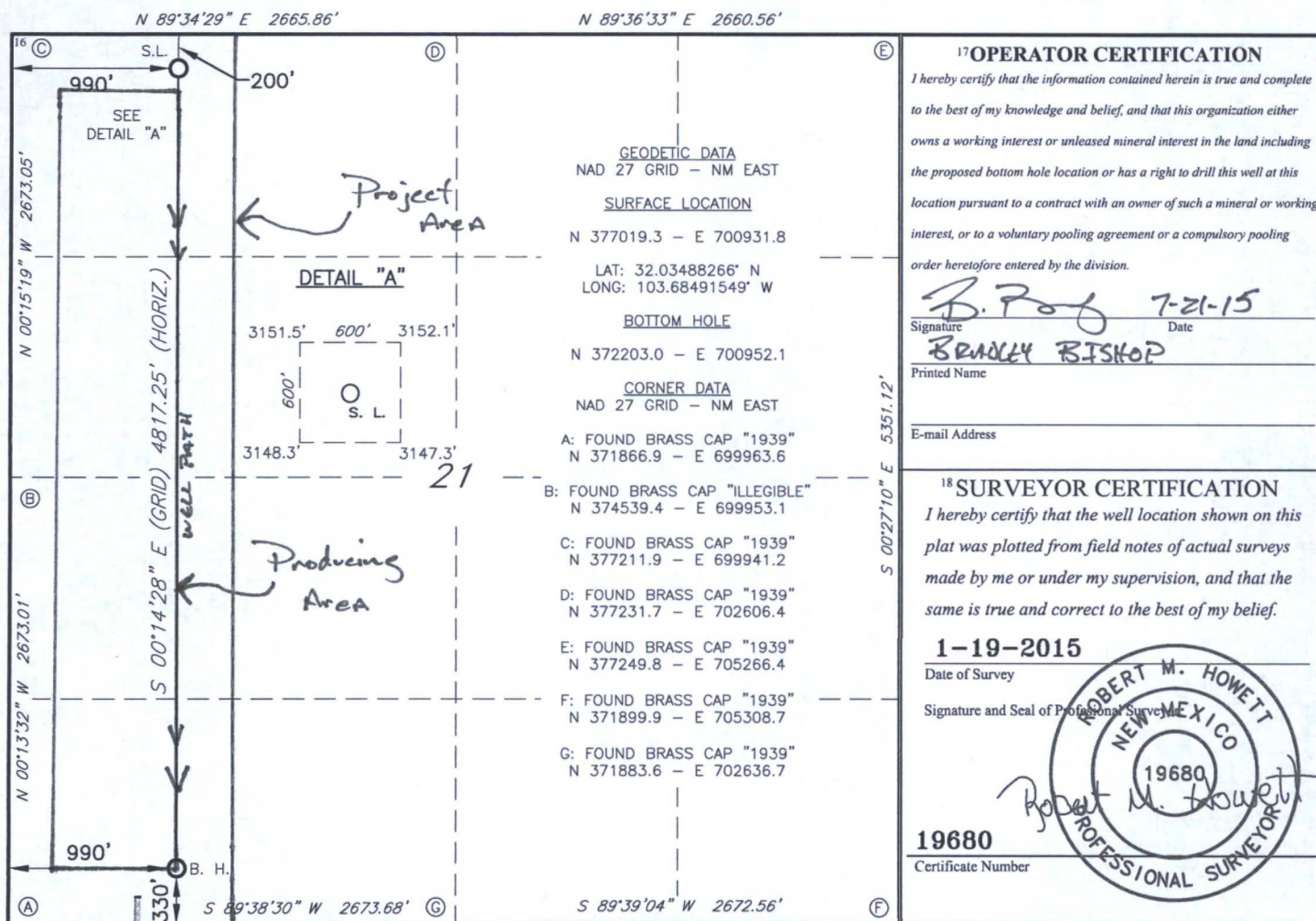
<sup>1</sup> API Number <b>30-025-43427</b>	<sup>2</sup> Pool Code <b>97838</b>	<sup>3</sup> Pool Name <b>JENNINGS UPPER SHALE</b>
<sup>4</sup> Property Code <b>316812</b>	<sup>5</sup> Property Name <b>RED HILLS WEST 21 A2DM FED COM</b>	
<sup>7</sup> OGRID NO. <b>14744</b>	<sup>8</sup> Operator Name <b>MEWBOURNE OIL COMPANY</b>	<sup>6</sup> Well Number <b>2H</b>
		<sup>9</sup> Elevation <b>3150'</b>

<sup>10</sup> Surface Location									
UL or lot no. <b>D</b>	Section <b>21</b>	Township <b>26S</b>	Range <b>32E</b>	Lot Idn	Feet from the <b>200</b>	North/South line <b>NORTH</b>	Feet From the <b>990</b>	East/West line <b>WEST</b>	County <b>LEA</b>

<sup>11</sup> Bottom Hole Location If Different From Surface									
UL or lot no. <b>M</b>	Section <b>21</b>	Township <b>26S</b>	Range <b>32E</b>	Lot Idn	Feet from the <b>330</b>	North/South line <b>SOUTH</b>	Feet from the <b>990</b>	East/West line <b>WEST</b>	County <b>LEA</b>

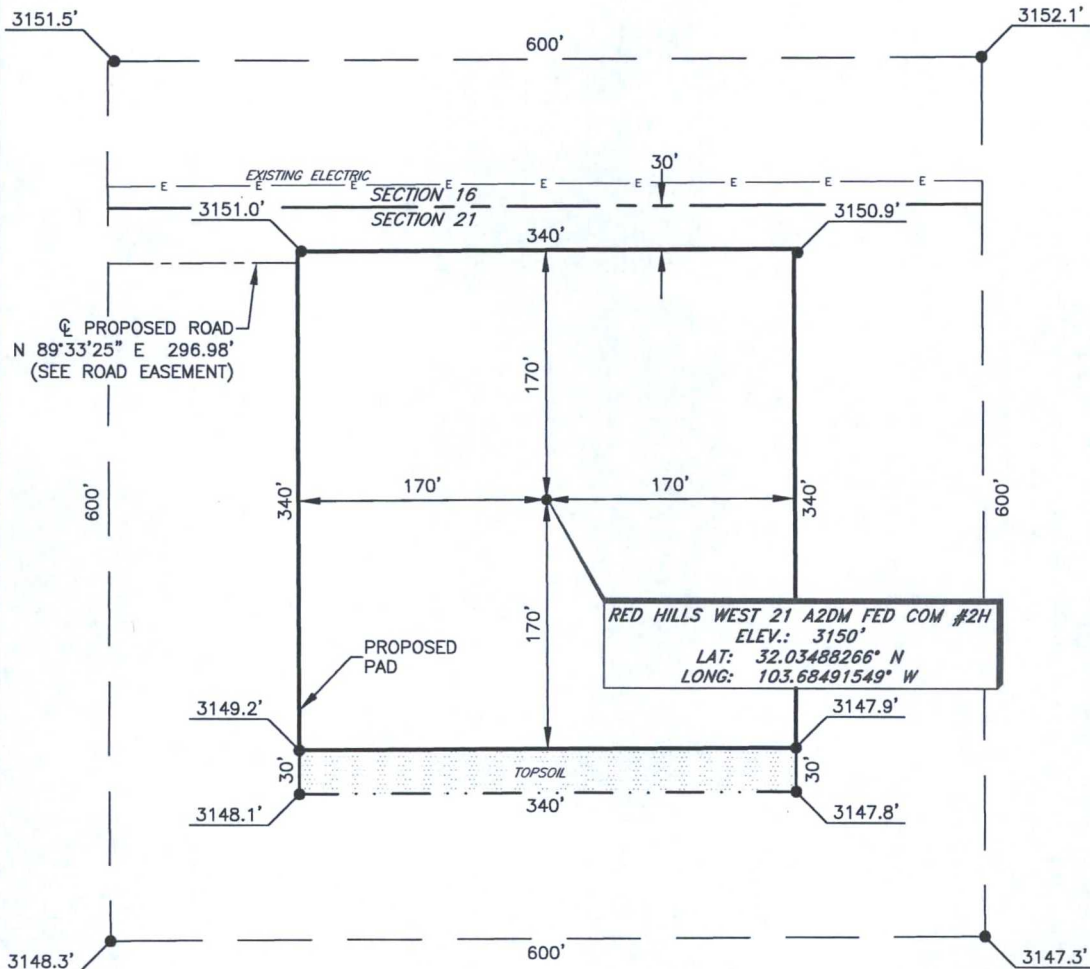
<sup>12</sup> Dedicated Acres <b>160</b>	<sup>13</sup> Joint or Infill	<sup>14</sup> Consolidation Code	<sup>15</sup> Order No.
---	-------------------------------	----------------------------------	-------------------------

No allowable will be assigned to this completion until all interest have been consolidated or a non-standard unit has been approved by the division.



# MEWBOURNE OIL COMPANY

RED HILLS WEST 21 A2DM FED COM #2H  
(200' FNL & 990' FWL)  
SECTION 21, T26S, R32E  
N. M. P. M., LEA COUNTY, NEW MEXICO



## DIRECTIONS TO LOCATION

From the intersection of CR-J1 (Orla Hwy.) and CR-J2 (Battle Axe Rd.)  
Go Northeast on CR-1 approx. 1.0 miles to a lease road on the right;  
Turn right and go East approx. 0.4 miles to lease road on right;  
Turn right and go South approx. 0.1 miles to proposed road on left;  
Turn left and go East approx. 300 feet to proposed well on right.

SCALE: 1" = 100'  
0 50 100

BEARINGS ARE  
NAD 27 GRID - NM EAST  
DISTANCES ARE GROUND

Firm No.: TX 10193838 NM 4655451

Copyright 2014 - All Rights Reserved

NO.	REVISION	DATE
JOB NO.:	LS140583	
DWG. NO.:	140583PAD	

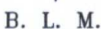
# RRC

308 W. BROADWAY ST., HOBBS, NM 88240 (575) 964-8200

SCALE: 1" = 100'
DATE: 1-19-2015
SURVEYED BY: BK/AA
DRAWN BY: CMJ
APPROVED BY: RMH
SHEET : 1 OF 1



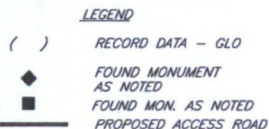
N. M. P. M., LEA CO., NEW MEXICO



A strip of land 30 feet wide, being 296.98 feet or 17.999 rods in length lying in Section 21, Township 26 South, Range 32 East, N. M. P. M., Lea County, New Mexico, being 15 feet left and 15 feet right of the following described survey of a centerline across B. L. M. land;

Thence N 89°33'25" E, 296.98 feet to Engr. Sta. 2+96.98, the End of Survey, a point which bears N 17°00'06" E, 2762.38 feet from a brass cap, illegible, found for the West quarter corner of Section 21.

NW 1/4 NW 1/4      17.999 Rods      0.204 Acres



Robert M. Howett



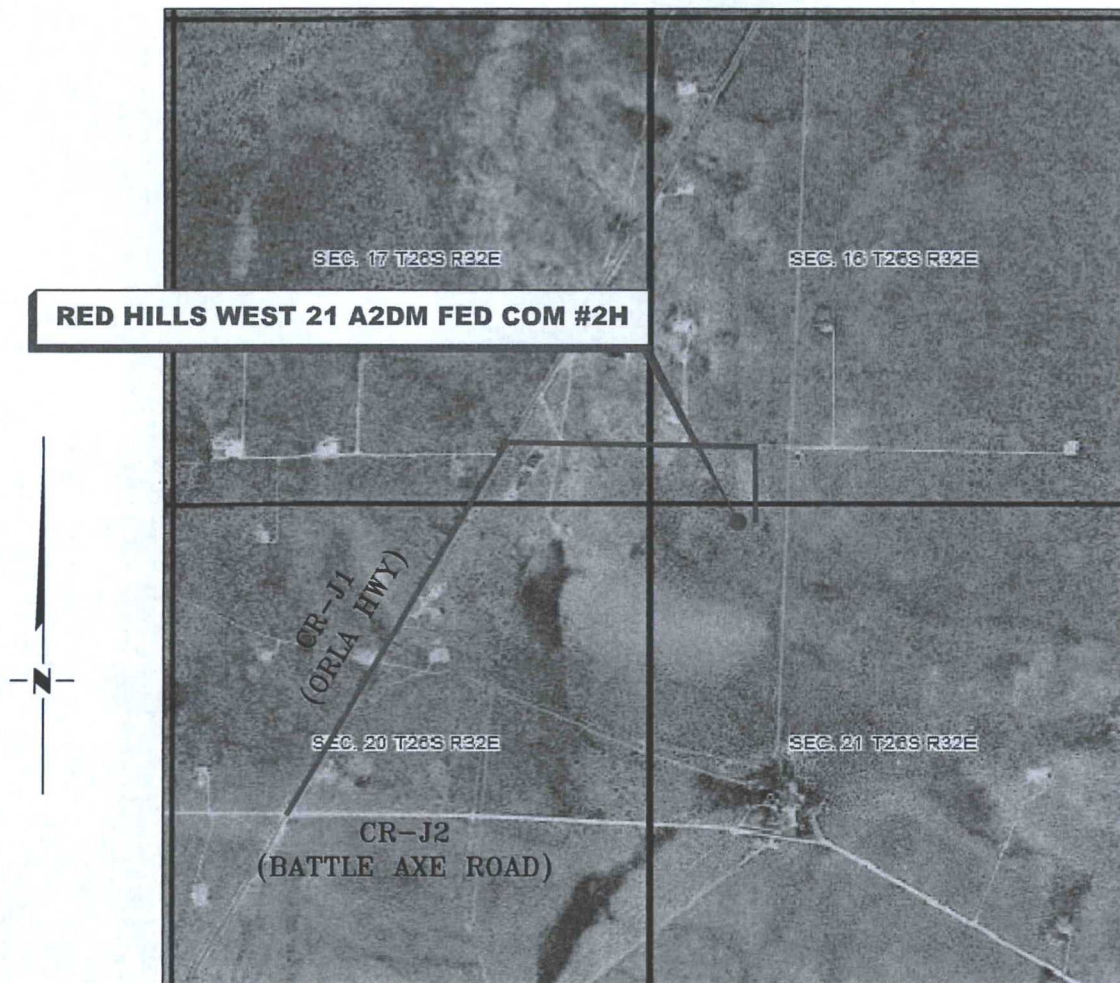
Copyright 2014 – All Rights Reserved

# RRC

SCALE: 1" = 1000'
DATE: 1-19-2015
SURVEYED BY: BK/AA
DRAWN BY: CMJ
APPROVED BY: RMH
SHEET : 1 OF 1

# VICINITY MAP

NOT TO SCALE



*SECTION 21, TWP. 26 SOUTH, RGE. 32 EAST,  
N. M. P. M., LEA CO., NEW MEXICO*

OPERATOR: Mewbourne Oil Company  
 LEASE: Red Hills West 21 A2DM Fed Com  
 WELL NO.: 2H

LOCATION: 200' FNL & 990' FWL  
 ELEVATION: 3150'

Firm No.: TX 10193838 NM 4655451

Copyright 2014 - All Rights Reserved

NO.	REVISION	DATE
JOB NO.: LS140583		
DWG. NO.: 140583VM		

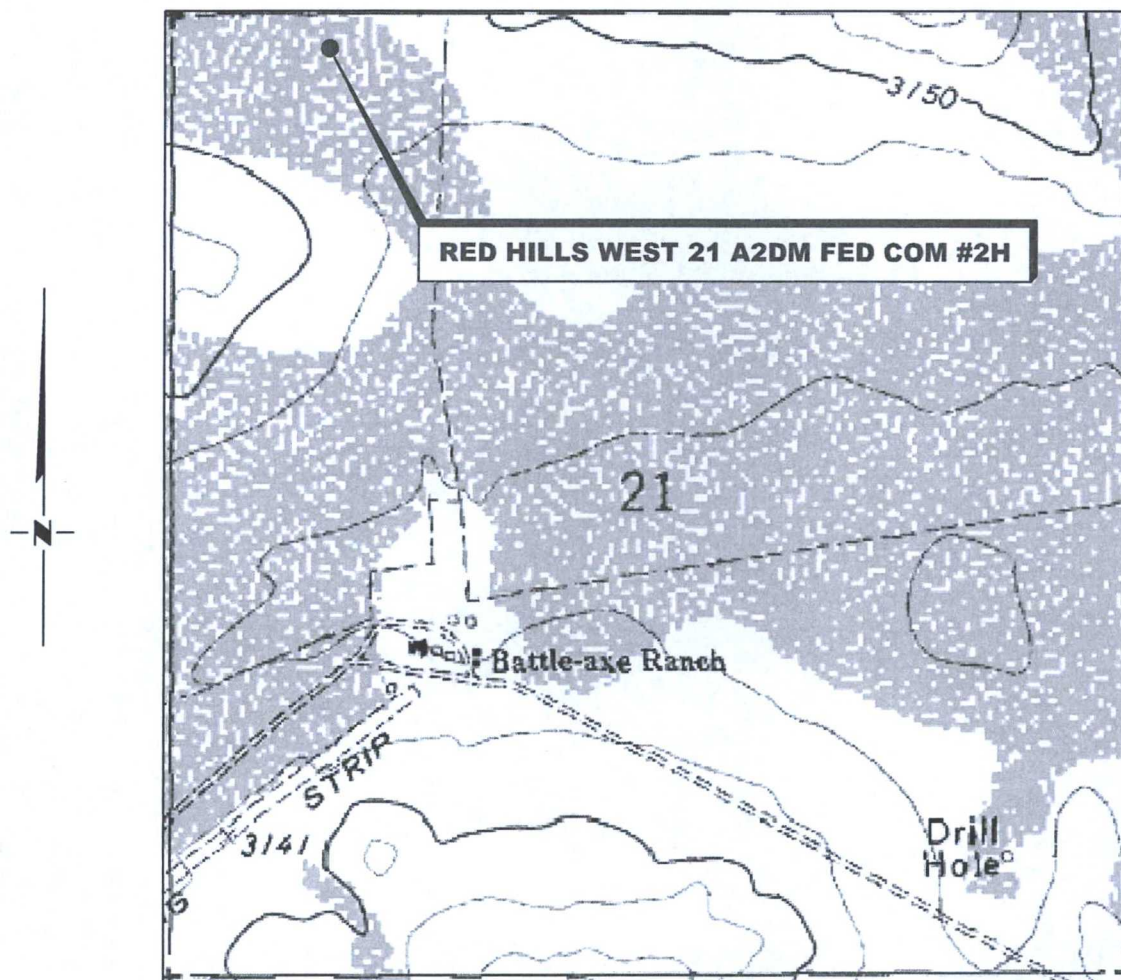
# RRC

308 W. BROADWAY ST., HOBBS, NM 88240 (575) 964-8200

SCALE: NTS
DATE: 1-19-2015
SURVEYED BY: BK/AA
DRAWN BY: CMJ
APPROVED BY: RMH
SHEET : 1 OF 1



# LOCATION VERIFICATION MAP



*SECTION 21, TWP. 26 SOUTH, RGE. 32 EAST,  
N. M. P. M., LEA CO., NEW MEXICO*

OPERATOR: Mewbourne Oil Company  
LEASE: Red Hills West 21 A2DM Fed Com  
WELL NO.: 2H  
ELEVATION: 3150'

LOCATION: 200' FNL & 990' FWL  
CONTOUR INTERVAL:  
USGS TOPO. SOURCE MAP:  
Paduca Breaks West, NM (1973)

Firm No.: TX 10193838 NM 4655451

Copyright 2014 - All Rights Reserved

NO.	REVISION	DATE
JOB NO.: LS140583		
DWG. NO.: 140583VM		

## RRC

308 W. BROADWAY ST., HOBBS, NM 88240 (575) 964-8200

SCALE: 1"=1000'
DATE: 1-19-2015
SURVEYED BY: BK/AA
DRAWN BY: CMJ
APPROVED BY: RMH
SHEET : 1 OF 1



75

- Location (Permit)
- Drilling (Well Start)
- × Abandoned Location (Permit)
- ✱ Gas Well
- Oil Well
- ✱ Oil and Gas Well
- Other (Observation, etc)
- ✱ Injection Well
- Suspended
- ✱ Plugged Gas Well
- ✱ Plugged Oil Well
- ✱ Plugged Oil and Gas
- Dry Hole (No Shows)
- ✱ Dry Hole w/ Gas Show
- ✱ Dry Hole w/ Oil Show
- ✱ Dry Hole w/ Oil and Gas Show

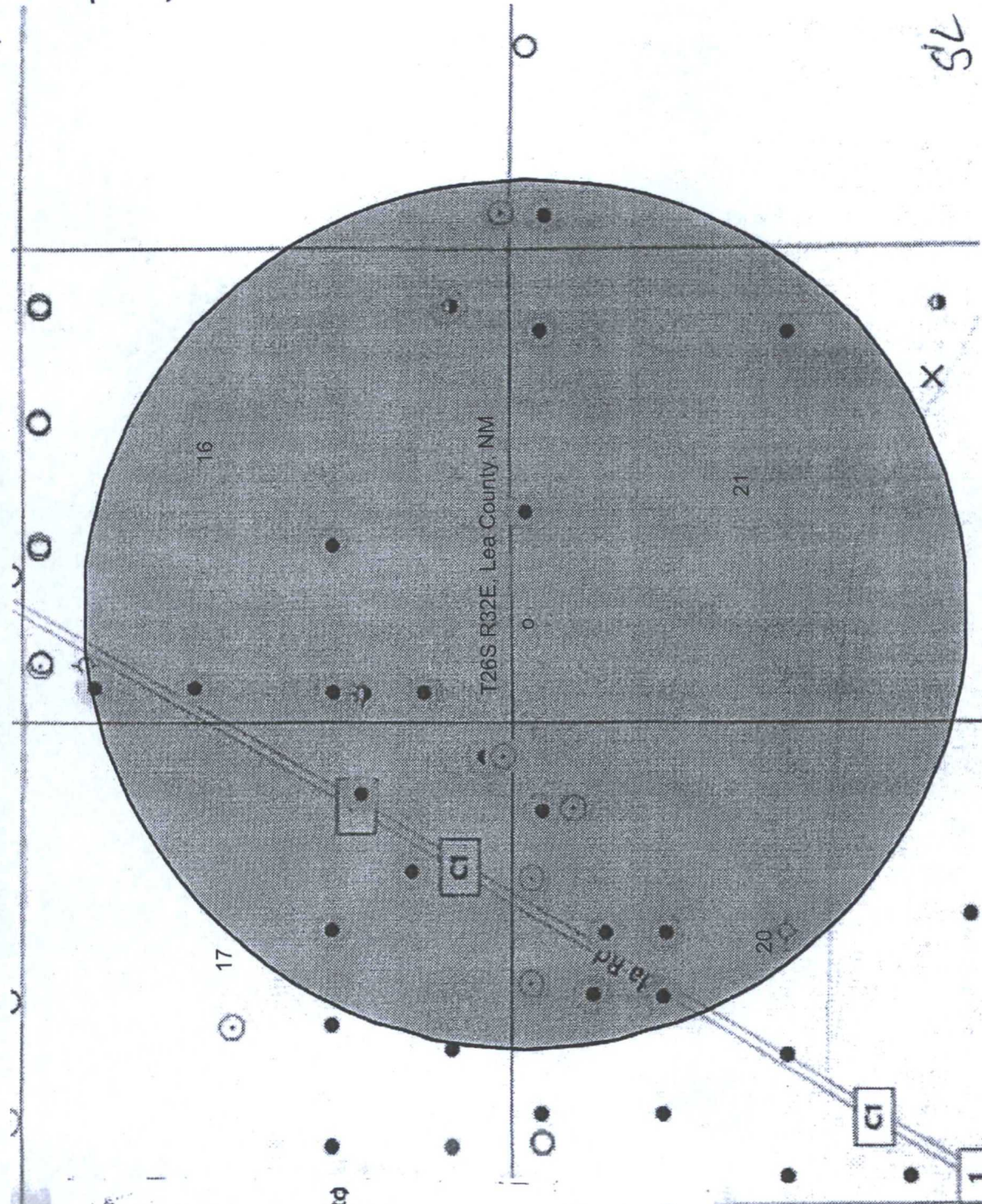
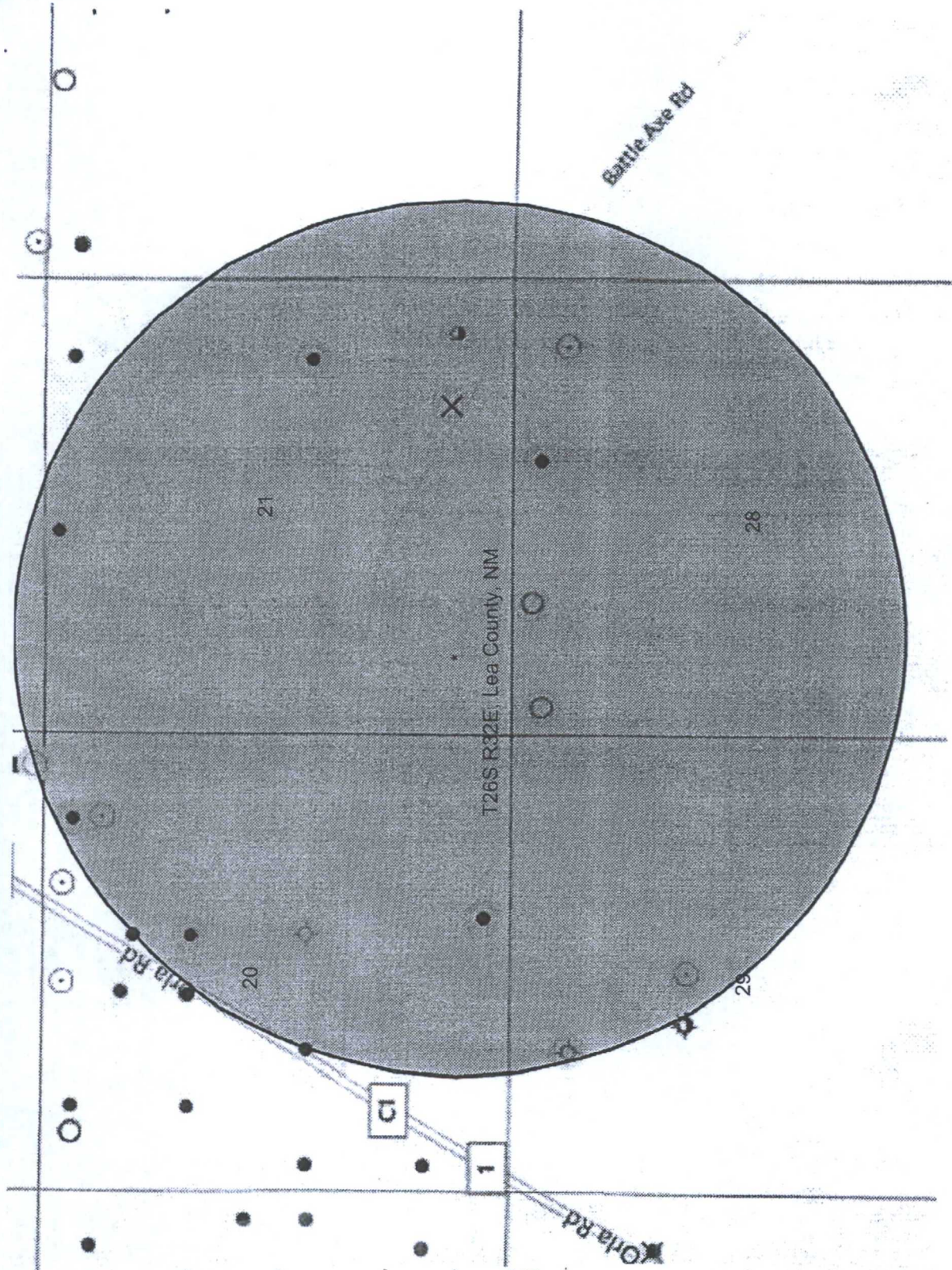


EXHIBIT "4"

Red Hills West 21 A2DM Fed Com #2H





- Location (Permit)
- Drilling (Well Stat)
- Abandoned Location (Permit)
- Gas Well
- Oil Well
- Oil and Gas Well
- Other (Observation, etc)
- Injection Well
- Suspended
- Plugged Gas Well
- Plugged Oil Well
- Plugged Oil and Gas
- Dry Hole (No Shows)
- Dry Hole w/Gas Show
- Dry Hole w/Oil Show
- Dry Hole w/Oil and Gas Show

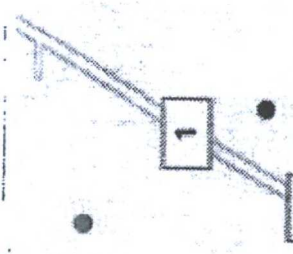


EXHIBIT "4A"

Red Hills West 21 A2DM Fed Com #2H