

Exhibit A-1

District I
1625 N. French Dr., Hobbs, NM 88240
Phone: (575) 393-6161 Fax: (575) 393-0720
District II
811 S. First St., Artesia, NM 88210
Phone: (575) 748-1283 Fax: (575) 748-9720
District III
1000 Rio Brazos Road, Aztec, NM 87410
Phone: (505) 334-6178 Fax: (505) 334-6170
District IV
1220 S. St. Francis Dr., Santa Fe, NM 87505
Phone: (505) 476-3460 Fax: (505) 476-3462

HOBBS OGD

SEP 12 2016

RECEIVED

State of New Mexico

Energy, Minerals & Natural Resources Department

OIL CONSERVATION DIVISION

1220 South St. Francis Dr.

Santa Fe, NM 87505

Form C-102

Revised August 1, 2011

Submit one copy to appropriate

District Office

☒ AMENDED REPORT

EXACT BHL

WELL LOCATION AND ACREAGE DEDICATION PLAT

¹ API Number 30-025-42629	² Pool Code 97955	³ Pool Name WC-025 G-06 5263319P; BONE SPRING
⁴ Property Code 314914	⁵ Property Name SALADO DRAW 29 26 33 FED COM	⁶ Well Number 1H
⁷ OORID No. 4323	⁸ Operator Name CHEVRON U.S.A. INC.	⁹ Elevation 3213'

Surface Location

UL or lot no.	Section	Township	Range	Lot Idn	Feet from the	North/South line	Feet from the	East/West line	County
D	29	26 SOUTH	33 EAST, N.M.P.M.		200'	NORTH	1283'	WEST	LEA

Bottom Hole Location If Different From Surface

UL or lot no.	Section	Township	Range	Lot Idn	Feet from the	North/South line	Feet from the	East/West line	County
E	32	26 SOUTH	33 EAST, N.M.P.M.	4	280'	SOUTH	355'	WEST	LEA

¹² Dedicated Acres 474.71	¹³ Joint or Infill X	¹⁴ Consolidation Code R-14069	¹⁵ Order No. 365' 525'
--	---	--	---

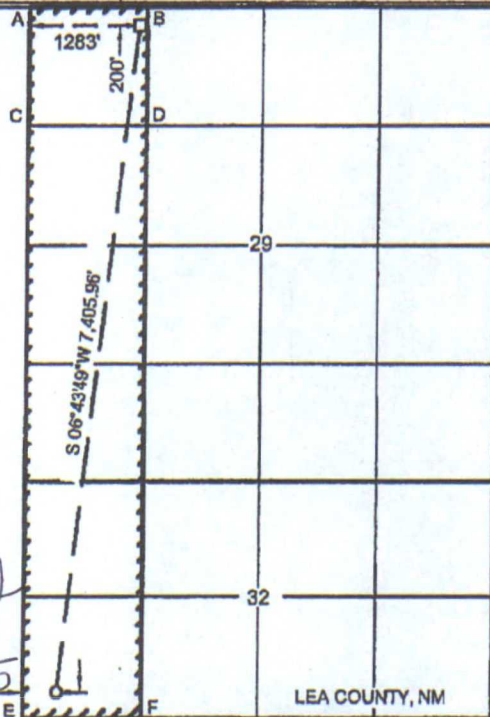
08/24/2016

No allowable will be assigned to this completion until all interests have been consolidated or a non-standard unit has been approved by the division.

Daniel Murillo

SALADO DRAW 29 26 33 FED COM NO. 1H WELL	
X=	727,838 NAD 27
Y=	372,173
LAT.	32.021087
LONG.	103.598200
X=	768,026 NAD83
Y=	372,230
LAT.	32.021212
LONG.	103.598667
ELEVATION +3213' NAVD 88	

PROPOSED BOTTOM HOLE LOCATION	
X=	726,970 NAD 27
Y=	364,818
LAT.	32.000886
LONG.	103.601161
X=	768,158 NAD83
Y=	364,875
LAT.	32.001011
LONG.	103.601627



BHL
525'
365'

CORNER COORDINATES TABLE (NAD 27)

A - Y=372364.44, X=726553.40
B - Y=372373.27, X=727875.49
C - Y=371043.84, X=726583.92
D - Y=371053.27, X=727885.85
E - Y=364535.63, X=726617.46
F - Y=364544.81, X=727938.29

17 OPERATOR CERTIFICATION

I hereby certify that the information contained herein is true and complete to the best of my knowledge and belief, and that this organization either owns a working interest or unleased mineral interest in the land including the proposed bottom hole location or has a right to drill this well at this location pursuant to a contract with an owner of such a mineral or working interest, or to a voluntary pooling agreement or a compulsory pooling order heretofore entered by the division.

Cindy Herrera Murillo 9-18-14
Signature

Cindy Herrera - Murillo
Printed Name

CherreraMurillo@chevron.com
E-mail Address

18 SURVEYOR CERTIFICATION

I hereby certify that the well location shown on this plat was plotted from field notes of actual surveys made by me or under my supervision, and that the same is true and correct to the best of my belief.

4.30.14
Date of Survey

Signature and Seal of Professional Surveyor



15078
Certificate Number
JUN 16 2015