

District I
1625 N. French Dr., Hobbs, NM 88240
Phone: (575) 393-6161 Fax: (575) 393-0720
District II
811 S. First St., Artesia, NM 88210
Phone: (575) 748-1283 Fax: (575) 748-9720
District III
1000 Rio Brazos Road, Aztec, NM 87410
Phone: (505) 334-6178 Fax: (505) 334-6170
District IV
1220 S. St. Francis Dr., Santa Fe, NM 87505
Phone: (505) 476-3460 Fax: (505) 476-3462

State of New Mexico
Energy, Minerals & Natural Resources Department
OIL CONSERVATION DIVISION
1220 South St. Francis Dr.
Santa Fe, NM 87505

Form C-102
Revised August 1, 2011
Submit one copy to appropriate
District Office

☐ AMENDED REPORT

WELL LOCATION AND ACREAGE DEDICATION PLAT

¹ API Number 30-025-43276	² Pool Code 5695	³ Pool Name BILBREY BASIN; BONE SPRING
⁴ P 316253	⁵ Property Name BILBREY 34/27 BZNC FED COM	⁶ Well Number 1H
⁷ GRID NO. 14744	⁸ Operator Name MEWBOURNE OIL COMPANY	⁹ Elevation 3742'

¹⁰ Surface Location

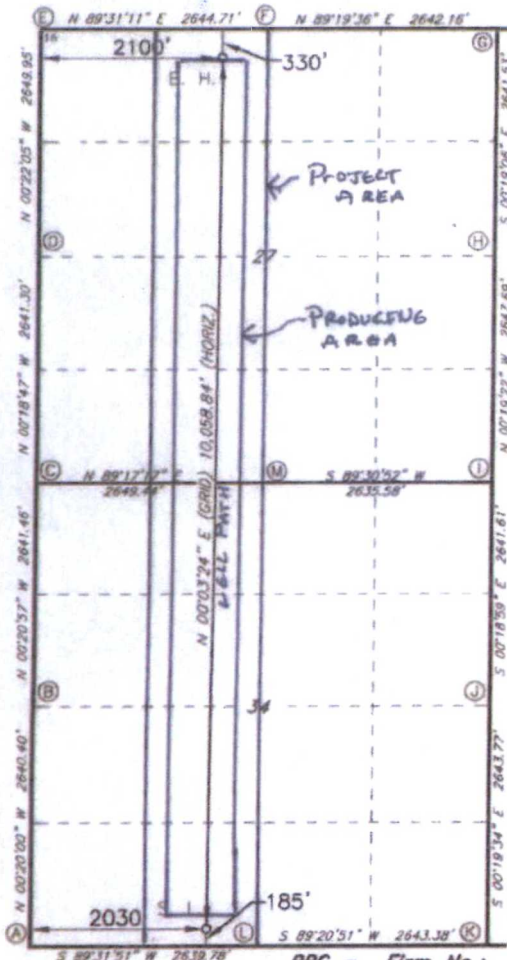
UL or lot no.	Section	Township	Range	Lot Idn	Feet from the	North/South line	Feet from the	East/West line	County
N	34	21S	32E		185	SOUTH	2030	WEST	LEA

¹¹ Bottom Hole Location If Different From Surface

UL or lot no.	Section	Township	Range	Lot Idn	Feet from the	North/South line	Feet from the	East/West line	County
C	27	21S	32E		330	NORTH	2100	WEST	LEA

¹² Dedicated Acres 320	¹³ Joint or Infill	¹⁴ Consolidation Code	¹⁵ Order No.
---	-------------------------------	----------------------------------	-------------------------

No allowable will be assigned to this completion until all interest have been consolidated or a non-standard unit has been approved by the division.



CORNER DATA
NAD 27 GRID - NM EAST
A: FOUND BRASS CAP "1916"
N 519988.0 - E 704457.6
B: FOUND BRASS CAP "1916"
N 522637.8 - E 704442.2
C: FOUND BRASS CAP "1916"
N 525278.7 - E 704426.1
D: FOUND BRASS CAP "1916"
N 527919.4 - E 704411.7
E: FOUND BRASS CAP "1916"
N 530568.7 - E 704394.7
F: FOUND BRASS CAP "1916"
N 530590.8 - E 707038.7
G: FOUND BRASS CAP "1916"
N 530621.9 - E 709680.1
H: FOUND BRASS CAP "1916"
N 527981.0 - E 709694.8
I: FOUND BRASS CAP "1916"
N 525333.9 - E 708709.7
J: FOUND BRASS CAP "1916"
N 522692.9 - E 709724.3
K: FOUND BRASS CAP "1916"
N 520049.7 - E 709739.3
L: FOUND BRASS CAP "1916"
N 520019.5 - E 707098.7
M: FOUND BRASS CAP "1916"
N 525311.6 - E 707074.8

GEODETIC DATA
NAD 27 GRID - NM EAST
SURFACE LOCATION
N 520199.7 - E 706488.3
LAT: 32.42836461° N
LONG: 103.66411360° W
BOTTOM HOLE
N 530256.4 - E 706496.3
LAT: 32.45600732° N
LONG: 103.66387707° W
GEODETIC DATA
NAD 83 GRID - NM EAST
SURFACE LOCATION
N 520260.9 - E 747668.4
LAT: 32.42848751° N
LONG: 103.66460197° W
BOTTOM HOLE
N 530317.5 - E 747678.0
LAT: 32.45613004° N
LONG: 103.66436655° W

¹⁷ OPERATOR CERTIFICATION

I hereby certify that the information contained herein is true and complete to the best of my knowledge and belief, and that this organization either owns a working interest or unleased mineral interest in the land including the proposed bottom hole location or has a right to drill this well at this location pursuant to a contract with an owner of such a mineral or working interest, or to a voluntary pooling agreement or a compulsory pooling order heretofore entered by the division.

Signature: **Bradley Bishop** Date: **4-8-16**
Printed Name: **BRADLEY BISHOP**

E-mail Address

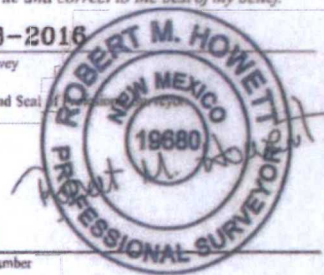
¹⁸ SURVEYOR CERTIFICATION

I hereby certify that the well location shown on this plat was plotted from field notes of actual surveys made by me or under my supervision, and that the same is true and correct to the best of my belief.

2-18-2016

Date of Survey

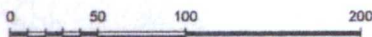
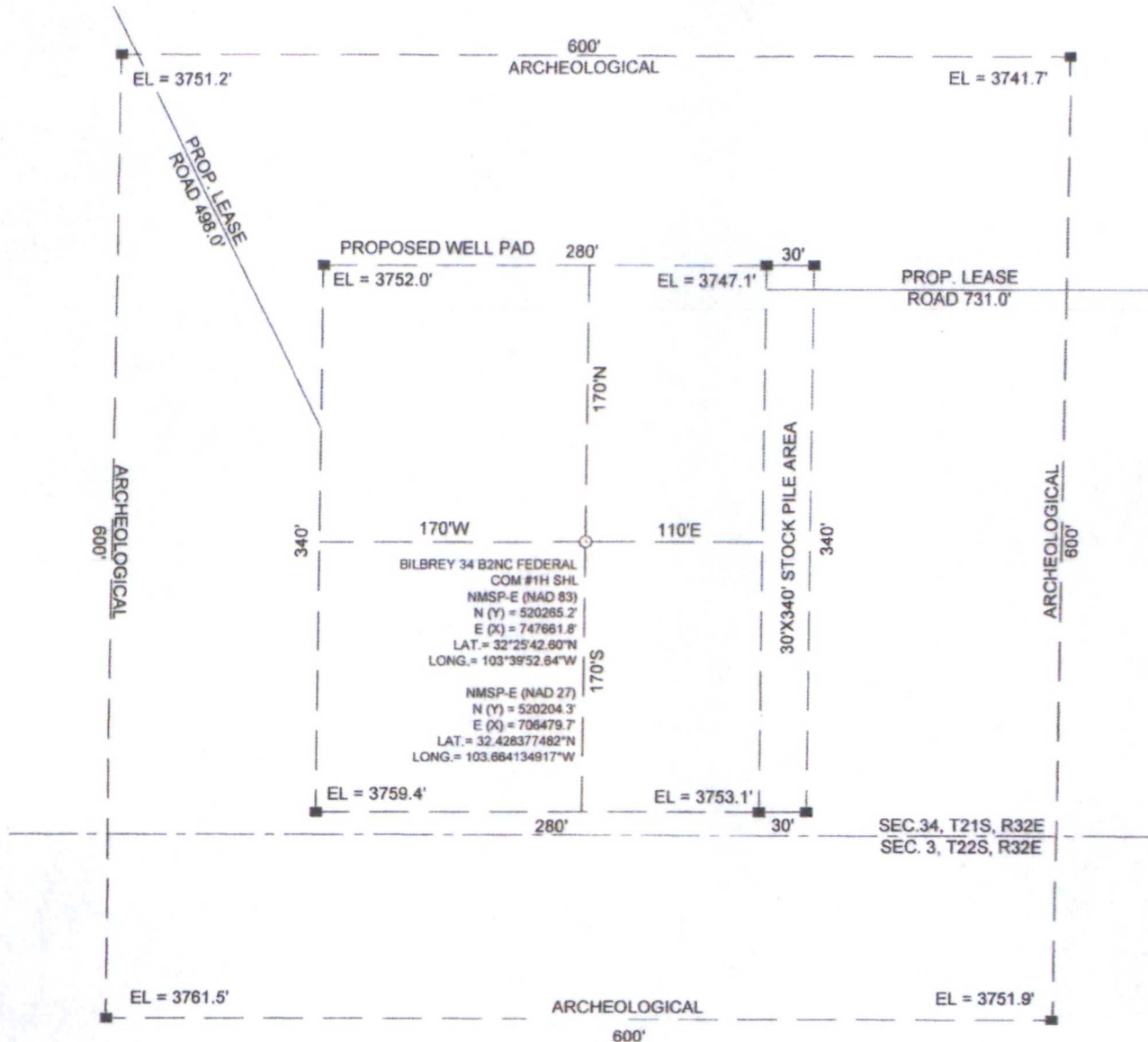
Signature and Seal



19680
Certificate Number

Exhibit "3"

SITE LOCATION



GRAPHIC SCALE 1" = 100'

SECTION 34, T 21S, R 32E, N.M.P.M.

COUNTY: LEA STATE: NM

DESCRIPTION: 185' FSL & 2030' FWL

OPERATOR: MEWBOURNE OIL COMPANY

WELL NAME: BILBREY 34 B2NC FEDERAL COM #1H



WTC, INC.
405 S.W. 1st STREET
ANDREWS, TEXAS 79714
(432) 523-2181



DRIVING DIRECTIONS:

FROM THE INTERSECTION OF HWY 62-180 AND CAMPBELL ROAD, GO SOUTH ON CAMPBELL ROAD 5.8 MILES TURN LEFT ON LEASE ROAD, GO WEST 1 MILE AND TURN RIGHT, GO 1 MILE AND TURN RIGHT, GO 1.1 MILE AND TURN LEFT, GO 1 MILE AND TURN RIGHT, GO 1.6 MILES AND LATHE FOR PROPOSED ROAD IS ON THE WEST CORNER OF EXISTING PAD.



MEWBOURNE OIL COMPANY

JOB No.: WTC49690