

Submit 1 Copy To Appropriate District
Office
District I - (575) 393-6161
1625 N. French Dr., Hobbs, NM 88240
District II - (575) 748-1283
811 S. First St., Artesia, NM 88210
District III - (505) 334-6178
1000 Rio Brazos Rd., Aztec, NM 87410
District IV - (505) 476-3460
1220 S. St. Francis Dr., Santa Fe, NM
87505

State of New Mexico
Energy, Minerals and Natural Resources
OIL CONSERVATION DIVISION
1220 South St. Francis Dr.
Santa Fe, NM 87505

Form C-103
Revised July 18, 2013

WELL API NO. 30-025-09053	
5. Indicate Type of Lease STATE <input type="checkbox"/> FEE <input checked="" type="checkbox"/>	
6. State Oil & Gas Lease No.	
7. Lease Name or Unit Agreement Name SEVEN RIVERS QUEEN UNIT	
8. Well Number 007	
9. OGRID Number 269324	
10. Pool name or Wildcat EUNICE; SEVEN RIVERS-QUEEN	
11. Elevation (Show whether DR, RKB, RT, GR, etc.) 3511' GR	

SUNDRY NOTICES AND REPORTS ON WELLS
(DO NOT USE THIS FORM FOR PROPOSALS TO DRILL OR TO DEEPEN OR PLUG BACK TO A DIFFERENT RESERVOIR. USE "APPLICATION FOR PERMIT" (FORM C-101) FOR SUCH PROPOSALS.)

1. Type of Well: Oil Well ☐ Gas Well ☒ Other Injection

2. Name of Operator
LINN OPERATING, INC.

3. Address of Operator
600 TRAVIS, SUITE 5100, HOUSTON, TEXAS 77002

4. Well Location
Unit Letter G : 1980 feet from the NORTH line and 1980 feet from the EAST line
Section 27 Township 22S Range 36E NMPM County LEA

12. Check Appropriate Box to Indicate Nature of Notice, Report or Other Data

NOTICE OF INTENT	SUBSEQUENT REPORT OF:
PERFORM REMEDIAL WORK <input type="checkbox"/>	REMEDIAL WORK <input type="checkbox"/>
TEMPORARILY ABANDON <input type="checkbox"/>	ALTERING CASING <input type="checkbox"/>
PULL OR ALTER CASING <input type="checkbox"/>	COMMENCE DRILLING OPNS. <input type="checkbox"/>
DOWNHOLE COMMINGLE <input type="checkbox"/>	CASING/CEMENT JOB <input type="checkbox"/>
CLOSED-LOOP SYSTEM <input type="checkbox"/>	OTHER: <input type="checkbox"/>
OTHER: <input type="checkbox"/>	

13. Describe proposed or completed operations. (Clearly state all pertinent details, and give pertinent dates, including estimated date of starting any proposed work). SEE RULE 19.15.7.14 NMAC. For Multiple Completions: Attach wellbore diagram of proposed completion or recompletion.

LINN OPERATING, INC. successfully plugged SRQU 7 on 10/6/2016. Please see attached plugging operations along with a current wellbore diagram for your review and approval.

Spud Date:

Approved for Plugging of wellbore only. Liability under bond is retained pending restoration and completion of the C-103, Specific for Subsequent Report of Well Plugging, which may be found on the OCD web page under forms.

I hereby certify that the information above is true and complete to the best of my knowledge and belief.

SIGNATURE Shawn Hildreth TITLE Regulatory Advisor DATE 10/31/2016
Type or print name Shawn Hildreth E-mail address: shildreth@linnenergy.com PHONE: 281-840-4234

For State Use Only

APPROVED BY: Mark White TITLE P.E.S. DATE 11/2/2016
Conditions of Approval (if any):

LINN Operating, Inc. (269324)
Seven Rivers Queen Unit #007 (309557)
API: 30-025-09053
Sec. 27-T22S-R36E

Completed Plugging Operations

- 10/3/2016** MIRU plugging equipment. Dug out cellar, removed wellhead, cut tbq slips, BU BOP & released packer.
- 10/4/2016** POH w/51 stands of 2-3/8" tbq. RIH w/packer to 3000'. Squeezed 25 sx Class "C" cement & displaced to 3300'. WOC. Pressure tested csg w/packer set @ 3000', held 500 psi. Tagged plug @ 3347'. Set 5-1/2" CIBP @ 3280'. Circulated hole w/ MLF, pressure tested csg, held 500 psi. Spotted 25 sx Class "C" cement @ 3280'—3039'. Spotted 25 sx Class "C" cement @ 2950'-2709' and notified Mark Whitaker w/OCD. WOC.
- 10/5/2016** Tagged plug @ 2720'. POH w/1450' of tbq. Perf'd casing @ 1400', pressured up on perfs. Spotted 25 sx Class "C" cement @ 1450'-1209'. WOC. Tagged plug @ 1230'. Perf'd csg @ 500', squeezed 125 sx Class "C" cement & circulated to surface (notified Mark Whitaker w/OCD).
- 10/6/2016** Verified cement to surface. Rigged down and moved off. Moved in backhole and welder. Dug out cellar. Cut off wellhead. Welded on "Above Ground Dry Hole Marker". Backfilled cellar. Cut off deadmen. Cleaned location and moved off.



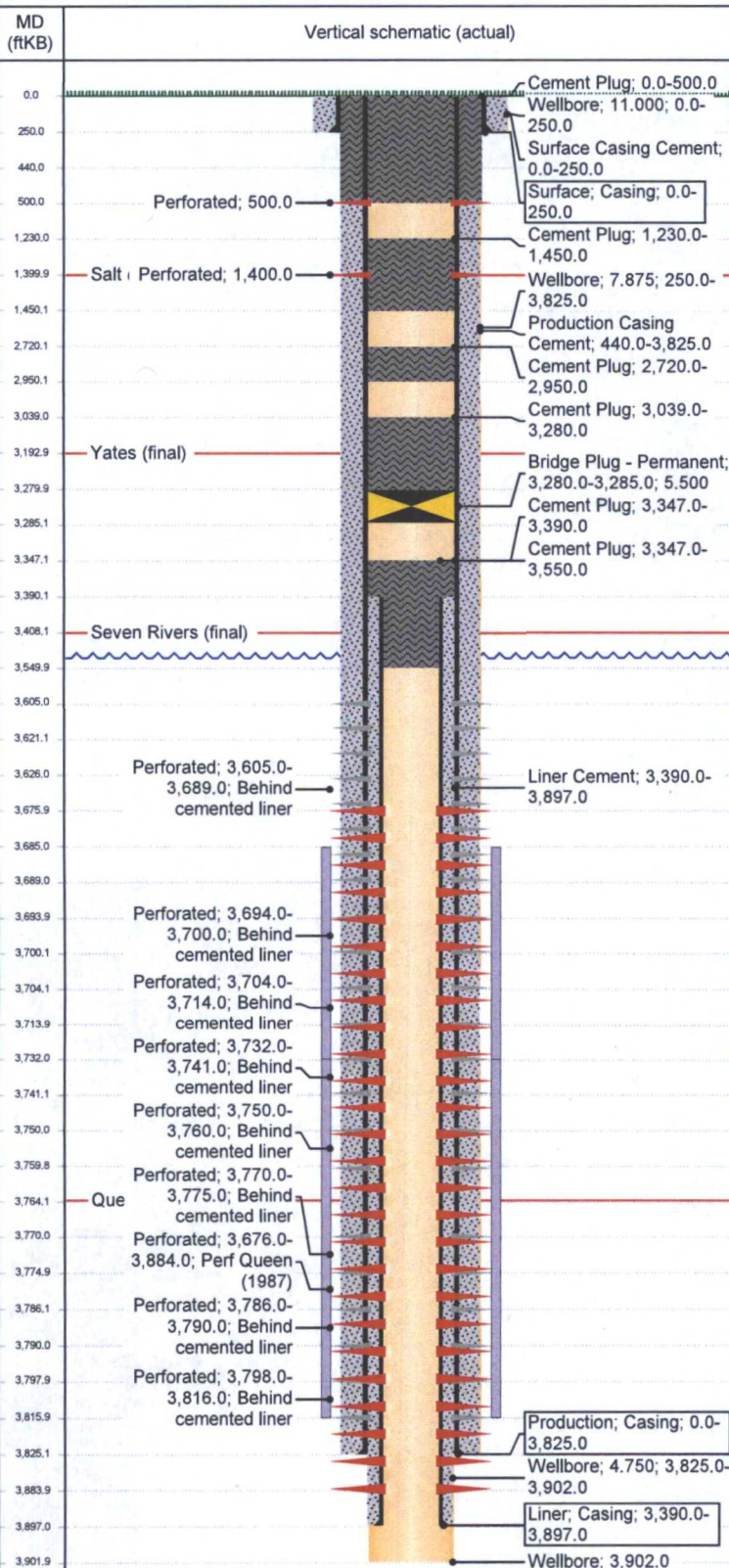
NM Schematic

Well Name: SEVEN RIVERS QUEEN UNIT 7

API/UWI	Field Name	County	State/Province	Section	Township	Range	Survey	Block
3002509053	PBNM - PB - SEVEN RIVERS QUEEN	Lea	NM	27	022-S	036-E		
Ground Elevation (ft)	Orig KB Elev (ft)	KB-Grd (ft)	Initial Spud Date	Rig Release Date	TD Date	Latitude (°)	Longitude (°)	Operated?
3,511.00	3,511.00	0.00	7/18/1956			32° 21' 52.942" N	103° 15' 3.704" W	Yes

Original Hole, 10/14/2016 2:50:56 PM

Original Hole Data



Wellbores			
North-South Distance (ft)	NS Flag	East-West Distance (ft)	EW Flag
1,980.0	FNL	1,980.0	FEL

Casing Strings						
Csg Des	Set Dept...	OD Nom...	ID Nom...	Wt/Len (l...	String Grade	Run Date
Surface	250.0	8 5/8	8.097	24.00	J-55	7/19/1956
Csg Des	Set Dept...	OD Nom...	ID Nom...	Wt/Len (l...	String Grade	Run Date
Production	3,825.0	5 1/2	5.012	14.00	J-55	7/20/1956
Csg Des	Set Dept...	OD Nom...	ID Nom...	Wt/Len (l...	String Grade	Run Date
Liner	3,897.0	3.64		2.74		3/5/1987

Cement Stages				
Description Cement Plug	Top (ftKB) 3,347.0	Btm (ftKB) 3,550.0	Eval Method	Comment RIH w pkr to 3000'. Sqz 25 sks cmt. Tag TOC at 3347'.
Description Cement Plug	Top (ftKB) 3,347.0	Btm (ftKB) 3,390.0	Eval Method	Comment RIH w pkr to 3000'. Sqz 25 sks cmt. Tag TOC at 3347'.
Description Cement Plug	Top (ftKB) 3,039.0	Btm (ftKB) 3,280.0	Eval Method	Comment Spot 25 sks cmt
Description Cement Plug	Top (ftKB) 2,720.0	Btm (ftKB) 2,950.0	Eval Method	Comment Spot 25 sks cmt. Tag TOC at 2720'
Description Cement Plug	Top (ftKB) 1,230.0	Btm (ftKB) 1,450.0	Eval Method	Comment Perf at 1400'. Pressured up on perms. Spot 25 sks cmt 1450-1230 (TOC tagged).
Description Cement Plug	Top (ftKB) 0.0	Btm (ftKB) 500.0	Eval Method	Comment Perf at 500'. Sqz 125 sks to surface.
Description Surface Casing Cement	Top (ftKB) 0.0	Btm (ftKB) 250.0	Eval Method	Comment Cmt'd w/ 250 sxs of regular neat cmt. Circ 50 sks to pit.
Description Production Casing Cement	Top (ftKB) 440.0	Btm (ftKB) 3,825.0	Eval Method	Comment Cmt'd w/ 1620 sxs. TOC at 440' (Temp Svy)
Description Liner Cement	Top (ftKB) 3,390.0	Btm (ftKB) 3,897.0	Eval Method	Comment Cmt liner w 75 sks cmt. Circ to TOL.

Tubing Strings			
Tubing Description	Set Depth...	Run Date	Pull Date
Tubing - Production	3,626.0		10/3/2016

Perforations		
Top (ftKB) 500.0	Btm (ftKB) 500.0	Comment
Top (ftKB) 1,400.0	Btm (ftKB) 1,400.0	Comment
Top (ftKB) 3,605.0	Btm (ftKB) 3,689.0	Comment Behind cemented liner
Top (ftKB) 3,676.0	Btm (ftKB) 3,884.0	Comment Perf Queen (1987)
Top (ftKB) 3,694.0	Btm (ftKB) 3,700.0	Comment Behind cemented liner
Top (ftKB) 3,704.0	Btm (ftKB) 3,714.0	Comment Behind cemented liner
Top (ftKB) 3,732.0	Btm (ftKB) 3,741.0	Comment Behind cemented liner
Top (ftKB) 3,750.0	Btm (ftKB) 3,760.0	Comment Behind cemented liner
Top (ftKB) 3,770.0	Btm (ftKB) 3,775.0	Comment Behind cemented liner
Top (ftKB) 3,786.0	Btm (ftKB) 3,790.0	Comment Behind cemented liner
Top (ftKB) 3,798.0	Btm (ftKB) 3,816.0	Comment Behind cemented liner



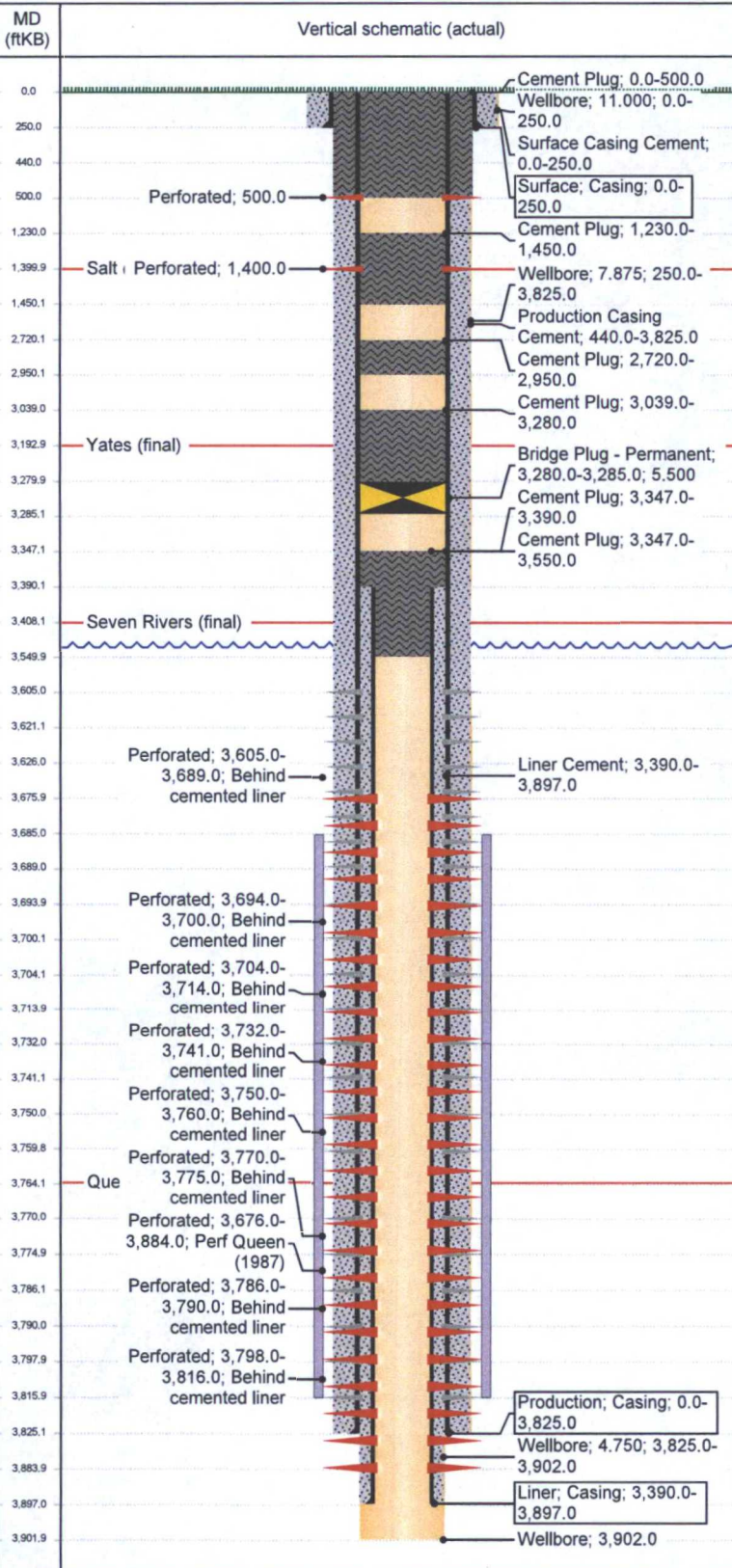
NM Schematic

Well Name: SEVEN RIVERS QUEEN UNIT 7

API/UWI 3002509053	Field Name PBNM - PB - SEVEN RIVERS QUEEN	County Lea	State/Province NM	Section 27	Township 022-S	Range 036-E	Survey	Block
Ground Elevation (ft) 3,511.00	Orig KB Elev (ft) 3,511.00	KB-Grd (ft) 0.00	Initial Spud Date 7/18/1956	Rig Release Date	TD Date	Latitude (°) 32° 21' 52.942" N	Longitude (°) 103° 15' 3.704" W	Operated? Yes

Original Hole, 10/14/2016 2:50:57 PM

Original Hole Data



Other In Hole				
Des	Top (ftKB)	Btm (ftKB)	Run Date	Com
Bridge Plug - Permanent	3,280.0	3,285.0		Set CIBP at 3280' and cap with 25 sks cmt.
Formations				
Formation Salt	Final Top... 1,400.0	Final Btm... 2,950.0	Comment	
Formation Yates	Final Top... 3,193.0	Final Btm...	Comment	
Formation Seven Rivers	Final Top... 3,408.0	Final Btm...	Comment	
Formation Queen	Final Top... 3,764.0	Final Btm...	Comment	