

HOBBS OCDUNITED STATES
DEPARTMENT OF THE INTERIOR
BUREAU OF LAND MANAGEMENT**NMOCD**FORM APPROVED
OMB NO. 1004-0135
Expires: July 31, 2010

DEC 02 2016

SUNDRY NOTICES AND REPORTS ON WELLS
Do not use this form for proposals to drill or to re-enter an abandoned well. Use form 3160-3 (APD) for such proposals.**RECEIVED****SUBMIT IN TRIPLICATE - Other instructions on reverse side.**5. Lease Serial No.
NMNM118723

6. If Indian, Allottee or Tribe Name

7. If Unit or CA/Agreement, Name and/or No.

1. Type of Well

☒ Oil Well ☐ Gas Well ☐ Other8. Well Name and No.
SD WE 23 FED P7 4H2. Name of Operator
CHEVRON USA INCContact: DENISE PINKERTON
/ E-Mail: leakejd@chevron.com9. API Well No.
30-025-43089-00-X13a. Address
1616 W. BENDER BLVD
HOBBS, NM 882403b. Phone No. (include area code)
Ph: 432-687-737510. Field and Pool, or Exploratory
JENNINGS

4. Location of Well (Footage, Sec., T., R., M., or Survey Description)

Sec 14 T26S R32E SESE 215FSL 623FEL

11. County or Parish, and State
LEA COUNTY, NM

12. CHECK APPROPRIATE BOX(ES) TO INDICATE NATURE OF NOTICE, REPORT, OR OTHER DATA

TYPE OF SUBMISSION	TYPE OF ACTION			
<input type="checkbox"/> Notice of Intent	<input type="checkbox"/> Acidize	<input type="checkbox"/> Deepen	<input type="checkbox"/> Production (Start/Resume)	<input type="checkbox"/> Water Shut-Off
<input checked="" type="checkbox"/> Subsequent Report	<input type="checkbox"/> Alter Casing	<input type="checkbox"/> Fracture Treat	<input type="checkbox"/> Reclamation	<input type="checkbox"/> Well Integrity
<input type="checkbox"/> Final Abandonment Notice	<input type="checkbox"/> Casing Repair	<input type="checkbox"/> New Construction	<input type="checkbox"/> Recomplete	<input checked="" type="checkbox"/> Other
	<input type="checkbox"/> Change Plans	<input type="checkbox"/> Plug and Abandon	<input type="checkbox"/> Temporarily Abandon	Production Start-up
	<input type="checkbox"/> Convert to Injection	<input type="checkbox"/> Plug Back	<input type="checkbox"/> Water Disposal	

13. Describe Proposed or Completed Operation (clearly state all pertinent details, including estimated starting date of any proposed work and approximate duration thereof. If the proposal is to deepen directionally or recomple horizontally, give subsurface locations and measured and true vertical depths of all pertinent markers and zones. Attach the Bond under which the work will be performed or provide the Bond No. on file with BLM/BIA. Required subsequent reports shall be filed within 30 days following completion of the involved operations. If the operation results in a multiple completion or recomple in a new interval, a Form 3160-4 shall be filed once testing has been completed. Final Abandonment Notices shall be filed only after all requirements, including reclamation, have been completed, and the operator has determined that the site is ready for final inspection.)

COMPLETION REPORT FOR NEW DRILL:

06/13/2016: MIRU. RUN CBL.

06/17/2016: TEST PRODUCTION CSG @ 9500PSI FOR 30 MINS. ESTAB INJECTION RATE: 8000PSI. 141 BBLS.

06/20/2016 THROUGH 06/29/2016: PERF 15 STAGES: 9367 - 13,807'.

FRAC W/TOTAL SAND (100MESH & 20/40) = 6,292,245 LBS.

***DETAILED REPORT FOR PERF & FRAC IS ATTACHED.

07/04/2016: SET PKR @ 8445.

07/06/2016: TEST EQPT & TEST BOP BLIND RAMS & PIPE RAMS 250L/4500H. ANNULAR 250L/3000H.

14. I hereby certify that the foregoing is true and correct.

Electronic Submission #353506 verified by the BLM Well Information System

For CHEVRON USA INC, sent to the Hobbs

Committed to AFMSS for processing by PRISCILLA PEREZ on 10/04/2016 (17PP0007SE)

Name (Printed/Typed) DENISE PINKERTON

Title REGULATORY SPECIALIST

Signature (Electronic Submission)

Date 10/04/2016

THIS SPACE FOR FEDERAL OR STATE OFFICE USE

APPROVED FOR RECORD /S/ DAVID R. GLASS NOV 08 2016 DAVID R. GLASS PETROLEUM ENGINEER		
Approved By	Title	Date
Conditions of approval, if any, are attached. Approval of this notice does not warrant or certify that the applicant holds legal or equitable title to those rights in the subject lease which would entitle the applicant to conduct operations thereon.	Office	

Title 18 U.S.C. Section 1001 and Title 43 U.S.C. Section 1212, make it a crime for any person knowingly and willfully to make to any department or agency of the United States any false, fictitious or fraudulent statements or representations as to any matter within its jurisdiction.

** BLM REVISED ** BLM REVISED ** BLM REVISED ** BLM REVISED ** BLM REVISED **

Additional data for EC transaction #353506 that would not fit on the form

32. Additional remarks, continued

07/07/2016: SET 2 7/8" TBG @ 8465'. PKR @ 8443'

07/08/2016: RIG DOWN.

09/13/2016: ON 24 HR OPT. FLOWING 1033 OIL, 1759 GAS, 1129 WATER. GOR - 1703.

TBG - 940PSI, CSG - 140 PSI, ON 36/64" CHOKE.

TOC @ 4076'.

SD WE 23 P7 #004H

PERF & FRAC INFORMATION

STAGE 1: 13807, 13747, 13687, 13627, 13567

6 spf, .41 dia hole. Total bbls pumped: 1056 bbls. Max pressure: 8376 psi

PUMP STAGE 1:

Sand in formation 419,808 lbs 100% Prime up & test lines to 9500psi.
Equalize/open well @ 1421 psi. Avg Rate 86.0 bpm. Avg press:5712 psi.
Max Rate: 86.0 bpm Max Press:8342 psi. ISIP:1931 psi
Pump Time 117 mins Total clean fluid 9719 bbls Total slurry volume 10176 bbls
Sand pumped: Sand 100 – 31,885 lbs Sand 40/70 – 388,983 lbs TOTAL:420,868 lbs

STAGE 2: 13507, 13447, 13387, 13327, 13267

6 jspf, .41 dia hole. Total bbls pmpd: 541 bbls, max pressure 2497 psi

PUMP STAGE 2:

Sand in formation 419,808 lbs: 100% Test lines to 9500 psi.
Equalize/open well @ 1557 psi. Avg Rate: 90.1 bpm Avg Pressure 5733 psi
Max rate: 91.3 bpm Max Pressure 8617 psi ISIP 2048 psi
Pump Time: 116 mins. Total clean fluid:9115 bbls Total Slurry volume:9575 bbls
Sand pumped: Sand 100 – 33,501 lbs, Sand 40/70: 389,559 lbs TOTAL: 423,060 lbs

STAGE 3: 13205, 13147, 13087, 13027, 12967

6 jspf, .41 dia hole. Total bbls pmpd: 240 bbls. Max pressure: 2390 psi

PUMP STAGE 3

Sand in formation 419,808 lbs, 100% Prime up & test lines to 9500psi.
Equalize/open well @ 1554 psi. Ave Rate: 86.0 bpm Ave Pressure: 5760 psi
Max Rate:90.0 bpm, Max Pressure: 9013 psi. ISIP: 2461 psi.
Pump Time: 124 mins. Total clean fluid: 9008 bbls. Total slurry volume:9458 bbls
Sand Pumped: Sand 100 –32,765 lbs, Sand 40/70: 385,012 lbs. TOTAL: 417,777 lbs

STAGE 4: 12907, 12847, 12787, 12727, 12667

6 JSPF, .41 dia hole. . Max press of 2819 psi w/297 bbls pumped.

PUMP STAGE 4:

Sand in formation 419,808 lbs, 100% Prime up & test lines to 9500 psi.
Equalize/open well @ 1647 psi. Avg Rate: 89.9 bpm, Avg Pressure: 6183 psi.
Max Rate: 90.2 bpm, Max Pressure: 8705 psi. ISIP:2099 psi.
Pump Time: 117 mins. Total clean fluid: 9071 bbls, Total slurry volume: 9525 bbls
Sand pumped: Sand 100: 32,123 lbs, Sand 40/70L 388,413 lbs, TOTAL: 421,536 lbs

STAGE 5: 12607, 12547, 12487, 12423, 12367

6 JSPF, .41 dia hole. Pump dn @ 12 bpm. . Max pressure of 2494psi w/276 bbls pumped.

PUMP STAGE 5:

Sand in formation: 419,808 lbs, 100%, Prime up & test lines to 9500psi.
Equalize/open well @165 psi. Ave Rate: 86.0 bpm, Avg pressure:5442 psi
Max Rate:86.0 bpm, Max Pressure: 8642 psi. ISIP: 2177 psi.
Pump Time: 120 mins. Total clean fluid:8902 bbls, Total Slurry volume:9354 bbls
Sand pumped: Sand 100:32,628 lbs, Sand 40/70:387,683 lbs, TOTAL: 420,311 lbs

STAGE 6: 12307, 12247, 12187, 12127, 12067

6 JSPF, .41 dia hole. Pump dn @ 12 bpm. Max Pressure of 2361 psi w/228 bbls pumped.

PUMP STAGE 6:

Sand in formation: 419,808 lbs, 100%. Prime up & test lines to 9500 psi.

Equalize/open well @ 1588 psi. Ave Rate: 90.0 bpm, Ave Pressure: 5840 psi.

Max rate: 90.0 bpm, Max Pressure: 8686 psi. ISIP: 2485 psi.

Pump time: 117 mins. Total clean fluid: 9217 bbls, Total Slurry volume: 9669 bbls

Sand pumped: sand 100: 32,178 lbs, sand 40/70: 388,331 lbs. TOTAL: 420,509 lbs

STAGE 7: 12004, 11947, 11887, 11827, 11767

6 JSPF, .41 dia hole. Pump dn @ 12 bpm. . Max pressure of 2865 psi w/173 bbls pumped.

PUMP STAGE 7:

Sand in formation: 419,808 lbs 101 %, Prime up & test lines to 9500 psi.

Equalize/open hole @ 1651 psi. Ave rate: 84.6 bpm, Ave Pressure: 5677 psi

Max rate: 85.7 bpm, Max Pressure: 8330 psi. ISIP: 2058 psi.

Pump time: 125 mins. Total clean fluid: 8913 bbls, Total slurry volume: 9366 bbls.

Sand Pumped: Sand 100: 32,586 lbs, Sand 40/70: 388,215 lbs, TOTAL: 420,801 lbs

STAGE 8: 11707, 11647, 11587, 11527, 11467

6 JSPF, .41 dia hole. Pump dn @ 12 bpm. Max pressure of 3252 psi w/212 bbls pumped.

PUMP STAGE 8:

Sand in formation: 419,808 lbs, 100%, Prime up & test lines to 9500 psi.

Equalize/open hole @ 1632 psi. Ave Rate: 85.0 bpm, Ave pressure: 5883 psi

Max Rate: 86.0 bpm, Max pressure: 8518 psi. ISIP: 2395 psi.

Pump time: 121 mins. Total clean fluid: 8900 bbls, Total slurry volume: 9354 bbls

Sand pumped: Sand 100: 32,718 lbs, Sand 40/70: 388,309 lbs. TOTAL 421,027 lbs

STAGE 9: 11407, 11347, 11287, 11221, 11167

6 JSPF, .41 dia hole. Pump dn @ 12 bpm. Max pressure of 2277 psi w/142 bbls pumped.

PUMP STAGE 9:

Sand in Formation: 419,808 lbs, 100% Prime up & test lines to 9500 psi.

Equalize/open well @ 1677 psi. Ave Rate: 89.9 bpm, Ave Pressure: 5541 psi.

Max rate: 90.2 bpm, Max pressure: 8708 psi. ISIP: 2275 psi.

Pump time: 118 mins. Total Clean fluid: 9033 bbls, Total slurry volume: 9486 bbls

Sand pumped: Sand 100: 33,030 lbs, Sand 40/70: 387,446 lbs. TOTAL: 420,476 lbs

STAGE 10: 11107, 11047, 10989, 10927, 10867

6 JSPF, .41 dia hole. Pump dn @ 12 bpm. Max press of 2451 psi w/135 bbls pumped.

PUMP STAGE 10:

Sand in formation: 419,808 lbs, 100% Prime up and test lines to 9500 psi.

Equalize/open well @ 1580 psi. Ave Rate: 89.8 bpm, Ave Pressure: 6173 psi.

Max Rate: 90.5 bpm, Max pressure: 8554 psi. ISIP: 2210 psi.

Pump time: 115 mins. Total clean fluid: 8965 bbls, Total slurry volume: 9416 bbls

Sand pumped: Sand 100: 32,620 lbs, Sand 40/70: 387,187 lbs. TOTAL 419,807 lbs

STAGE 11: 10807, 10747, 10687, 10627, 10567

6 JSPF, .41 dia hole. Pump dn @ 12 bpm. Max Press 2562 psi w/122 bbls pumped.

PUMP STAGE 11:

Sand in formation: 419,808 lbs, 100%, Prime up and test lines to 9500 psi.

Equalize/open well @ 1593 psi. Ave Rate: 84.6 bpm. Ave Pressure: 6162 psi.

Max rate: 85.6 bpm, Max pressure: 8237 psi. ISIP: 2277 psi.

Pump time: 121 mins. Total clean fluid: 8880 bbls, total slurry volume 9330 bbls.

Sand pumped: Sand 100: 32,579 lbs, Sand 40/70: 385,898 lbs, TOTAL: 418,877 lbs

STAGE 12: 10507, 10447, 10387, 10327, 10267

6 JSPF, .41 dia hole. Pump dn @ 12 bpm. Max Pressure of 2665 psi w/159 bbls pmped.

PUMP STAGE 12:

Sand in formation: 419,808 lbs, 99% Prime up and test lines to 9500 psi.

Equalize/open well @ 1628 psi. Ave Rate: 85.0 bpm, Ave pressure: 5719 psi

Max rate: 85.0 bpm, Max pressure: 8168 psi, ISIP: 2200 psi.

Pump time: 120 mins, Total clean fluid: 8864 bbls, Total slurry volume: 9316 bbls.

Sand pumped: Sand 100: 32,566 lbs, Sand 40/70: 387,370 lbs, TOTAL: 419,936 lbs.

STAGE 13: 10207, 10145, 10087, 10027, 9967

6 JSPF, .41 dia hole. Pump dn @ 12 bpm. Max pressure of 2549 psi w/95 bbls pumped.

PUMP STAGE 13:

Sand in formation: 419,808 lbs, 99%, Prime up & test lines to 9500 psi.

Equalize/open well @ 1618 psi. Ave Rate: 88.5 bpm, Ave Pressure: 5550 psi.

Max Rate: 89.6 bpm, Max Pressure: 9134 psi. ISIP: 2246 psi.

Pump time: 117 mins. Total clean fluid: 8970 bbls, Total slurry volume: 9423 bbls.

Sand pumped: Sand 100: 33,608 lbs, Sand 40/70: 386,834 lbs TOTAL: 420,442 lbs

STAGE 14: 9908, 9847, 9790, 9727, 9669

6 JSPF, .41 dia hole. Pump down @ 15 bpm. Max press of 2915 psi w/71 bbls pumped.

PUMP STAGE 14:

Sand in formation: 419,808lbs 100%. Prime up & test lines to 9500 psi.

Equalize/open hole W 1975 psi. Ave rate: 87.6 bpm, Ave Press: 5169 psi

Max Rate: 89.0 bpm, Max pressure: 8916 psi. ISIP: 2253 psi.

Pump time: 118 mins. Total clean fluid: 8912 bbls, Total slurry volume: 9363 bbls.

Sand pumped: Sand 100: 32,033 lbs, Sand 40/70: 387,065 lbs, TOTAL 419,098 lbs.

STAGE 15: 9607, 9547, 9487, 9427, 9367

6 JSPF, .41 dia hole. Pump dn @ 12 bpm. Max press 2600 psi @ 60 bbls pumped.

PUMP STAGE 15:

Sand in formation: 419808 lbs, 100%. Prime up & test lines to 9500 psi.

Equalize/open well @ 1601 psi. Ave Rate: 89.3 bpm, Ave Pressure: 5047 psi.

Max Rate: 89.8 bpm, Max pressure: 8593 psi, ISIP: 2206 psi.

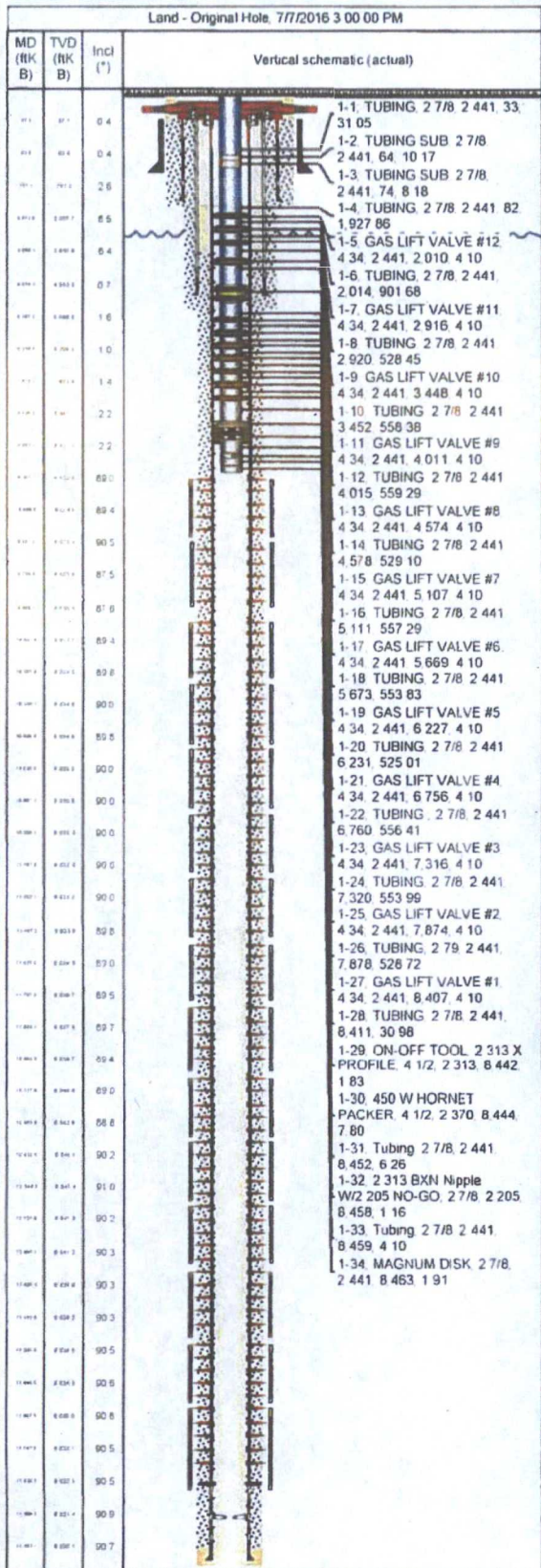
Pump time 121 mins, Total clean fluid: 8868 bbls, Total slurry volume: 9307 bbls

Sand pumped: Sand 100: 32,678 lbs, Sand 40/70: 375,442 lbs, TOTAL 408,120 lbs



Tubing Summary

Well Name SALADO DRAW WE 23 FED P7 004H	Lease SD 23 FED P7	Field Name JENNINGS	Business Unit Mid-Continent	
Ground Elevation (ft) 3,165.00	Original RKB Elevation (ft) 3,197.60	Current RKB Elevation 3,197.60, 3/28/2016	Mud Line Elevation (ft)	Water Depth (ft)
Current KB to Ground (ft) 32.60	Current KB to Mud Line (ft)	Current KB to Csg Flange (ft)	Current KB to Tubing Head (ft)	

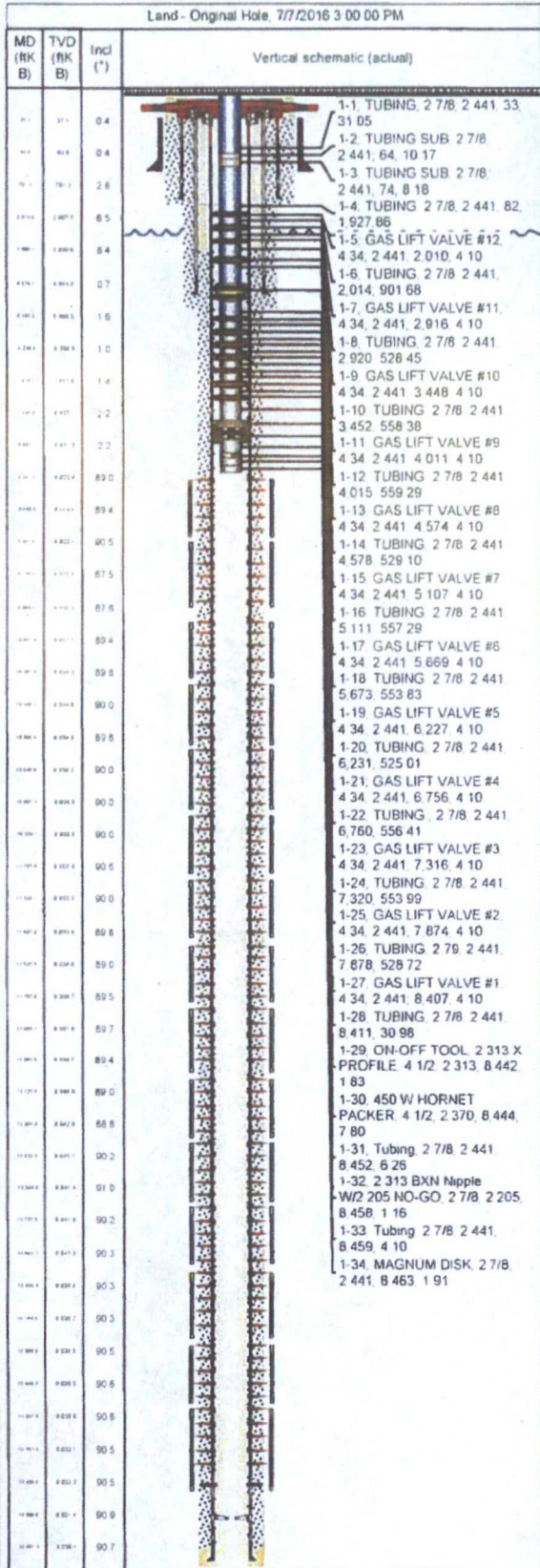


Tubing Strings									
Tubing Description		Planned Run?		Set Depth (MD) (ftKB)		Set Depth (TVD) (ftKB)			
TUBING		N		8,465.2		8,443.4			
Run Date		Run Job		Pull Date		Pull Job			
7/7/2016		Complete, 6/12/2016 06:00							
Jts	Item Des	OD (in)	ID (in)	Wt (lb/ft)	Grade	Top Thread	Len (ft)	Top (ftKB)	Botm (ftKB)
1	TUBING	2 7/8	2.441	6.50	L-80	8RD	31.05	32.6	63.6
1	TUBING SUB	2 7/8	2.441	6.50	L-80	8RD	10.17	63.6	73.8
1	TUBING SUB	2 7/8	2.441	6.50	L-80	8RD	8.18	73.8	82.0
62	TUBING	2 7/8	2.441	6.50	L-80	8RD	1,927.86	82.0	2,009.8
1	GAS LIFT VALVE #12	4.335	2.441			8RD	4.10	2,009.8	2,013.9
17	TUBING	2 7/8	2.441	6.50	L-80	8RD	901.68	2,013.9	2,915.6
1	GAS LIFT VALVE #11	4.335	2.441			8RD	4.10	2,915.6	2,919.7
18	TUBING	2 7/8	2.441	6.50	L-80	8RD	528.45	2,919.7	3,448.1
1	GAS LIFT VALVE #10	4.335	2.441			8RD	4.10	3,448.1	3,452.2
18	TUBING	2 7/8	2.441	6.50	L-80	8RD	558.38	3,452.2	4,010.6
1	GAS LIFT VALVE #9	4.335	2.441			8RD	4.10	4,010.6	4,014.7
17	TUBING	2 7/8	2.441	6.50	L-80	8RD	559.29	4,014.7	4,574.0
1	GAS LIFT VALVE #8	4.335	2.441			8RD	4.10	4,574.0	4,578.1
18	TUBING	2 7/8	2.441	6.50	L-80	8RD	529.10	4,578.1	5,107.2
1	GAS LIFT VALVE #7	4.335	2.441			8RD	4.10	5,107.2	5,111.3
18	TUBING	2 7/8	2.441	6.50	L-80	8RD	557.29	5,111.3	5,668.6
1	GAS LIFT VALVE #6	4.335	2.441			8RD	4.10	5,668.6	5,672.7
18	TUBING	2 7/8	2.441	6.50	L-80	8RD	563.83	5,672.7	6,226.5
1	GAS LIFT VALVE #5	4.335	2.441			8RD	4.10	6,226.5	6,230.6
17	TUBING	2 7/8	2.441	6.50	L-80	8RD	525.01	6,230.6	6,755.6
1	GAS LIFT VALVE #4	4.335	2.441			8RD	4.10	6,755.6	6,759.7
18	TUBING	2 7/8	2.441	6.50	L-80	8RD	556.41	6,759.7	7,316.2
1	GAS LIFT VALVE #3	4.335	2.441			8RD	4.10	7,316.2	7,320.3
18	TUBING	2 7/8	2.441	6.50	L-80	8RD	553.99	7,320.3	7,874.2
1	GAS LIFT VALVE #2	4.335	2.441			8TRD	4.10	7,874.2	7,878.3
17	TUBING	2 7/8	2.441	6.50	L-80	8RD	528.72	7,878.3	8,407.1
1	GAS LIFT VALVE #1	4.335	2.441			8RD	4.10	8,407.1	8,411.2
1	TUBING	2 7/8	2.441	6.50	L-80	8RD	30.98	8,411.2	8,442.1
1	ON-OFF TOOL 2 313 X PROFILE	4 1/2	2.313			8RD	1.83	8,442.1	8,444.0
1	450 W HORNET PACKER	4 1/2	2.370			8RD	7.80	8,444.0	8,451.8
1	Tubing	2 7/8	2.441	6.50	L-80	8RD	6.26	8,451.8	8,458.0
1	2 313 BXN Nipple W/2 205 NO-GO	2 7/8	2.205			8RD	1.16	8,458.0	8,459.2



Tubing Summary

Well Name SALADO DRAW WE 23 FED P7 004H	Lease SD 23 FED P7	Field Name JENNINGS	Business Unit Mid-Continent	
Ground Elevation (ft) 3,165.00	Original RKB Elevation (ft) 3,197.60	Current RKB Elevation 3,197.60, 3/28/2016	Mud Line Elevation (ft)	Water Depth (ft)
Current KB to Ground (ft) 32.60	Current KB to Mud Line (ft)	Current KB to Csg. Flange (ft)	Current KB to Tubing Head (ft)	



Jts	Item Des	OD (in)	ID (in)	Wt (lb/ft)	Grade	Top Thread	Len (ft)	Top (ftKB)	Botm (ftKB)
1	Tubing	2 7/8	2 441	6.50	L-80	8RD	4.10	8,459.2	8,463.3
1	MAGNUM DISK	2 7/8	2 441			8RD	1.91	8,463.3	8,465.2
Rod Strings									
Rod Description		Planned Run?			Set Depth (ftKB)			Set Depth (TVD) (ftKB)	
Run Date		Run Job			Pull Date			Pull Job	
Rod Components									
Jts	Item Des	OD (in)	Grade	Model	Len (ft)	Top (ftKB)	Botm (ftKB)		