

DISTRICT I
1625 N. French Dr., Hobbs, NM 88240

DISTRICT II
1501 W. Grand Avenue, Artesia, NM 88210

DISTRICT III
1000 Rio Brazos Rd., Aztec, NM 87410

DISTRICT IV
1220 S. St. Francis Dr., Santa Fe, NM 87505

State of New Mexico
Energy, Minerals & Natural Resources Department
OIL CONSERVATION DIVISION
1220 South St. Frances Dr.
Santa Fe, NM 87505

Form C-102
Revised October 12, 2005
Submit to Appropriate District Office
State Lease - 4 Copies
Fee Lease - 3 Copies

☐ AMENDED REPORT

WELL LOCATION AND ACREAGE DEDICATION PLAT

API Number 30-025- 43497	Pool Code 55490	Pool Name Sawyer, San Andres West
Property Code 317157	Property Name CURLY 3 SA UNIT	Well Number 1-01H 101H
GRID No. 310809	Operator Name NEMO FUND I, LLC	Elevation 3966'

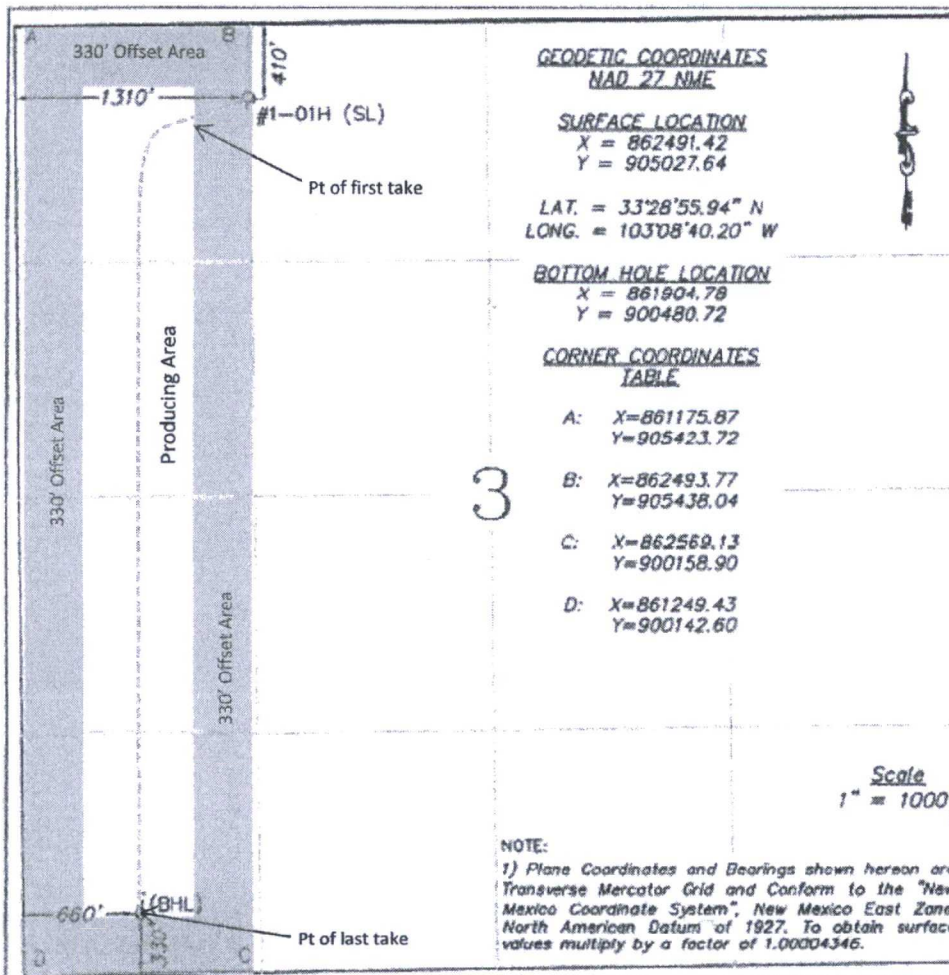
Surface Location

UL or lot No.	Section	Township	Range	Lot Idn	Feet from the	North/South line	Feet from the	East/West line	County
D (Lot 4)	03	10 S	37 E		410	NORTH	1310	WEST	LEA

Bottom Hole Location If Different From Surface

UL or lot No.	Section	Township	Range	Lot Idn	Feet from the	North/South line	Feet from the	East/West line	County
M	03	10 S	37 E		330	SOUTH	660	WEST	LEA
Dedicated Acres 160	Joint or Infill N	Consolidation Code	Order No.						

NO ALLOWABLE WILL BE ASSIGNED TO THIS COMPLETION UNTIL ALL INTERESTS HAVE BEEN CONSOLIDATED OR A NON-STANDARD UNIT HAS BEEN APPROVED BY THE DIVISION



OPERATOR CERTIFICATION

I hereby certify the information contained herein is true and complete to the best of my knowledge and belief, and that this organization either owns a working interest or undivided mineral interests in the land including the proposed bottom hole location or has a right to drill this well at this location pursuant to a contract with an owner of such a mineral or working interest, or to a voluntary pooling agreement or a compulsory pooling order heretofore entered by the division.

Signature *DJ Holcomb* **Date** 12/14/2016
Danny J. Holcomb - Agent
Printed Name

SURVEYOR CERTIFICATION

I hereby certify that the well location shown on this plat was plotted from field notes of actual surveys made by me or under my supervision and that the same is true and correct to the best of my belief.

December 2, 2016

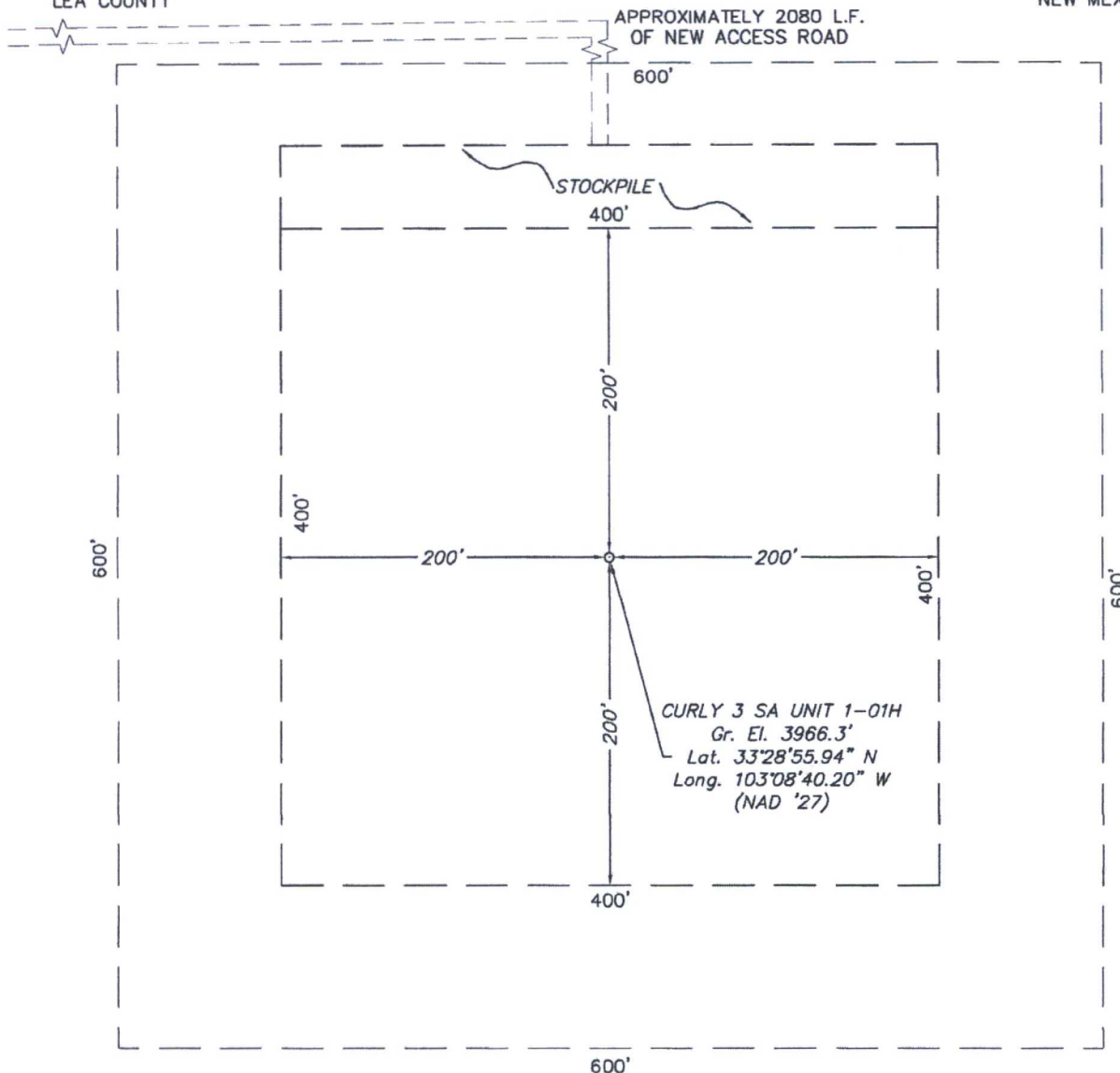
Date of Survey SC
Signature & Seal of *Linda K. Byers*
W.O. Num. 2016-0596-2
Certificate No. Linda K. Byers 23263

SECTION 03, TOWNSHIP 10 SOUTH, RANGE 37 EAST, N.M.P.M.

LEA COUNTY

NEW MEXICO

2016-0596-28



DRIVING DIRECTIONS

FROM THE INTERSECTION OF STATE HIGHWAY 206 AND U.S. HIGHWAY 380 IN TATUM, NEW MEXICO, GO EAST ON U.S. HIGHWAY 380 4.0 MILES TO BLEDSOE HWY. / CO. RD. 125 ON NORTH (LEFT) SIDE OF THE HIGHWAY. THEN GO NORTH AND NORTHEAST 18.5 MILES TO A LEASE ROAD ON THE WEST (LEFT) SIDE OF THE ROAD, THEN GO WEST ON LEASE ROAD 1.10 MILES TO A POINT APPROXIMATELY 0.65 MILE NORTH OF THE PROPOSED LOCATION.

NEMO Fund I, LLC

CURLY 3 SA UNIT 1-01H

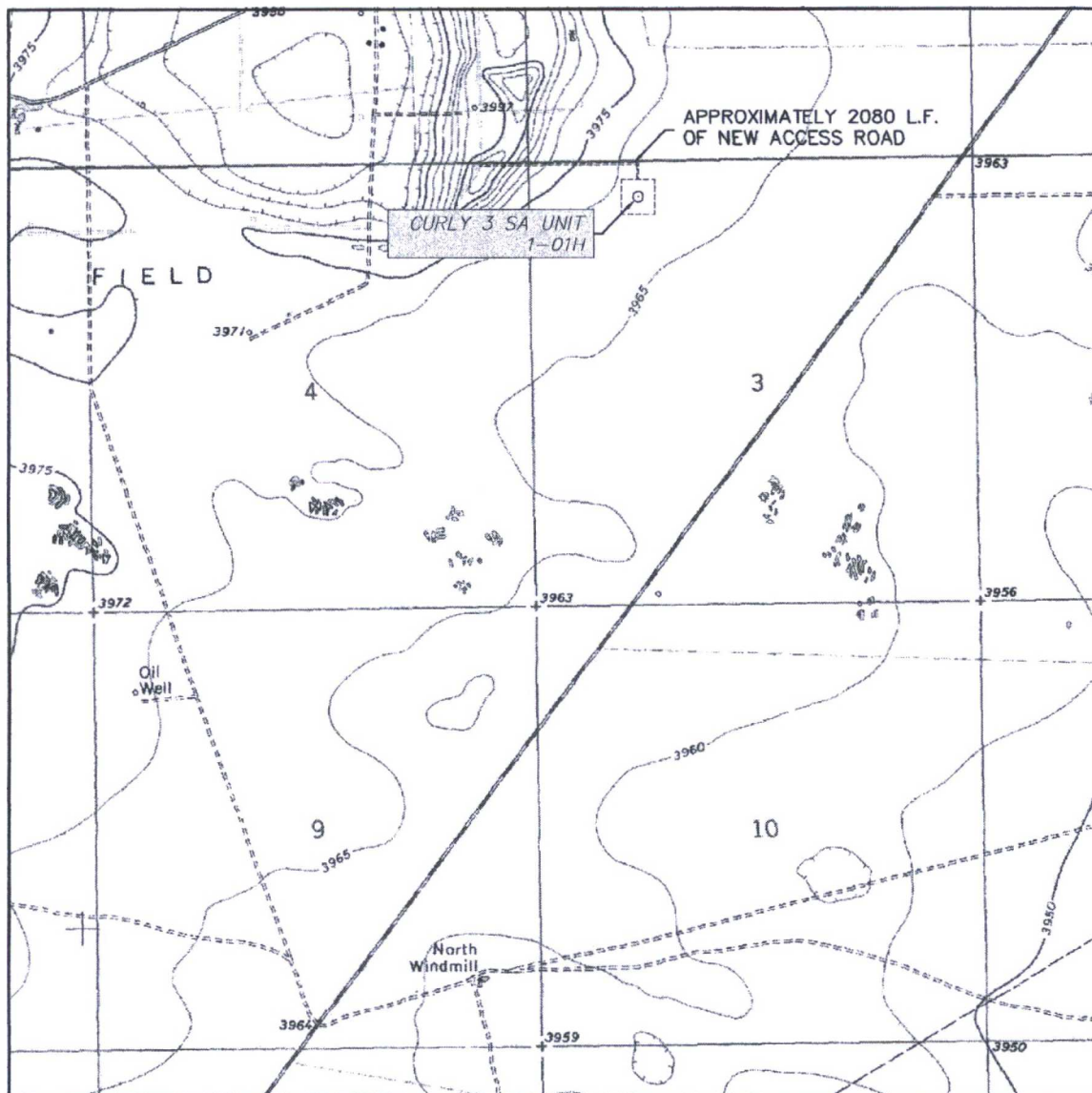
Located 410' FNL & 1310' FWL, Section 03
Township 10 South, Range 37 East, N.M.P.M.
Lea County, New Mexico



SURVEYORS - ENGINEERS - PLANNERS
FIRM REGISTRATION NUMBER: 100682-00
110 W. LOUISIANA AVE., SUITE 110
MIDLAND, TEXAS 79701
(432) 687-0865 - FAX (432) 687-0868

Drawn By: SC	Date: December 8, 2016
Scale: 1" = 100'	Field Book: 1003/ 38
Revision Date: 12-12-2016	Quadrangle: Lea
W.O. No: 2016-0596	Dwg. No.: 2016-0596-28

LOCATION VERIFICATION MAP



SCALE: 1" = 2000'

CONTOUR INTERVAL:
LEA - 10'

SEC. 03 TWP. 10-S RGE. 37-E

SURVEY N.M.P.M.

COUNTY LEA

DESCRIPTION 410' FNL & 1310' FWL

ELEVATION 3966'

OPERATOR NEMO FUND I, LLC

LEASE CURLY 3 SA UNIT

U.S.G.S. TOPOGRAPHIC MAP

LEA



SURVEYORS - ENGINEERS - PLANNERS
FIRM REGISTRATION NUMBER: 100682-00
110 W. LOUISIANA AVE., SUITE 110
MIDLAND, TEXAS 79701
(409) 883-0855 FAX (409) 883-0856

PROPOSED WELLBORE DIAGRAM

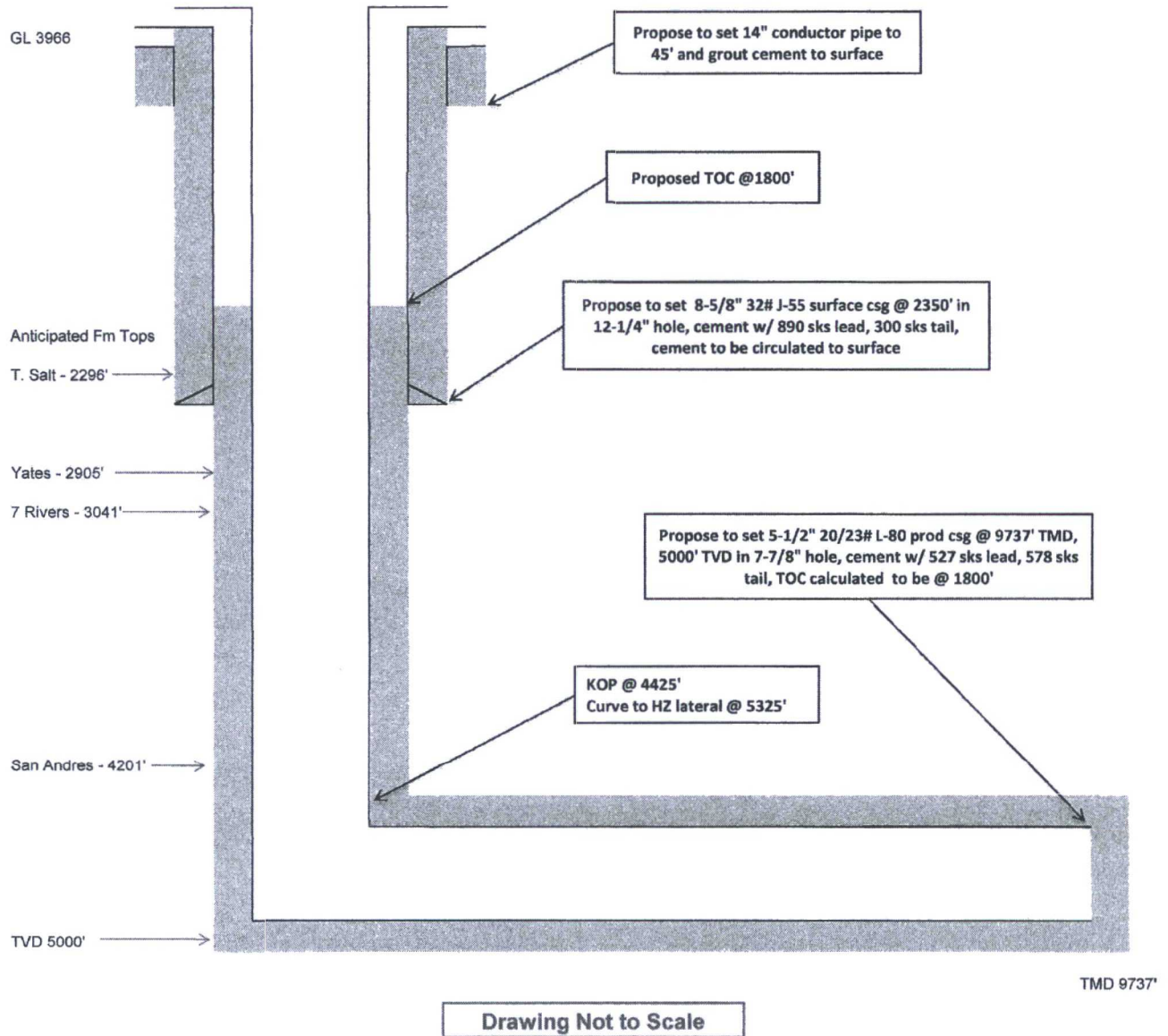
Nemo Fund I, LLC

Curly San Andres Unit 3 #1-01H

API # 30-025-TBD

SL - 410' FNL x 1310' FWL, UL 'D' Sec 3, T10S, R37E, Lea County, NM

BHL - 330' FSL x 660' FWL, UL 'M' Sec 3, T10S, R37E, Lea County, NM



Curly San Andres Unit 3 #1-01H

D-03-10S-37E

Planned Directional Path

