

DISTRICT I
1625 N. French Dr., Hobbs, NM 88240

DISTRICT II
1361 W. Grand Avenue, Artesia, NM 88210

DISTRICT III
1000 Rio Brazos Rd., Artes, NM 87410

DISTRICT IV
1320 S. St. Francis Dr., Santa Fe, NM 87505

State of New Mexico
Energy, Minerals & Natural Resources Department
OIL CONSERVATION DIVISION
1220 South St. Frances Dr.
Santa Fe, NM 87505

Form C-102
Revised October 13, 2005
Submit to Appropriate District Office
State Lease - 4 Copies
Fee Lease - 3 Copies

AMENDED REPORT

WELL LOCATION AND ACREAGE DEDICATION PLAT

API Number 30-025- 43498	Pool Code 14270	Pool Name Crossroads; San Andres, East
Property Code 317158	Property Name LARRY 18 SA UNIT	Well Number 1-03H 103H
OGRID No. 310809	Operator Name NEMO FUND I, LLC	Elevation 3967'

Surface Location

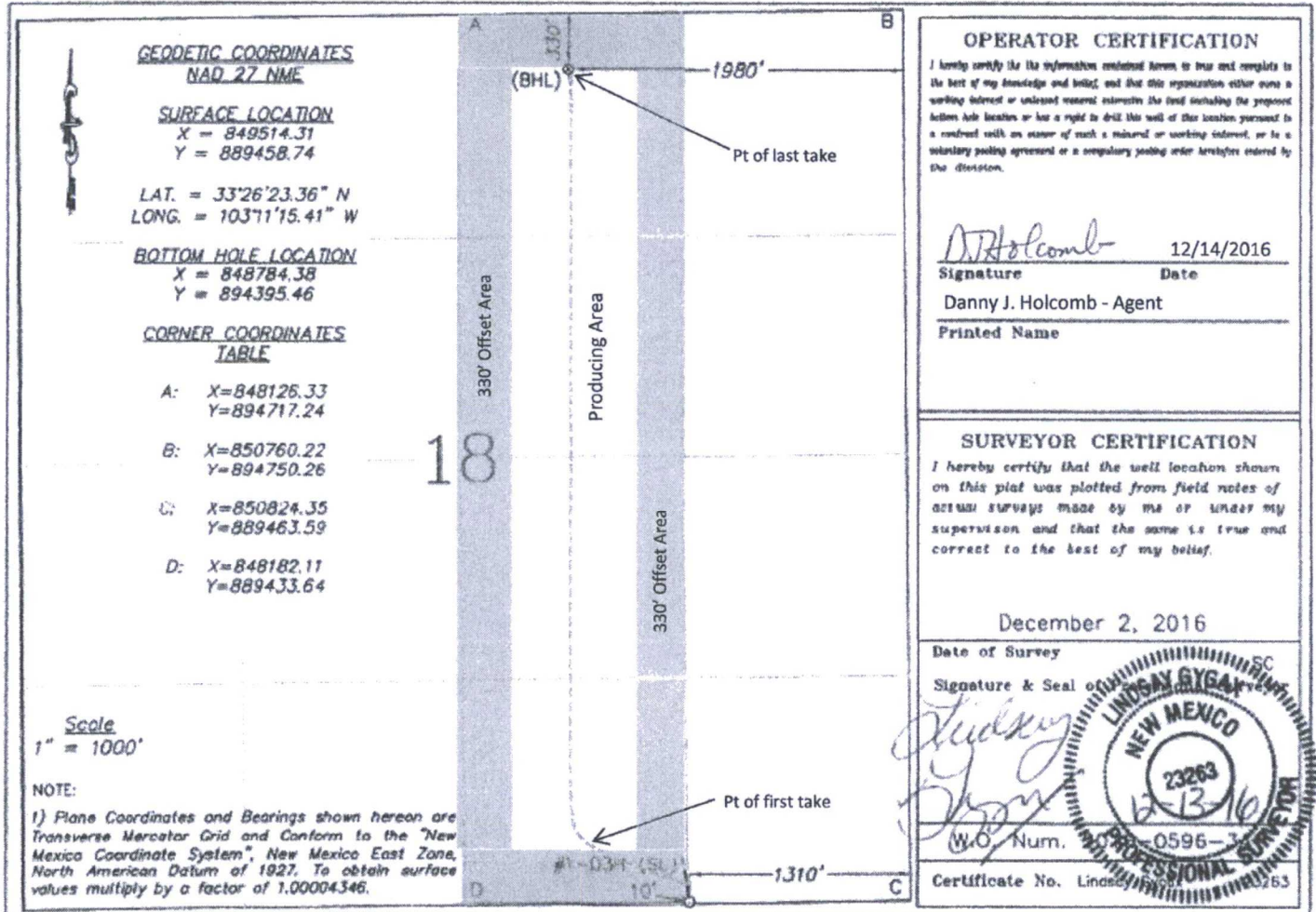
UL or lot No.	Section	Township	Range	Lot Idn	Feet from the	North/South line	Feet from the	East/West line	County
P	18	10 S	37 E		10	SOUTH	1310	EAST	LEA

Bottom Hole Location If Different From Surface

UL or lot No.	Section	Township	Range	Lot Idn	Feet from the	North/South line	Feet from the	East/West line	County
B	18	10 S	37 E		330	NORTH	1980	EAST	LEA

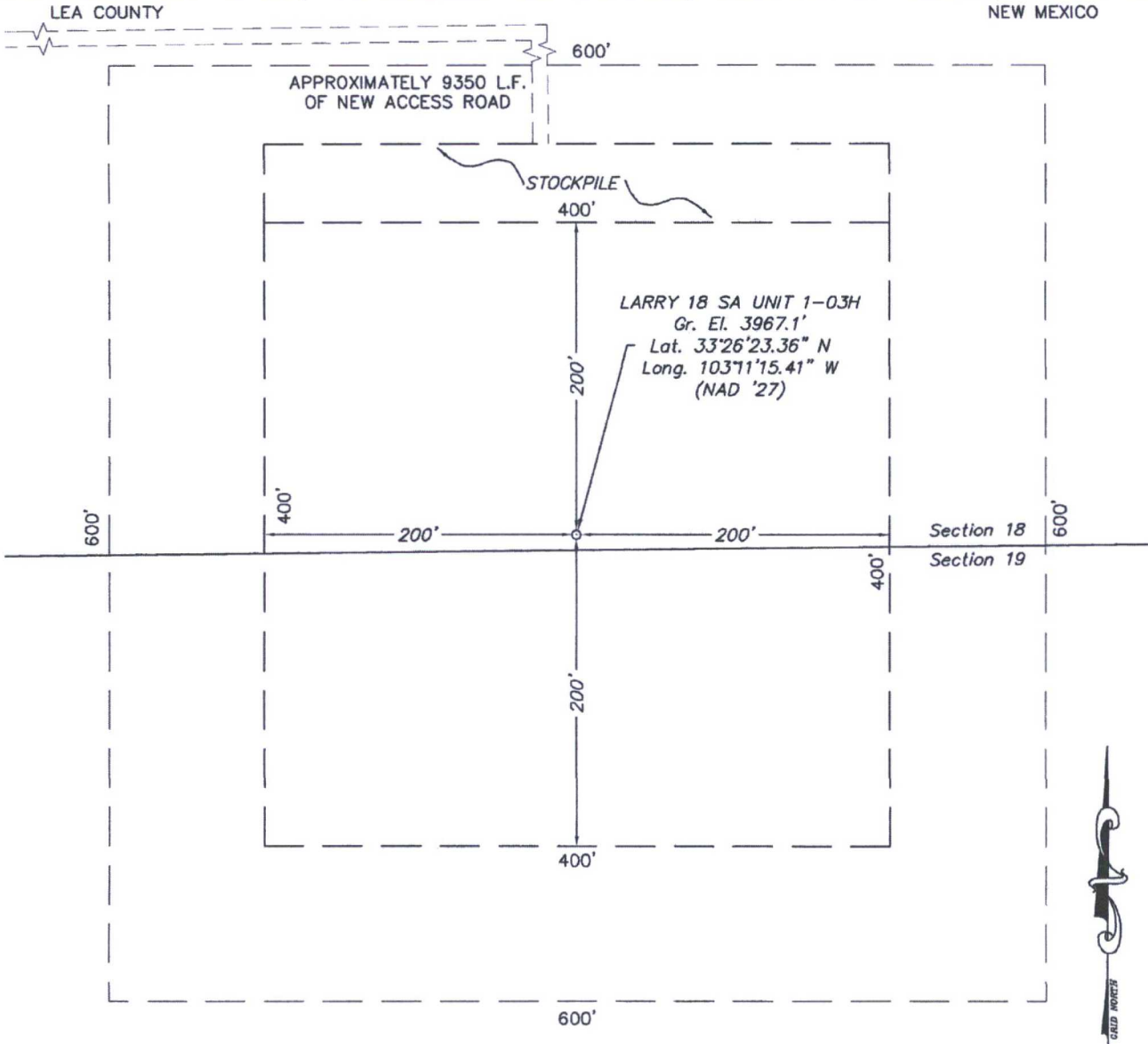
Dedicated Acres	Joint or Infill	Consolidation Code	Order No.
160	N		

NO ALLOWABLE WILL BE ASSIGNED TO THIS COMPLETION UNTIL ALL INTERESTS HAVE BEEN CONSOLIDATED OR A NON-STANDARD UNIT HAS BEEN APPROVED BY THE DIVISION



SECTIONS 18 & 19, TOWNSHIP 10 SOUTH, RANGE 37 EAST, N.M.P.M.

2016-0596-38



DRIVING DIRECTIONS

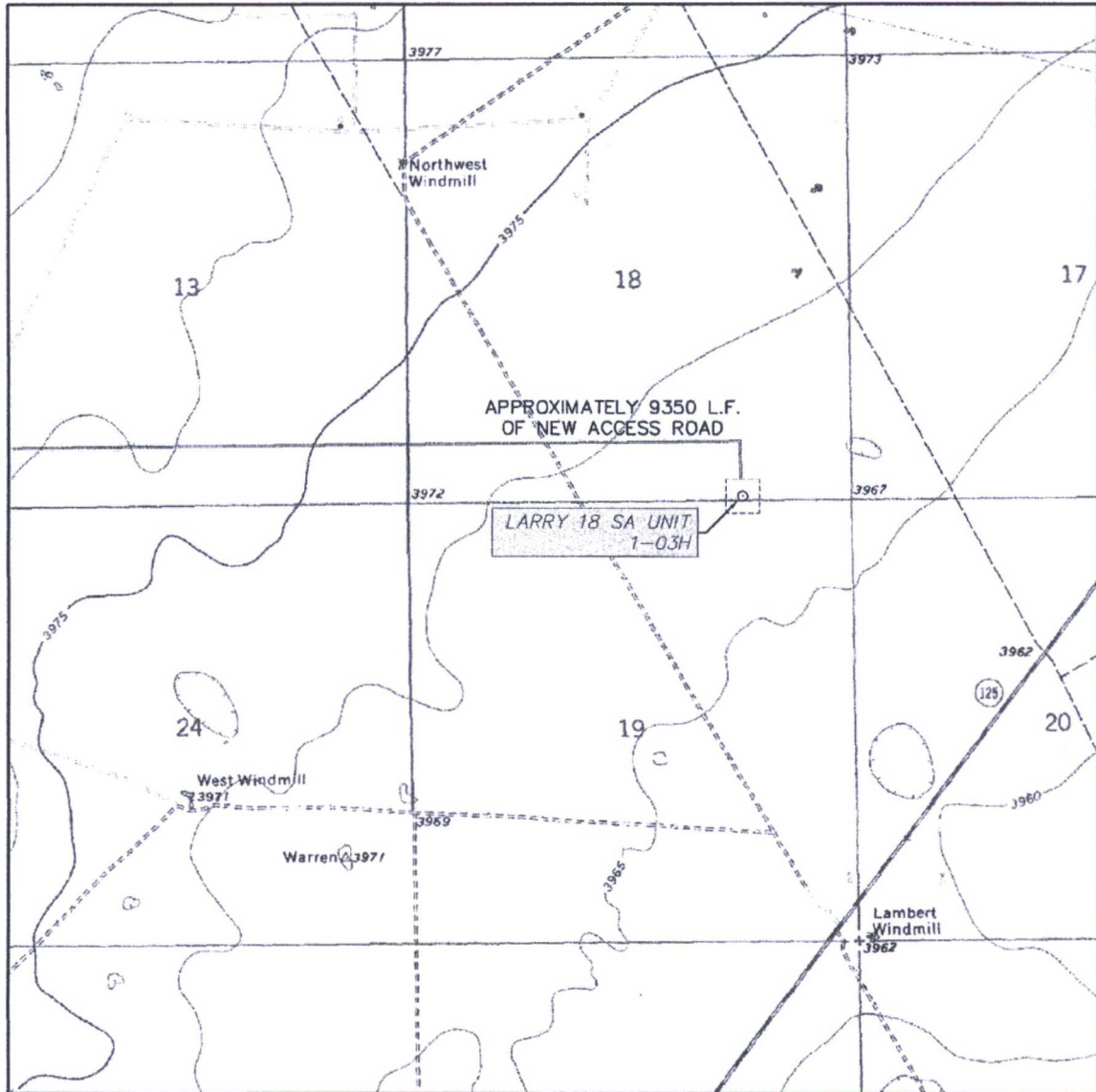
FROM THE INTERSECTION OF STATE HIGHWAY 206 AND U.S. HIGHWAY 380 IN TATUM, NEW MEXICO, GO EAST ON U.S. HIGHWAY 380 4.0 MILES TO BLEDSOE HWY. / CO. RD. 125 ON NORTH (LEFT) SIDE OF THE HIGHWAY. THEN GO NORTH AND NORTHEAST 12.9 MILES TO A LEASE ROAD ON THE WEST (LEFT) SIDE OF THE ROAD, THEN GO NORTHWEST ON LEASE ROAD 0.90 MILE TO A POINT APPROXIMATELY 0.30 MILE SOUTHWEST OF THE PROPOSED LOCATION.

NEMO Fund I, LLC	
LARRY 18 SA UNIT 1-03H	
Located 10' FSL & 1310' FEL, Section 18 Township 10 South, Range 37 East, N.M.P.M. Lea County, New Mexico	
Drawn By: SC	Date: December 7, 2016
Scale: 1" = 100'	Field Book: 1003/ 38
Revision Date: 12-12-2016	Quadrangle: Lea
W.O. No: 2016-0596	Dwg. No.: 2016-0596-38



SURVEYORS - ENGINEERS - PLANNERS
FIRM REGISTRATION NUMBER: 100682-00
 110 W. LOUISIANA AVE., SUITE 110
 MIDLAND, TEXAS 79701
 (432) 687-0865 - FAX (432) 687-0868

LOCATION VERIFICATION MAP



SCALE: 1" = 2000'

CONTOUR INTERVAL:
LEA - 10'

SEC. 18 TWP. 10-S RGE. 37-E

SURVEY N.M.P.M.

COUNTY LEA

DESCRIPTION 10' FSL & 1310' FEL

ELEVATION 3967'

OPERATOR NEMO FUND I, LLC

LEASE LARRY 18 SA UNIT

U.S.G.S. TOPOGRAPHIC MAP

LEA



SURVEYORS - ENGINEERS - PLANNERS
FIRM REGISTRATION NUMBER: 100682-00
 110 W. LOUISIANA AVE., SUITE 110
 MIDLAND, TEXAS 79701
 (409) 687-0885 FAX (409) 687-0888

PROPOSED WELLBORE DIAGRAM

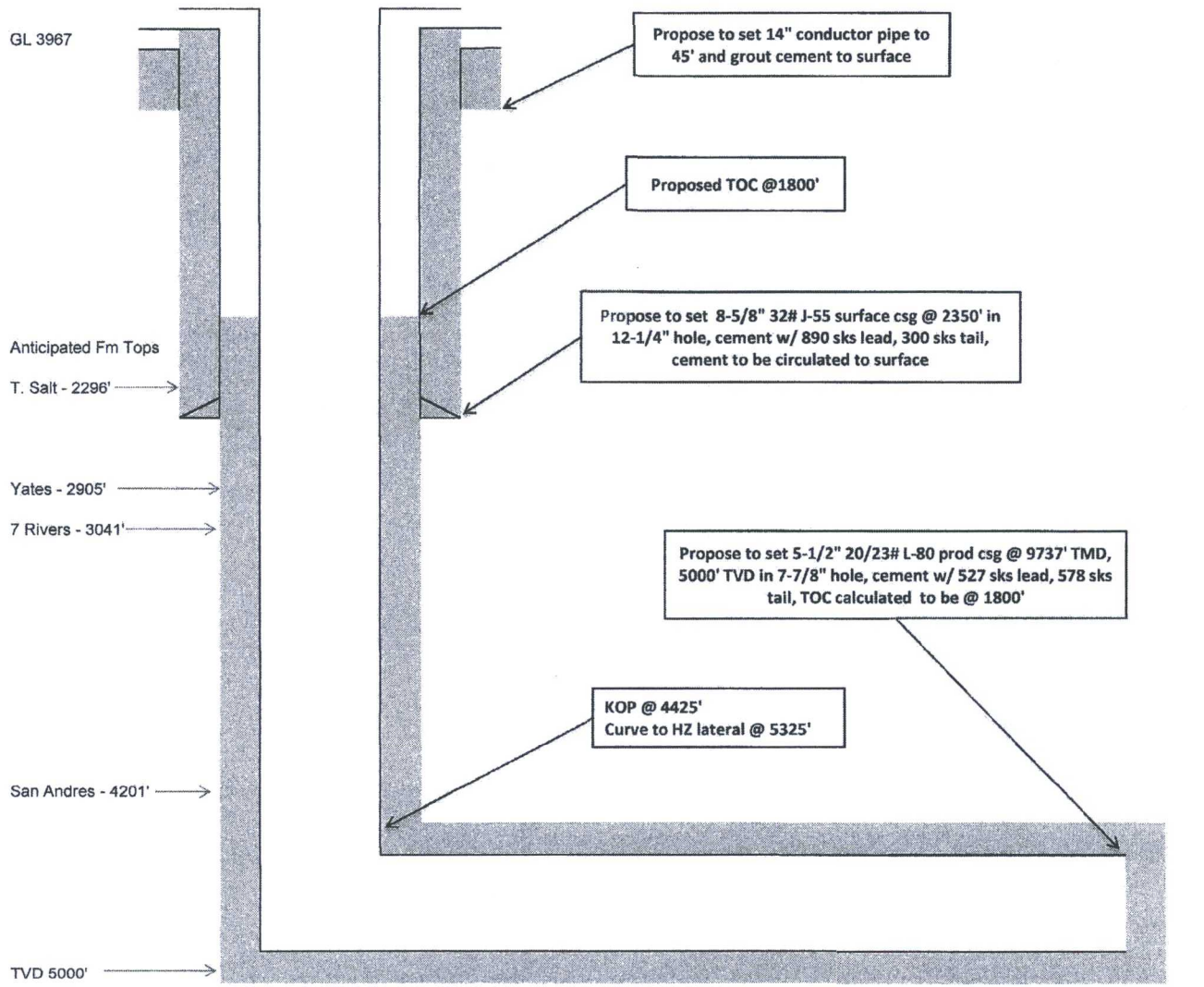
Nemo Fund I, LLC

Larry San Andres Unit 18 #1-03H

API # 30-025-TBD

SL - 10' FSL x 1310' FEL, UL 'P' Sec 18, T10S, R37E, Lea County, NM

BHL - 330' FNL x 1980' FEL, UL 'B' Sec 18, T10S, R37E, Lea County, NM



Drawing Not to Scale

TMD 9737'

Larry San Andres Unit 18 #1-03H

P-18-10S-37E

Planned Directional Path

