

District I
1625 N. French Dr., Hobbs, NM 88240
Phone: (575) 393-6161 Fax: (575) 393-0720
District II
811 S. First St., Artesia, NM 88210
Phone: (575) 748-1283 Fax: (575) 748-9720
District III
1000 Rio Brazos Road, Aztec, NM 87410
Phone: (505) 334-6178 Fax: (505) 334-6170
District IV
1220 S. St. Francis Dr., Santa Fe, NM 87505
Phone: (505) 476-3460 Fax: (505) 476-3462

State of New Mexico
Energy, Minerals & Natural Resources Department
OIL CONSERVATION DIVISION
1220 South St. Francis Dr.
Santa Fe, NM 87505

HOBBS OCD

DEC 13 2016

RECEIVED

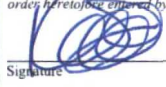
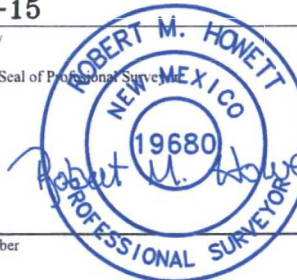
Form C-102
Revised August 1, 2011
Submit one copy to appropriate
District Office

☐ AMENDED REPORT

WELL LOCATION AND ACREAGE DEDICATION PLAT

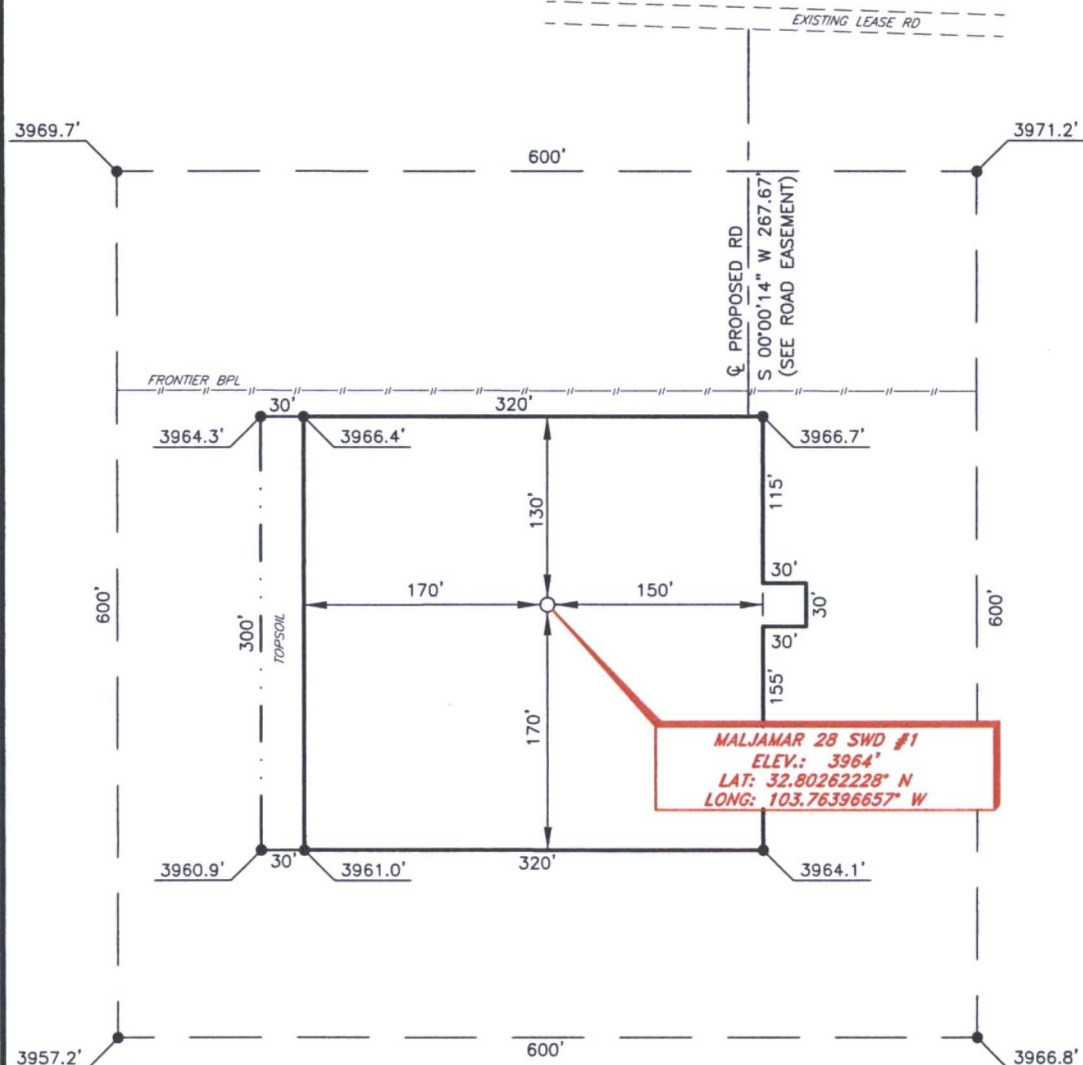
¹ API Number 30-025-43502		² Pool Code 96135		³ Pool Name SWD: Wolfcamp							
⁴ Property Code 317174		⁵ Property Name MALJAMAR 28 SWD		⁶ Well Number 1							
⁷ GRID NO. 229137		⁸ Operator Name COG OPERATING, LLC		⁹ Elevation 3964'							
¹⁰ Surface Location											
UL or lot no. I	Section 28	Township 17S	Range 32E	Lot Idn 1600	Feet from the SOUTH	North/South line 505	East/West line EAST	County LEA			
¹¹ Bottom Hole Location If Different From Surface											
UL or lot no.	Section	Township	Range	Lot Idn	Feet from the	North/South line	Feet from the	East/West line	County		
¹² Dedicated Acres 40									¹³ Joint or Infill	¹⁴ Consolidation Code	¹⁵ Order No.

No allowable will be assigned to this completion until all interest have been consolidated or a non-standard unit has been approved by the division.

¹⁶ (C)		¹⁷ OPERATOR CERTIFICATION	
GEODETTIC DATA NAD 27 GRID - NM EAST SURFACE LOCATION N 656175.9 - E 674947.1 LAT: 32.80262228° N LONG: 103.76396657° W CORNER DATA NAD 27 GRID - NM EAST		I hereby certify that the information contained herein is true and complete to the best of my knowledge and belief, and that this organization either owns a working interest or unleased mineral interest in the land including the proposed bottom hole location or has a right to drill this well at this location pursuant to a contract with an owner of such a mineral or working interest, or to a voluntary pooling agreement or a compulsory pooling order heretofore entered by the division.	
A: FOUND BRASS CAP "1913" N 654562.2 - E 670179.3 B: FOUND BRASS CAP "1913" N 657208.3 - E 670164.6 C: FOUND 1/2" REBAR N 659845.5 - E 670150.8 D: FOUND 1/2" REBAR N 659858.7 - E 675431.5 E: FOUND 2" IRON PIPE N 654576.2 - E 675461.0 F: BRASS CAP "1913" N 654576.3 - E 672820.7		DETAIL "A" 3969.7' 600' 3971.2' 600' S. L. 3957.2' 3966.8' SEE DETAIL "A" S. L. 505' 1600'	
28		Signature  Date 3-9-15 Printed Name Kelly J. Holly E-mail Address kholly@concho.com	
¹⁸ SURVEYOR CERTIFICATION		I hereby certify that the well location shown on this plat was plotted from field notes of actual surveys made by me or under my supervision, and that the same is true and correct to the best of my belief.	
2-20-15		Date of Survey	
Signature and Seal of Professional Surveyor			
19680		Certificate Number	

RRC - Firm No.: TX 10193838 NM 4655451 - Job No.: LS140560

COG OPERATING, LLC
MALJAMAR 28 SWD #1
(1600' FSL & 505' FEL)
SECTION 28, T17S, R32E
N. M. P. M., LEA CO., NEW MEXICO



DIRECTIONS TO LOCATION

From the intersection of State Hwy 529 and CR-126 (Maljamar Rd.)
Go North on CR-126 approx. 1.0 miles to a lease road on the left.
Turn left and go West approx. 0.1 miles to proposed road on left.
Turn left and follow proposed road South approx. 400 feet to this location.

SCALE: 1" = 100'
0 50 100
BEARINGS ARE
NAD 27 GRID - NM EAST
DISTANCES ARE
GROUND.

Firm No.: TX 10193838 NM 4655451

Copyright 2015 - All Rights Reserved

NO.	REVISION	DATE
JOB NO.:	LS140560	
DWG. NO.:	140560PAD	

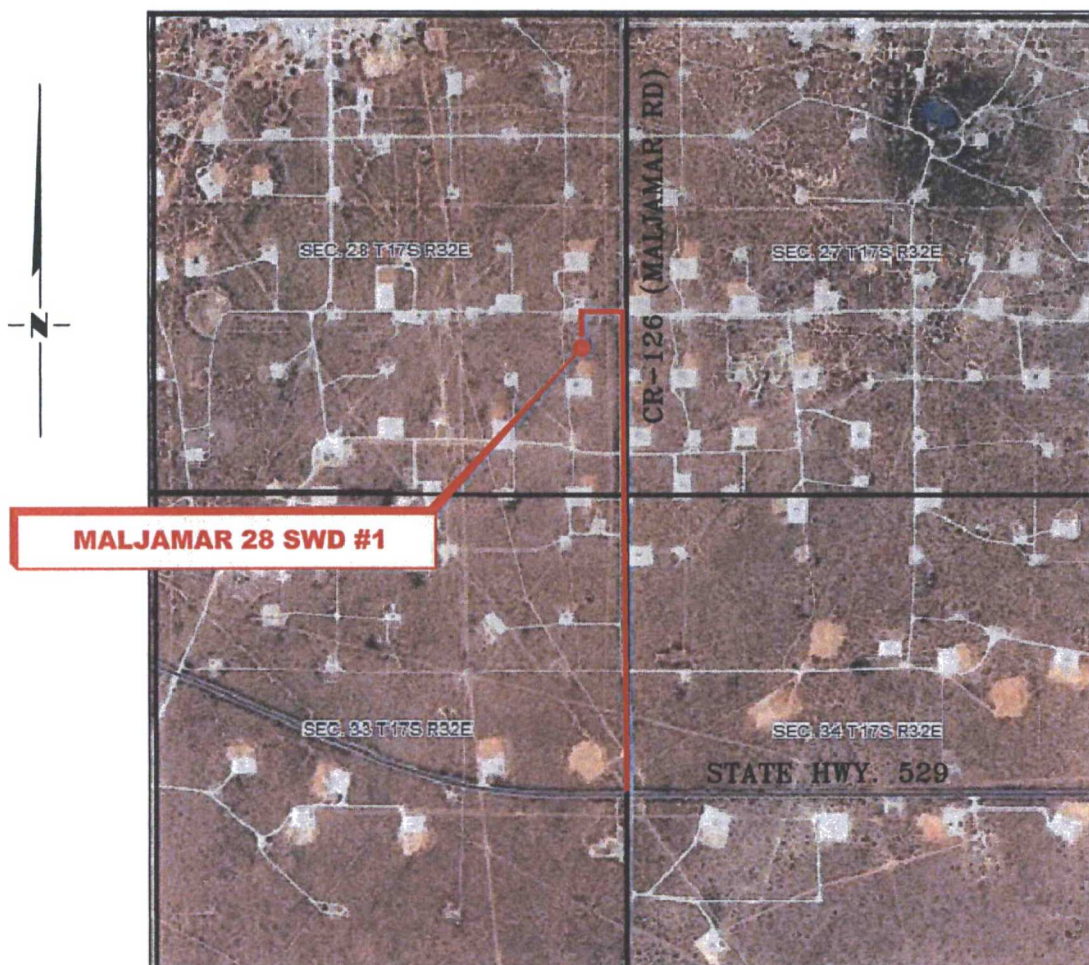
RRC

308 W. BROADWAY ST., HOBBS, NM 88240 (575) 964-8200

SCALE: 1" = 100'
DATE: 2-20-15
SURVEYED BY: GB/BC
DRAWN BY: JC
APPROVED BY: RMH
SHEET : 1 OF 1

VICINITY MAP

NOT TO SCALE



*SECTION 28, TWP. 17 SOUTH, RGE. 32 EAST,
N. M. P. M., LEA CO., NEW MEXICO*

OPERATOR: COG Operating, LLC
LEASE: Maljamar 28 SWD
WELL NO.: 1

LOCATION: 1600' FSL & 505' FEL
ELEVATION: 3964'

Firm No.: TX 10193838 NM 4655451

Copyright 2015 - All Rights Reserved

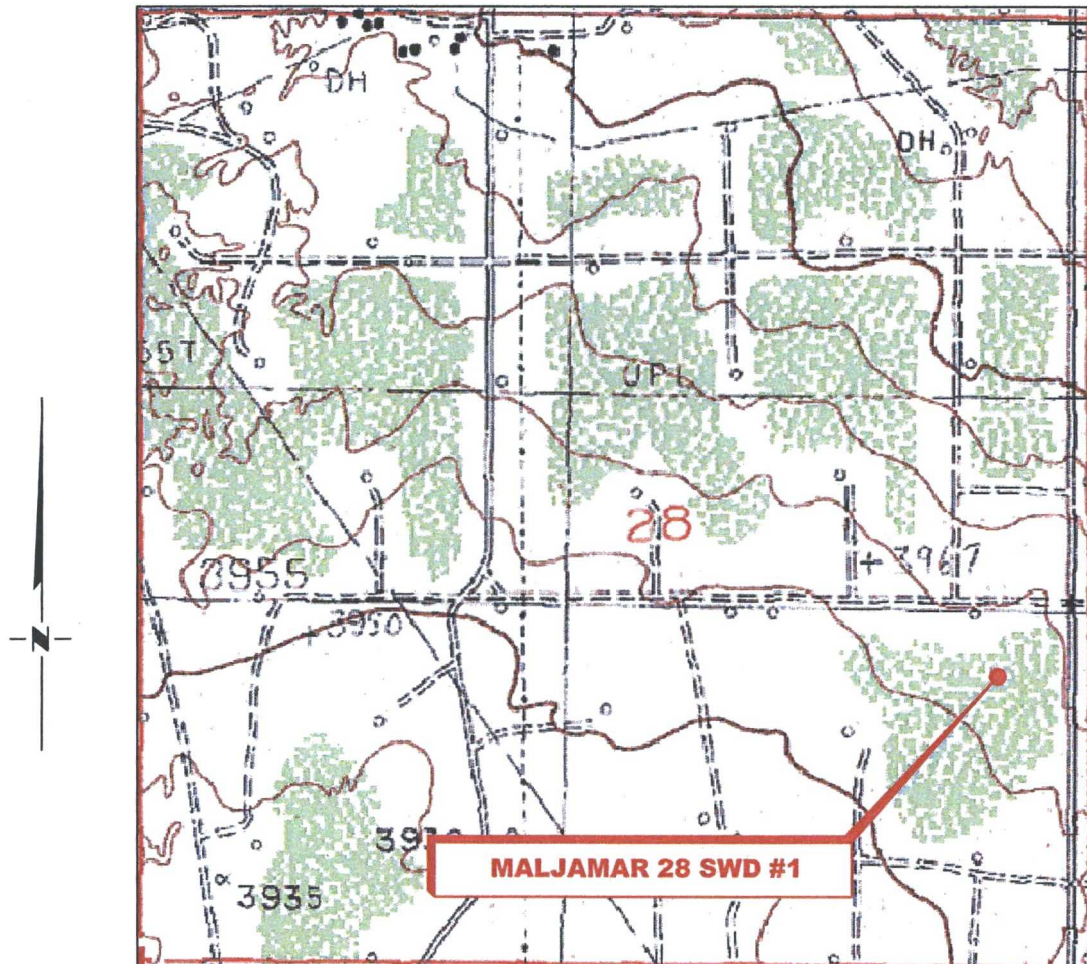
NO.	REVISION	DATE
JOB NO.: LS140560		
DWG. NO.: 140560VM		

RRC

308 W. BROADWAY ST., HOBBS, NM 88240 (575) 964-8200

SCALE: NTS
DATE: 2-20-15
SURVEYED BY: GB/BC
DRAWN BY: JC
APPROVED BY: RMH
SHEET : 1 OF 1

LOCATION VERIFICATION MAP



*SECTION 28, TWP. 17 SOUTH, RGE. 32 EAST,
N. M. P. M., LEA CO., NEW MEXICO*

OPERATOR: COG Operating, LLC
LEASE: Maljamar 28 SWD
WELL NO.: 1
ELEVATION: 3964'

LOCATION: 1600' FSL & 505' FEL
CONTOUR INTERVAL: 10'
USGS TOPO. SOURCE MAP:
Maljamar, NM (P. E. 1985)

Firm No.: TX 10193838 NM 4655451

Copyright 2014 - All Rights Reserved

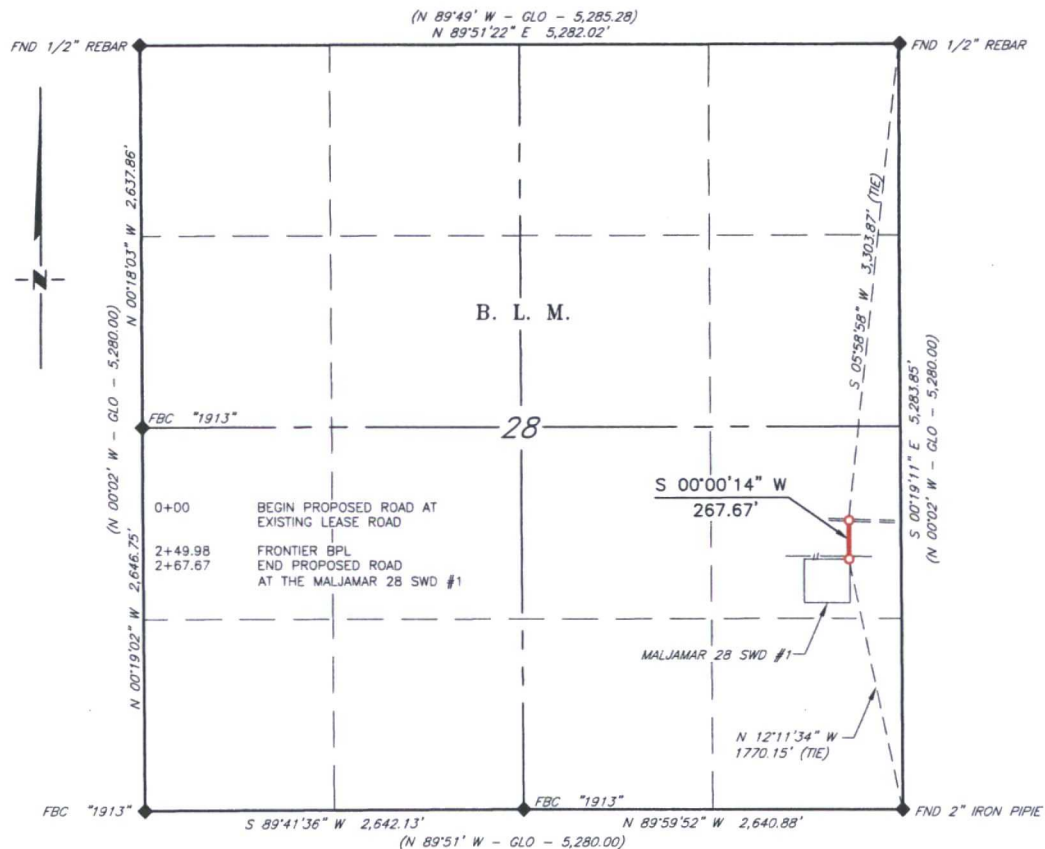
NO.	REVISION	DATE
JOB NO.: LS140560		
DWG. NO.: 140560LVM		

RRC

308 W. BROADWAY ST., HOBBS, NM 88240 (575) 964-8200

SCALE: 1"=1000'
DATE: 2-20-15
SURVEYED BY: GB/BC
DRAWN BY: JC
APPROVED BY: RMH
SHEET : 1 OF 1

COG OPERATING, LLC
PROPOSED ACCESS ROAD FOR THE MALJAMAR 28 SWD #1
SECTION 28, T17S, R32E
N. M. P. M., LEA CO., NEW MEXICO



DESCRIPTION

A strip of land 30 feet wide, being 267.67 feet or 16.222 rods in length, lying in Section 28, Township 17 South, Range 32 East, N. M. P. M., Lea County, New Mexico, being 15 feet left and 15 feet right of the following described survey of a centerline across B. L. M. lands.

BEGINNING at Engr. Sta. 0+00, a point which bears S 05°58'58" W, 3,303.87 feet from a 1/2" rebar found for the Northeast corner of Section 28;

Thence S 00°00'14" W, 267.67 feet, to Engr. Sta. 2+67.67, a point on the Maljamar 28 SWD #1, which bears N 12°11'34" W, 1770.15 feet from a 2" iron pipe, found for the Southeast corner of Section 28.

Said strip of land contains 1.184 acres, more or less and is allocated by forties as follows:

NE 1/4 SE 1/4 16.222 Rods 0.184 Acres

SCALE: 1" = 1000'
 0 500' 1000'
 BEARINGS ARE NAD 27
 NM EAST & DISTANCES ARE
 HORIZ. GROUND.

LEGEND

() RECORD DATA - GLO
 ♦ FOUND MONUMENT AS NOTED
 — PROPOSED ROAD
 — EXISTING BPL

I, R. M. Howett, a N. M. Professional Surveyor, hereby certify that I prepared this plat from an actual survey made on the ground under my direct supervision, said survey and plat meet the Min. Stds. for Land Surveying in the State of N. M. and are true and correct to the best of my knowledge and belief.

Robert M. Howett

Firm No.: TX 10193838 NM 4655451

Robert M. Howett

NM PS 19680

Copyright 2015 - All Rights Reserved

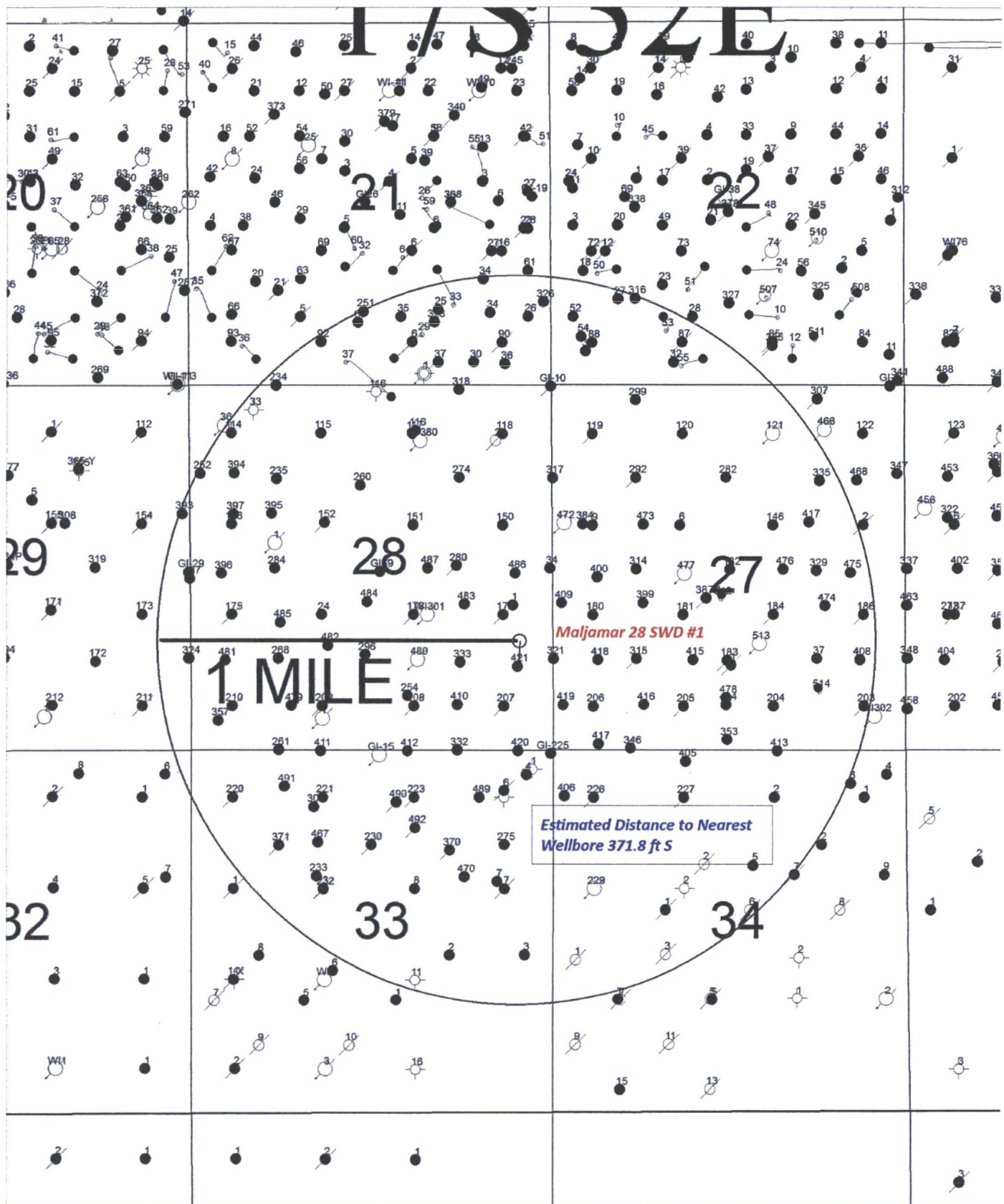


NO.	REVISION	DATE
JOB NO.:	LS140560	
DWG. NO.:	140560RD	

RRC

308 W. BROADWAY ST., HOBBS, NM 88240 (575) 964-8200

SCALE: 1" = 100'
DATE: 2-20-15
SURVEYED BY: GB/BC
DRAWN BY: JC
APPROVED BY: RMH
SHEET : 2 OF 2



		
SENM Shelf Area Maljamar 28 SWD #1		
SEC. 28, T17S - R32E SHL 1600 FSL 505 FEL, UNIT 1		
Author: ldm	Scale:	Date: 9 March, 2015 Lm_RA_1MileRadiusWell_ Map.gmp



Data use subject to license.

© DeLorme. XMap® 7.

www.delorme.com

