

Submit 3 Copies To Appropriate District Office

District I

1625 N. French Dr., Hobbs, NM 88240

District II

1301 W. Grand Ave., Artesia, NM 88210

District III

1000 Rio Brazos Rd., Aztec, NM 87410

District IV

1220 S. St. Francis Dr., Santa Fe, NM 87505

State of New Mexico
Energy, Minerals and Natural Resources

OIL CONSERVATION DIVISION
1220 South St. Francis Dr.
Santa Fe, NM 87505

Form C-103
Revised June 10, 2003

SUNDRY NOTICES AND REPORTS ON WELLS (DO NOT USE THIS FORM FOR PROPOSALS TO DRILL OR TO DEEPEN OR PLUG BACK TO A DIFFERENT RESERVOIR. USE "APPLICATION FOR PERMIT" (FORM C-101) FOR SUCH PROPOSALS.)		WELL API NO. 30-025-27329
1. Type of Well: Oil Well <input type="checkbox"/> Gas Well <input checked="" type="checkbox"/> Other WATER INJECTION		5. Indicate Type of Lease STATE <input checked="" type="checkbox"/> FEE <input type="checkbox"/>
2. Name of Operator ConocoPhillips Company		6. State Oil & Gas Lease No. B-936-18
3. Address of Operator 4001 Penbrook Street Odessa, TX 79762		7. Lease Name or Unit Agreement Name EAST VACUUM GB/SA UNIT TRACT 1903
4. Well Location Unit Letter M : 1300 feet from the SOUTH line and 1200 feet from the WEST line Section 19 Township 17S Range 35E NMPM County LEA		8. Well Number 004
11. Elevation (Show whether DR, RKB, RT, GR, etc.) 3981.6'; GL 3993.6'; RKB		9. OGRID Number 217817
		10. Pool name or Wildcat VACUUM GRAYBURG/SAN ANDRES

12. Check Appropriate Box to Indicate Nature of Notice, Report or Other Data

NOTICE OF INTENTION TO:

PERFORM REMEDIAL WORK ☐ PLUG AND ABANDON ☐

TEMPORARILY ABANDON ☐ CHANGE PLANS ☐

PULL OR ALTER CASING ☐ MULTIPLE COMPLETION ☐

OTHER: ☐

SUBSEQUENT REPORT OF:

REMEDIAL WORK ☐ ALTERING CASING ☐

COMMENCE DRILLING OPNS. ☐ PLUG AND ABANDONMENT ☐

CASING TEST AND CEMENT JOB ☐

OTHER: REPAIR HOLE IN TUBING ON INJECTION WELL ☒

13. Describe proposed or completed operations. (Clearly state all pertinent details, and give pertinent dates, including estimated date of starting any proposed work). SEE RULE 1103. For Multiple Completions: Attach wellbore diagram of proposed completion or recompletion.

REPAIR DOWNHOLE FAILURE:

SEE ATTACHED



I hereby certify that the information above is true and complete to the best of my knowledge and belief.

SIGNATURE Gay Thomas TITLE Regulatory Assistant DATE 04/03/2006

Type or print name Gay Thomas

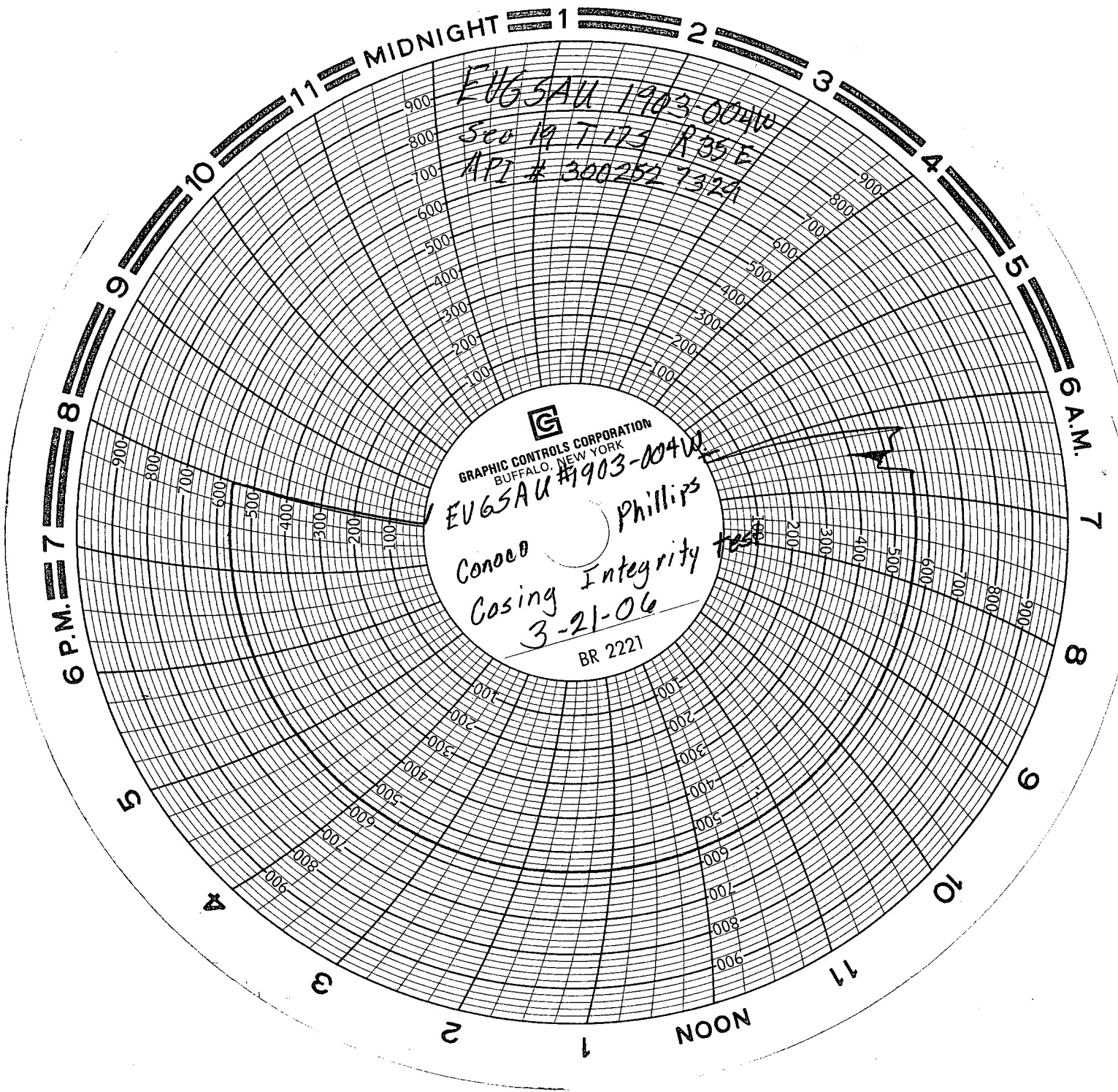
E-mail address: Gay.Thomas@conocophillips.com Telephone No. (432)368-1217

(This space for State use)

APPROVED BY Gay W. Wink

TITLE OC FIELD REPRESENTATIVE II/STAFF MANAGER DATE APR 05 2006

Conditions of approval, if any:



EUGSAU 1903-004W
Sec 19 T123 R35E
API # 300252 7327

GRAPHIC CONTROLS CORPORATION
BUFFALO, NEW YORK
EUGSAU #1903-004W
Conoco Phillips
Casing Integrity test
3-21-06
BR 2221



Daily summary

EAST VACUUM GB-SA UNIT 1903-004W

Job Type: REPAIR DOWNHOLE FAILURE

API/Bottom Hole UWI 300252732900	Field Name DISTRICT - E VACUUM SUB-D	Area BUCKEYE	County LEA	State/Province NEW MEXICO	Operator CONOCOPHILLIPS	License No.
Original KB Elevation (ft) 3,993.60	Ground Elevation (ft) 3,981.60	KB-CF (ft) 3,993.60	KB-TH (ft) 3,993.60	Spud Date 6/24/1981	Rig Release Date 7/7/1981	

Report Date	Last 24hr Sum	Day Total	Cum Cost
3/14/2006 07:00	MIRU Pool DD unit. RU pump truck and pump 30 bbls 10# brine down tubing to kill well. ND wellhead, NU BOP. Release Loc=kset packer @4455' RU Monk tubing scanners and scan tubing OOH laying down 140 jts 2 3/8" tubing. Found 1/2" fluid cut hole in coupling on top of packer. RD scanning tools. RU sand line bailer and TIH & TFF @ 4460 found 113' of fill and all perms were covered. TOOH & lay down bailer. TIH w 40 jts 2 3/8" work string for kill string SDFN.		
3/15/2006 07:00	Arrive on location, hold safety meeting TOOH w 20 stands of work string. RU (Smith) reverse unit. Load pit w 120 bbls fresh water. PU & TIH w 3 7/8" skirted bit w 4- 3 1/8" DC's and 143 jts WS. Tag & drill through bridges @ 4460', 4530', 4553', & tag fill @ 4595'. Clean out to PBTD 4653'. Circulate 90bbls and pull 35 stands WS. Send fill samples Petrolite for analysis SDFN		
3/16/2006 07:00	Arrive on location, hold safety meeting. TOOH w WS & lay down drill collars & bit. RD reverse unit PU & GIH w/ 4 1/2" RTTS packer 2 3/8" SN, 143 jts WS tubing to 4535'. Packer would not set there or @ 4505. Set packer @ 4475'. RU pump truck & pump 55 bbls 15% HCL acid down tubing @ 3.5 bbls/ min @ 1100 PSI. Flush tubing to top perf w/ 19bbls 10# brine @ 1650 PSI, ISIP 650. SI for 1 hr, pressure 100 psi. Bleed off pressure to tank and recovered 10 bbl water. Open bypass and reversed 50 bbls 10#. Reset packer and test casing to 600 psi but would not hold. Lost 100 psi in 1 min. Reset packer @ 4455', 4444', 4435', 4428', 4425', 4415', 4400', and 4380', with same leak. SDFN		
3/17/2006 07:00	Arrive on location, hold safety meeting. Drop 2 3/8" standing valve load and pressure test tubing to 1500psi, bleed off pressure. RU sand line lubricator, TIH w baby red jars and fish & lay down standing valve and sand line equip. Release packer & TOH PU & RIH w RBP to 4478' but would not set. Move RBP up hole to 4446' set RBP. Set packer @ 4375'. Pressure test RBP to 700psi & lost 100 psi/ min. Pressure test casing to 600PSI for 15 min. Release packer & reset @ 4431', 4406', 4390', with 100psi leak per/min. Reset packer @ 4375', pressure tubing to 1500psi with 100 psi leak per/min. Surge off pressure & repressure to 1500 psi, could not pump into zone (possible casing corrosion instead of hole).		
3/20/2006 07:00	Check well for pressure, unset RBP and move up to 4415' and move RTTS packer to 4371', & test to 500 psi, lost 20 # in 30 min. Tested from 4371' to surface-pressure held for 30 min. Unset RTTS packer and test from RBP 4415' to surface pressure held good for 30 min. Release packer and TIH w 1 jt to retrieve RBP. Unset RBP and TOOH laying down tubing, left 40 jts tubing in well for kill string. Shut down due to high wind.		
3/21/2006 07:00	Called Mr. Gary Wink of NMOCD 3-21-06 @ 9:06 AM and explained that we needed to seat packer @ 4415 or 159 ft above perforations. He authorized the packer set depth. Check well for pressure, TOOH w kill string laying down. RU Monk pipe testers PU IPC injection tubing from rack GIH w Lock-set packer and IPC tubing, hydrotesting in hole. Ran 138 jts 8' sub 23' stainless jt. and 4' upset stainless jt and on/off tool. Set packer and pretested for 15 min, tested OK. Released tubing from on/off tool and circulated 70 bbls packer fluid into casing. Jay back onto packer and ND BOP. NU wellhead left 12000# compression on packer. Top off casing with packer fluid and pressure tested annulus with recording chart for 30 min, held OK. Reported results to MNOCD (Sylvia). Connect injection line to well RDMO		