

Submit 3 Copies To Appropriate District Office  
District I  
1625 N. French Dr., Hobbs, NM 88240  
District II  
1301 W. Grand Ave., Artesia, NM 88210  
District III  
1000 Rio Brazos Rd., Aztec, NM 87410  
District IV  
1220 S. St. Francis Dr., Santa Fe, NM 87505

State of New Mexico  
Energy, Minerals and Natural Resources

Form C-103  
May 27, 2004

OIL CONSERVATION DIVISION  
1220 South St. Francis Dr.  
Santa Fe, NM 87505

WELL API NO.	30-025-37463
5. Indicate Type of Lease STATE <input type="checkbox"/> FEE <input checked="" type="checkbox"/>	
6. State Oil & Gas Lease No.	
7. Lease Name or Unit Agreement Name SOUTHLAND ROYALTY A	
8. Well Number	23
9. OGRID Number	00873
10. Pool name or Wildcat Blinebry O&G, Tubb O&G, Drinkard	

**SUNDRY NOTICES AND REPORTS ON WELLS**  
(DO NOT USE THIS FORM FOR PROPOSALS TO DRILL OR TO DEEPEN OR PLUG BACK TO A DIFFERENT RESERVOIR. USE "APPLICATION FOR PERMIT" (FORM C-101) FOR SUCH PROPOSALS.)

1. Type of Well: Oil Well ☒ Gas Well ☐ Other ☐

2. Name of Operator  
Apache Corporation

3. Address of Operator  
6120 South Yale, Suite 1500  
Tulsa, OK 74136-4224

4. Well Location  
Unit Letter I : 2310 feet from the South line and 350 feet from the South line  
Section 4 Township 21S Range 37E NMPM County Lea

11. Elevation (Show whether DR, RKB, RT, GR, etc.)  
3469'

Pit or Below-grade Tank Application ☐ or Closure ☐

Pit type \_\_\_\_\_ Depth to Groundwater \_\_\_\_\_ Distance from nearest fresh water well \_\_\_\_\_ Distance from nearest surface water \_\_\_\_\_

Pit Liner Thickness: \_\_\_\_\_ mil Below-Grade Tank: Volume \_\_\_\_\_ bbls; Construction Material \_\_\_\_\_

12. Check Appropriate Box to Indicate Nature of Notice, Report or Other Data

NOTICE OF INTENTION TO:

PERFORM REMEDIAL WORK ☐ PLUG AND ABANDON ☐  
TEMPORARILY ABANDON ☐ CHANGE PLANS ☐  
PULL OR ALTER CASING ☐ MULTIPLE COMPL ☐

SUBSEQUENT REPORT OF:

REMEDIAL WORK ☐ ALTERING CASING ☐  
COMMENCE DRILLING OPNS. ☐ P AND A ☐  
CASING/CEMENT JOB ☐

OTHER: ☐

OTHER: Downhole Commingle Blinebry, Tubb & Drinkard ☒

13. Describe proposed or completed operations. (Clearly state all pertinent details, and give pertinent dates, including estimated date of starting any proposed work). SEE RULE 1103. For Multiple Completions: Attach wellbore diagram of proposed completion or recompletion.

Pursuant to Division Order 11363

Pool Names: Blinebry Oil & Gas (Oil) 06660, Tubb Oil & Gas (Oil) 60240 & Drinkard 19190

Perforations: BLINEBRY 5675-79, 5760-64, 5832-36 & 5922-26' 2 JSPF  
TUBB 6154-58, 6236-40, 92-96 & 6357-59' 2 JSPF  
DRINKARD 6544-48, 6632-36 & 6680-84' 2 JSPF  
ABO 6862-66, 6912-16, 24-27, 36-44, 49-52, 59-66 & 6970 - 76' 1 JSPF  
(CIBP @ 6900' & 6850')

Allocation is based on subtraction method resulted in the following:

	Test	45 BO	x	565 MCF	x	153 BW
Blinebry	30 BO	67%	169 MCF	30%	62 BW	41%
Tubb	6 BO	13%	84 MCF	15%	37 BW	24%
Drinkard	9 BO	20%	312 MCF	55%	54 BW	35%
Total	45 BO	100%	565 MCF	100%	153 BW	100%

Downhole commingling will not reduce the value of these pools. All ownership and percentages between the pools are identical.

DHC Order No. HOB-0141

I hereby certify that the information above is true and complete to the best of my knowledge and belief. I further certify that any pit or below-grade tank has been/will be constructed or closed according to NMOC guidelines ☐, a general permit ☐ or an (attached) alternative OCD-approved plan ☐.

SIGNATURE Elaine Linton TITLE Engineering Technician DATE 03/20/2006

Type or print name Elaine Linton  
For State Use Only

E-mail address: elaine.linton@apachecorp.com Telephone No. (918)491-5362

APPROVED BY: [Signature] TITLE PETROLEUM ENGINEER DATE APR 04 2006  
Conditions of Approval (if any):

# State of New Mexico

Energy, Minerals and Natural Resources Department

## DISTRICT I

1625 N. FRENCH DR., HOBBS, NM 88240

## DISTRICT II

1301 W. GRAND AVENUE, ARTESIA, NM 88210

## DISTRICT III

1000 Rio Brazos Rd., Aztec, NM 87410

## DISTRICT IV

1220 S. ST. FRANCIS DR., SANTA FE, NM 87505

## OIL CONSERVATION DIVISION

1220 SOUTH ST. FRANCIS DR.  
Santa Fe, New Mexico 87505

Form C-102

Revised JUNE 10, 2003

Submit to Appropriate District Office

State Lease - 4 Copies

Fee Lease - 3 Copies

## WELL LOCATION AND ACREAGE DEDICATION PLAT

☐ AMENDED REPORT

API Number 30-025-37463		Pool Code 06660	Pool Name Blinebry Oil & Gas (Oil)
Property Code 23112	Property Name SOUTHLAND ROYALTY A		Well Number 23
OGRID No. 00873	Operator Name APACHE CORPORATION		Elevation 3469'

### Surface Location

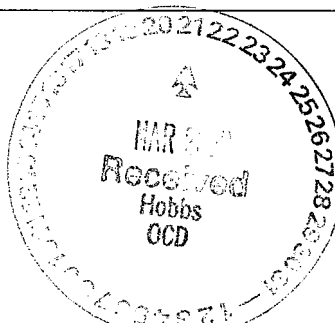
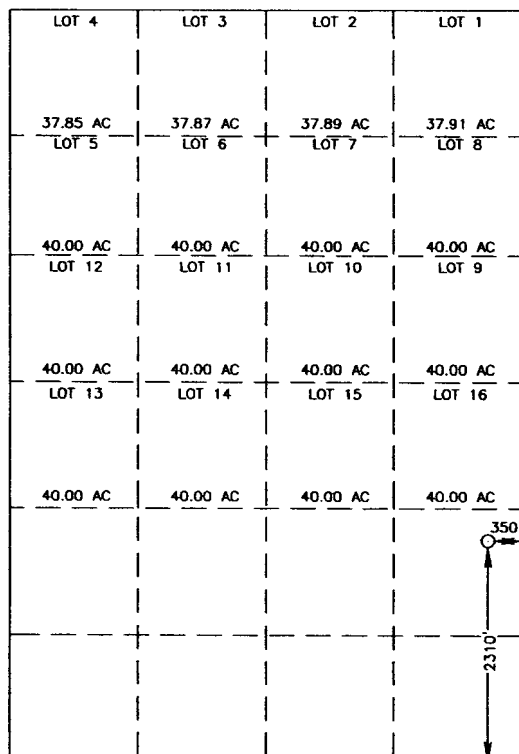
UL or lot No.	Section	Township	Range	Lot Idn	Feet from the	North/South line	Feet from the	East/West line	County
1	4	21-S	37-E		2310	SOUTH	350	EAST	LEA

### Bottom Hole Location If Different From Surface

UL or lot No.	Section	Township	Range	Lot Idn	Feet from the	North/South line	Feet from the	East/West line	County

Dedicated Acres	Joint or Infill	Consolidation Code	Order No.
40			

NO ALLOWABLE WILL BE ASSIGNED TO THIS COMPLETION UNTIL ALL INTERESTS HAVE BEEN CONSOLIDATED  
OR A NON-STANDARD UNIT HAS BEEN APPROVED BY THE DIVISION



GEODETIC COORDINATES  
NAD 27 NME

Y=550156.0 N  
X=861684.3 E

LAT.=32°30'24.87" N  
LONG.=103°09'36.45" W

### OPERATOR CERTIFICATION

I hereby certify that the information contained herein is true and complete to the best of my knowledge and belief.

*Elaine Linton*  
Elaine Linton  
Signature

Engineering Technician  
Printed Name

3/20/2006  
Title

Date

### SURVEYOR CERTIFICATION

I hereby certify that the well location shown on this plat was plotted from field notes of actual surveys made by me or under my supervision, and that the same is true and correct to the best of my belief.

JUNE 10, 2005

Date Surveyed JR

Signature & Seal of Professional Surveyor

*GARY EIDSON*  
GARY EIDSON  
05.11.0876

Certificate No. GARY EIDSON 12641

2000 0 2000 4000 Feet  
Scale: 1"=2000'

# State of New Mexico

Energy, Minerals and Natural Resources Department

## DISTRICT I

1625 N. FRENCH DR., HOBBS, NM 88240

## DISTRICT II

1301 W. GRAND AVENUE, ARTESIA, NM 88210

## DISTRICT III

1000 Rio Brazos Rd., Aztec, NM 87410

## DISTRICT IV

1220 S. ST. FRANCIS DR., SANTA FE, NM 87505

## OIL CONSERVATION DIVISION

1220 SOUTH ST. FRANCIS DR.  
Santa Fe, New Mexico 87505

Form C-102

Revised JUNE 10, 2003

Submit to Appropriate District Office

State Lease - 4 Copies

Fee Lease - 3 Copies

## WELL LOCATION AND ACREAGE DEDICATION PLAT

☐ AMENDED REPORT

API Number 30-025-37463		Pool Code 60240	Pool Name Tubb Oil & Gas (Oil)
Property Code 23112	Property Name SOUTHLAND ROYALTY A		Well Number 23
OGRID No. 00873	Operator Name APACHE CORPORATION		Elevation 3469'

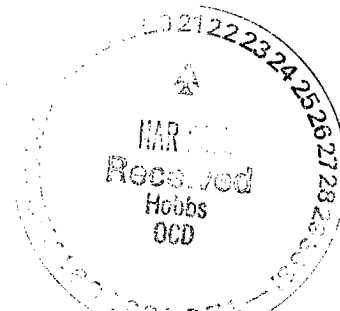
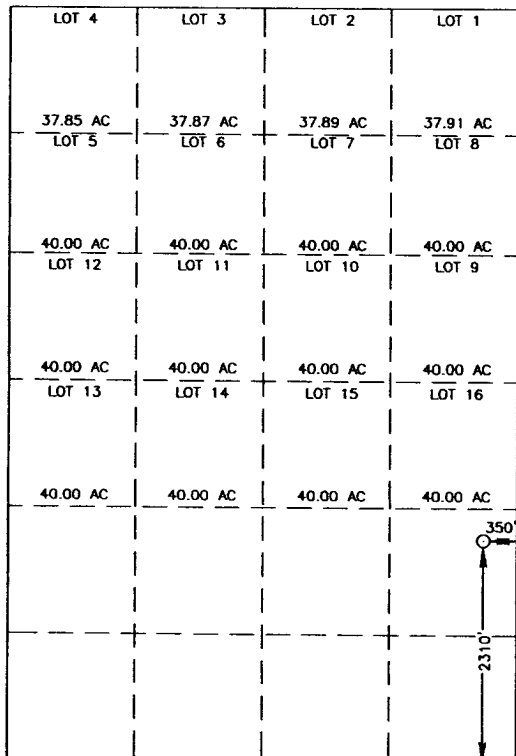
### Surface Location

UL or lot No.	Section	Township	Range	Lot Idn	Feet from the	North/South line	Feet from the	East/West line	County
1	4	21-S	37-E		2310	SOUTH	350	EAST	LEA

### Bottom Hole Location If Different From Surface

UL or lot No.	Section	Township	Range	Lot Idn	Feet from the	North/South line	Feet from the	East/West line	County
Dedicated Acres 40		Joint or Infill	Consolidation Code		Order No.				

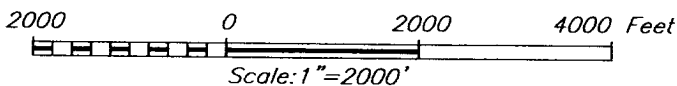
NO ALLOWABLE WILL BE ASSIGNED TO THIS COMPLETION UNTIL ALL INTERESTS HAVE BEEN CONSOLIDATED  
OR A NON-STANDARD UNIT HAS BEEN APPROVED BY THE DIVISION



GEODETIC COORDINATES  
NAD 27 NME

Y=550156.0 N  
X=861684.3 E

LAT.=32°30'24.87" N  
LONG.=103°09'36.45" W



### OPERATOR CERTIFICATION

I hereby certify the the information  
contained herein is true and complete to the  
best of my knowledge and belief.

*Elaine Linton*  
Signature

Elaine Linton  
Printed Name

Engineering Technician  
Title  
3/20/2004  
Date

### SURVEYOR CERTIFICATION

I hereby certify that the well location shown  
on this plat was plotted from field notes of  
actual surveys made by me or under my  
supervision, and that the same is true and  
correct to the best of my belief.

JUNE 10, 2005

Date Surveyed  
Signature & Seal of  
Professional Surveyor

GARY EIDSON  
NEW MEXICO  
REGISTERED PROFESSIONAL SURVEYOR  
05.11.0876  
Certificate No. 12641

## DISTRICT I

1625 N. FRENCH DR., HOBBES, NM 88240

## DISTRICT II

1301 W. GRAND AVENUE, ARTESIA, NM 88210

## DISTRICT III

1000 Rio Brazos Rd., Aztec, NM 87410

## DISTRICT IV

1220 S. ST. FRANCIS DR., SANTA FE, NM 87505

## State of New Mexico

Energy, Minerals and Natural Resources Department

## OIL CONSERVATION DIVISION

1220 SOUTH ST. FRANCIS DR.  
Santa Fe, New Mexico 87505

Form C-102

Revised JUNE 10, 2003

Submit to Appropriate District Office

State Lease - 4 Copies

Fee Lease - 3 Copies

## WELL LOCATION AND ACREAGE DEDICATION PLAT

☐ AMENDED REPORT

API Number 30-025-37463	Pool Code 19190	Pool Name Drinkard
Property Code 23112	Property Name SOUTHLAND ROYALTY A	Well Number 23
OGRID No. 00873	Operator Name APACHE CORPORATION	Elevation 3469'

## Surface Location

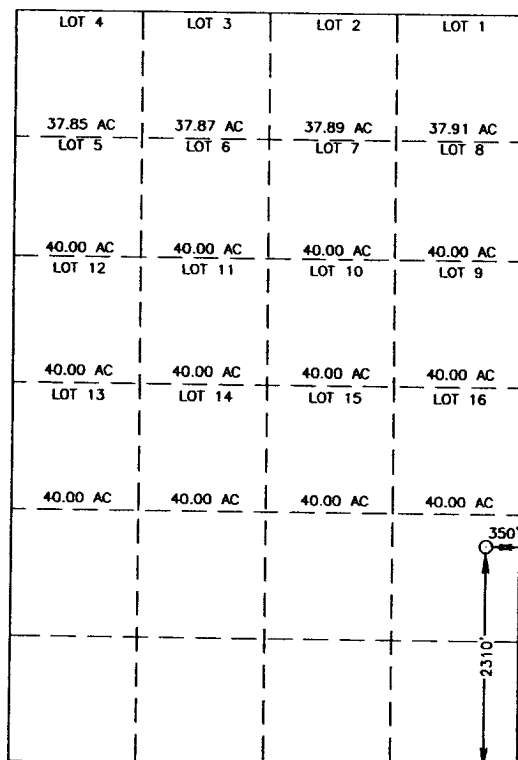
UL or lot No.	Section	Township	Range	Lot Idn	Feet from the	North/South line	Feet from the	East/West line	County
1	4	21-S	37-E		2310	SOUTH	350	EAST	LEA

## Bottom Hole Location If Different From Surface

UL or lot No.	Section	Township	Range	Lot Idn	Feet from the	North/South line	Feet from the	East/West line	County

Dedicated Acres	Joint or Infill	Consolidation Code	Order No.
40			

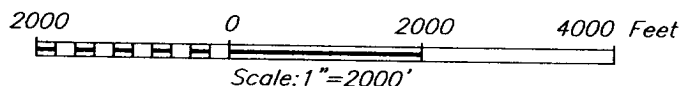
NO ALLOWABLE WILL BE ASSIGNED TO THIS COMPLETION UNTIL ALL INTERESTS HAVE BEEN CONSOLIDATED  
OR A NON-STANDARD UNIT HAS BEEN APPROVED BY THE DIVISION



GEODETIC COORDINATES  
NAD 27 NME

Y=550156.0 N  
X=861684.3 E

LAT.=32°30'24.87" N  
LONG.=103°09'36.45" W



## OPERATOR CERTIFICATION

I hereby certify the the information  
contained herein is true and complete to the  
best of my knowledge and belief.

*Elaine Linton*  
Signature

Elaine Linton  
Printed Name

Engineering Technician  
Title

3/20/2006  
Date

## SURVEYOR CERTIFICATION

I hereby certify that the well location shown  
on this plat was plotted from field notes of  
actual surveys made by me or under my  
supervision, and that the same is true and  
correct to the best of my belief.

JUNE 10, 2005

Date Surveyed JR  
Signature & Seal of  
Professional Surveyor

GARY EIDSON  
NEW MEXICO  
REGISTERED PROFESSIONAL SURVEYOR  
05.11.0876  
Certificate No. GARY EIDSON 12641