

District I
1625 N. French Dr. Hobbs, NM 88240
Phone: (505) 393-6161 Fax: (505) 393-0720
District II
311 S. First St. Artesia, NM 88210
Phone: (505) 718-1283 Fax: (505) 718-0720
District III
1000 Rio Brazos Road Aztec, NM 87410
Phone: (505) 334-6178 Fax: (505) 334-6170
District IV
1220 S. St. Francis Dr. Santa Fe, NM 87505
Phone: (505) 476-3160 Fax: (505) 476-7462

State of New Mexico
Energy, Minerals & Natural Resources Department
OIL CONSERVATION DIVISION
1220 South St. Francis Dr.
Santa Fe, NM 87505

Form C-102
Revised August 1, 2011
Submit one copy to appropriate
District Office

☐ AMENDED REPORT

WELL LOCATION AND ACREAGE DEDICATION PLAT

¹ API Number 30-025-43388		² Pool Code 5150		³ Pool Name Bell Lake; Bone Spring North	
⁴ Property Code 313567		⁵ Property Name STARCASTER 18 FEDERAL Com			⁶ Well Number 1H
⁷ OGRID No. 260297		⁸ Operator Name BTA OIL PRODUCERS, LLC			⁹ Elevation 3507.3

¹⁰ Surface Location

UL or lot no.	Section	Township	Range	Lot Idn	Feet from the	North/South line	Feet from the	East/West line	County
C	18	23 S	34 E		330	NORTH	1340	WEST	LEA

¹¹ Bottom Hole Location If Different From Surface

UL or lot no.	Section	Township	Range	Lot Idn	Feet from the	North/South line	Feet from the	East/West line	County
4	18	23 S	34 E		330	SOUTH	660	WEST	LEA

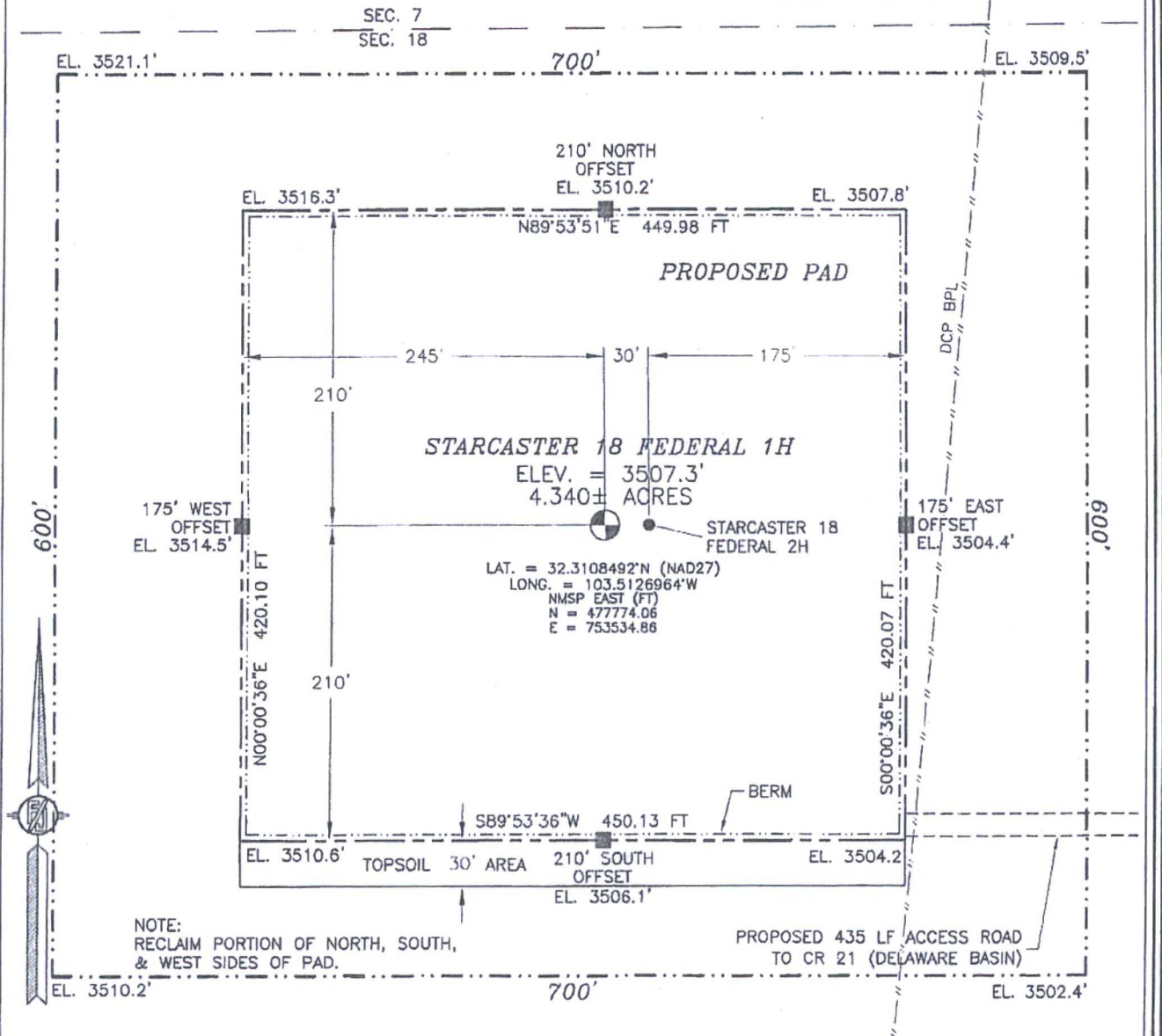
¹² Dedicated Acres 150.96	¹³ Joint or Infill	¹⁴ Consolidation Code	¹⁵ Order No.
---	-------------------------------	----------------------------------	-------------------------

No allowable will be assigned to this completion until all interests have been consolidated or a non-standard unit has been approved by the division.

<p>N69°33'21"E 2552.06 FT</p> <p>N89°34'54"E 2649.38 FT</p> <p>1340'</p> <p>NW CORNER SEC. 18 LAT. = 32.3117555°N LONG. = 103.5170326°W</p> <p>NMSP EAST (FT) N = 478093.56 E = 752192.65</p> <p>W/4 CORNER SEC. 18 LAT. = 32.3045005°N LONG. = 103.5170345°W</p> <p>NMSP EAST (FT) N = 475454.24 E = 752212.16</p> <p>BOTTOM OF HOLE LAT. = 32.2981563°N LONG. = 103.5148991°W</p> <p>NMSP EAST (FT) N = 473151.32 E = 752889.57</p> <p>SW CORNER SEC. 18 LAT. = 32.2972507°N LONG. = 103.5170345°W</p> <p>NMSP EAST (FT) N = 472816.85 E = 752232.22</p> <p>589°36'17"W 2606.08 FT</p>		<p>NE CORNER SEC. 18 LAT. = 32.3117531°N LONG. = 103.5002007°W</p> <p>NMSP EAST (FT) N = 478132.67 E = 757392.96</p> <p>E/4 CORNER SEC. 18 LAT. = 32.3044916°N LONG. = 103.5001874°W</p> <p>NMSP EAST (FT) N = 475491.04 E = 757417.59</p> <p>SE CORNER SEC. 18 LAT. = 32.2972394°N LONG. = 103.5001706°W</p> <p>NMSP EAST (FT) N = 472852.81 E = 757443.28</p> <p>589°36'17"W 2606.08 FT</p>		<p>¹⁶ OPERATOR CERTIFICATION</p> <p>I hereby certify that the information contained herein is true and complete to the best of my knowledge and belief, and that this organization either owns a working interest or undivided mineral interest in the land including the proposed bottom hole location or has a right to drill this well at this location pursuant to a contract with an owner of such a mineral or working interest, or to a voluntary pooling agreement or a compulsory pooling order heretofore entered by the Division.</p> <p><i>Pam Inskeep</i> 1/04/2017 Signature Date</p> <p>Pam Inskeep, Regulatory Administrator Printed Name</p> <p>pinskeep@btaoil.com E-mail Address</p> <p>¹⁷ SURVEYOR CERTIFICATION</p> <p>I hereby certify that the well location shown on this plat was plotted from field notes of actual surveys made by me or under my supervision, and that the same is true and correct to the best of my belief.</p> <p>JANUARY 3, 2017 Date of Survey</p> <p><i>Frank J. Ramirez</i> Signature and Seal of Professional Surveyor</p> <p>License Number: 11100014 JARAMILLO, FRANK J. 11/12/97 Survey No. 2441B</p>
--	--	---	--	--

SECTION 18, TOWNSHIP 23 SOUTH, RANGE 34 EAST, N.M.P.M.
LEA COUNTY, STATE OF NEW MEXICO
SITE MAP

NOTE: LATITUDE AND LONGITUDE COORDINATES ARE SHOWN USING THE NORTH AMERICAN DATUM OF 1927 (NAD27). LISTED NEW MEXICO STATE PLANE EAST COORDINATES ARE GRID (NAD27). BASIS OF BEARING AND DISTANCES USED ARE NEW MEXICO STATE PLANE EAST COORDINATES (NAD 83) MODIFIED TO THE SURFACE.



010 50 100 200

SCALE 1" = 100'

DIRECTIONS TO LOCATION

FROM THE INTERSECTION OF CR 21 (DELAWARE BASIN) AND CR 21-B (SHELL) GO NORTH ON CR 21 FOR APPROX. 4.0 MILES. TURN LEFT GO 435' TO THE SOUTHEAST PAD CORNER FOR THIS LOCATION.

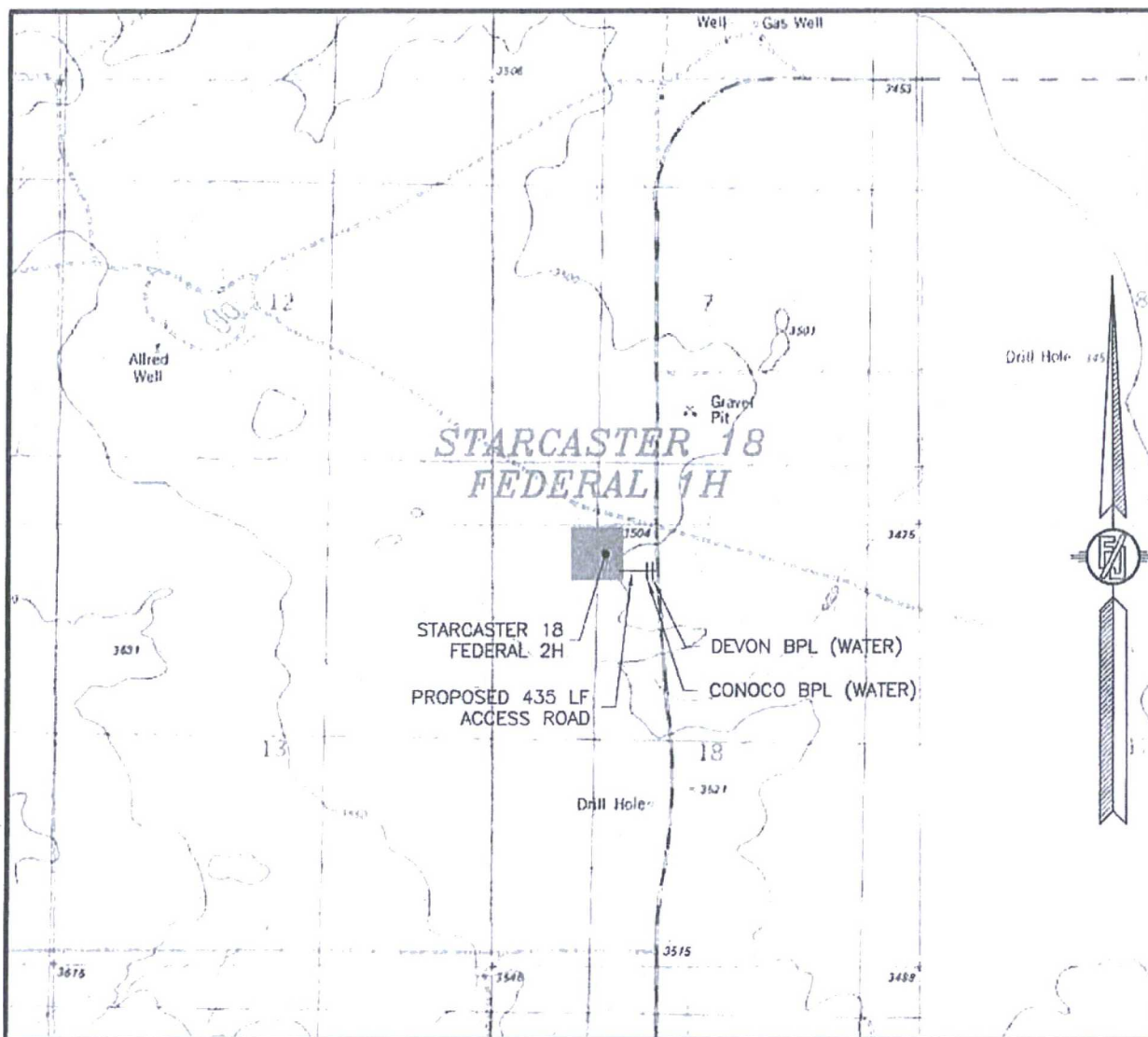
BTA OIL PRODUCERS, LLC
STARCASTER 18 FEDERAL 1H
LOCATED 330 FT. FROM THE NORTH LINE
AND 1340 FT. FROM THE WEST LINE OF
SECTION 18, TOWNSHIP 23 SOUTH,
RANGE 34 EAST, N.M.P.M.
LEA COUNTY, STATE OF NEW MEXICO

JANUARY 3, 2017

SURVEY NO. 2441B

MADRON SURVEYING, INC. 301 SOUTH CANAL (575) 234-3341 CARLSBAD, NEW MEXICO

SECTION 18, TOWNSHIP 23 SOUTH, RANGE 34 EAST, N.M.P.M.
LEA COUNTY, STATE OF NEW MEXICO
LOCATION VERIFICATION MAP



USGS QUAD MAP:
TIP TOP WELLS

NOT TO SCALE

BTA OIL PRODUCERS, LLC
STARCASTER 18 FEDERAL 1H
LOCATED 330 FT. FROM THE NORTH LINE
AND 1340 FT. FROM THE WEST LINE OF
SECTION 18, TOWNSHIP 23 SOUTH,
RANGE 34 EAST, N.M.P.M.
LEA COUNTY, STATE OF NEW MEXICO

JANUARY 3, 2017

MADRON SURVEYING, INC. 301 SOUTH CANAL (575) 234-3341 CARLSBAD, NEW MEXICO SURVEY NO. 2441B

SECTION 18, TOWNSHIP 23 SOUTH, RANGE 34 EAST, N.M.P.M.
LEA COUNTY, STATE OF NEW MEXICO
VICINITY MAP



DISTANCES IN MILES

NOT TO SCALE

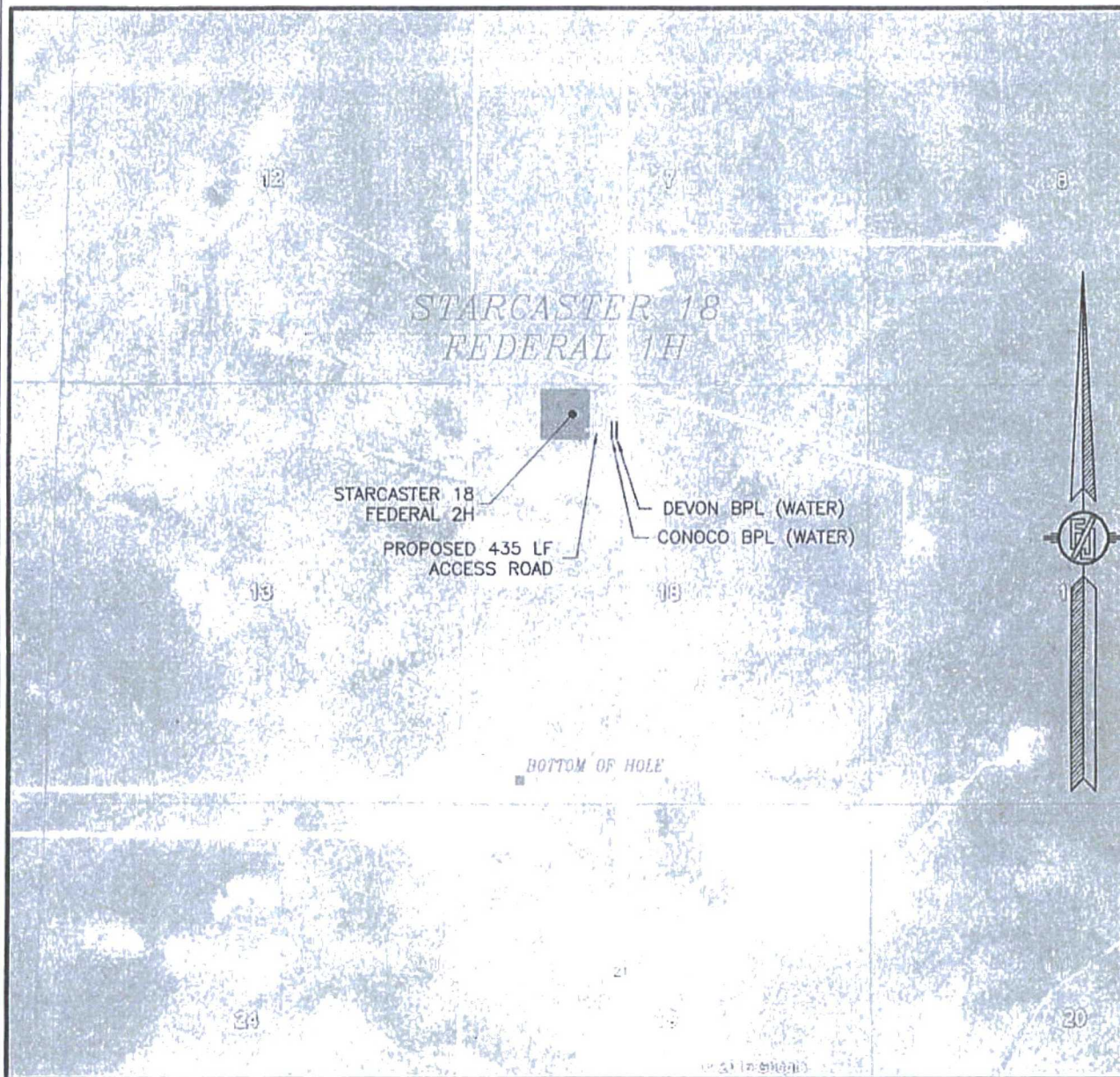
DIRECTIONS TO LOCATION
FROM THE INTERSECTION OF CR 21 (DELAWARE BASIN) AND CR 21-B (SHELL) GO NORTH ON CR 21 FOR APPROX. 4.0 MILES. TURN LEFT GO 435' TO THE SOUTHEAST PAD CORNER FOR THIS LOCATION.

BTA OIL PRODUCERS, LLC
STARCASTER 18 FEDERAL 1H
LOCATED 330 FT. FROM THE NORTH LINE
AND 1340 FT. FROM THE WEST LINE OF
SECTION 18, TOWNSHIP 23 SOUTH,
RANGE 34 EAST, N.M.P.M.
LEA COUNTY, STATE OF NEW MEXICO

JANUARY 3, 2017

MADRON SURVEYING, INC. 301 SOUTH CANAL (575) 234-3341 SURVEY NO. 2441B CARLSBAD, NEW MEXICO

SECTION 18, TOWNSHIP 23 SOUTH, RANGE 34 EAST, N.M.P.M.
LEA COUNTY, STATE OF NEW MEXICO
AERIAL PHOTO



NOT TO SCALE
AERIAL PHOTO:
GOOGLE EARTH
FEBRUARY 2014

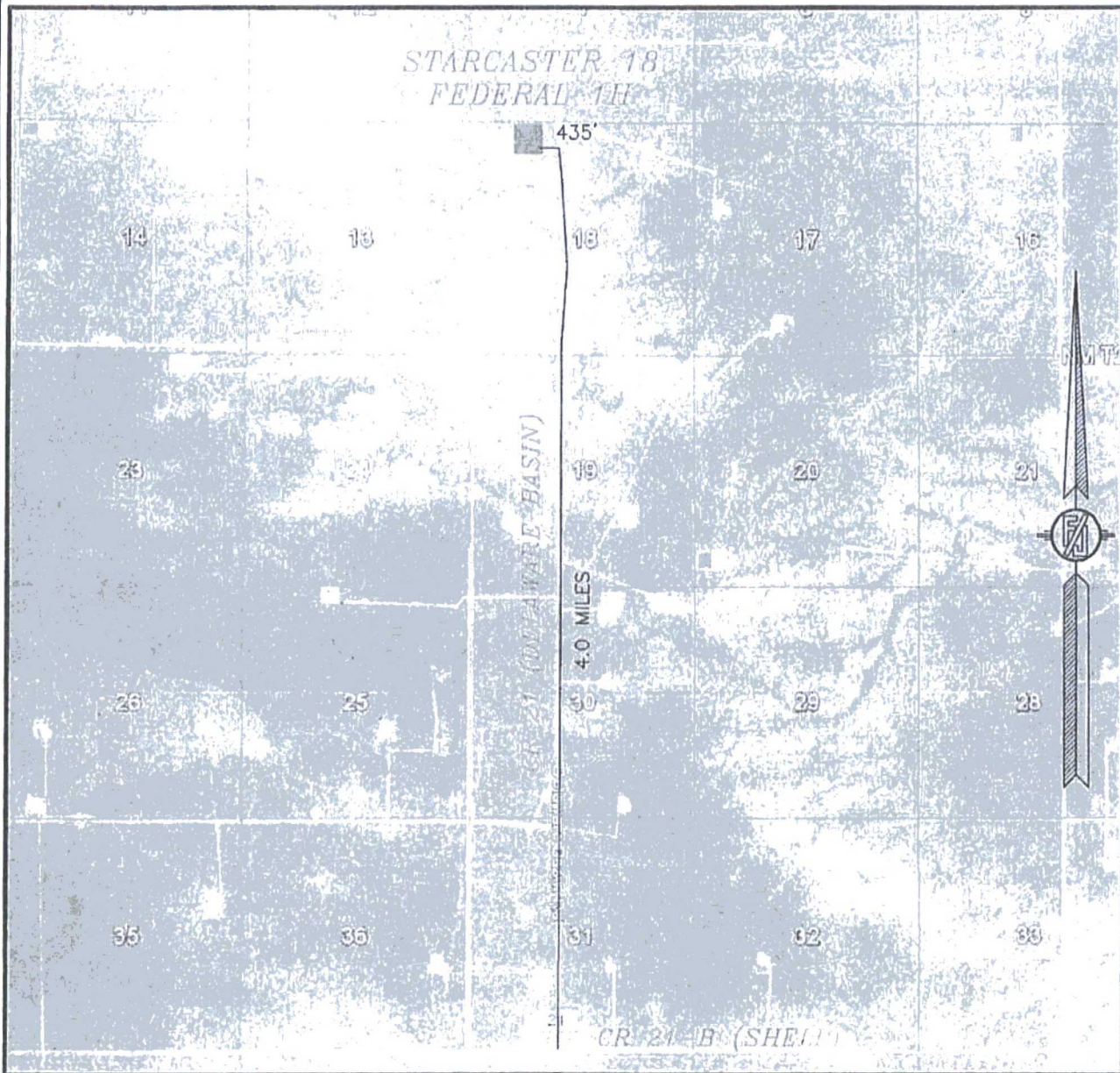
BTA OIL PRODUCERS, LLC
STARCASTER 18 FEDERAL 1H
LOCATED 330 FT. FROM THE NORTH LINE
AND 1340 FT. FROM THE WEST LINE OF
SECTION 18, TOWNSHIP 23 SOUTH,
RANGE 34 EAST, N.M.P.M.
LEA COUNTY, STATE OF NEW MEXICO

JANUARY 3, 2017

SURVEY NO. 2441B

MADRON SURVEYING, INC. 301 SOUTH CANAL CARLSBAD, NEW MEXICO
(575) 734-3341

SECTION 18, TOWNSHIP 23 SOUTH, RANGE 34 EAST, N.M.P.M.
LEA COUNTY, STATE OF NEW MEXICO
ACCESS AERIAL ROUTE MAP



NOT TO SCALE
AERIAL PHOTO:
GOOGLE EARTH
FEBRUARY 2014

BTA OIL PRODUCERS, LLC
STARCASTER 18 FEDERAL 1H
LOCATED 330 FT. FROM THE NORTH LINE
AND 1340 FT. FROM THE WEST LINE OF
SECTION 18, TOWNSHIP 23 SOUTH,
RANGE 34 EAST, N.M.P.M.
LEA COUNTY, STATE OF NEW MEXICO

JANUARY 3, 2017

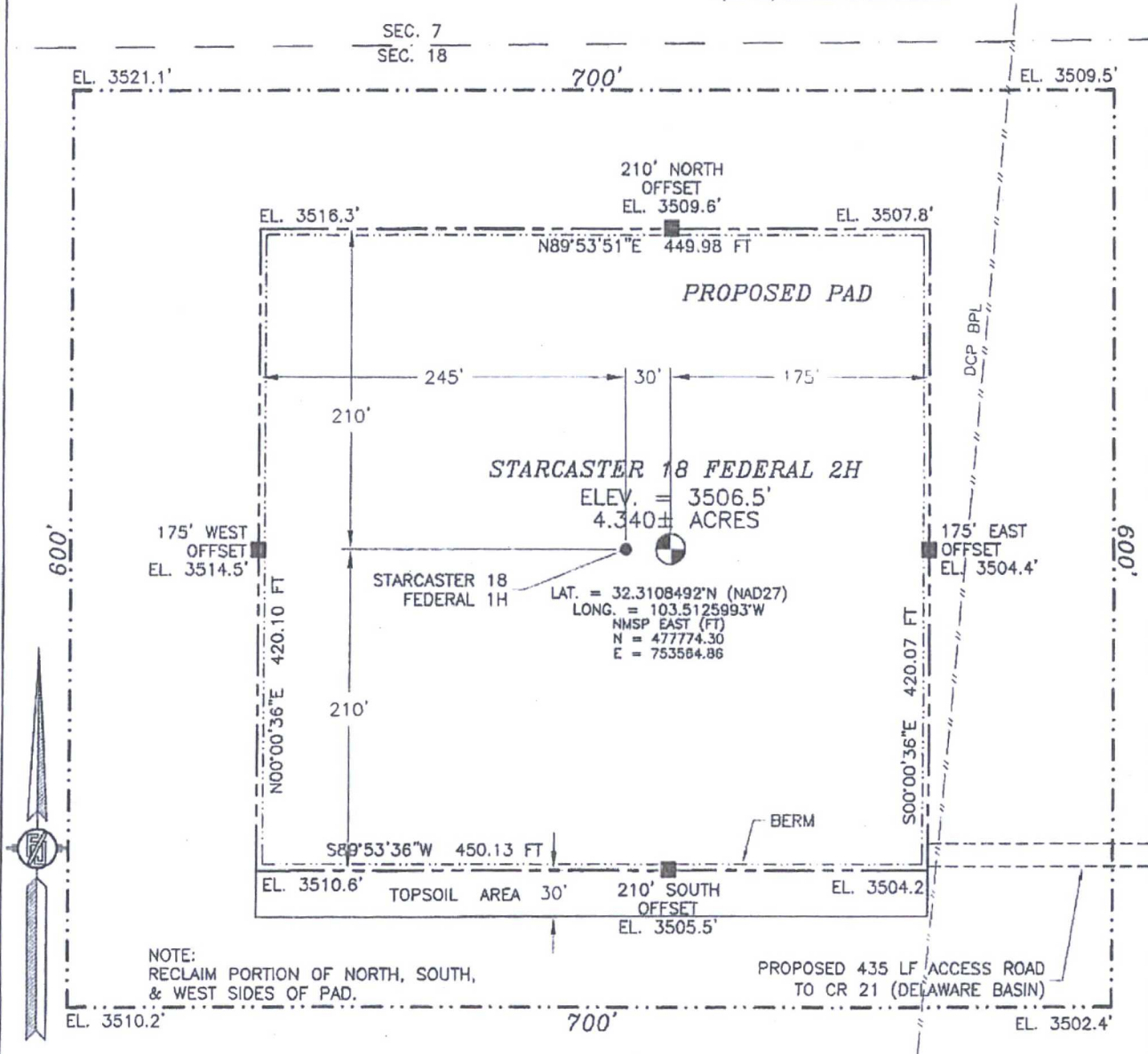
SURVEY NO. 2441B

MADRON SURVEYING, INC. 301 SOUTH CANAL (575) 234-3341 CARLSBAD, NEW MEXICO

SECTION 18, TOWNSHIP 23 SOUTH, RANGE 34 EAST, N.M.P.M.
LEA COUNTY, STATE OF NEW MEXICO

SITE MAP

NOTE: LATITUDE AND LONGITUDE COORDINATES ARE SHOWN USING THE NORTH AMERICAN DATUM OF 1927 (NAD27), LISTED NEW MEXICO STATE PLANE EAST COORDINATES ARE GRID (NAD27). BASIS OF BEARING AND DISTANCES USED ARE NEW MEXICO STATE PLANE EAST COORDINATES (NAD 83) MODIFIED TO THE SURFACE.



NOTE:
RECLAIM PORTION OF NORTH, SOUTH,
& WEST SIDES OF PAD.

010 50 100 200

SCALE 1" = 100'

DIRECTIONS TO LOCATION

FROM THE INTERSECTION OF CR 21 (DELAWARE BASIN) AND CR 21-B (SHELL) GO NORTH ON CR 21 FOR APPROX. 4.0 MILES. TURN LEFT GO 435' TO THE SOUTHEAST PAD CORNER FOR THIS LOCATION.

BTA OIL PRODUCERS, LLC
STARCASTER 18 FEDERAL 2H
LOCATED 330 FT. FROM THE NORTH LINE
AND 1370 FT. FROM THE WEST LINE OF
SECTION 18, TOWNSHIP 23 SOUTH,
RANGE 34 EAST, N.M.P.M.
LEA COUNTY, STATE OF NEW MEXICO

JANUARY 3, 2017

SURVEY NO. 2442B

MADRON SURVEYING, INC. 301 SOUTH CANAL (575) 234-3341 CARLSBAD, NEW MEXICO